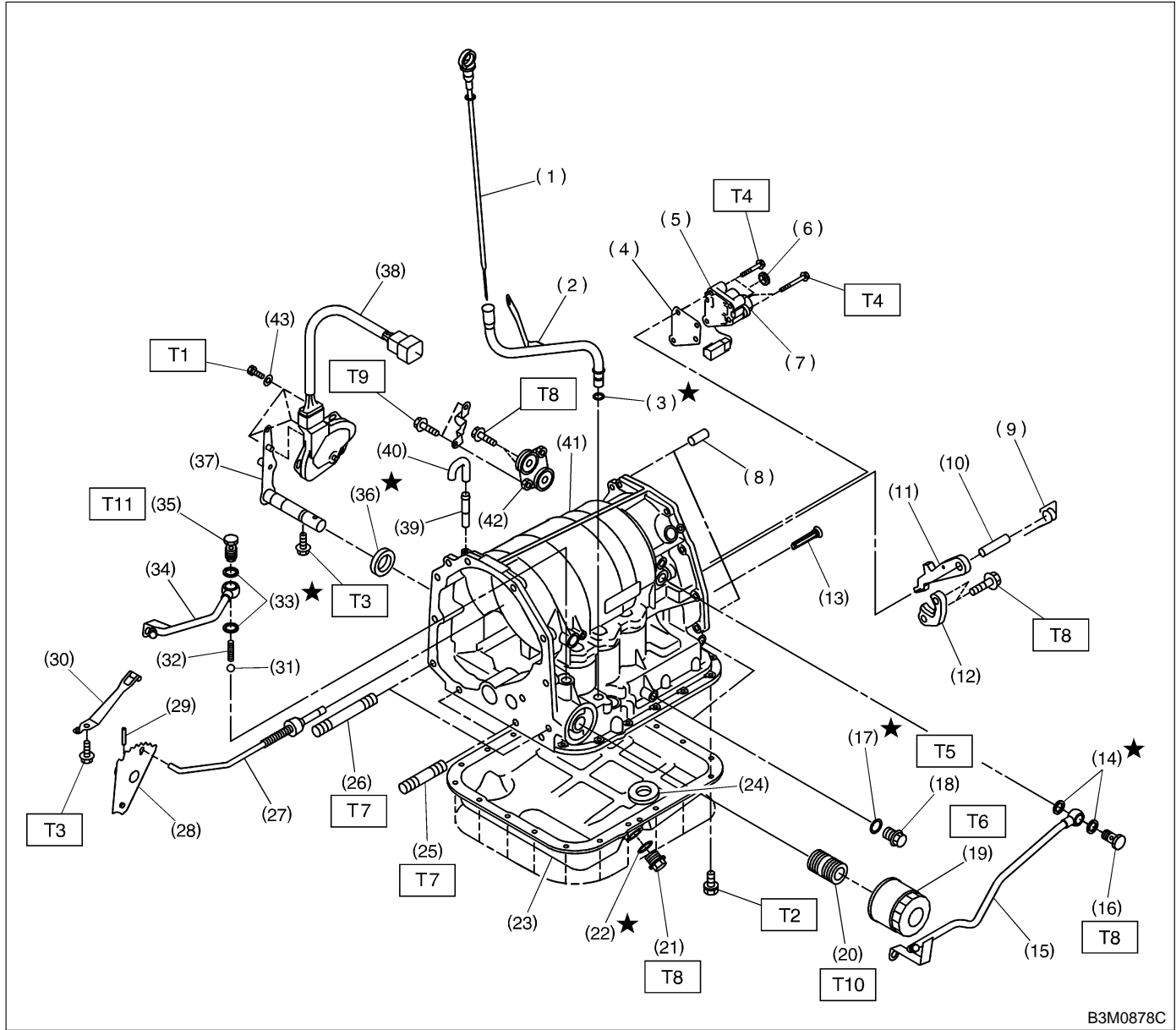


3. Transmission Case and Control Device



- | | |
|----------------------------|----------------------------|
| (1) Oil level gauge | (20) Oil filter stud bolt |
| (2) Oil charger pipe | (21) Drain plug |
| (3) O-ring | (22) Gasket |
| (4) Transfer valve plate | (23) Oil pan |
| (5) Transfer valve ASSY | (24) Magnet |
| (6) Transfer clutch seal | (25) Stud bolt (Short) |
| (7) Transfer duty solenoid | (26) Stud bolt (Long) |
| (8) Straight pin | (27) Parking rod |
| (9) Return spring | (28) Manual plate |
| (10) Shaft | (29) Spring pin |
| (11) Parking pawl | (30) Detention spring |
| (12) Parking support | (31) Ball |
| (13) Inlet filter | (32) Spring |
| (14) Gasket | (33) Gasket |
| (15) Inlet pipe | (34) Outlet pipe |
| (16) Union screw | (35) Union screw |
| (17) O-ring | (36) Oil seal |
| (18) Test plug | (37) Select lever |
| (19) Oil filter | (38) Inhibitor switch ASSY |

- (39) Nipple
- (40) Air breather hose
- (41) Transmission case
- (42) Plate ASSY
- (43) Washer

Tightening torque: N-m (kg-m, ft-lb)

T1: 3.4±0.5 (0.35±0.05, 2.5±0.4)

T2: 4.9±0.5 (0.50±0.05, 3.6±0.4)

T3: 6±1 (0.6±0.1, 4.3±0.7)

T4: 8±1 (0.8±0.1, 5.8±0.7)

T5: 13±1 (1.3±0.1, 9.4±0.7)

T6: 13.7±2.0 (1.4±0.2, 10.1±1.4)

T7: 18±3 (1.8±0.3, 13.0±2.2)

T8: 25±2 (2.5±0.2, 18.1±1.4)

T9: 33±10 (3.3±1.0, 24±7)

T10: 24.5±2.9 (2.5±0.3, 18.1±2.2)

T11: 44±4 (4.5±0.4, 32.5±2.9)