

**BODY SECTION**

This service manual has been prepared to provide SUBARU service personnel with the necessary information and data for the correct maintenance and repair of SUBARU vehicles.

This manual includes the procedures for maintenance, disassembling, reassembling, inspection and adjustment of components and diagnostics for guidance of experienced mechanics.

Please peruse and utilize this manual fully to ensure complete repair work for satisfying our customers by keeping their vehicle in optimum condition. When replacement of parts during repair work is needed, be sure to use SUBARU genuine parts.

All information, illustration and specifications contained in this manual are based on the latest product information available at the time of publication approval.

FUJI HEAVY INDUSTRIES LTD.

**HVAC SYSTEM  
(HEATER, VENTILATOR AND A/C) AC**

**AIRBAG SYSTEM AB**

**SEAT BELT SYSTEM SB**

**LIGHTING SYSTEM LI**

**WIPER AND WASHER SYSTEMS WW**

**ENTERTAINMENT ET**

**COMMUNICATION SYSTEM COM**

**GLASS/WINDOWS/MIRRORS GW**

**BODY STRUCTURE BS**

**INSTRUMENTATION/DRIVER INFO IDI**

**SEATS SE**

**SECURITY AND LOCKS SL**

**SUNROOF/T-TOP/CONVERTIBLE TOP  
(SUNROOF) SR**

**EXTERIOR/INTERIOR TRIM EI**

**EXTERIOR BODY PANELS EB**

**CRUISE CONTROL SYSTEM CC**

# COMMUNICATION SYSTEM

# COM



	<b>Page</b>
1. General Description.....	2
2. Horn System.....	3
3. Horn.....	5
4. Horn Switch.....	6



# GENERAL DESCRIPTION

Communication System

---

## 1. General Description S904001

### A: PREPARATION TOOL S904001A17

#### 1. GENERAL TOOLS S904001A1701

TOOL NAME	REMARKS
Circuit Tester	Used for measuring resistance and voltage.

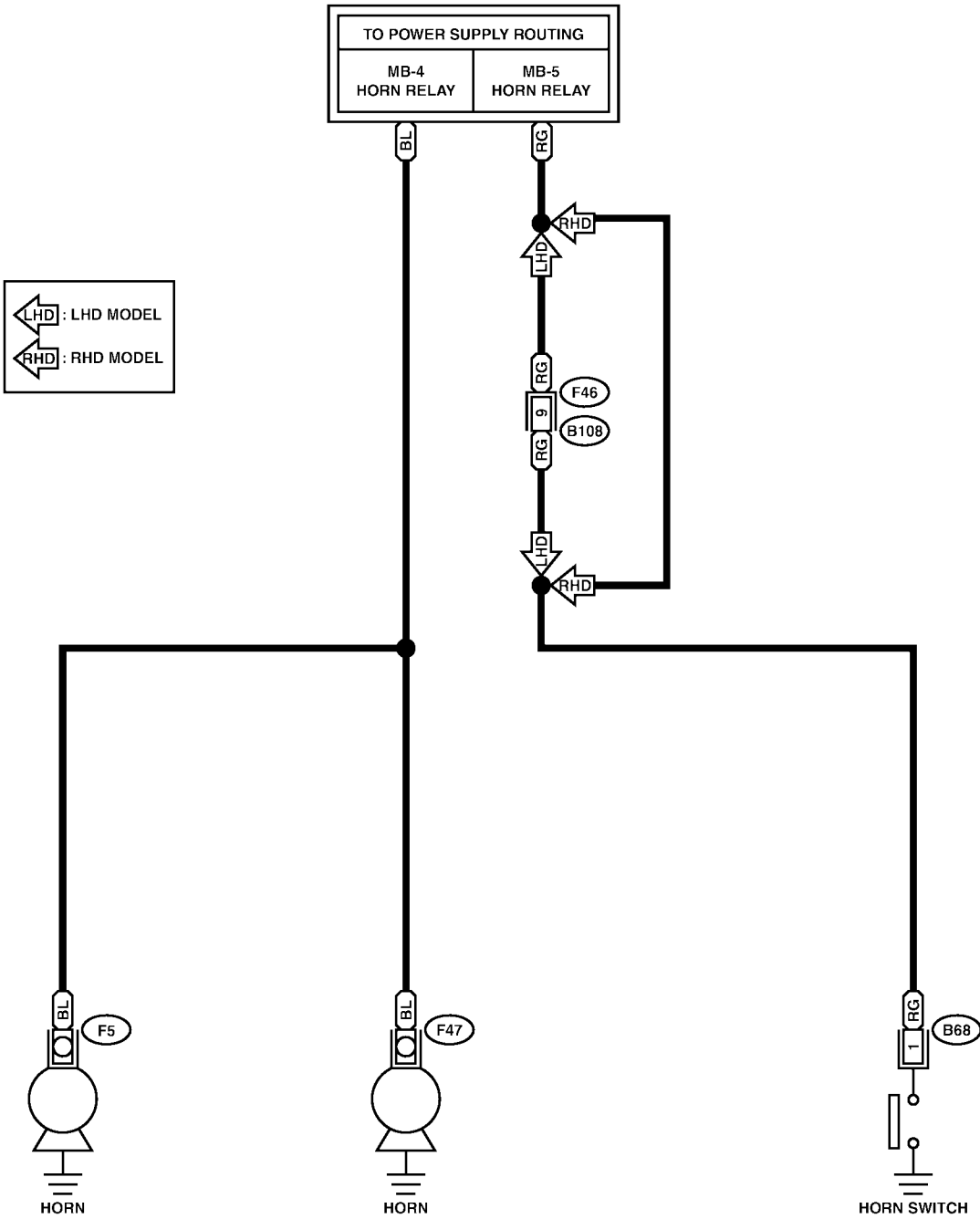
## 2. Horn System S904436

### A: SCHEMATIC S904436A21

#### 1. HORN S904436A2101

**HORN-01**

**HORN-01**



(B68) (BLACK)

(B108)

1	2
3	4

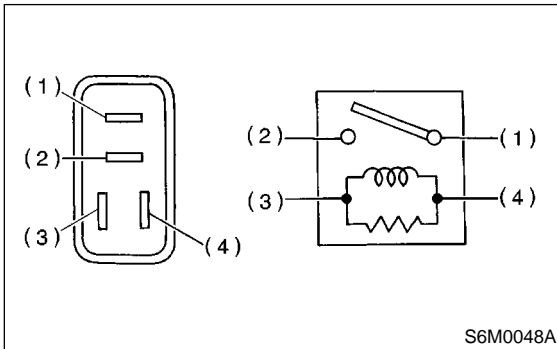
1	2	3	4	5	6	7	8	9
10	11	12	13	14	15	16	17	18
19	20							

## B: INSPECTION S904436A10

### 1. HORN RELAY S904436A1001

Check continuity between terminals (indicated in table below) when terminal No. 4 is connected to battery and terminal No. 3 is grounded.

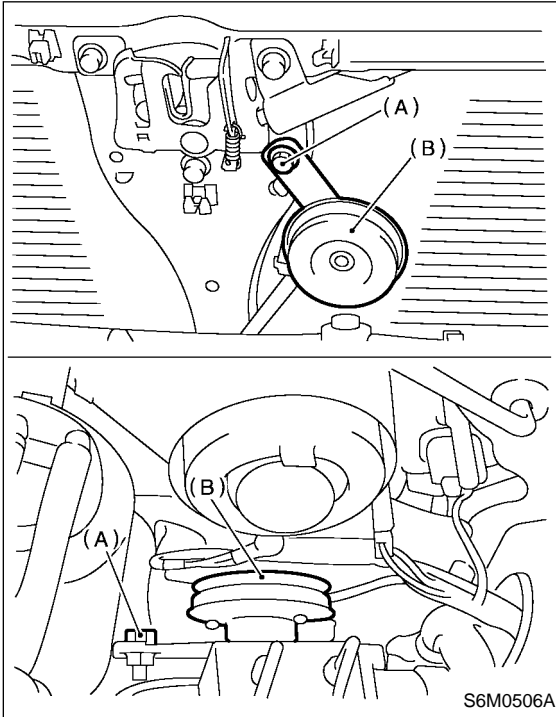
When current flows.	Between terminals No. 1 and No. 2	Continuity exists.
When current does not flow.	Between terminals No. 1 and No. 2	Continuity does not exist.
	Between terminals No. 3 and No. 4	Continuity exists.



### 3. Horn S904437

#### A: REMOVAL S904437A18

- 1) Remove horn bracket mounting bolt (A).
- 2) Disconnect harness connector and remove horn assembly (B).

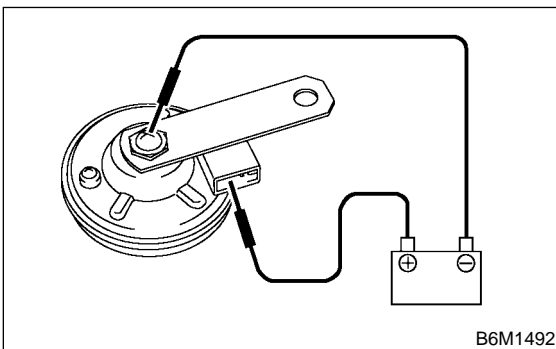


#### B: INSTALLATION S904437A11

Install in the reverse order of removal.

#### C: INSPECTION S904437A10

With 12 V direct current supply between horn terminal and case ground, check that the horn sounds properly.



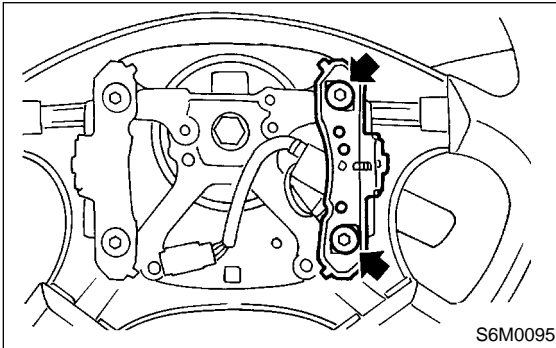
## 4. Horn Switch S904434

### A: REMOVAL S904434A18

**WARNING:**

Before servicing, be sure to read the notes in the AB section for proper handling of the driver airbag module. <Ref. to AB-3 CAUTION, General Description.>

- 1) Remove the driver's airbag module. <Ref. to AB-12 Driver's Airbag Module.>
- 2) Remove horn switch from steering wheel as shown.

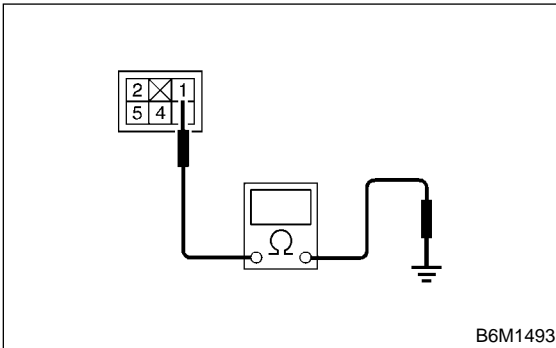


### B: INSTALLATION S904434A11

Install in the reverse order of removal.

### C: INSPECTION S904434A10

Check continuity between terminals.



Switch position	Tester connection	Specified condition
When horn switch is pushed.	1—Body ground	Continuity
When horn switch is not pushed.		No continuity