

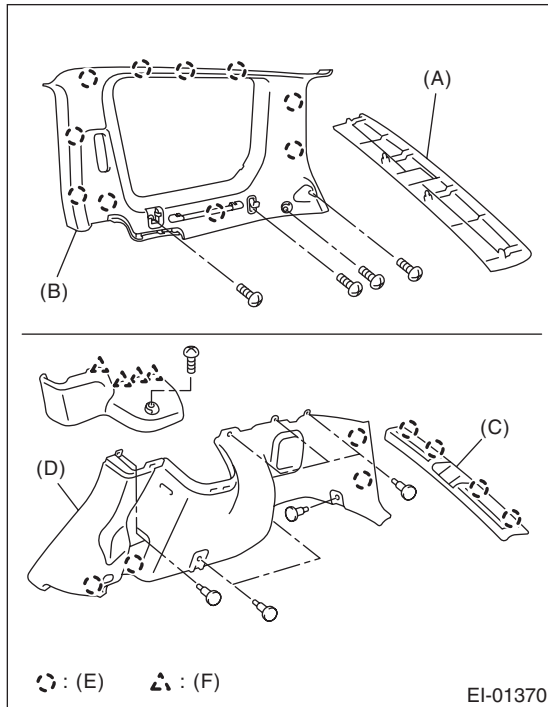
Rear Quarter Trim

EXTERIOR/INTERIOR TRIM

19.Rear Quarter Trim

A: REMOVAL

- 1) Remove the rear seat. <Ref. to SE-17, REMOVAL, Rear Seat.>
- 2) Remove the side sill rear cover.
- 3) Remove the rear rail trim (A).
- 4) Loosen the screws to remove the strut cap.
- 5) Remove the rear seat belt shoulder anchor.
- 6) Loosen the screws and clips to remove the rear quarter upper trim (B).
- 7) Remove the rear skirt trim (C).
- 8) Loosen the screws and clips to remove the rear quarter lower trim (D).



B: INSTALLATION

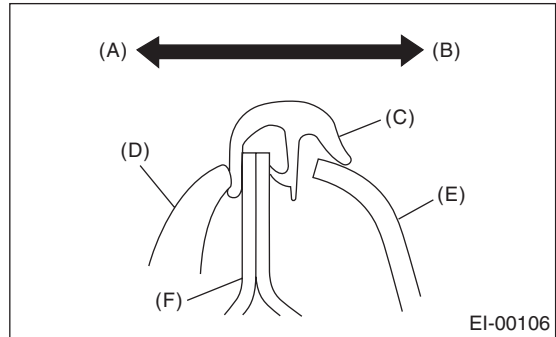
Install in the reverse order of removal.

CAUTION:

Be sure to securely hook claws of inner trim panel to body flange.

NOTE:

When installing the rear quarter upper trim, be sure to set the rear molding as shown in the figure.



- (A) Outside
- (B) Inside
- (C) Molding
- (D) Weather strip
- (E) Trim
- (F) Body