

IDENTIFICATION

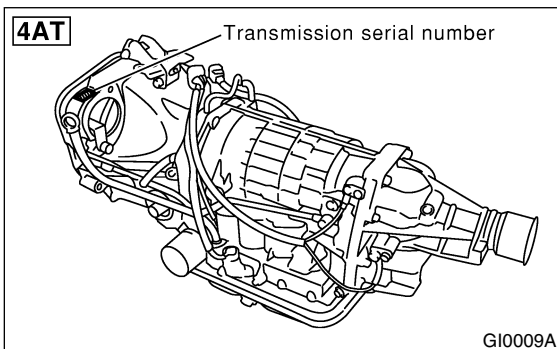
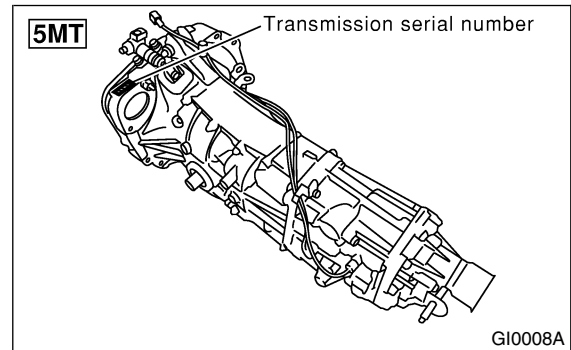
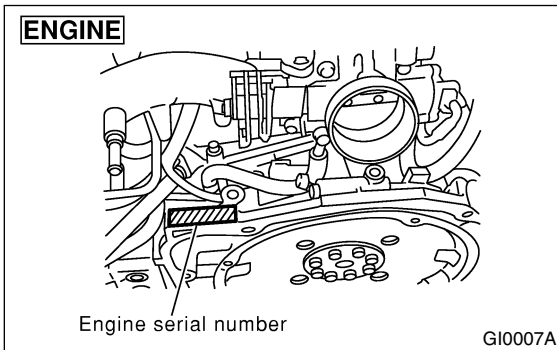
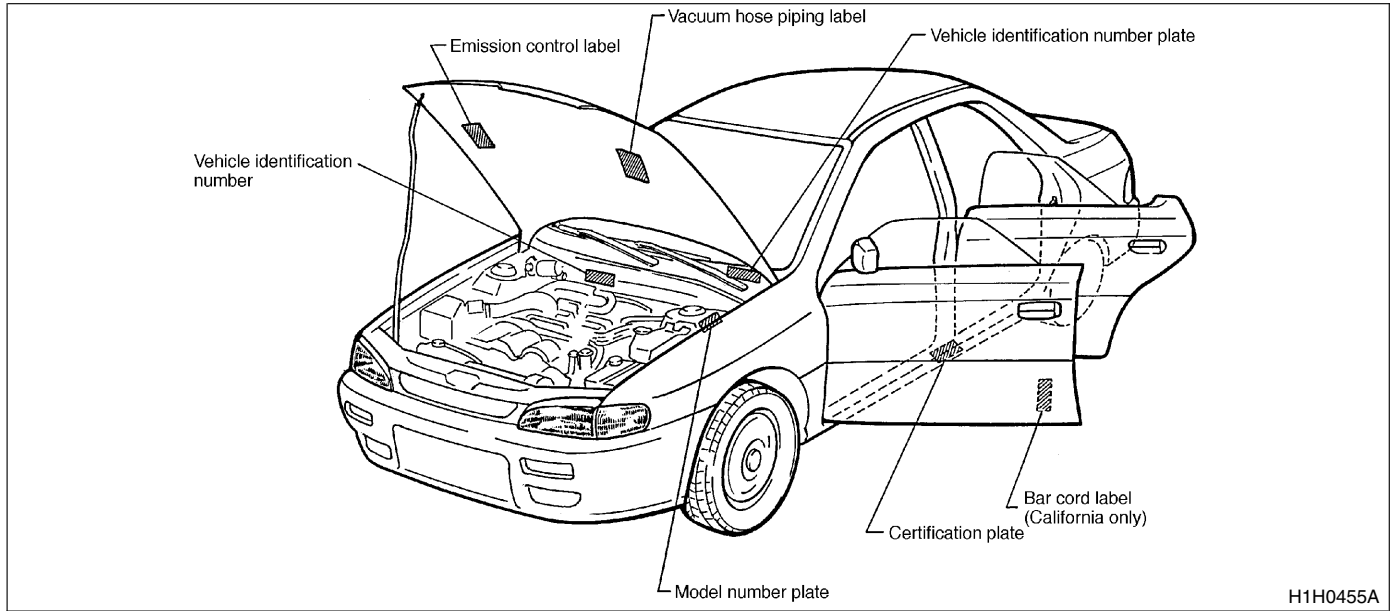
Identification

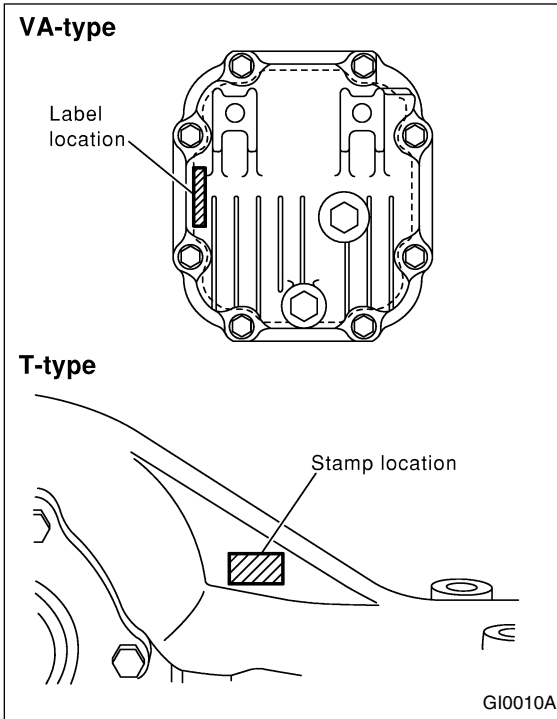
1. Identification SA06679

A: IDENTIFICATION SA06679F70

1. IDENTIFICATION NUMBER AND LABEL LOCATIONS SA06679F7001

The VIN (Vehicle Identification Numbers) is used to classify the vehicle.
Positioning of the plate label for identification





Model number plate

FUJI HEAVY INDUSTRIES LTD.

型 式

車台番号 **JF1BD4LG9RG002001**

VIN

アプライトモデル **BD4AL3G** オプションコード **E0**
 applied model option code

トリムコード **410** エンジン型式 **EJ20ENMABA**
 trim code engine type

外装飾コード **230** ミッション型式 **TM752RGAAA**
 Color code transmission type

富士重工業株式会社

GI0011A

IDENTIFICATION

Identification

2. MEANING OF V.I.N. SA06679F7002

The meaning of the VIN is as follows:

- **North America**

]JF1GC435X1G400001[

The starting and ending brackets (] [) are stop marks.

Digits	Code	Meaning	Details
1 to 3	JF1	Manufacturer body area	Passenger car, FHI made, For US/Canada
4	G	Car line	Impreza series
5	C	Body type	C: Sedan G: Station Wagon/OUTBACK Sport M: Coupe
6	4	Displacement	4: 2.2 L AWD 6: 2.5 L AWD
7	3	Grade	2: Brighton 3: L 5: TS 7: RS 8: OUTBACK
8	5	Restraint	5: Manual belts, dual airbag
9	X	Check digit	
10	1	Model year	1: 2001MY 2: 2002MY
11	G	Transmission type	G: Full-time AWD 5-speed MT H: Full-time AWD 4-speed AT
12 to 17	400001	Manufacture number	From 400001: Sedan From 500001: Station Wagon/OUTBACK From 800001: Coupe

IDENTIFICATION

3. MODEL NUMBER PLATE SA06679F7003

The model number plate indicates: the applied model, the option code, the trim code, the engine type, the transmission type, and the exterior color code. This information is helpful when placing orders for parts.

GCEJY7R

Digits	Code	Meaning	Details
1	G	Series	B: Impreza
2	C	Body style	C: Sedan F: Station Wagon/OUTBACK Sports M: Coupe
3	E	Engine displacement Drive system Suspension system	C: 2.2 L AWD E: 2.5 L AWD
4	J	Minor change	2001MY
5	Y	Destination	K: Right-hand drive for general market L: Left-hand drive for general market Y: Left-hand drive for United States, Canada, and Taiwan
6	7	Grade	3: Brighton 4: L 5: TS 6: OUTBACK
7	R	Transmission, fuel feed system	J: SOHC MPI center differential AWD R: SOHC MPI 4-speed AT

The engine and transmission type are as follows:

● Engine

EJ222AXBBB

Digits	Code	Meaning	Details
1 and 2	EJ	Engine type	EJ: 4 cylinders
3 and 4	22	Displacement	22: 2.2 L 25: 2.5 L
5	2	Fuel feed system	1: D-MPI SOHC-A phase-2 or-3 2: D-MPI SOHC-B phase-2 or-3 3: MPI SOHC phase-2 or-3 D: D-MPI DOHC 6 cylinders phase-3
6	A	Exhaust regulations	A: US Federal & California C: US California L: ADR (Australia) M: Germany N: Switzerland, Austria R: Europe
7	X	Transmission	W: AWD MT X: AWD AT
8 to 10	BBB	Detailed specifications	Used when ordering parts. See the parts catalog for details.

IDENTIFICATION

Identification

● Transmission

TV1A4YCAAA

Digits	Code	Meaning	Details
1	T	Transmission	T: Transmission
2	V	Transmission type	Y: Full-time AWD MT center differential V: Full-time AWD AT VTD Z: Full-time AWD AT MPT
3 and 4	1A	Classification	75: MT 1A: New AT
5	4	Series	4: 3rd Generation Legacy
6	A	Transmission specifications	V: Full-time AWD 5-speed MT with viscous coupling center differential single range X: Full-time AWD 5-speed MT with viscous coupling center differential dual range Z: Full-time AWD 4-speed AT with MPT Y: Full-time AWD 4-speed AT with VTD
7	C	Mounted body	C: US 2.5 L SOHC M: US 3.0 L DOHC R: General 2.0 L SOHC F: General 2.5 L SOHC P: General 3.0 L DOHC
8 to 10	AAA	Detailed specifications	Used when ordering parts. See the parts catalog for details.

● Rear differential 1

VA1REF

Digits	Code	Meaning	Details
1	V	For AWD	V: AED
2	A	Type	A: A type
3	1	Hypoid gear diameter	1: 152 dia. 2: 160 dia.
4	R	Installation position	R: Rear
5	E	Reduction gear ratio	E: 4.111 F: 4.444
6	F	Specification differences	F: Case A G: Case B H: Case B with cooling fin

● Rear differential 2

T1

Code	Reduction gear ratio	LSD
T1	3.900	No
T2	4.111	No
TP	4.444	No
BK	4.111	Viscous
BP	4.111	Viscous strengthened type
BL	4.444	Viscous strengthened type
CD	4.444	Viscous
VB	3.700	No