

48. Rear End Wiring Harness of Wagon S903728

A: LOCATION S903728A13

Connector				Connecting to	
No.	Pole	Color	Area	No.	Name
R26	7	★	C-4		Rear combination light RH
R28	7	★	C-2		Rear combination light LH
R32	3	★	C-3		Rear accessory power supply
R36	5	Black	C-4		Rear wiper relay
R37	2	★	C-3	D33	Rear gate cord
R38	4	★	C-3	D34	
R39	4	★	C-3	D35	
R76	2	★	C-3		License plate light LH
R77	2	★	C-3		License plate light RH

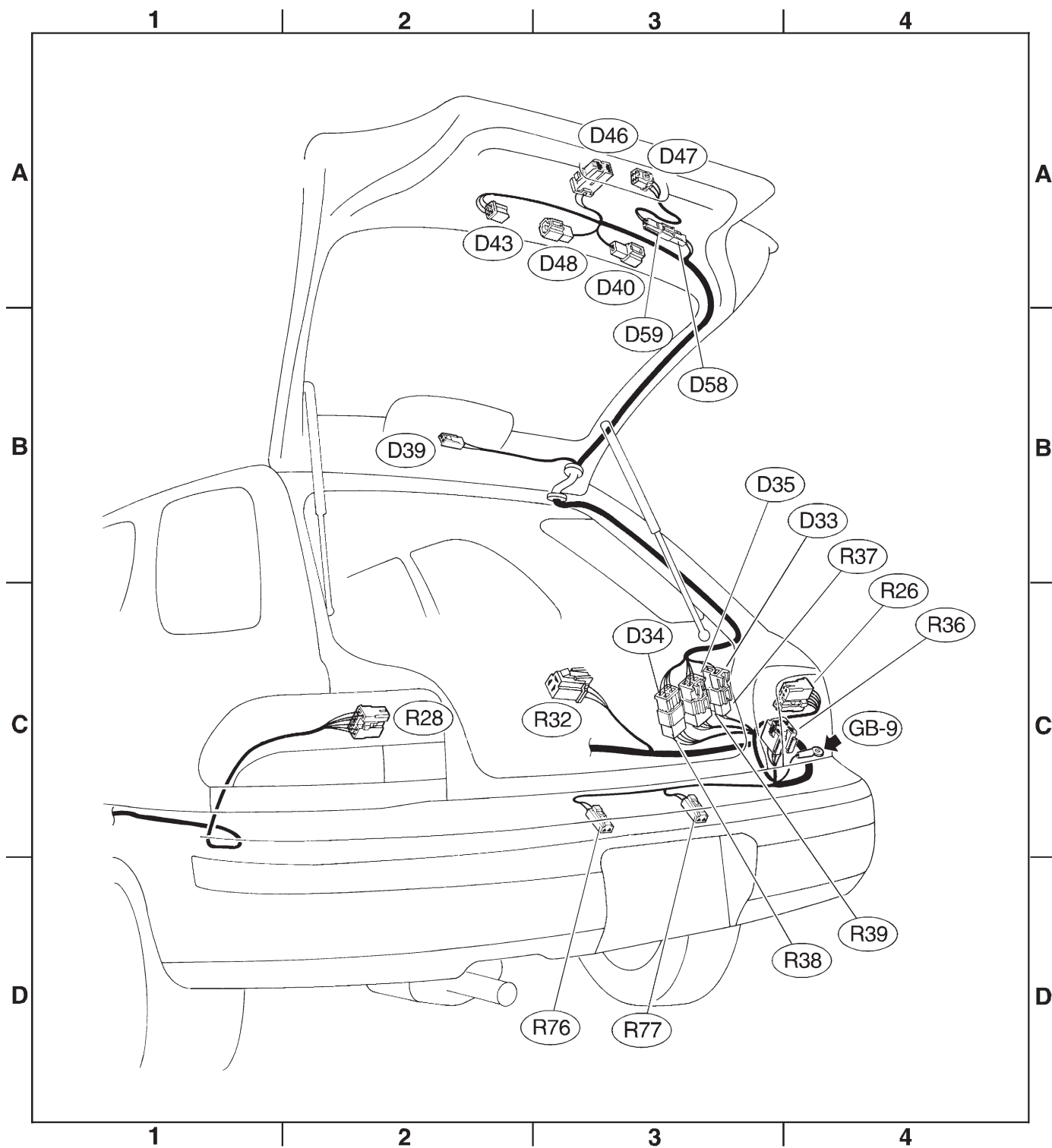
★: Non-colored

Connector				Connecting to	
No.	Pole	Color	Area	No.	Name
D33	2	★	C-3	R37	Rear wiring harness
D34	4	★	C-3	R38	
D35	4	★	C-3	R39	
D39	2	★	B-2		High-mount stop light
D40	1	★	B-3		Rear defogger (Power)
D43	4	★	A-3		Rear wiper motor
D46	2	Black	A-3		Rear gate latch switch
D47	4	★	A-3		Rear gate lock actuator
D48	1	★	A-3		Rear defogger (Ground)
D58	2	★	A-3	D59	Rear gate lock adapter cord
D59	2	★	A-3	D58	Rear gate cord

★: Non-colored

REAR END WIRING HARNESS OF WAGON

Wiring System



H6M0570A