

ENGINE WIRING HARNESS AND TRANSMISSION CORD

WIRING SYSTEM

49.Engine Wiring Harness and Transmission Cord

A: LOCATION

1. TURBO ENGINE MODEL

Connector				Connecting to	
No.	Pole	Color	Area	No.	Name
E1	10	Light gray	A-2	B20	Bulkhead wiring harness
E2	20	Black	B-4	F61	Front wiring harness
E3	16	Brown	B-4	F60	
E4	2	Black	B-3		Purge control solenoid valve
E5	2	Dark gray	A-2		Fuel injector No.1
E6	2	Dark gray	A-2		Fuel injector No.3
E7	3	Black	A-3		Idle air control solenoid valve
E8	3	Light gray	B-3		Engine coolant temperature sensor and thermometer
E10	2	Light gray	B-2		Crank shaft position sensor
E11	1	★	B-2		Oil pressure switch
E13	3	Black	A-3		Throttle position sensor
E14	2	Gray	A-4		Knock sensor
E15	2	Light gray	B-4		Camshaft position sensor
E16	2	Dark gray	B-4		Fuel injector No.2
E17	2	Dark gray	B-4		Fuel injector No.4
E19	1	★	B-3		Power steering oil pressure switch
E21	3	Black	A-3		Pressure sensor
E31	3	★	B-2		Ignition coil No.1
E32	3	★	B-4		Ignition coil No.2
E33	3	Black	A-3		Ignition coil No.3
E34	3	Black	B-4		Ignition coil No.4
E50	3	Black	B-3		TGV angle sensor LH
E51	2	Black	A-4		TGV LH
E54	3	Black	A-3		TGV angle sensor RH
E55	2	Black	A-2		TGV RH

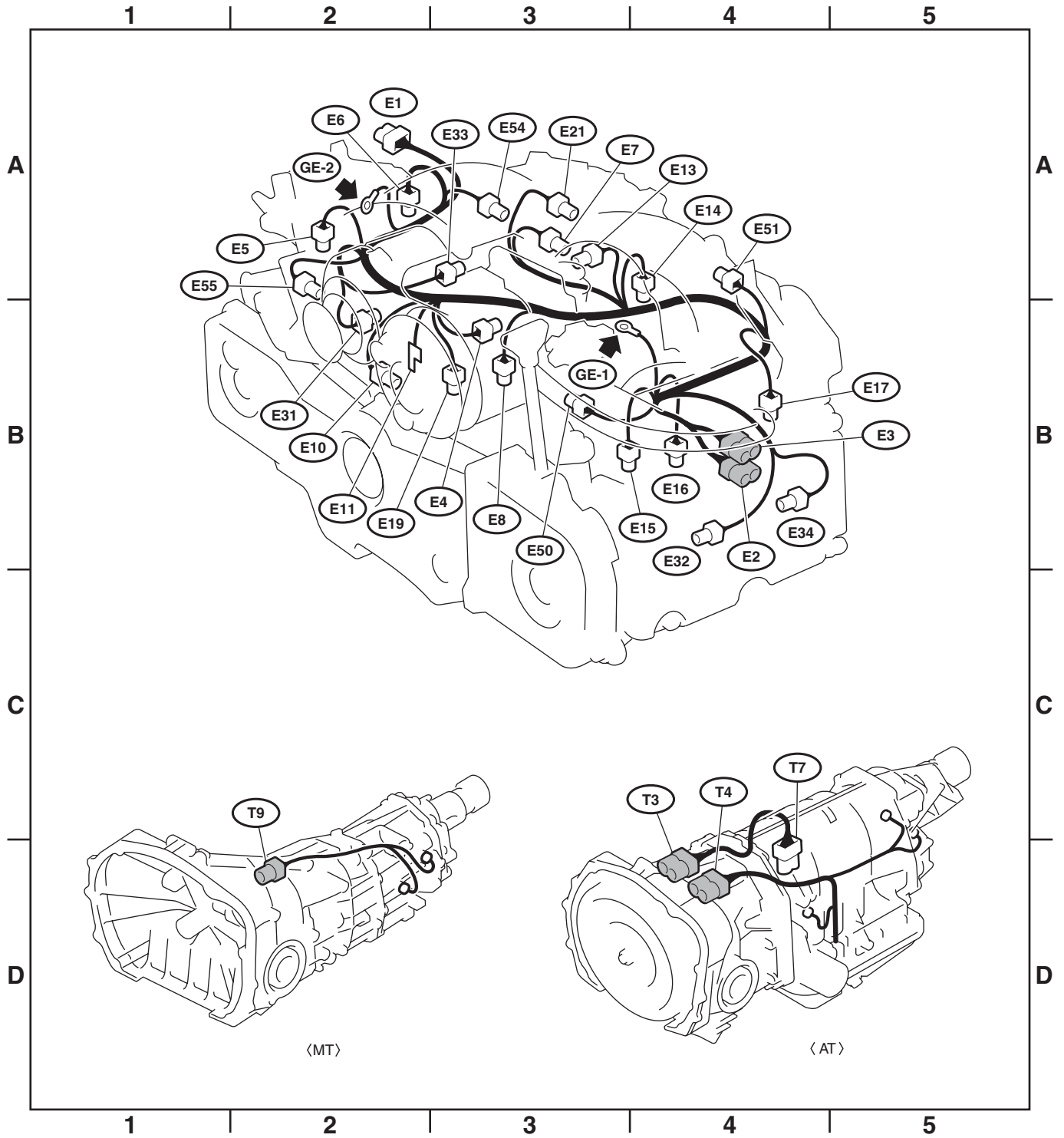
★:Non-colored

Connector				Connecting to	
No.	Pole	Color	Area	No.	Name
T3	12	★	D-4	B12	Bulkhead wiring harness (AT)
T4	20	Black	D-4	B11	
T7	12	★	D-4		Inhibitor switch (AT)
T9	4	★	D-2	B128	Bulkhead wiring harness (MT)

★:Non-colored

ENGINE WIRING HARNESS AND TRANSMISSION CORD

WIRING SYSTEM



WI-02191

ENGINE WIRING HARNESS AND TRANSMISSION CORD

WIRING SYSTEM

2. NON-TURBO ENGINE MODEL

Connector				Connecting to	
No.	Pole	Color	Area	No.	Name
E2	20	Light gray	A-4	B21	Bulkhead wiring harness
E3	16	Brown	A-4	B22	
E4	2	Black	A-3		Purge control solenoid valve
E5	2	Light gray	A-2		Fuel injector No.1
E6	2	Light gray	A-2		Fuel injector No.3
E7	6	Black	B-2		Idle air control solenoid valve
E8	3	Light gray	A-3		Engine coolant temperature sensor and thermometer
E10	2	Light gray	B-3		Crank shaft position sensor
E11	1	★	B-2		Oil pressure switch
E12	4	Dark gray	A-2		Ignition coil and ignitor
E13	4	Dark brown	A-3		Throttle position sensor
E14	2	Light gray	A-3		Knock sensor
E15	2	Gray	B-4		Camshaft position sensor
E16	2	Light gray	B-4		Fuel injector No.2
E17	2	Light gray	B-4		Fuel injector No.4
E19	1	★	B-2		Power steering oil pressure switch
E20	2	Black	A-3		Intake air temperature sensor
E21	3	Light gray	B-3		Pressure sensor
E42	2	Purple	A-3		Air assist injector solenoid valve

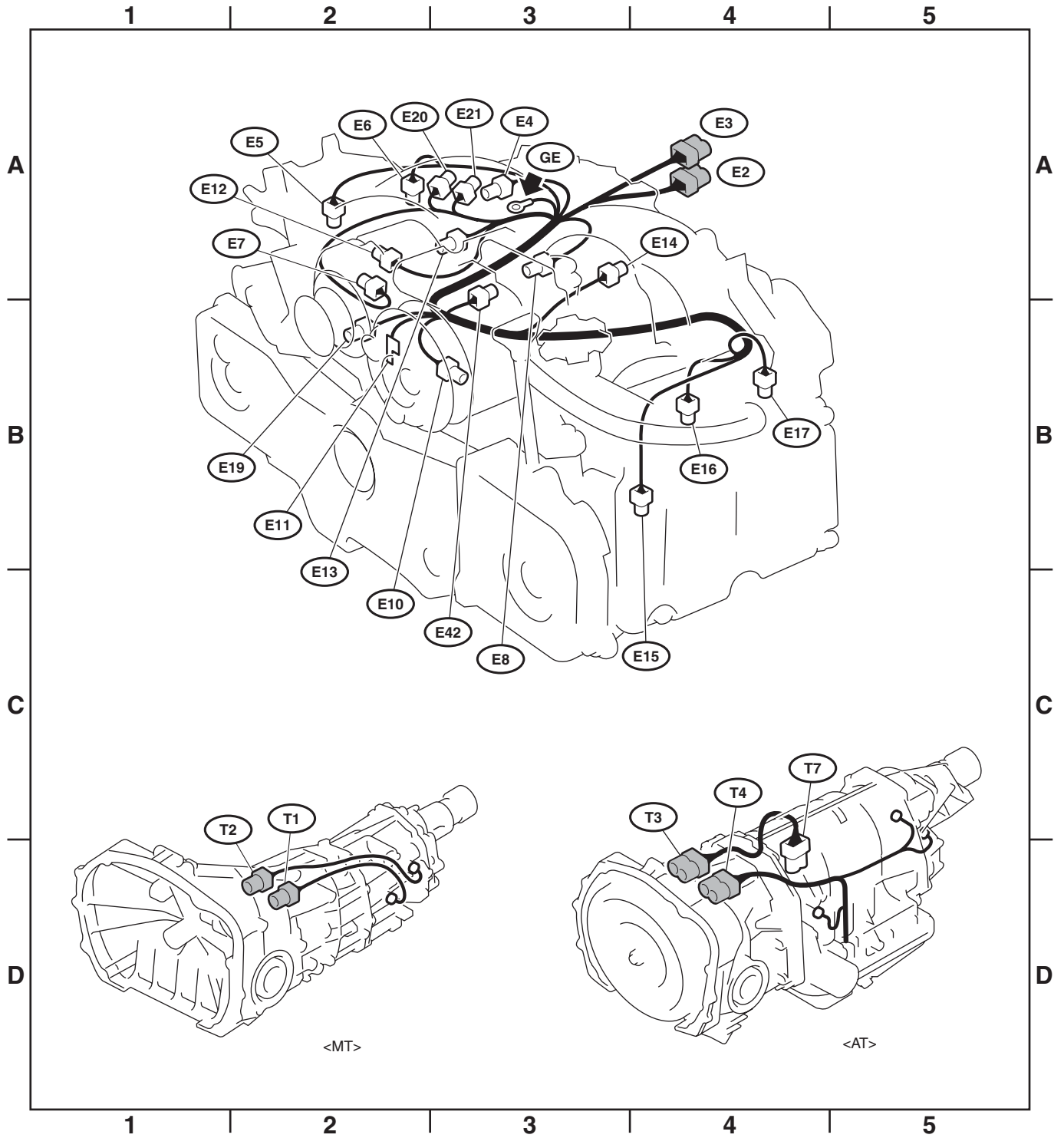
★:Non-colored

Connector				Connecting to	
No.	Pole	Color	Area	No.	Name
T1	2	Gray	D-2	B24	Bulkhead wiring harness (MT)
T2	2	Brown	D-2	B25	
T3	12	★	D-4	B12	Bulkhead wiring harness (AT)
T4	20	Black	D-4	B11	
T7	12	★	D-4		Inhibitor switch (AT)

★:Non-colored

ENGINE WIRING HARNESS AND TRANSMISSION CORD

WIRING SYSTEM



WI-01180