

Brought to you by Eris Studios
NOT FOR RESALE

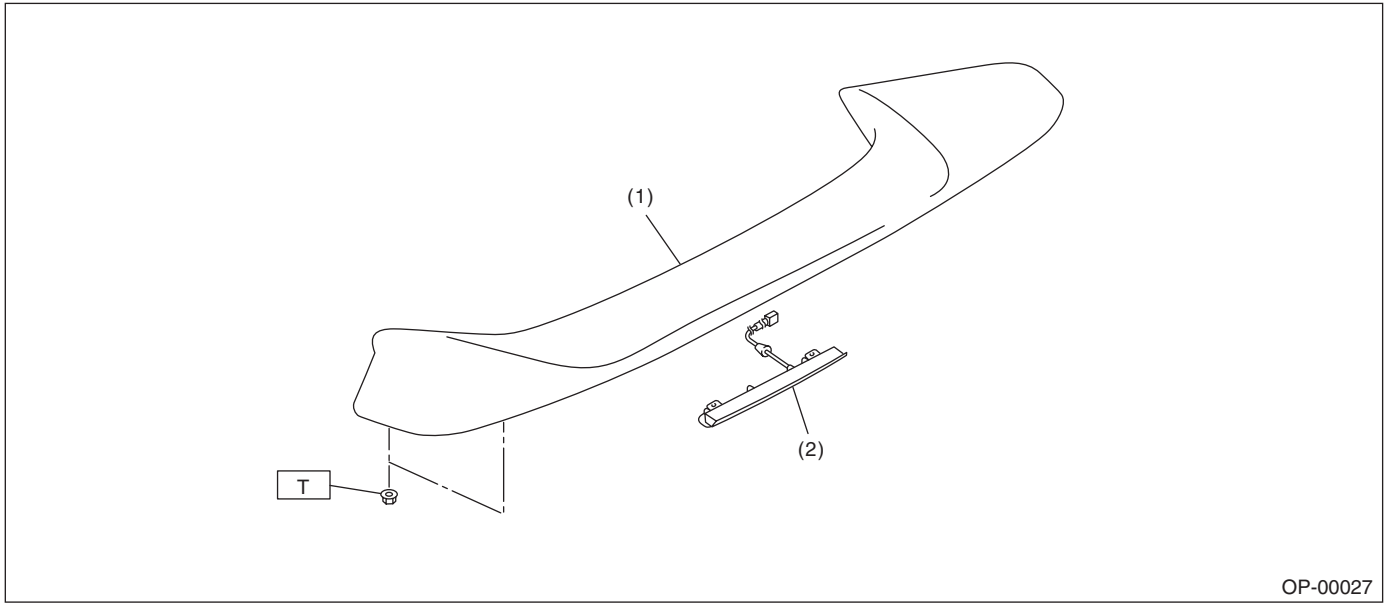
OPTION PARTS

Brought to you by Eris Studios
NOT FOR RESALE

1. General Description

A: COMPONENT

1. REAR SPOILER



OP-00027

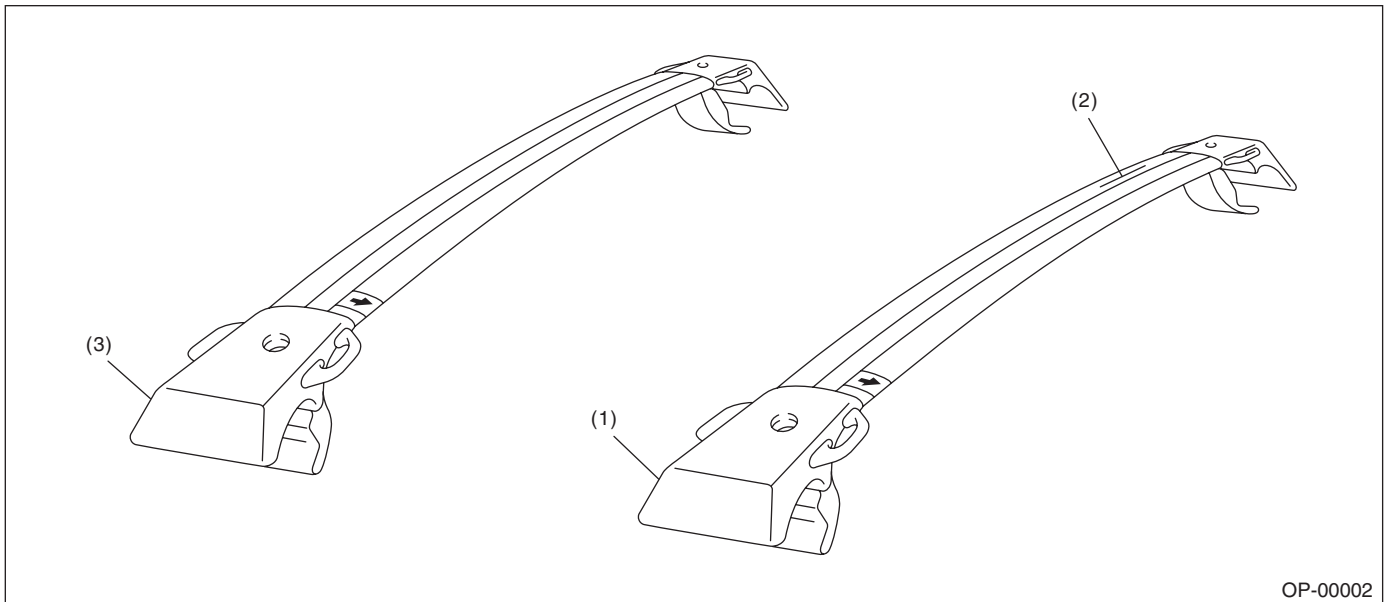
(1) Rear spoiler

(2) High-mounted stop light

Tightening torque: N·m (kgf·m, ft·lb)

T: 7.5±2 (0.76±0.20, 5.5±1.4)

2. CROSSBAR



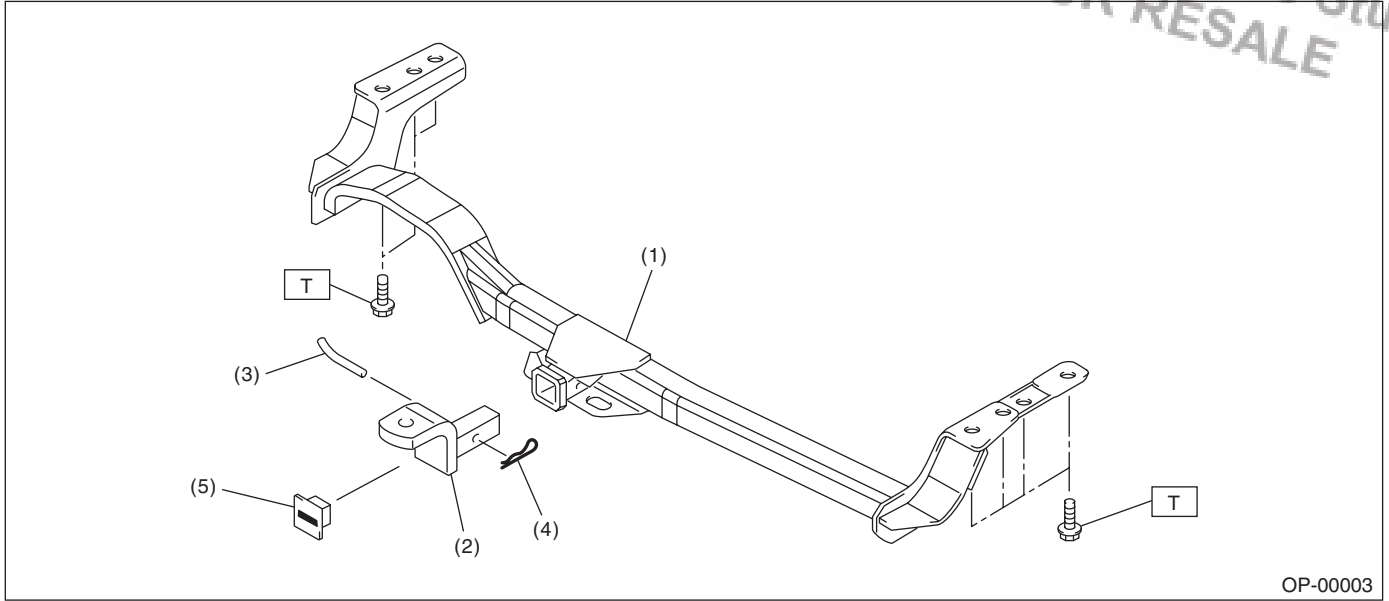
OP-00002

(1) Front crossbar

(2) Caution label (front crossbar)

(3) Rear crossbar

3. TRAILER HITCH



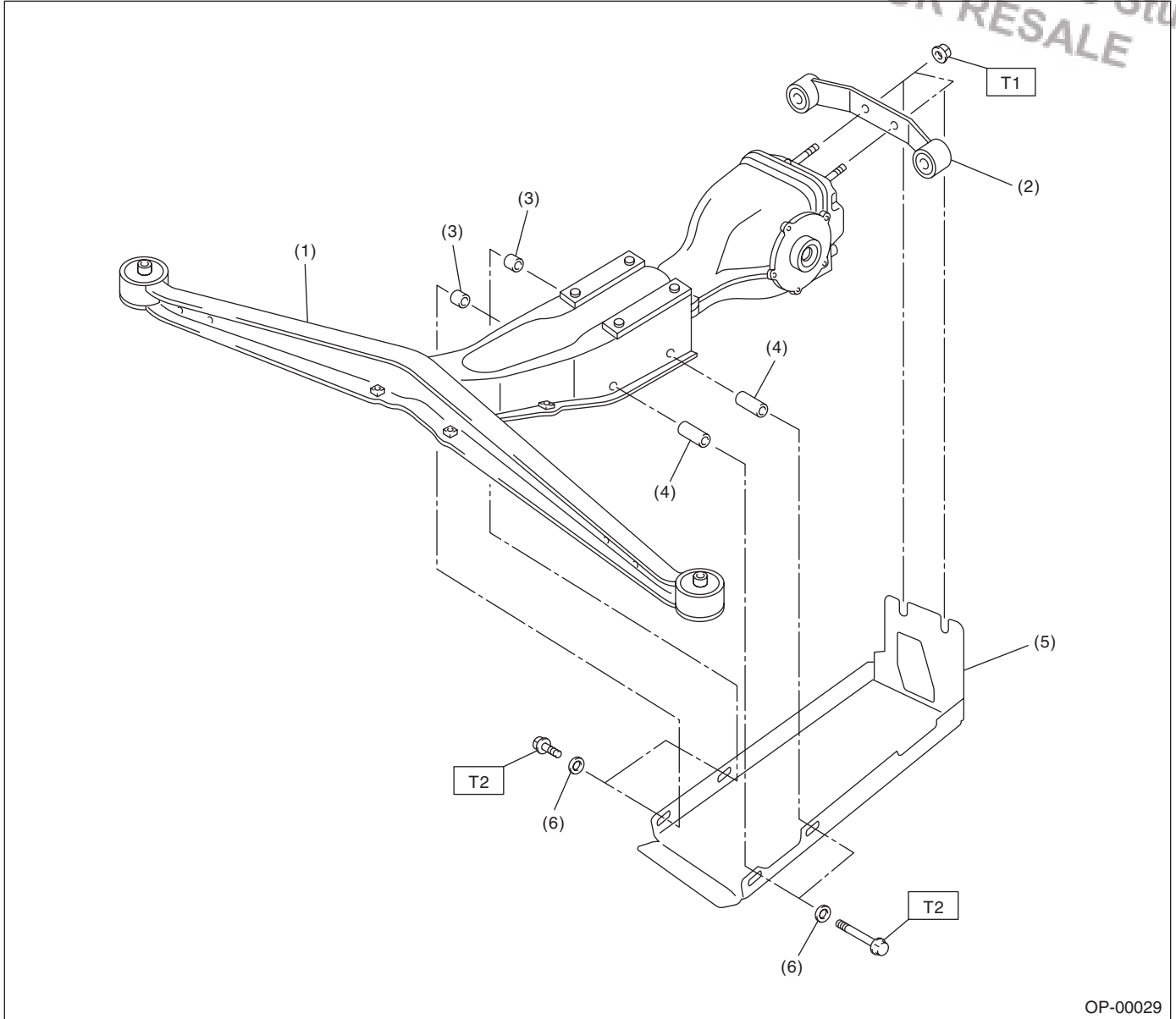
- (1) Receiver hitch
- (2) Ball mount
- (3) Ball mount pin
- (4) Ball mount clip
- (5) Receiver cover

Tightening torque: N·m (kgf·m, ft·lb)
T: 95 (9.7, 70)

General Description

OPTION PARTS

4. REAR DIFFERENTIAL PROTECTOR



OP-00029

- | | |
|-------------------------------|---------------------------------|
| (1) Differential front member | (4) Spacer (long) |
| (2) Differential rear member | (5) Rear differential protector |
| (3) Spacer (short) | (6) Washer |

Tightening torque: N·m (kgf·m, ft·lb)

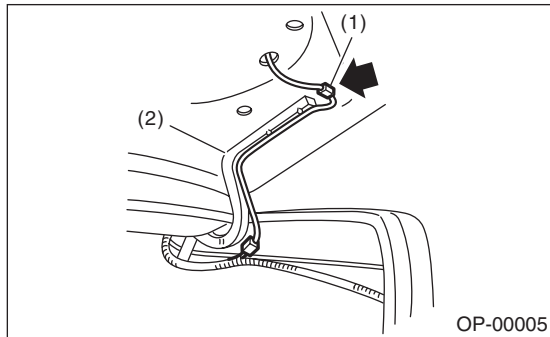
T1: 70 (7.1, 51.6)

T2: 90 (9.2, 66.4)

2. Rear Spoiler

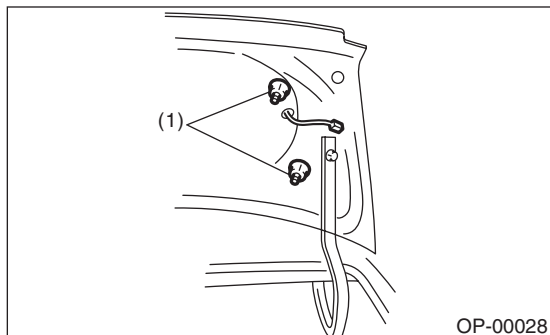
A: REMOVAL

- 1) Disconnect the ground cable from the battery.
- 2) Open the trunk lid.
- 3) Disconnect the connector of high-mounted stop light.



- (1) Connector
(2) Trunk hinge

- 4) Remove the mounting nut of the rear spoiler.



- (1) Mounting nut

- 5) Remove the rear spoiler.

CAUTION:

Be careful not to cause damage during removal and installation.

B: INSTALLATION

Install in the reverse order of removal.

Tightening torque:

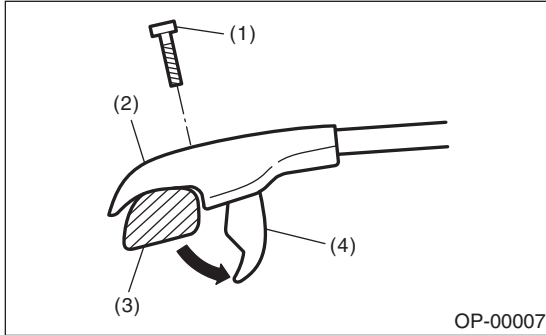
Trunk lid rear spoiler

7.5 ± 2 N·m (0.76 ± 0.20 kgf·m, 5.5 ± 1.4 ft·lb)

3. Crossbar

A: REMOVAL

- 1) Remove TORX® bolt T30 from each end support.
- 2) Turn the lower clamp of each end support 90° downwards to remove the crossbar.



- (1) TORX® bolt T30
- (2) End support
- (3) Roof rail
- (4) Lower clamp

CAUTION:

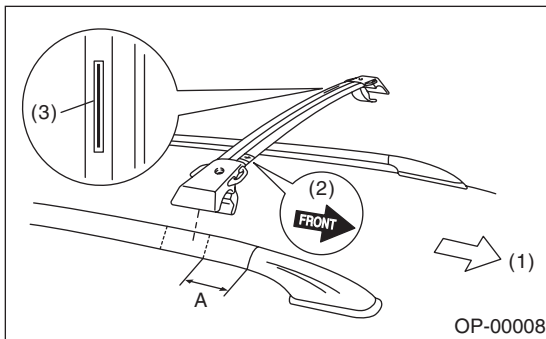
Be careful not to damage the roof panel during removal and installation.

B: INSTALLATION

- 1) Turn the lower clamp of each end support approx. 90° downwards.
- 2) Set the front crossbar with the front direction mark facing in the direction of vehicle front (the front direction mark is on the top right side of the crossbar).
- 3) Place the crossbar end support in the position 76.2 mm (3 in) behind the joint of front roof rail support and roof rail.

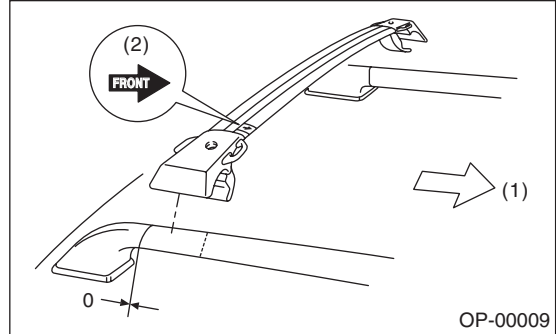
Length A:

76.2 mm (3 in)



- (1) Front of vehicle
- (2) Front direction mark
- (3) Caution label (front crossbar)

- 4) Set the rear crossbar with the front direction mark facing in the direction of vehicle front. (the front direction mark is on the top right side of the crossbar).
- 5) Place the crossbar end support at the joint of rear roof rail support and roof rail.



- (1) Front of vehicle
- (2) Front identification mark

- 6) Tighten the end support and clamp using TORX® bolt T30.

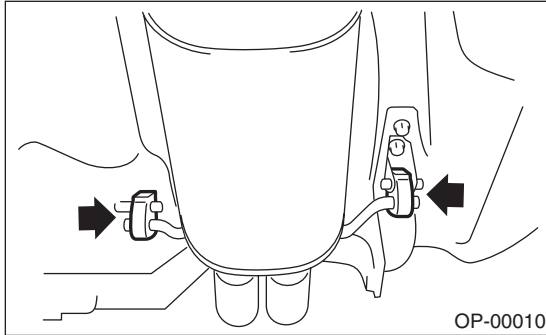
4. Trailer Hitch

A: REMOVAL

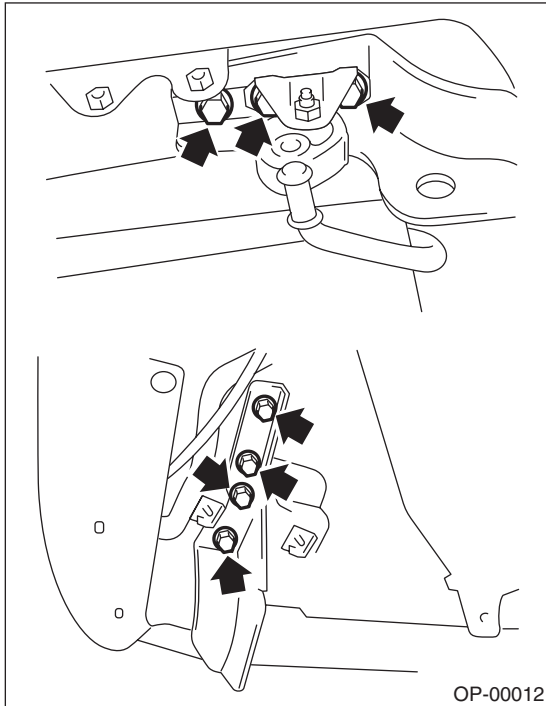
CAUTION:

Because the trailer hitch is heavy, two people are required to install it.

- 1) Lift up the vehicle.
- 2) Remove the cushion rubber from the vehicle body.



- 3) Remove the canister. <Ref. to EC(H4SO)-6, REMOVAL, Canister.>
- 4) Remove the trailer hitch attaching bolt.



- 5) Remove the trailer hitch with the exhaust pipe lowered.

B: INSTALLATION

CAUTION:

Because the trailer hitch is heavy, two people are required to remove it.

Install in the reverse order of removal.

Tightening torque:

Trailer hitch to body

95 N·m (9.7 kgf-m, 70 ft-lb)

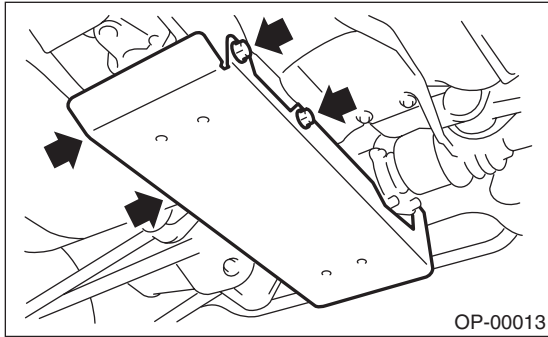
Canister:

23 N·m (2.3 kgf-m, 17 ft-lb)

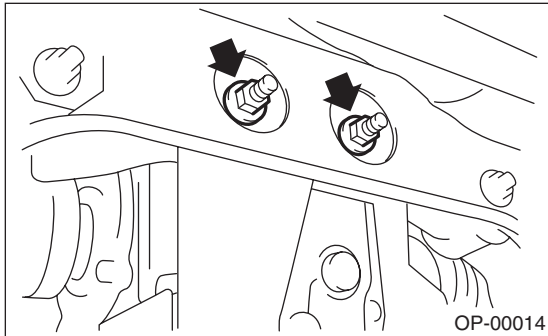
5. Rear Differential Protector

A: REMOVAL

- 1) Remove the rear exhaust pipe and muffler. <Ref. to EX(H4SO)-8, Rear Exhaust Pipe.> <Ref. to EX(H4SO)-9, Muffler.> <Ref. to EX(H4DOTC)-15, Rear Exhaust Pipe.> <Ref. to EX(H4DOTC)-17, Muffler.>
- 2) Remove the differential front member attaching bolt.



- 3) Loosen the nuts to remove the rear differential protector.



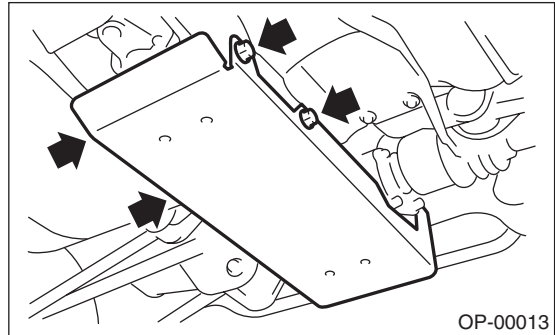
- 4) Remove the rear differential protector.

B: INSTALLATION

Install in the reverse order of removal.

Tightening torque:

90 N·m (9.2 kgf-m, 66.4 ft-lb)



NOTE:

Install the protector between the nuts and differential rear member.

Tightening torque:

70 N·m (7.1 kgf-m, 51.6 ft-lb)

