

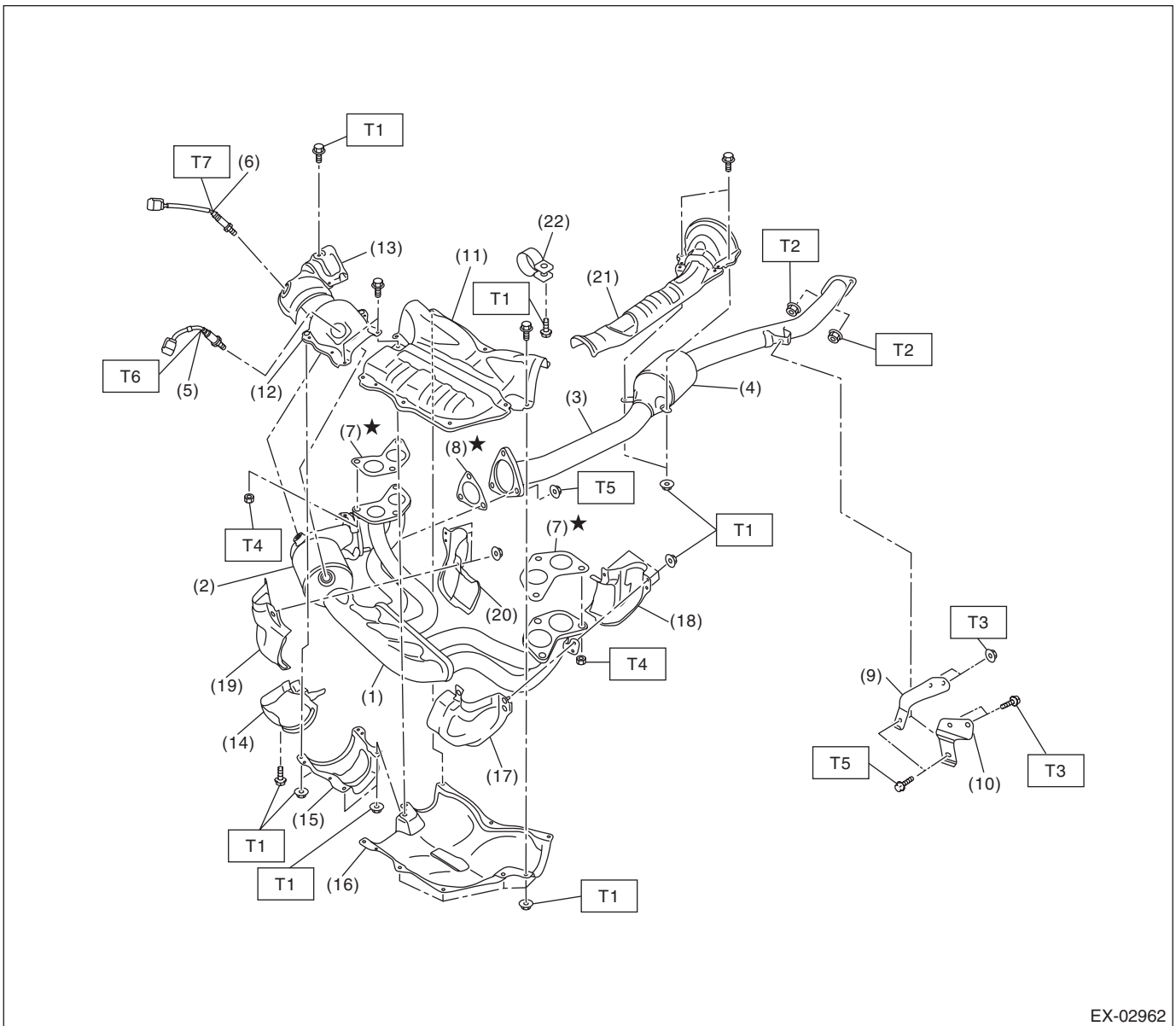
General Description

EXHAUST

1. General Description

A: COMPONENT

1. FRONT EXHAUST PIPE AND CENTER EXHAUST PIPE



General Description

EXHAUST

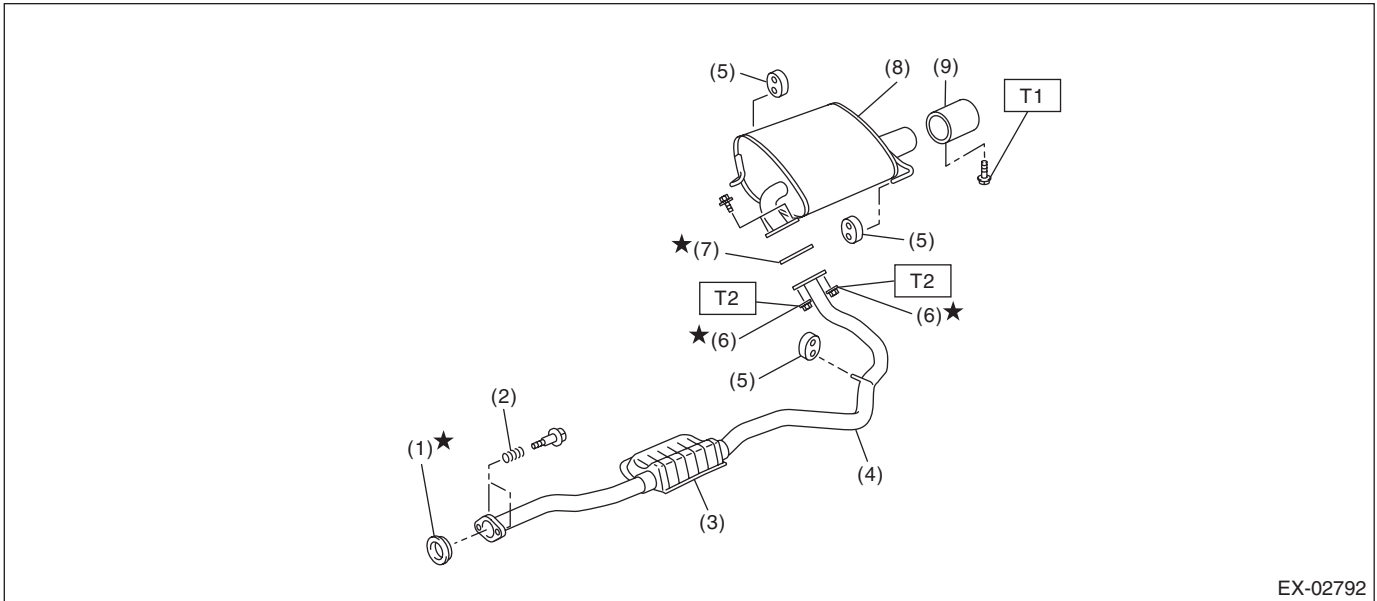
| | | |
|-------------------------------------|---|---|
| (1) Front exhaust pipe | (12) Front catalytic converter upper cover LH | (22) Band |
| (2) Front catalytic converter | (13) Front catalytic converter upper cover RH | |
| (3) Center exhaust pipe | (14) Front catalytic converter lower cover RH | <i>Tightening torque: N·m (kgf-m, ft-lb)</i> |
| (4) Rear catalytic converter | (15) Front catalytic converter lower cover LH | <i>T1: 13 (1.3, 9.6)</i> |
| (5) Front oxygen (A/F) sensor | (16) Front exhaust pipe lower cover | <i>T2: 18 (1.8, 13.3)</i> |
| (6) Rear oxygen sensor | (17) Front exhaust pipe side cover LH (front) | <i>T3: 23 (2.3, 17.0)</i> |
| (7) Gasket | (18) Front exhaust pipe side cover LH (rear) | <i>T4: 30 (3.1, 22.1)</i> |
| (8) Gasket | (19) Front exhaust pipe side cover RH (front) | <i>T5: 35 (3.6, 25.8)</i> |
| (9) Hanger bracket (MT model) | (20) Front exhaust pipe side cover RH (rear) | <i>T6: <Ref. to FU(H4DO)-95, INSTALLATION, Front Oxygen (A/F) Sensor.></i> |
| (10) Hanger bracket (CVT model) | (21) Center exhaust pipe upper cover | <i>T7: <Ref. to FU(H4DO)-99, INSTALLATION, Rear Oxygen Sensor.></i> |
| (11) Front exhaust pipe upper cover | | |

General Description

EXHAUST

2. REAR EXHAUST PIPE AND MUFFLER

- 4 door model



EX-02792

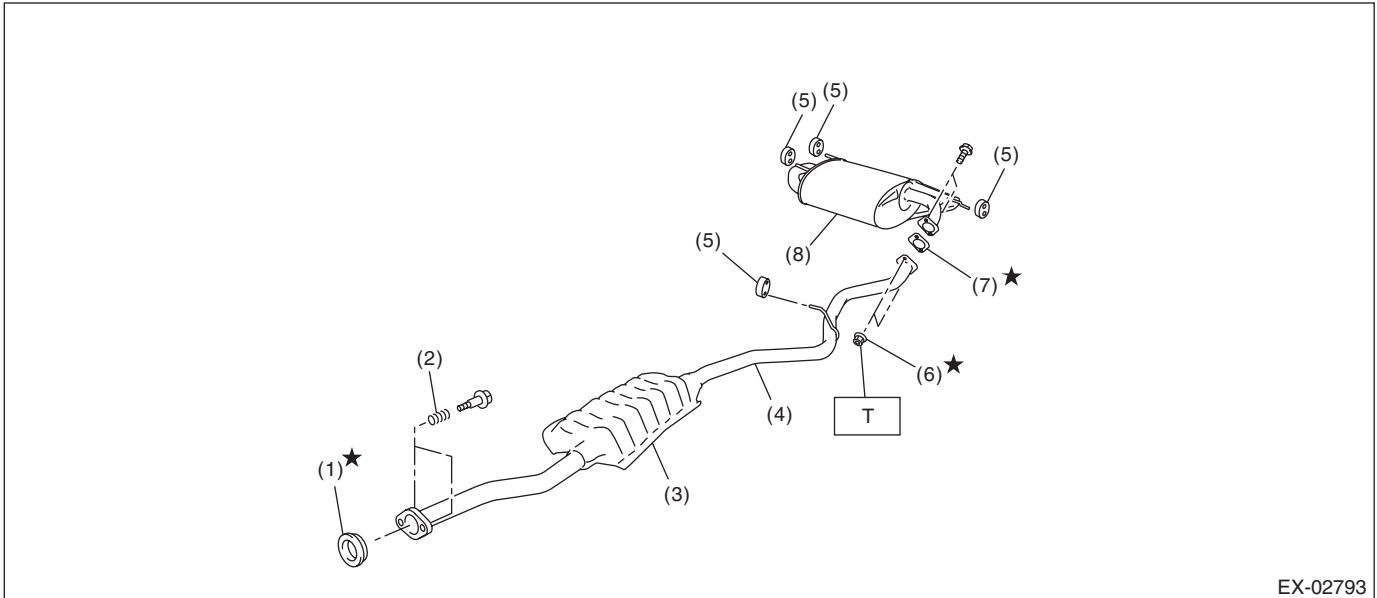
- | | |
|-----------------------|---|
| (1) Gasket | (6) Self-locking nut |
| (2) Spring | (7) Gasket |
| (3) Chamber | (8) Muffler |
| (4) Rear exhaust pipe | (9) Muffler cutter (models with muffler cutter) |
| (5) Cushion rubber | |

Tightening torque: N·m (kgf·m, ft·lb)

T1: 7.5 (0.8, 5.5)

T2: 48 (4.9, 35.4)

- 5 door model/XV model

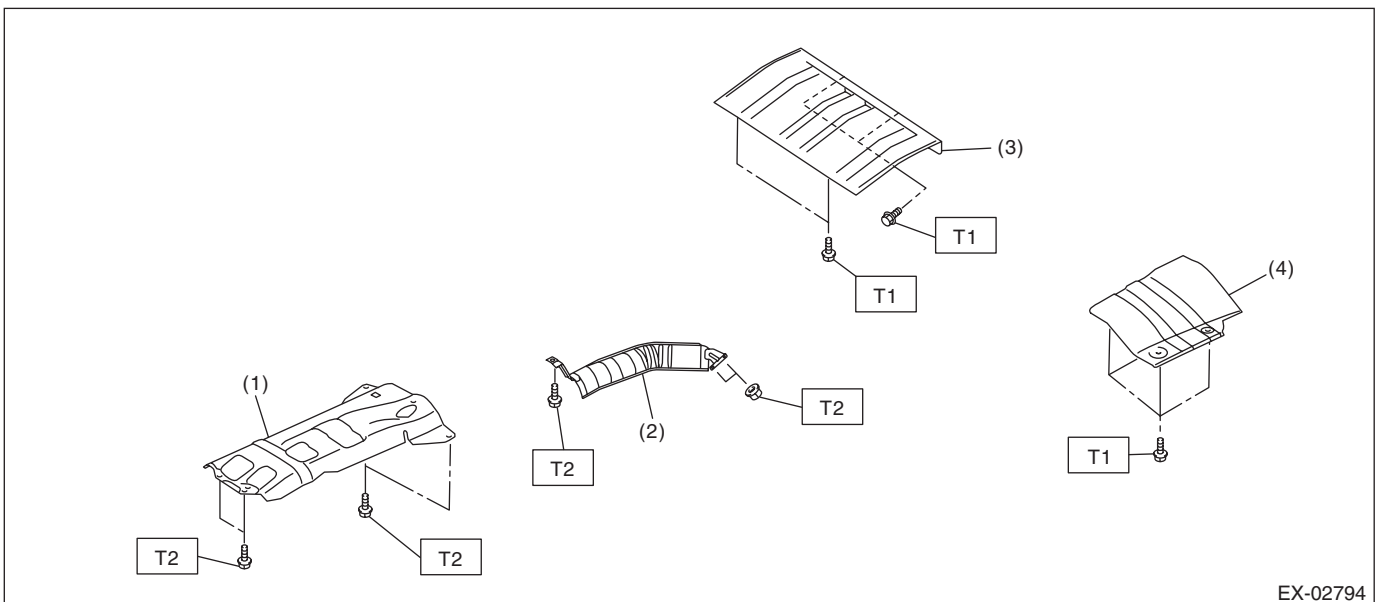


- | | |
|-----------------------|----------------------|
| (1) Gasket | (5) Cushion rubber |
| (2) Spring | (6) Self-locking nut |
| (3) Chamber | (7) Gasket |
| (4) Rear exhaust pipe | (8) Muffler |

Tightening torque: N·m (kgf·m, ft·lb)

T: 48 (4.9, 35.4)

3. HEAT SHIELD COVER



- | | |
|--|---------------------------------------|
| (1) Center exhaust cover | (4) Rear exhaust cover (4 door model) |
| (2) Fuel tank cover | |
| (3) Rear exhaust cover (5 door model/XV model) | |

Tightening torque: N·m (kgf·m, ft·lb)

T1: 10 (1.0, 7.4)

T2: 18 (1.8, 13.3)

General Description

EXHAUST

B: CAUTION

- Prior to starting work, pay special attention to the following:
 1. Always wear work clothes, a safety cap, protective shoes. Additionally, wear a helmet, protective goggles, etc. if necessary.
 2. Protect the vehicle using a seat cover, fender cover, etc.
 3. Prepare the service tools, clean cloth, containers to catch grease and oil, etc.
- Vehicle components are extremely hot immediately after driving. Be wary of receiving burns from heated parts.
- When performing a repair, identify the cause of trouble and avoid unnecessary removal, disassembly and replacement.
- Before disconnecting connectors of sensors or units, be sure to disconnect the ground cable from battery.
- Always use the jack-up point when the shop jacks or rigid racks are used to support the vehicle.
- Remove contamination including dirt and corrosion before removal, installation, disassembly or assembly.
- Keep the removed parts in order and protect them from dust and dirt.
- All removed parts, if to be reused, should be reinstalled in the original positions with attention to the correct directions, etc.
- Bolts, nuts and washers should be replaced with new parts as required.
- Be sure to tighten the fasteners including bolts and nuts to the specified torque.
- If any fat adheres to the exhaust pipe, wipe it off. Otherwise a fire may happen.