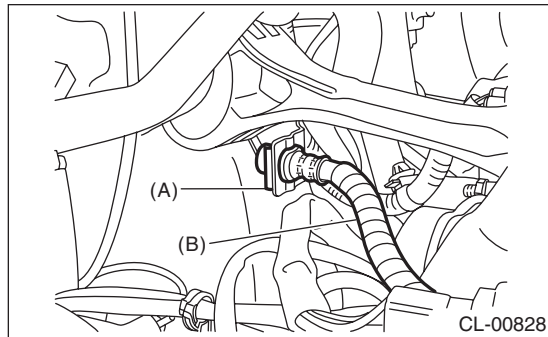


7. Clutch Pipe and Hose

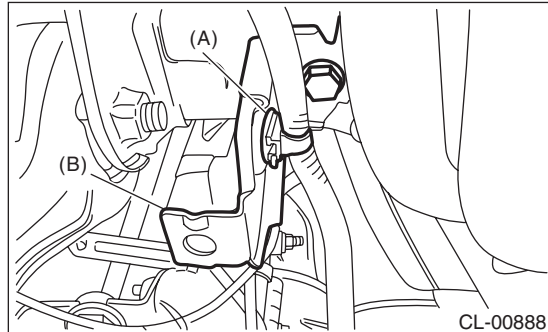
A: REMOVAL

- 1) Remove the air intake boot assembly. <Ref. to IN(H4DO)-12, REMOVAL, Air Intake Boot.>
- 2) Drain the clutch fluid. <Ref. to CL-20, Clutch Fluid.>
- 3) Disconnect the clutch pipe from the clutch hose and master cylinder.
- 4) Pull out the clamp, then disconnect the clutch hose from the bracket.



- (A) Clamp
- (B) Clutch hose

- 5) Remove the clutch hose from operating cylinder.
- 6) Remove the harness clip from the bracket.



- (A) Harness clip
- (B) Bracket

- 7) Remove the bracket.

B: INSTALLATION

Install in the reverse order of removal.

NOTE:

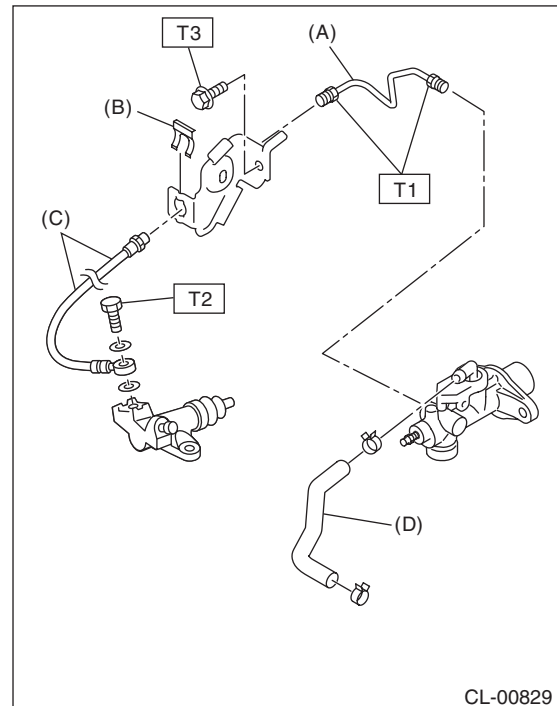
Bleed air from the clutch fluid. <Ref. to CL-21, Clutch Fluid Air Bleeding.>

Tightening torque:

T1: 15 N·m (1.5 kgf-m, 11.1 ft-lb)

T2: 18 N·m (1.8 kgf-m, 13.3 ft-lb)

T3: 25 N·m (2.5 kgf-m, 18.4 ft-lb)



- (A) Clutch pipe
- (B) Clamp
- (C) Clutch hose
- (D) Tank hose

C: INSPECTION

Check the pipes and hoses for breaks and damage. Check joints for fluid leakage. If crack, breakage or damage is found, repair or replace the faulty pipe or hose.