

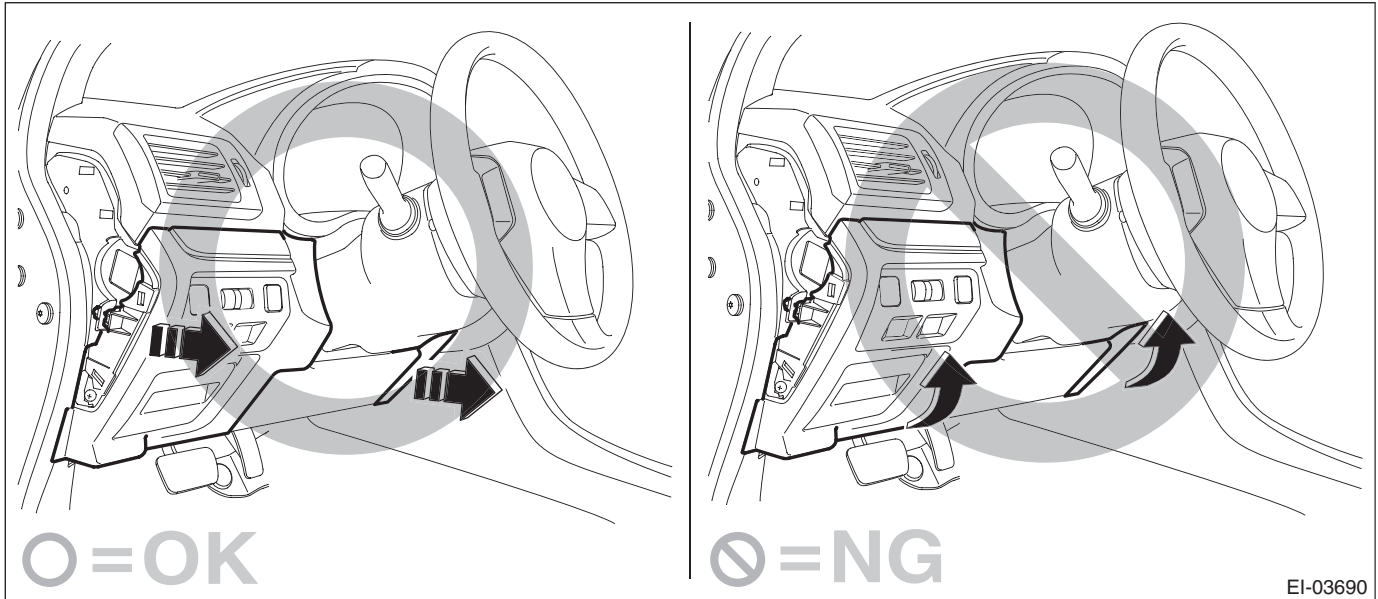
15. Stop Light Switch

A: REMOVAL

- 1) Disconnect the ground cable from battery and wait for at least 60 seconds before starting work.
- 2) Remove the cover assembly - instrument panel LWR driver.

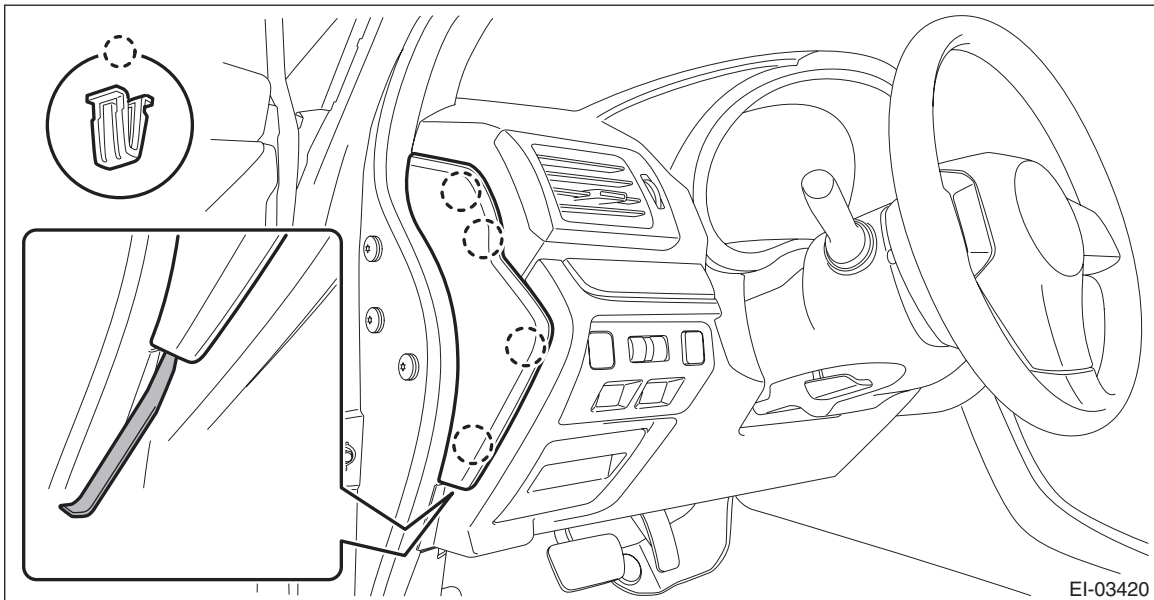
CAUTION:

When removing the cover assembly - instrument panel LWR driver, be sure to pull it toward you. If attempting to remove by turning it upward, the claws may be damaged.



EI-03690

- (1) Remove the clips, and remove the cover - instrument panel side LH.



EI-03420

NOTE:

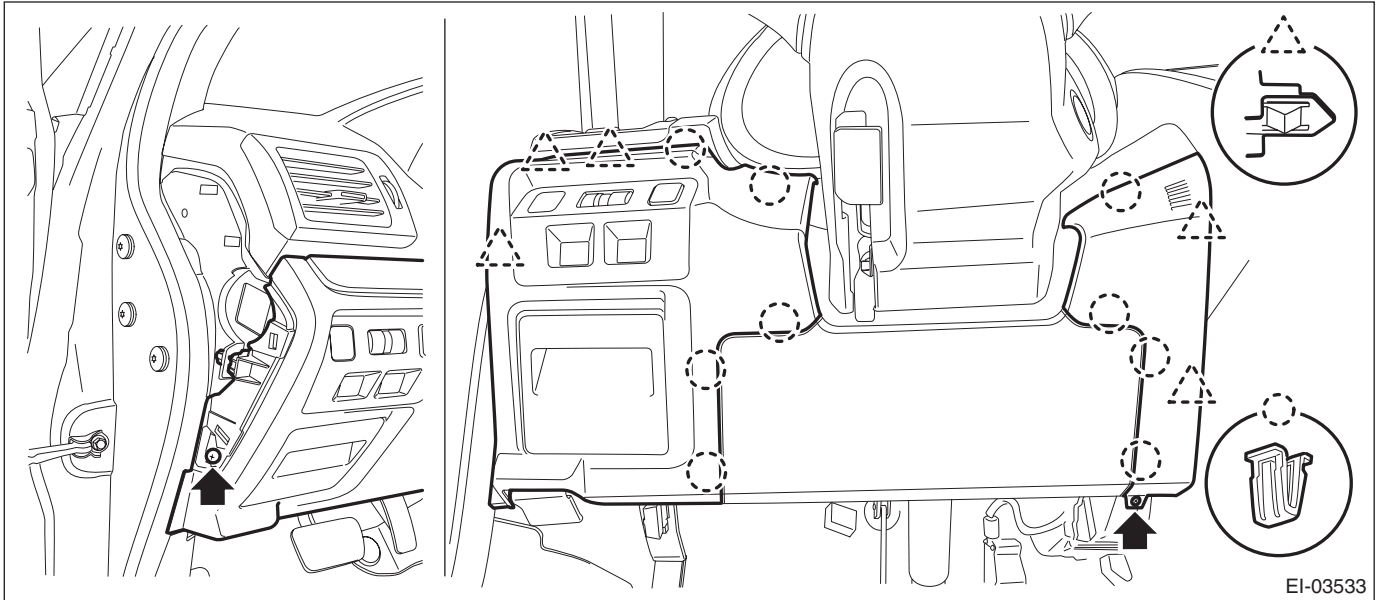
Using a plastic remover, open the cover - instrument panel side LH.

- (2) Remove the screws and release the clips and claws.

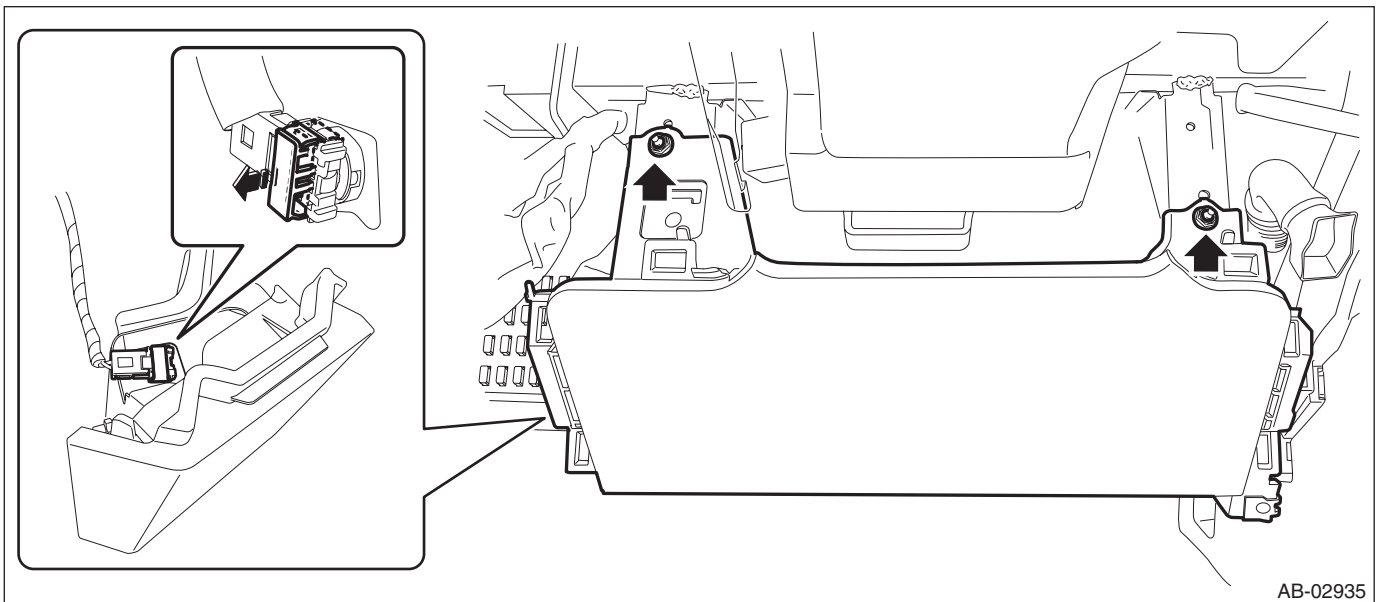
Stop Light Switch

BRAKE

(3) Disconnect the harness connectors, and remove the cover assembly - instrument panel LWR driver INN and OUT.



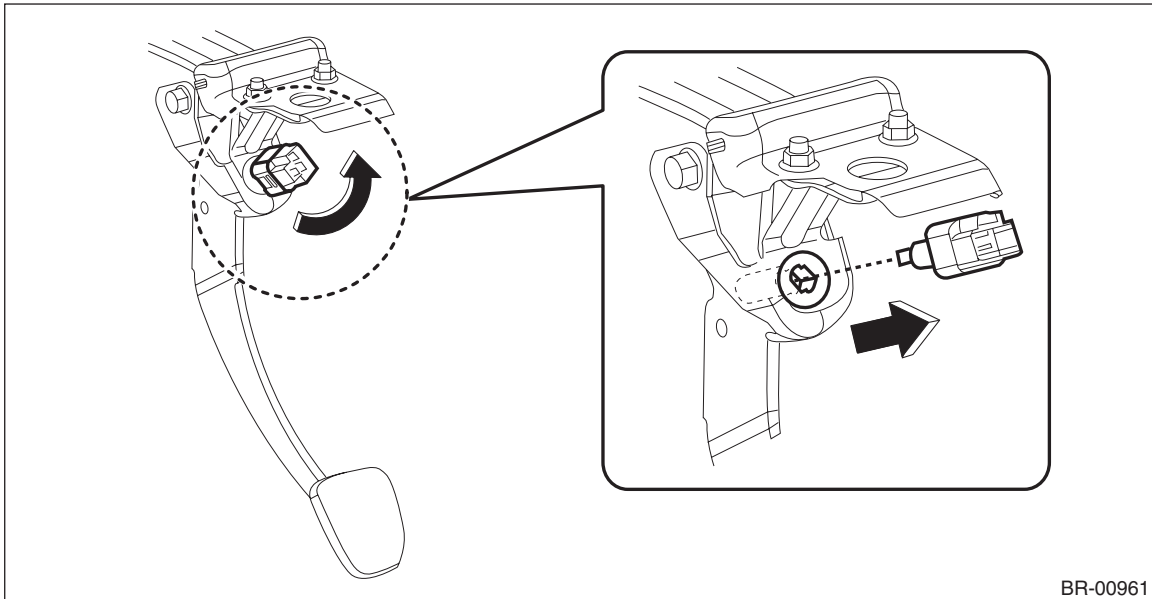
3) Remove the nuts to remove the knee airbag module and disconnect the harness connector. <Ref. to AB-33, KNEE AIRBAG MODULE, PROCEDURE, Airbag Connector.>



4) Remove the switch - stop light.

(1) Disconnect the switch - stop light connector.

(2) Remove the switch - stop light by turning it counterclockwise.



B: INSTALLATION

1) Adjust the position of the switch - stop light, and then secure the stop light switch by turning it clockwise.

<Ref. to BR-76, ADJUSTMENT, Stop Light Switch.>

2) Install each part in the reverse order of removal.

Tightening torque:

Knee airbag module: 7.5 N·m (0.76 kgf-m, 5.5 ft-lb)

Stop Light Switch

BRAKE

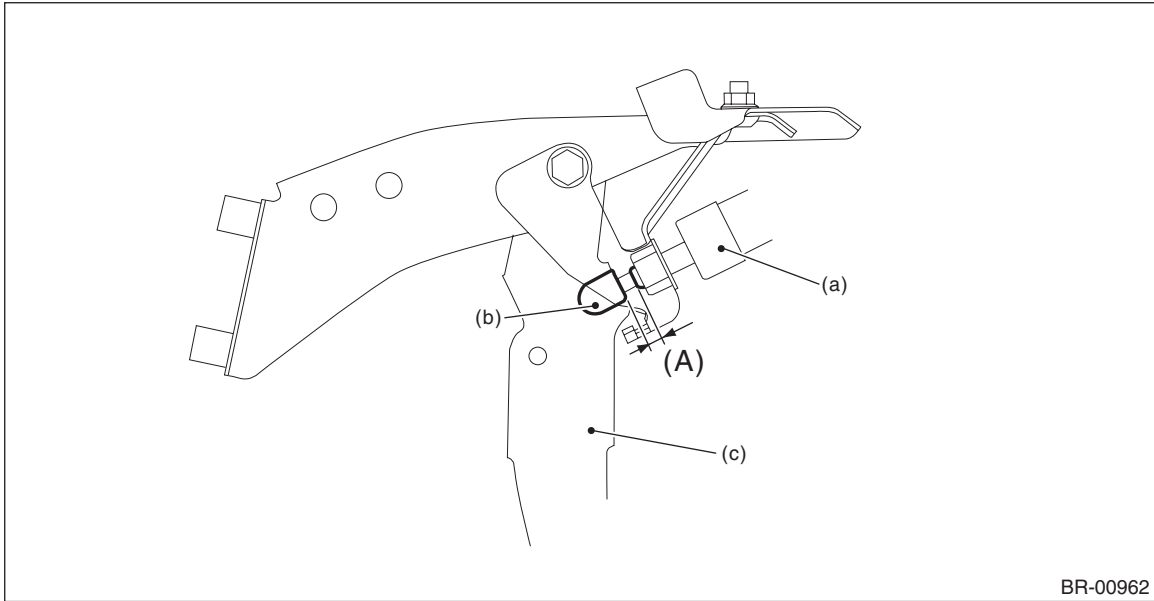
C: INSPECTION

1. CLEARANCE CHECK

1) Measure the clearance between the end of the switch - stop light and the stopper.

Specification:

Clearance (A) of the switch - stop light: 1 mm — 2 mm (0.04 in — 0.08 in)



(a) Switch - stop light

(b) Stopper

(c) Brake pedal

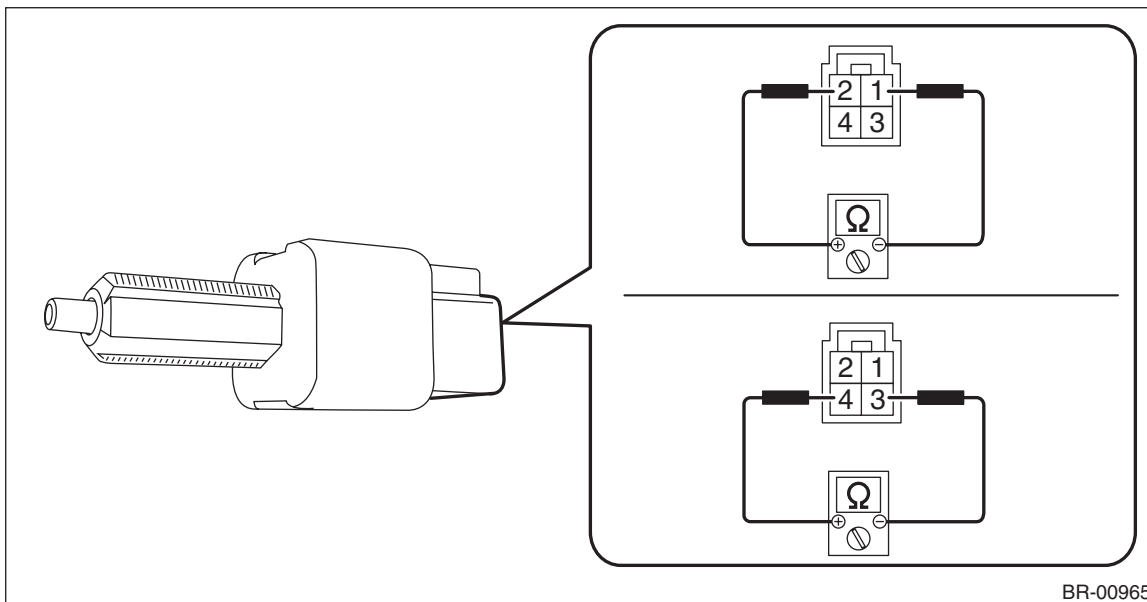
2) Adjust the position of the switch - stop light if the inspection result is not within the standard value. <Ref. to BR-76, ADJUSTMENT, Stop Light Switch.>

2. CHECK RESISTANCE

- 1) Disconnect the switch - stop light connector.
- 2) Check the resistance between the terminals of switch - stop light.

Preparation tool:

Circuit tester



| Terminal No. | Inspection conditions | Standard |
|--------------|-------------------------------|---------------|
| 1 — 2 | When brake pedal is depressed | 1 MΩ or more |
| | When brake pedal is released | Less than 1 Ω |
| 3 — 4 | When brake pedal is depressed | Less than 1 Ω |
| | When brake pedal is released | 1 MΩ or more |

- 3) Replace the switch - stop light if the inspection result is not within the standard value.

Stop Light Switch

BRAKE

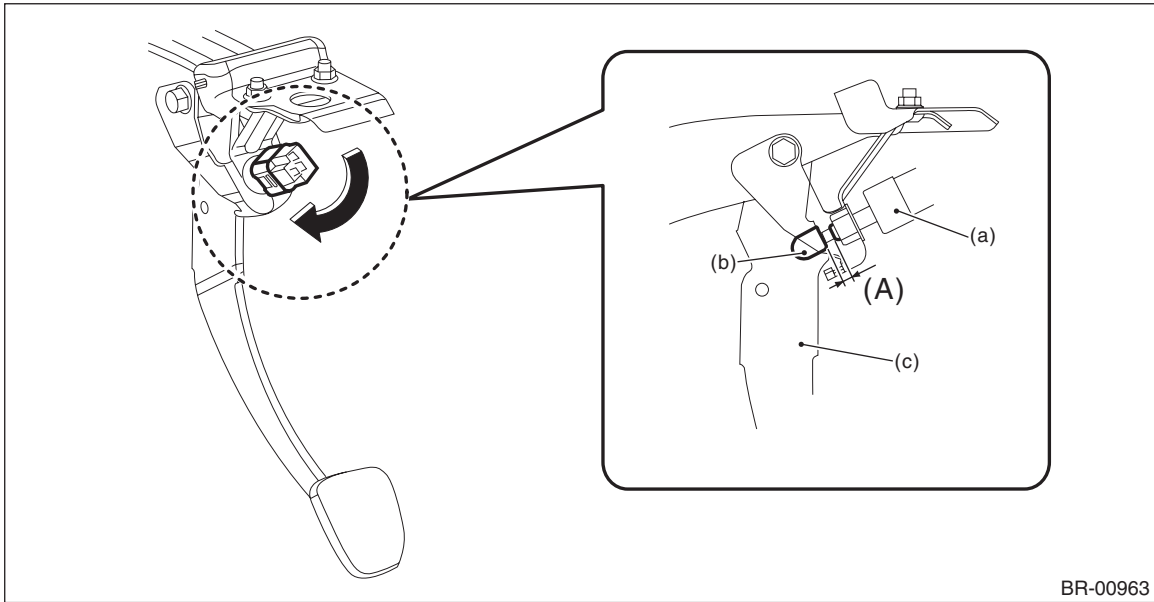
D: ADJUSTMENT

- 1) While pulling up the brake pedal (c) toward you, insert the switch - stop light (a) until it reaches the stopper (b).
- 2) Install the switch - stop light by turning it clockwise.

CAUTION:

Turn the switch - stop light clockwise when installing so that it can return backward by approximately 1 mm (0.04 in) and clearance is automatically adjusted.

Insert until it contacts the stopper, and make sure that clearance (A) of the end of switch - stop light and the stopper is 1 mm — 2 mm (0.04 in — 0.08 in).



BR-00963

(a) Switch - stop light

(b) Stopper

(c) Brake pedal