

10. Outer Mirror

A: REPLACEMENT

CAUTION:

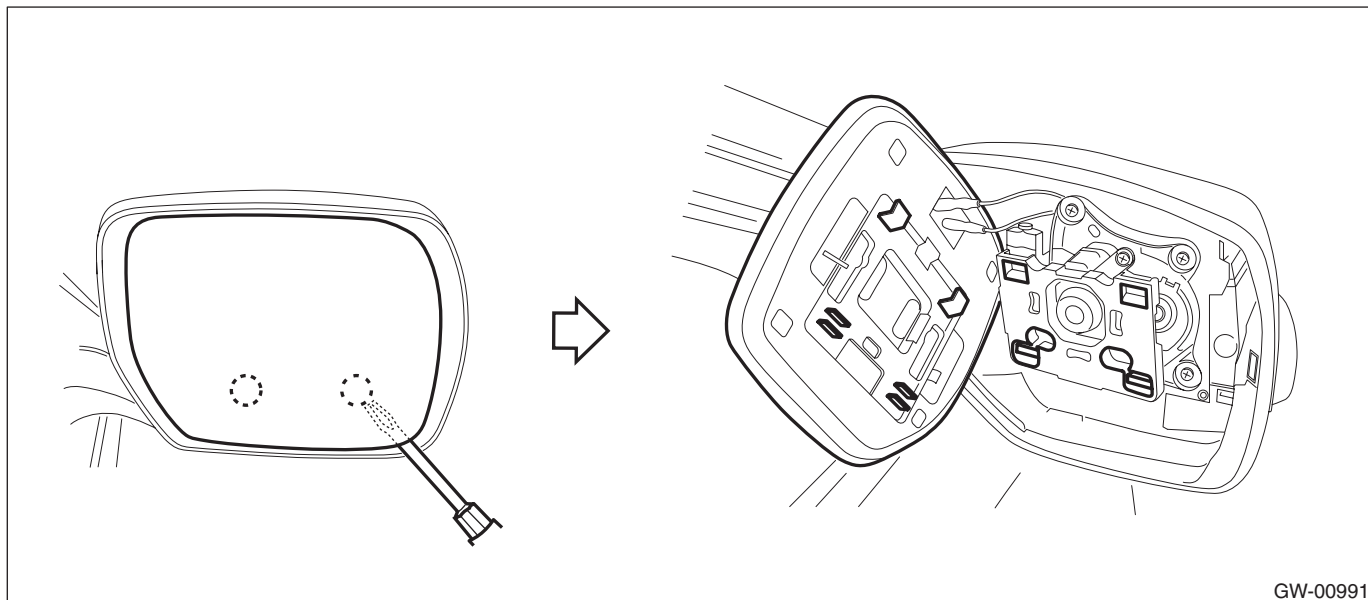
- When removing the mirror - repair, be careful not to damage the back surface of mirror - repair with a flat tip screwdriver.
- When installing the mirror - repair, insert the connector and clip securely.

1) Operate the remote control mirror switch to face the mirror - repair upward.

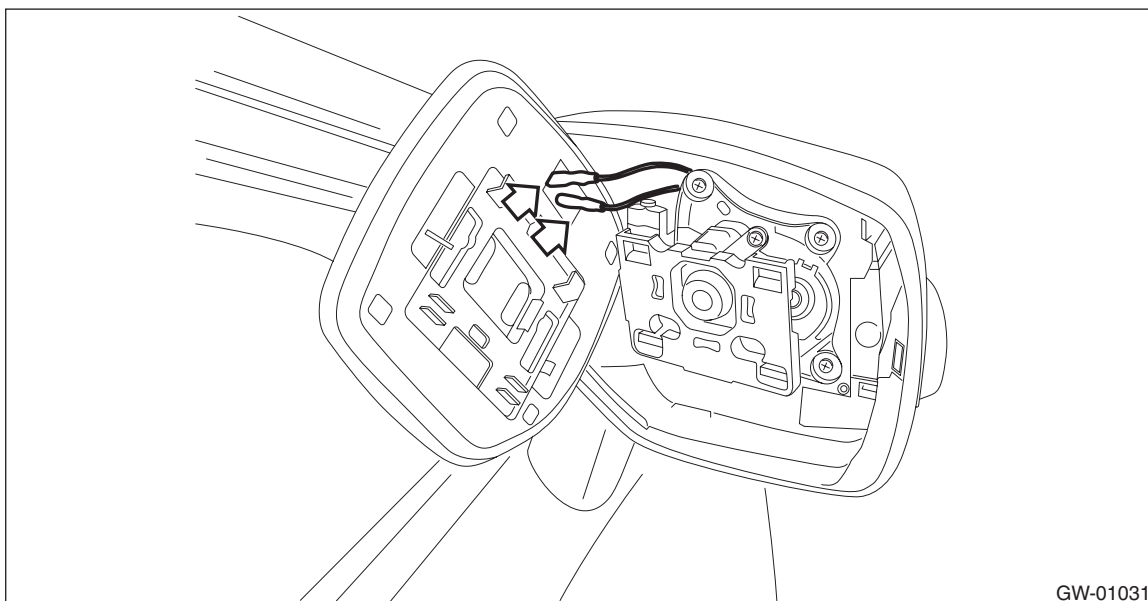
2) Disconnect the ground cable from battery.

3) Remove the mirror - repair.

(1) Disconnect the clips using a flat tip screwdriver.



(2) Disconnect the mirror heater connector. (Model with mirror heater)



4) Install the mirror - repair in the reverse order of removal.