

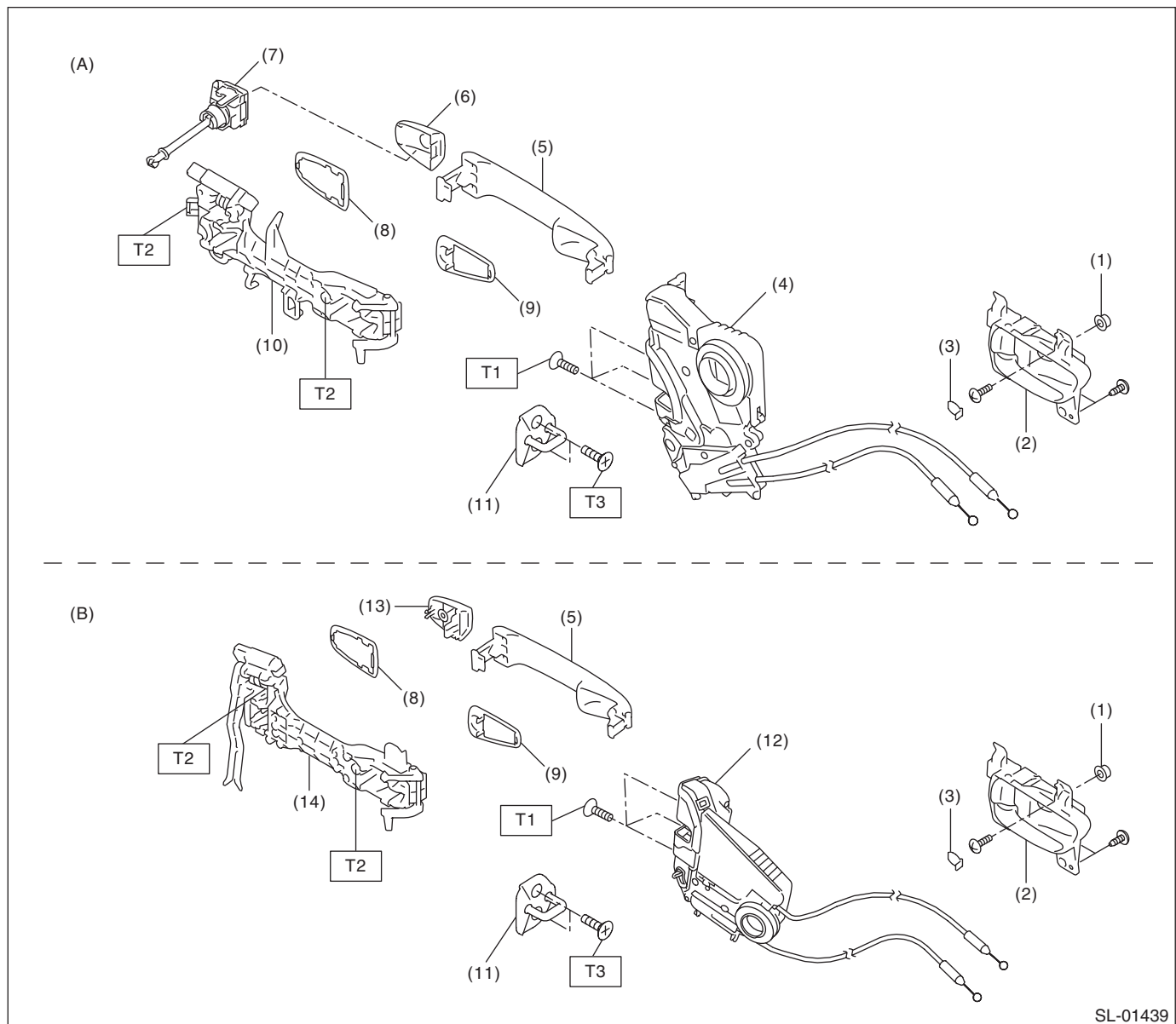
General Description

SECURITY AND LOCKS

1. General Description

A: COMPONENT

1. DOOR LOCK ASSEMBLY



SL-01439

(A) Front

(B) Rear

- | | |
|--|------------------------------------|
| (1) Grommet - screw | (8) Spacer - door handle outer B |
| (2) Remote ASSY - door | (9) Spacer - door handle outer A |
| (3) Cap remote | (10) Frame ASSY - front door outer |
| (4) Latch & actuator ASSY - front | (11) Striker - door |
| (5) Handle - door outer | (12) Latch & actuator ASSY - rear |
| (6) Cover - handle front outer | (13) Cover - handle rear outer |
| (7) Key lock - door (driver's seat only) | (14) Frame ASSY - rear door outer |

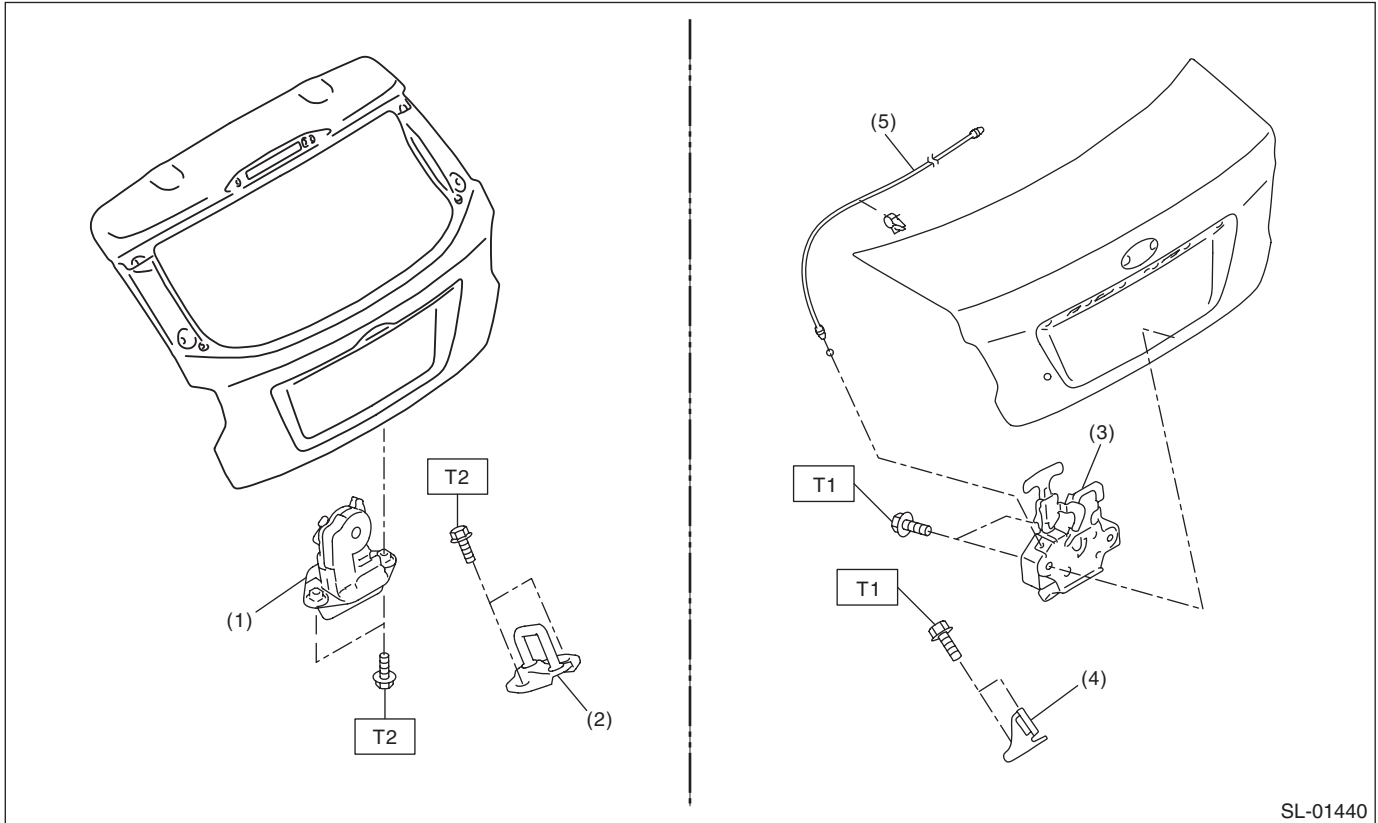
Tightening torque: N-m (kgf-m, ft-lb)

T1: 6.5 (0.66, 4.8)

T2: 7.5 (0.76, 5.5)

T3: 18 (1.84, 13.3)

2. REAR GATE LOCK AND TRUNK LID LOCK



- | | |
|----------------------------------|----------------------------|
| (1) Latch & actuator - rear gate | (4) Striker - trunk lid |
| (2) Striker - rear gate | (5) Cable ASSY - trunk lid |
| (3) Lock ASSY - trunk lid | |

Tightening torque: N·m (kgf·m, ft·lb)

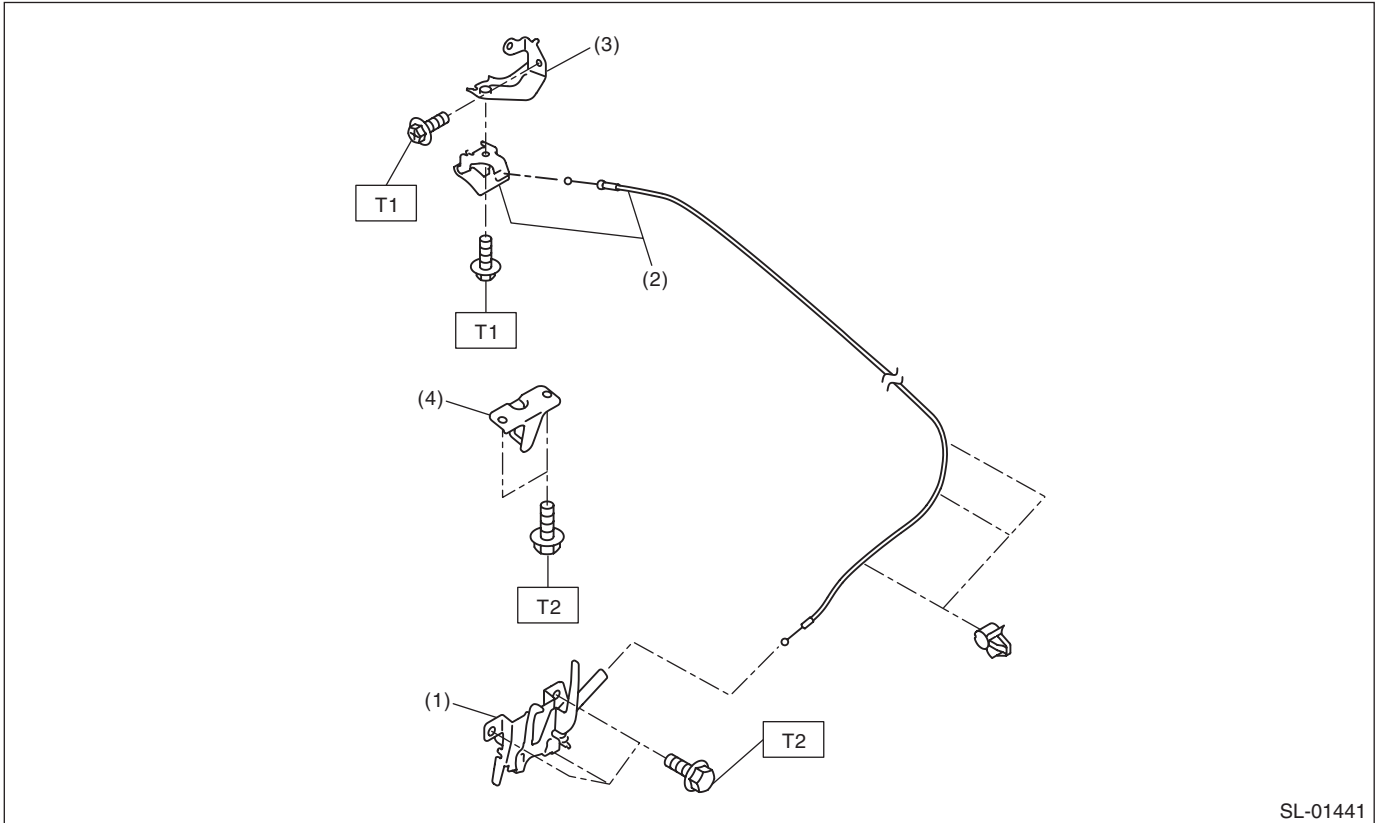
T1: 7.5 (0.76, 5.5)

T2: 25 (2.55, 18.4)

General Description

SECURITY AND LOCKS

3. FRONT HOOD LOCK



SL-01441

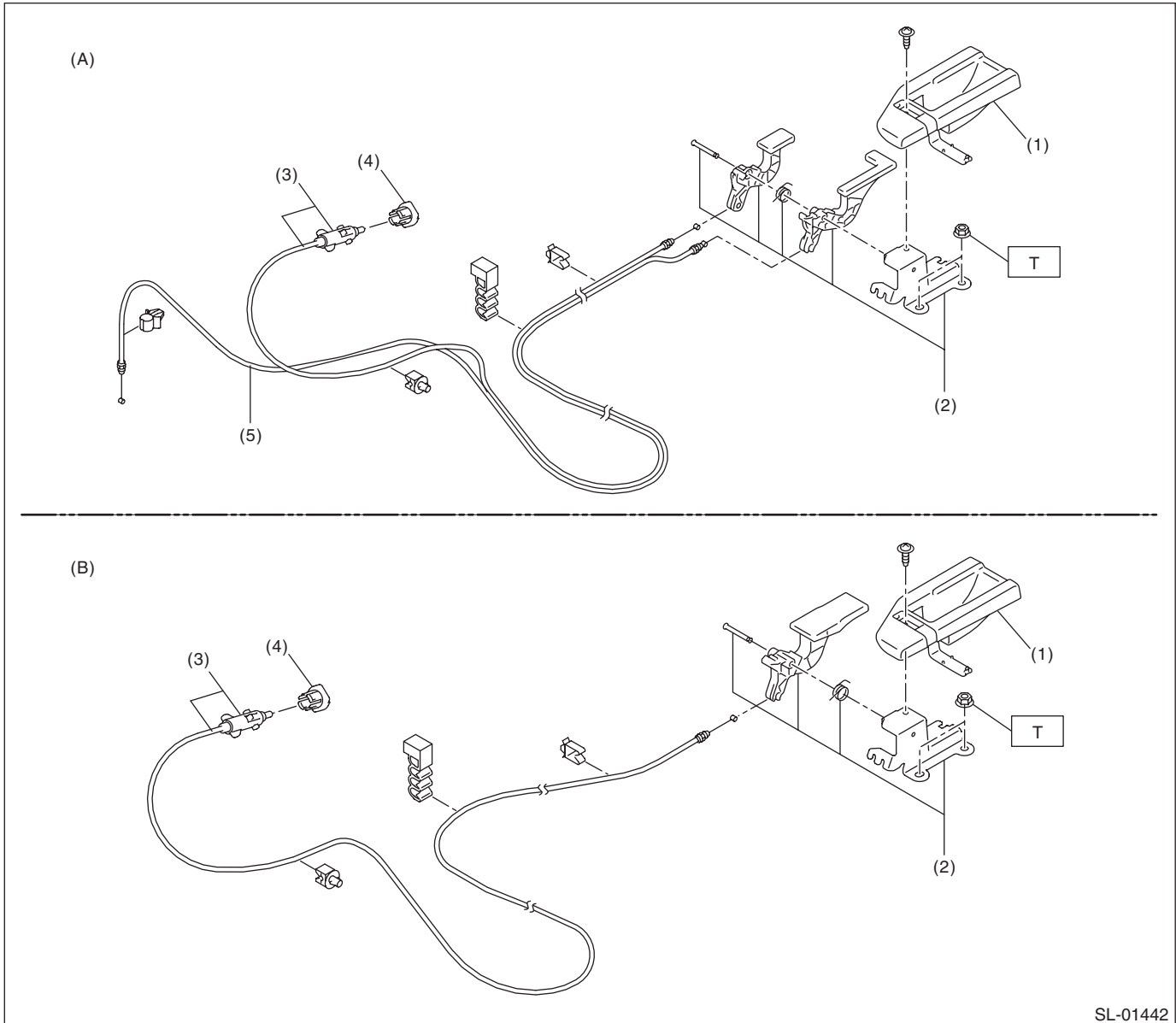
- | | |
|----------------------------|-----------------------------|
| (1) Lock ASSY - front hood | (3) Bracket - opener handle |
| (2) Cable - front hood | (4) Striker - front hood |

Tightening torque: N·m (kgf·m, ft·lb)

T1: 7.5 (0.76, 5.5)

T2: 33 (3.36, 24.3)

4. REMOTE OPENER



SL-01442

(A) 4 door model

(B) 5 door model/XV model

- (1) Cover - handle
- (2) Pull handle - opener
- (3) Cable ASSY - fuel

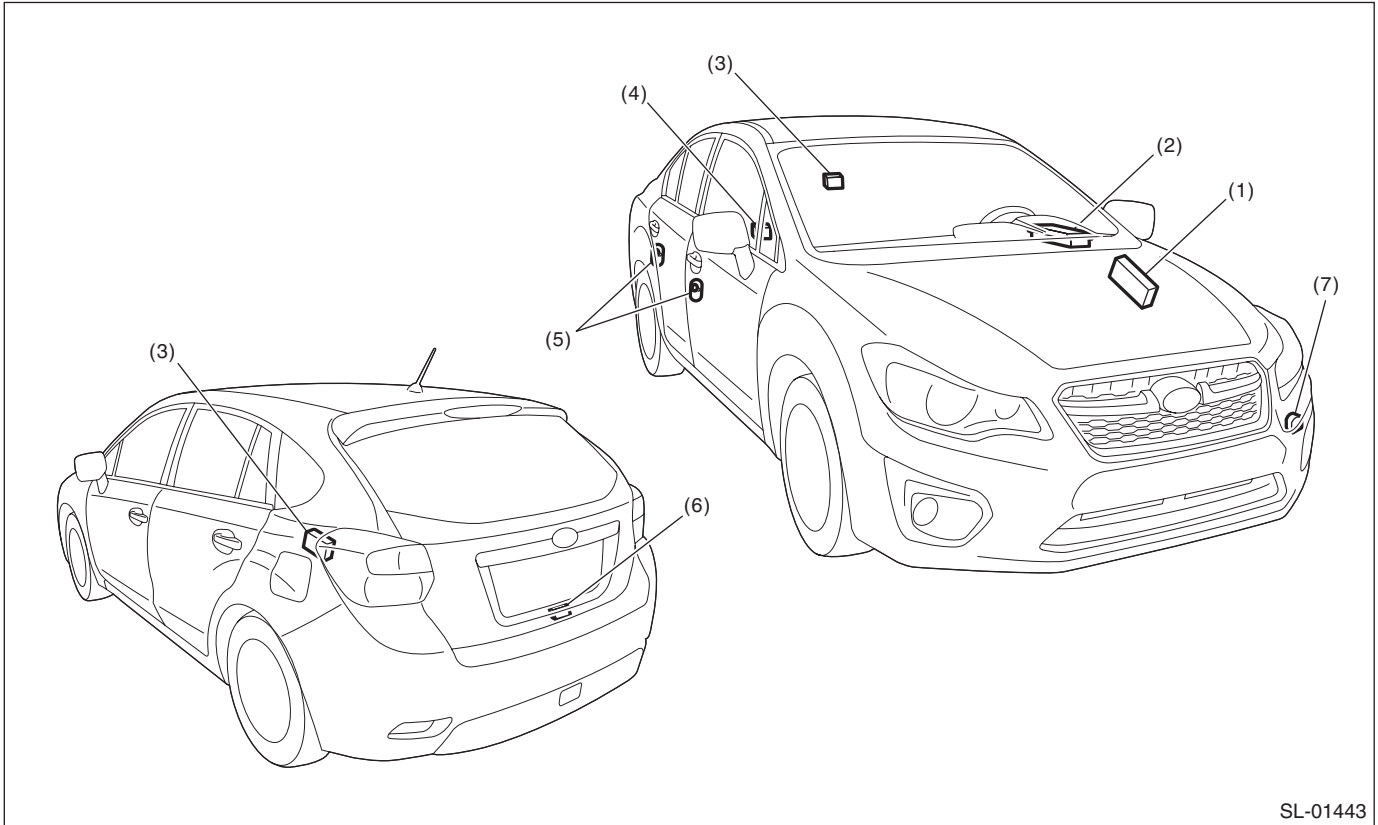
- (4) Holder
- (5) Cable ASSY - trunk lid

Tightening torque: N-m (kgf-m, ft-lb)
T: 7.5 (0.76, 5.5)

General Description

SECURITY AND LOCKS

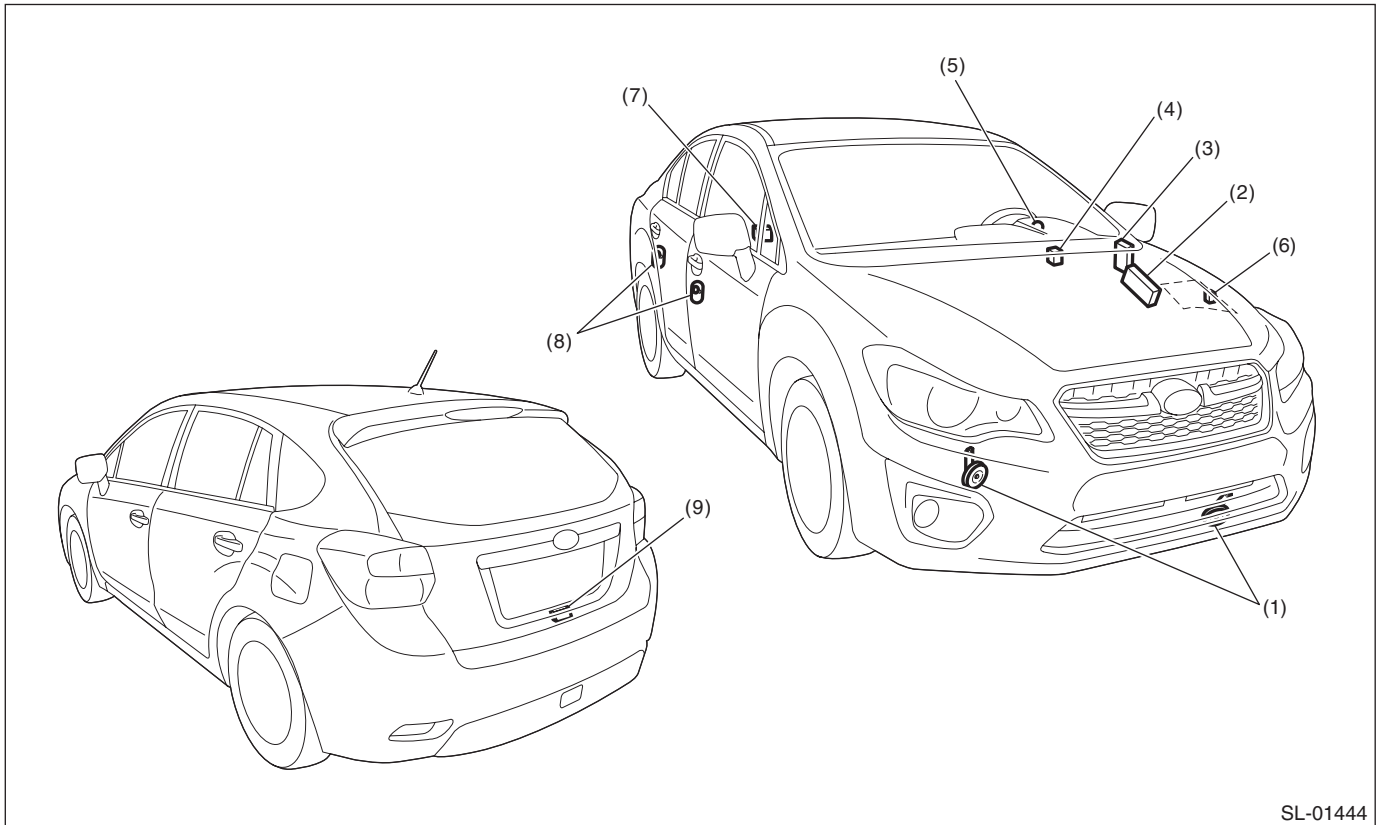
5. KEYLESS ENTRY SYSTEM



SL-01443

- | | | |
|----------------------------------|---|--|
| (1) Body integrated unit | (4) Trunk lid latch switch (4 door model) | (6) Rear gate latch switch (5 door model/XV model) |
| (2) Power window main switch | (5) Door switch | (7) Keyless buzzer |
| (3) Keyless entry control module | | |

6. SECURITY SYSTEM



SL-01444

- | | | |
|---|---|--|
| (1) Horn | (4) Turn signal and hazard module | (7) Trunk lid latch switch (4 door model) |
| (2) Body integrated unit | (5) Security indicator light (in combination meter) | (8) Door switch |
| (3) Impact sensor (driver's seat instrument panel side) (dealer option) | (6) Horn relay (in main fuse box) | (9) Rear gate latch switch (5 door model/XV model) |

General Description

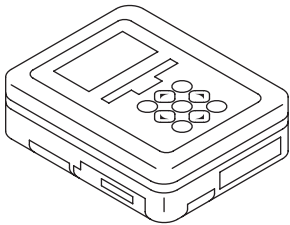
SECURITY AND LOCKS

B: CAUTION

- Before disassembling or reassembling parts, always disconnect the battery ground cable from battery. When replacing the audio, control module and other parts provided with memory functions, record the memory contents before disconnecting the battery ground cable. Otherwise, the memory is cleared.
- Reassemble the parts in the reverse order of disassembly procedure unless otherwise indicated.
- Connect the connectors securely during reassembly.
- After reassembly, make sure that the each component operates normally.
- If any immobilizer related part has been replaced, make sure to register the immobilizer.
- Do not use any electrical test equipment on the airbag system wiring harnesses and connector circuits.
- Be careful not to damage the airbag system wiring harness when servicing the ignition key cylinder.
- If the steering wheel and steering angle sensor (steering roll connector) are removed, perform “VDC sensor midpoint setting mode” of the VDC. <Ref. to VDC-19, VDC SENSOR MIDPOINT SETTING MODE, ADJUSTMENT, VDC Control Module and Hydraulic Control Unit (VDCCM&H/U).>

C: PREPARATION TOOL

1. SPECIAL TOOL

ILLUSTRATION	TOOL NUMBER	DESCRIPTION	REMARKS
 ST1B022XU0	1B022XU0	SUBARU SELECT MONITOR III KIT	Used for troubleshooting the electrical system. NOTE: For detailed operation procedures of SUBARU SELECT MONITOR III KIT, refer to “PC application help for Subaru Select Monitor”.

2. GENERAL TOOL

TOOL NAME	REMARKS
Circuit tester	Used for measuring resistance and voltage.
Drill	Used for replacing ignition key lock.
Reverse tap	Used for replacing ignition key lock.
TORX® T30	Used for removing and installing door outer handle cover and frame assembly.
Clip remover	Used for removing trim clip.