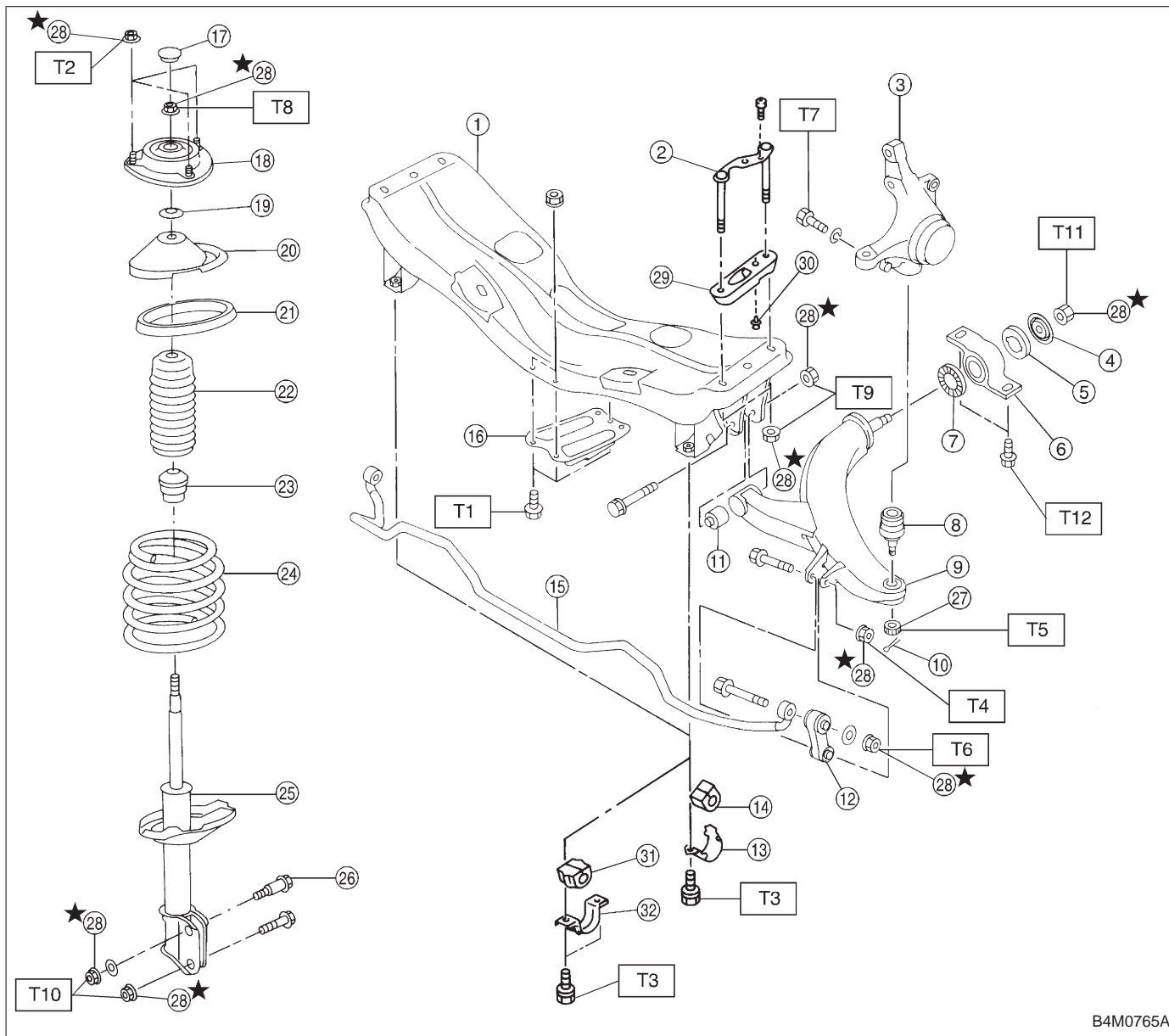


1. Conventional Suspension

1. FRONT SUSPENSION



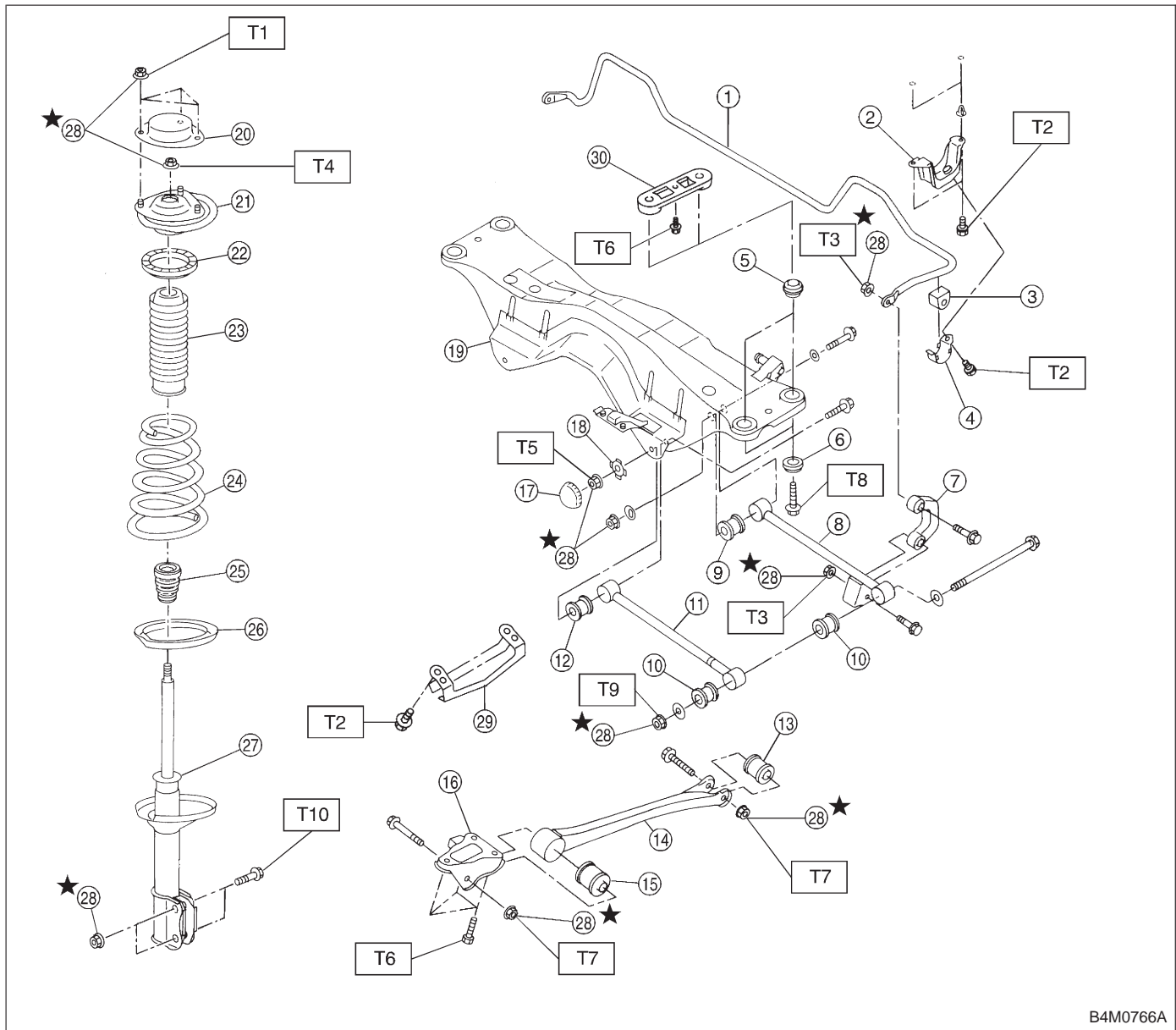
B4M0765A

- ① Front crossmember
- ② Bolt ASSY
- ③ Housing
- ④ Washer
- ⑤ Stop rubber (Rear)
- ⑥ Rear bushing
- ⑦ Stop rubber (Front)
- ⑧ Ball joint
- ⑨ Transverse link
- ⑩ Cotter pin
- ⑪ Front bushing
- ⑫ Stabilizer link
- ⑬ Clamp
- ⑭ Bushing (2200 cc model)
- ⑮ Stabilizer (2200 cc model)
- ⑯ Jack-up plate
- ⑰ Dust seal
- ⑱ Strut mount
- ⑲ Spacer
- ⑳ Upper spring seat
- ㉑ Rubber seat
- ㉒ Dust cover
- ㉓ Helper
- ㉔ Coil spring
- ㉕ Damper strut
- ㉖ Adjusting bolt
- ㉗ Castle nut
- ㉘ Self-locking nut
- ㉙ Adapter front crossmember (OUTBACK model)
- ㉚ Clip (OUTBACK model)
- ㉛ Bushing (2500 cc and OUTBACK model)
- ㉜ Clamp (2500 cc and OUTBACK model)

Tightening torque: N·m (kg·m, ft·lb)

- T1: 18±5 (1.8±0.5, 13.0±3.6)
- T2: 20±6 (2.0±0.6, 14.5±4.3)
- T3: 25±4 (2.5±0.4, 18.1±2.9)
- T4: 29±5 (3.0±0.5, 21.7±3.6)
- T5: 39 (4, 29)
- T6: 44±6 (4.5±0.6, 32.5±4.3)
- T7: 49±10 (5.0±1.0, 36±7)
- T8: 54±5 (5.5±0.5, 39.8±3.6)
- T9: 98±15 (10.0±1.5, 72±11)
- T10: 152±20 (15.5±2.0, 112±14)
- T11: 186±10 (19.0±1.0, 137±7)
- T12: 245±49 (25.0±5.0, 181±36)

2. REAR SUSPENSION (AWD MODEL)



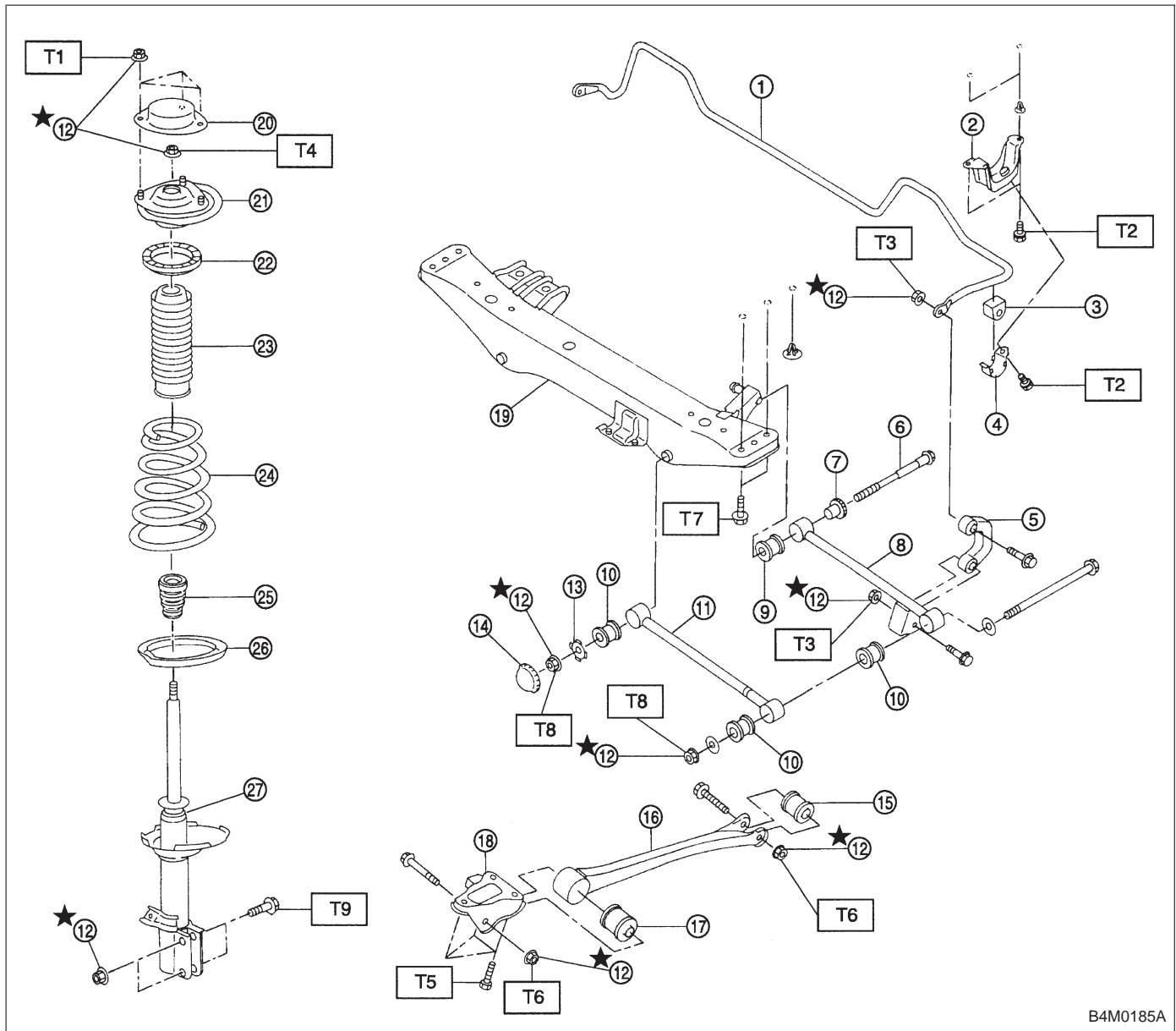
B4M0766A

- | | |
|---|---|
| ① Stabilizer | ⑬ Trailing link rear bushing |
| ② Stabilizer bracket | ⑭ Trailing link |
| ③ Stabilizer bushing | ⑮ Trailing link front bushing |
| ④ Clamp | ⑯ Trailing link bracket |
| ⑤ Floating bushing | ⑰ Cap (Protection) |
| ⑥ Stopper | ⑱ Washer |
| ⑦ Stabilizer link | ⑲ Rear crossmember |
| ⑧ Rear lateral link | ⑳ Strut mount cap |
| ⑨ Bushing (C) | ㉑ Strut mount |
| ⑩ Bushing (A) | ㉒ Rubber seat upper |
| ⑪ Front lateral link | ㉓ Dust cover |
| ⑫ Bushing (B) | ㉔ Coil spring |
| ⑬ Trailing link rear bushing | ㉕ Helper |
| ⑭ Trailing link | ㉖ Rubber seat lower |
| ⑮ Trailing link front bushing | ㉗ Damper strut |
| ⑯ Trailing link bracket | ㉘ Self-locking nut |
| ⑰ Cap (Protection) | ㉙ Crossmember reinforcement lower (Sedan model) |
| ⑱ Washer | ㉚ Adapter rear crossmember (OUTBACK model) |
| ⑲ Rear crossmember | |
| ⑳ Strut mount cap | |
| ㉑ Strut mount | |
| ㉒ Rubber seat upper | |
| ㉓ Dust cover | |
| ㉔ Coil spring | |
| ㉕ Helper | |
| ㉖ Rubber seat lower | |
| ㉗ Damper strut | |
| ㉘ Self-locking nut | |
| ㉙ Crossmember reinforcement lower (Sedan model) | |
| ㉚ Adapter rear crossmember (OUTBACK model) | |

Tightening torque: N·m (kg-m, ft-lb)

- | |
|---|
| T1: 20±6 (2.0±0.6, 14.5±4.3) |
| T2: 25±7 (2.5±0.7, 18.1±5.1) |
| T3: 44±6 (4.5±0.6, 32.5±4.3) |
| T4: 59±10 (6.0±1.0, 43±7) |
| T5: 98±15 (10.0±1.5, 72±11) |
| T6: 98±20 (10.0±2.0, 72±14) |
| T7: 113±15 (11.5±1.5, 83±11) |
| T8: 127±20 (13.0±2.0, 94±14) |
| T9: 137±20 (14.0±2.0, 101±14) |
| T10: 196 ⁺³⁹ ₋₁₀ (20.0 ^{+4.0} _{-1.0} , 145 ⁺²⁹ ₋₇) |

3. REAR SUSPENSION (FWD MODEL)



B4M0185A

- ① Stabilizer
- ② Stabilizer bracket
- ③ Stabilizer bushing
- ④ Clamp
- ⑤ Stabilizer link
- ⑥ Adjusting bolt
- ⑦ Adjusting wheel
- ⑧ Rear lateral link
- ⑨ Bushing (D)
- ⑩ Bushing (A)
- ⑪ Front lateral link
- ⑫ Self-locking nut
- ⑬ Washer
- ⑭ Cap (Protection)
- ⑮ Trailing link rear bushing
- ⑯ Trailing link
- ⑰ Trailing link front bushing
- ⑱ Trailing link bracket
- ⑲ Crossmember
- ⑳ Strut mount cap
- ㉑ Strut mount
- ㉒ Rubber seat upper
- ㉓ Dust cover
- ㉔ Coil spring
- ㉕ Helper
- ㉖ Rubber seat lower
- ㉗ Damper strut

Tightening torque: N·m (kg·m, ft·lb)

- T1: 20±6 (2.0±0.6, 14.5±4.3)
- T2: 25±7 (2.5±0.7, 18.1±5.1)
- T3: 44±6 (4.5±0.6, 32.5±4.3)
- T4: 59±10 (6.0±1.0, 43±7)
- T5: 98±20 (10.0±2.0, 72±14)
- T6: 113±15 (11.5±1.5, 83±11)
- T7: 127±20 (13.0±2.0, 94±14)
- T8: 137±20 (14.0±2.0, 101±14)
- T9: 196⁺³⁹₋₁₀ (20.0^{+4.0}_{-1.0}, 145⁺²⁹₋₇)