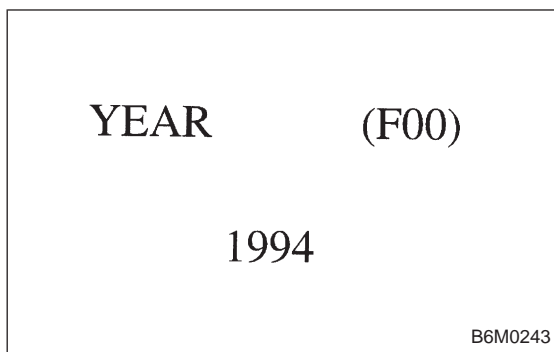


**9. Diagnostics Chart with Select Monitor**

**A: FUNCTION MODE**

Applicable cartridge of select monitor: No. 498349601

Function mode	Contents	Abbreviation	Unit of measure	Page
F00	ROM ID number	YEAR	—	33
F01	Vehicle speed signal	VSP	MPH	33
F02	Vehicle speed signal	VSP	km/h	33
F03	Memorized cruise set speed	MSP	MPH	34
F04	Memorized cruise set speed	MSP	km/h	34
FA0	ON ↔ OFF signal	—	—	35



**B: MODE F00**  
**— ROM ID NUMBER (YEAR) —**

**CONDITION:**  
 Ignition switch "ON"

**SPECIFIED DATA:**  
 Presentation display

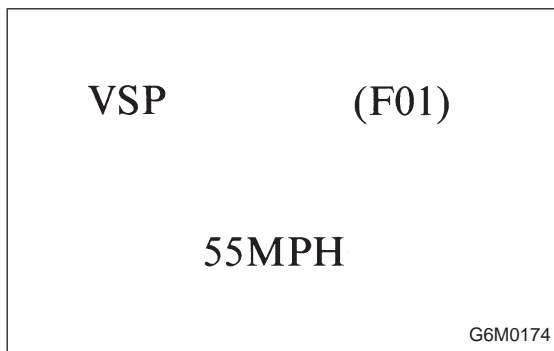
- Probable cause (Item outside "specified data")

1. Error 1

Check for loose or disconnected connector, and discontinued circuit, etc.

2. Error 2

Check for poor contact of cartridge, or different type cartridge.



**C: MODE F01 AND F02**  
**— VEHICLE SPEED SIGNAL (VSP) —**

**CONDITION:**  
 Driving at constant speed.

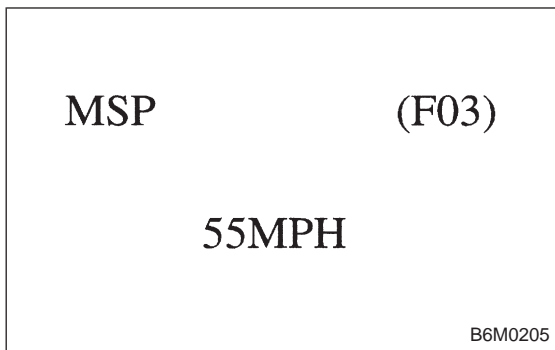
**SPECIFIED DATA:**  
 Compare speedometer with monitor indications.

- F01: Vehicle speed is indicated in mile per hour (MPH).
- F02: Vehicle speed is indicated in kilometer per hour (km/h).

- Probable cause (Item outside "specified data")

1. Vehicle speed sensor 2

Check vehicle speed sensor line.  
 <Ref. to 6-2 [T8D0].>



**D: MODE F03 AND F04**  
**— MEMORIZED CRUISE SET SPEED (MSP) —**

**CONDITION:**

Driving at minimum of 40 km/h (25 MPH) and set cruise control.

**SPECIFIED DATA:**

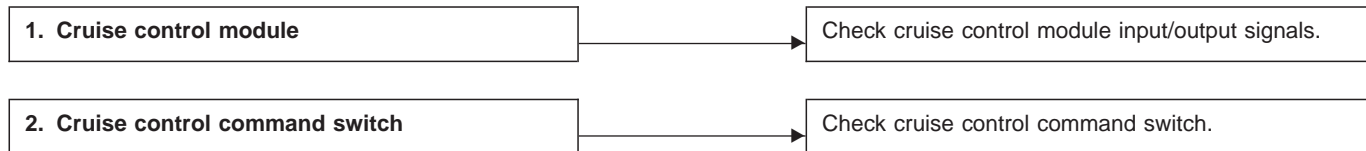
Compare displayed vehicle speed on select monitor in mode "F03" and "F04" with the speed in mode "F01" and "F02".

- F03: Memorized cruise set speed is indicated in mile per hour (MPH).
- F04: Memorized cruise set speed is indicated in kilometer per hour (km/h).

**NOTE:**

- F01: Actual vehicle speed is indicated in mile per hour (MPH).
- F02: Actual vehicle speed is indicated in kilometer per hour (km/h).

- Probable cause (Item outside "specified data")



LED No.	Signal name	Display
1	SET/COAST switch	SE
2	RESUME/ACCEL switch	RE
3	Stop light switch	ST
4	<ul style="list-style-type: none"> <li>● Brake switch</li> <li>● Clutch switch (MT)</li> </ul>	BR
5	Inhibitor switch (AT)	N
6	—	—
7	—	—
8	—	—
9	—	—
10	—	—

**E: MODE FA0**

— ON ↔ OFF SIGNAL —

Requirement for LED “ON”.

LED No. 1 SET/COAST switch is turned to ON.

LED No. 2 RESUME/ACCEL switch is turned to ON.

LED No. 3 Stop light switch is turned to ON.  
(Brake pedal is depressed.)

LED No. 4 ● Brake switch is turned to ON.  
● Clutch switch is turned to ON. (MT model)  
(Clutch pedal is depressed.)

LED No. 5 Select lever is set to “P” or “N” position. (AT model)

SE	RE	ST	BR	N
—	—	—	—	—

1	2	3	4	5
6	7	8	9	10