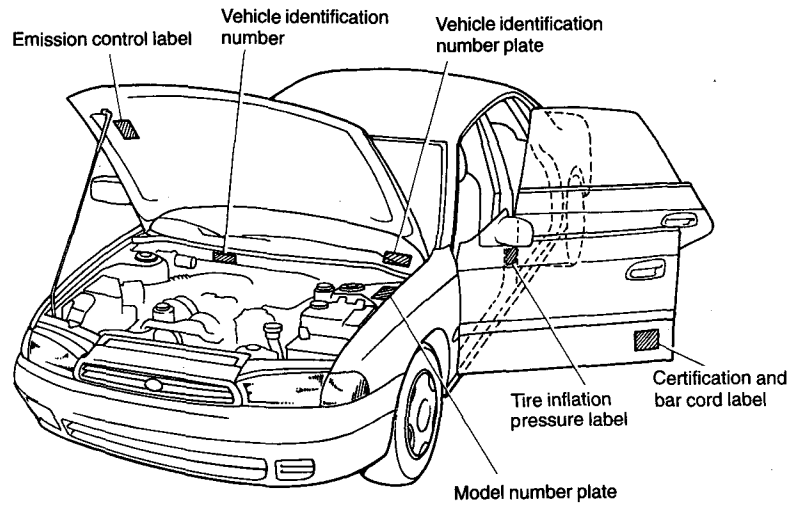


## Vehicle identification



HB0087



## **Consumer information and Reporting safety defects**

---

<b>Uniform tire quality grading standards .....</b>	<b>12-2</b>
<b>Treadwear .....</b>	<b>12-2</b>
<b>Traction A, B, C .....</b>	<b>12-2</b>
<b>Temperature A, B, C .....</b>	<b>12-3</b>
<b>Reporting safety defects (USA) .....</b>	<b>12-4</b>

---

**For U.S.A.**

The following information has been compiled according to Code of Federal Regulations "Title 49, Part 575".

**Uniform tire quality grading standards**

---

This information indicates the relative performance of passenger car tires in the area of treadwear, traction, and temperature resistance. This is to aid the consumer in making an informed choice in the purchase of tires. These grades are molded in the sidewall of the tire and can be interpreted by referring to the following information:

**■ Treadwear**

The treadwear grade is a comparative rating based on the wear rate of the tire when tested under controlled conditions on a specified government test course.

For example, a tire graded 150 would wear one and one-half (1-1/2) times as well on the government course as a tire graded 100. The relative performance of tires depends upon the actual conditions of their use, however, and may depart significantly from the norm due to variations in driving habits, service practices and differences in road characteristics and climate.

**■ Traction A, B, C**

The traction grades, from highest to lowest, are A, B and C, and they represent a tire's ability to stop on wet pavement as measured under controlled conditions on specified government test surfaces of asphalt and concrete. A tire marked C may have poor traction performance.

** WARNING**

**The traction grade assigned to a tire is based on braking (straight-ahead) traction tests and does not include cornering (turning) traction.**

■ **Temperature A, B, C**

The temperature grades are A (highest), B and C, representing the tire's resistance to generation of heat and its ability to dissipate heat when tested under controlled conditions on a specified indoor laboratory test wheel. Sustained high temperature can cause the material of the tire to degenerate and reduce tire life, and excessive temperature can lead to sudden tire failure. Grade C corresponds to a level of performance which all passenger car tires must meet under the Federal Motor Vehicle Safety Standards No. 109. Grades B and A represent higher levels of performance on the laboratory test wheel than the minimum required by law.

 **WARNING**

**The temperature grade for a tire is established for one that is properly inflated and not overloaded. Excessive speed, under inflation or excessive loading, either separately or in combination, can cause heat buildup and possible tire failure.**

---

## **Reporting safety defects (USA)**

---

If you believe that your vehicle has a defect which could cause a crash or could cause injury or death, you should immediately inform the National Highway Traffic Safety Administration (NHTSA) in addition to notifying Subaru of America, Inc.

If NHTSA receives similar complaints, it may open an investigation, and if it finds that a safety defect exists in a group of vehicles, it may order a recall and remedy campaign. However, NHTSA cannot become involved in individual problems between you, your dealer, or Subaru of America, Inc. To contact NHTSA, you may either call the Auto Safety Hotline toll-free at 1-800-424-9393 (or 366-0123 in the Washington D.C. area) or write to: NHTSA, U.S. Department of Transportation, Washington, D.C. 20590. You can also obtain other information about motor vehicle safety from the Hotline.

## ***Index***

---

<b>A</b>	
ABS (Anti-Lock Brake system) .....	7-34
ABS warning light .....	3-9
Accessory socket .....	6-6
Front accessory socket .....	6-7
Rear accessory socket .....	6-7
AIRBAG .....	2-28
Safety guidelines for the SRS AIRBAG .....	2-33
System monitors .....	2-32
System servicing .....	2-33
Vehicle with driver's side and passenger's side airbags and lap/shoulder restraints .....	2-28
AIRBAG warning light .....	3-7
Air conditioner .....	4-3
Air conditioner (for right hand drive vehicles only) .....	4-16
Air cleaner element .....	10-17
Replacing the air cleaner element .....	10-17
All wheel drive vehicles .....	7-22
Aluminum wheels (If equipped) (Maintenance) .....	10-43
Aluminum wheels (If equipped) (Cleaning) .....	9-7
AM/FM stereo radio with cassette player (if equipped) .....	5-3
RADIO OPERATION (for radio with weather band) .....	5-3
Automatic tuning (SCAN) .....	5-7
Band selection switch (BAND) .....	5-6
Bass and treble control (BASS and TREB) .....	5-5
Fader and balance control (FADER and BAL) .....	5-5
How to preset stations .....	5-7
Manual tuning (TUNE) .....	5-6
Power switch and volume control (ON/VOL) .....	5-4
Selecting preset stations .....	5-7
Stereo indicator .....	5-6
Weather band (WB) .....	5-4
RADIO OPERATION (for radio without weather band) .....	5-8
Automatic tuning (SCAN) .....	5-10
Bass and treble control (BASS and TREB) .....	5-9
Fader and balance control (FADER and BAL) .....	5-8

FM/AM selection switch (FM·AM) .....	5-10
How to preset stations .....	5-11
Manual tuning (TUNE) .....	5-10
Power switch and volume control (ON/VOL) .....	5-8
Selecting preset stations .....	5-11
Stereo indicator .....	5-10
CASSETTE PLAYER OPERATION .....	5-12
Auto metal sensor .....	5-14
Cassette slot .....	5-12
Dolby NR button (NR) .....	5-14
Fast-forward button (FF) .....	5-13
Metal tape indicator (if equipped) .....	5-14
Program switching button (PROG) .....	5-13
Repeat button (RPT) .....	5-14
Rewind button (REW) .....	5-13
Stop and eject button (STOP/EJ) .....	5-13
Tape program sensor button (TPS) .....	5-13
Tape travel indicators .....	5-12
CLOCK FUNCTION .....	5-14
Setting the time .....	5-15
When turning on the radio .....	5-15
Antenna .....	5-2
Anti-lock brake system .....	7-34
Anti-theft system .....	1-8
Ashtray (If equipped) .....	6-9
Front ashtray .....	6-9
Rear ashtray .....	6-9
AT OIL TEMPerature warning light .....	3-11
Automatic transmission .....	7-17
Driving tips .....	7-20
Maximum speeds .....	7-20
Selector lever .....	7-18
Shift lock release .....	7-20
Automatic transmission fluid .....	10-22
Checking the fluid level .....	10-22, 10-23
Recommended fluid .....	10-23



---

<b>B</b>	
Back-up light (Bulb replacement) .....	10-56
Battery .....	10-31
Brake .....	7-32
Brake booster .....	10-30
Checking brake booster operation .....	10-30
Brake fluid .....	10-28
Checking the fluid level .....	10-28
Recommended brake fluid .....	10-29
Brake system warning light .....	3-8
Brake pedal (maintenance) .....	10-36
Checking the brake pedal free play .....	10-36
Checking the brake pedal reserve distance .....	10-36
Brake pad and lining .....	10-38
Brake system line and connections .....	10-31
Break-in (New vehicle) .....	7-3
Bulb chart .....	11-10
Bulb replacement .....	10-51

<b>C</b>	
Carbon monoxide .....	7-7
Cargo anchorage eyelets .....	6-13
Cargo area cover .....	6-12
Cargo hooks .....	6-13
Cargo room light .....	6-11
Cassette player operation .....	5-12
Catalytic converter .....	7-59
Center console .....	6-4
Charge warning light .....	3-8
CHECK ENGINE warning light/Malfunction indicator lamp .....	3-9
Checking the headlight aim .....	10-48
To check the headlight aim .....	10-48
Child restraint system .....	2-20
Front seat installation .....	2-25
Rear seat installation .....	2-21
Top strap anchors .....	2-23