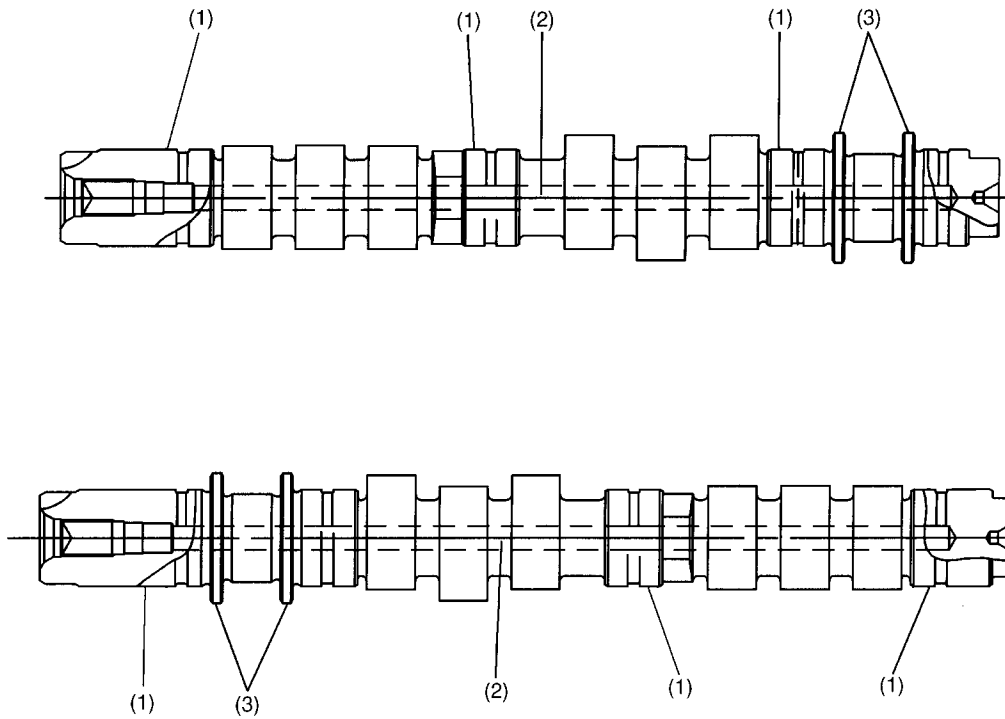


6. Camshaft

- The right-hand camshaft is supported inside the cylinder head at three journals while the left-hand camshaft is supported at four journals.
- The two flanges on each camshaft supports thrust forces to limit the end play of the camshaft within the tolerance.
- Each camshaft has an oil passage in it.



B2H1987A

- (1) Journal
- (2) Oil passage
- (3) Shaft flange