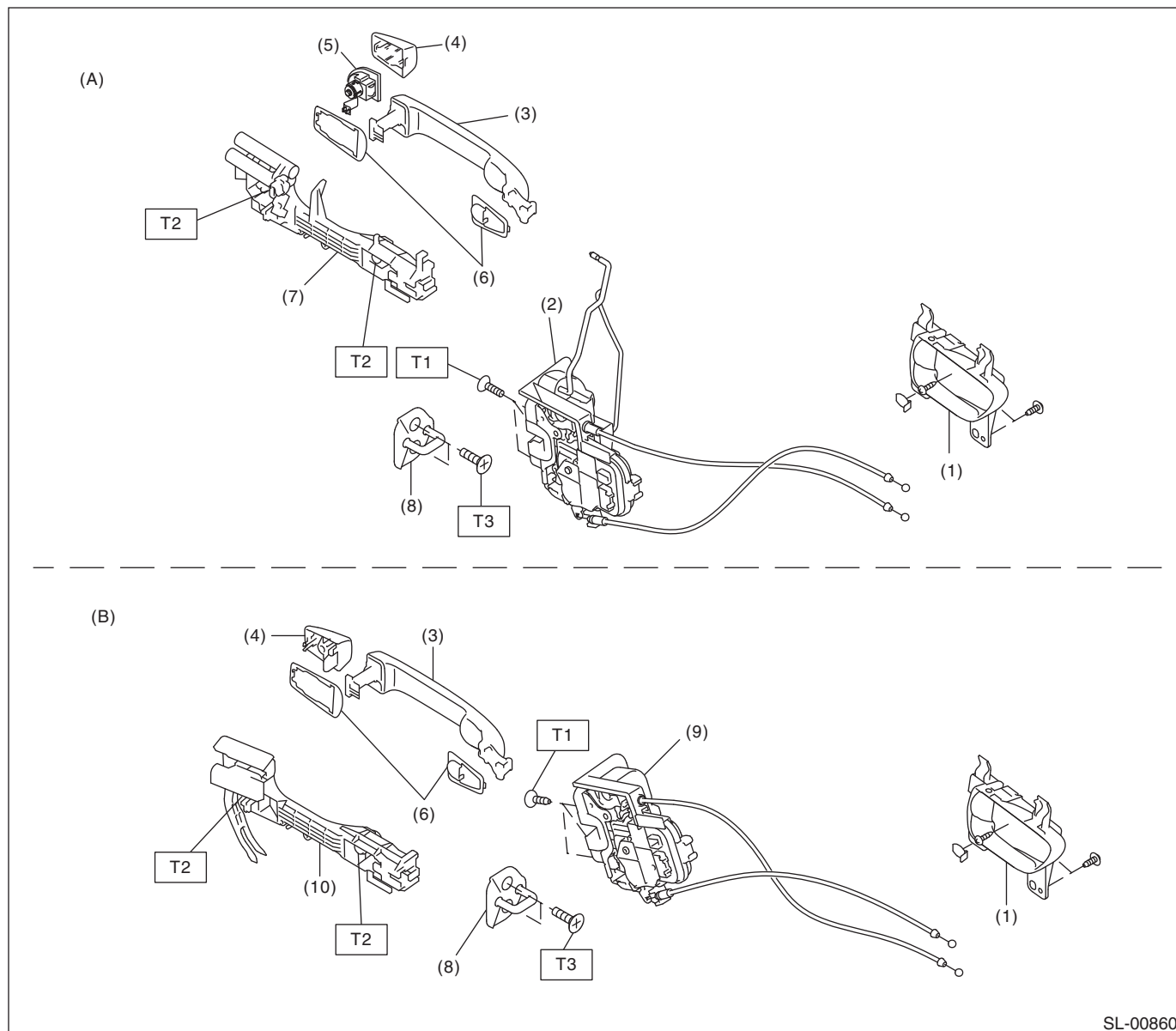


1. General Description

A: COMPONENT

1. DOOR LOCK ASSEMBLY



(A) Front

(B) Rear

- | | |
|--|---|
| (1) Inner remote ASSY | (6) Door outer handle spacer |
| (2) Front door latch and door lock actuator ASSY | (7) Front door outer handle frame ASSY |
| (3) Door outer handle | (8) Striker |
| (4) Door outer handle cover | (9) Rear door latch and door lock actuator ASSY |
| (5) Key cylinder (driver's seat side only) | (10) Rear door outer handle frame ASSY |

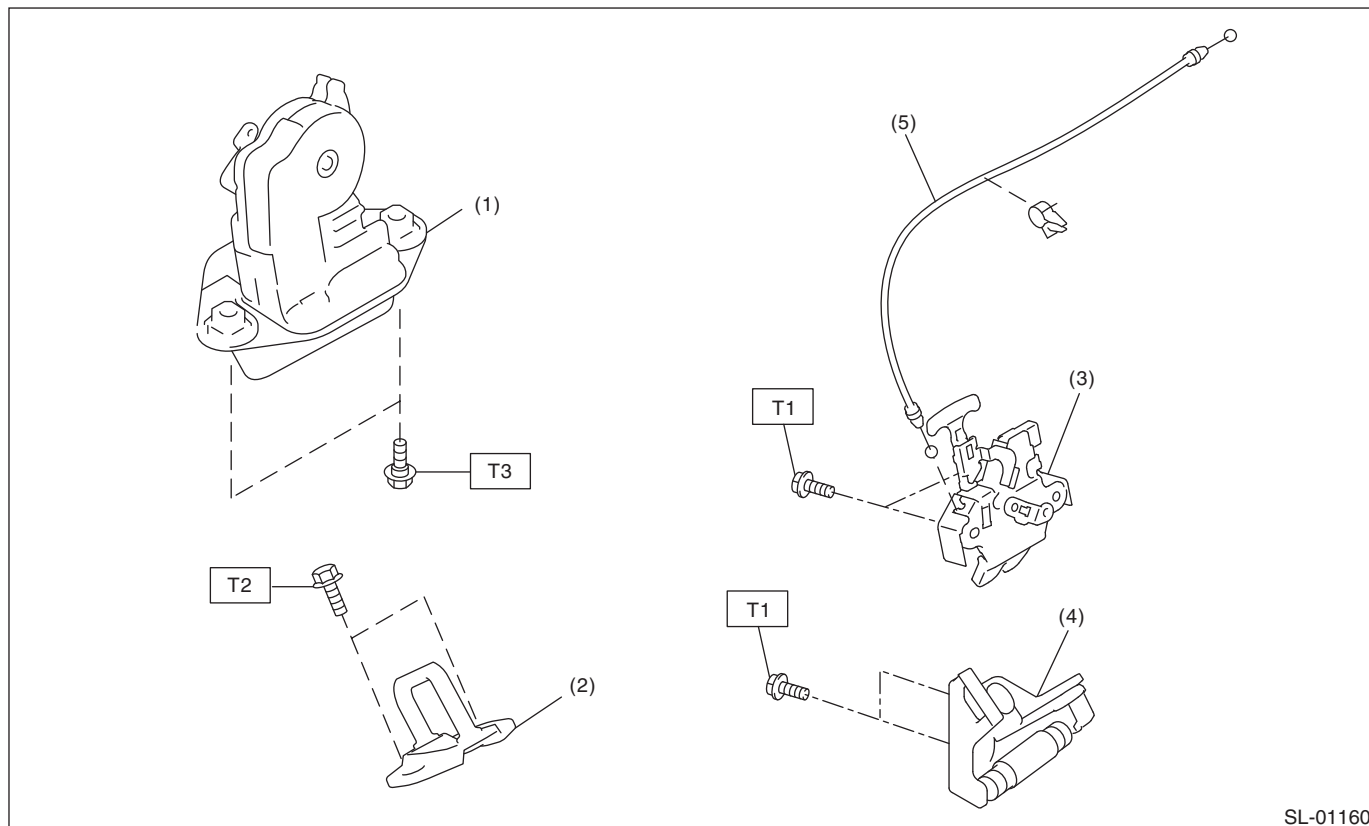
Tightening torque: N·m (kgf-m, ft-lb)

T1: 6.5 (0.66, 4.8)

T2: 7.5 (0.76, 5.5)

T3: 18 (1.8, 13.3)

2. REAR GATE LOCK AND TRUNK LID LOCK



- | | |
|-------------------------------------|-----------------------|
| (1) Rear gate latch & actuator ASSY | (4) Trunk lid striker |
| (2) Rear gate striker | (5) Cable |
| (3) Trunk lid latch & actuator ASSY | |

Tightening torque: N·m (kgf-m, ft-lb)

T1: 7.5 (0.76, 5.5)

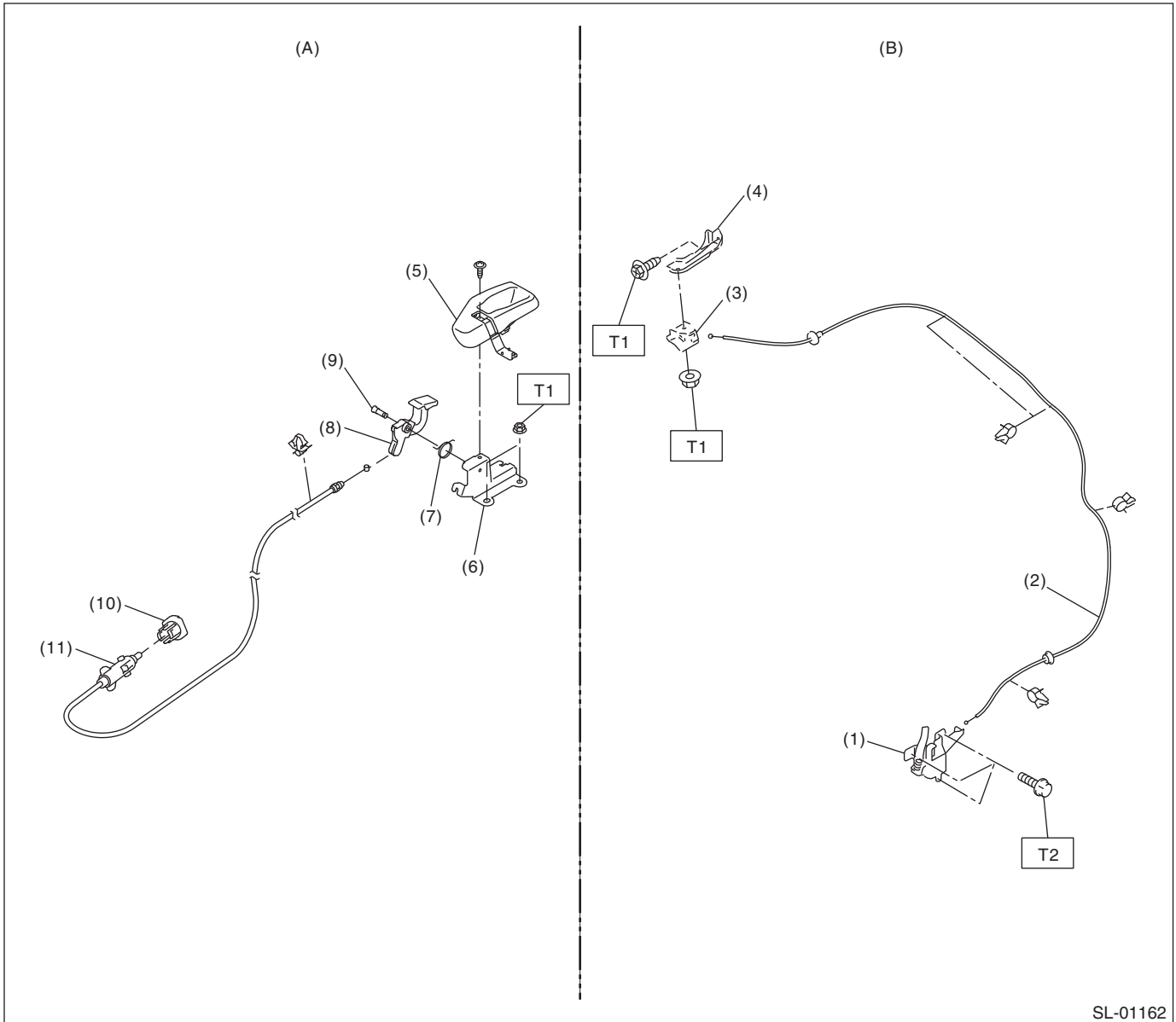
T2: 25 (2.5, 18.4)

T3: 18 (1.8, 13.3)

General Description

SECURITY AND LOCKS

3. FRONT HOOD LOCK AND REMOTE OPENERS



(A) Fuel lock release

(B) Hood lock release

- (1) Front hood lock ASSY
- (2) Cable
- (3) Lever ASSY
- (4) Bracket
- (5) Cover

- (6) Bracket
- (7) Spring
- (8) Pull handle ASSY
- (9) Pin
- (10) Holder

- (11) Fuel lock

Tightening torque: N·m (kgf-m, ft-lb)

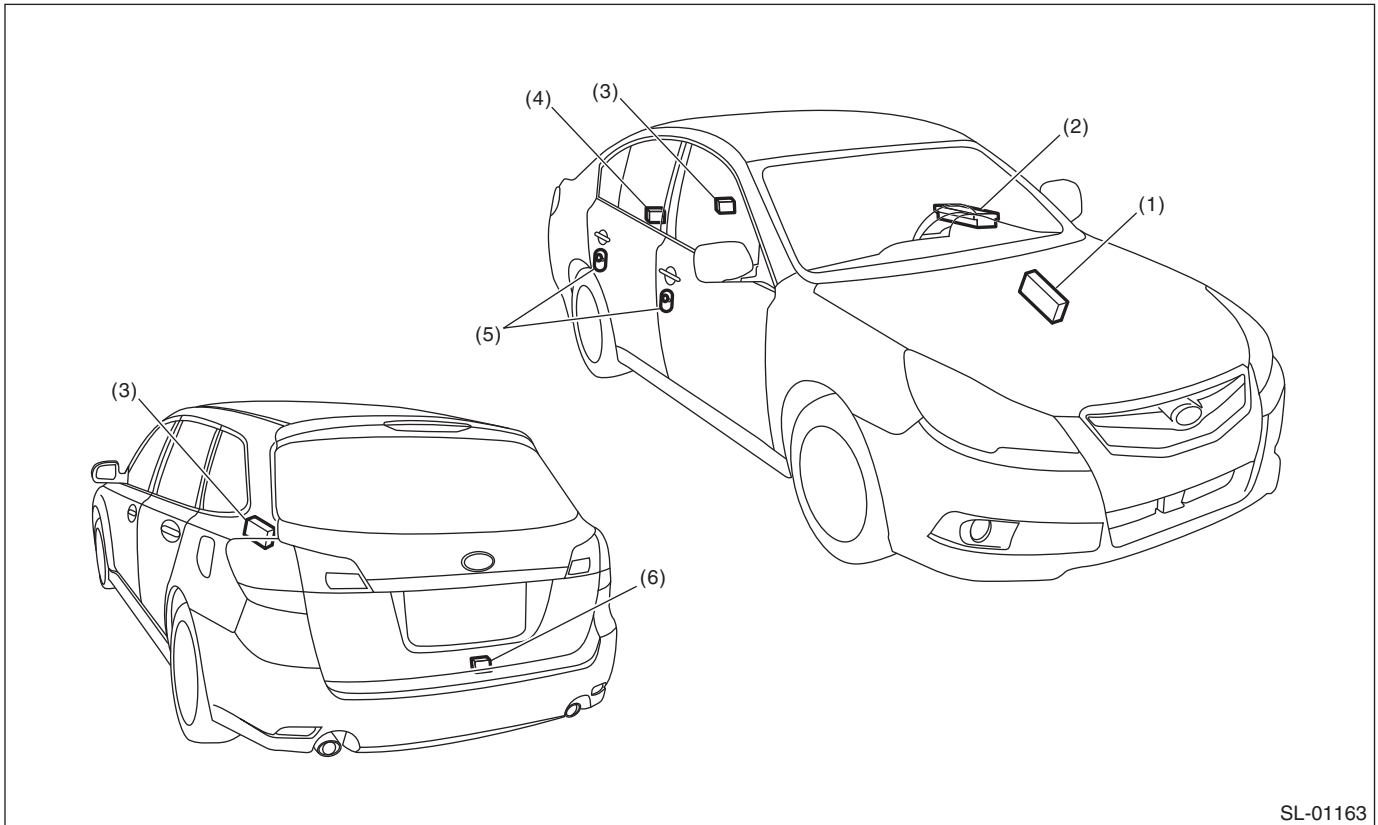
T1: 7.5 (0.76, 5.5)

T2: 33 (3.36, 24.3)

4. KEYLESS ENTRY SYSTEM

NOTE:

Except for model with keyless access



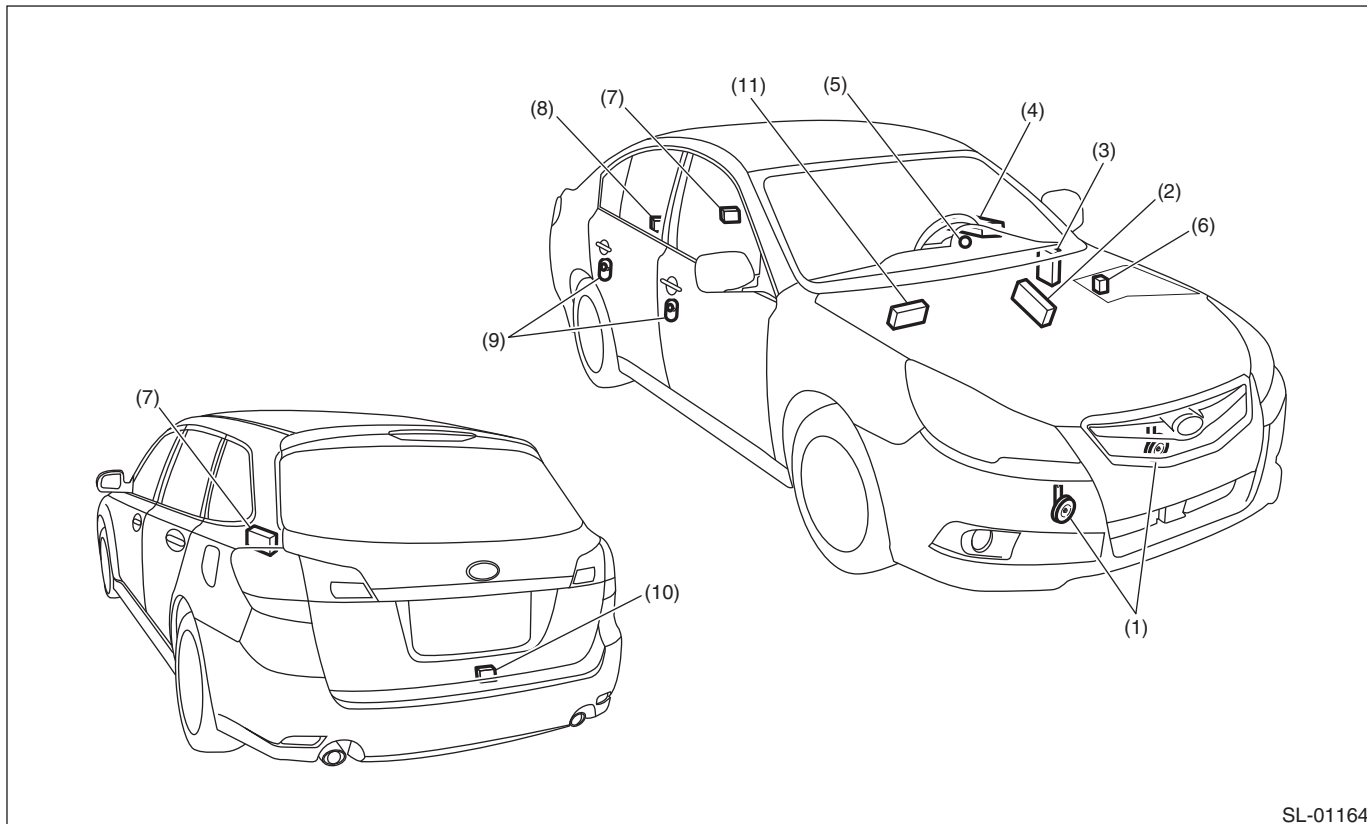
SL-01163

- | | | |
|------------------------------|--|--|
| (1) Body integrated unit | (3) Keyless entry control module | (5) Door switch |
| (2) Power window main switch | (4) Trunk lid latch switch (Sedan model) | (6) Rear gate latch switch (OUTBACK model) |

General Description

SECURITY AND LOCKS

5. SECURITY SYSTEM



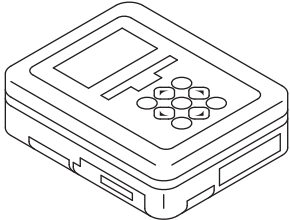
SL-01164

- | | | |
|--|---|---|
| (1) Horn | (5) Security indicator light (in combination meter) | (9) Door switch |
| (2) Body integrated unit | (6) Horn relay (in main fuse box) | (10) Rear gate latch switch (OUTBACK model) |
| (3) Impact sensor (Instrument panel side end on driver's side) (dealer option) | (7) Keyless entry control module | (11) Security control module (C0, C5 model) |
| (4) Power window main switch | (8) Trunk lid latch switch (Sedan model) | |

B: CAUTION

- Before disassembling or reassembling parts, always disconnect the battery ground cable from battery. When replacing the control module and other parts provided with memory functions, record the memory contents before disconnecting the battery ground cable. Otherwise, the memory is cleared.
- After disconnecting the battery or after restoring from a dead battery condition, turn the ignition to ON and OFF, and perform after opening and closing the driver's side door a few times.
- Reassemble the parts in the reverse order of disassembly procedure unless otherwise indicated.
- Connect the connectors securely when reassembling.
- After reassembly, make sure that all functional parts operate normally.
- If any immobilizer related part has been replaced, make sure to register the immobilizer.
- Do not use any electrical test equipment on the airbag system wiring harnesses and connector circuits.
- Be careful not to damage the airbag system wiring harness when servicing the ignition key cylinder.

C: PREPARATION TOOL**1. SPECIAL TOOL**

ILLUSTRATION	TOOL NUMBER	DESCRIPTION	REMARKS
 ST1B022XU0	1B022XU0	SUBARU SELECT MONITOR III KIT	Used for troubleshooting the electrical system.

2. GENERAL TOOL

TOOL NAME	REMARKS
Circuit tester	Used for measuring resistance and voltage.
Drill	Used for replacing the ignition key lock and steering lock CM.
TORX® T30	Used for removing and installing door outer handle.
Clip remover	Used for removing trim clip.