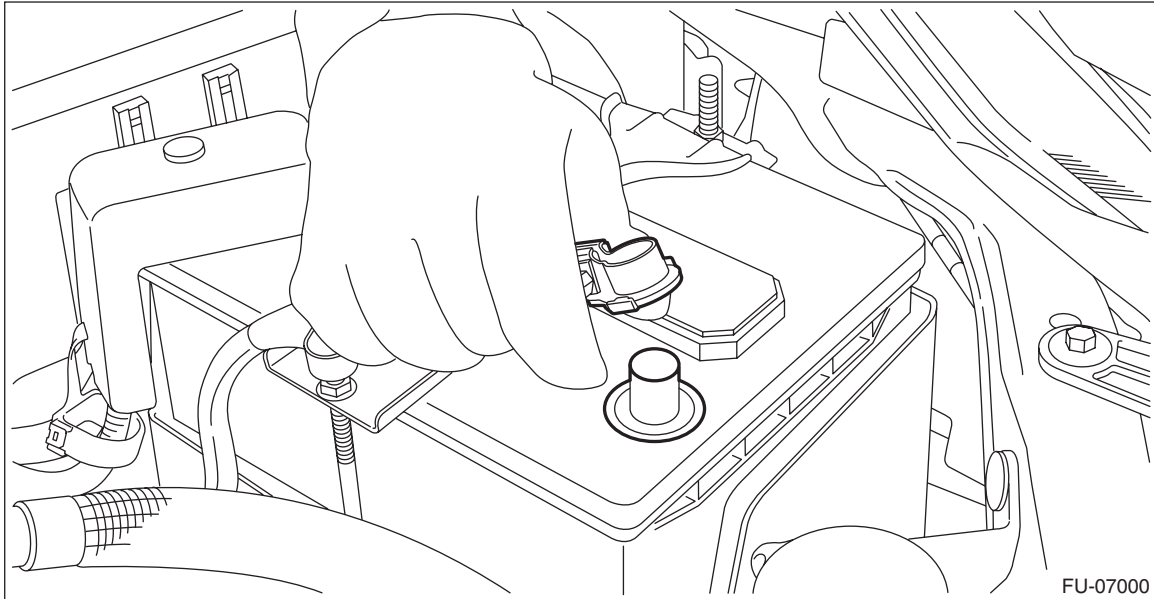


## 5. Thermostat

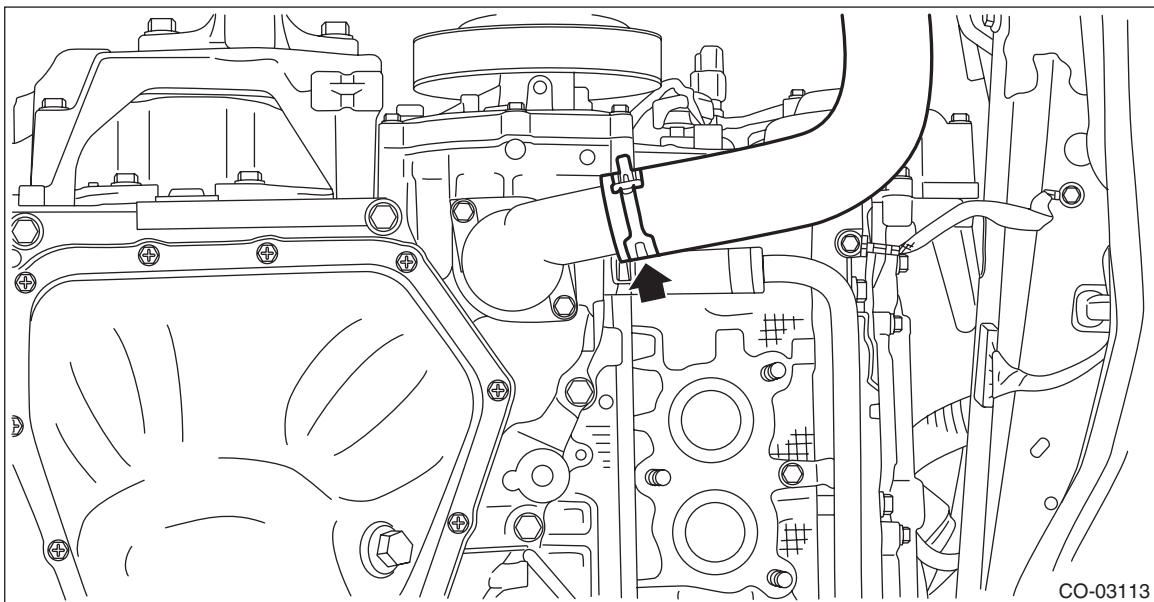
### A: REMOVAL

- 1) Disconnect the ground cable from battery.



FU-07000

- 2) Lift up the vehicle.
- 3) Remove the under cover. <Ref. to EI-33, REMOVAL, Front Under Cover.>
- 4) Drain engine coolant. <Ref. to CO(H4DO)-14, DRAINING OF ENGINE COOLANT, REPLACEMENT, Engine Coolant.>
- 5) Remove the front exhaust pipe. <Ref. to EX(H4DO)-5, REMOVAL, Front Exhaust Pipe.>
- 6) Disconnect the radiator outlet hose from thermostat cover.

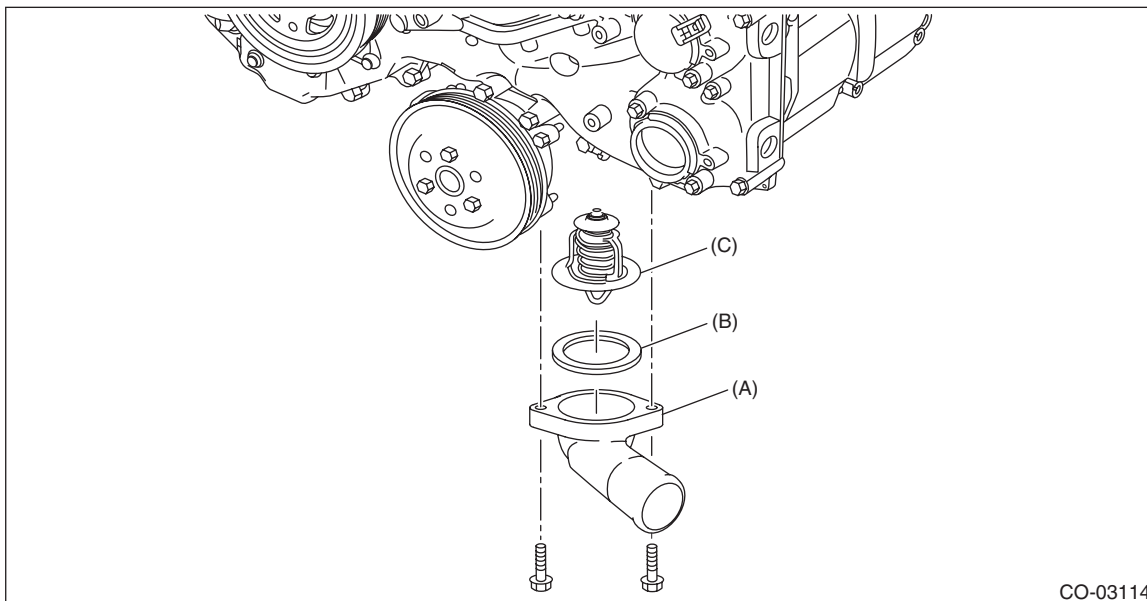


CO-03113

# Thermostat

## COOLING

7) Remove the thermostat cover, and then remove the gasket and thermostat.



(A) Thermostat cover

(B) Gasket

(C) Thermostat

## B: INSTALLATION

1) Install a gasket to thermostat.

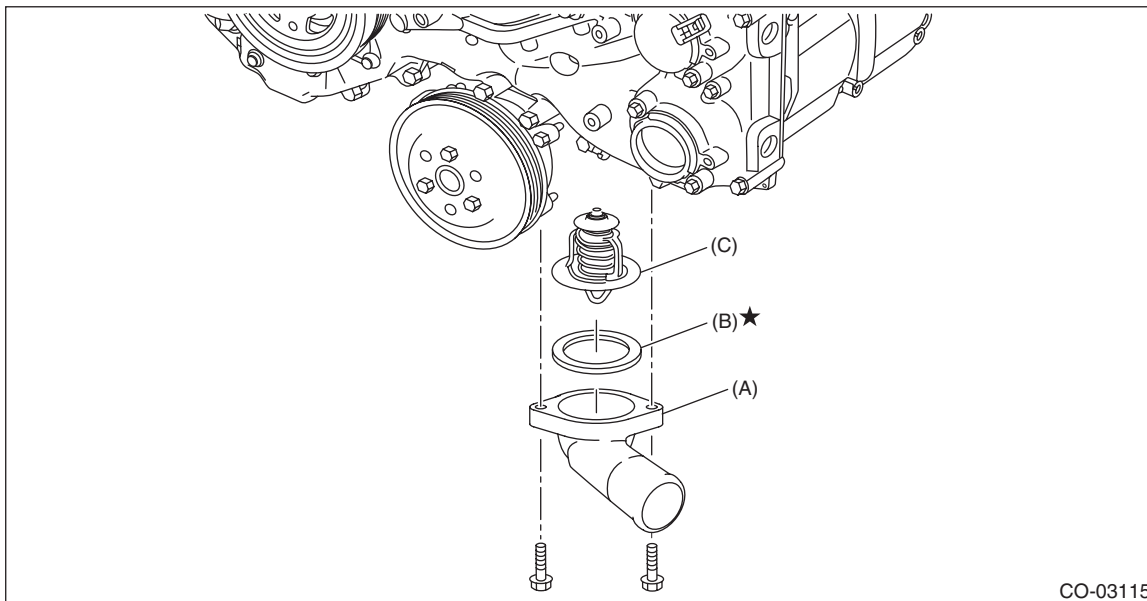
### NOTE:

Use a new gasket.

2) Install the thermostat and thermostat cover.

### Tightening torque:

**6.4 N·m (0.7 kgf·m, 4.7 ft·lb)**

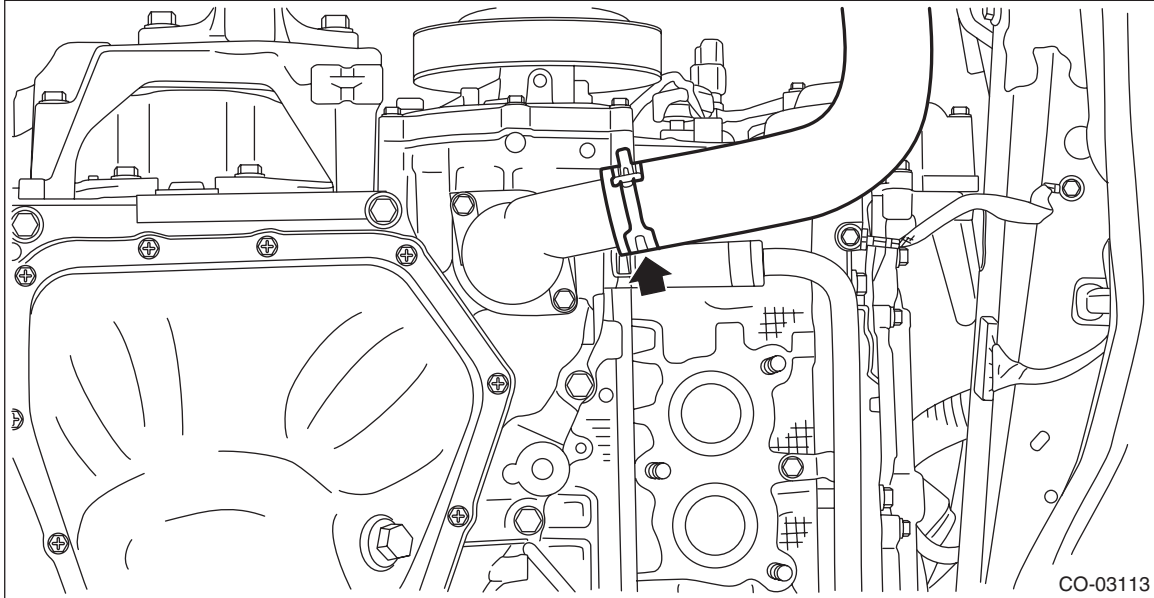


(A) Thermostat cover

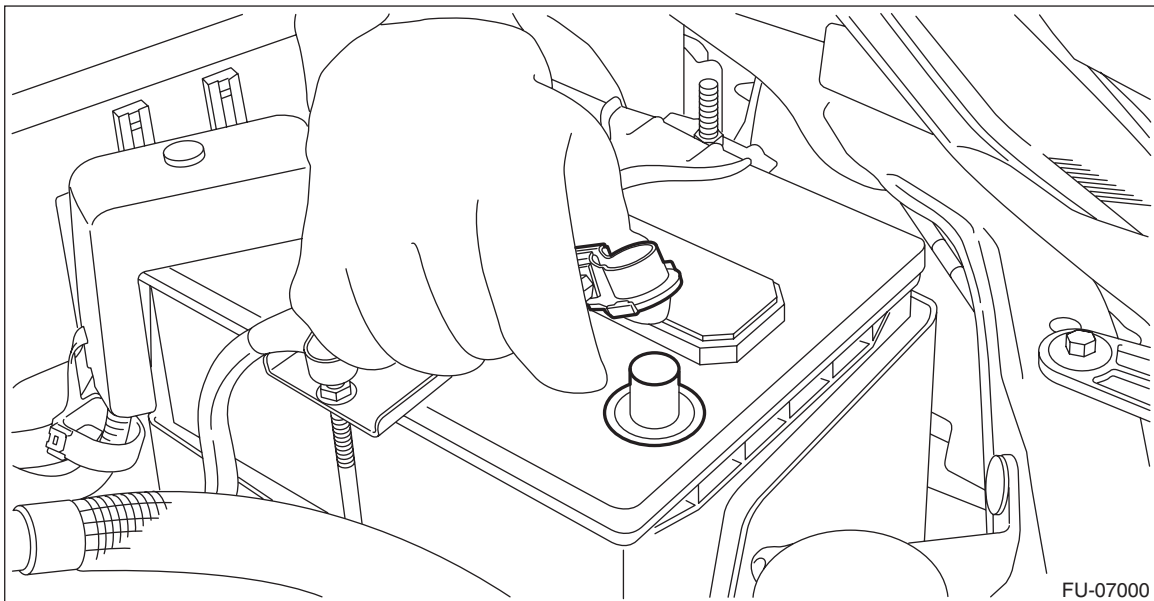
(B) Gasket

(C) Thermostat

- 3) Connect the radiator outlet hose to thermostat cover.



- 4) Install the front exhaust pipe. <Ref. to EX(H4DO)-8, INSTALLATION, Front Exhaust Pipe.>  
5) Install the under cover. <Ref. to EI-33, INSTALLATION, Front Under Cover.>  
6) Lower the vehicle.  
7) Connect the battery ground terminal.



- 8) Fill engine coolant. <Ref. to CO(H4DO)-15, FILLING OF ENGINE COOLANT, REPLACEMENT, Engine Coolant.>

# Thermostat

## COOLING

---

### C: INSPECTION

- 1) Check that the thermostat does not have deformation, cracks or damage.
- 2) Check that the thermostat valve closes completely at an ambient temperature.
- 3) Immerse the thermostat and a thermometer in water. Raise water temperature gradually, and check the temperature and valve lift when the valve begins to open and when the valve is fully opened. Replace the thermostat if faulty.

#### NOTE:

- During the test, agitate the water for even temperature distribution.
- Leave the thermostat in the boiling water for five minutes or more before measuring the valve lift.
- Hold the thermostat with a wire or the like to avoid contacting with container bottom.

#### **Starting temperature to open:**

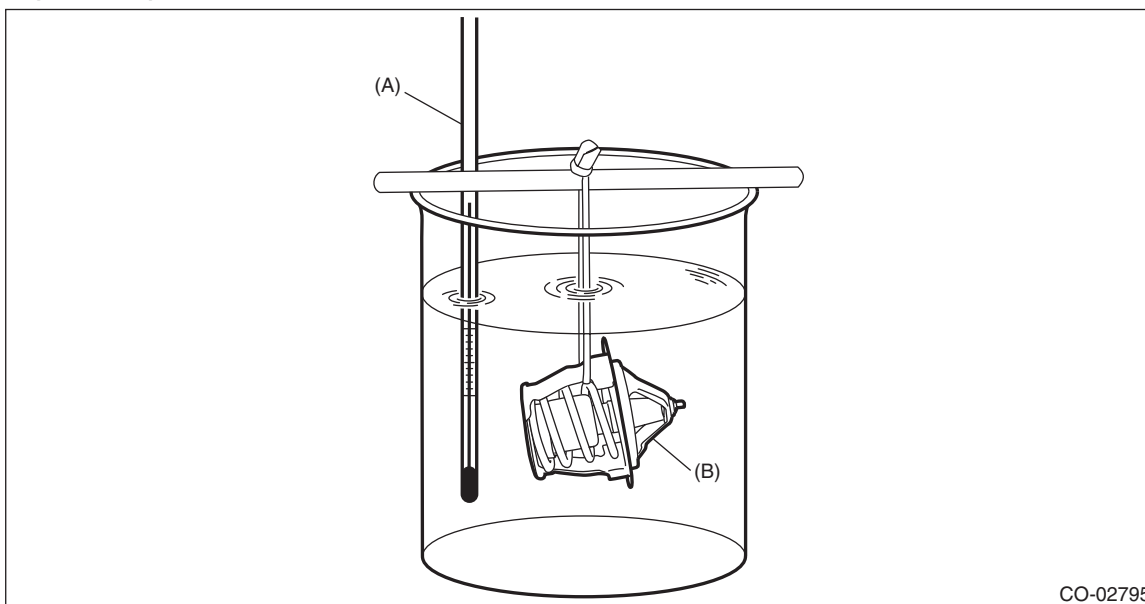
**87 — 91°C (189 — 196°F)**

#### **Full open temperature:**

**98°C (208°F)**

#### **Total valve lift:**

**8.0 mm (0.315 in) or more**



CO-02795

(A) Thermometer

(B) Thermostat