

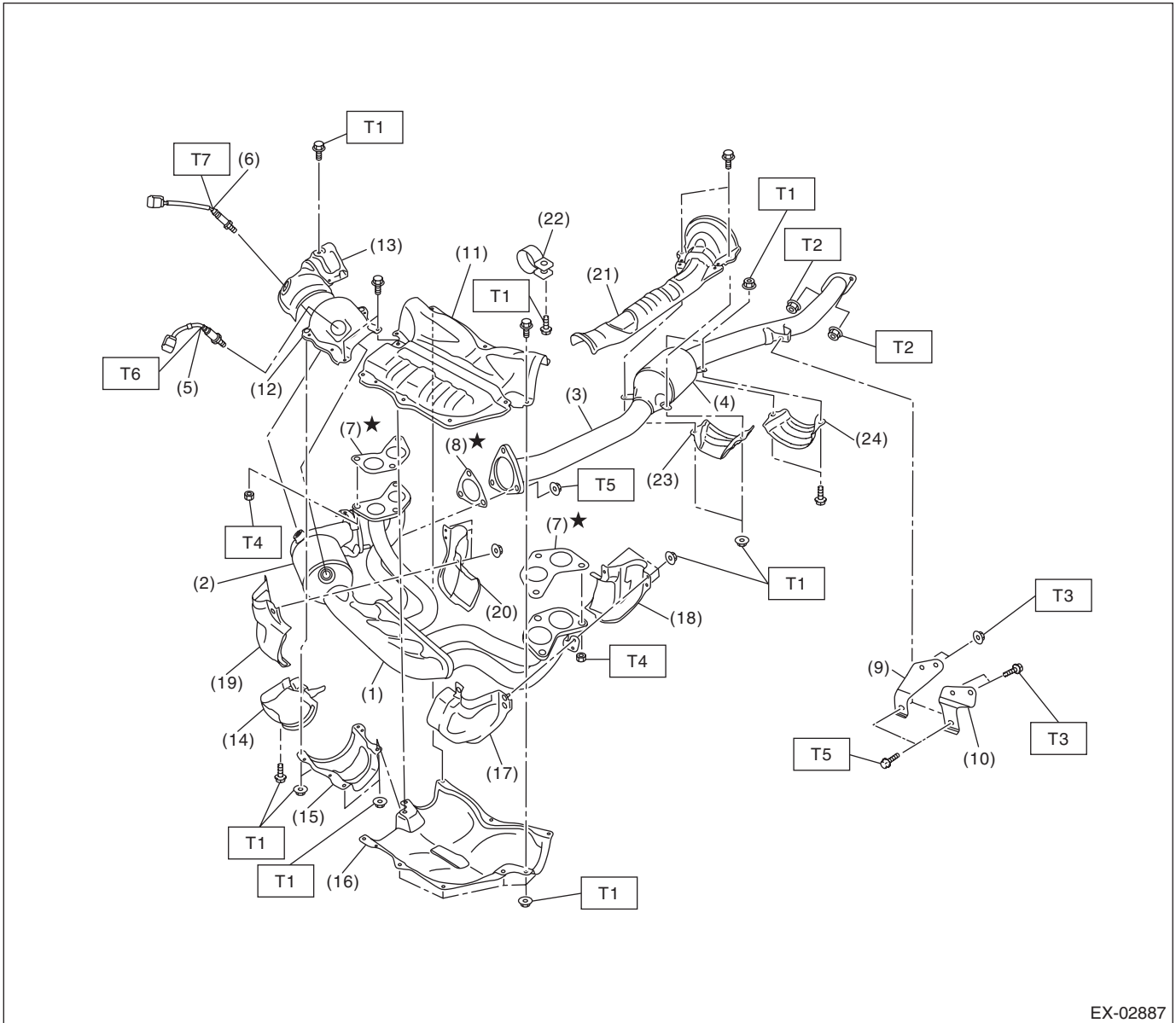
General Description

EXHAUST

1. General Description

A: COMPONENT

1. FRONT EXHAUST PIPE AND CENTER EXHAUST PIPE



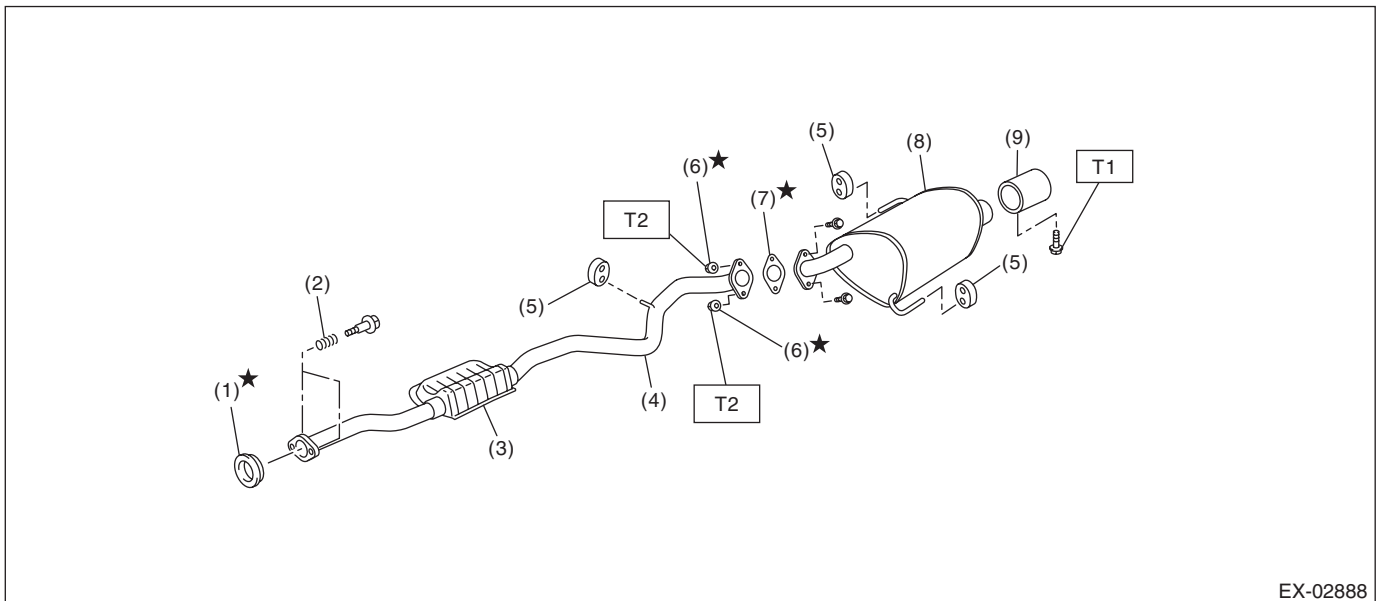
EX-02887

General Description

EXHAUST

(1) Front exhaust pipe	(12) Front catalytic converter upper cover LH	(23) Rear catalytic converter lower cover (front)
(2) Front catalytic converter	(13) Front catalytic converter upper cover RH	(24) Rear catalytic converter lower cover (rear)
(3) Center exhaust pipe	(14) Front catalytic converter lower cover RH	
(4) Rear catalytic converter	(15) Front catalytic converter lower cover LH	Tightening torque: N·m (kgf·m, ft·lb)
(5) Front oxygen (A/F) sensor	(16) Front exhaust pipe lower cover	T1: 13 (1.3, 9.6)
(6) Rear oxygen sensor	(17) Front exhaust pipe side cover LH (front)	T2: 18 (1.8, 13.3)
(7) Gasket	(18) Front exhaust pipe side cover LH (rear)	T3: 23 (2.3, 17.0)
(8) Gasket	(19) Front exhaust pipe side cover RH (front)	T4: 30 (3.1, 22.1)
(9) Hanger bracket (MT model)	(20) Front exhaust pipe side cover RH (rear)	T5: 35 (3.6, 25.8)
(10) Hanger bracket (CVT model)	(21) Center exhaust pipe upper cover	T6: <Ref. to FU(H4DO)-93, INSTALLATION, Front Oxygen (A/F) Sensor.>
(11) Front exhaust pipe upper cover	(22) Band	T7: <Ref. to FU(H4DO)-98, INSTALLATION, Rear Oxygen Sensor.>

2. REAR EXHAUST PIPE AND MUFFLER



EX-02888

(1) Gasket	(6) Self-locking nut
(2) Spring	(7) Gasket
(3) Chamber	(8) Muffler
(4) Rear exhaust pipe	(9) Muffler cutter (models with muffler cutter)
(5) Cushion rubber	

Tightening torque: N·m (kgf·m, ft·lb)

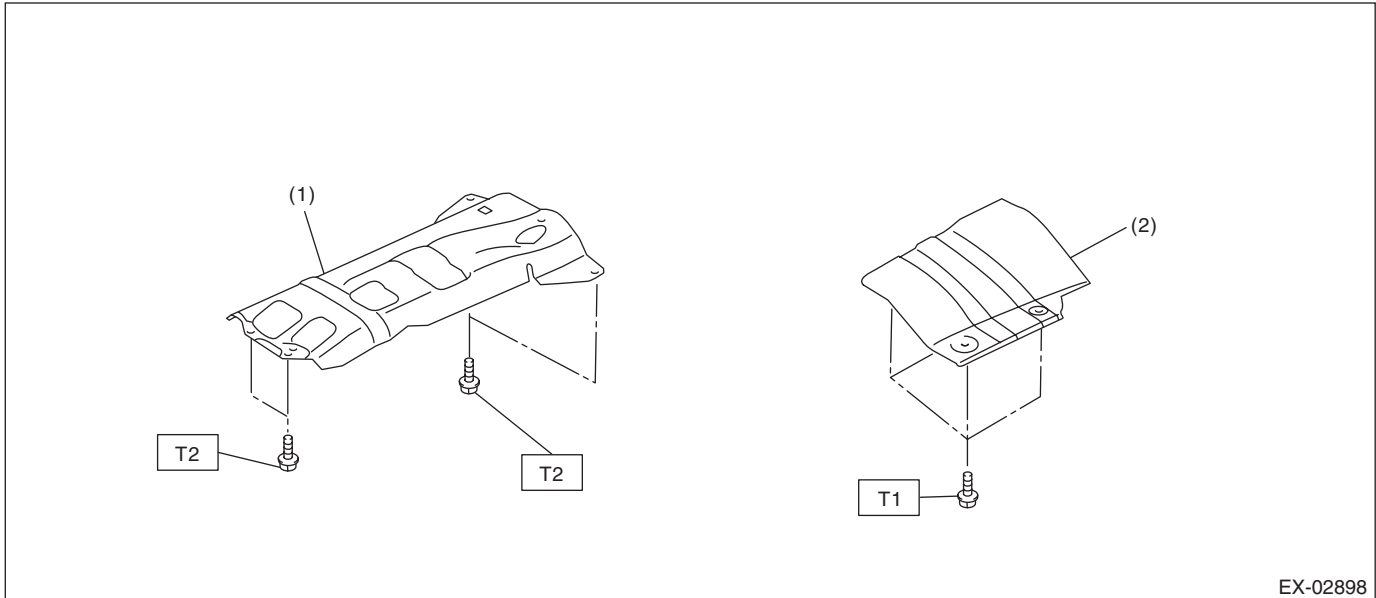
T1: 7.5 (0.8, 5.5)

T2: 48 (4.9, 35.4)

General Description

EXHAUST

3. HEAT SHIELD COVER



(1) Center exhaust cover

(2) Rear exhaust cover

Tightening torque: N·m (kgf·m, ft·lb)

T1: 10 (1.0, 7.4)

T2: 18 (1.8, 13.3)

B: CAUTION

- Prior to starting work, pay special attention to the following:
 1. Always wear work clothes, a work cap, and protective shoes. Additionally, wear a helmet, protective goggles, etc. if necessary.
 2. Protect the vehicle using a seat cover, fender cover, etc.
 3. Prepare the service tools, clean cloth, containers to catch grease and oil, etc.
- Vehicle components are extremely hot immediately after driving. Be wary of receiving burns from heated parts.
- When performing a repair, identify the cause of trouble and avoid unnecessary removal, disassembly and replacement.
- Before disconnecting connectors of sensors or units, be sure to disconnect the ground cable from battery.
- Always use the jack-up point when the shop jacks or rigid racks are used to support the vehicle.
- Remove contamination including dirt and corrosion before removal, installation, disassembly or assembly.
- Keep the removed parts in order and protect them from dust and dirt.
- All removed parts, if to be reused, should be reinstalled in the original positions with attention to the correct directions, etc.
- Bolts, nuts and washers should be replaced with new parts as required.
- Be sure to tighten the fasteners including bolts and nuts to the specified torque.
- If any fat adheres to the exhaust pipe, wipe it off. Otherwise a fire may happen.