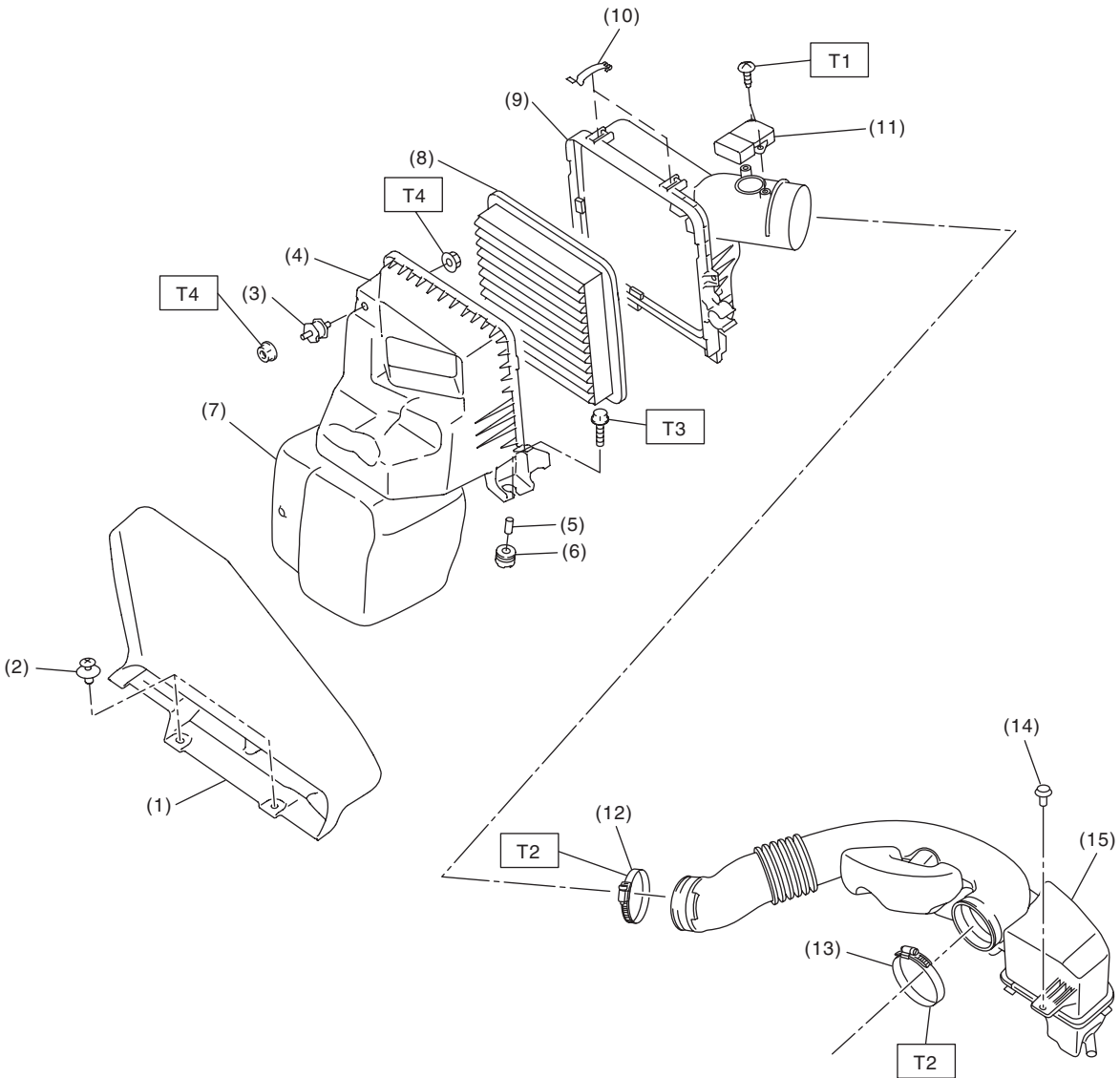


# General Description

INTAKE (INDUCTION)

## 1. General Description

### A: COMPONENT



IN-03483

IN(H4DO)-2

# General Description

INTAKE (INDUCTION)

---

(1) Air intake duct	(8) Air cleaner element	(15) Air intake boot
(2) Clip	(9) Air cleaner case (rear)	
(3) Cushion	(10) Clip	<b>Tightening torque: N·m (kgf·m, ft·lb)</b>
(4) Air cleaner case (front)	(11) Mass air flow and intake air temperature sensor	<b>T1: 1 (0.1, 0.7)</b>
(5) Spacer	(12) Clamp	<b>T2: 3 (0.3, 2.2)</b>
(6) Cushion	(13) Clamp	<b>T3: 6 (0.6, 4.4)</b>
(7) Resonator chamber	(14) Clip	<b>T4: 7.5 (0.8, 5.5)</b>

---

## B: CAUTION

- Prior to starting work, pay special attention to the following:
  1. Always wear work clothes, a work cap, and protective shoes. Additionally, wear a helmet, protective goggles, etc. if necessary.
  2. Protect the vehicle using a seat cover, fender cover, etc.
  3. Prepare the service tools, clean cloth, containers to catch grease and oil, etc.
- Vehicle components are extremely hot immediately after driving. Be wary of receiving burns from heated parts.
- When performing a repair, identify the cause of trouble and avoid unnecessary removal, disassembly and replacement.
- Before disconnecting connectors of sensors or units, be sure to disconnect the ground cable from battery.
- Always use the jack-up point when the shop jacks or rigid racks are used to support the vehicle.
- Remove contamination including dirt and corrosion before removal, installation, disassembly or assembly.
- Keep the removed parts in order and protect them from dust and dirt.
- All removed parts, if to be reused, should be reinstalled in the original positions with attention to the correct directions, etc.
- Bolts, nuts and washers should be replaced with new parts as required.
- Be sure to tighten the fasteners including bolts and nuts to the specified torque.