

EGR Valve

FUEL INJECTION (FUEL SYSTEMS)

11.EGR Valve

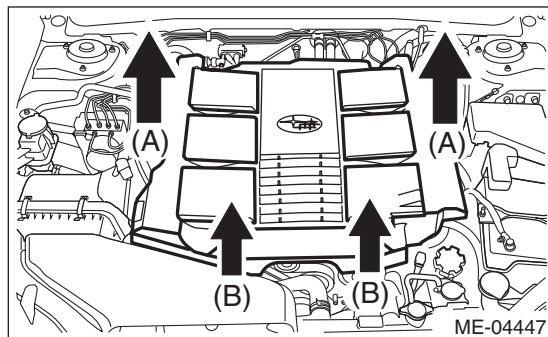
A: REMOVAL

1) Remove the collector cover.

NOTE:

Follow the steps below when removing the collector cover.

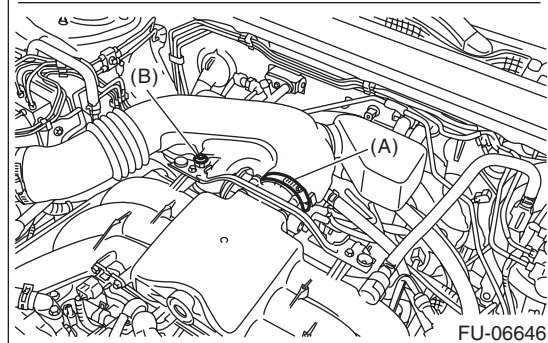
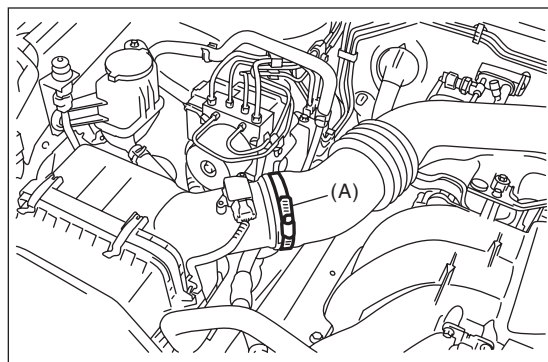
- (1) Pull up the two points at the rear (A).
- (2) Pull up the two points at the front (B) while moving them forward.



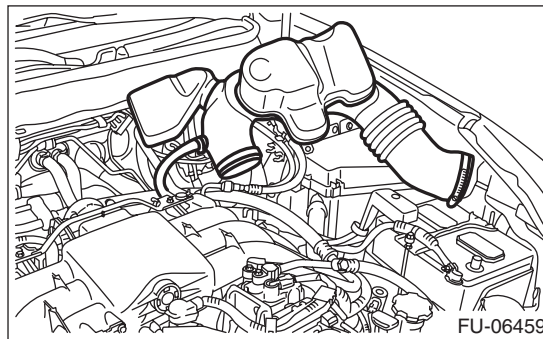
2) Disconnect the ground cable from battery.

3) Loosen the clamp (A) which connects the air intake boot assembly.

4) Loosen the bolt (B) which secures the air intake boot assembly to the collector cover bracket.



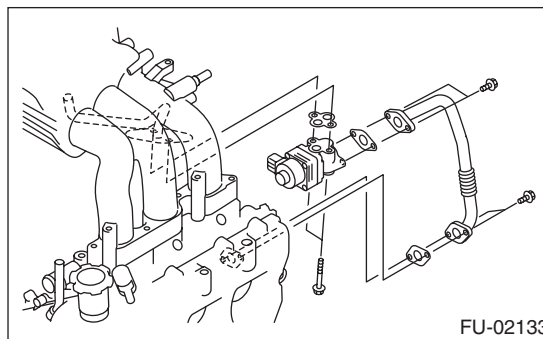
5) Remove the air intake boot assembly, and move it to the left side wheel apron.



6) Remove the starter. <Ref. to SC(H6DO)-7, REMOVAL, Starter.>

7) Remove the EGR pipe from EGR valve and cylinder head.

8) Remove the EGR valve from intake manifold.



9) Disconnect the connector from EGR valve.

B: INSTALLATION

Install in the reverse order of removal.

NOTE:

Use a new gasket.

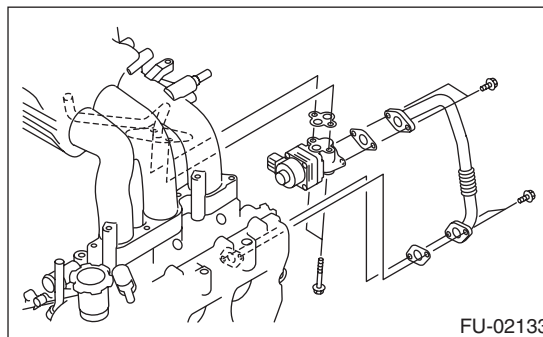
Tightening torque:

EGR valve

19 N·m (1.9 kgf-m, 14.0 ft-lb)

EGR pipe

6.4 N·m (0.7 kgf-m, 4.7 ft-lb)



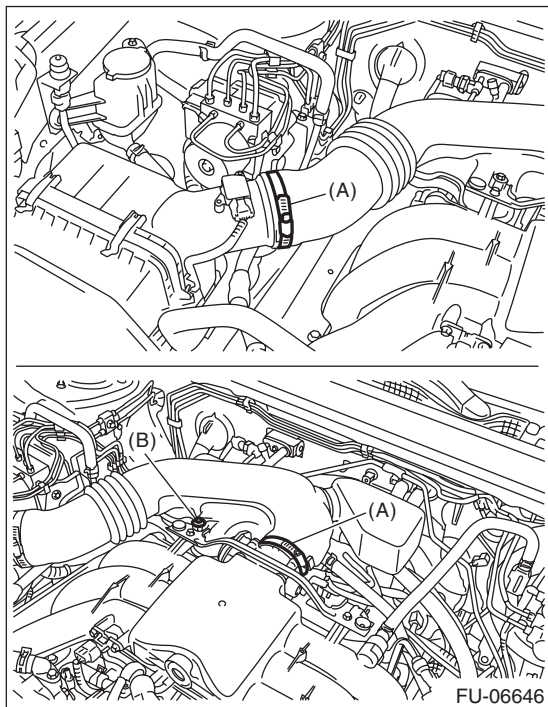
Tightening torque:

Clamp (A)

3 N·m (0.3 kgf·m, 2.2 ft·lb)

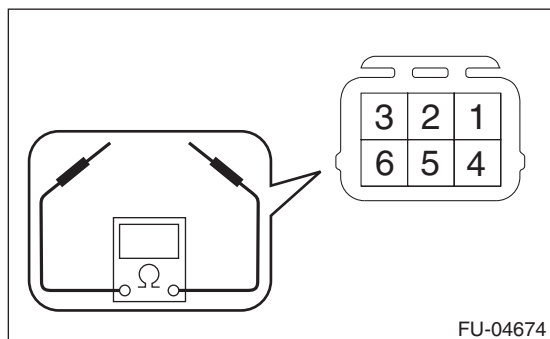
Bolt (B)

6.5 N·m (0.7 kgf·m, 4.8 ft·lb)



C: INSPECTION

- 1) Check that the EGR valve has no deformation, cracks or other damages.
- 2) Measure the resistance between EGR valve terminals.



Terminal No.	Standard
2 and 1	22±2 Ω
2 and 3	22±2 Ω
5 and 4	22±2 Ω
5 and 6	22±2 Ω