

# General Description

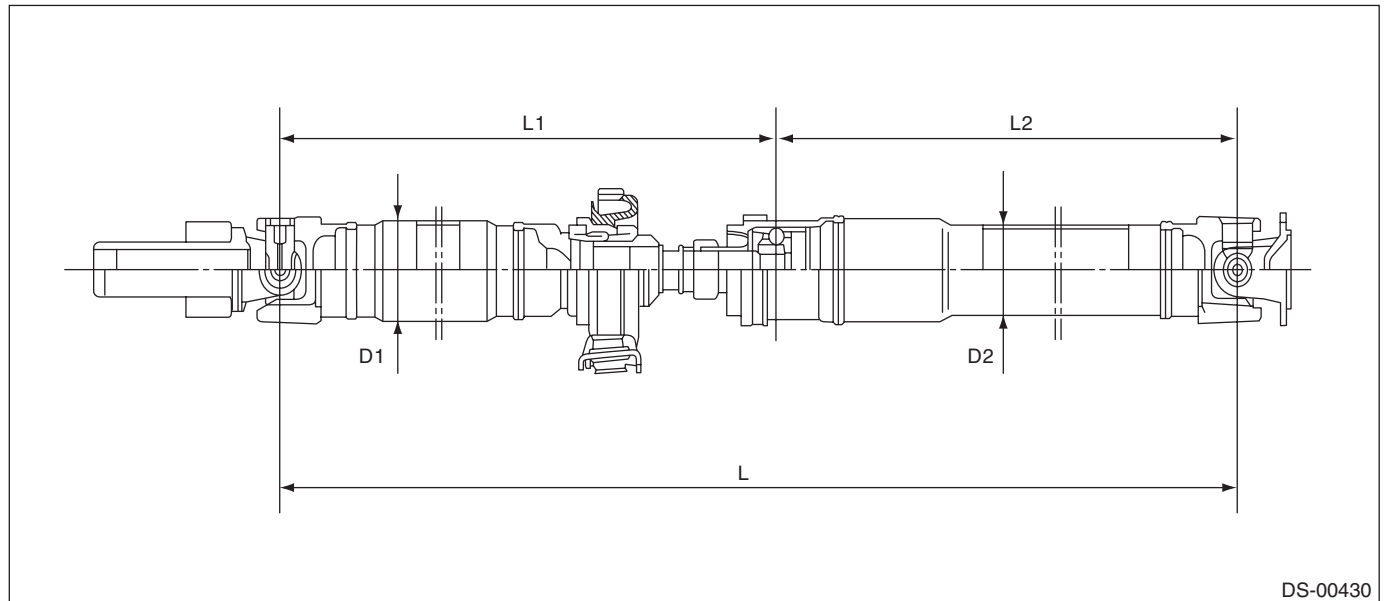
## DRIVE SHAFT SYSTEM

### 1. General Description

#### A: SPECIFICATION

##### 1. PROPELLER SHAFT

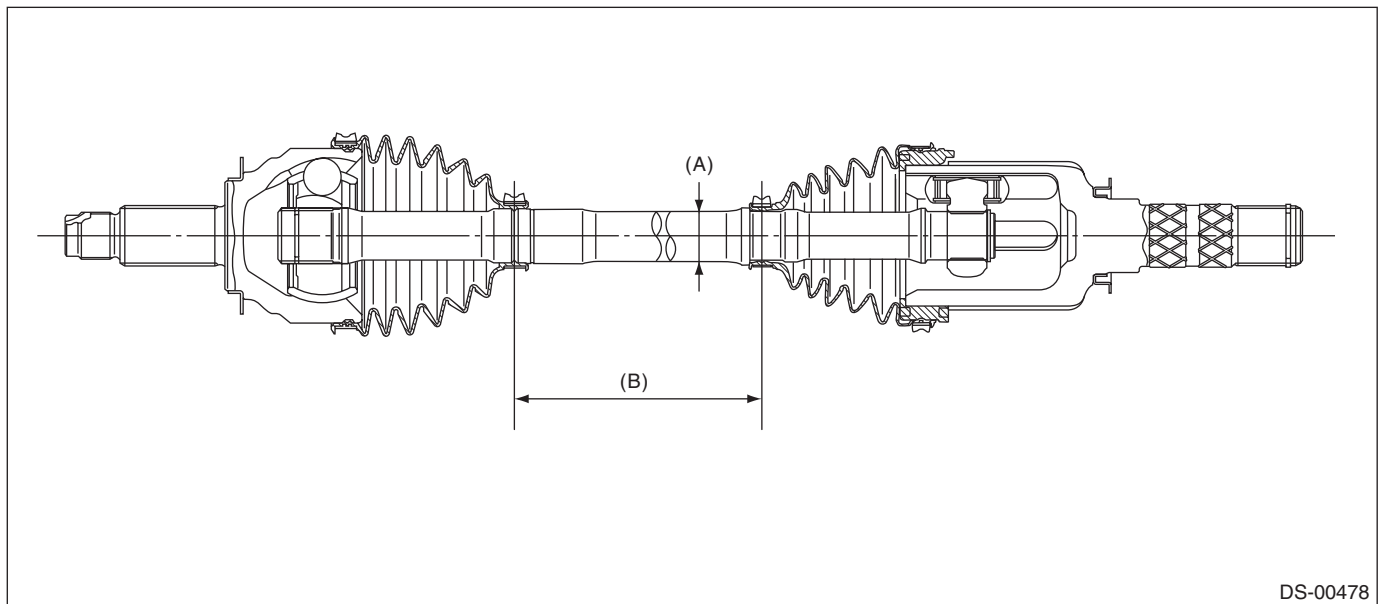
| Car line   |         | All models  |               |
|--|---------|-------------|---------------|
| Propeller shaft type                               |         | EDJ         |               |
| Front propeller shaft Joint-to-Joint length: $L_1$ | mm (in) | CVT (TR580) | 675.5 (26.59) |
|  |         | 6MT         | 735.5 (28.96) |
|  |         | 5AT         | 562 (22.13)   |
| Rear propeller shaft Joint-to-Joint length: $L_2$  |         | mm (in)     | 828 (32.6)    |
| Outer diameter of tube:                            | mm (in) | $D_1$       | 63.5 (2.500)  |
|  |         | $D_2$       | 57.5 (2.264)  |



# General Description

## 2. FRONT DRIVE SHAFT ASSEMBLY

| Model      | Type of drive shaft | Axle diameter $\phi$ mm (in) | Axle length mm (in) |
|------------|---------------------|------------------------------|---------------------|
| All models | AC + AAR            | 22.67 (0.89)                 | 352.4 (13.87)       |



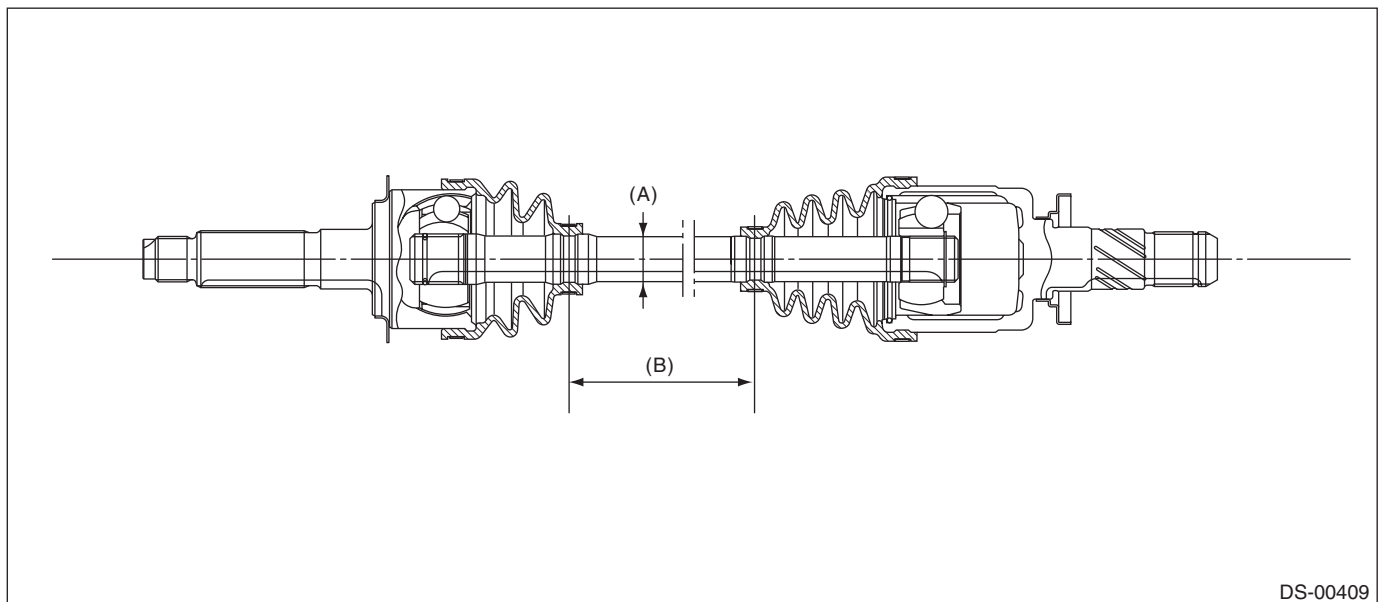
DS-00478

(A) Axle diameter

(B) Axle length

## 3. REAR DRIVE SHAFT ASSEMBLY

| Model            | Type of drive shaft | Axle diameter $\phi$ mm (in) | Axle length mm (in) |
|------------------|---------------------|------------------------------|---------------------|
| Sedan CVT        | BJ + DOJ            | 22 (0.87)                    | 400.6 (15.77)       |
| Other than above | EBJ + DOJ           | 22 (0.87)                    | 394.3 (15.52)       |



DS-00409

(A) Axle diameter

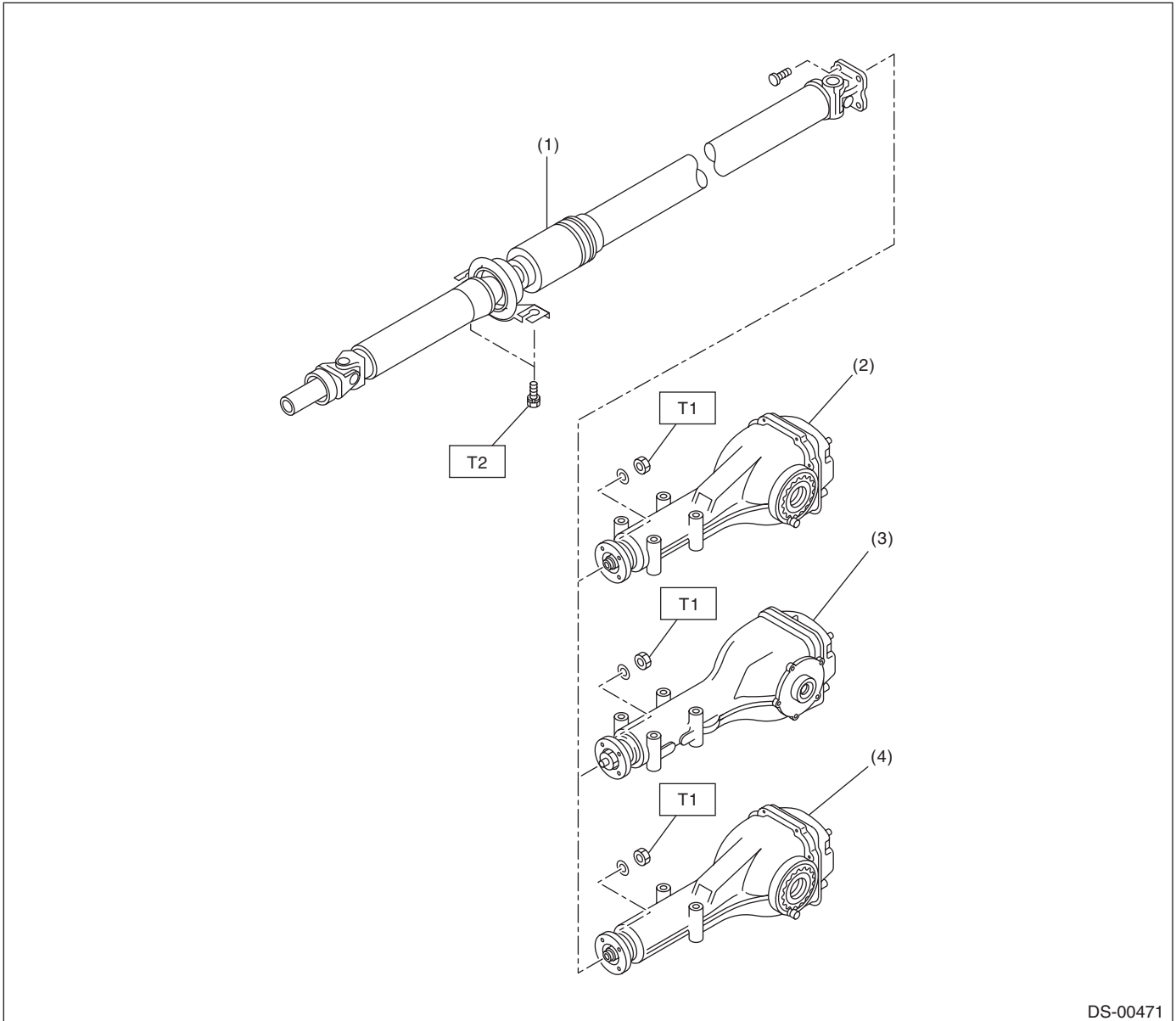
(B) Axle length

# General Description

## DRIVE SHAFT SYSTEM

### B: COMPONENT

#### 1. PROPELLER SHAFT



DS-00471

- (1) Propeller shaft
- (2) Rear differential (VA1-type)

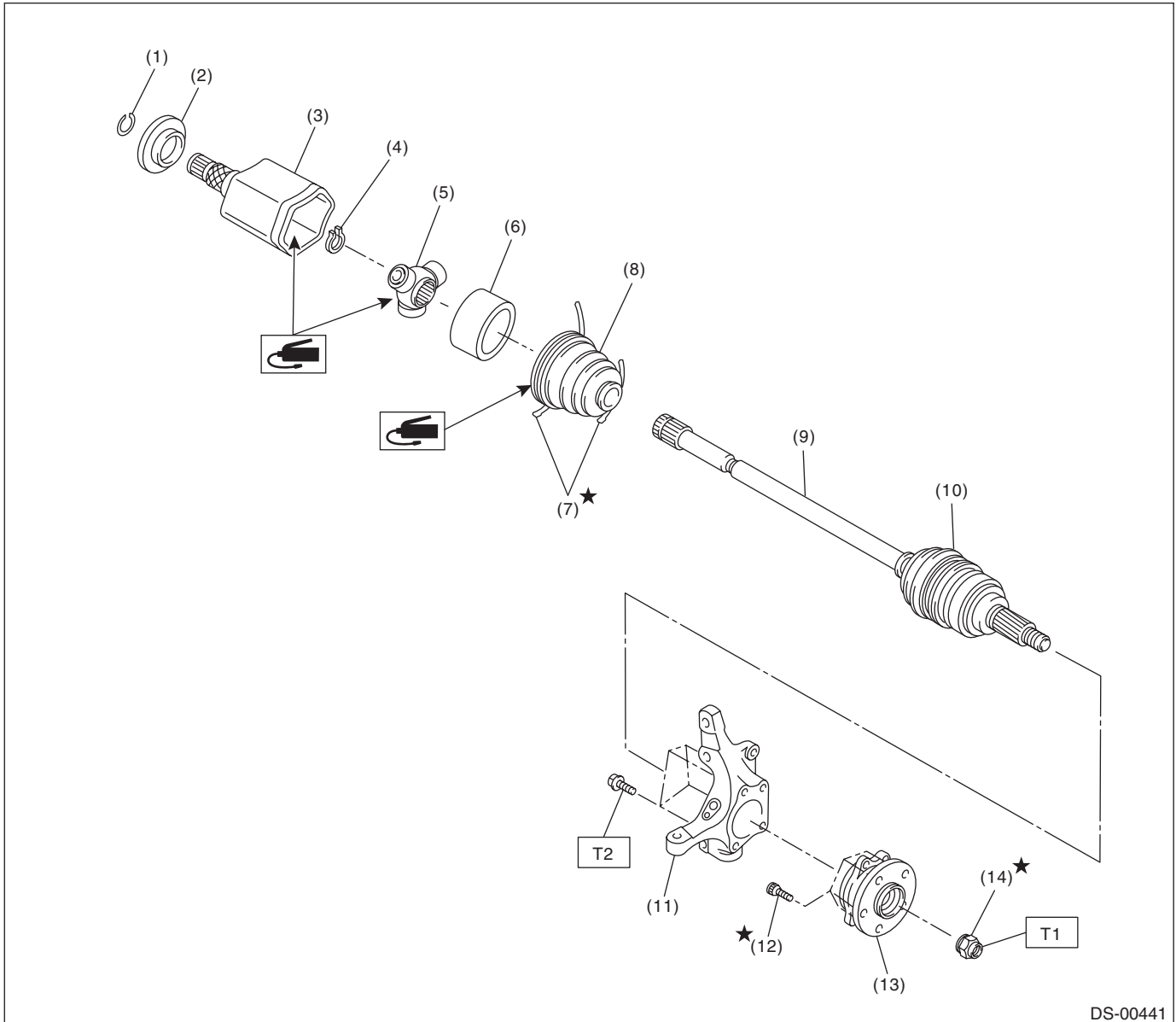
- (3) Rear differential (T-type)
- (4) Rear differential (VA2-type)

**Tightening torque: N·m (kgf·m, ft·lb)**

**T1: 31 (3.16, 22.9)**

**T2: 52 (5.3, 38.4)**

## 2. FRONT AXLE



- (1) Circlip
- (2) Baffle plate
- (3) Outer race (AAR)
- (4) Snap ring
- (5) Trunnion
- (6) Grommet

- (7) Boot band
- (8) Boot (AAR)
- (9) AC shaft ASSY
- (10) Boot (AC)
- (11) Front axle housing
- (12) Hub bolt

- (13) Front hub unit bearing
- (14) Axle nut

**Tightening torque: N·m (kgf·m, ft·lb)**

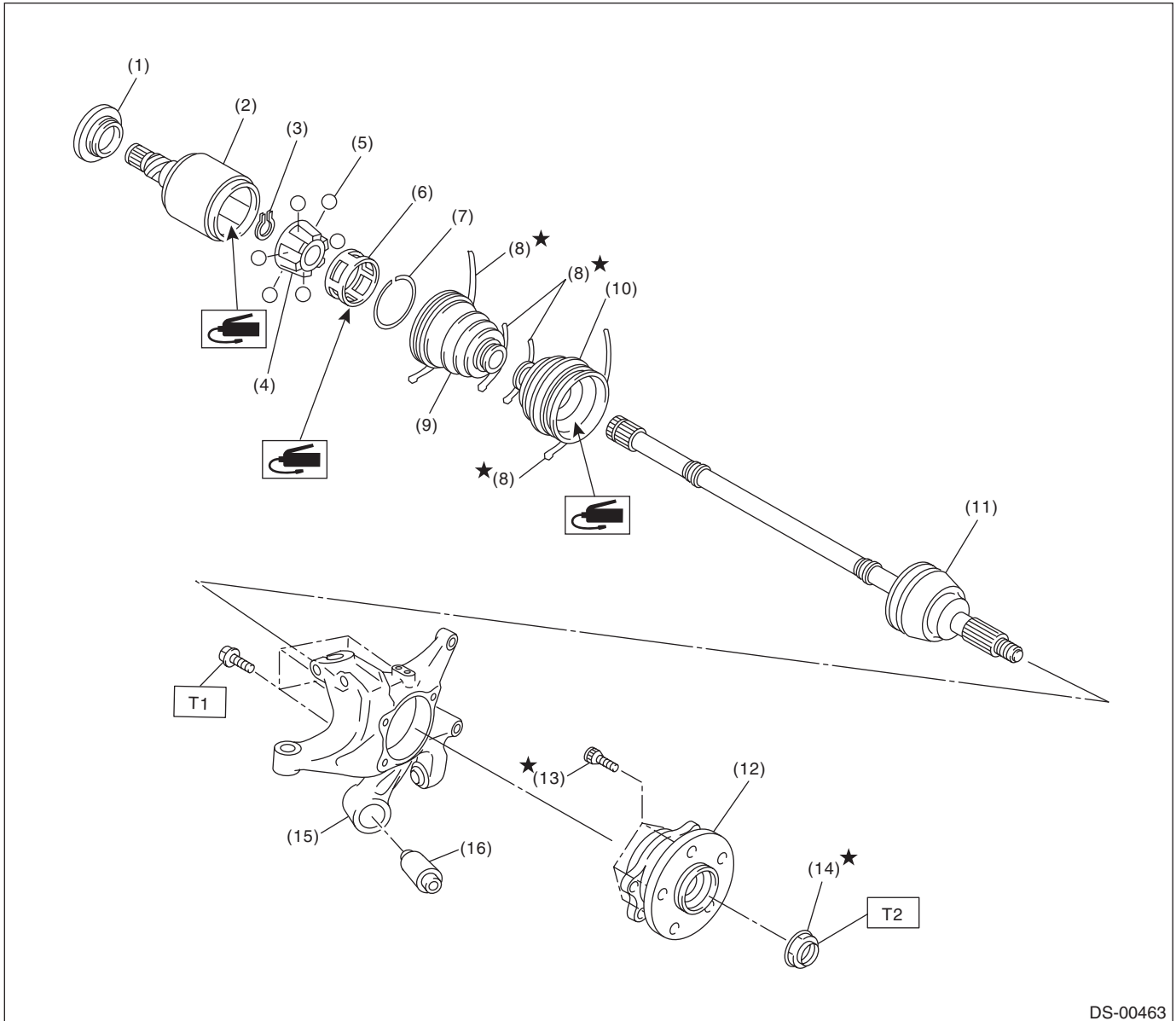
**T1: 220 (22.43, 162.3)**

**T2: 65 (6.63, 47.9)**

# General Description

## DRIVE SHAFT SYSTEM

### 3. REAR AXLE



DS-00463

- |                      |   |                        |
|----------------------|---|------------------------|
| (1) Baffle plate     | (8) Boot band                               | (14) Axle nut          |
| (2) Outer race (DOJ) | (9) Boot (DOJ)                              | (15) Rear axle housing |
| (3) Snap ring        | (10) Boot (BJ)                              | (16) Rear bushing      |
| (4) Inner race       | (11) BJ shaft ASSY (sedan CVT model)        |                        |
| (5) Ball             | EBJ shaft ASSY (except for sedan CVT model) |                        |
| (6) Cage             | (12) Rear hub unit bearing                  |                        |
| (7) Snap ring        | (13) Hub bolt                               |                        |

**Tightening torque: N·m (kgf·m, ft·lb)**

**T1: 65 (6.63, 47.9)**

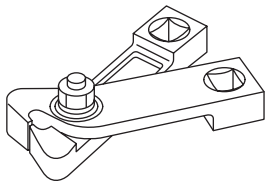
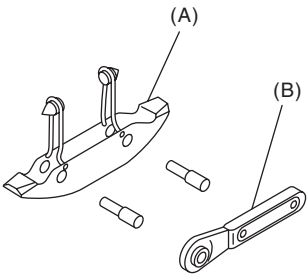
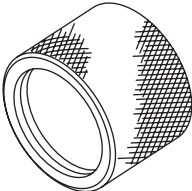
**T2: 240 (24.47, 177.0)**

## C: CAUTION

- Wear appropriate work clothing, including a helmet, protective goggles and protective shoes when performing any work.
- Remove contamination including dirt and corrosion before removal, installation or disassembly.
- Keep the disassembled parts in order and protect them from dust and dirt.
- Before removal, installation or disassembly, be sure to clarify the failure. Avoid unnecessary removal, installation, disassembly and replacement.
- Vehicle components are extremely hot after driving. Be wary of receiving burns from heated parts.
- Use SUBARU genuine grease etc. or equivalent. Do not mix grease etc. of different grades or manufacturers.
- Be sure to tighten fasteners including bolts and nuts to the specified torque.
- Place shop jacks or rigid racks at the specified points.
- Apply grease onto sliding or revolving surfaces before installation.
- Before installing snap rings, apply sufficient amount of grease to avoid damage and deformation.
- Before securing a part on a vise, place cushioning materials such as wood blocks, aluminum plates, or waste cloth between the part and the vise.

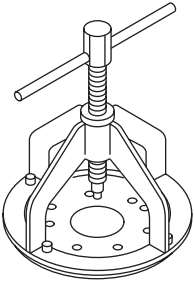
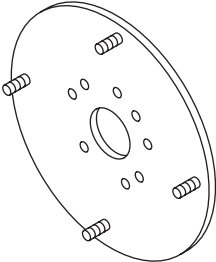
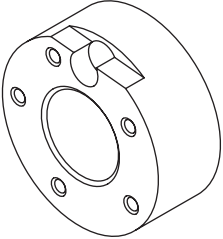
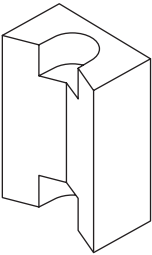
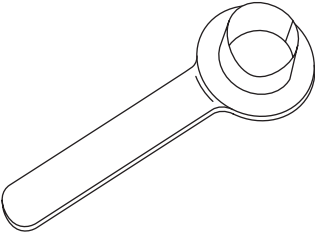
## D: PREPARATION TOOL

### 1. SPECIAL TOOL

| ILLUSTRATION  | Part No.   | DESCRIPTION                          | REMARKS  |
|---|------------|--------------------------------------|--|
|  <p style="text-align: center;">ST28099AC000</p>  | 28099AC000 | BOOT BAND PLIER                      | Used for tightening the boot band.<br>(Front boot band)                          |
|  <p style="text-align: center;">ST-925091000</p> | 925091000  | BAND TIGHTENING TOOL                 | Used for tightening the boot band.<br>(A) Jig for the band<br>(B) Ratchet wrench |
|  <p style="text-align: center;">ST18675AA000</p> | 18675AA000 | DIFFERENTIAL SIDE OIL SEAL INSTALLER | Used for installing the differential side retainer oil seal.                     |

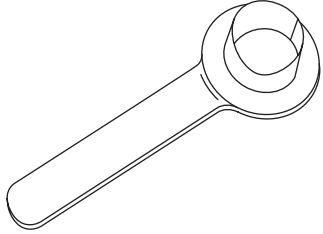
# General Description

## DRIVE SHAFT SYSTEM

| ILLUSTRATION  | Part No.   | DESCRIPTION             | REMARKS  |
|---|------------|-------------------------|--|
|  <p style="text-align: center;">ST-926470000</p>   | 926470000  | AXLE SHAFT PULLER       | <ul style="list-style-type: none"> <li>• Used for removing the axle shaft.</li> <li>• Used together with AXLE SHAFT PULLER PLATE (28099PA110).</li> </ul>      |
|  <p style="text-align: center;">ST28099PA110</p>   | 28099PA110 | AXLE SHAFT PULLER PLATE | Exchange with the plate of the AXLE SHAFT PULLER (926470000) to use.   |
|  <p style="text-align: center;">ST-927080000</p>  | 927080000  | HUB STAND               | Used for assembling hub bolt in hub.   |
|  <p style="text-align: center;">ST28399AG000</p> | 28399AG000 | HUB STAND               | Used for extracting hub bolt.  |
|  <p style="text-align: center;">ST28099PA090</p> | 28099PA090 | OIL SEAL PROTECTOR      | <ul style="list-style-type: none"> <li>• Used for installing the rear drive shaft to the rear differential.</li> <li>• For protecting the oil seal.</li> </ul> |

# General Description

DRIVE SHAFT SYSTEM

| ILLUSTRATION  | Part No.   | DESCRIPTION        | REMARKS  |
|---|------------|--------------------|--|
|  <p>ST28399SA010</p> | 28399SA010 | OIL SEAL PROTECTOR | <ul style="list-style-type: none"> <li>• Used for installing front drive shaft into front differential.</li> <li>• For protecting the oil seal.</li> </ul> |

## 2. GENERAL TOOL

| TOOL NAME                 | REMARKS  |
|---------------------------|--|
| Tie-rod ball joint puller | Used for disconnecting joints.                     |
| Puller                    | Used for removing the ball joint from knuckle arm. |
| Dial gauge                | Used for inspecting the propeller shaft run-out.   |
| Extension cap             | Used for preventing leakage of gear oil or ATF.    |
| Crowbar                   | Used for extracting drive shaft.                   |