

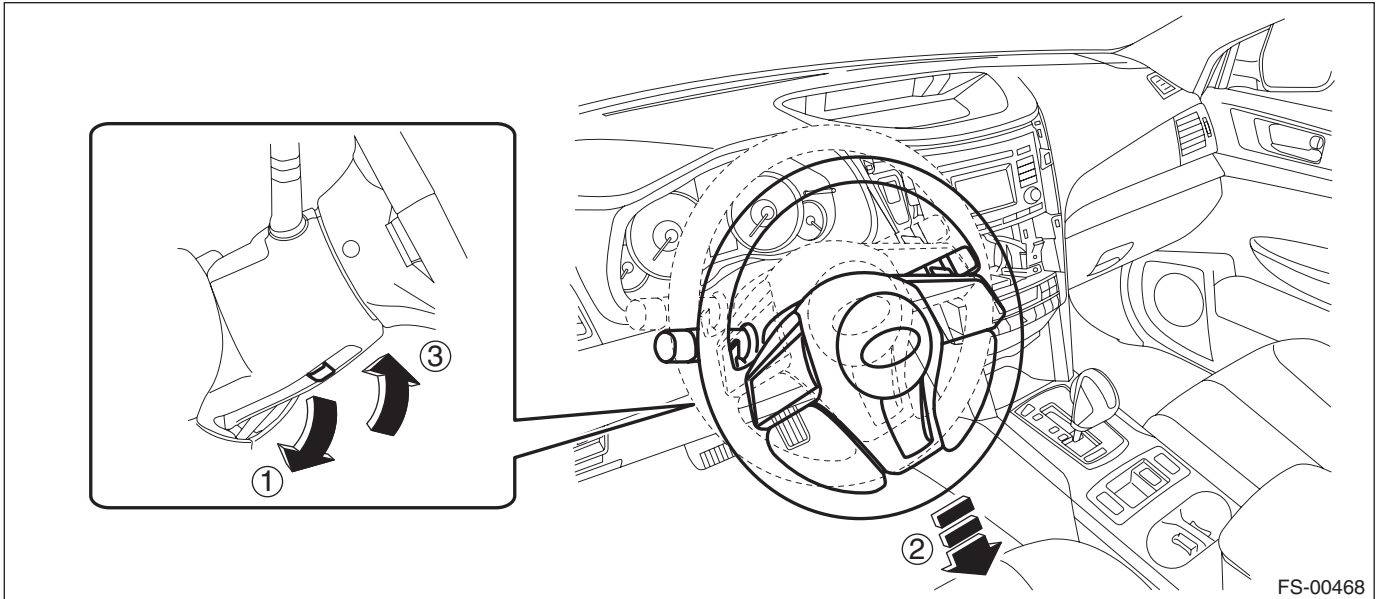
Universal Joint

POWER ASSISTED SYSTEM (POWER STEERING)

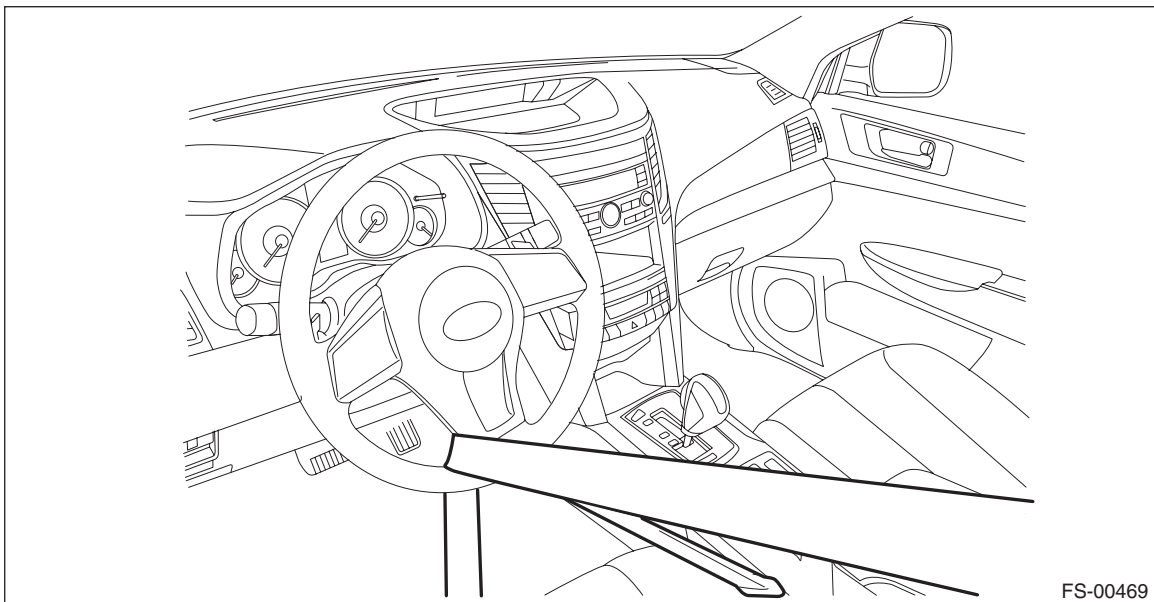
3. Universal Joint

A: REMOVAL

1) Adjust the tilt position of the steering column to the lowest position and lock the tilt lever.



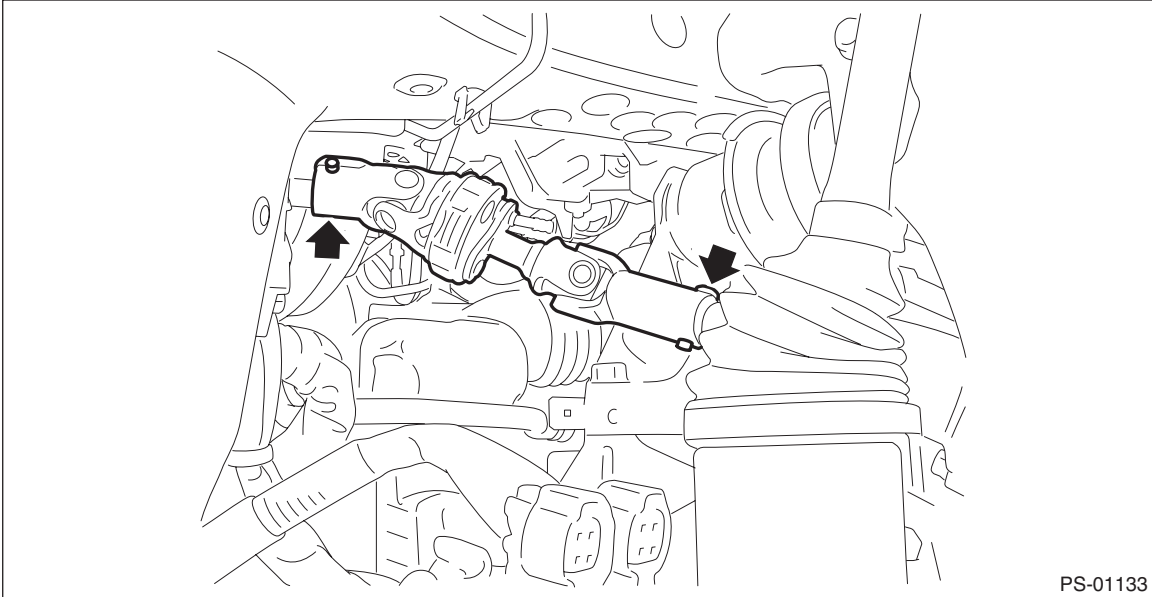
2) Prevent the steering wheel from turning using the seat belt.



Universal Joint

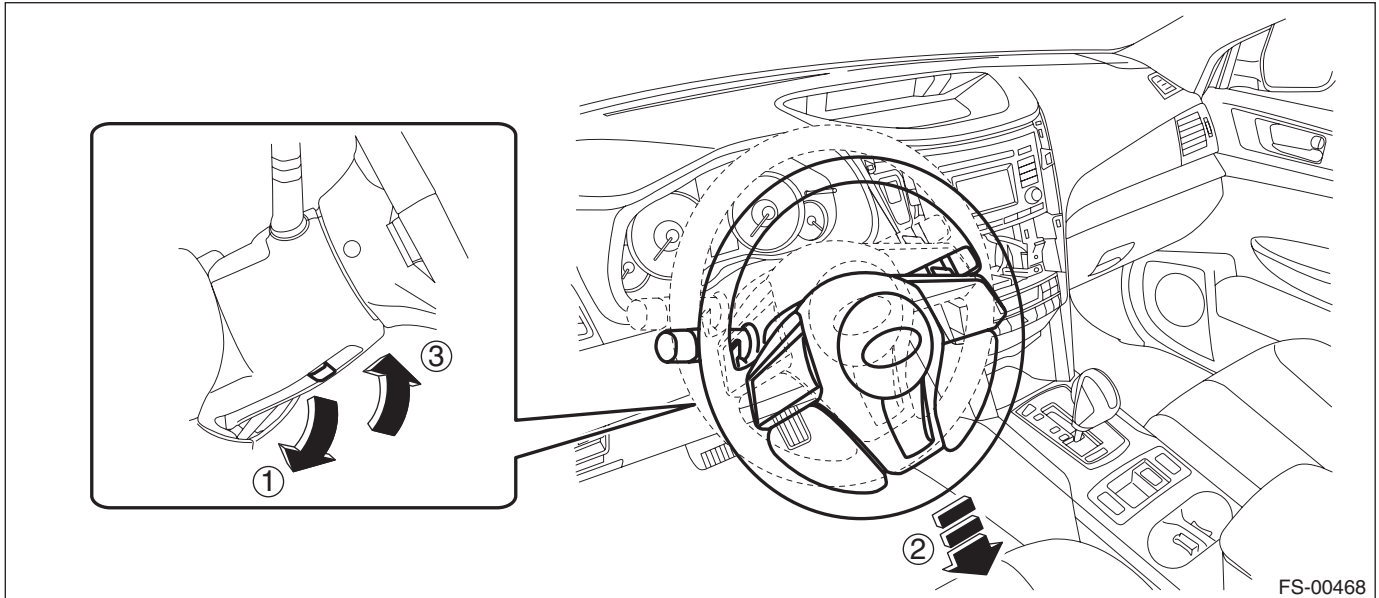
POWER ASSISTED SYSTEM (POWER STEERING)

- 3) Remove the universal joint.
 - (1) Place alignment marks on universal joint.
 - (2) Remove the universal joint bolt and remove the universal joint.



B: INSTALLATION

- 1) Before installation, check the universal joint. <Ref. to PS-23, INSPECTION, Universal Joint.>
- 2) Adjust the tilt position of the steering column to the lowest position and lock the tilt lever.



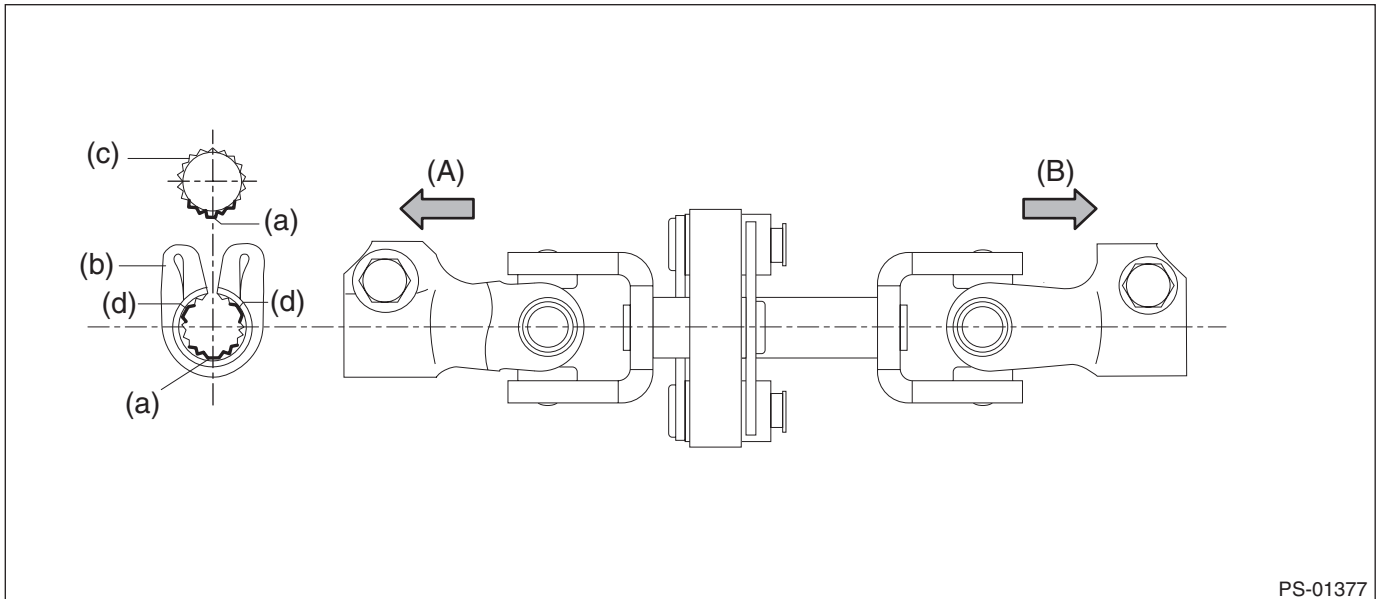
Universal Joint

POWER ASSISTED SYSTEM (POWER STEERING)

3) Align the cutout portion (a) at serrated section of the column shaft (c) and yoke (b), then install the universal joint into column shaft.

CAUTION:

Be sure to align the protrusion section (a) of the column shaft side with the cutout (a) of the serration. If the protrusion is aligned with the other cutout (d), the universal joint bolt cannot be assembled.



(A) Column shaft side

(B) Gearbox side

4) Install the universal joint to the serrations of gearbox assembly by matching alignment marks.
5) Tighten the bolts on the gearbox side first, and then the column shaft side.

CAUTION:

Be sure to follow the tightening order and tightening torque of universal joint to avoid the steering effort from becoming heavy.

Tightening torque:

24 N·m (2.45 kgf·m, 17.7 ft-lb)

Clearance:

Universal joint coupling to adjacent parts: 15 mm (0.59 in) or more

Universal Joint

POWER ASSISTED SYSTEM (POWER STEERING)

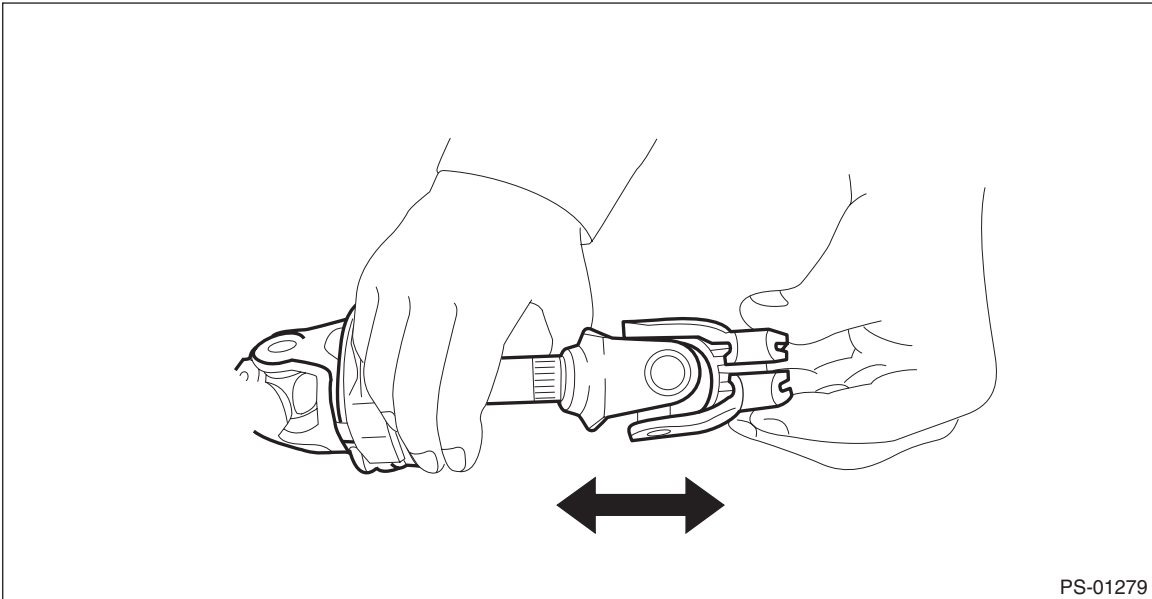
C: INSPECTION

Check for wear, damage or any other faults.

1) Check the universal joint for excessive looseness.

Service limit:

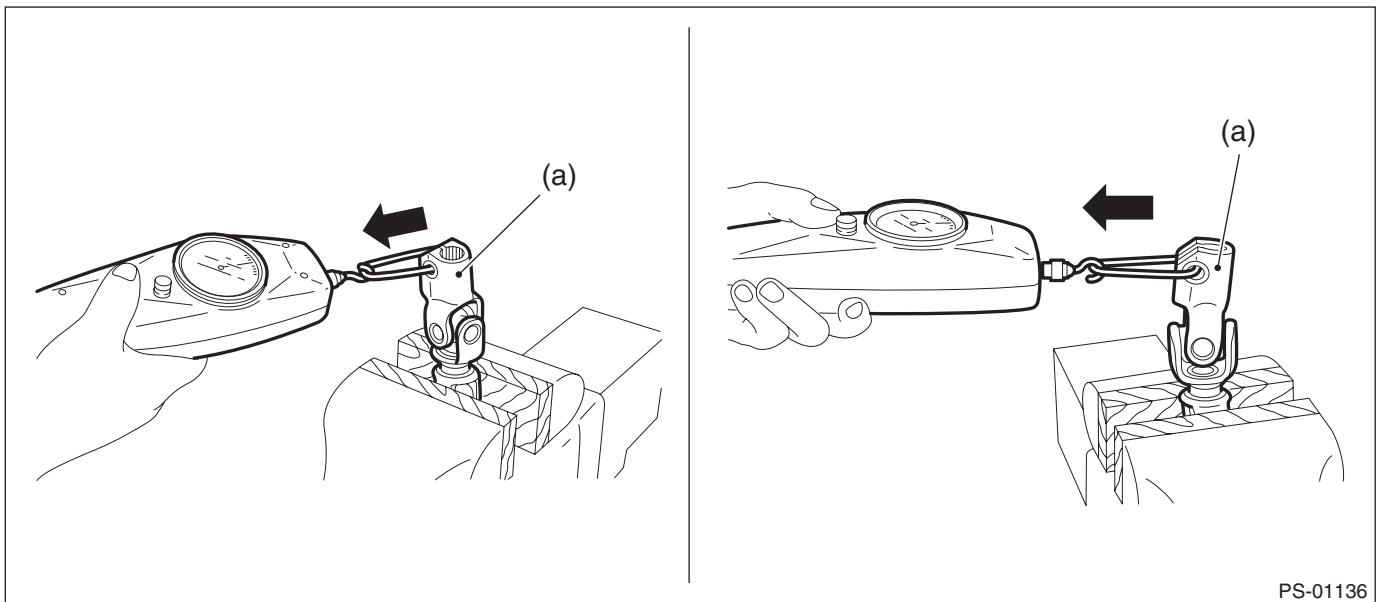
Universal joint play: 0 mm (0 in)



2) Measure the swing torque of universal joint.

(1) Place the universal joint between wooden blocks and fix it on a vise.

(2) With the yoke (a) of gearbox side facing up, measure the swing torque in two directions.



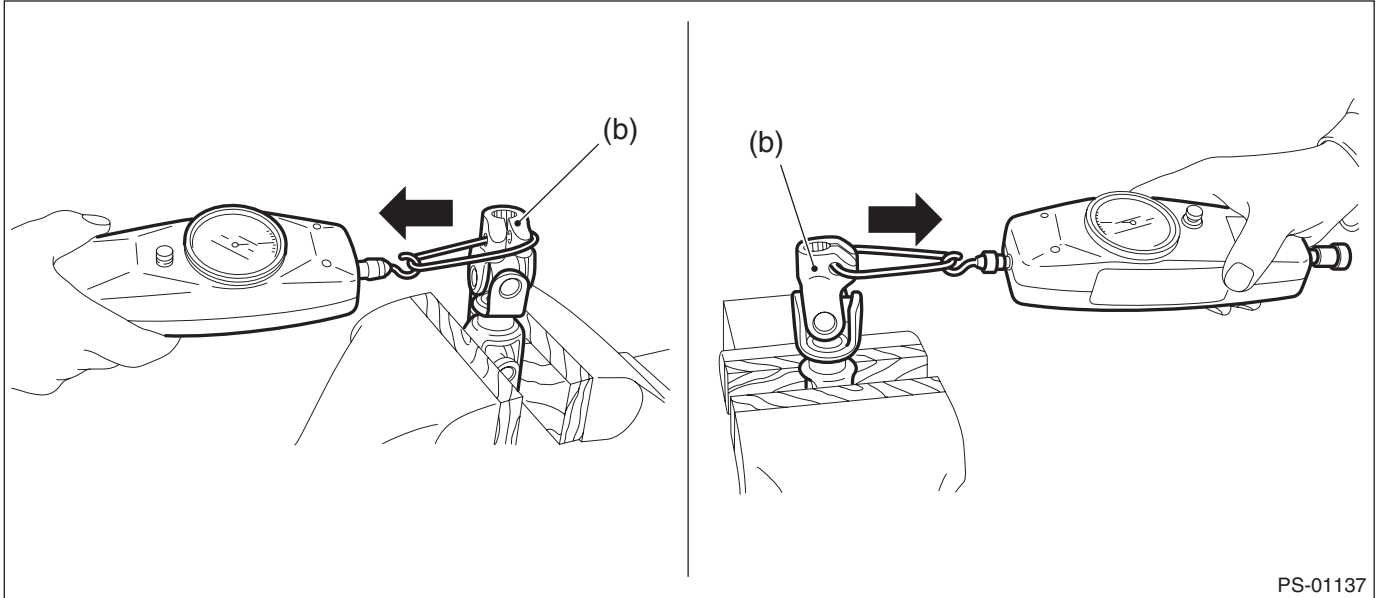
Service limit:

Maximum load: 3.8 N (0.39 kgf, 0.86 lbf) or less

Universal Joint

POWER ASSISTED SYSTEM (POWER STEERING)

(3) With the yoke (b) of steering column side facing up, measure the swing torque in two directions.



Service limit:

Maximum load: 7.3 N (0.74 kgf, 1.64 lbf) or less

(4) Replace as necessary, if it is found defective.