

General Description

VEHICLE DYNAMICS CONTROL (VDC)

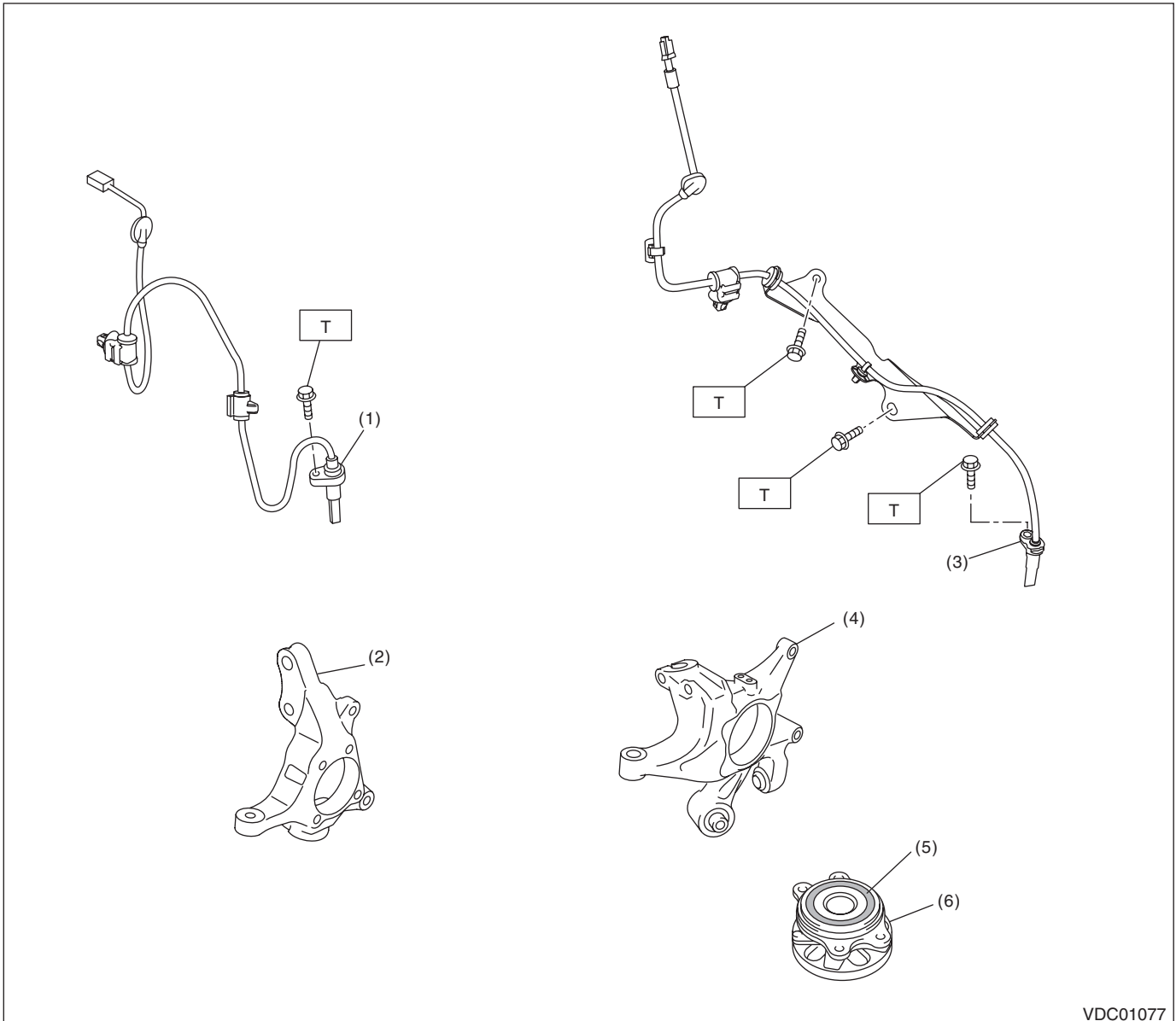
1. General Description

A: SPECIFICATION

Item			Specification or identification	
ABS wheel speed sensor	ABS wheel speed sensor gap (for reference)	Front	0.77 — 1.43 mm (0.030 — 0.056 in)	
		Rear	0.64 — 1.56 mm (0.025 — 0.061 in)	
	Identifications of harness (marks, color)	Front	Except for OBK model	S1 (Pink)
			OBK model	S2 (Blue)
		Rear	RH	S5 (Red)
			LH	S6 (Light green)
VDCCM&H/U Identification		Models without EyeSight	V6	
		Models with EyeSight	V7	

B: COMPONENT

1. ABS WHEEL SPEED SENSOR



VDC01077

- | | |
|----------------------------------|-----------------------|
| (1) Front ABS wheel speed sensor | (4) Rear axle housing |
| (2) Front axle housing | (5) Magnetic encoder |
| (3) Rear ABS wheel speed sensor | (6) Hub unit bearing |

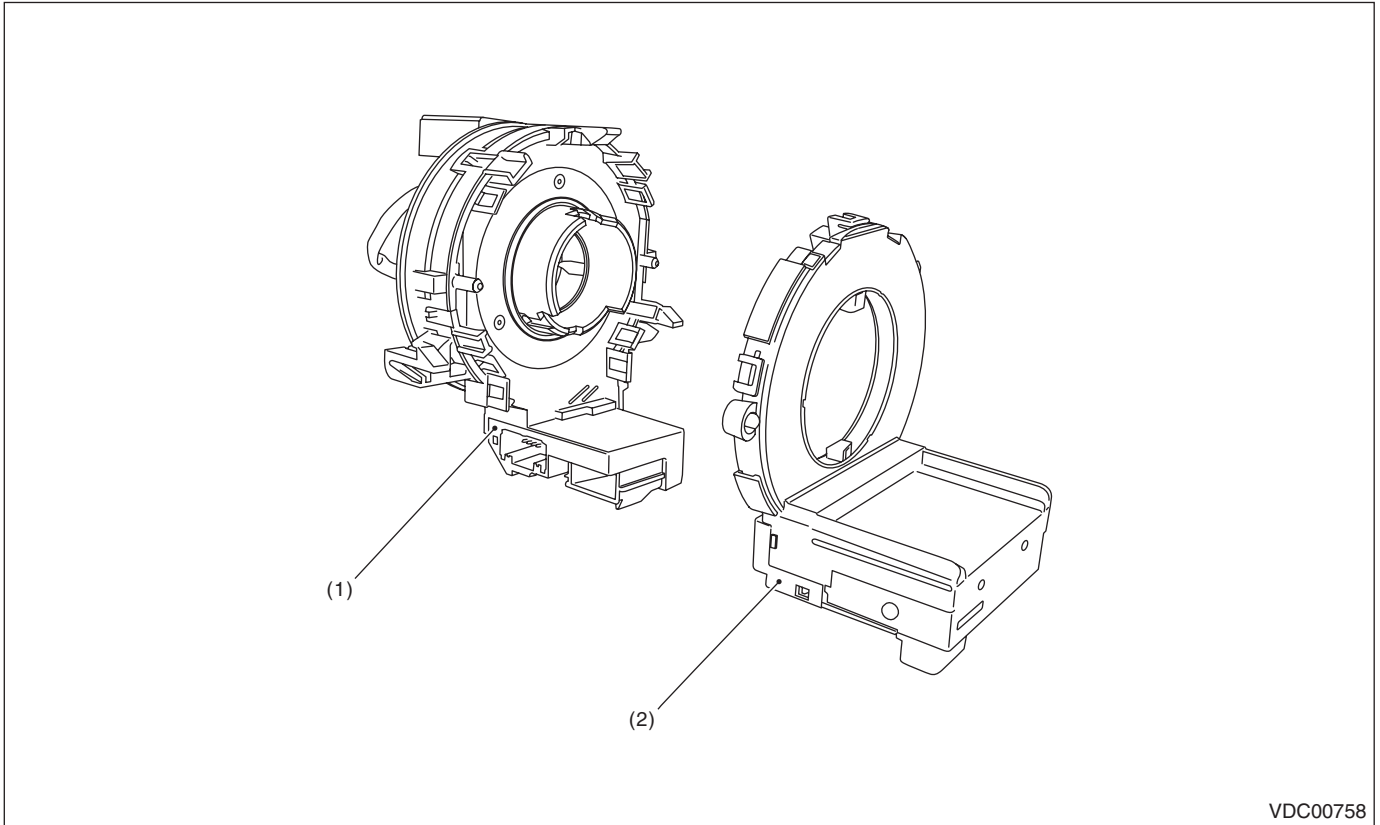
Tightening torque: N·m (kgf·m, ft·lb)

T: 7.5 (0.76, 5.5)

General Description

VEHICLE DYNAMICS CONTROL (VDC)

2. STEERING ANGLE SENSOR



VDC00758

(1) Steering roll connector

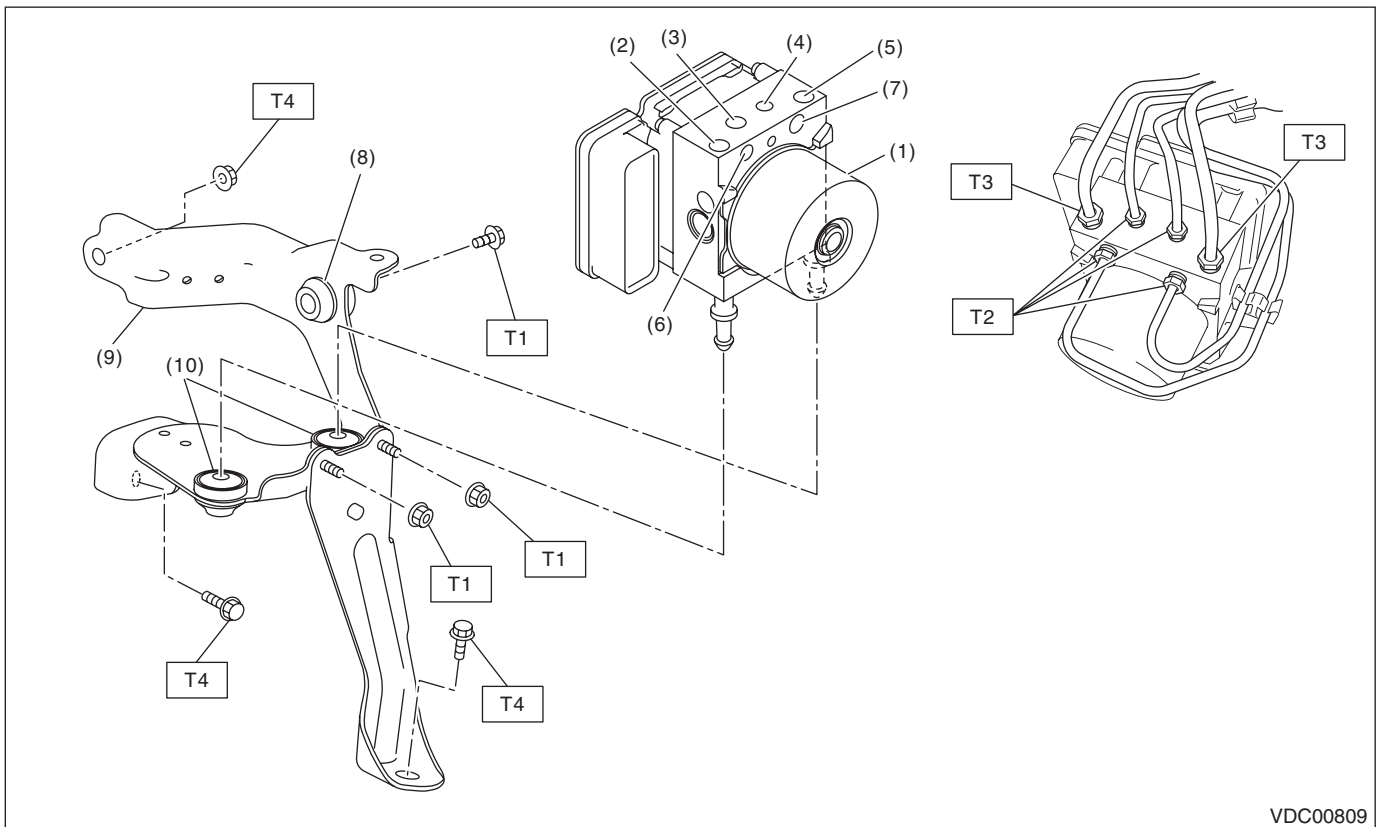
(2) Steering angle sensor

General Description

VEHICLE DYNAMICS CONTROL (VDC)

3. VDC CONTROL MODULE AND HYDRAULIC CONTROL UNIT (VDCCM&H/U)

- Models without EyeSight



- | | |
|---|---------------------|
| (1) VDC control module and hydraulic control unit (VDCCM&H/U) | (6) Rear RH outlet |
| (2) Secondary inlet | (7) Rear LH outlet |
| (3) Front LH outlet | (8) Damper & spacer |
| (4) Front RH outlet | (9) Bracket |
| (5) Primary inlet | (10) Damper |

Tightening torque: N-m (kgf-m, ft-lb)

T1: 7.5 (0.76, 5.5)

T2: 15 (1.53, 11.1)

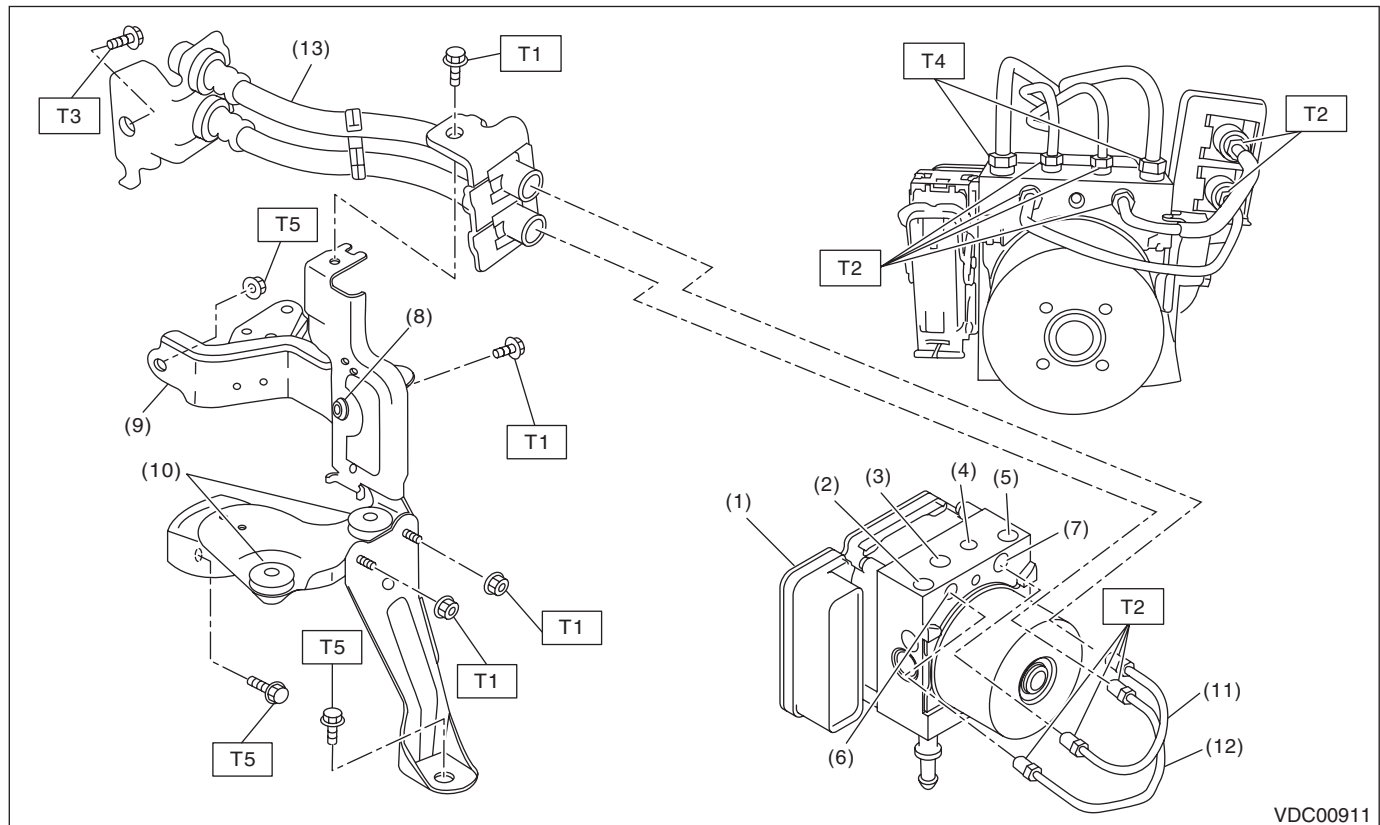
T3: 19 (1.94, 14.0)

T4: 33 (3.36, 24.3)

General Description

VEHICLE DYNAMICS CONTROL (VDC)

• Models with EyeSight



- | | |
|---|---------------------|
| (1) VDC control module and hydraulic control unit (VDCCM&H/U) | (8) Damper & spacer |
| (2) Secondary inlet | (9) Bracket |
| (3) Front LH outlet | (10) Damper |
| (4) Front RH outlet | (11) Pipe A |
| (5) Primary inlet | (12) Pipe B |
| (6) Rear RH outlet | (13) Hose ASSY |
| (7) Rear LH outlet | |

Tightening torque: N-m (kgf-m, ft-lb)

- | | |
|------------|------------------------|
| T1: | 7.5 (0.76, 5.5) |
| T2: | 15 (1.53, 11.1) |
| T3: | 18 (1.84, 13.3) |
| T4: | 19 (1.94, 14.0) |
| T5: | 33 (3.36, 24.3) |

C: CAUTION

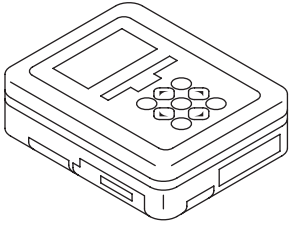
- Wear appropriate work clothing, including a helmet, protective goggles and protective shoes when performing any work.
- Remove contamination including dirt and corrosion before removal, installation or disassembly.
- Keep the disassembled parts in order and protect them from dust and dirt.
- Before disconnecting connectors of sensors or units, be sure to disconnect the ground cable from battery.
- Before removal, installation or disassembly, be sure to clarify the failure. Avoid unnecessary removal, installation, disassembly and replacement.
- Vehicle components are extremely hot after driving. Be wary of receiving burns from heated parts.
- Be sure to tighten fasteners including bolts and nuts to the specified torque.
- Place shop jacks or rigid racks at the specified points.
- When removing, installing or replacing the VDCCM&H/U, bracket, steering wheel or steering angle sensor, perform the 0 point setting for each sensor. <Ref. to VDC-20, ADJUSTMENT, VDC Control Module and Hydraulic Control Unit (VDCCM&H/U).>

General Description

VEHICLE DYNAMICS CONTROL (VDC)

D: PREPARATION TOOL

1. SPECIAL TOOL

ILLUSTRATION	TOOL NUMBER	DESCRIPTION	REMARKS
 ST1B022XU0	1B022XU0	SUBARU SELECT MONITOR III KIT	Used for setting of each function and trouble-shooting for electrical system.

2. GENERAL TOOL

TOOL NAME	REMARKS
Circuit tester	Used for measuring resistance and voltage.
Pressure gauge	Used for measuring oil pressure.
Oscilloscope	Used for measuring the sensor.