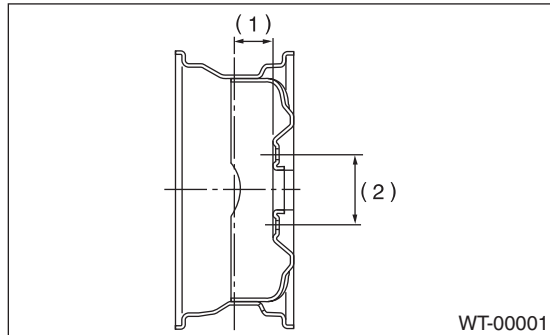


# General Description

## WHEEL AND TIRE SYSTEM

### 1. General Description

#### A: SPECIFICATION



- (1) Inset
- (2) P.C.D.

Tire size	Wheel size	Inset mm (in)	P.C.D. mm (in)	Tire inflation pressure kPa (kgf/cm <sup>2</sup> , psi)		
				Front wheel	Rear wheel	
P205/60R16 91V	16 × 6 <sup>1</sup> / <sub>2</sub> JJ 16 × 6 <sup>1</sup> / <sub>2</sub> J	48 (1.89)	100 (3.94)	230 (2.3, 33)	220 (2.2, 32)	
P215/50R17 90V	17 × 7 <sup>1</sup> / <sub>2</sub> J					
P225/50R17 93V	17 × 7 <sup>1</sup> / <sub>2</sub> J					
P225/45R18 91V	18 × 7 <sup>1</sup> / <sub>2</sub> J					
P215/70R16 99S	16 × 6 <sup>1</sup> / <sub>2</sub> JJ	48 (1.89)		220 (2.2, 32)	210 (2.1, 31)	
P225/60R17 98T	17 × 7J					
T135/80R16 101M	16 × 4T	20 (0.79)		-	-	420 (4.2, 60)
T135/70R17 102M	17 × 4T					
T145/80R17 97M						

#### NOTE:

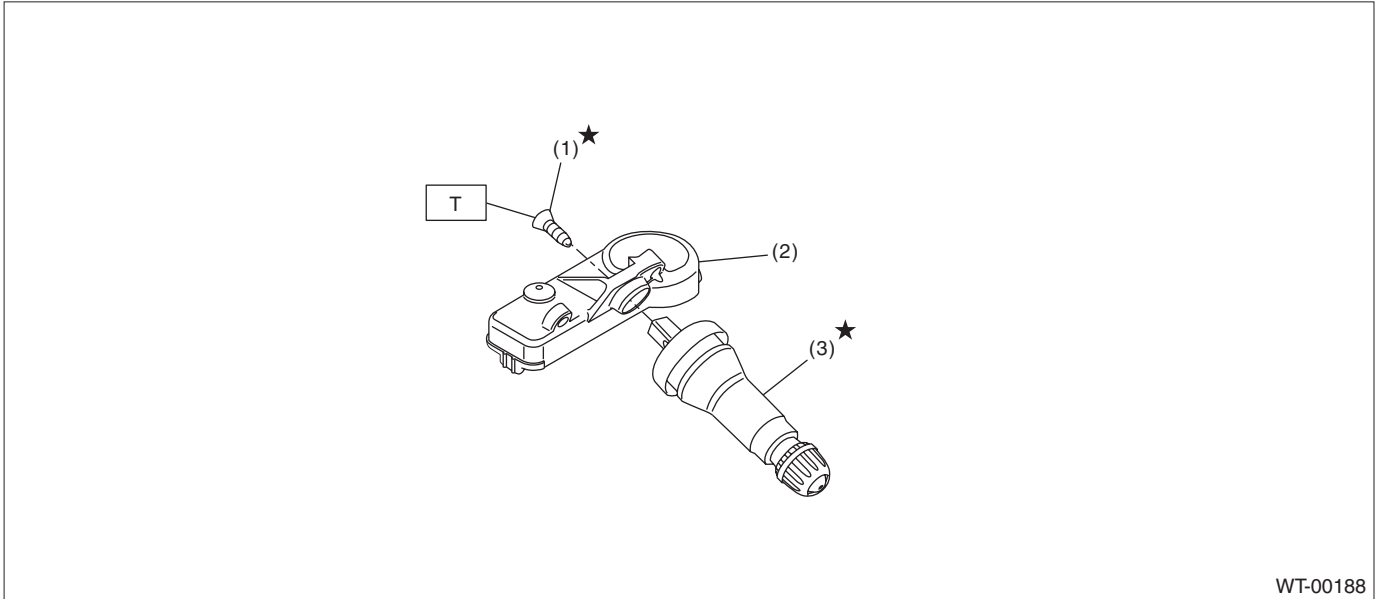
Size and inflation pressure of the standard equipment tire and spare tire for emergency are described on the "Tire inflation pressure" label attached to the body side of the driver's door.

#### 1. SERVICE DATA

Part	Axial runout	Radial runout
Steel wheel	1.5 mm (0.059 in)	
Aluminum wheel	1.0 mm (0.039 in)	

Wheel balancing	Standard	Service limit
Dynamic unbalance	5 g (0.18 oz) or less	

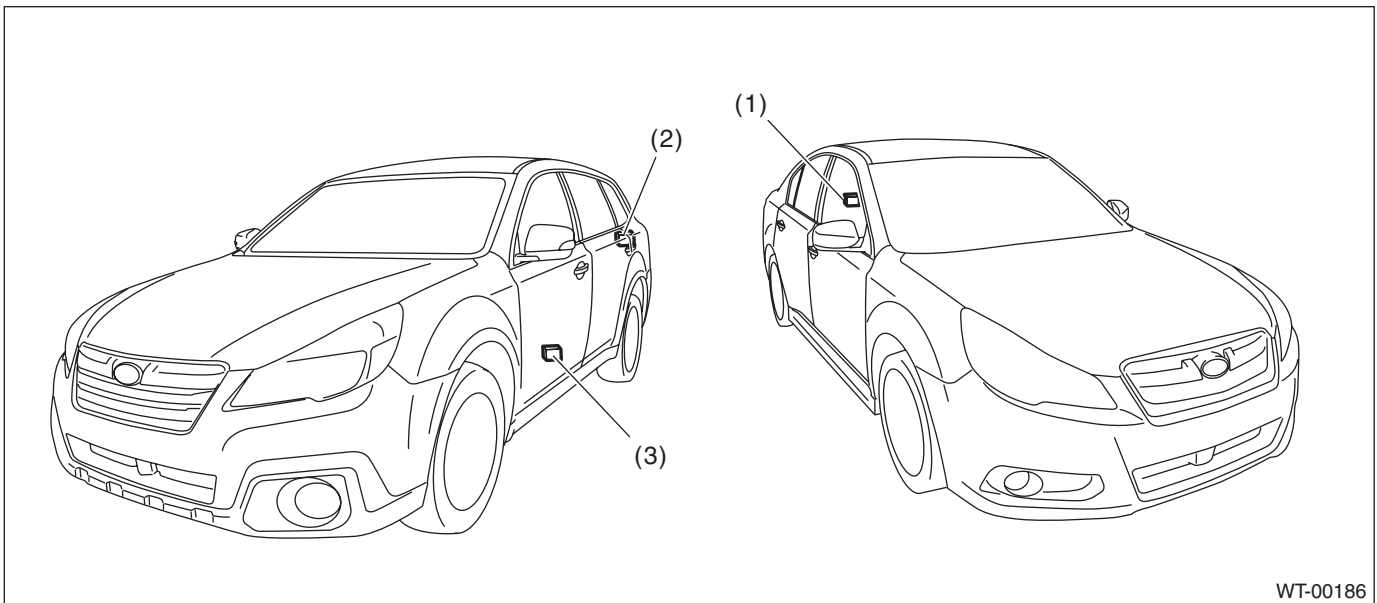
## B: COMPONENT



WT-00188

- (1) Screw
- (2) Transmitter (snap in type)
- (3) Valve

**Tightening torque: N-m (kgf-m, ft-lb)**  
**T: 1.4 (0.14, 1.0)**



WT-00186

- (1) TPMS & keyless entry control module (sedan model)
- (2) TPMS & keyless entry control module (OUTBACK, model without push button start)
- (3) TPMS CM (OUTBACK, model without push button start)

## C: PREPARATION TOOL

### 1. GENERAL TOOL

TOOL NAME	REMARKS
Air pressure gauge	Used for measuring tire air pressure.
Dial gauge	Used for measuring wheel runout.
Wheel balancer	Used for adjusting wheel balance.