

8. Power Amplifier

A: REMOVAL

NOTE:

harman/kardon® audio system only.

1) Disconnect the ground cable from battery.

NOTE:

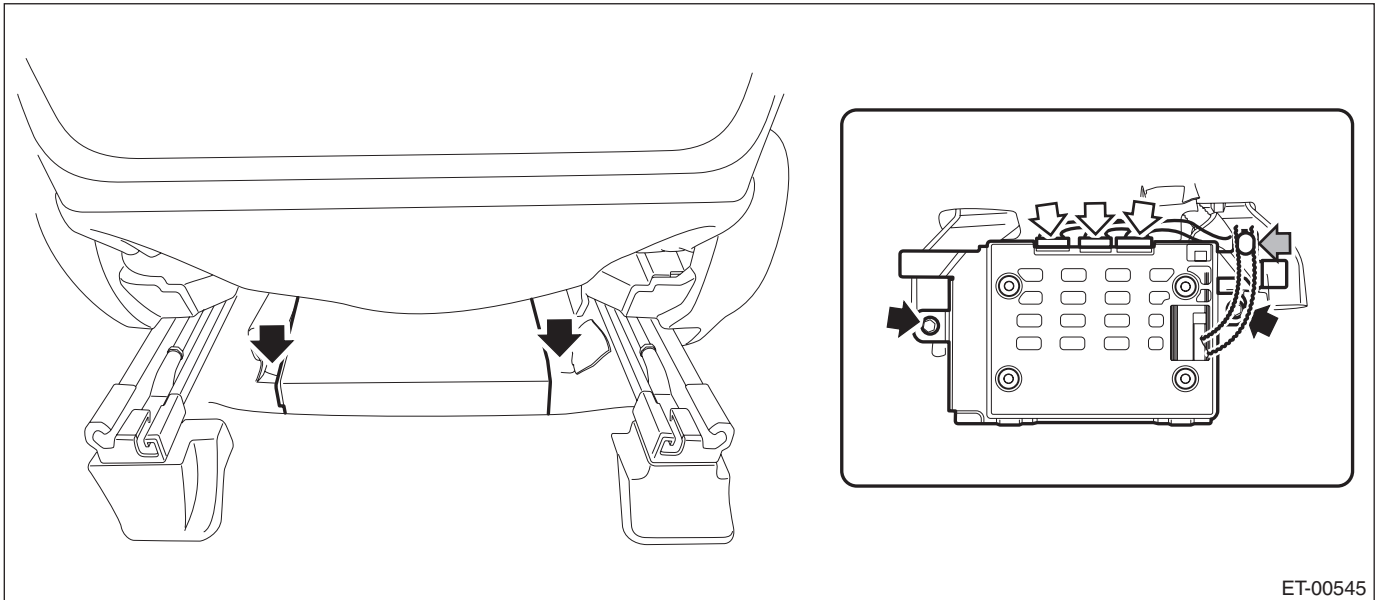
For the power seat, move the seat before removing the battery ground terminal.

2) Move the passenger's seat to the front-most position.

3) Remove the power amplifier.

(1) Disconnect the harness connector.

(2) Remove the nut and remove the power amplifier.



ET-00545

B: INSTALLATION

Install each part in the reverse order of removal.

Tightening torque:

Power amplifier: 4.5 N·m (0.46 kgf-m, 3.32 ft-lb)