

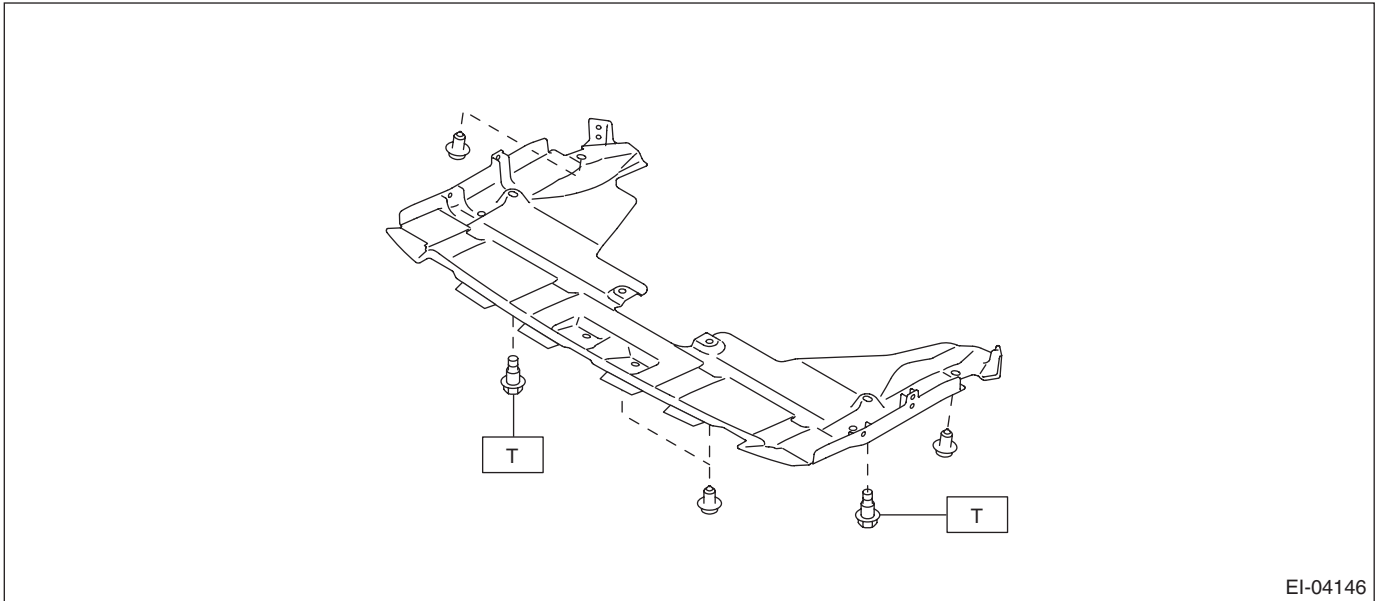
General Description

EXTERIOR/INTERIOR TRIM

1. General Description

A: COMPONENT

1. FRONT UNDER COVER

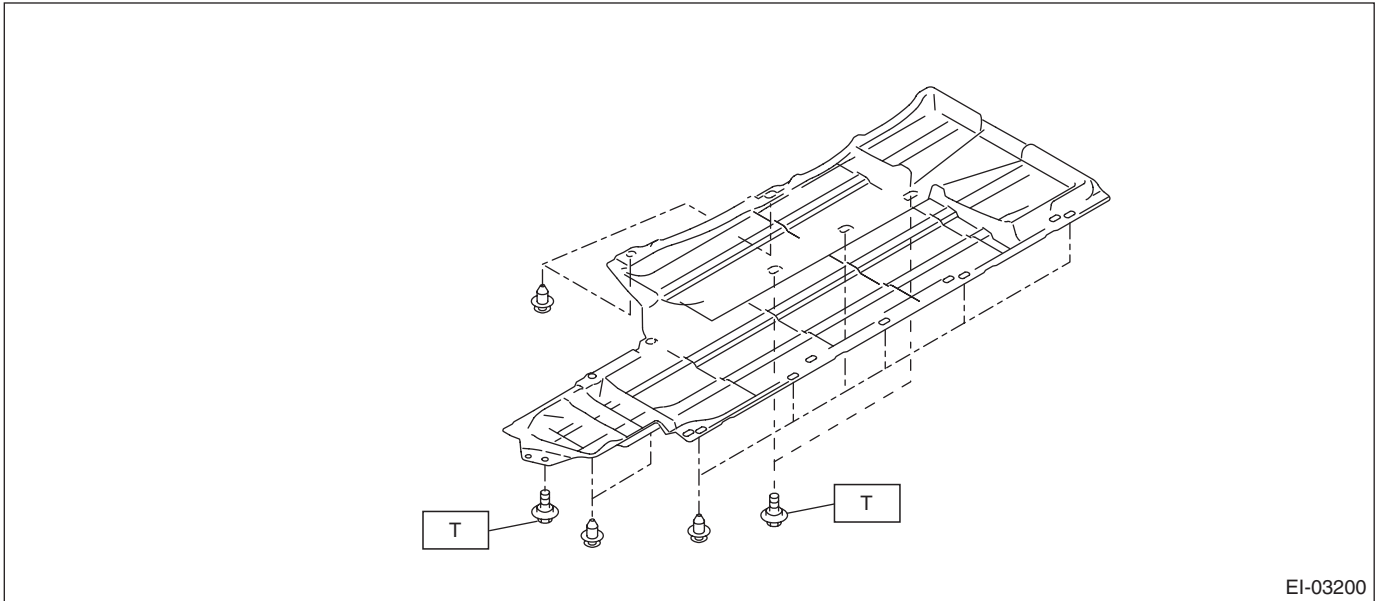


EI-04146

Tightening torque: N·m (kgf·m, ft·lb)

T: 17.5 (1.78, 12.9)

2. FLOOR UNDER PROTECTOR



EI-03200

Tightening torque: N·m (kgf·m, ft·lb)

T: 7.5 (0.76, 5.5)

3. FUEL TANK PROTECTOR

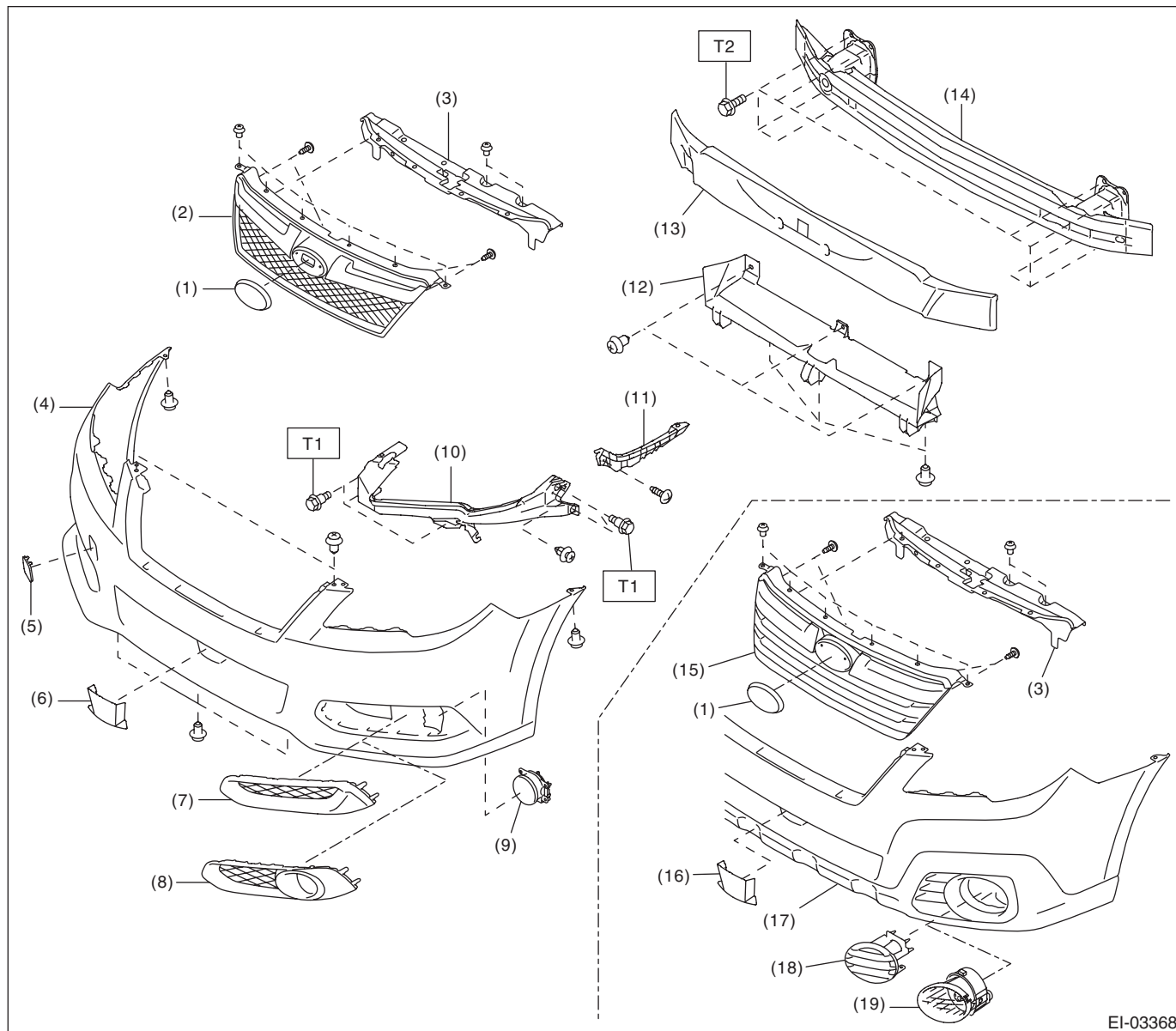
NOTE:

- For the fuel tank protector of H4 model, refer to “COMPONENT” of “General Description” in the “FU(H4DO)” section. <Ref. to FU(H4DO)-7, FUEL TANK, COMPONENT, General Description.>
- For the fuel tank protector of H6 model, refer to “COMPONENT” of “General Description” in the “FU(H6DO)” section. <Ref. to FU(H6DO)-11, FUEL TANK, COMPONENT, General Description.>

General Description

EXTERIOR/INTERIOR TRIM

4. FRONT BUMPER



EI-03368

- | | | |
|-------------------------------------|--|--|
| (1) Front ornament | (9) Fog light ASSY (sedan model) | (17) Front bumper face (OUTBACK model) |
| (2) Front grille ASSY (sedan model) | (10) Bracket corner front | (18) Bumper cover (OUTBACK model) |
| (3) Grille bracket | (11) Bracket side front UPR | (19) Fog light ASSY (OUTBACK model) |
| (4) Front bumper face (sedan model) | (12) Bracket center LWR front | |
| (5) Front hook cover | (13) Energy absorber foam front | |
| (6) Bumper cover CTR (sedan model) | (14) Beam COMPL front | |
| (7) Bumper cover (sedan model) | (15) Front grille ASSY (OUTBACK model) | |
| (8) Fog light cover (sedan model) | (16) Bumper cover CTR (OUTBACK model) | |

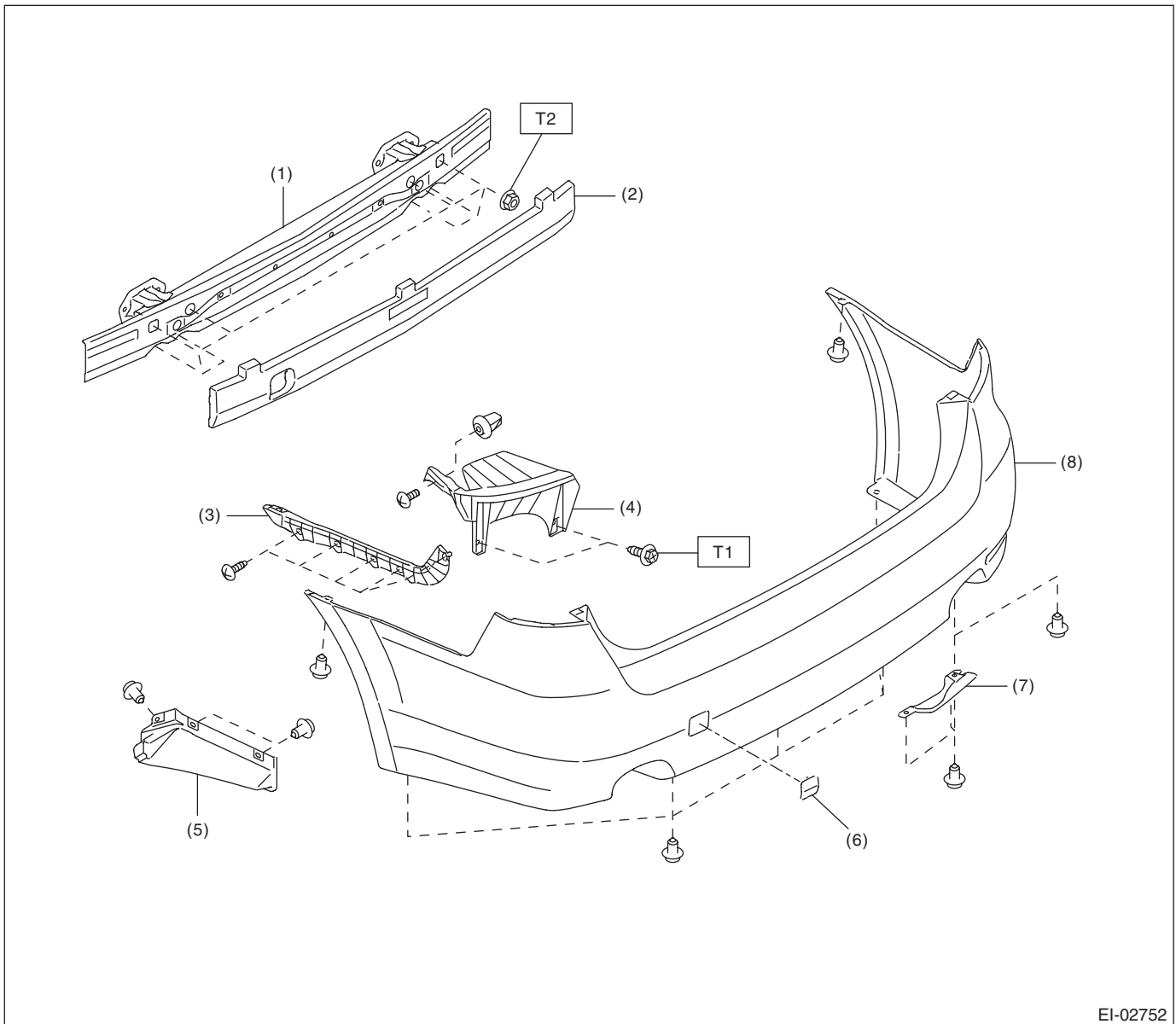
Tightening torque: N-m (kgf-m, ft-lb)

T1: 7.5 (0.76, 5.5)

T2: 32 (3.26, 23.6)

5. REAR BUMPER

- Sedan model



EI-02752

- | | |
|-------------------------------|---------------------------|
| (1) Beam COMPL rear | (5) Bracket side rear LWR |
| (2) Energy absorber foam rear | (6) Rear hook cover |
| (3) Bracket side rear UPR | (7) Bumper cover rear |
| (4) Bracket corner rear | (8) Rear bumper face |

Tightening torque: N·m (kgf·m, ft·lb)

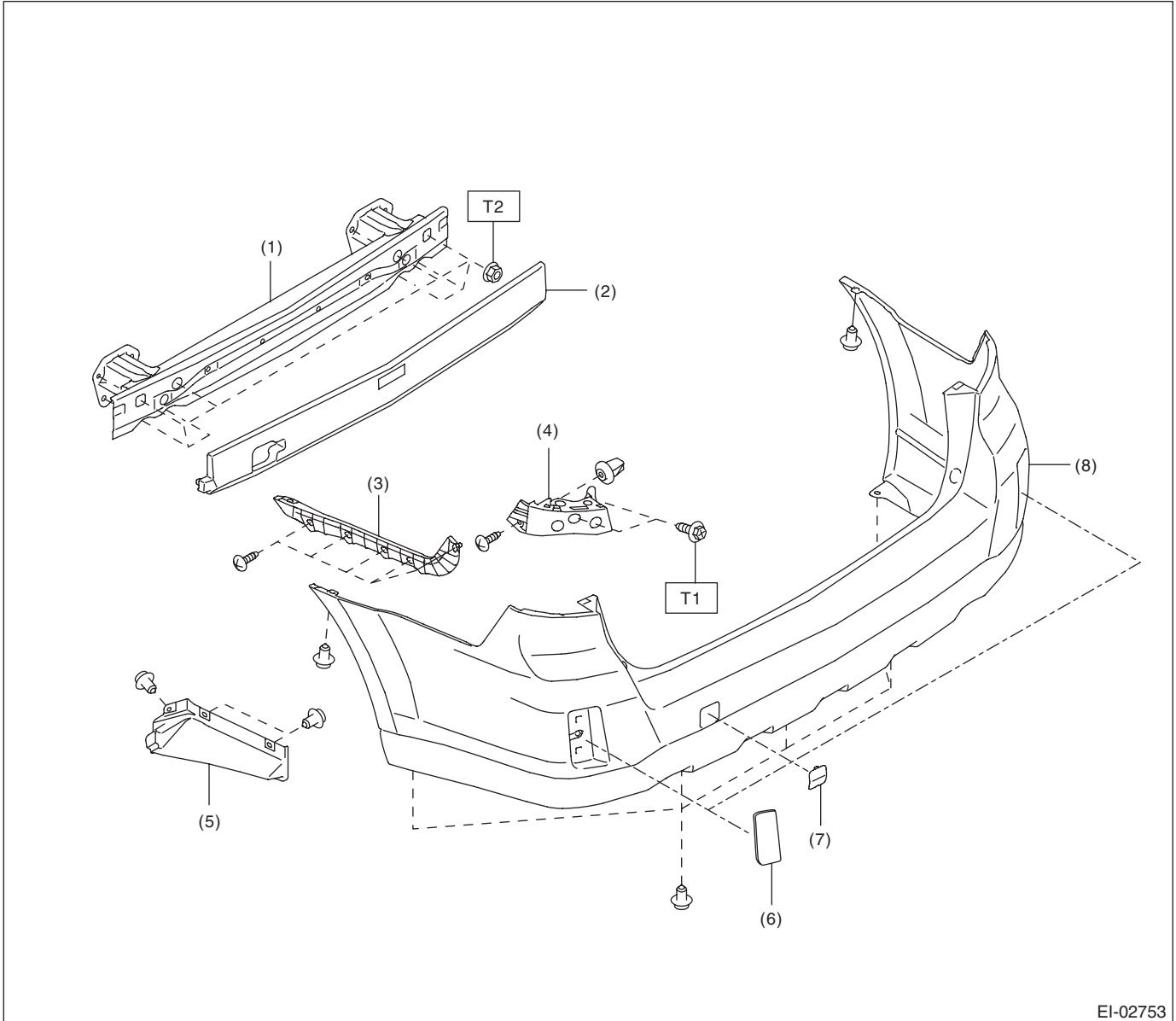
T1: 7.5 (0.76, 5.5)

T2: 45 (4.59, 33.2)

General Description

EXTERIOR/INTERIOR TRIM

- OUTBACK model



EI-02753

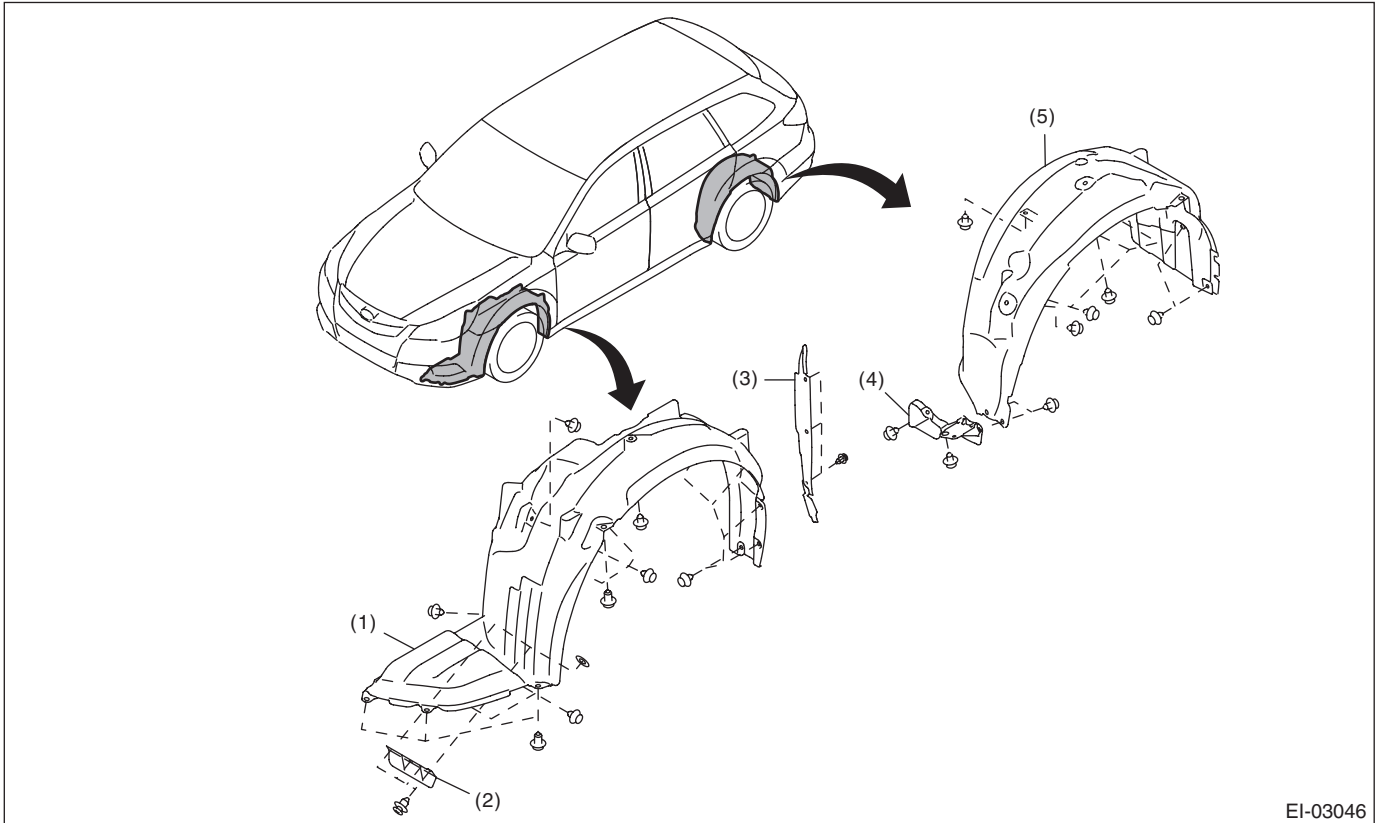
- | | |
|-------------------------------|---------------------------|
| (1) Beam COMPL rear | (5) Bracket side rear LWR |
| (2) Energy absorber foam rear | (6) Reflex reflector |
| (3) Bracket side rear UPR | (7) Rear hook cover |
| (4) Bracket corner rear | (8) Rear bumper face |

Tightening torque: N·m (kgf·m, ft·lb)

T1: 7.5 (0.76, 5.5)

T2: 45 (4.59, 33.2)

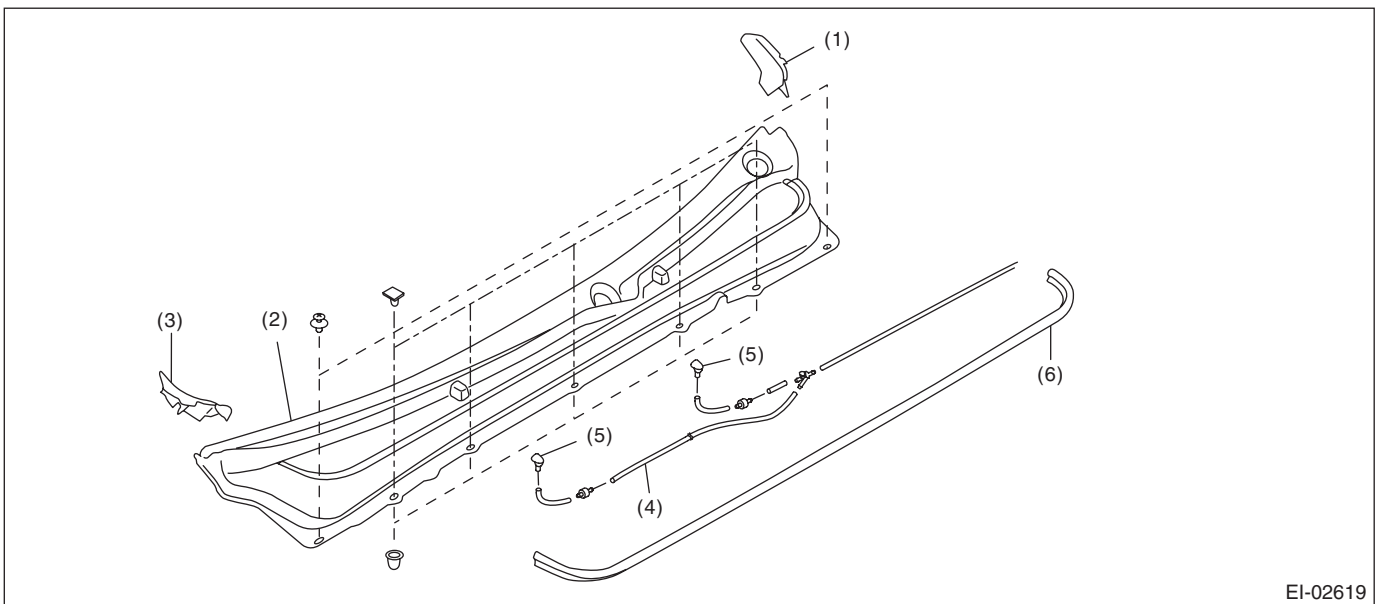
6. MUD GUARD



EI-03046

- | | | |
|--------------------------|-------------------------|--------------------|
| (1) Front mud guard | (3) Fender cover lower | (5) Rear mud guard |
| (2) Front air flap plate | (4) Rear air flap plate | |

7. COWL PANEL



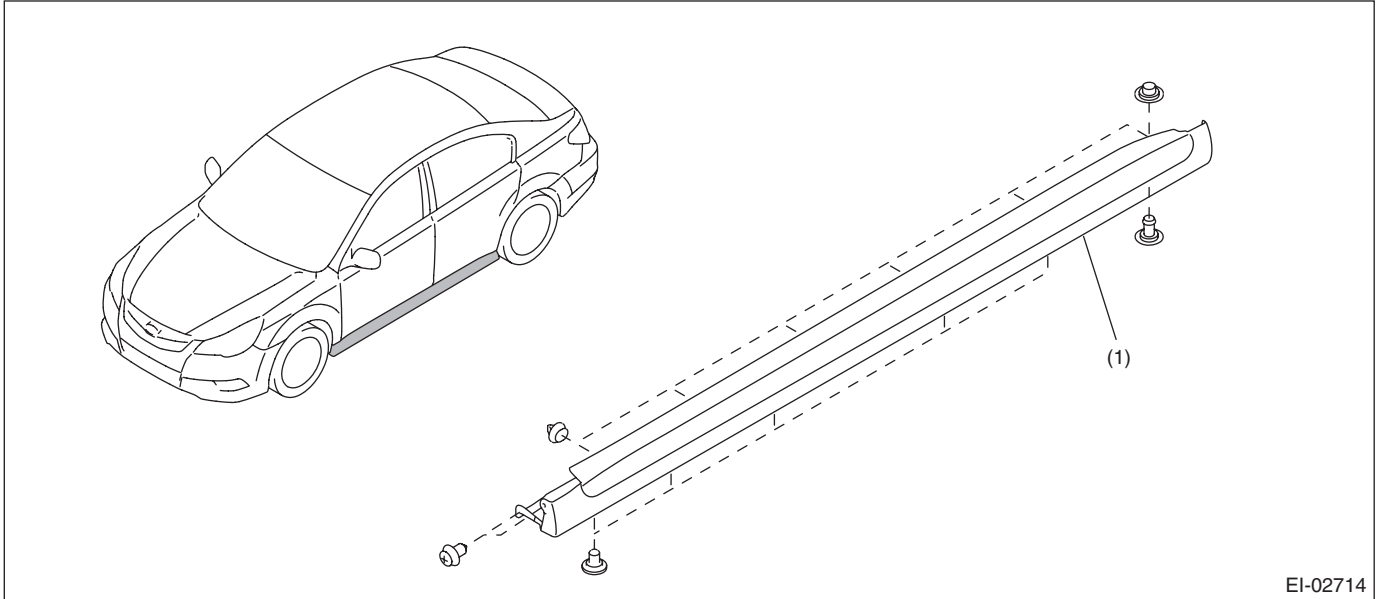
EI-02619

- | | | |
|------------------------|------------------------|---------------------|
| (1) Cowl panel side LH | (3) Cowl panel side RH | (5) Washer nozzle |
| (2) Cowl panel | (4) Washer hose | (6) Cowl panel seal |

General Description

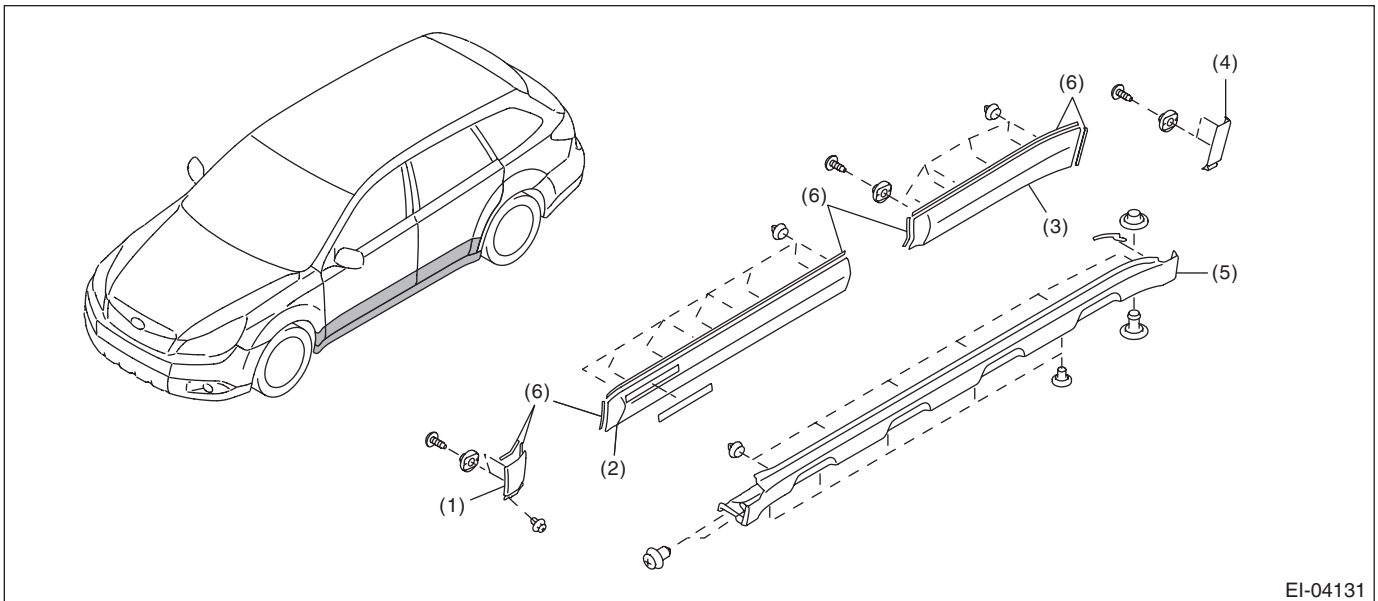
EXTERIOR/INTERIOR TRIM

8. SIDE GARNISH



EI-02714

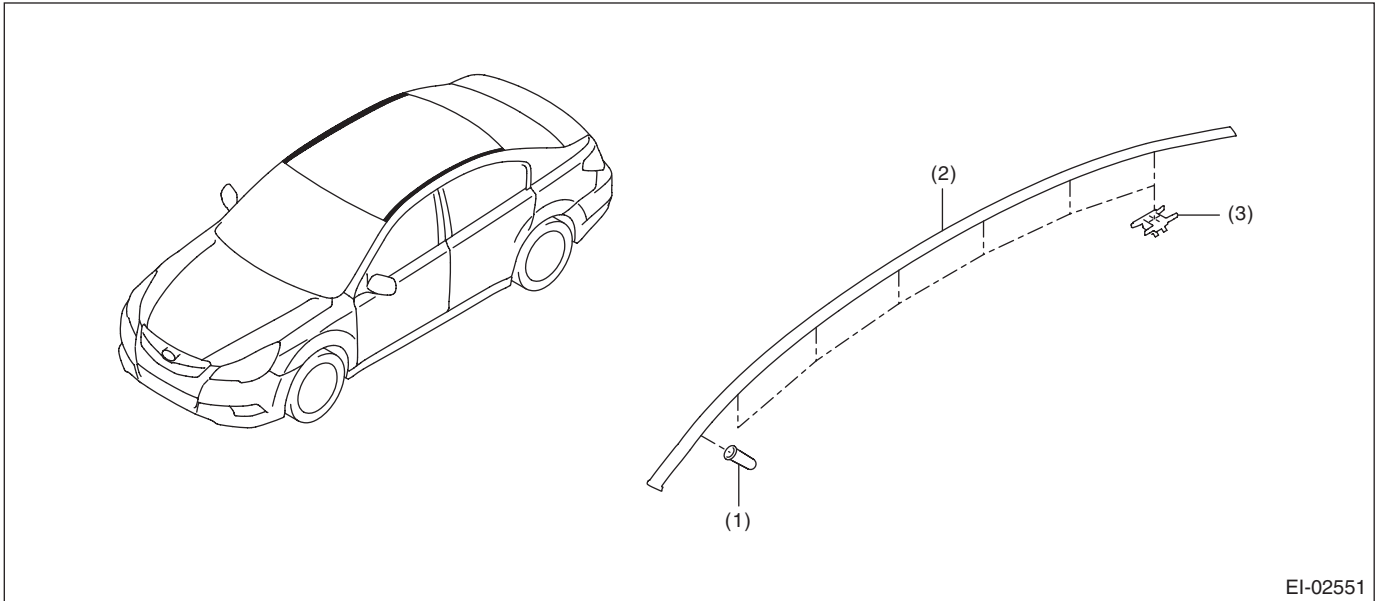
- (1) Side sill garnish ASSY (sedan model)



EI-04131

- (1) Garnish ASSY front fender (OUTBACK model)
- (2) Garnish ASSY front door (OUTBACK model)
- (3) Garnish ASSY rear door (OUTBACK model)
- (4) Garnish ASSY rear quarter (OUTBACK model)
- (5) Side sill garnish ASSY (OUTBACK model)
- (6) Double-sided tape

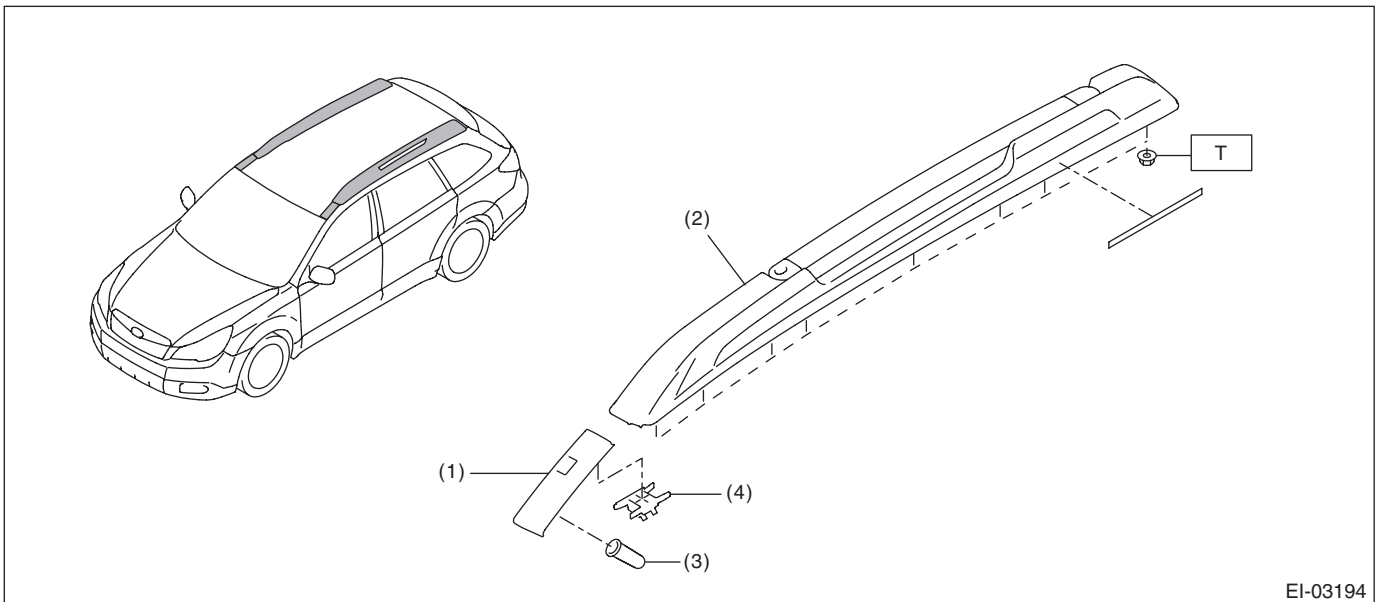
9. ROOF MOLDING



EI-02551

- (1) Rivet
- (2) Roof molding
- (3) Clip

10. ROOF RAIL



EI-03194

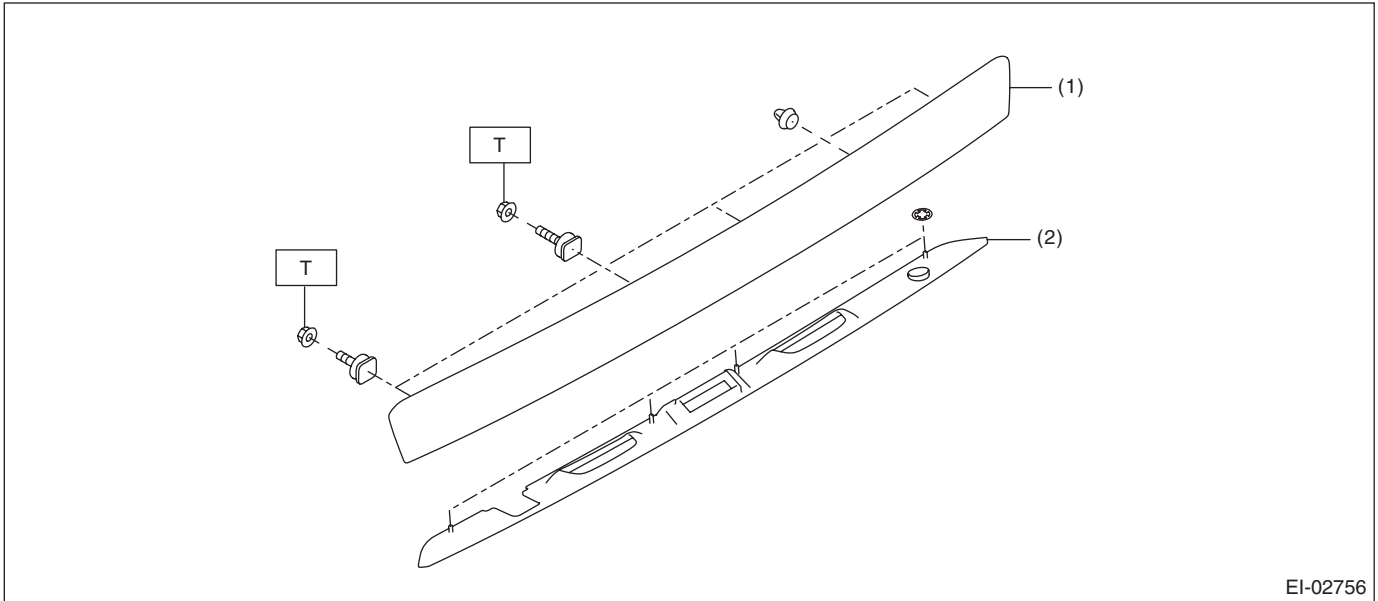
- (1) Roof molding
- (2) Roof rail ASSY
- (3) Rivet
- (4) Clip

Tightening torque: N·m (kgf·m, ft·lb)
T: 7.5 (0.76, 5.5)

General Description

EXTERIOR/INTERIOR TRIM

11. TRUNK LID GARNISH

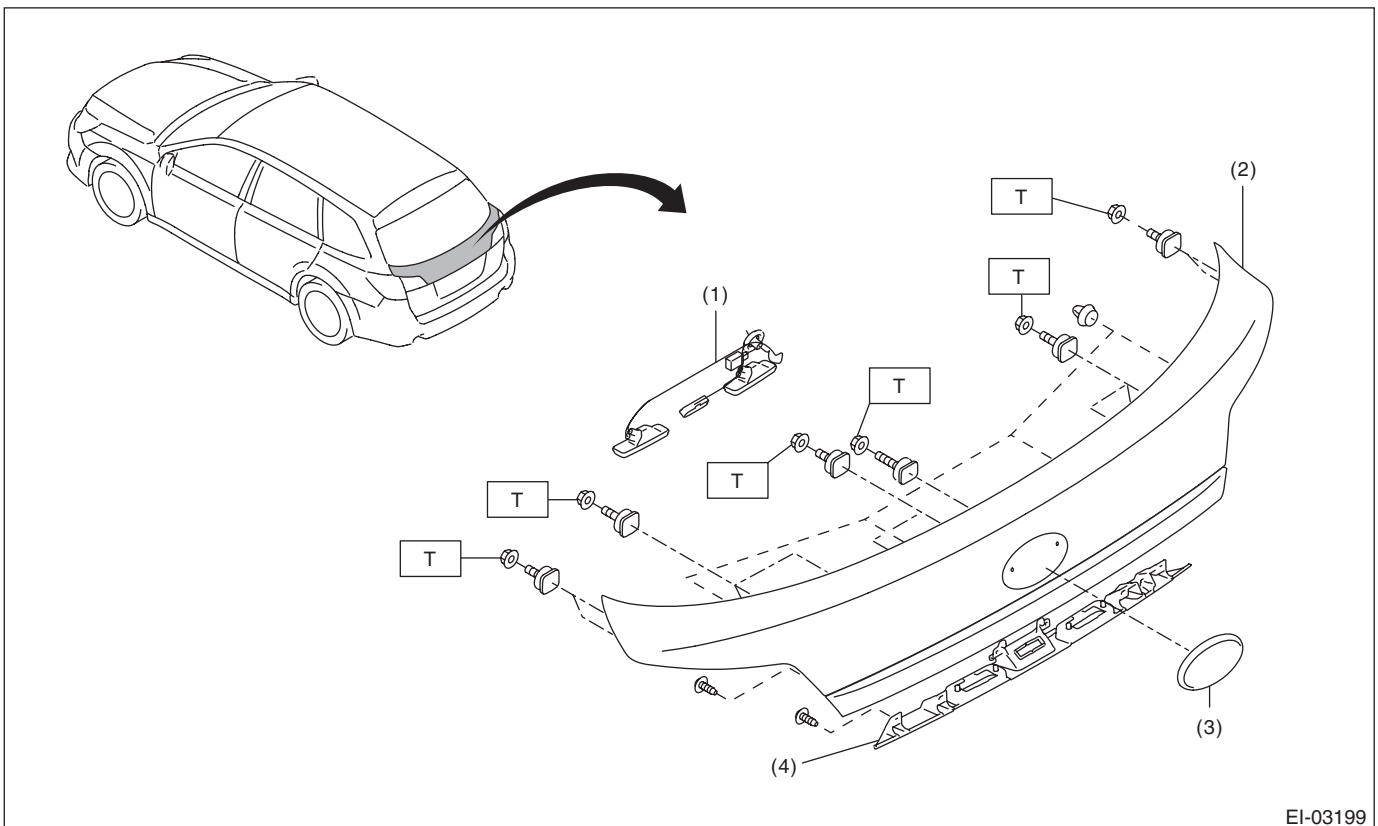


EI-02756

- (1) Trunk lid garnish
- (2) Undercover-trunk lid garnish

Tightening torque: N-m (kgf-m, ft-lb)
T: 4.5 (0.46, 3.3)

12. REAR GATE GARNISH

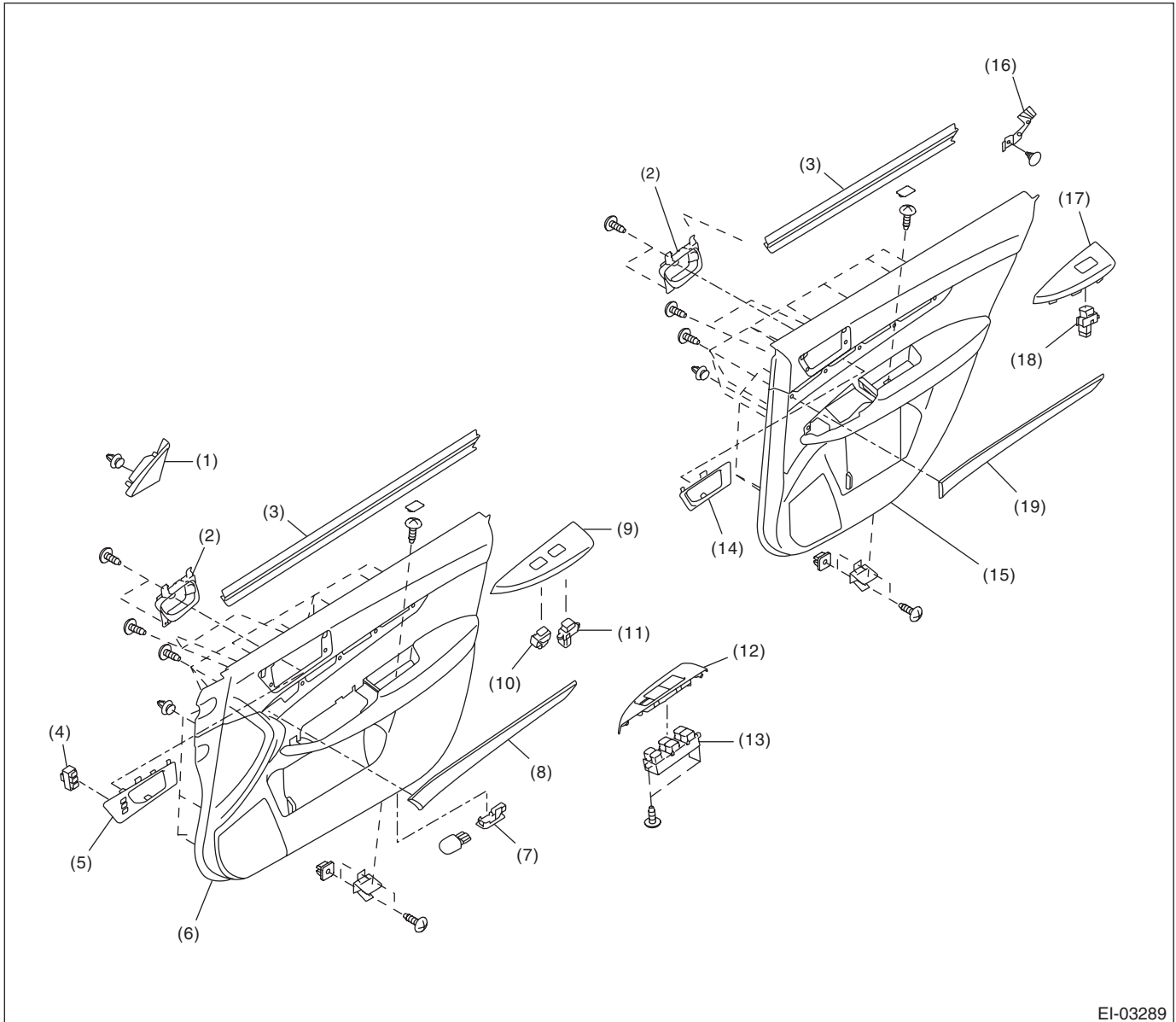


EI-03199

- (1) License light ASSY and rear gate opener ASSY harness.
- (2) Rear gate garnish
- (3) Ornament
- (4) Garnish LWR

Tightening torque: N-m (kgf-m, ft-lb)
T: 4.5 (0.46, 3.3)

13.DOOR TRIM



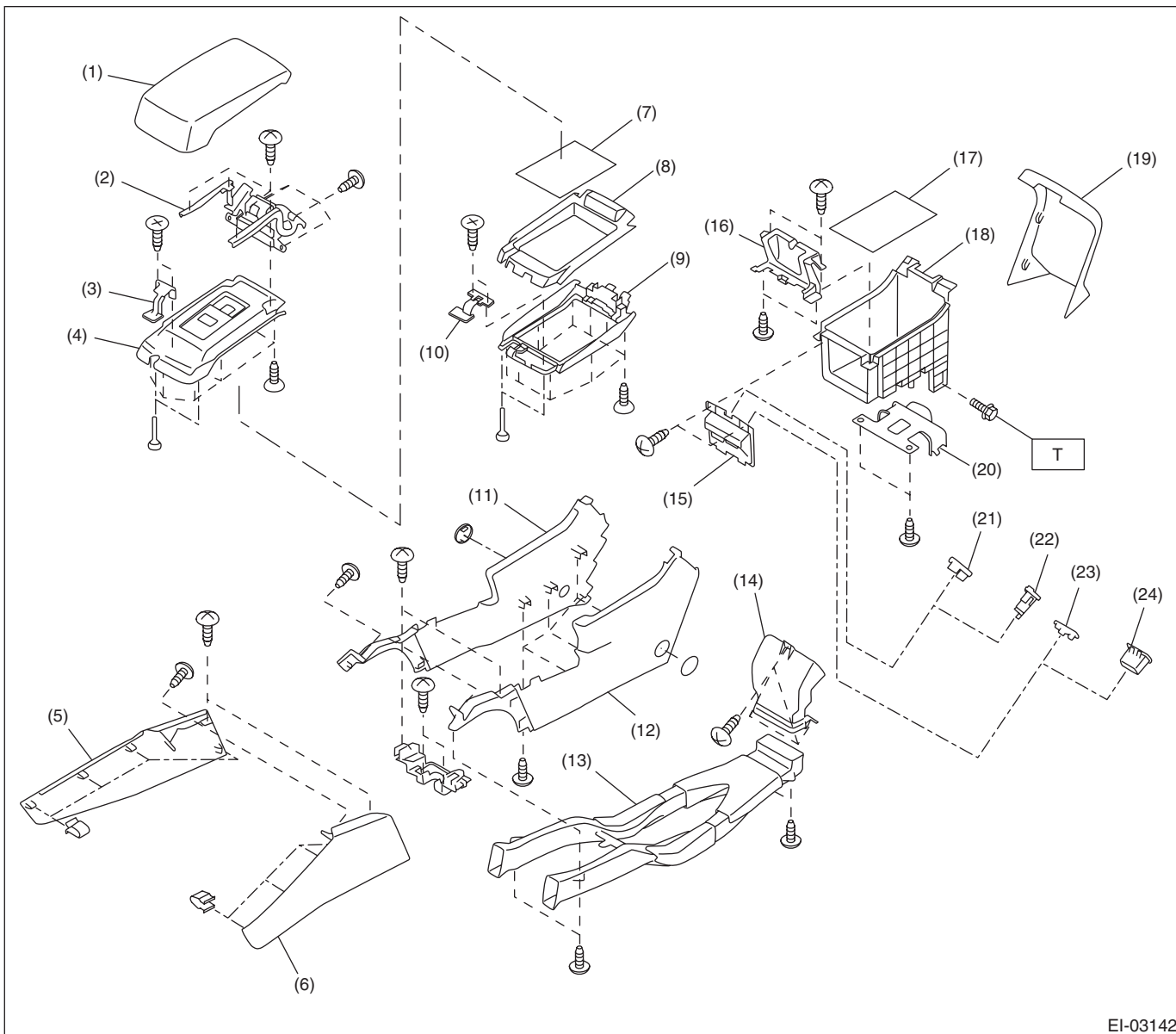
EI-03289

- | | | |
|--|---|--|
| (1) Gusset cover front | (8) Front door ornament panel | (15) Rear door trim |
| (2) Inner remote ASSY | (9) Power window switch panel front RH | (16) Rear door cover upper |
| (3) Weather strip inner | (10) Door lock switch ASSY | (17) Power window switch panel rear |
| (4) Power seat memory switch ASSY (only for seat with memory function) | (11) Power window sub-switch ASSY front | (18) Power window sub-switch ASSY rear |
| (5) Front door inner remote cover | (12) Power window switch panel front LH | (19) Rear door ornament panel |
| (6) Front door trim ASSY | (13) Power window main switch ASSY | |
| (7) Door step light | (14) Rear door inner remote cover | |

General Description

EXTERIOR/INTERIOR TRIM

14. CONSOLE BOX



EI-03142

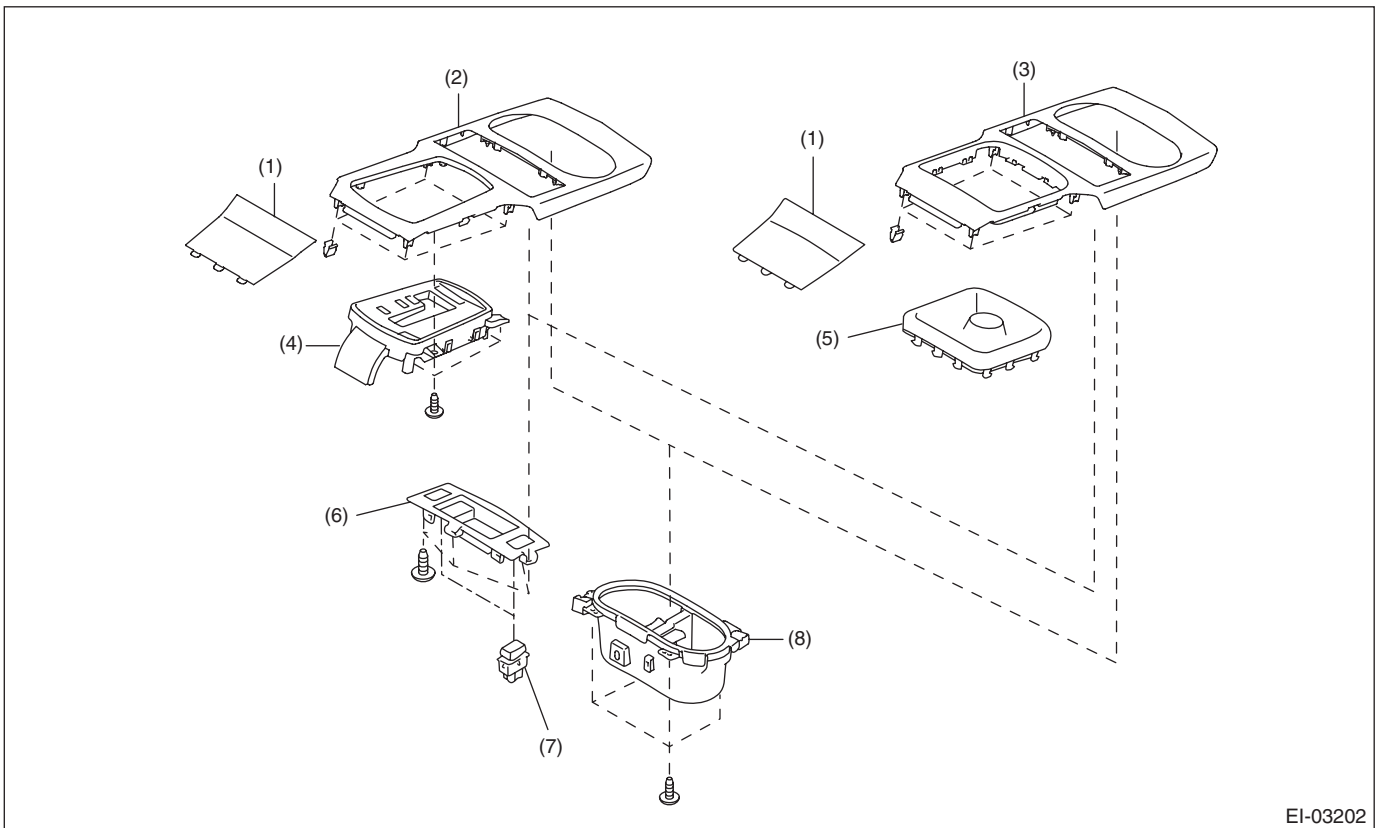
- | | | |
|--------------------------------------|------------------------------|-------------------------|
| (1) Console lid COMPL | (10) Lid lock LWR | (19) Console rear cover |
| (2) Console lid hinge COMPL | (11) Console box LWR RH | (20) Console bracket |
| (3) Lid lock UPR | (12) Console box LWR LH | (21) Cover A |
| (4) Lid inner UPR | (13) Center console duct | (22) Accessory socket |
| (5) Console front side cover ASSY RH | (14) Rear heater grille ASSY | (23) Cover B |
| (6) Console front side cover ASSY LH | (15) Pocket case | (24) AUX unit |
| (7) Mat (lid LWR) | (16) Cover center | |
| (8) Lid inner LWR | (17) Mat (pocket) | |
| (9) Lid outer LWR | (18) Console pocket | |

Tightening torque: N-m (kgf-m, ft-lb)

T: 6.5 (0.66, 4.8)

General Description

EXTERIOR/INTERIOR TRIM



EI-03202

- (1) Center pocket mat
- (2) Front cover AT
- (3) Front cover MT

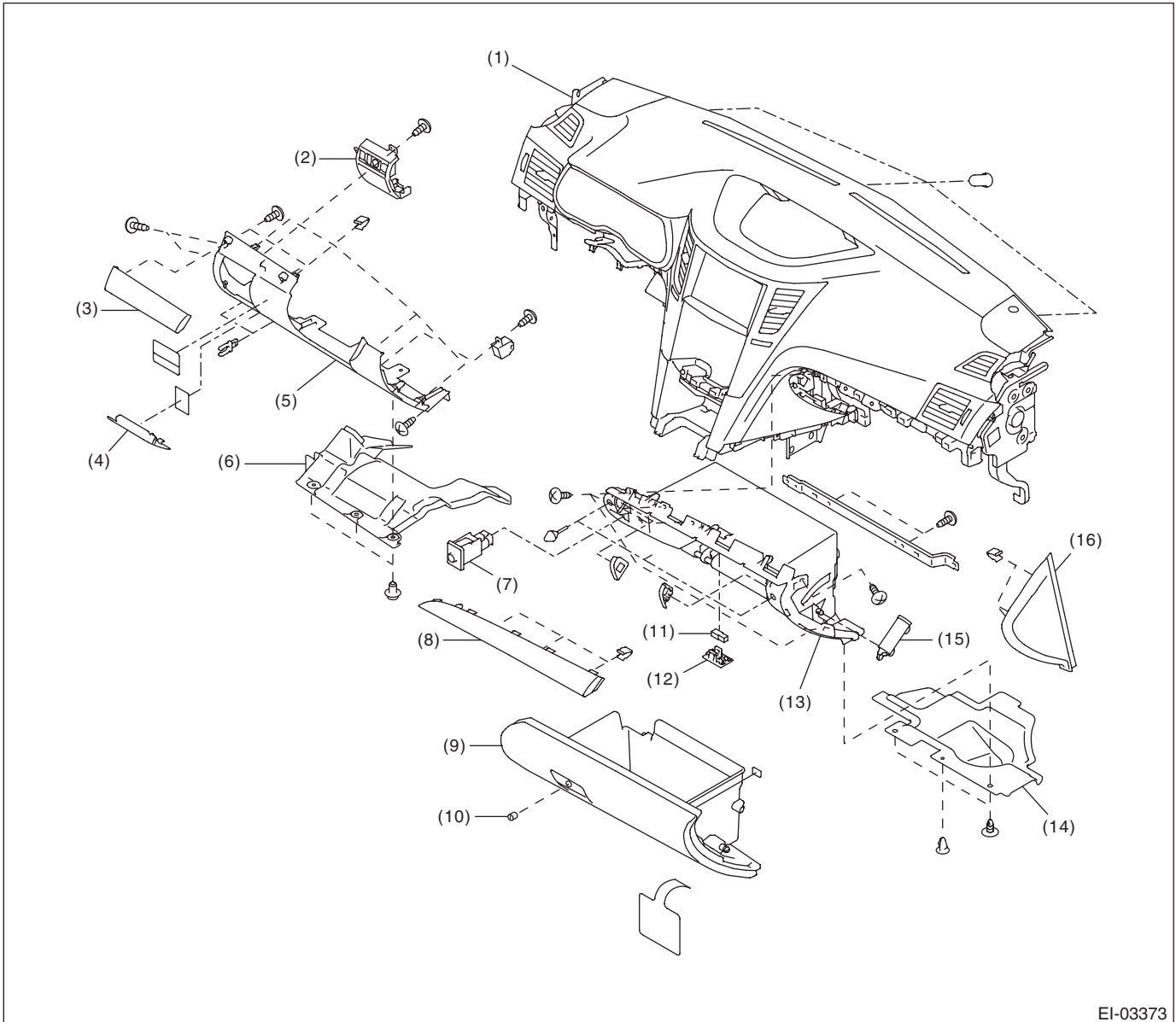
- (4) Indicator ASSY AT
- (5) Shift boot (MT model)
- (6) Switch case

- (7) Seat heater switch
- (8) Cup holder ASSY

General Description

EXTERIOR/INTERIOR TRIM

15. INSTRUMENT PANEL

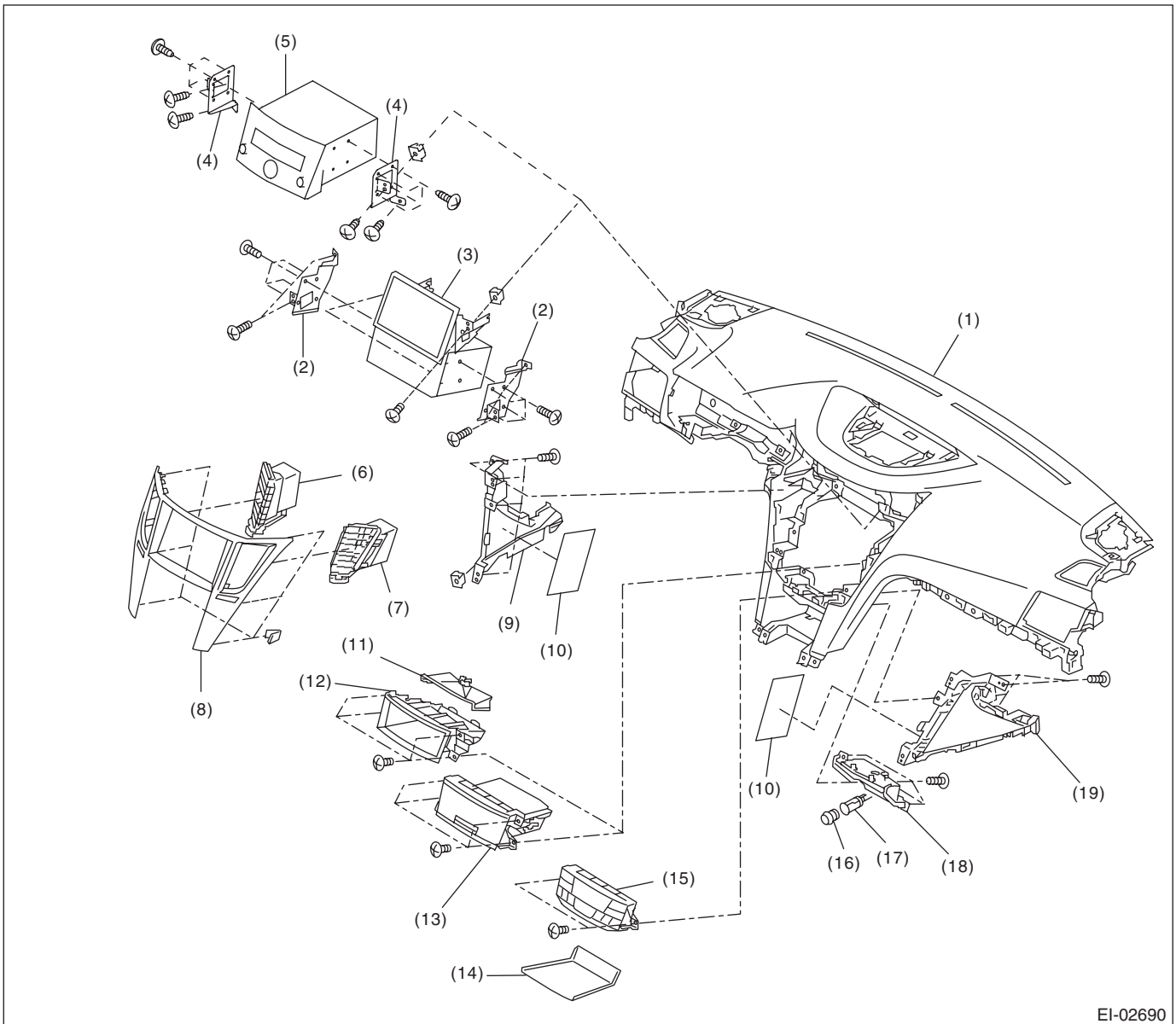


EI-03373

- | | | |
|--|--------------------------------|----------------------------------|
| (1) Instrument panel ASSY | (7) Trunk opener cancel button | (12) Illumination bracket |
| (2) Switch panel ASSY | (8) Ornament panel ASSY P | (13) Glove box back panel |
| (3) Ornament panel ASSY D OUT | (9) Glove box lid ASSY | (14) Glove box under cover |
| (4) Fuse lid | (10) Key cylinder - glove box | (15) Glove box damper |
| (5) Instrument panel lower cover | (11) Illumination LED ASSY | (16) Instrument panel side cover |
| (6) Instrument panel lower cover under | | |

General Description

EXTERIOR/INTERIOR TRIM

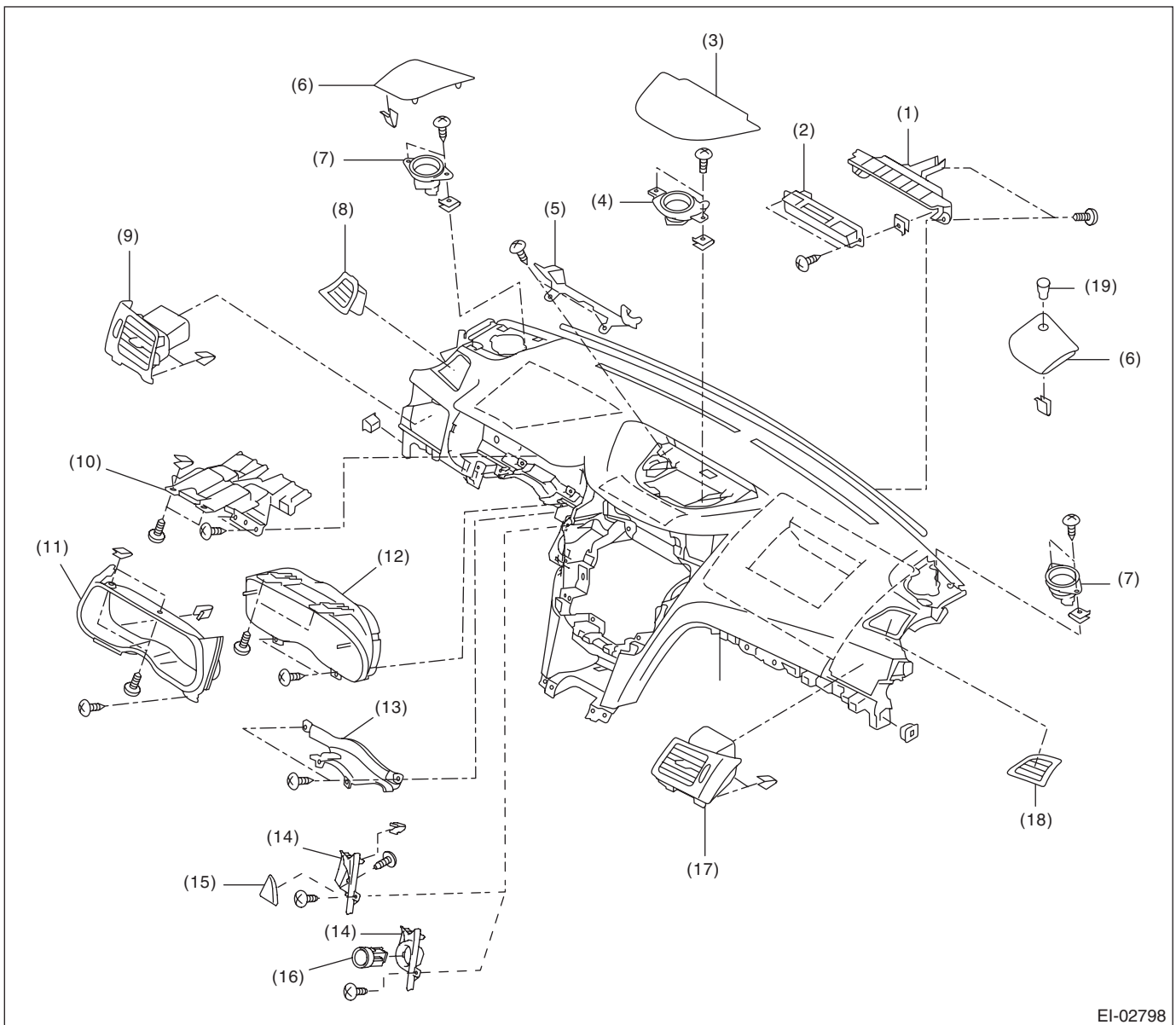


EI-02690

- | | | |
|---|--------------------------------|-------------------------------|
| (1) Instrument panel pad and frame ASSY | (8) Center panel ASSY | (15) Control panel ASSY |
| (2) Navigation bracket | (9) Center cover side RH | (16) Plug |
| (3) Navigation ASSY | (10) Insulator | (17) Accessory socket ASSY |
| (4) Audio bracket | (11) Pocket center light | (18) Center pocket back panel |
| (5) Audio ASSY | (12) Pocket ASSY (without lid) | (19) Center cover side LH |
| (6) Center grille ASSY LH | (13) Pocket ASSY (with lid) | |
| (7) Center grille ASSY RH | (14) Center pocket mat | |

General Description

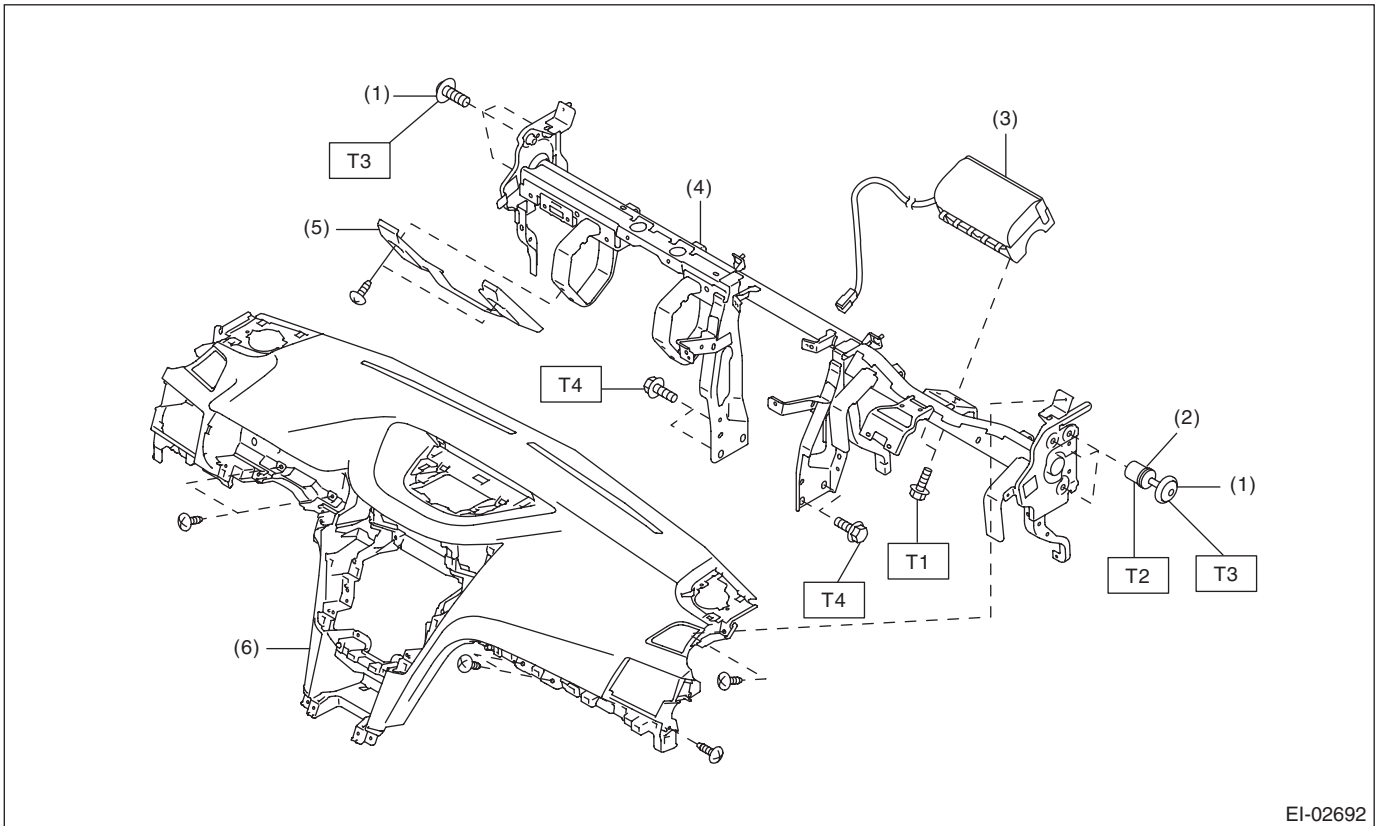
EXTERIOR/INTERIOR TRIM



EI-02798

- | | | |
|-----------------------------|--------------------------------|---|
| (1) Multi display panel UPR | (8) Defroster side grille RH | (15) Ornament panel ASSY D INN |
| (2) Multi display ASSY | (9) Side vent grille ASSY RH | (16) Starter switch ASSY (with push button start) |
| (3) Center speaker cover | (10) Meter reinforcement panel | (17) Side vent grille ASSY LH |
| (4) Center speaker ASSY | (11) Meter visor ASSY | (18) Defroster side grille LH |
| (5) Multi display panel LWR | (12) Combination meter ASSY | (19) Sunload sensor |
| (6) Side speaker cover | (13) Steering upper cover | |
| (7) Front side speaker ASSY | (14) Starter switch cover | |

General Description



EI-02692

- | | |
|------------------------------------|---|
| (1) TORX® bolt | (4) Steering support beam ASSY |
| (2) Adjuster bolt | (5) Knee guard panel COMPL |
| (3) Passenger's airbag module ASSY | (6) Instrument panel pad and frame ASSY |

Tightening torque: N-m (kgf-m, ft-lb)

T1: 7.5 (0.76, 5.5)

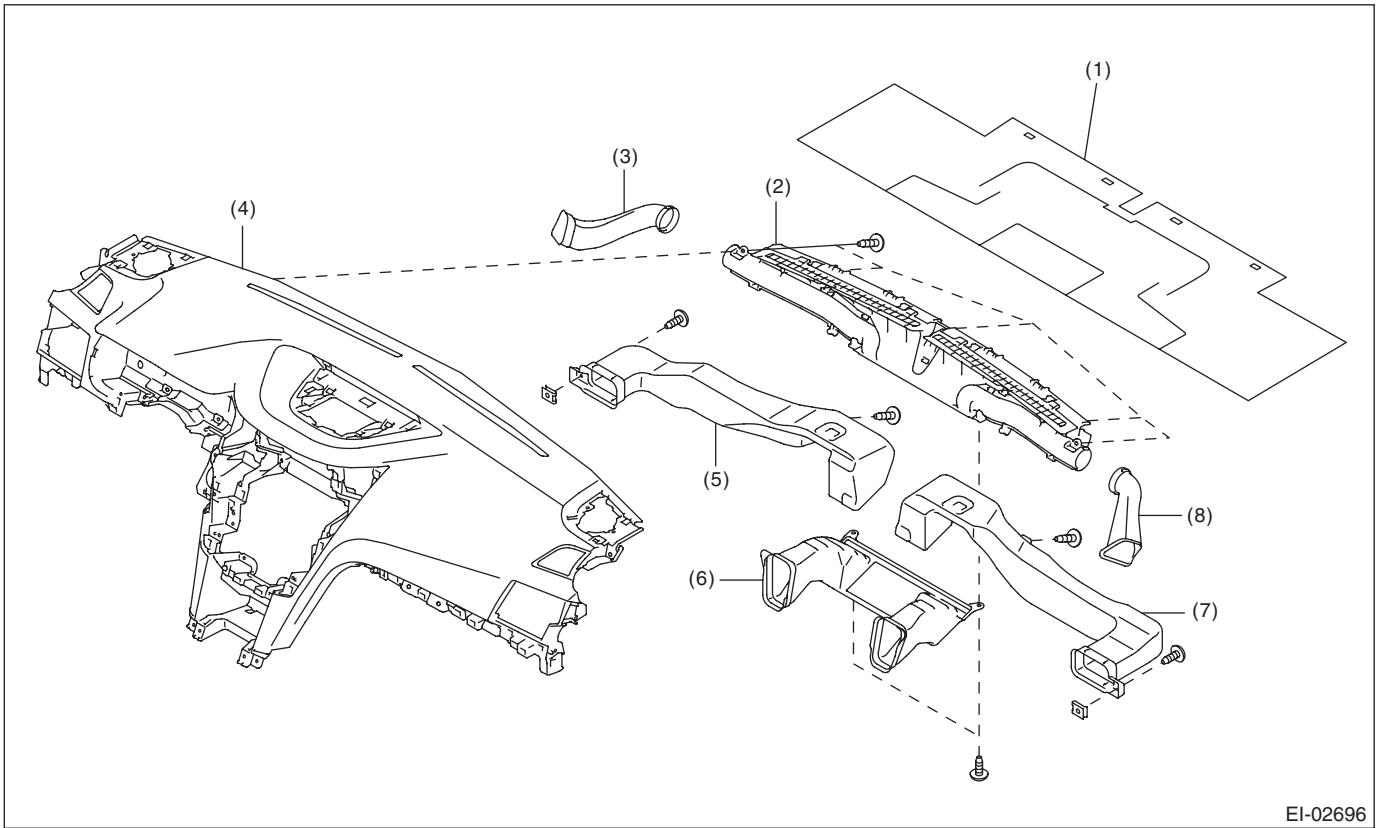
T2: 3 (0.31, 2.2)

T3: 18 (1.84, 13.3)

T4: 25 (2.55, 18.4)

General Description

EXTERIOR/INTERIOR TRIM

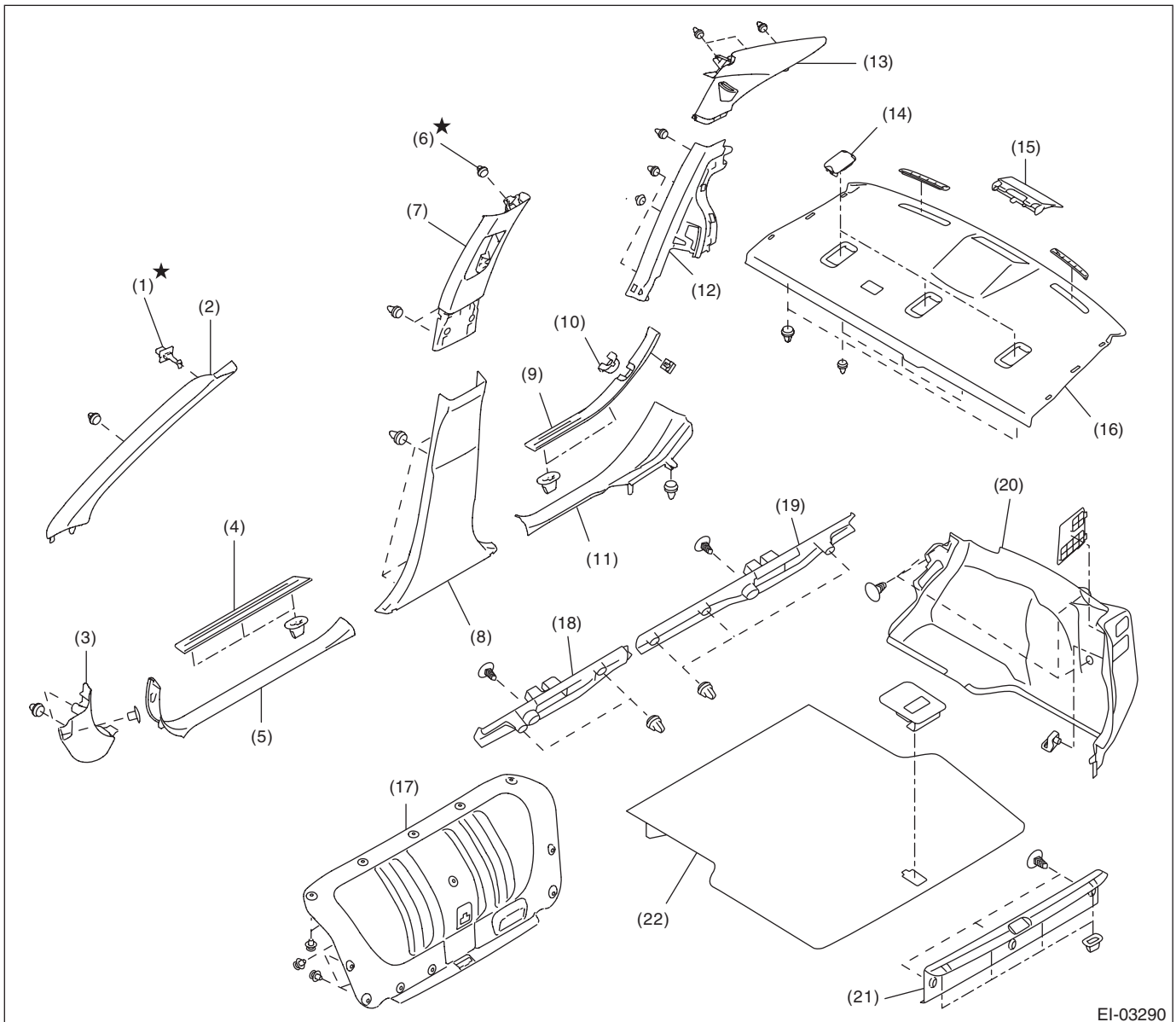


EI-02696

- | | | |
|---------------------------------|---|----------------------------|
| (1) Insulator | (4) Instrument panel pad and frame ASSY | (7) Side vent duct RH |
| (2) Front defroster nozzle ASSY | (5) Side vent duct LH | (8) Side defroster duct LH |
| (3) Side defroster duct RH | (6) Center vent duct | |

16.INNER TRIM

- Sedan model

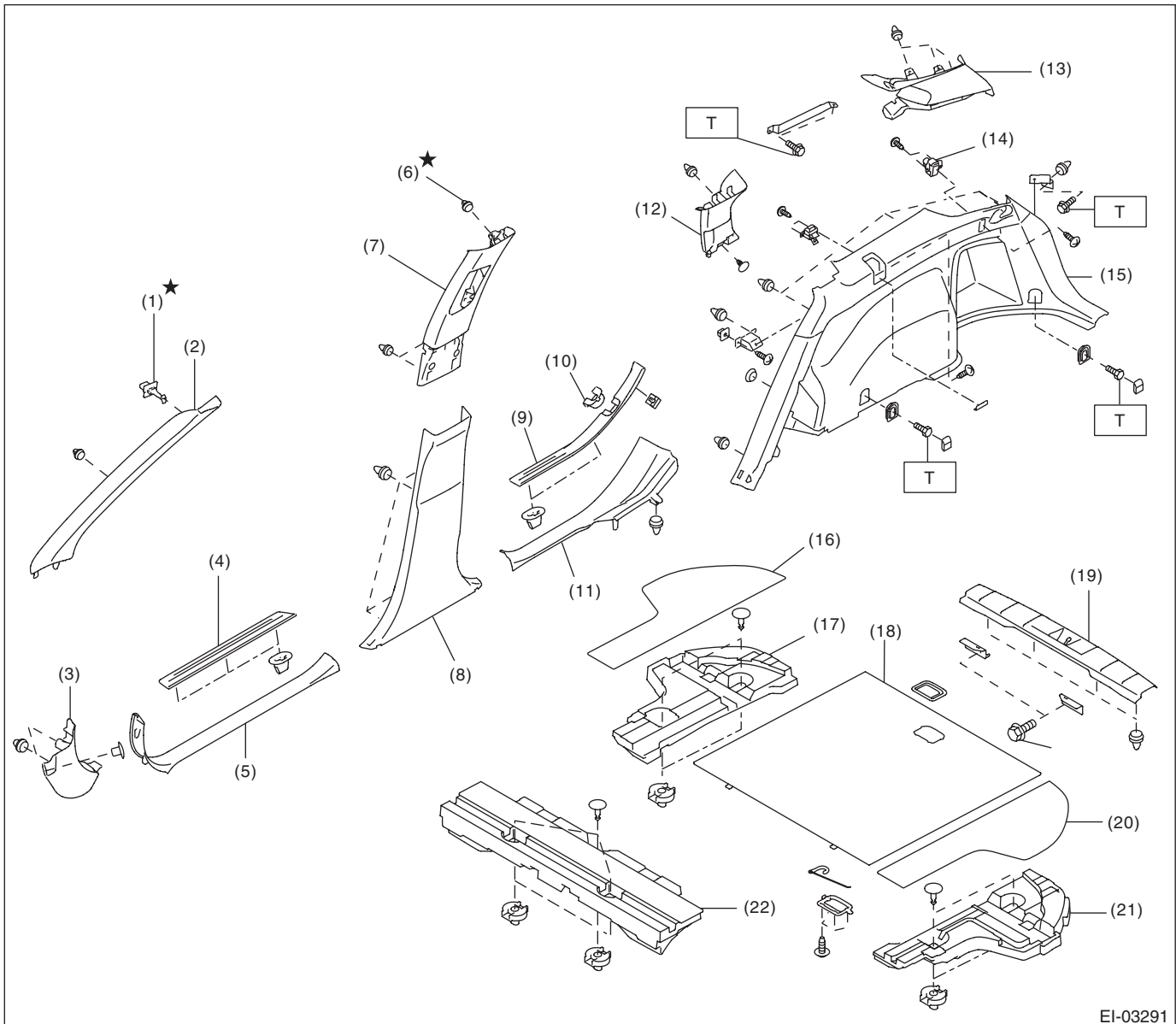


- | | | |
|---------------------------------|-----------------------------------|---------------------------------------|
| (1) Tether clip | (9) Side sill cover - rear OUT | (17) Trunk lid trim |
| (2) Front pillar trim | (10) Catcher cover | (18) Trunk trim panel ASSY - front LH |
| (3) Side sill cover front | (11) Side sill cover - rear INN | (19) Trunk trim panel ASSY - front RH |
| (4) Side sill cover - front OUT | (12) Rear quarter trim LWR | (20) Trunk trim panel ASSY - side |
| (5) Side sill cover - front INN | (13) Rear quarter trim UPR | (21) Trunk trim panel ASSY - rear |
| (6) Clip | (14) Child anchor cap | (22) Trunk mat |
| (7) Center pillar trim UPR | (15) High-mounted stop light ASSY | |
| (8) Center pillar trim LWR | (16) Rear shelf panel | |

General Description

EXTERIOR/INTERIOR TRIM

- OUTBACK model

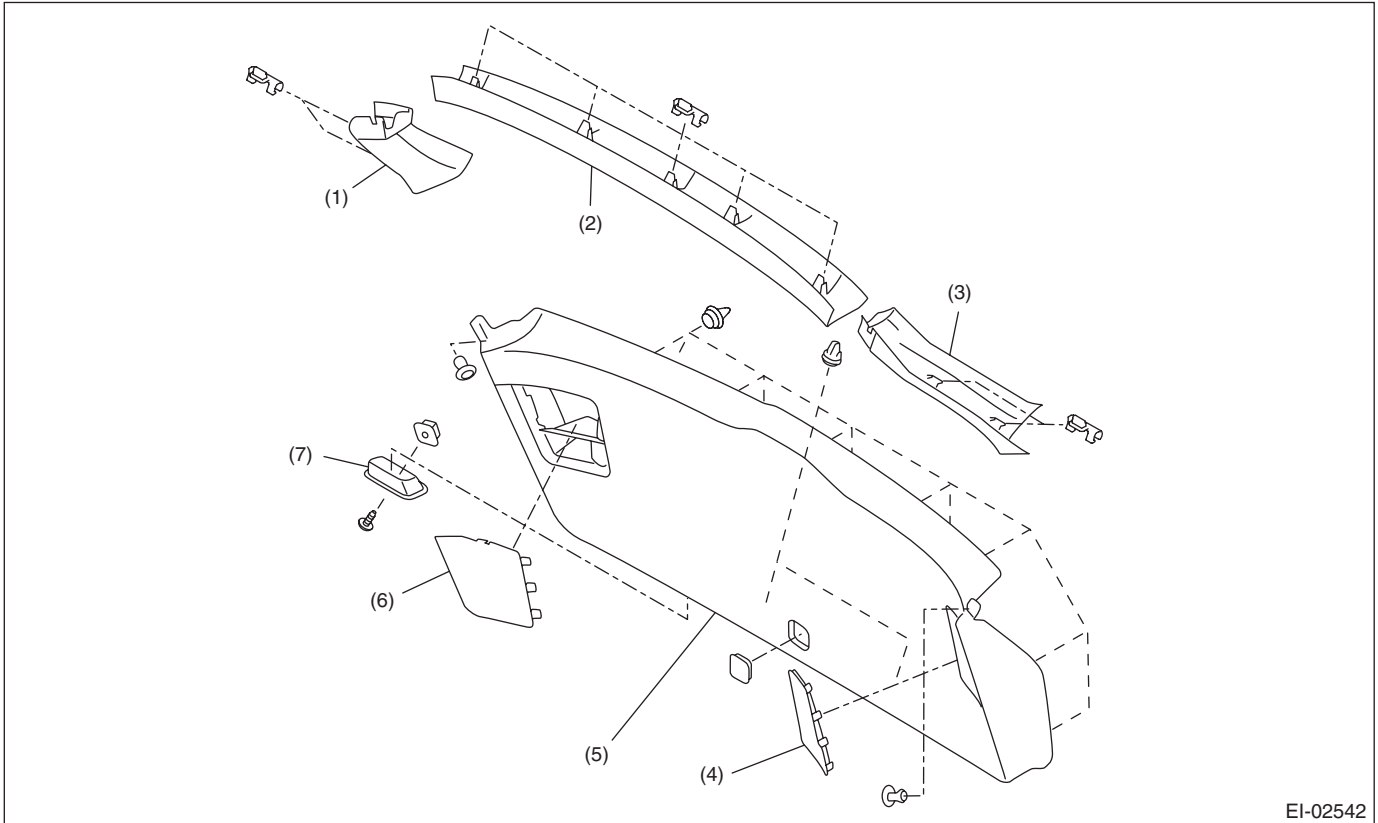


- | | | |
|---------------------------------|------------------------------------|------------------------------------|
| (1) Tether clip | (10) Catcher cover | (19) Rear floor edge cover |
| (2) Front pillar trim | (11) Side sill cover - rear INN | (20) Rear floor mat LH |
| (3) Side sill cover front | (12) Rear quarter trim UPR - front | (21) Rear floor spacer LH |
| (4) Side sill cover - front OUT | (13) Rear quarter trim UPR - rear | (22) Rear floor spacer CTR - front |
| (5) Side sill cover - front INN | (14) Hook | |
| (6) Clip | (15) Rear quarter trim LWR | |
| (7) Center pillar trim UPR | (16) Rear floor mat RH | |
| (8) Center pillar trim LWR | (17) Rear floor spacer RH | |
| (9) Side sill cover - rear OUT | (18) Rear floor mat CTR | |

Tightening torque: N-m (kgf-m, ft-lb)

T: 7.5 (0.76, 5.5)

17. REAR GATE TRIM



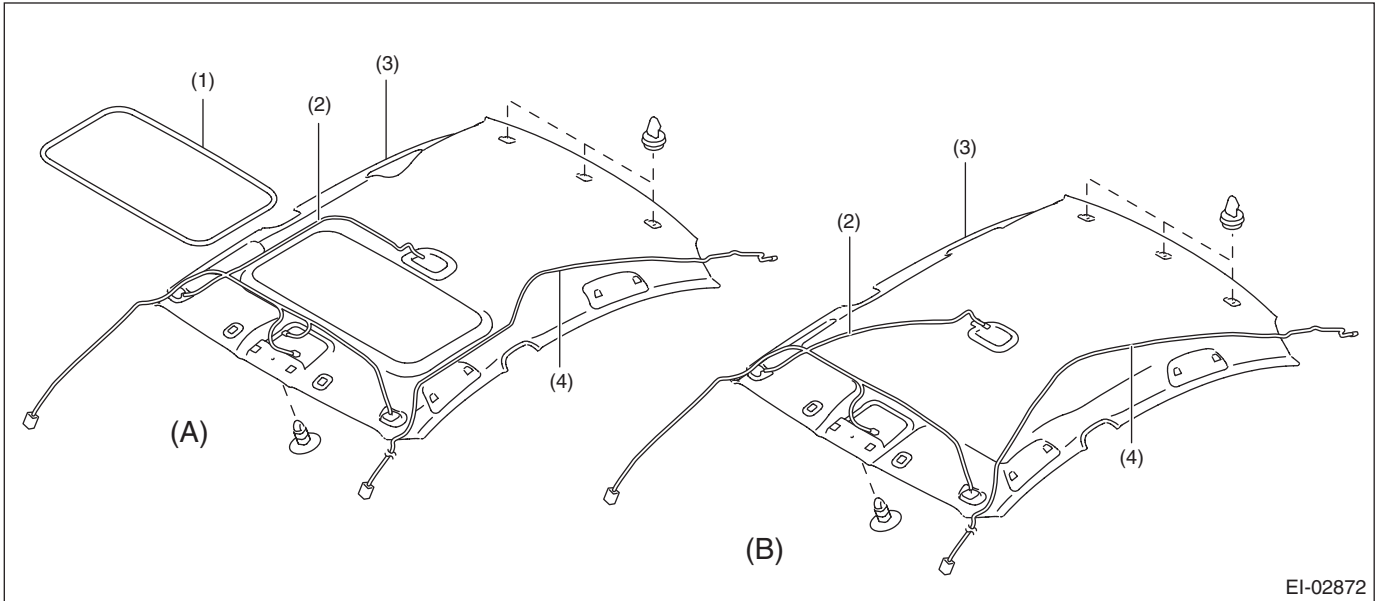
EI-02542

- | | | |
|------------------------------|----------------------------|----------------------|
| (1) Rear gate pillar trim RH | (4) Rear gate lower cap LH | (7) Rear gate handle |
| (2) Rear gate upper trim | (5) Rear gate lower trim | |
| (3) Rear gate pillar trim LH | (6) Rear gate lower cap RH | |

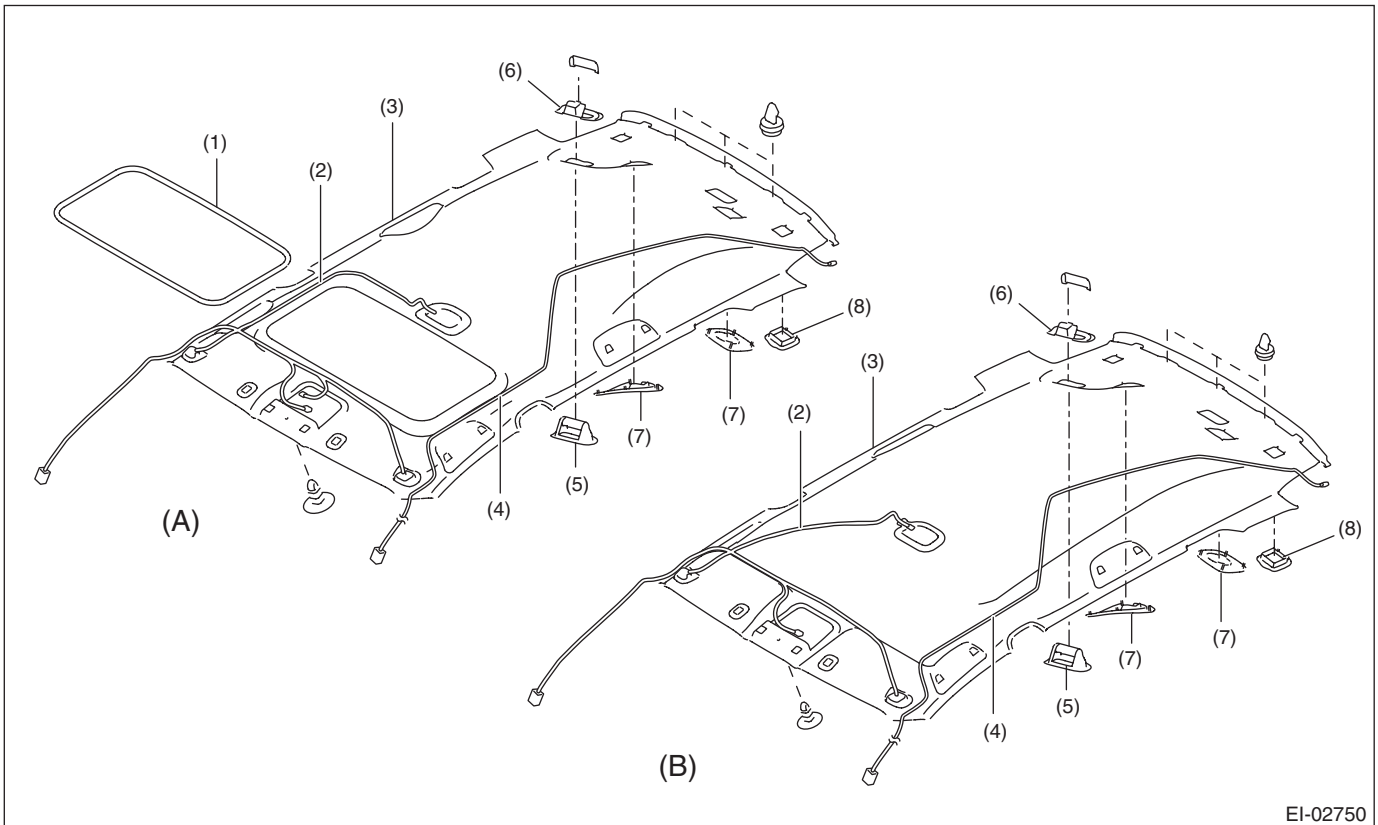
General Description

EXTERIOR/INTERIOR TRIM

18. ROOF TRIM



EI-02872



EI-02750

(A) Model with sunroof

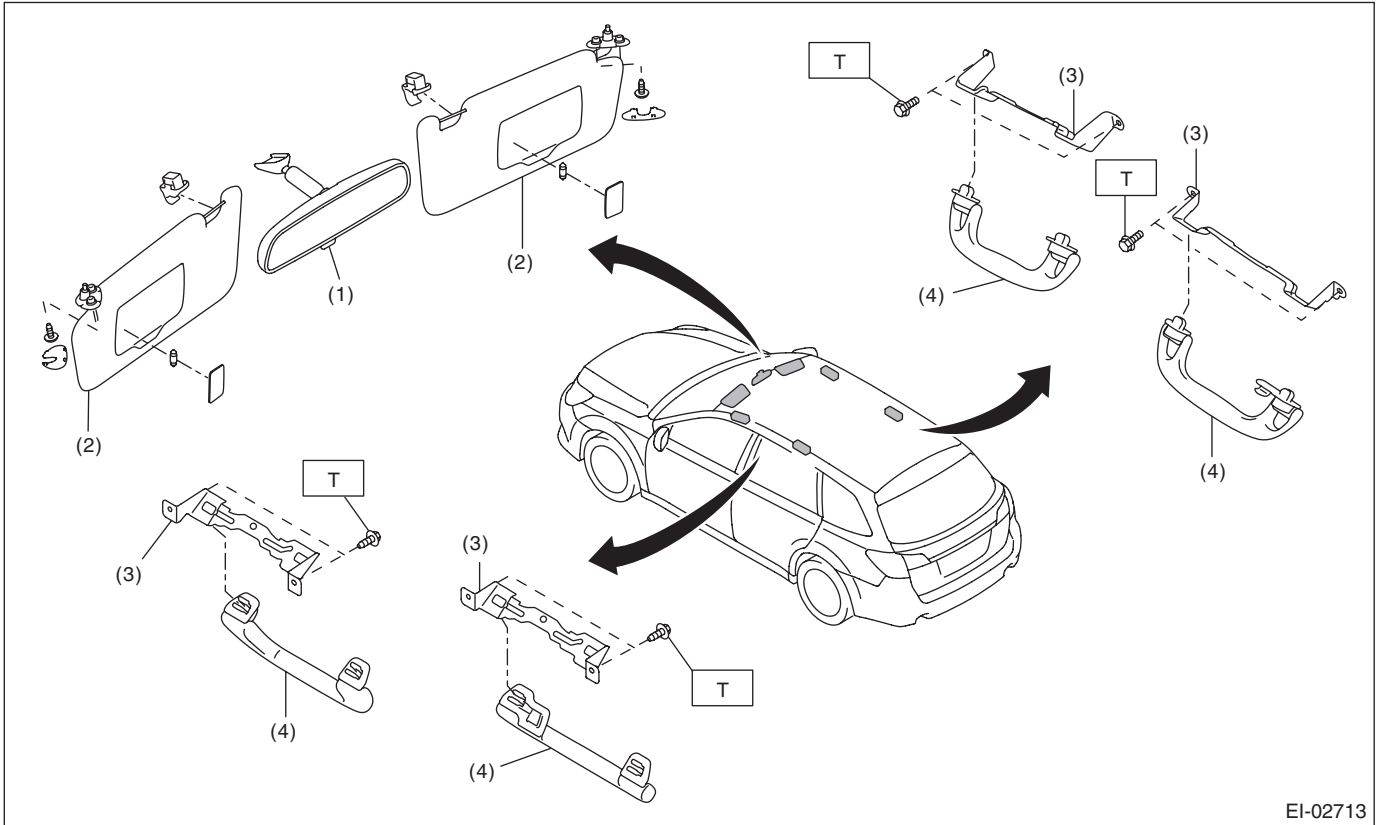
(B) Normal roof model

- (1) Sun roof garnish
- (2) Roof cord ASSY
- (3) Roof trim

- (4) Feeder cord ASSY
- (5) Seat belt holder cover
- (6) Seat belt holder base

- (7) Speaker cover
- (8) Child anchor cover

19.ROOM INNER PARTS



EI-02713

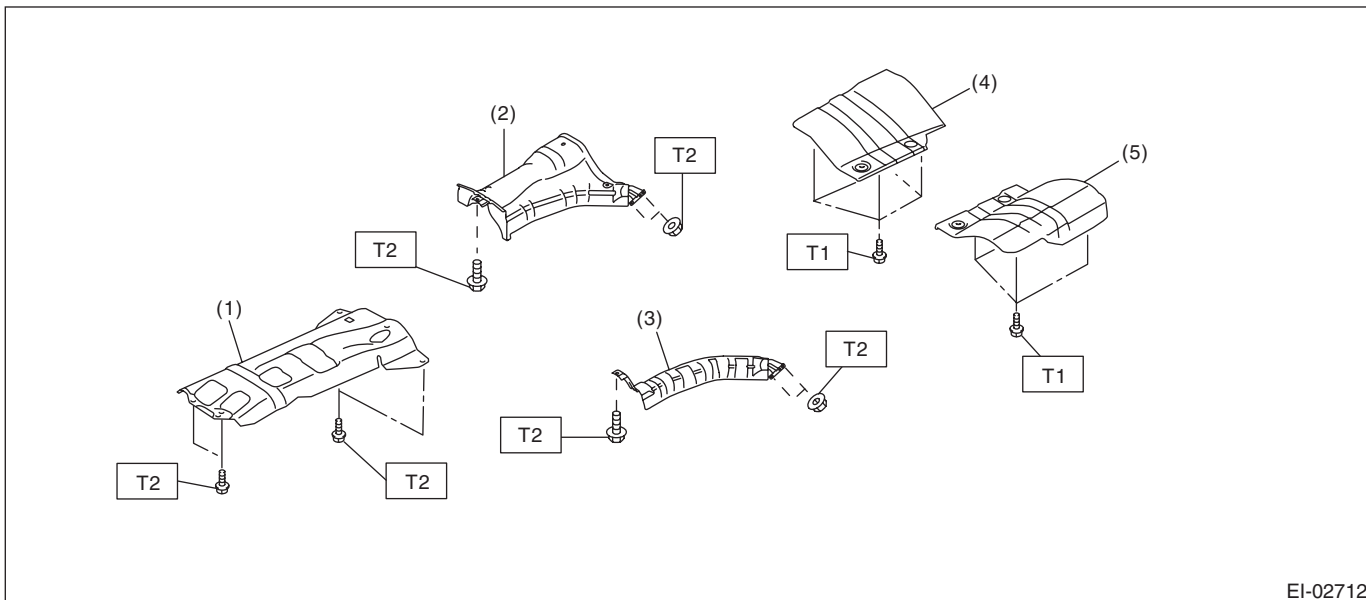
- | | |
|-----------------|-------------------------|
| (1) Room mirror | (3) Assist grip bracket |
| (2) Sun visor | (4) Assist grip |

Tightening torque: N·m (kgf·m, ft·lb)
T: 7.5 (0.76, 5.5)

General Description

EXTERIOR/INTERIOR TRIM

20.HEAT SHIELD COVER



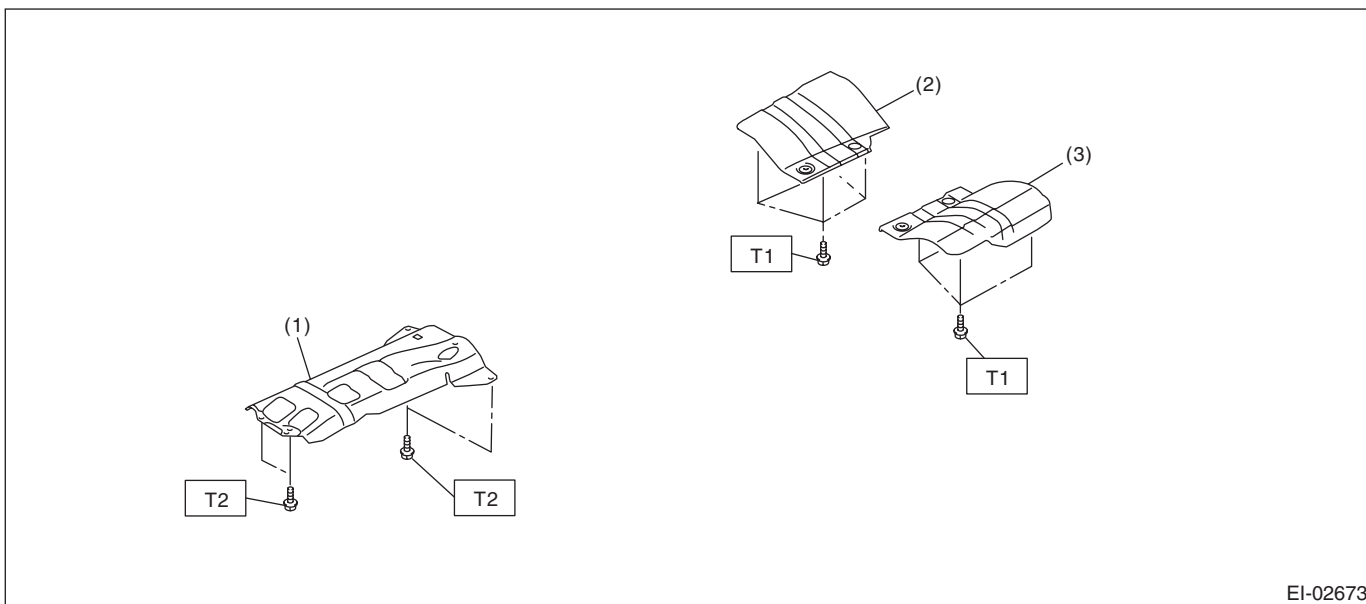
EI-02712

- | | |
|---|---|
| (1) Front heat shield cover | (4) Rear heat shield cover RH |
| (2) Center heat shield cover (H6 model) | (5) Rear heat shield cover LH (only H6 model) |
| (3) Center heat shield cover (H4 non-turbo model) | |

Tightening torque: N-m (kgf-m, ft-lb)

T1: 10 (1.02, 7.4)

T2: 18 (1.84, 13.3)



EI-02673

- | | |
|-------------------------------|---|
| (1) Front heat shield cover | (3) Rear heat shield cover LH (only H6 model) |
| (2) Rear heat shield cover RH | |

Tightening torque: N-m (kgf-m, ft-lb)

T1: 10 (1.02, 7.4)

T2: 18 (1.84, 13.3)

NOTE:

For 2.5 L non-turbo model, refer to "EXHAUST SYSTEM" section.

General Description

EXTERIOR/INTERIOR TRIM

B: PREPARATION TOOL

TOOL NAME	REMARKS
Clip remover	Used for removing trim. <ul style="list-style-type: none">• KTC AP201-10A• KTC AP201-N• KTC AP203-10A• KTC AP20L-10B or equivalent
Clip clamp pliers	Used for removal of various clips and clamps. <ul style="list-style-type: none">• KTC CCP-190 or equivalent