

Outer Mirror Assembly

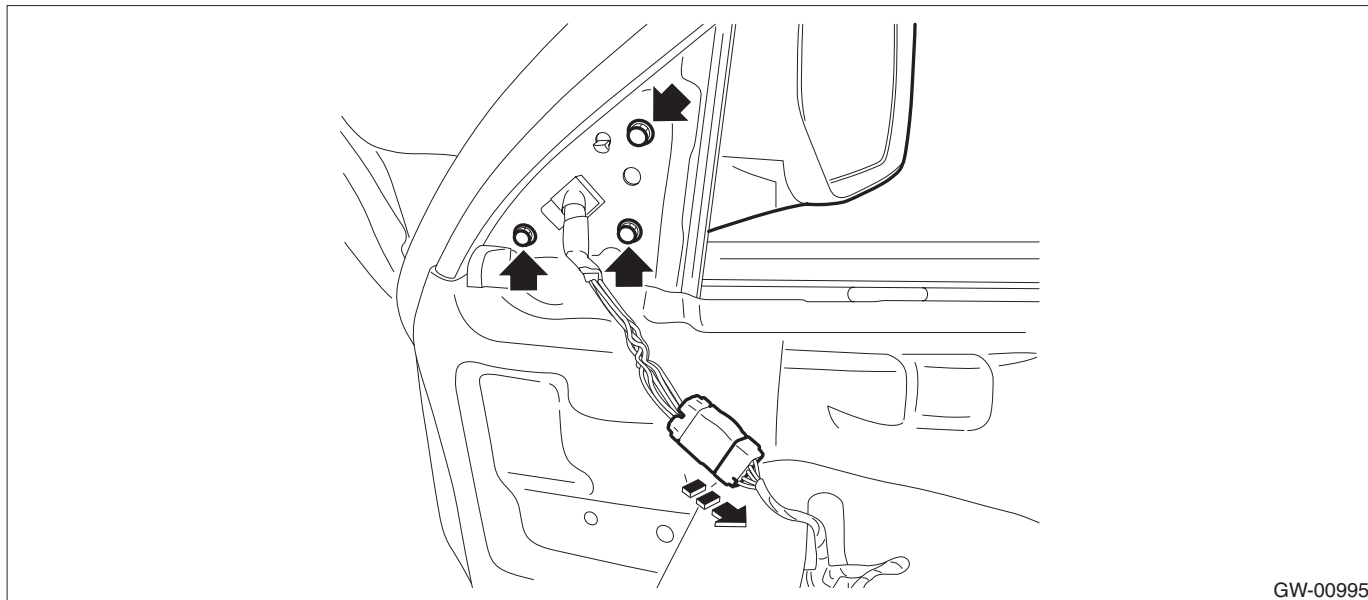
GLASS/WINDOWS/MIRRORS

8. Outer Mirror Assembly

A: REMOVAL

Refer to "DISASSEMBLY" for removal procedures of scalp cap and mirror face. <Ref. to GW-25, DISASSEMBLY, Outer Mirror Assembly.>

- 1) Remove the front door trim. <Ref. to EI-59, FRONT DOOR, REMOVAL, Door Trim.>
- 2) Remove the outer mirror assembly.
 - (1) Disconnect the connector.
 - (2) Remove the bolts to remove outer mirror assembly.



GW-00995

B: INSTALLATION

Install each part in the reverse order of removal.

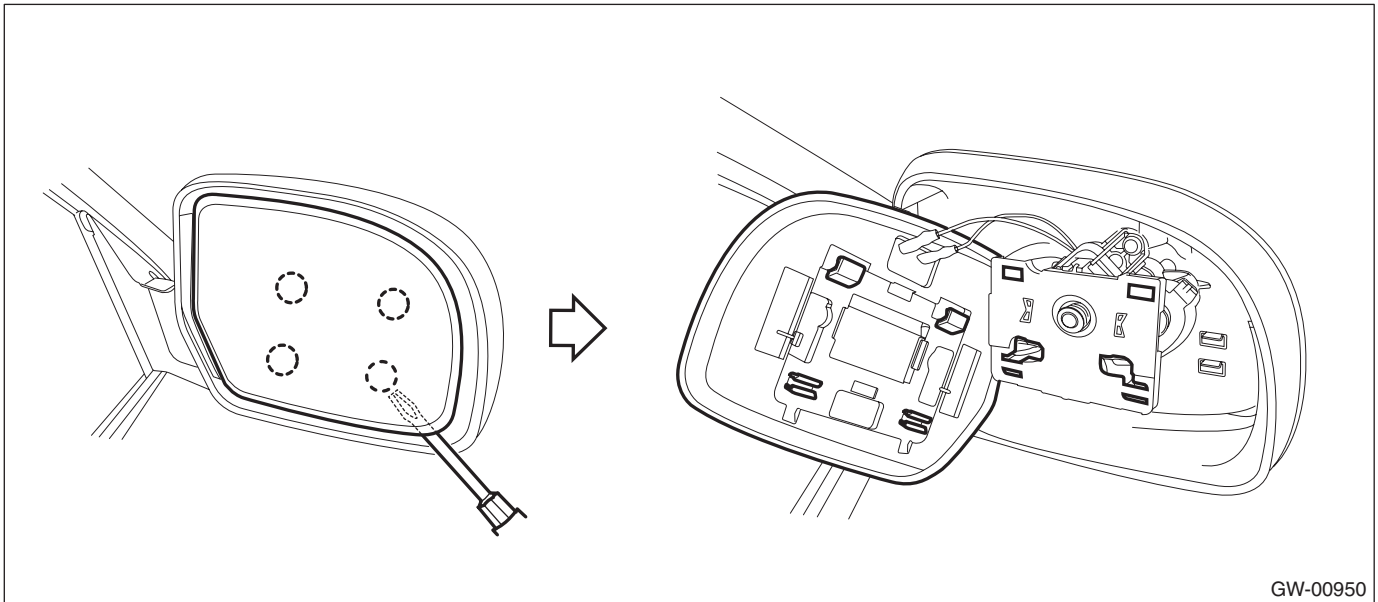
Tightening torque:

Outer mirror assembly: 4.5 N·m (0.46 kgf-m, 3.3 ft-lb)

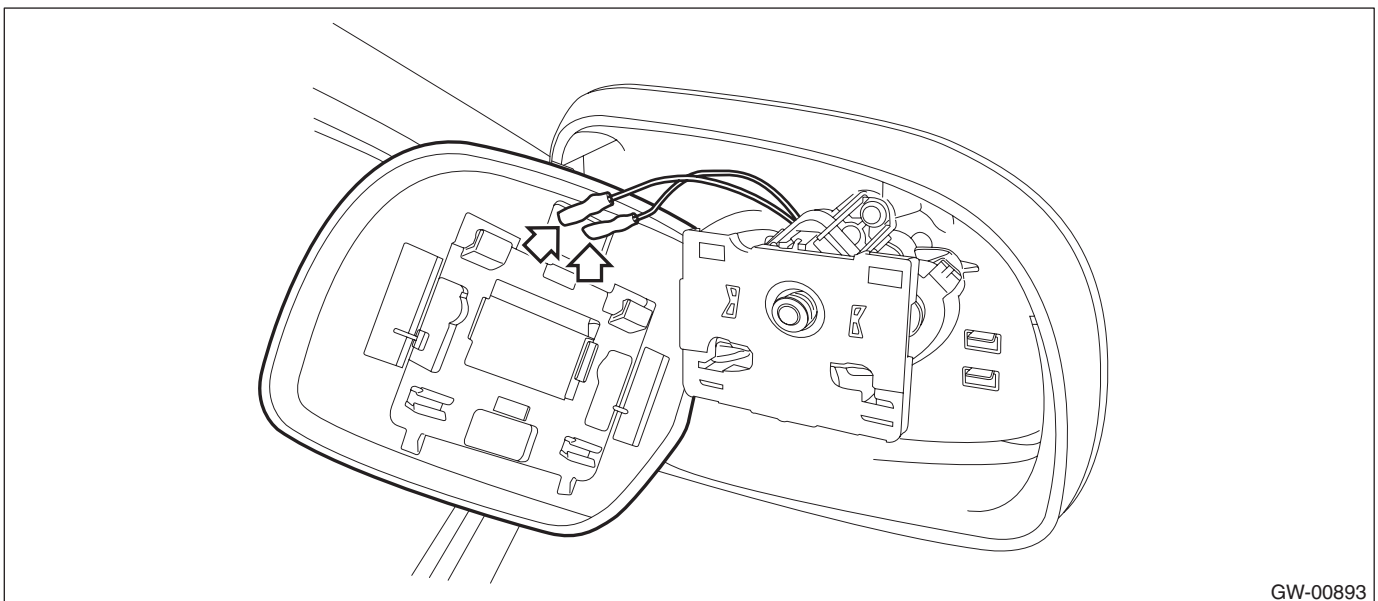
C: DISASSEMBLY

CAUTION:

- When removing the mirror, be careful not to damage the back surface of mirror with a flat tip screwdriver.
 - When installing the mirror, insert the connector and clip securely.
- 1) Operate the remote control mirror switch to face the mirror surface upward.
 - 2) Disconnect the ground cable from battery.
 - 3) Remove the outer mirror.
 - (1) Disconnect the clips using a flat tip screwdriver.



(2) Disconnect the mirror heater connector. (Model with mirror heater)



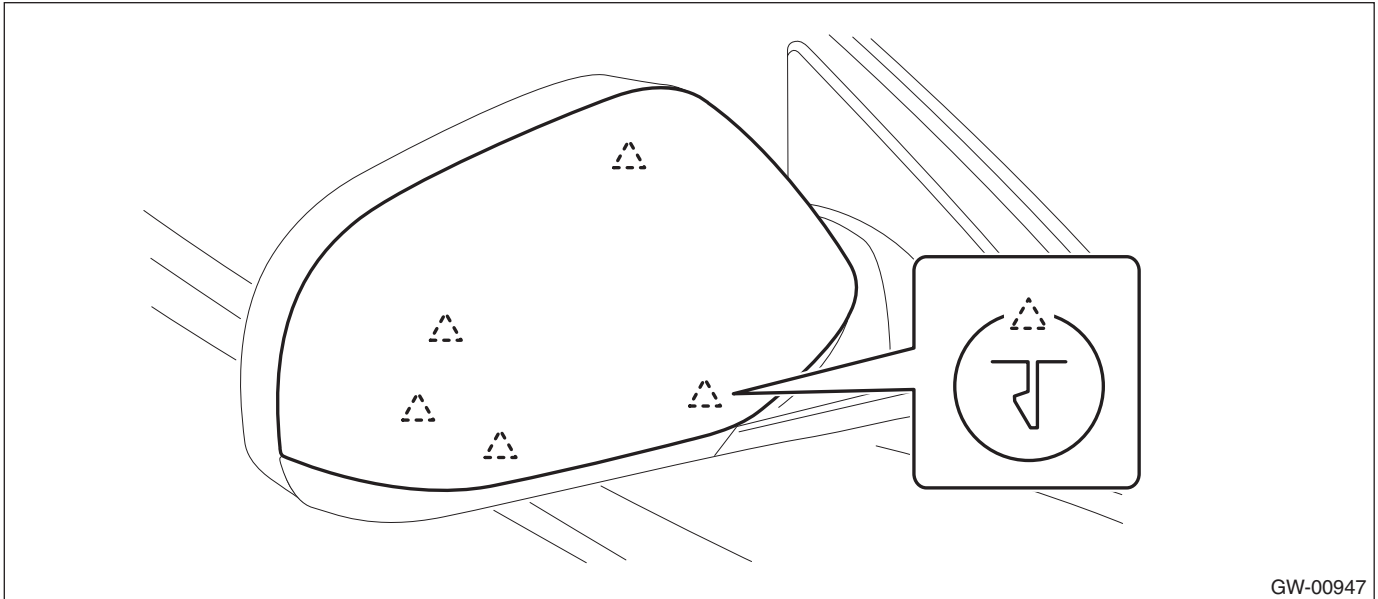
Outer Mirror Assembly

GLASS/WINDOWS/MIRRORS

4) Disconnect the claws and then remove the scalp cap.

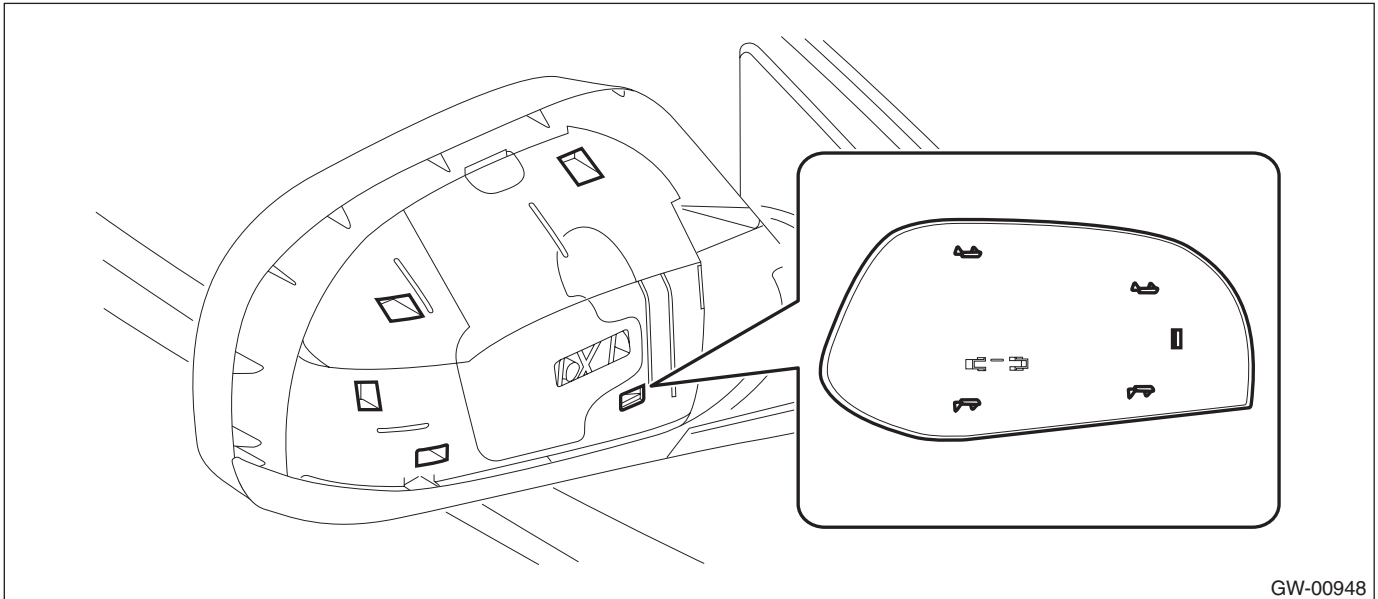
CAUTION:

Be careful not to apply excessive force when removing the scalp cap, as the lower hooks may become damaged.



D: ASSEMBLY

1) Engage the claws into the hole and install the scalp cap.



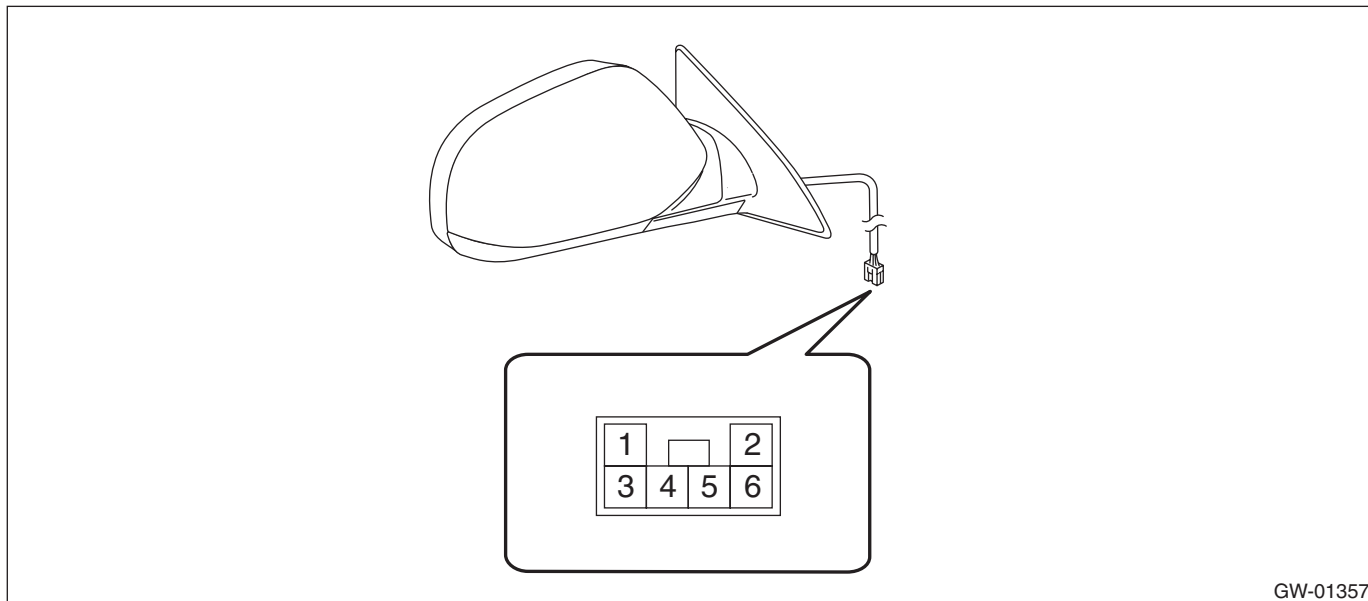
2) Check that all the claws are securely engaged.

3) Install the outer mirror in the reverse order of removal.

E: INSPECTION

1. CHECK MOTOR OPERATION

- 1) Disconnect the outer mirror connector.
- 2) Apply battery voltage between the outer mirror connector terminals and check the mirror operation.



GW-01357

Terminal No.	Inspection conditions	Switch position
—	—	OFF
2 (+) — 5 (-)	Apply battery voltage between terminals.	UP
5 (+) — 2 (-)	Apply battery voltage between terminals.	DOWN
4 (+) — 2 (-)	Apply battery voltage between terminals.	LEFT
2 (+) — 4 (-)	Apply battery voltage between terminals.	RIGHT

- 3) If it does not operate normally, replace the outer mirror assembly.