

Interior Light System

LIGHTING SYSTEM

10. Interior Light System

A: WIRING DIAGRAM

Refer to "Interior Light System" in the wiring diagram. <Ref. to WI-204, WIRING DIAGRAM, Interior Light System.>

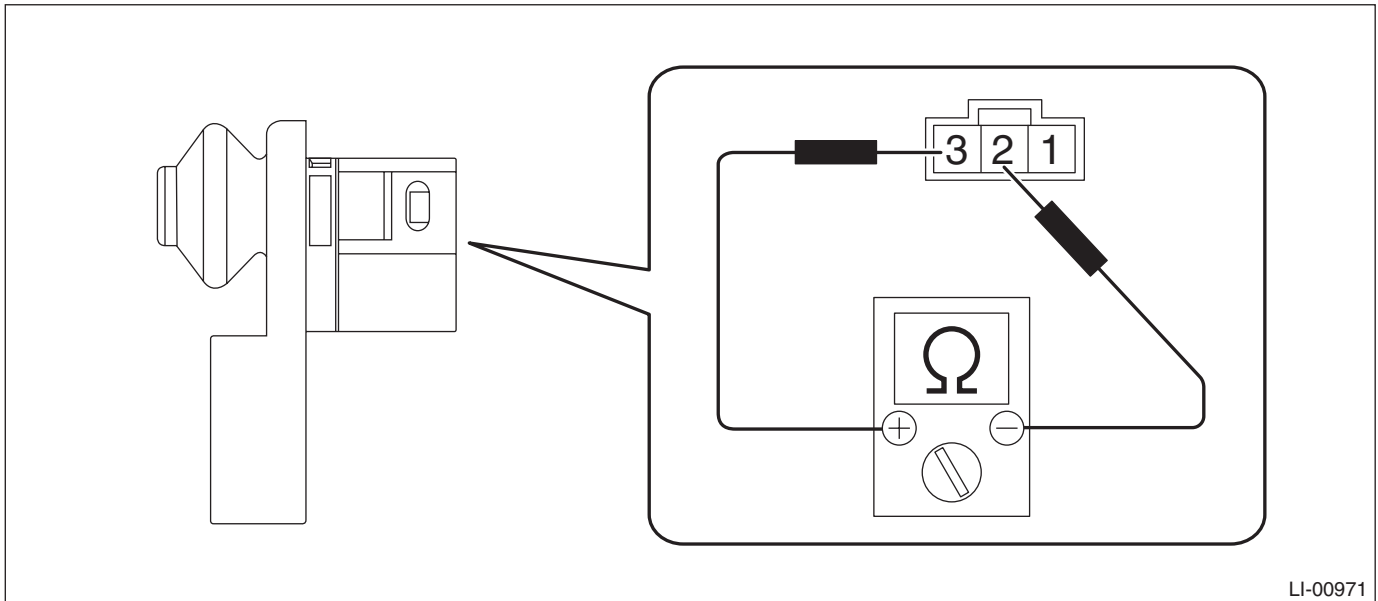
B: INSPECTION

1. CHECK DOOR SWITCH

- 1) Remove the door switch.
- 2) Measure the resistance between door switch terminals.

Preparation tool:

Circuit tester



Terminal No.	Inspection conditions	Standard
2 — 3	When door is opened	Less than 1 Ω
	When door is closed	1 MΩ or more

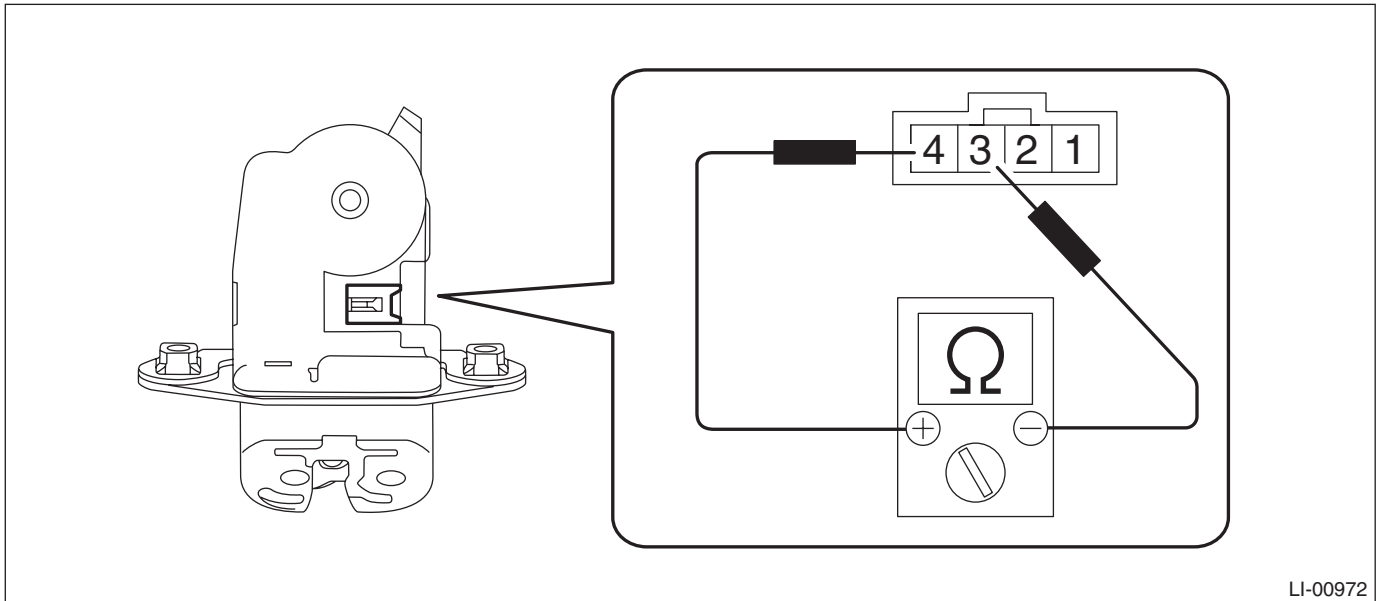
- 3) Replace the door switch if the inspection result is not within the standard value.

2. CHECK REAR GATE LATCH SWITCH

- 1) Disconnect the rear gate latch switch connector.
- 2) Measure the resistance between rear gate latch switch terminals.

Preparation tool:

Circuit tester



Terminal No.	Inspection conditions	Standard
3 — 4	When rear gate is opened	Less than 1 Ω
	When rear gate is closed	1 MΩ or more

- 3) If the inspection result is not within the standard value, replace the rear gate latch and actuator assembly.

Interior Light System

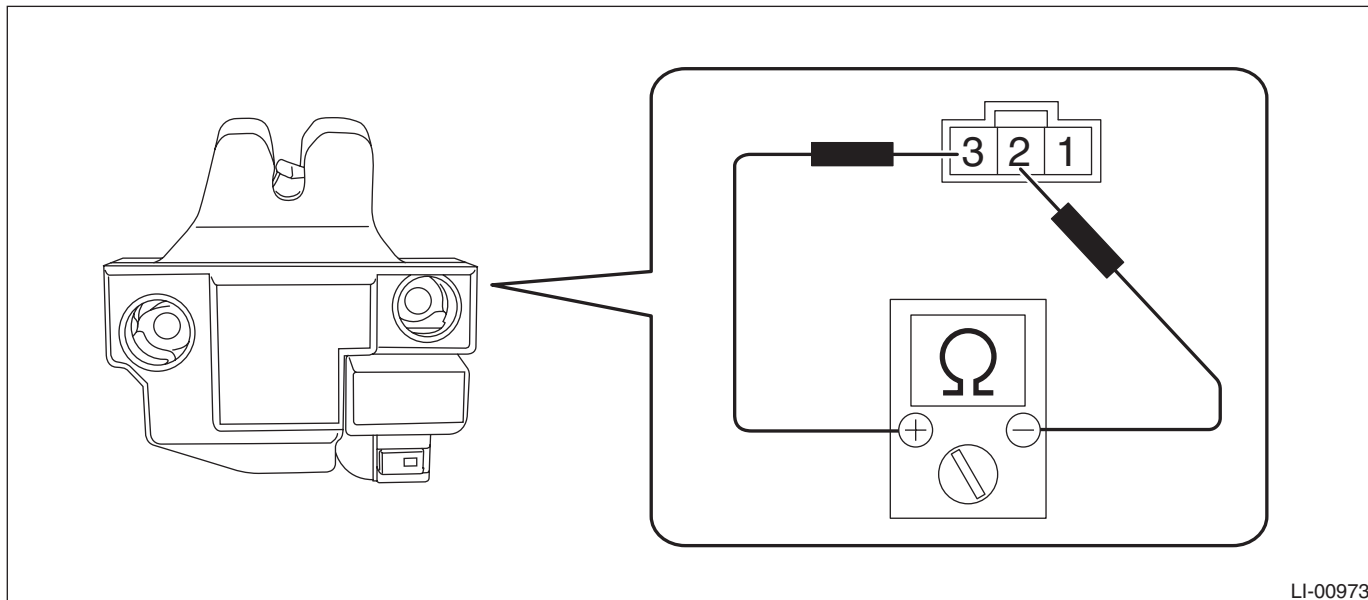
LIGHTING SYSTEM

3. CHECK TRUNK LID LATCH SWITCH

- 1) Disconnect the trunk lid latch switch connector.
- 2) Measure the resistance between trunk lid latch switch terminals.

Preparation tool:

Circuit tester



Terminal No.	Inspection conditions	Standard
2 — 3	When trunk lid is opened	Less than 1 Ω
	When trunk lid is closed	1 M Ω or more

- 3) If the inspection result is not within the standard value, replace the trunk lid latch and actuator assembly.

C: NOTE

For operation procedures of each component of the interior light system, refer to the respective section.

- Spot map light: <Ref. to LI-65, Spot Map Light.>
- Room light: <Ref. to LI-67, Room Light.>
- Luggage room light: <Ref. to LI-69, Luggage Room Light.>
- Trunk room light: <Ref. to LI-71, Trunk Room Light.>
- Glove box light: <Ref. to LI-72, Glove Box Light.>
- Door step light: <Ref. to LI-73, Door Step Light.>
- Door switch: <Ref. to LI-79, Door Switch.>