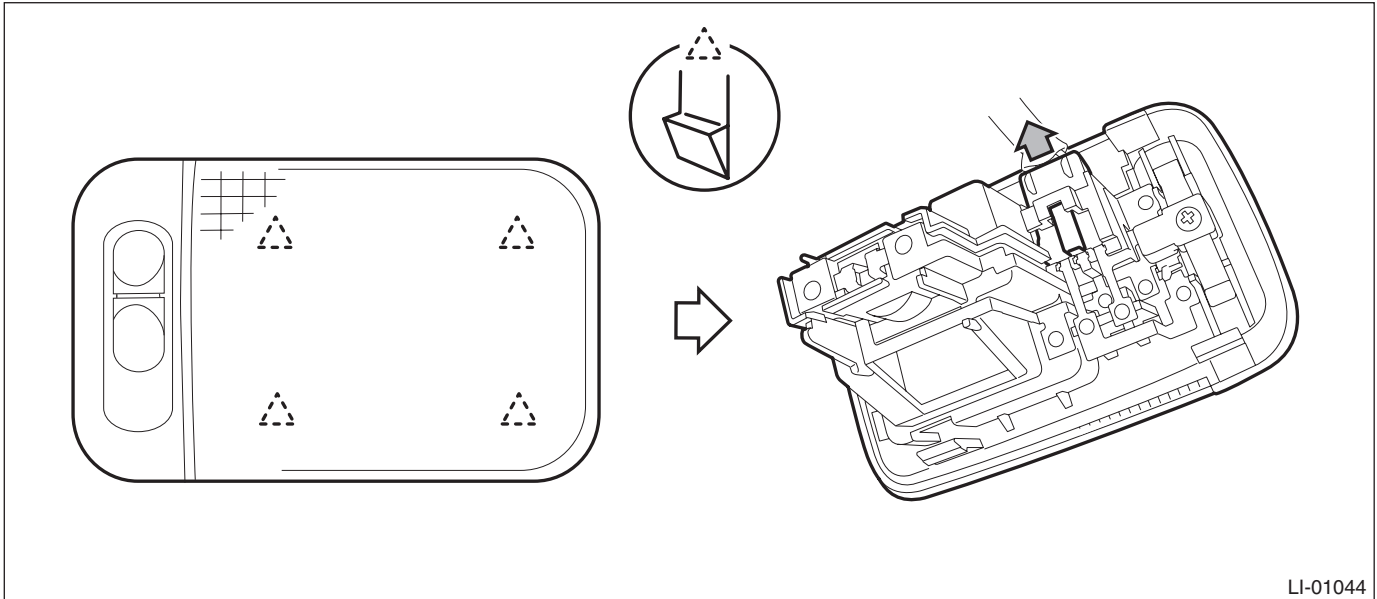


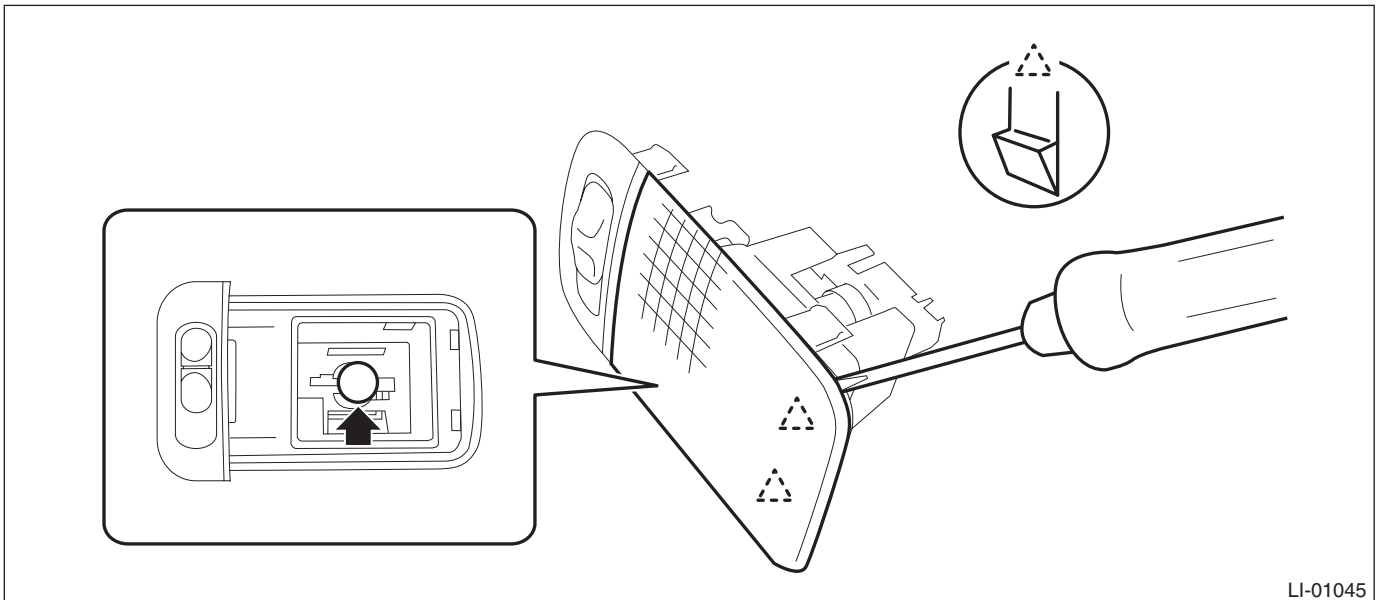
## 30. Luggage Room Light

### A: REMOVAL

- 1) Disconnect the ground cable from battery.
- 2) Remove the luggage room light.
  - (1) Release the claws and remove the luggage room light main body.
  - (2) Disconnect the connector and remove the luggage room light.



- 3) Release the claws, and detach the luggage room light cover and bulb.



### B: INSTALLATION

Install each part in the reverse order of removal.

# Luggage Room Light

## LIGHTING SYSTEM

### C: INSPECTION

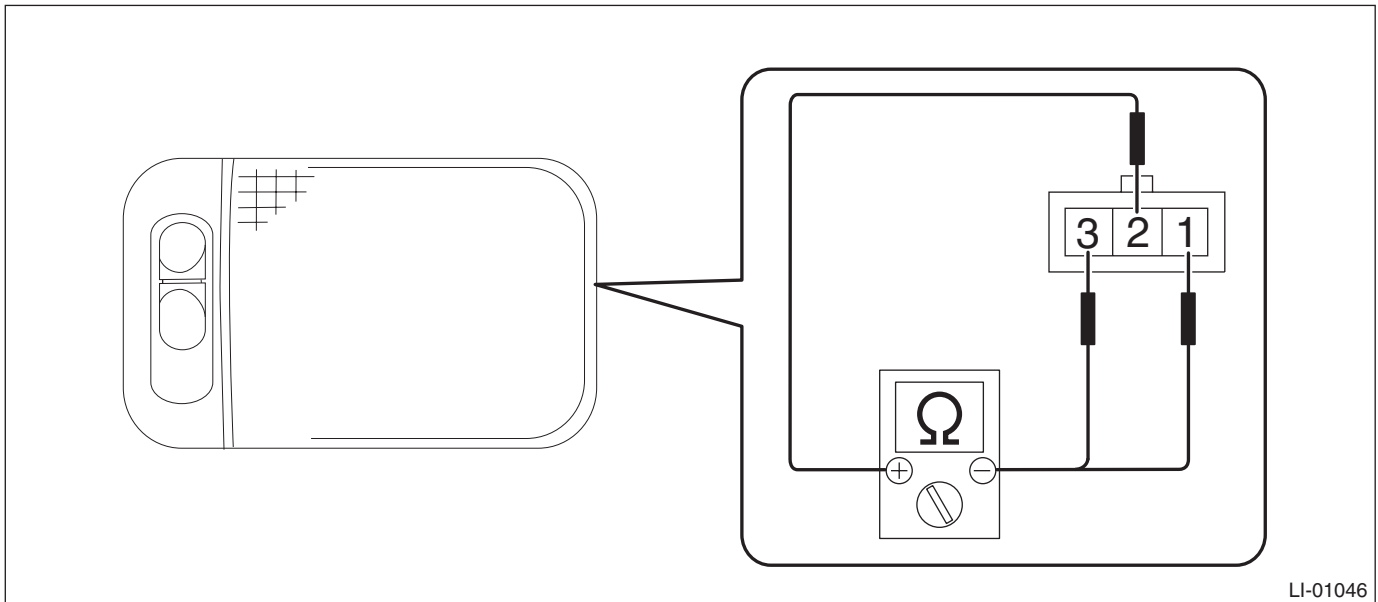
#### 1. LUGGAGE ROOM LIGHT BULB

- 1) Visually check the bulb for blow out.
- 2) Check the bulb specification. <Ref. to LI-2, SPECIFICATION, General Description.>
- 3) Replace the bulb if it is found defective.

#### 2. LUGGAGE ROOM LIGHT SWITCH

- 1) Remove the luggage room light.
- 2) Measure the resistance between luggage room light switch terminals.

**Preparation tool:**  
**Circuit tester**



Terminal No.	Inspection Conditions	Standard
—	Switch OFF	1 M $\Omega$ or more
1 — 2	Switch ON	Less than 1 $\Omega$
2 — 3	Switch door	Less than 1 $\Omega$

- 3) Replace the luggage room light if the inspection result is not within the standard value.