



LEGACY | ACCESSORIES





Make it all yours.

Subaru has excelled in its pursuit of the world's ultimate handling to produce the Legacy, a car that exceeds drivers' diverse requirements.

Refined performance is coupled with outstanding handling and safety. Its stunning design stirs your heart at a glance. Each and every element is designed according to Subaru's car-building philosophy.

Moreover, to ensure that your Legacy is built as the one vehicle that matches your lifestyle perfectly, we offer a full line up of accessories that are designed to harmonise with its styling. Subaru accessories also perform above expectation and are built to last. Your choice of accessories will add the finishing touch to a unique Legacy projects your personality.

INDEX

- 4 Exterior and Styling
- 6 Wheels
- 8 Protection
- 10 Carrier
- 12 Utility/Interior
- 14 Interior/Safety
- 15 Safety
- 16 Application List
- 18 Outback

Sedan: presented with Front grille, Front under spoiler, Side visor and Trunk lid spoiler (Small)
Wagon: presented with Side strake, Waist spoiler and Side visor

Exterior and Styling



Image: vehicle is presented with Front under spoiler, Side strake, Trunk lid spoiler (Small), Side visor and Grade emblem



1 Front grille mesh
J1010AG010
Mesh type insert which gives a whole new image to the front. (Made of metal)



2 Front grille mesh
J1010AG020
Grid type insert which gives a whole new image to the front. (Made of resin)



3 Front grille mesh (Black)
J1010AG030
Black coloured grid type insert which gives a whole new image to the front. (Made of resin)



4 Side visor (Sedan)
E3610AG000
Allows windows to stay open for ventilation during unsettled weather.



5 Side visor (Wagon)
E3610AG010
Allows windows to stay open for ventilation during unsettled weather.



9 Side strake
E2610AG050
Gives an aggressive performance look.
*Painting required.



6 Front under spoiler (2.0R, 2.5i, 2.5GT)
E2410AG000
Gives an aggressive performance look.
*Painting required.



7 Front under spoiler (3.0R)
E2410AG020
Gives an aggressive performance look.
*Painting required.



8 Front under spoiler (2.5GTB, 3.0RB)
E2410AG010
Gives an aggressive performance look.
*Painting required.



10 Trunk lid spoiler (Large)
E7210AG000##
Primed rear spoiler adds a sporty touch to your vehicle.



11 Trunk lid spoiler (Small)
E7210AG010
Primed rear spoiler adds a sporty touch to your vehicle.
*Painting required.



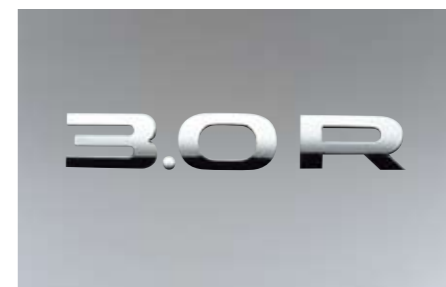
12 Waist spoiler (Wagon)
E7210AG020
Primed waist spoiler adds a sporty touch to your vehicle.
*Painting required.



13 Grade emblem 2.0R
J1210AG221, J1210AG201
Adds an accent to rear styling.
*J1210AG201: For vehicles without Subaru letter mark.



14 Grade emblem 2.5i
J1210AG225, J1210AG205
Adds an accent to rear styling.
*J1210AG205: For vehicles without Subaru letter mark.



15 Grade emblem 3.0R
J1210AG224, J1210AG204
Adds an accent to rear styling.
*J1210AG204: For vehicles without Subaru letter mark.



16 Grade emblem 2.5GT
J1210AG227
Adds an accent to rear styling.

Wheels



17 Alloy wheel 10-spoke (18 inch)
28111AG261



18 Alloy wheel 10-spoke (18 inch)
28111AG090



19 Alloy wheel 6-spoke, Lustrous silver (17 inch)
28111AG270



20 Alloy wheel 6-spoke, Silver (17 inch)
28111AG240



21 Alloy wheel 5-spoke (17 inch)
28111AG010



22 Alloy wheel 5-spoke, Gold (17 inch)
28111FE021



23 Alloy wheel 5-spoke, Silver (17 inch)
28111AE019



24 Alloy wheel 7-spoke (16 inch)
28111AG000



25 Wheel lock nut
B327EYA000

Protection



26 Bumper corner protector (Front & Rear set)
J1010LE100
Protects bumper corners.



27 Splash guard (Front set)
J1010AG221
Helps protect your vehicle from mud and snow.



28 Splash guard (Rear set / Sedan, Wagon)
J1010AG264, J1010AG224
Helps protect your vehicle from mud and snow.



29 Rear gate end moulding (Sedan)
E755EAG100
Stylish chrome finished moulding.



30 Rear gate end moulding (Wagon)
E751EAG000
Stylish chrome finished moulding.



31 Cargo step panel (Wagon)
E771EAG000
Rugged plastic resin cover helps protect upper surface of rear bumper.



32 Cargo room plate (Wagon)
95073AG010JC
Protects the rear boot lip when loading and unloading.



33 Side sill plate
E1010AG000
Replaces existing sill plates with a more sporty look.

Carrier



34 Carrier base (Sedan)
E361EAG200
Perfectly fitting stylish base for carrier attachments.



35 Carrier base (Wagon)
E361EAG000
Perfectly fitting stylish base for carrier attachments.



36 Roof rack platform
E365ESC200
Enhances your load carrying drastically.
*Carrier base required.



37 Transport box (Long)
E361EYA900
Size: 2,267 x 805 x 355 mm.
Volume: 430 litres.
*Carrier base required.



38 Transport box (Short)
E361EYA801
Size: 1,792 x 797 x 355 mm.
Volume: 380 litres.
*Carrier base required.



39 Kayak attachment
E361EAG600
For 1 kayak.
*Carrier base required.



40 Ski attachment (Maximum 6 sets)
E361EAG550
For 6 sets of skis or 4 snowboards.
Usable width: 640 mm.
*Carrier base required.



41 Ski attachment (Maximum 4 sets)
E361EAG500
For 4 sets of skis or 2 snowboards.
*Carrier base required.



42 Bicycle holder (Basic)
E365ESC100
Fits perfectly on the carrier base.
*Carrier base required.



43 Bicycle holder (Barracuda)
E361ESA501
Bike holder with aerodynamic design, easy bike installation.
*Carrier base required.



44 Rear bicycle holder (Installed on tow ball)
E365EFG600 / E365EFG700
Transports 2 bikes on tow ball.
*Trailer hitch needed.



45 Rear bicycle holder (Installed on tow ball)
E365EFG800 / E365EFG900
Transports 3 bikes on tow ball.
*Trailer hitch needed.



46 Trailer hitch (Fixed, Detachable)
See application list (page 16)
Maximum towing capacity 2,000 kg.

Image: vehicle is presented with Front grille, Front under spoiler, Carrier base and Transport box (Long)

Utility/Interior



47 Cargo mat
J515EAG000
Protects cargo area. Carpet with air cleaning function.



48 Cargo tray (Sedan, Wagon)
J511EAG010, J511EAG000
Protects cargo area floor from dust and dirt.



49 Deep cargo tray
J511EAG100
Extra protection for the load area. Suitable for fishing and hunting.



50 Cargo net
F551EAG200, F551EAG100, F551EAG300
For a clean and tidy luggage area.



51 Dog guard (G/M)
F551EAG011
Separates cargo room from passenger area, applicable for ISOFIX child seat.



52 Dog guard (K/M)
F551EAG000
Separates cargo room from passenger area, applicable for ISOFIX child seat.



53 Rear sunshade (Side)
F505EAG100
Protects from sunshine and darkens your luggage compartment. Mesh type.



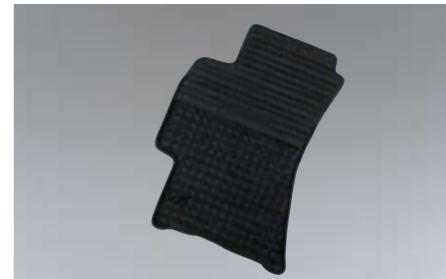
54 Rear sunshade (Rear)
F505EAG000
Protects from sunshine and darkens your luggage compartment. Mesh type.



55 Carpet mat Premium Black
J501EAG201 / J501EAG200RH
Custom fitted carpet mat with logo.
*Front & Rear set.



56 Carpet mat Standard
J501EAG101 / J501EAG100RH
Custom fitted carpet mat with logo.
*Front & Rear set.



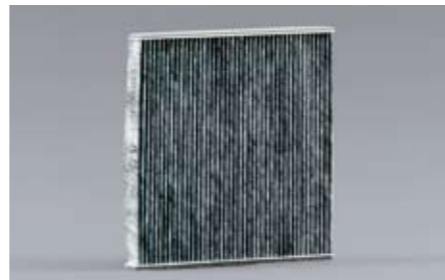
57 Rubber mat
J501EAG000 / J501EAG000RH
Heavy duty rubber mat protects carpet from mud and snow.
*Front & Rear set.



58 Over head console
J2010AG100
This ceiling compartment is equipped with a room lamp.
*For no sunroof vehicle.



59 Dual console box (Ivory, Black)
J2010AG020WA, J2010AG020JC
Extra storage within existing centre armrest console.
*J2010AG020WA: For Ivory interior.
J2010AG020JC: For Off-Black interior.



60 Anti dust filter (Charcoal)
G3010AG100
Helps to reduce dust and pollen infiltration, as well to neutralize outside odours. For the best result, it is recommended to replace the filter once a year or every 15,000 km.
*For the replacement of originally equipped filter.



61 Anti dust filter
72880AG000
Helps reduce dust and pollen infiltration into the vehicle cabin area. For the best result, it is recommended to replace the filter once a year or every 12,000 km.
*For the replacement of originally equipped filter.



62 Cargo socket kit
H6710AG000
Convenient 12-volt power outlet for outdoor activities etc.

Image: vehicle is presented with Cargo net, Cargo tray, Cargo room plate and Cargo step panel

Interior/Safety



Image: vehicle is presented with Aluminium shift knob, Round type ashtray and Dual console box.



63 Round type ashtray
F6010AG000
Cup type ashtray exactly fits the centre cup holder.



64 Cigarette lighter kit
H6010AG100
Change the accessory socket to a cigarette lighter.



68 Subwoofer
H630SAG000
Adds 120 watts of power, and delivers super bass sound you not only hear but feel.
*Not compatible with Macintosh audio.
AV tray is needed for installation under right side seat.



69 Acoustic parking aid
H481ESA002
Great help for easy parking. No drilling of the bumper required.



70 Child seat SUBARU Baby safe plus
F410EYA102
Includes sun canopy.
*Complies with Euro NCAP.



71 Child seat SUBARU Duo plus
F410EYA002
Secure installation by ISOFIX.
*Complies with Euro NCAP.



72 Child seat SUBARU KID plus
F410EYA212
Extra protection in case of side impact.
*Complies with Euro NCAP.

Child seat adaptation chart

	Weight	Age
SUBARU Baby safe plus	– 13 kg	0 – 15 M
SUBARU Duo plus	9 – 18 kg	8 M – 4 Y
SUBARU KID plus	15 – 36 kg	3 Y – 12 Y



FHI and STI have collaborated in order to create a concept of “total tuning” to emphasise the performance of the original vehicle.



73 STI, Pedal pad set L.H.D. (MT)
C8110AG000
Sporty looking set of pedals made of aluminium.
*Except for the models with factory installed aluminium pedals.



74 STI, Pedal pad set L.H.D. (AT)
C8110AG010
Sporty looking set of pedals made of aluminium.
*Except for the models with factory installed aluminium pedals.



75 STI, Side sill plate
E1010AG010
Replaces existing sill plates with a more sporty look.
*Front & Rear set.



76 STI, Short gear shift lever (5MT, 6MT)
C1010AG000, C1010AG100
Quick gear change and a more rigid & direct shift feeling. (Photo: 5MT)
*Except for Dual-range transmission vehicle.



65 Aluminium shift knob (MT)
C105EFE000
Stylish aluminium shift knob with Subaru logo.



66 Aluminium shift knob (AT)
C101ESA002
Stylish aluminium shift knob with Subaru logo.



67 AUX mini jack
H6210AG000
A 3.5 mm auxiliary stereo mini-pin jack socket that allows you to listen to the sounds from portable music players. Now you can enjoy your own music through the car speakers.



77 Front under spoiler (Outback)
E2410AG030 / E2410AG030MD

Gives an aggressive performance look.
*E2410AG030MD: For two-tone colour vehicle.



78 Splash guard (Front set/Outback)
J1010AG241

Helps protect your vehicle from mud and snow.
*Black colour.



79 Splash guard (Rear set/Outback)
J1010AG244

Helps protect your vehicle from mud and snow.
*Black colour.



80 Cargo step panel (Outback)
E7710AG011

Protects the rear boot lip when loading and unloading.



81 Alloy wheel, Grey (17 inch)
28111AG280



82 Alloy wheel, Lustrous silver (17 inch)
28111AG250



83 Alloy wheel 5-spoke (17 inch)
28111AG130



84 Alloy wheel 10-spoke (16 inch)
28111AE120



85 Carrier base (Outback)
E361EAG100

Perfectly fitting stylish base for carrier attachments.



86 Trailer hitch (Outback)
L101EAG061 / L101EAG071 / L101EAG070

Maximum towing capacity 2,000 kg.



87 Carpet mat Outback Premium Black
J501EAG211 / J501EAG210RH

Custom fitted carpet mat with logo.
*Front & Rear set.



OUTBACK | ACCESSORIES

