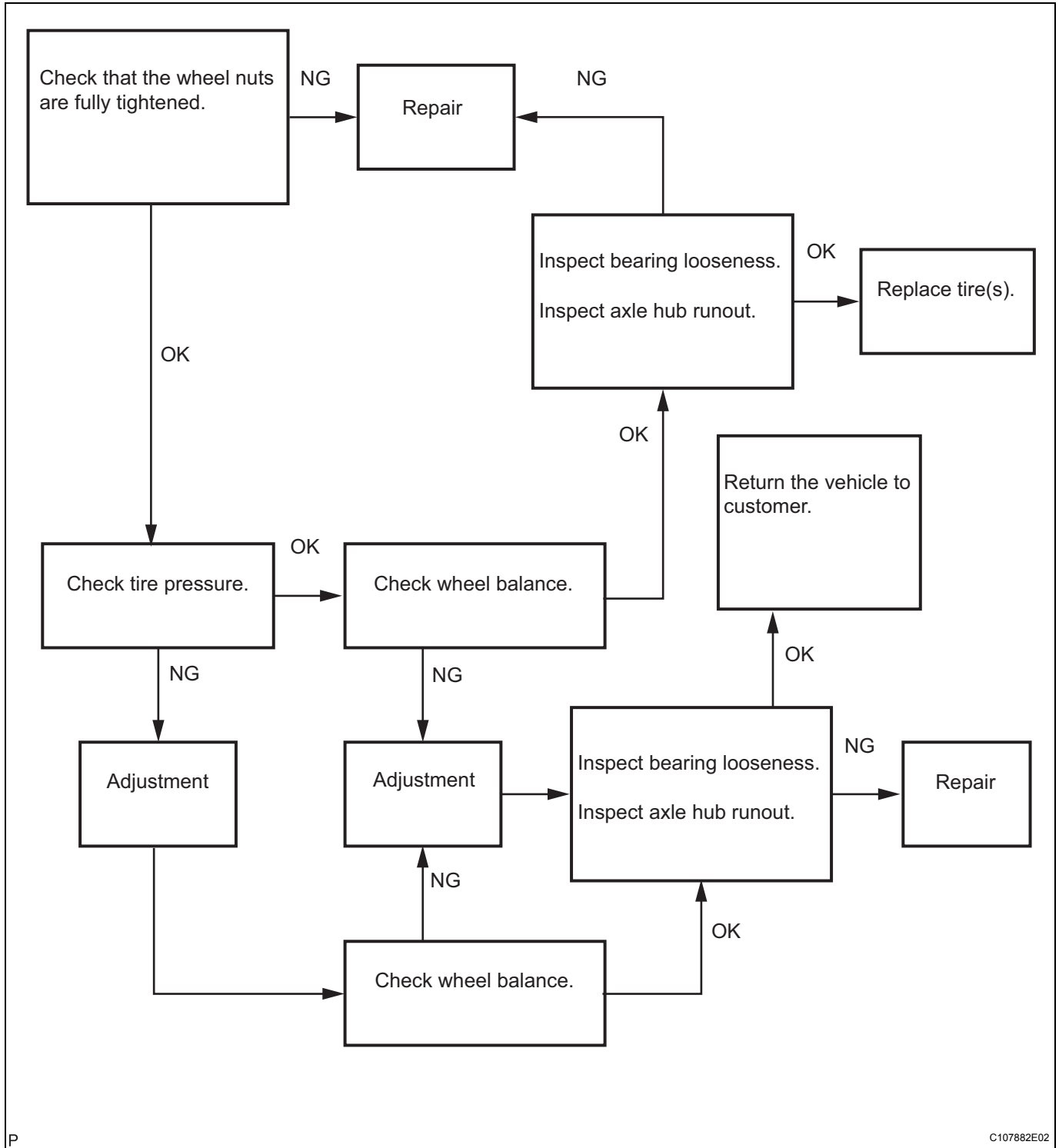


TIRE AND WHEEL SYSTEM

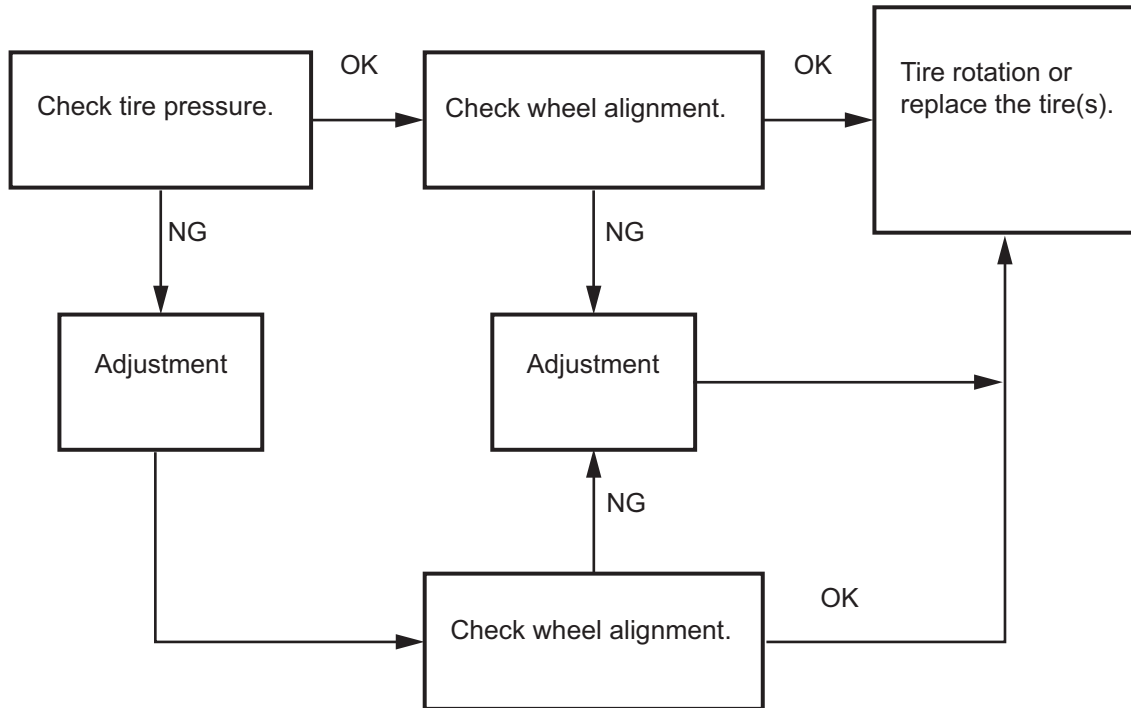
HOW TO PROCEED WITH TROUBLESHOOTING

1. VEHICLE PULLING DIAGNOSIS
2. DIAGNOSIS OF TIRE VIBRATION



TW

3. DIAGNOSIS OF IRREGULAR TIRE WEAR



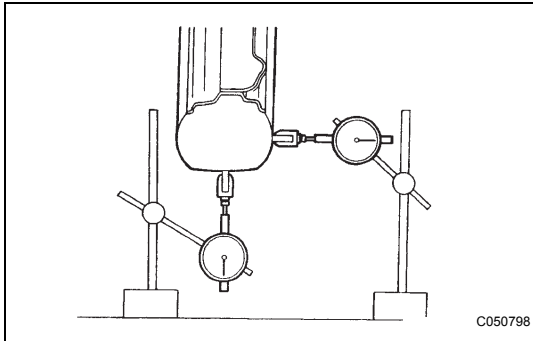
INSPECTION

1. INSPECT TIRE

- (a) Check the tires for wear and proper inflation pressure.

Cold tire inflation pressure

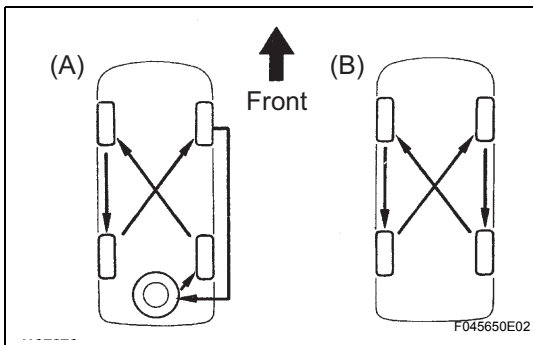
Tire size	Front kPa (kgf/cm ² , psi)	Rear kPa (kgf/cm ² , psi)
215/60R16 93 V	200 (2.0, 29)	200 (2.0, 29)
215/55R17 93 V	220 (2.2, 32)	220 (2.2, 32)



- (b) Using a dial indicator, check the tire runout.

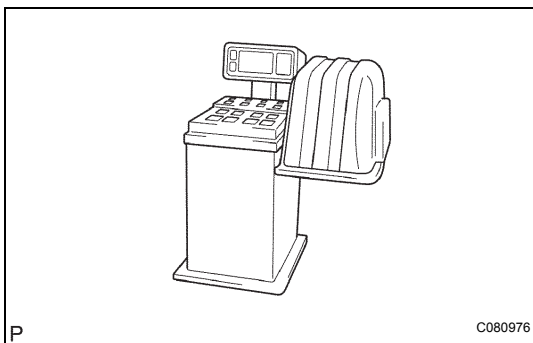
Tire runout:

1.4 mm (0.055 in.) or less



2. ROTATE TIRES

- (a) See the illustration for where to rotate each tire.



3. INSPECT WHEEL BALANCE

- (a) Check and adjust the off-the-car balance.
 (b) If necessary, check and adjust the on-the-car balance.

Imbalance after adjustment:

8.0 g (0.018 lb) or less

4. INSPECT BEARING LOOSENESS (See page [AH-15](#))

5. INSPECT AXLE HUB RUNOUT (See page [AH-15](#))

P

C080976

TW