

Engine & Cooling	Fuel	Ignition	Electrical	Running gear	Torque settings	Capacities	Notes & Illustrations
------------------	------	----------	------------	--------------	-----------------	------------	-----------------------



# Automotive Technical DATA BOOK

Click on one of the buttons above to view data for this car. To return to this screen and make another choice, click anywhere on the data screen.

**MENU**      **HELP**

### Engine and cooling system 323, 1.5 1987 to 1991

Type	B5. SOHC	
Capacity (cm <sup>3</sup> ) / number of cylinders	1498 / 4	
Compression ratio / pressure	bar	9.1 / ≥9.5
Oil pressure	bar	[3.5 to 4.4]
Oil temperature	°C	–
Valve clearance - inlet	mm	0: Hyd.
Valve clearance - exhaust	mm	0: Hyd.
Firing order	1-3-4-2	
No 1 cylinder position	TBE	
Thermostat opening temperature	°C	82
Radiator cap pressure	bar	0.76 to 1.04

### Fuel system 323, 1.5 1987 to 1991

Idle speed - manual [auto]	rpm	850±50 [1000±50]
Fast idle speed - manual [auto]	rpm	–
CO @ idle speed [3000 rpm] - see page VI	%	≤0.3
HC @ idle speed [3000 rpm] - see page VI	ppm	≤200
CO <sub>2</sub> @ idle speed [3000 rpm] - see page VI	%	–
O <sub>2</sub> @ idle speed [3000 rpm] - see page VI	%	–
Carburettor / fuel injection	Aisan	
Type / ref	28-32 2V Downdraught	
Main jet / needle	91, 156	
Injection pressure	bar	–
Pump pressure	bar	0.28 to 0.35
Octane rating	RON	91[E 91 RON]

### Ignition system 323, 1.5 1987 to 1991

Type	Electronic <sup>1</sup>	
Ignition coil	–	
Primary resistance	ohms	1.04 to 1.27
Ballast resistor	ohms	–
Voltage - Tmnl 15(+) to earth	V	–
Distributor	–	
Points gap (air gap)	mm	–
Dwell angle	° (%)	–
Condenser capacity	µF	–
Rotation	Anticlockwise	
Ignition timing - basic [static	° Crankshaft @ rpm	6±1 BTDC @ idle
V = Vacuum    NV = No Vacuum	NV	
Total ignition advance	° Crankshaft @ rpm	–
Centrifugal check.	° Crankshaft @ rpm	–2 to +2 @ 1200
Vacuum range check	° Crankshaft @ rpm	18 to 22 @ 3500
Maximum vacuum advance	° Crankshaft @ rpm	24 to 28 @ 5500
Maximum vacuum advance	mbar	240 to 640
Maximum vacuum advance	° Crankshaft	14
Spark plugs	NGK/Champion	
Type	BPR6ES / RN9YC	
Electrode gap	mm	0.75 to 0.85

### Electrical system 323, 1.5 1987 to 1991

Battery	V / CC / RC	12 / 150 / 55
Alternator voltage / full load current / engine rpm	14.1 to 14.7 / _ / 2500	
Starter motor current / voltage - cranking	A / V	60 / 11.5 (no load)
- locked	A / V	–

### Running gear 323, 1.5 1987 to 1991

<b>Brakes -</b>		
Front (min. friction material thickness)	mm	2.0
Rear (min. friction material thickness)	mm	1.0
<b>Tyres</b>		
Saloon	Size	155x13: 175/70x13
Estate / Van	Size	155x13: 175/70x13
Pressure - front / rear - Saloon	bar	1.8 / 1.8
- Estate / Van	bar	2.0 / 1.8
<b>Front suspension / wheel alignment</b>		
Toe-in (+) / Toe-out (-)	mm [°]	+2.0±3.0
Camber	+49'±30'	
Castor	+2°9'±45'. Est: +1°35'±45'	
King pin inclination	+12°22'	
<b>Rear suspension / wheel alignment</b>		
Toe-in (+) / Toe-out (-)	mm [°]	+2.0±3.0
Camber	-5'±45'	

### Torque wrench settings 323, 1.5 1987 to 1991

Cylinder head - stage 1	Nm	40
- stage 2	Nm	76 to 81
Cylinder head - stage 3	Nm	–
- stage 4	Nm	–
Big-end bearings	Nm	29 to 34
Main bearings	Nm	54 to 59
Clutch cover	Nm	18 to 26
Flywheel [driveplate]	Nm	96 to 103
Front hubs	Nm	WSM
Rear hubs	Nm	–
Wheel nuts / bolts	Nm	118
Spark plugs	Nm	15 to 23

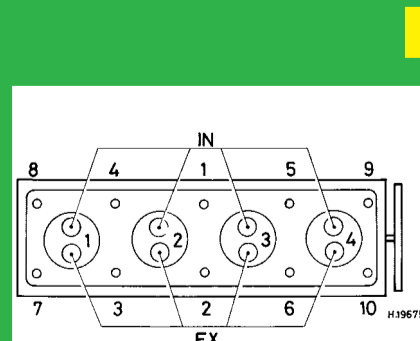
### Capacities 323, 1.5 1987 to 1991

Engine oil & filter	litres	3.3
Gearbox - 4-speed [5-speed]	litres	2.7
Automatic transmission - refill	litres	5.7
Final drive	litres	AT: 0.8
Cooling system	litres	5.0 [AT: 6.0]
Fuel tank	litres	48

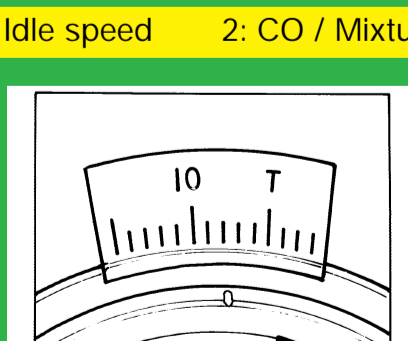
### Notes and Illustrations

<sup>1</sup>HEI type

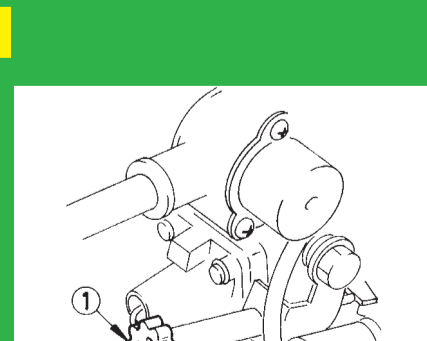
1: Idle speed      2: CO / Mixture



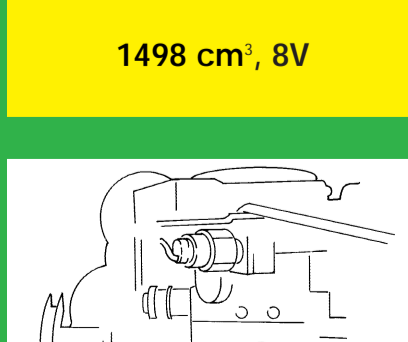
1498 cm<sup>3</sup>, 8V



1498 cm<sup>3</sup>, 8V



Aisan 28-32



Aisan 28-32