

# STEERING COLUMN SWITCHES

1998 Mitsubishi Galant

1998 ACCESSORIES & EQUIPMENT  
Mitsubishi - Steering Column Switches

Diamante, Eclipse, Galant, Mirage, Montero, Montero Sport,  
3000GT

## \* PLEASE READ THIS FIRST \*

**WARNING:** Deactivate air bag system before performing any service operation. See AIR BAG RESTRAINT SYSTEMS article. DO NOT apply electrical power to any component on steering column without first deactivating air bag system. Air bag may deploy.

## DESCRIPTION

Headlight and turn signal switch and wiper/washer switch are part of combination switch. For information on cruise control switch (right side of column), see appropriate CRUISE CONTROL SYSTEMS article.

## COMPONENT LOCATIONS

### COMPONENT LOCATIONS TABLE

Component	Location
Headlight Relay .....	In Engine Compartment Fuse/Relay Block
Foglight Relay Except Montero & Montero Sport ...	In Engine Compartment Fuse/Relay Block
Taillight Relay Except Montero Sport .....	In Engine Compartment Fuse/Relay Block
Turn Signal/Hazard Flasher Unit	
Diamante .....	At Left Kick Panel
Eclipse .....	Behind Center Of Dash
Except Diamante & Eclipse .....	Behind Left Side Of Dash
Wiper Relay	
Front	
Except Diamante & 3000GT .....	On Steering Column
Rear	
Eclipse .....	Behind Center Of Dash
Montero & Montero Sport .....	On Relay Block, Behind Left Side Of Dash
3000GT .....	Behind Left Rear Quarter Panel

## COMPONENT TESTS

### DIAMANTE

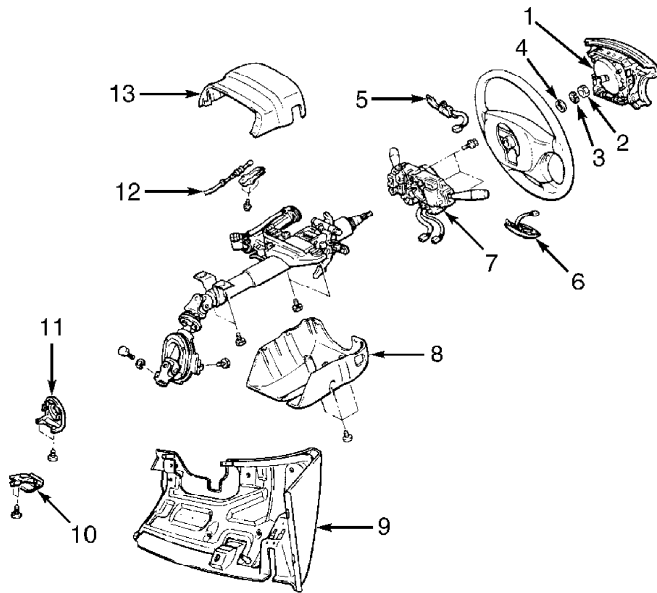
Turn Signal, Lighting & Dimmer/Passing Switch Tests  
Disconnect steering column combination switch connector. See Fig. 1. Check continuity between specified terminals. See STEERING COLUMN COMBINATION SWITCH CONTINUITY CHECK TABLE (DIAMANTE).

If continuity is not as specified, replace steering column combination switch.

STEERING COLUMN COMBINATION SWITCH CONTINUITY CHECK TABLE (DIAMANTE)

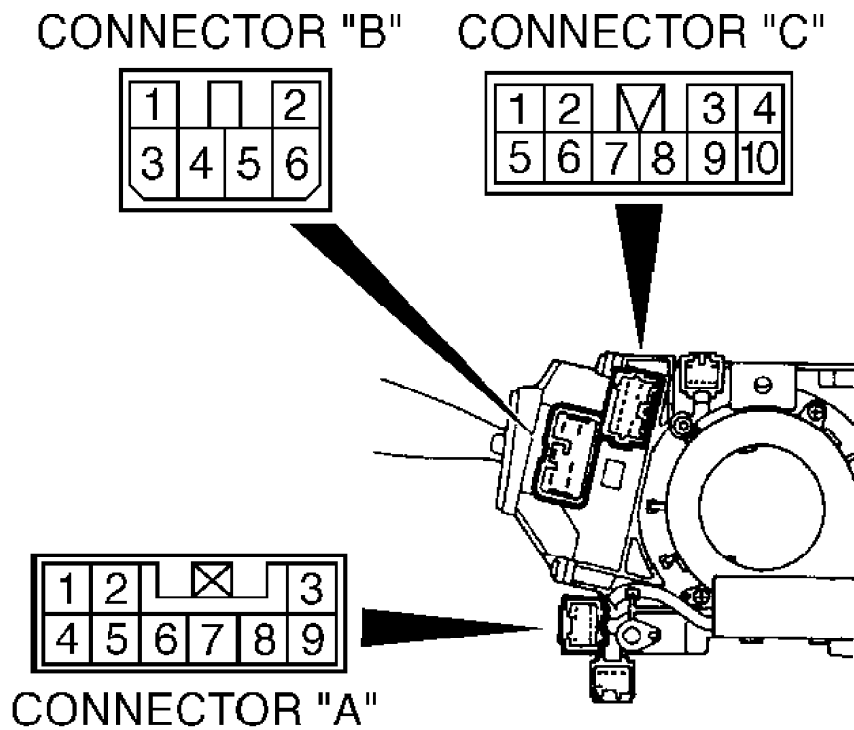
Switch & Position	Check Continuity Between Terminals No.
Lights Switch (1)	
Foglight ON .....	3 & 7
Headlight ON .....	2, 5 & 8
Taillight ON .....	5 & 8
Dimmer Switch (2)	
Low Beam .....	3 & 4
High Beam .....	4 & 6
Passing	
Low Beam .....	1, 2 & 6; 3 & 4
High Beam .....	1, 2 & 6; 4 & 6
Turn Signal Switch (3)	
Left Turn .....	5 & 8
Right Turn .....	7 & 8

- (1) - Check at connector "A". See Fig. 2.
- (2) - Check at connector "B". See Fig. 2.
- (3) - Check at connector "C". See Fig. 2.



- 1. Air Bag Module
- 2. Steering Wheel Nut
- 3. Spring Washer
- 4. Flat Washer
- 5. Cruise Control Switch
- 6. Remote Control Switch
- 7. Steering Column Combination Switch & Clockspring Assembly
- 8. Lower Steering Column Cover
- 9. Lower Instrument Panel Cover
- 10. Lock Release Handle
- 11. Key Cylinder Panel
- 12. Key/Shift InterLock Cable
- 13. Upper Steering Column Cover

97C11850  
 Fig. 1: Exploded View Of Steering Column (Diamante)  
 Courtesy of Mitsubishi Motor Sales of America



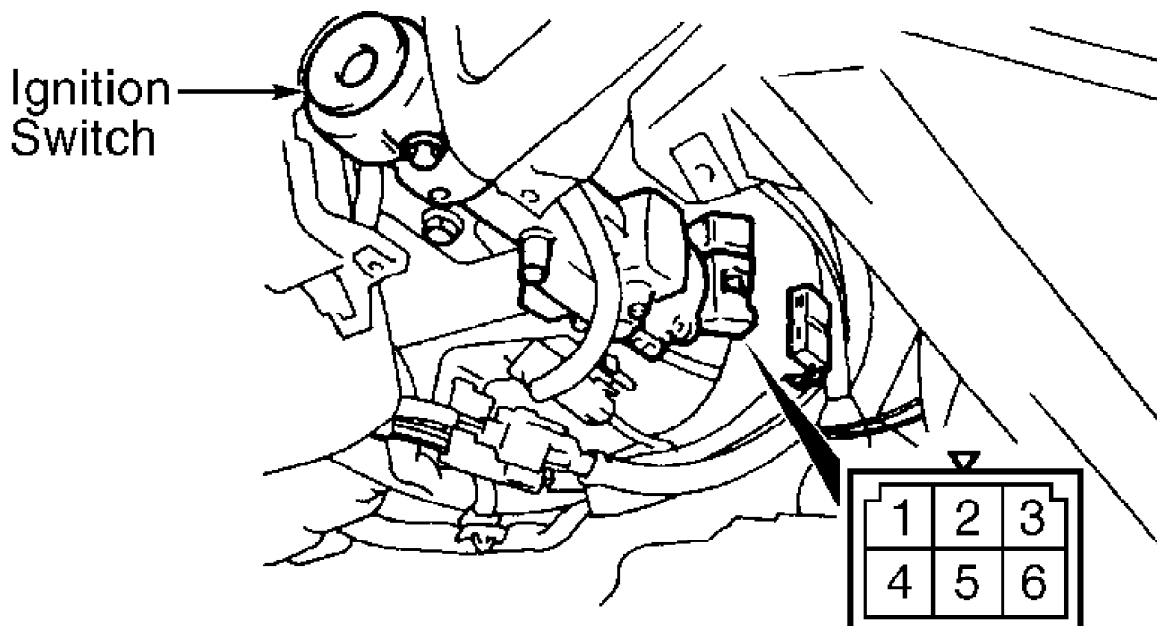
Switch position		Connector (A) terminal No.				Connector (B) terminal No.					
		2	5	8	9	1	2	3	4	6	
OFF											
Lighting Switch	Position taillight		○—○								
	Headlight	○—○—○									
Dimmer Switch	Low-beam							○—○			
	High-beam								○—○		
	PASSING	At low beam					○—○		○—○		○
		At high beam					○—○			○—○	○

97D11851

Fig. 2: Steering Column Switch Terminal Identification (Diamante)  
 Courtesy of Mitsubishi Motor Sales of America

Ignition Switch Test  
 Disconnect ignition switch connector. Check continuity

between specified terminals. See Figs. 1 and 3. If continuity is not as specified, replace ignition switch.



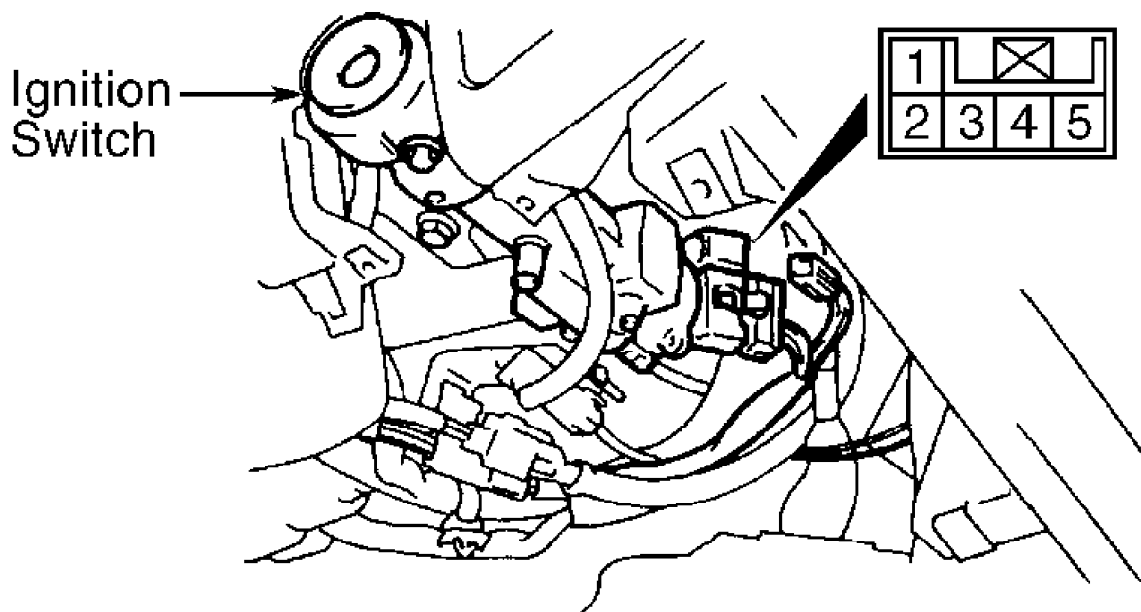
Ignition key position	Terminal No.					
	1	2	3	4	5	6
LOCK						
ACC	○	—	—	—	—	○
ON	○	○	—	○	—	○
START	○	○	○	—	○	

### 97E11852

Fig. 3: Testing Ignition Switch (Diamante)  
 Courtesy of Mitsubishi Motor Sales of America

#### Key Reminder Switch Test

Remove instrument panel lower cover. Disconnect key reminder switch harness connector. Check continuity between specified terminals with ignition key inserted and removed from ignition switch. See Fig. 4. If continuity is not as specified, replace key reminder switch.



Ignition key	Terminal No.	
	Key reminder switch	
	2	5
Removed	○	○
Inserted		

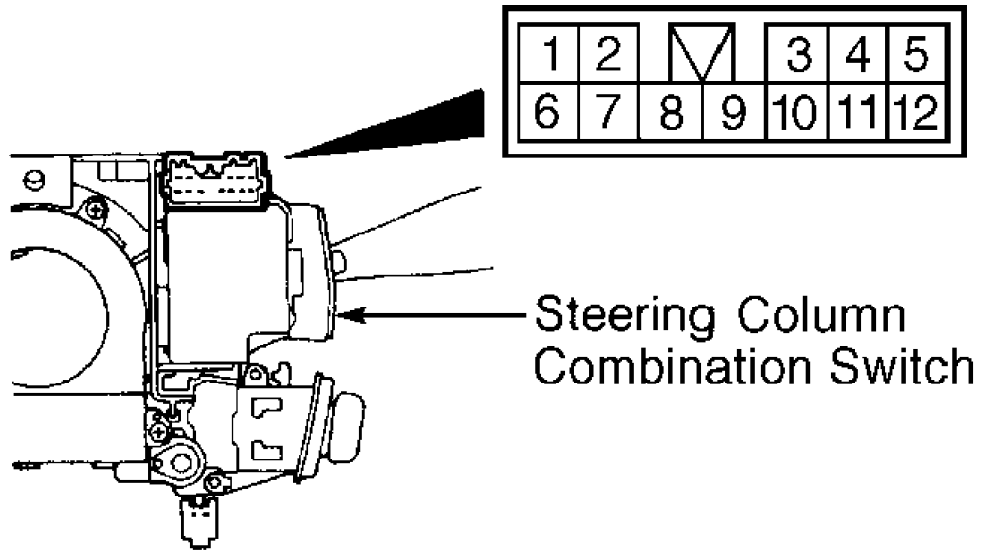
### 97F11853

Fig. 4: Testing Key Reminder Switch (Diamante)  
 Courtesy of Mitsubishi Motor Sales of America

#### Wiper/Washer Switch Tests

Disconnect steering column combination switch connector.

Check continuity between specified terminals. See Fig. 5. If continuity is not as specified, replace wiper/washer switch.



Switch position		Terminal Numbers						
		3	7	8	9	10	11	6
Wiper switch	OFF							
	INT		○				○	
	LO			○		○		
	HI				○	○		
Intermittent variable speed switch		○					○	
Washer switch ON						○		○

97G11854

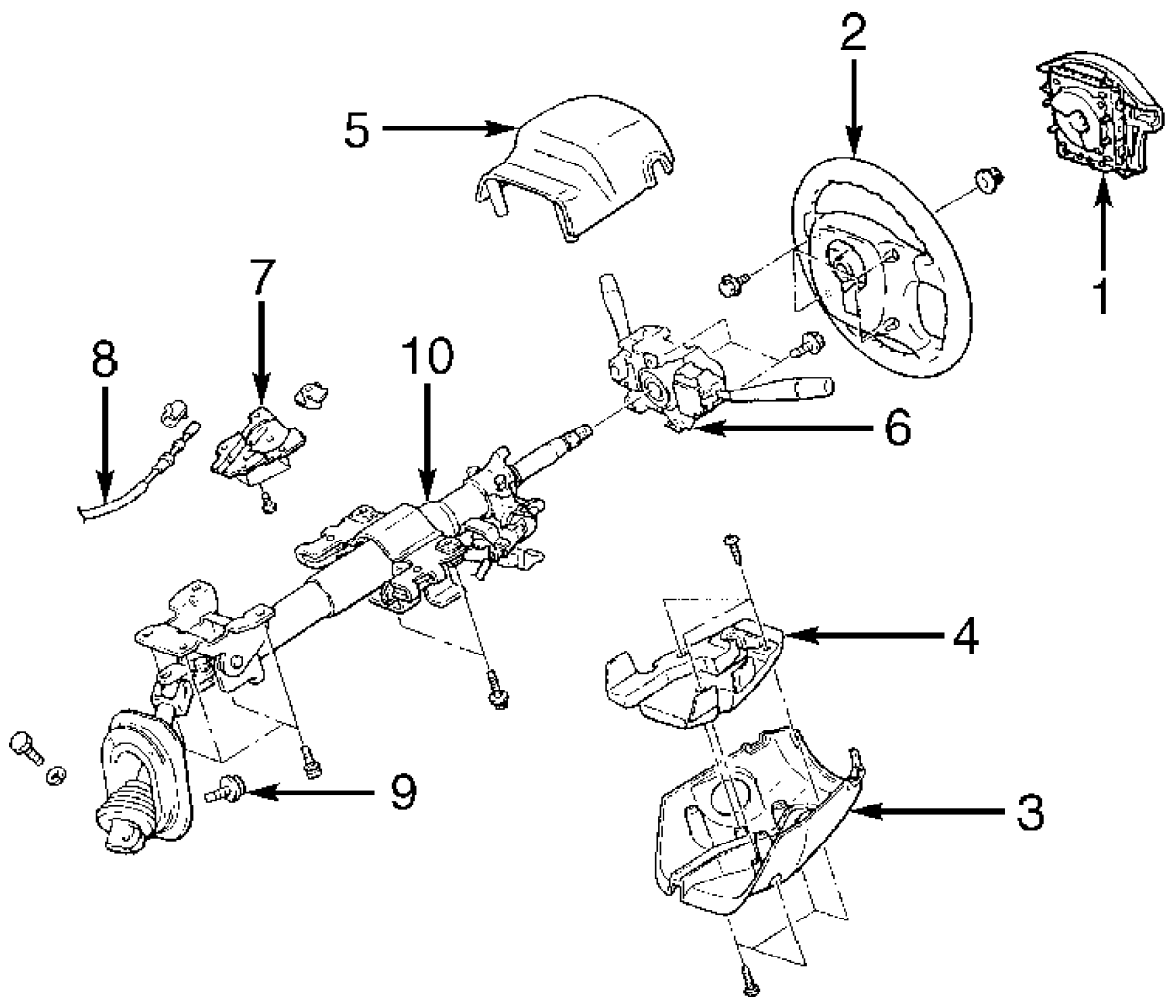
Fig. 5: Testing Wiper/Washer Switch (Diamante)  
 Courtesy of Mitsubishi Motor Sales of America

### ECLIPSE

#### Lighting & Turn Signal Switch Tests

Disconnect steering column combination switch connector.

Check continuity between specified terminals. See Figs. 6 and 7. If continuity is not as specified, replace steering column combination switch.

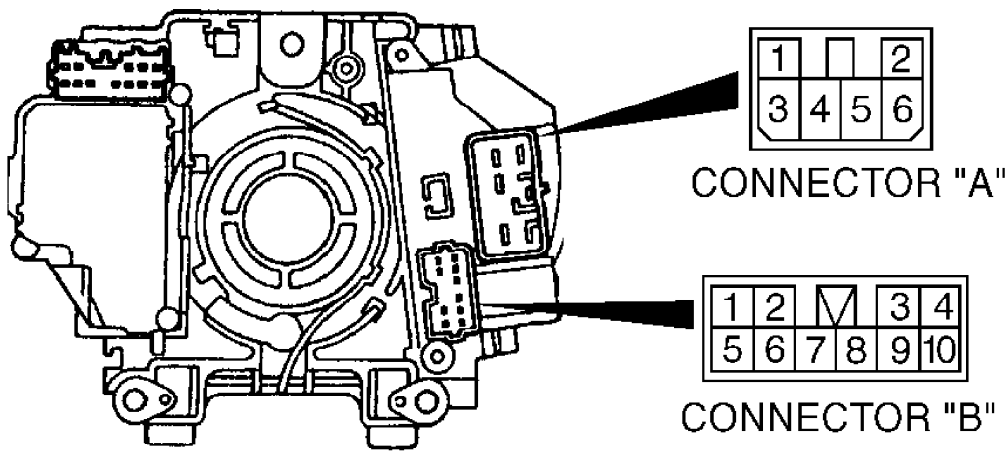


- 1. Air Bag Module
- 2. Steering Wheel
- 3. Lower Column Cover
- 4. Column Pad
- 5. Upper Column Cover

- 6. Clockspring & Column Switch Assembly
- 7. Shift Lock Cover
- 8. Interlock Cable
- 9. Retainer Bolt
- 10. Steering Column Assembly

96B06955

Fig. 6: Exploded View Of Steering Column (Eclipse)  
 Courtesy of Mitsubishi Motor Sales of America



Switch position		Connector A— terminal No.					Connector B— terminal No.					
		1	2	3	4	6	3	5	6	7	8	9
LIGHTING SWITCH	OFF											
	TAIL							○	—	○		
	HEAD	○						○	—	○		
DIMMER/ PASSING SWITCH	LOWER			○	○							
	UPPER				○	○						
	PASSING	○	○	○	○ <sup>*1</sup>	○ <sup>*2</sup>						
TURN-SIGNAL LAMP SWITCH	RH										○	○
	OFF											
	LH						○	—	○			

**NOTE**

- \*1 indicates continuity when the dimmer switch in the lower beam position.
- \*2 indicates continuity when the dimmer switch in the upper beam position.

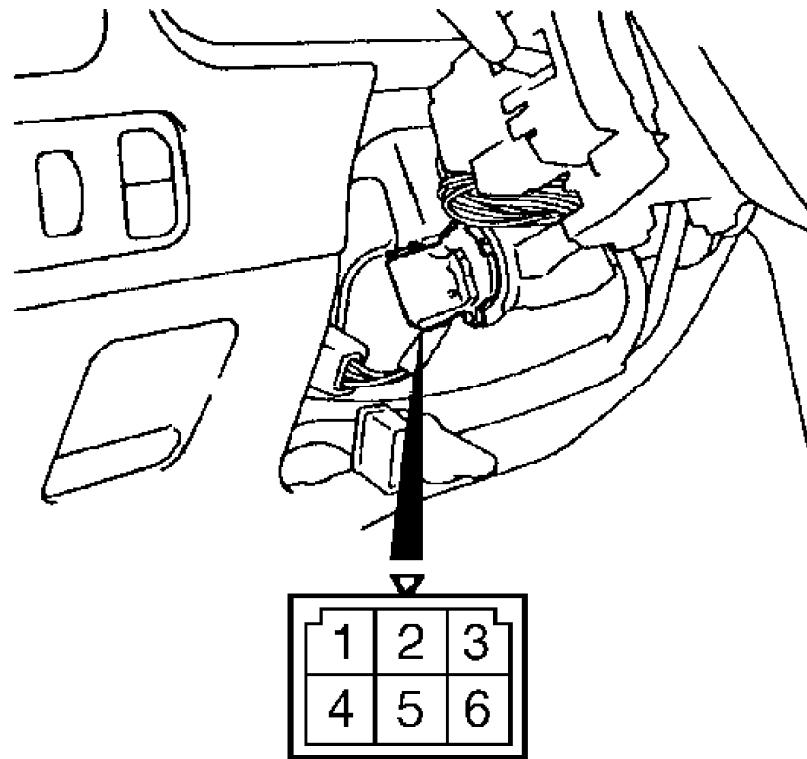
97H11855

Fig. 7: Testing Lighting & Turn Signal Switches (Eclipse)  
 Courtesy of Mitsubishi Motor Sales of America

Ignition Switch Test  
 Disconnect ignition switch connector. Check continuity



between specified terminals. See Figs. 6 and 8. If continuity is not as specified, replace ignition switch.



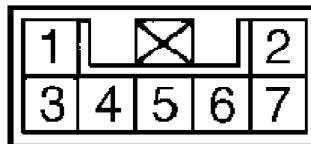
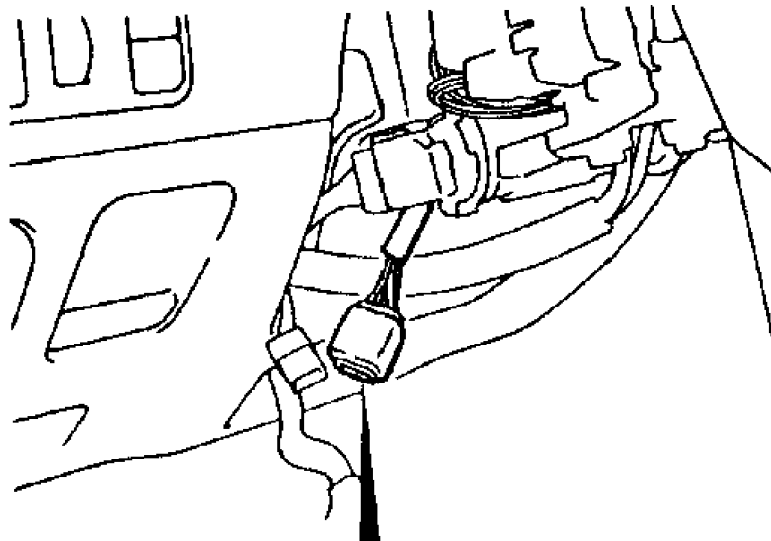
Ignition key position	Terminal No					
	1	2	3	4	5	6
LOCK						
ACC	○					○
ON	○	○		○		○
START	○	○	○		○	

### 96G06953

Fig. 8: Testing Ignition Switch (Eclipse)  
 Courtesy of Mitsubishi Motor Sales of America

#### Key Reminder Switch Test

Disconnect key reminder switch connector. Check continuity between specified terminals. See Figs. 6 and 9. If continuity is not as specified, replace key reminder switch.



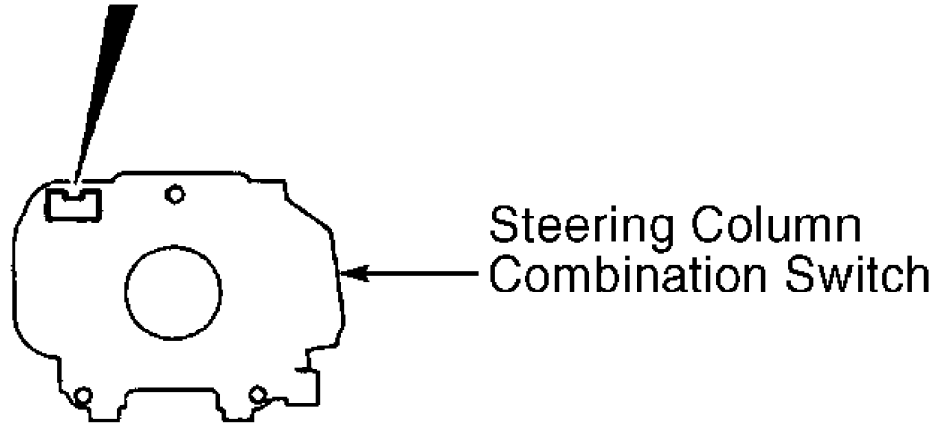
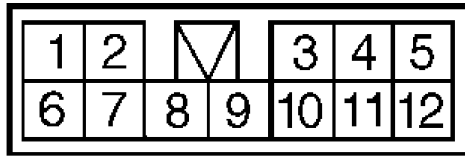
Ignition key position	Terminal No.			
	Key reminder switch		Key hole illumination light	
	4	6	1	2
Removed	○ — ○	○ — ○	○ — ⊙ — ○	
Inserted				

96106954

Fig. 9: Testing Key Reminder Switch (Eclipse)  
 Courtesy of Mitsubishi Motor Sales of America

Wiper/Washer Switch Tests

Disconnect steering column combination switch connector.  
 Check continuity between specified terminals. See Figs. 6 and 10. If  
 continuity is not as specified, replace wiper/washer switch.



Switch position		Terminal No.				
		6	7	8	9	10
Wiper switch	OFF		○—○			
	INT		○—○			
	1 (LO)			○—○		
	2 (HI)				○—○	
Washer switch	ON	○—○				

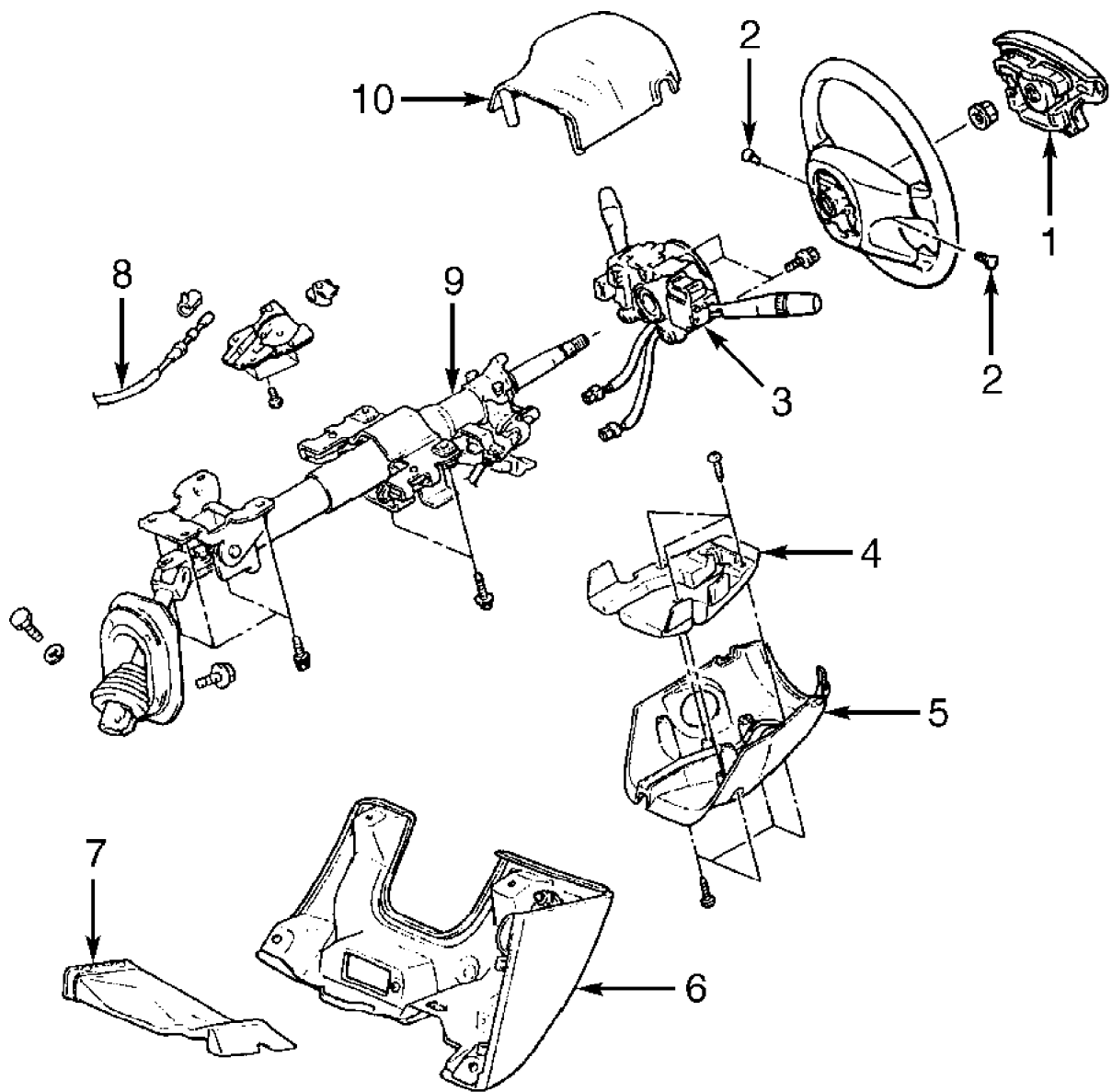
97111856

Fig. 10: Testing Wiper/Washer Switch (Eclipse)  
 Courtesy of Mitsubishi Motor Sales of America

**GALANT**

**Ignition Switch Tests**

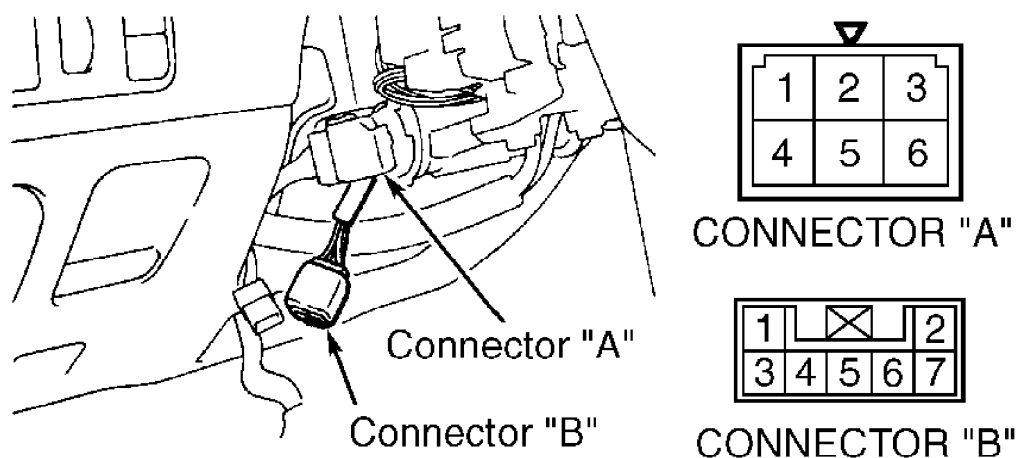
Disconnect ignition switch harness connector. Check continuity between specified terminals. See Figs. 11 and 12. If continuity is not as specified, replace ignition or key reminder switch.



- |  |                                 |
|--|---------------------------------|
| 1. Air Bag Module  | 6. Lower Instrument Panel Cover |
| 2. Air Bag Mounting Bolt                                       | 7. Foot Duct                    |
| 3. Steering Column Combination<br>Switch & Air Bag Clockspring | 8. Key Interlock Cable (A/T)    |
| 4. Column Pad  | 9. Steering Column Assembly     |
| 5. Lower Steering Column Cover                                 | 10. Upper Steering Column Cover |

97J11857

Fig. 11: Exploded View Of Steering Column (Galant)  
 Courtesy of Mitsubishi Motor Sales of America



### IGNITION SWITCH (CONNECTOR "A")

Terminal No.	1	2	3	4	5	6
Ignition key position						
LOCK						
ACC	○					○
ON	○	○		○		○
START	○	○	○		○	

#### NOTE

○—○ indicates that there is continuity between the terminals.

### KEY REMINDER SWITCH (CONNECTOR "B")

Terminal No.	Key reminder switch		Key hole illumination light	
	4	6	1	2
Ignition key				
Removed	○	○	○—○	
Inserted			○—○	

#### NOTE

○—○ indicates that there is continuity between the terminals.

96106671

Fig. 12: Testing Ignition Switch & Key Reminder Switch (Galant)  
 Courtesy of Mitsubishi Motor Sales of America

Key Reminder Switch Tests

Disconnect key reminder switch connector. Check continuity

between specified terminals. See Fig. 12. If continuity is not as specified, replace key reminder switch.

#### Lighting & Turn Signal Switch Tests

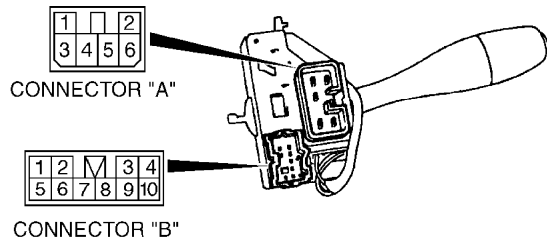
Disconnect steering column combination switch connector.

Check continuity between specified terminals. See STEERING COLUMN COMBINATION SWITCH CONTINUITY CHECK TABLE (GALANT). See Figs. 11 and 13. If continuity is not as specified, replace steering column combination switch.

#### STEERING COLUMN COMBINATION SWITCH CONTINUITY CHECK TABLE (GALANT)

Switch & Position	Check Continuity Between Terminals No.
Lights Switch	
Headlight ON	(1) 1 & (2) 6; (2) 5 & (2) 7
Taillight ON (2)	5 & 7
Dimmer Switch (1)	
Low Beam	4 & 6
High Beam	3 & 4
Passing	
Low Beam	1, 2 & 6; 3 & 4
High Beam	1, 2 & 6; 4 & 6
Turn Signal Switch (2)	
Left Turn	3 & 8
Right Turn	8 & 9

- (1) - Check at connector "A". See Fig. 13.  
 (2) - Check at connector "B". See Fig. 13.



Switch position	Connector A-terminal No.					Connector B-terminal No.					
	1	2	3	4	6	3	5	6	7	8	9
LIGHTING SWITCH	OFF										
	TAIL								○		○
	HEAD	○							○		○
DIMMER/PASSING SWITCH	HI			○	○						
	LOW				○	○					
	PASSING	○	○			○					

#### NOTE

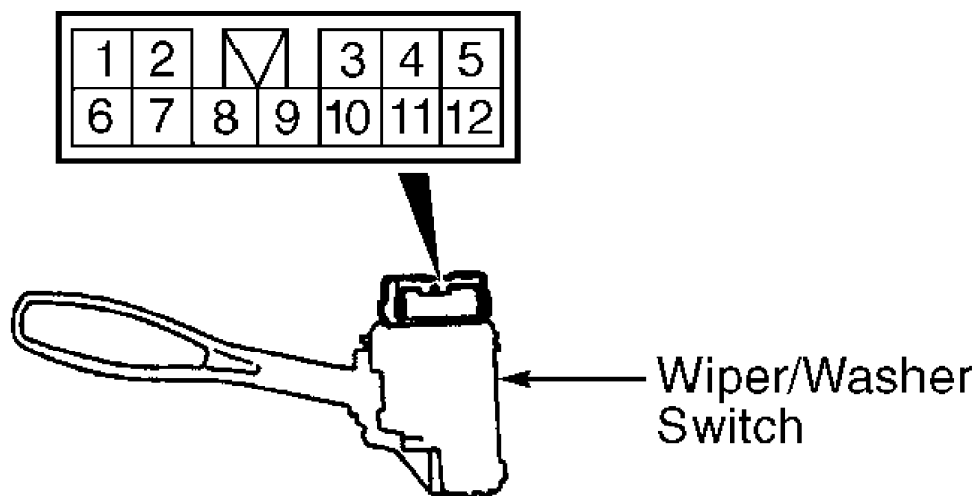
- \*1 indicates that the dimmer switch has continuity at the low-beam position.
- \*2 indicates that the dimmer switch has continuity at the high-beam position.

97B11859  
 Fig. 13: Identifying Lighting & Turn Signal Switches (Galant)  
 Courtesy of Mitsubishi Motor Sales of America

#### Wiper/Washer Switch Tests

Disconnect steering column combination switch connector.

Check continuity between specified terminals. See Figs. 11 and 14. If continuity is not as specified, replace wiper/washer switch.



Switch position		Terminal No.				
		6	7	8	9	10
Wiper switch	OFF		○—○			
	INT		○—○			
	1 (LO)			○—○		
	2 (HI)				○—○	
Washer switch	ON	○—○				

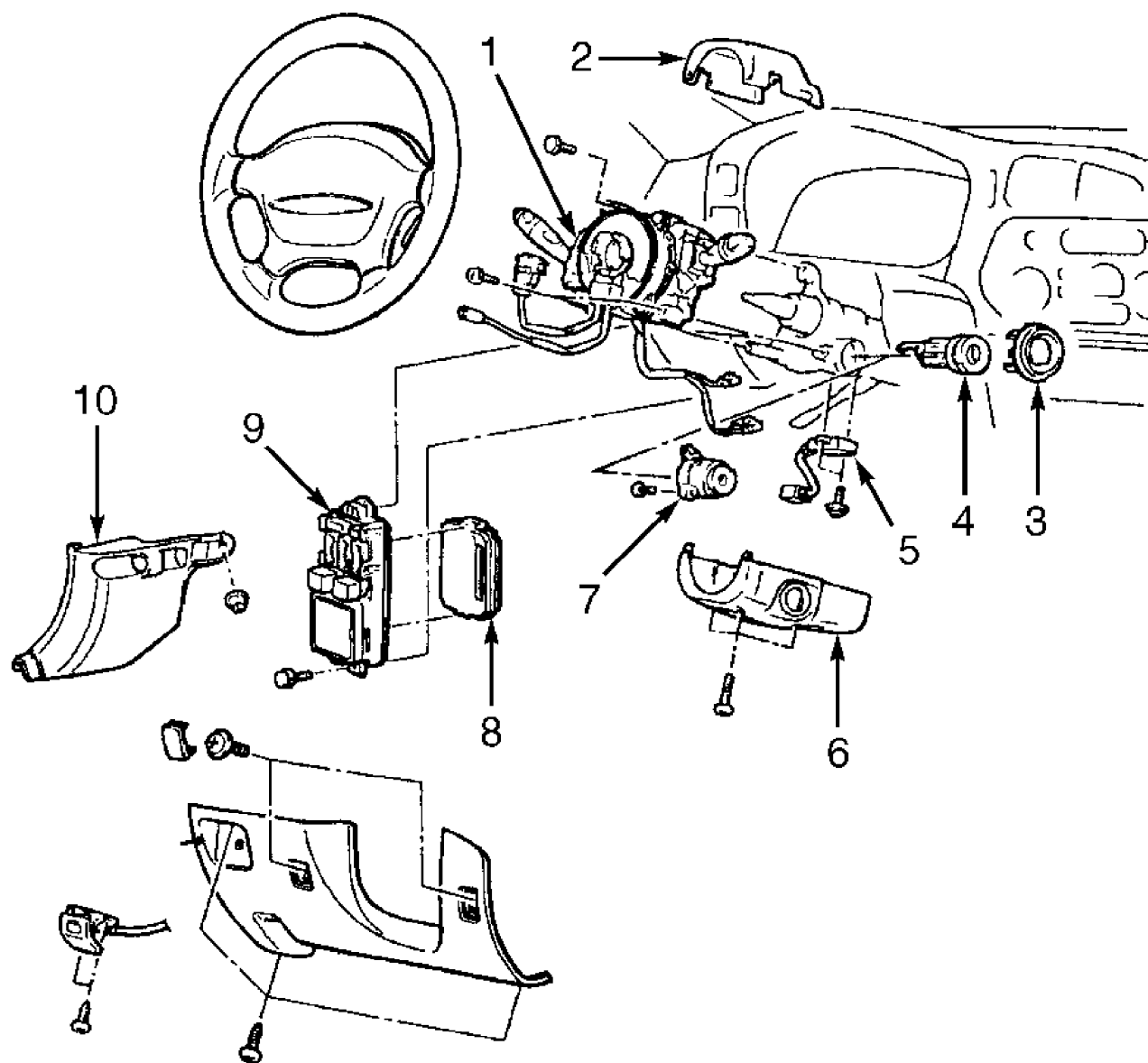
97E11860

Fig. 14: Testing Wiper/Washer Switch (Galant & Mirage)  
 Courtesy of Mitsubishi Motor Sales of America

### MIRAGE

#### Ignition Switch Test

Disconnect ignition switch connector. Check continuity between specified terminals. See Figs. 15 and 16. If continuity is not as specified, replace ignition switch.

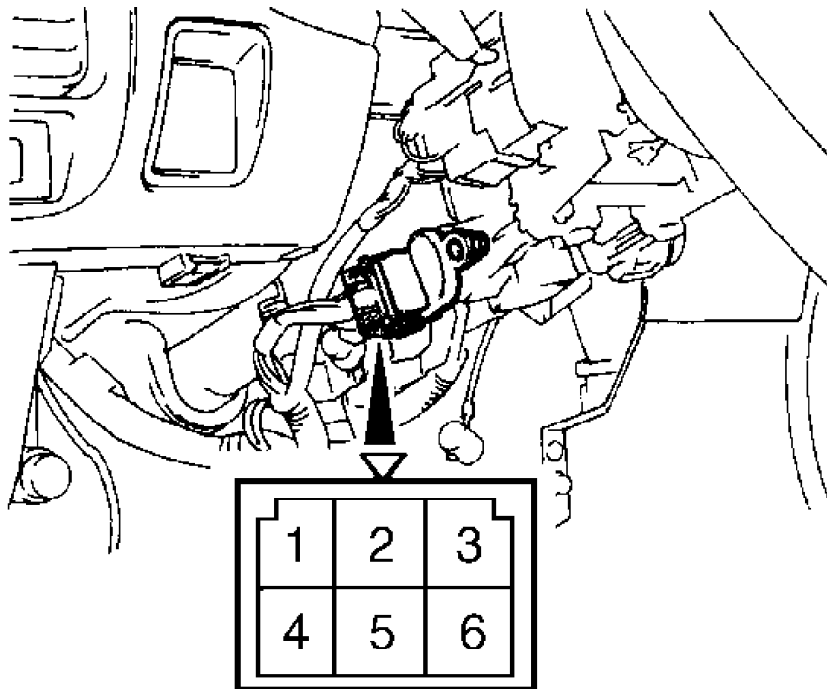


- |   |  |
|---|--|
| <ul style="list-style-type: none"> <li>1. Steering Column Combination Switch &amp; Air Bag Clockspring</li> <li>2. Upper Steering Column Cover</li> <li>3. Ignition Switch Ring Cover</li> <li>4. Steering Lock Cylinder</li> <li>5. Key Reminder Switch</li> </ul> | <ul style="list-style-type: none"> <li>6. Lower Steering Column Cover</li> <li>7. Ignition Switch</li> <li>8. ETACS-ECU</li> <li>9. Fuse/Relay Block</li> <li>10. Left Trim Panel</li> </ul> |
|---|--|

97H11871

Fig. 15: Exploded View Of Steering Column (Mirage)  
 Courtesy of Mitsubishi Motor Sales of America





## IGNITION SWITCH

Ignition key position	Terminal	1	2	3	4	5	6
	LOCK						
ACC			○—○			○	
ON		○—○	○—○	○—○		○	
START			○—○	○—○	○—○		○

### NOTE

○—○ indicates that there is continuity between the terminals.

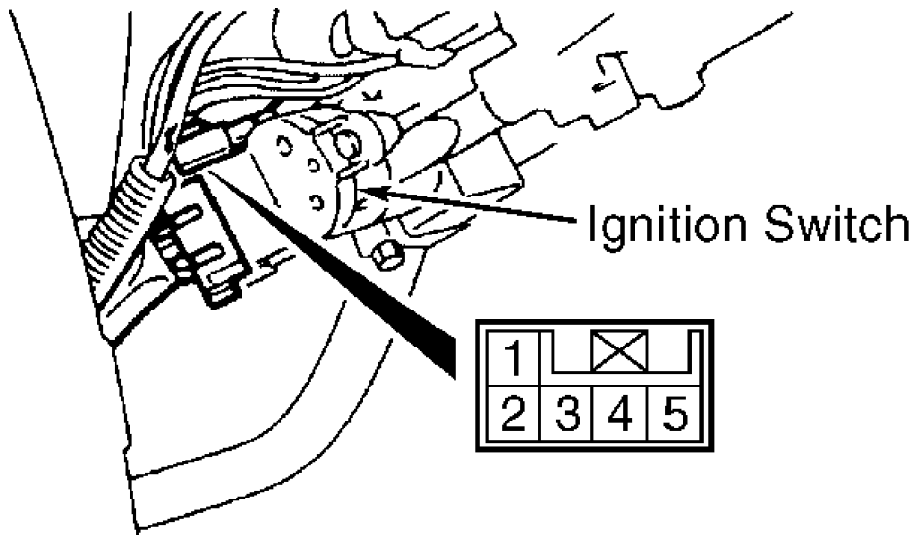
96F06679

Fig. 16: Testing Ignition Switch (Mirage)  
 Courtesy of Mitsubishi Motor Sales of America

### Key Reminder Switch Test

Disconnect key reminder switch connector. Check continuity between specified terminals. See Fig. 17. If continuity is not as

specified, replace key reminder switch.



Ignition key	Terminal No.	
	2	5
Removed	○	○
Inserted		

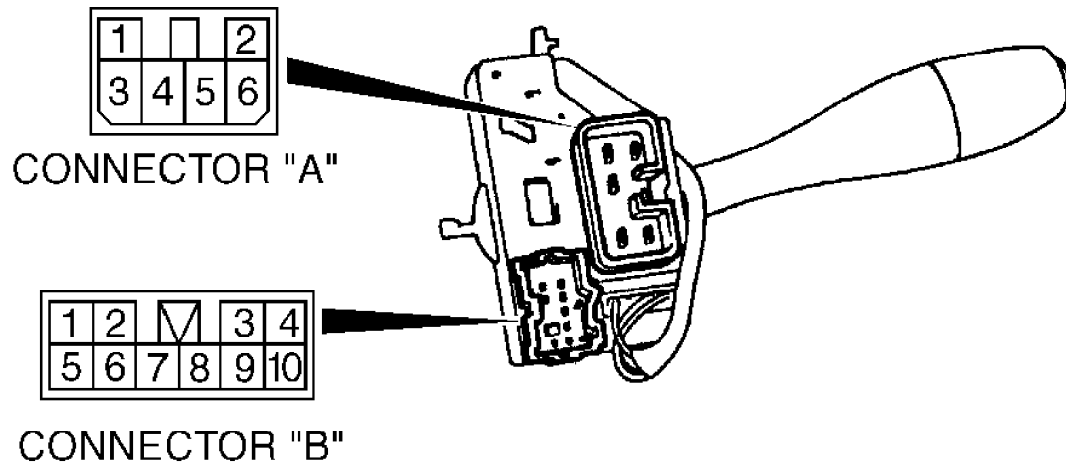
**97F11861**

Fig. 17: Testing Key Reminder Switch (Mirage)  
 Courtesy of Mitsubishi Motor Sales of America

Lighting & Turn Signal Switch Tests

Disconnect steering column combination switch connector.

Check continuity between specified terminals. See Figs. 15 and 18. If continuity is not as specified, replace steering column combination switch.



Switch position		Connector A— terminal No.					Connector B— terminal No.						
		1	2	3	4	6	3	5	6	7	8	9	
LIGHTING SWITCH	OFF												
	TAIL							○	—	○			
	HEAD	○	—					○	—	○			
DIMMER/ PASSING SWITCH	HI			○	—	○							
	LOW				○	—	○						
	PASSING	○	—	○	○	—	○						
TURN-SIGNAL LIGHT SWITCH	RH										○	—	○
	OFF												
	LH						○	—			○		

**NOTE**

- \*1 indicates continuity when the dimmer switch is at the low beam position.
- \*2 indicates continuity when the dimmer switch is at the high beam position.

97G11862

Fig. 18: Testing Lighting & Turn Signal Switches (Mirage)  
 Courtesy of Mitsubishi Motor Sales of America

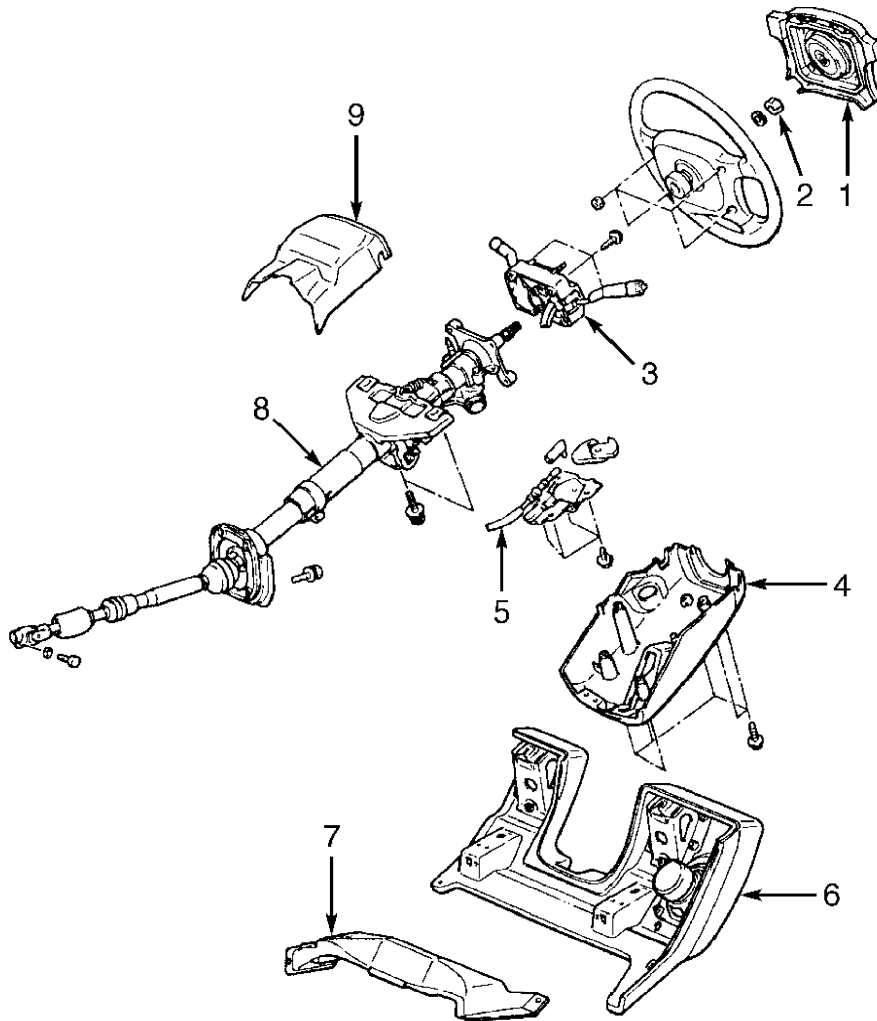
Wiper/Washer Switch Tests  
 Disconnect steering column combination switch connector.

Check continuity between specified terminals. See Fig. 14. If continuity is not as specified, replace wiper/washer switch.

## MONTERO

### Ignition Switch & Key Reminder Switch Tests

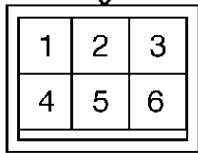
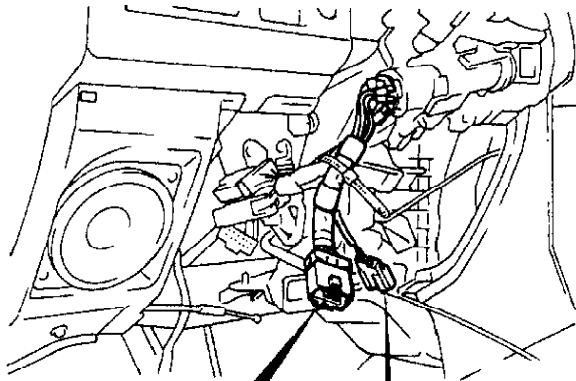
Disconnect ignition switch and key reminder switch connectors. Check continuity between specified terminals. See Figs. 19 and 20. If continuity is not as specified, replace ignition switch or key reminder switch.



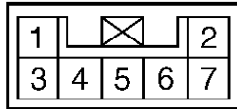
- |   |                                 |
|---|---------------------------------|
| 1. Air Bag Module   | 5. Key Interlock Cable          |
| 2. Steering Wheel Nut   | 6. Lower Instrument Panel Cover |
| 3. Steering Column Combination<br>Switch & Clockspring Assembly | 7. Foot Duct                    |
| 4. Lower Steering Column Cover                                  | 8. Steering Column Assembly     |
|   | 9. Upper Steering Column Cover  |

97111864

Fig. 19: Exploded View Of Steering Column (Montero)  
Courtesy of Mitsubishi Motor Sales of America



IGNITION SWITCH



KEY REMINDER SWITCH

IGNITION SWITCH

Position	Terminal					
	1	2	3	4	5	6
LOCK						
ACC	○					○
ON	○	○		○		○
START	○	○	○		○	

KEY REMINDER SWITCH

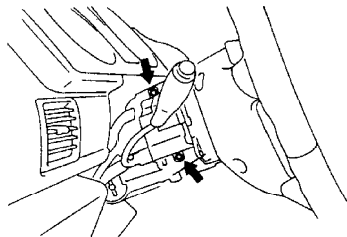
Key	Key reminder switch terminal		Key hole illumination light terminal	
	4	6	1	2
Removed	○	○	○	○
Inserted			○	Ⓞ

96A06950

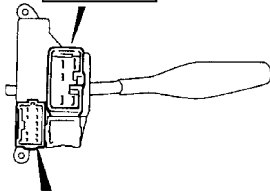
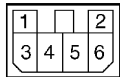
Fig. 20: Testing Ignition Switch & Key Reminder Switch (Montero)  
 Courtesy of Mitsubishi Motor Sales of America

Lighting & Turn Signal Switch Tests  
 Disconnect steering column combination switch connector.

Check continuity between specified terminals. See Figs. 19 and 21. If continuity is not as specified, replace steering column combination switch.



CONNECTOR "A"



CONNECTOR "B"

LIGHTING SWITCH

Switch position	Connector A terminal	Connector B terminal		
	1	5	6	7
OFF				
TAIL		○	○	○
HEAD	○	○	○	○

DIMMER SWITCH

Switch position	Connector A terminal		
	3	4	6
LOW BEAM	○	○	
HIGH BEAM		○	○

PASSING SWITCH

Switch position	Connector A terminal				
	1	2	3	4	6
P1	○	○	○	○	○
P2	○	○		○	○

TURN SIGNAL LIGHT SWITCH

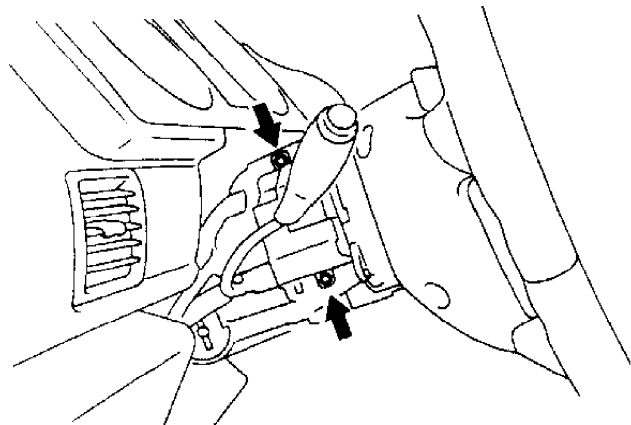
Switch position	Connector B terminal				
	1	3	4	8	9 10
R.H.				○	○
OFF					
L.H.		○	○		

96106949

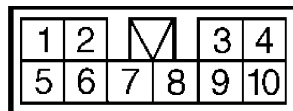
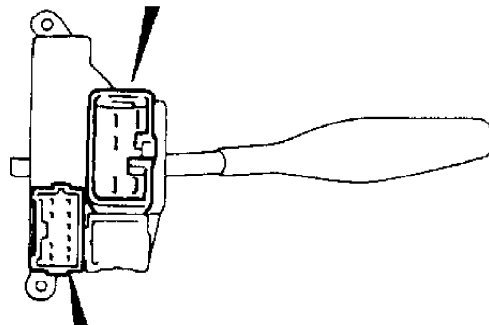
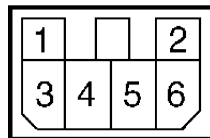
Fig. 21: Testing Lighting & Turn Signal Switches (Montero)  
 Courtesy of Mitsubishi Motor Sales of America

Headlight Washer Switch Test  
 Disconnect steering column combination switch connector.

Check continuity between specified terminals. See Figs. 19 and 22. If continuity is not as specified, replace steering column combination switch.



CONNECTOR "A"



CONNECTOR "B"

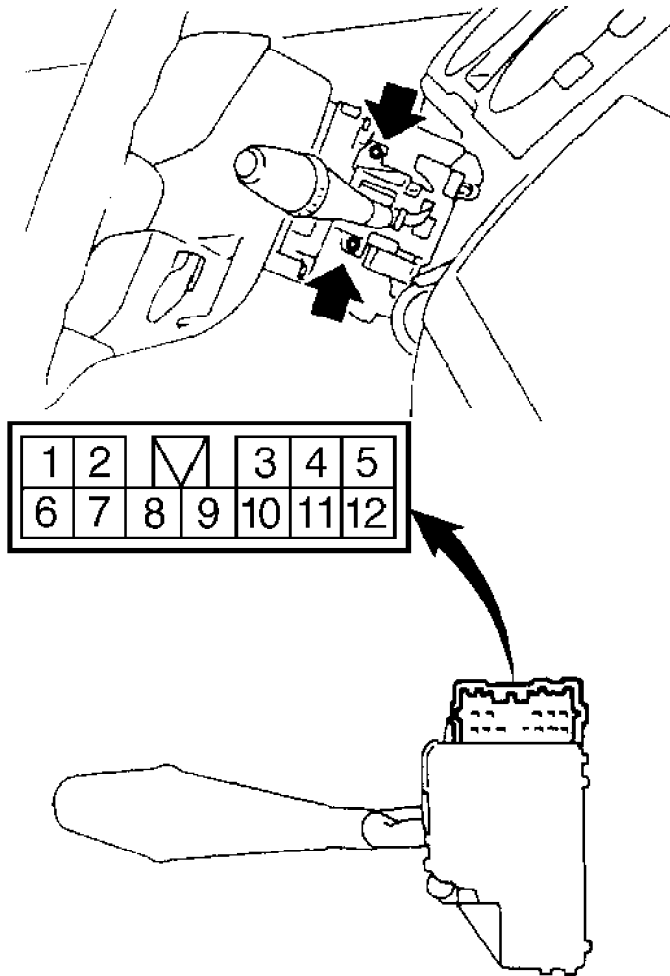
Switch position	Connector A terminal	Connector B terminal
	1	2
OFF		
ON		

96H06958

Fig. 22: Testing Headlight Washer Switch (Montero)  
 Courtesy of Mitsubishi Motor Sales of America

Rear Wiper Switch Test  
 Disconnect steering column combination switch connector.

Check continuity between specified terminals. See Figs. 19 and 23. If continuity is not as specified, replace steering column combination switch.



Switch position		Terminal			
		2	3	4	10
Wiper switch	OFF				
	INT		○	—	○
	ON			○	—
Washer switch	ON	○	—		○

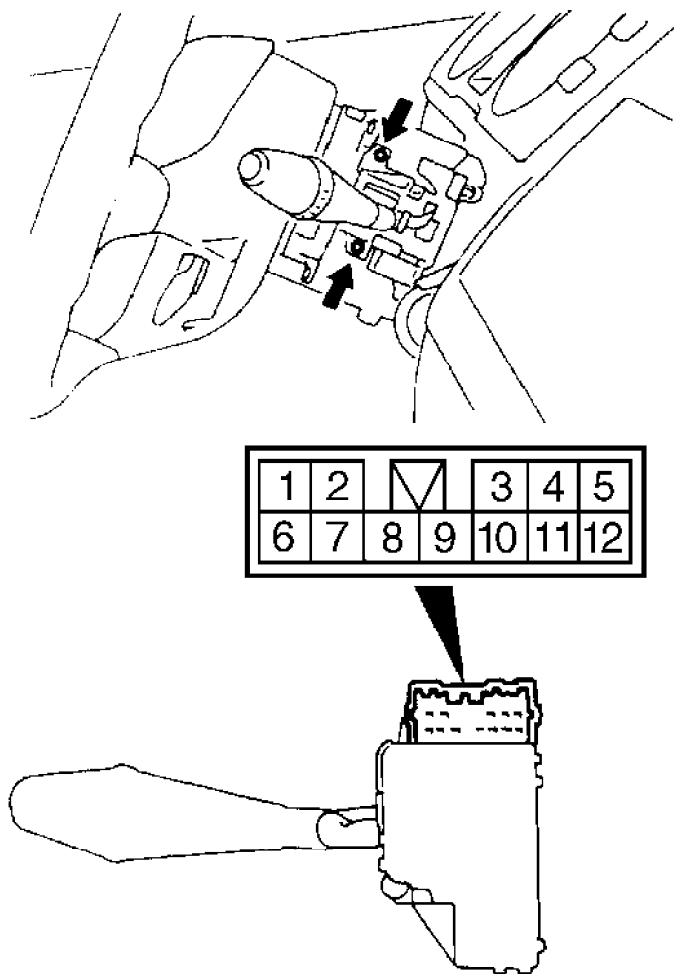
96G06948

Fig. 23: Testing Rear Wiper Switch (Montero)  
 Courtesy of Mitsubishi Motor Sales of America

Wiper/Washer Switch Test  
 Disconnect steering column combination switch connector.



Check continuity between specified terminals. See Figs. 19 and 24. If continuity is not as specified, replace steering column combination switch.



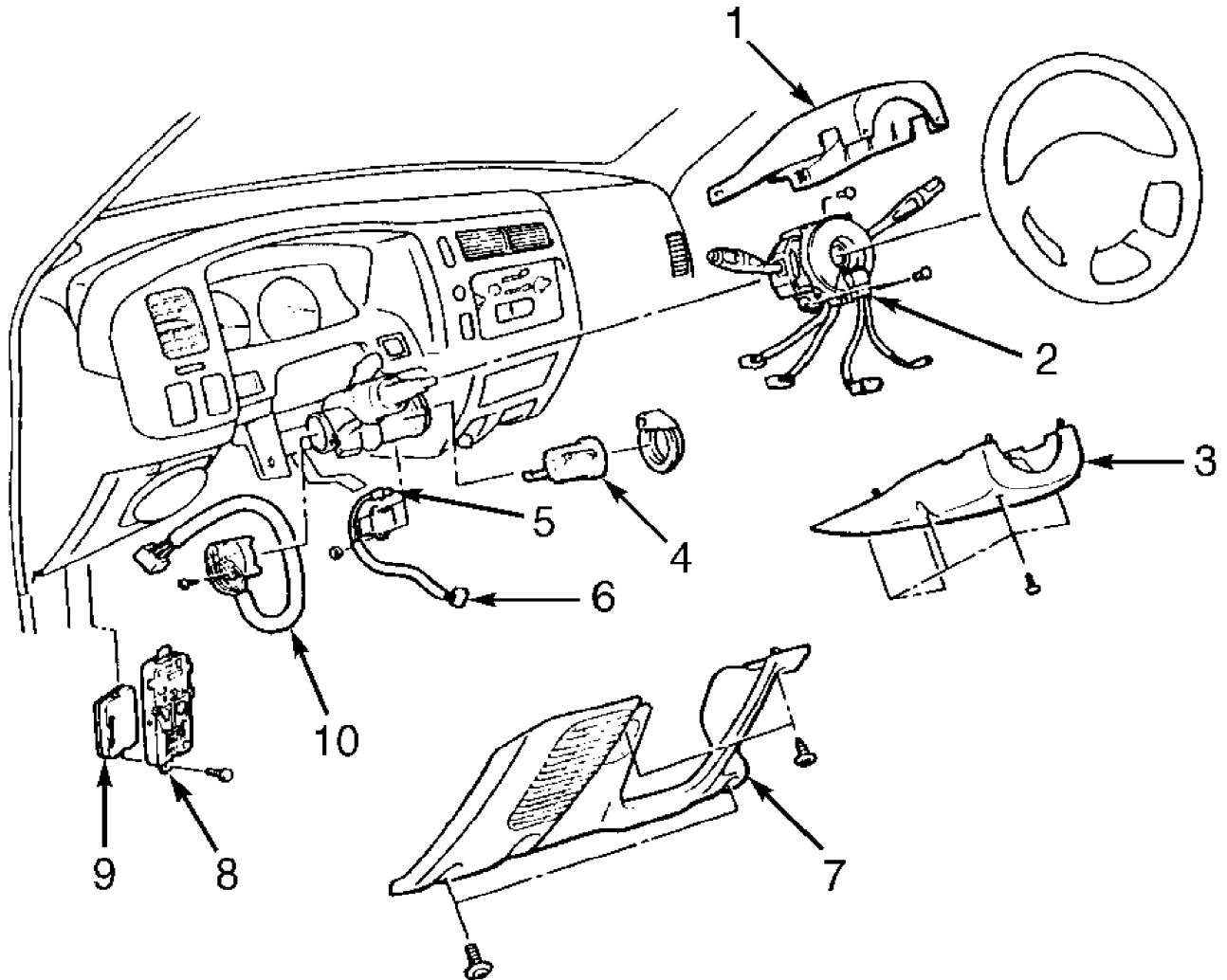
Switch position		Terminal				
		6	7	8	9	10
Wiper switch	OFF		○—○			
	1 (LO)			○—○		○
	2 (HI)				○—○	○
Washer switch	ON	○—○				○

96A06945

Fig. 24: Testing Wiper/Washer Switch (Montero)  
 Courtesy of Mitsubishi Motor Sales of America

### Ignition Switch Test

Disconnect ignition switch connectors. Check continuity between specified terminals. See Figs. 25 and 26. If continuity is not as specified, replace ignition switch.

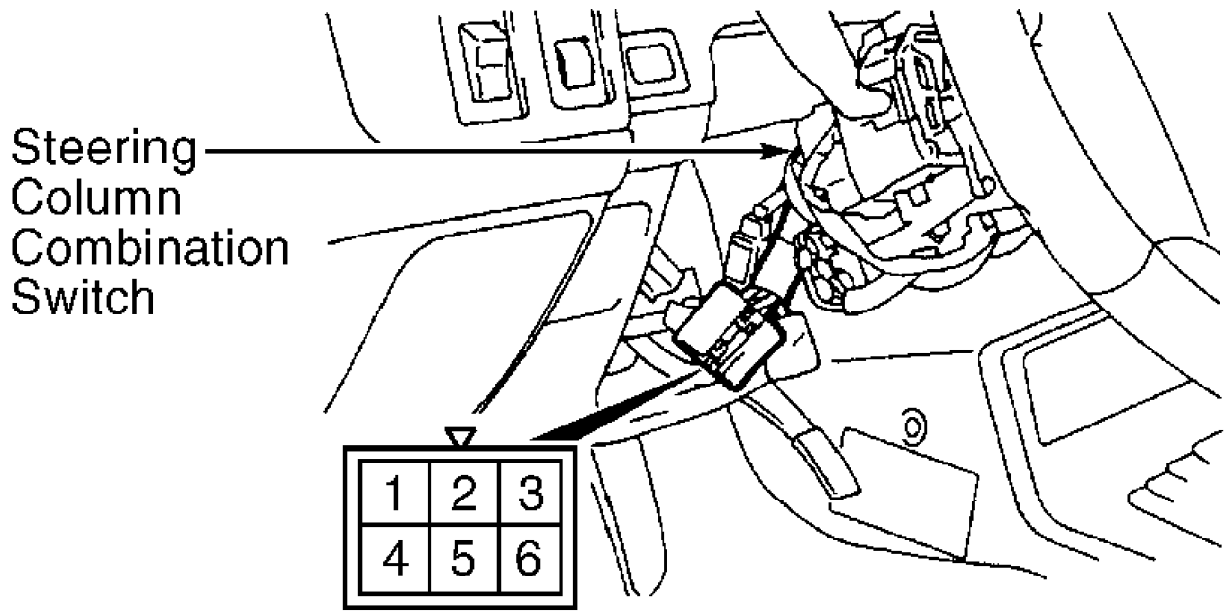


1. Upper Steering Column Cover
2. Steering Column Combination Switch & Clockspring Assembly
3. Lower Steering Column Cover
4. Steering Lock Cylinder
5. Key Hole Illumination Light

6. Key Reminder Switch
7. Lower Instrument Panel Cover
8. Fuse/Relay Block
9. ETACS-ECU
10. Ignition Switch

97J11865

Fig. 25: Exploded View Of Steering Column (Montero Sport)  
Courtesy of Mitsubishi Motor Sales of America



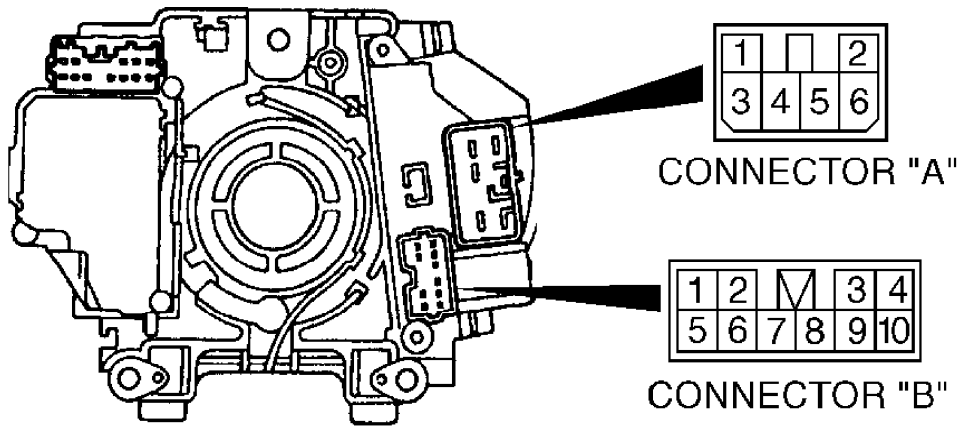
IGNITION KEY POSITION	TERMINAL NO.				
	1	2	4	5	6
LOCK					
ACC	○				○
ON	○	○	○		○
START	○	○		○	

97A11866

Fig. 26: Testing Ignition Switch (Montero Sport)  
 Courtesy of Mitsubishi Motor Sales of America

Lighting & Turn Signal Switch Tests

Disconnect steering column combination switch connector. Check continuity between specified terminals. See Figs. 25 and 27. If continuity is not as specified, replace steering column combination switch.



SWITCH POSITION		CONNECTOR A-TERMINAL NO.					CONNECTOR B-TERMINAL NO.					
		1	2	3	4	6	3	5	6	7	8	9
LIGHTING SWITCH	OFF											
	TAIL							○	—	○		
	HEAD	○						○		○		
DIMMER/PASSING SWITCH	LOWER			○	○							
	UPPER				○	○						
	PASSING	○	○		○	○						

**NOTE**

\* indicates continuity with the dimmer switch in the lower beam position.

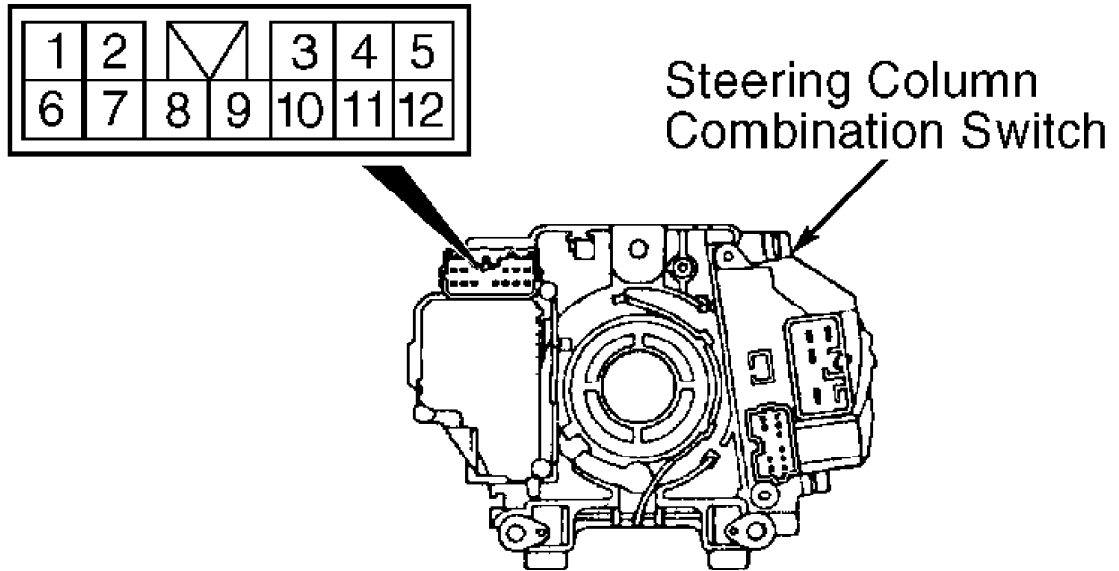
SWITCH POSITION		TERMINAL NO.					
		3	5	7	8	9	
TURN-SIGNAL LIGHT SWITCH	RH				○	—	○
	OFF						
	LH	○				○	

97B11867

Fig. 27: Testing Lighting & Turn Signal Switches (Montero Sport)  
 Courtesy of Mitsubishi Motor Sales of America

Front Wiper/Washer Switch Test  
 Disconnect steering column combination switch connector.

Check continuity between specified terminals. See Figs. 25 and 28. If continuity is not as specified, replace steering column combination switch.



SWITCH POSITION		TERMINAL NO.				
		6	7	8	9	10
WIPER SWITCH	OFF		○—○			
	INTER-MITTENT		○—○			
	1 (LOW)			○—○		
	2 (HIGH)				○—○	
WASHER SWITCH	ON	○—○				

97C11868

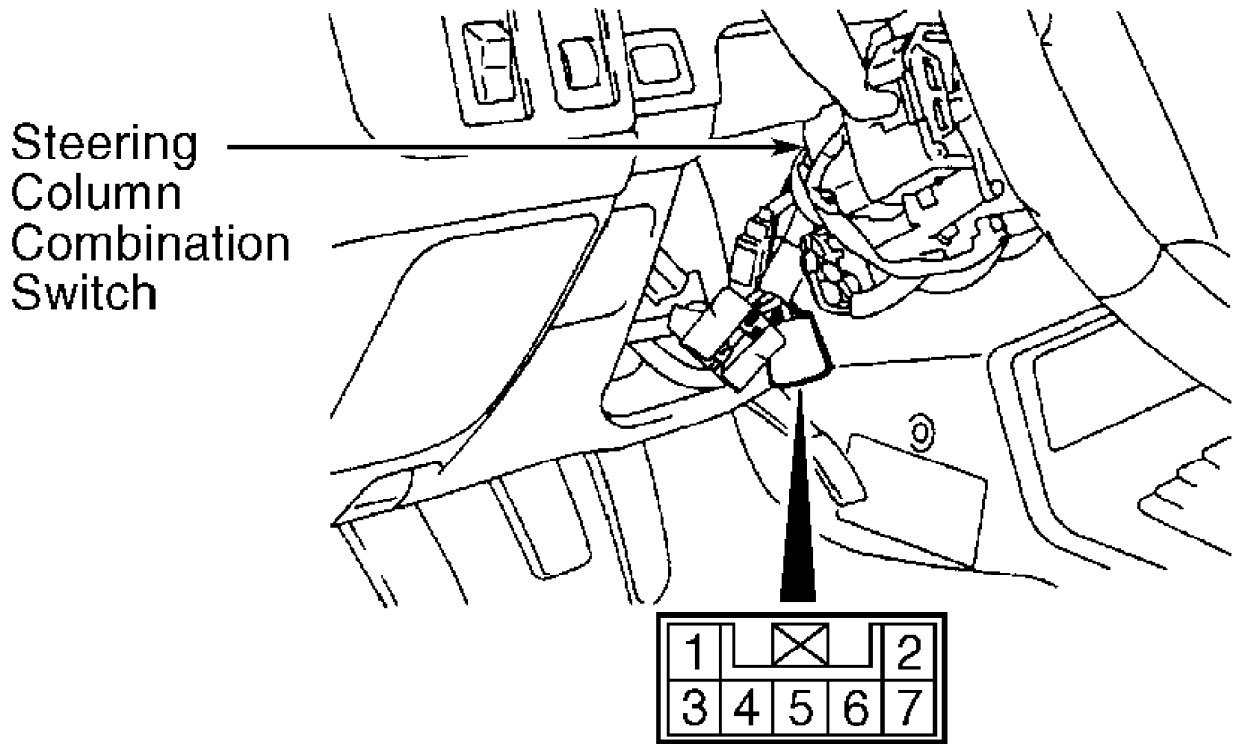
Fig. 28: Front Wiper/Washer Switch (Montero Sport)  
 Courtesy of Mitsubishi Motor Sales of America

**Key Reminder Switch Test**

Disconnect key reminder switch connectors. Check continuity between specified terminals. See Figs. 25 and 29. If continuity is not as specified, replace key reminder switch.

Rear Wiper/Washer Switch Test

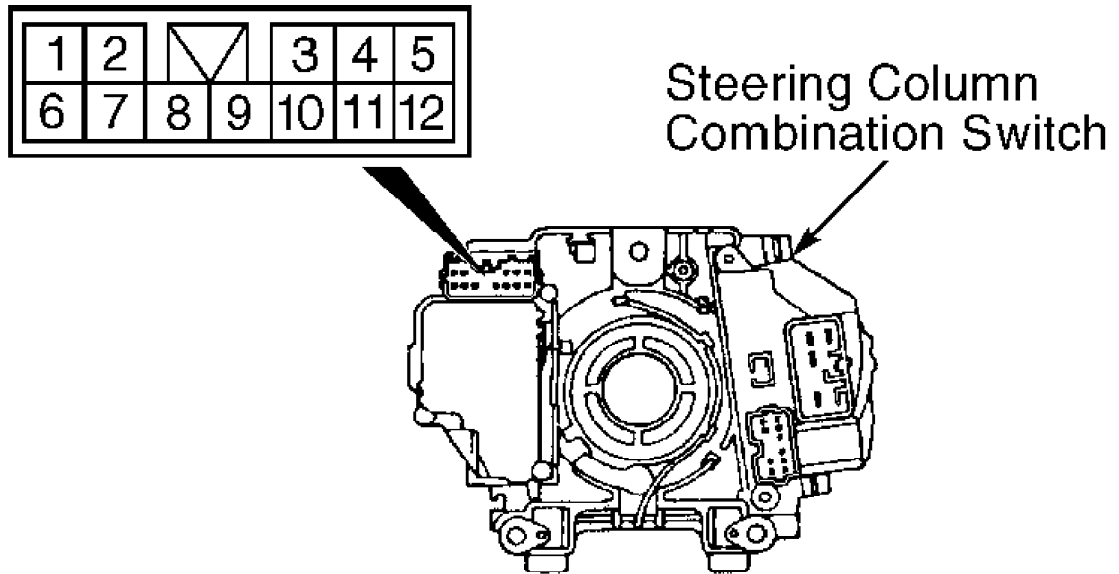
Disconnect steering column combination switch connector.  
 Check continuity between specified terminals. See Fig. 30. If continuity is not as specified, replace steering column combination switch.



IGNITION KEY POSITION	TERMINAL NO.				
	1		2	4	6
PULLED OUT	○	ILL ○	○	○	○
INSERTED	○	ILL ○	○		

97D11869

Fig. 29: Testing Key Reminder Switch (Montero Sport)  
 Courtesy of Mitsubishi Motor Sales of America



SWITCH POSITION		TERMINAL NO.				
		2	3	4	10	
WIPER SWITCH	INTERMITTENT		○	—	○	
	ON			○	—	○
WASHER SWITCH	ON	○	—	○	—	○

97G11870

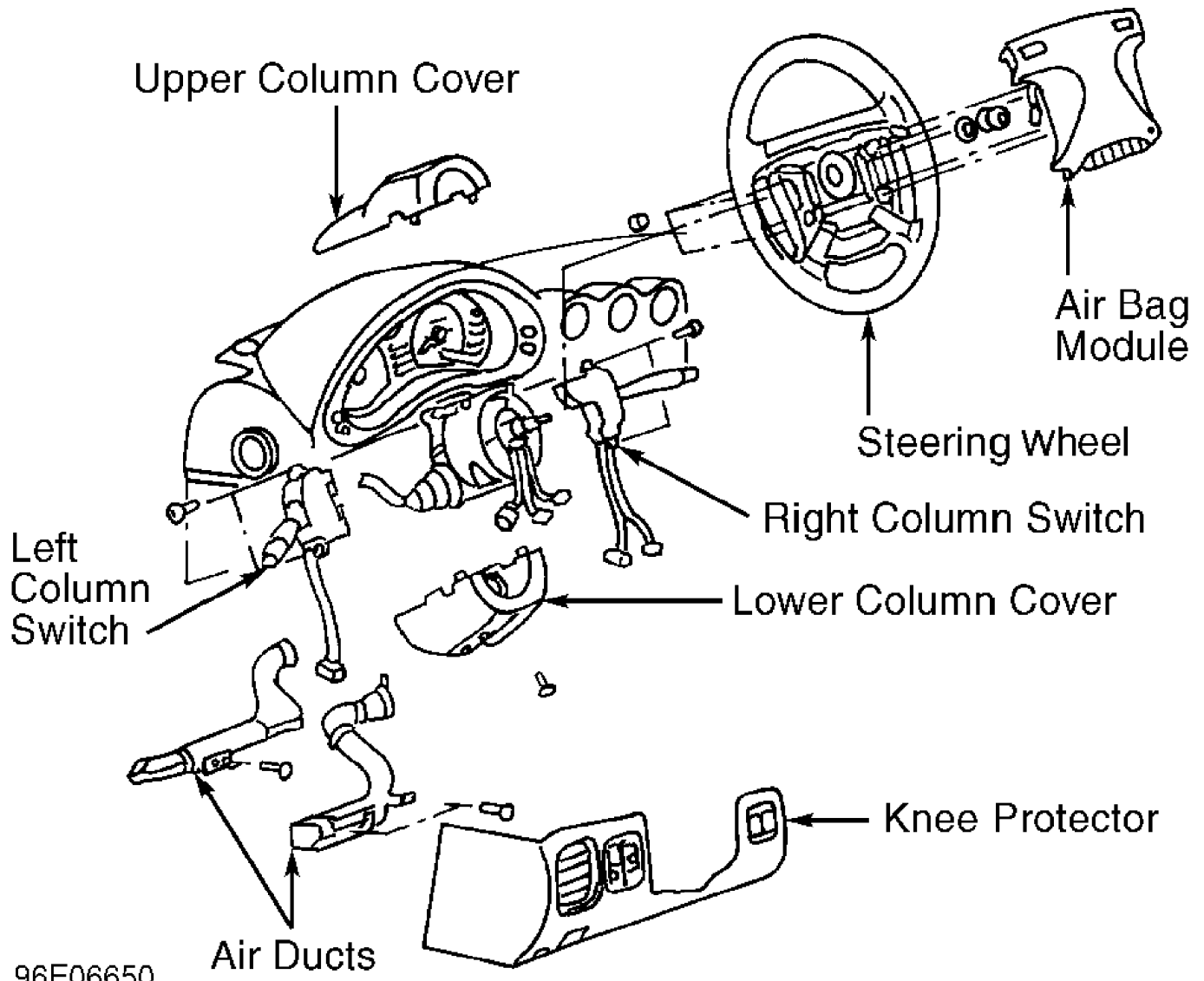
Fig. 30: Testing Rear Wiper/Washer Switch (Montero Sport)  
 Courtesy of Mitsubishi Motor Sales of America

3000GT

Lighting, Turn Signal & Dimmer/Passing Switch Tests

Disconnect steering column combination switch connector.

Check continuity between specified terminals. See Figs. 31 and 32. If continuity is not as specified, replace steering column combination switch.

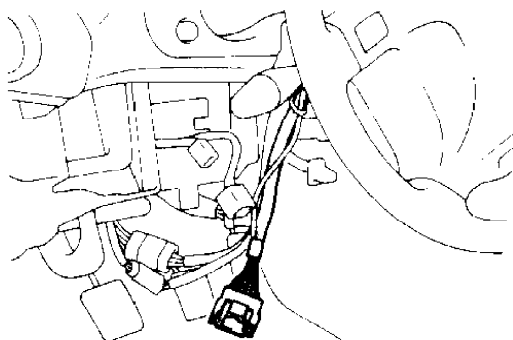


96E06650

Fig. 31: Exploded View Of Steering Column (3000GT)  
 Courtesy of Mitsubishi Motor Sales of America



### COLUMN SWITCH CONNECTOR



1	2	3	4	5	6	7	8
9	10	11	12	13	14	15	16

### LIGHTING SWITCH

Terminal	3	5	6	7	10	14
Switch position						
OFF		○ — ○				
☰		○ — ○			○ — ○	
☷	○ —	○ —	○ —	○ —	○ —	○ —

### TURN SIGNAL SWITCH

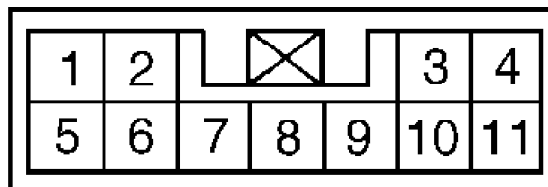
Terminal	1	12	13
Switch position			
Left	○ —		○ —
Neutral			
Right	○ —	○ —	

### DIMMER/PASSING SWITCH

Terminal	2	8	9	16
Switch position				
Dimmer switch	LOW		○ — ○	
	HIGH		○ — ○	
Passing switch	○ —	○ —	○ —	

96106652  
 Fig. 32: Testing Lighting, Turn Signal & Dimmer/Passing Switches  
 (3000GT)  
 Courtesy of Mitsubishi Motor Sales of America

Disconnect ignition switch and key reminder switch connectors. Check continuity between specified terminals. See Figs. 31 and 34. If continuity is not as specified, replace ignition switch or key reminder switch.



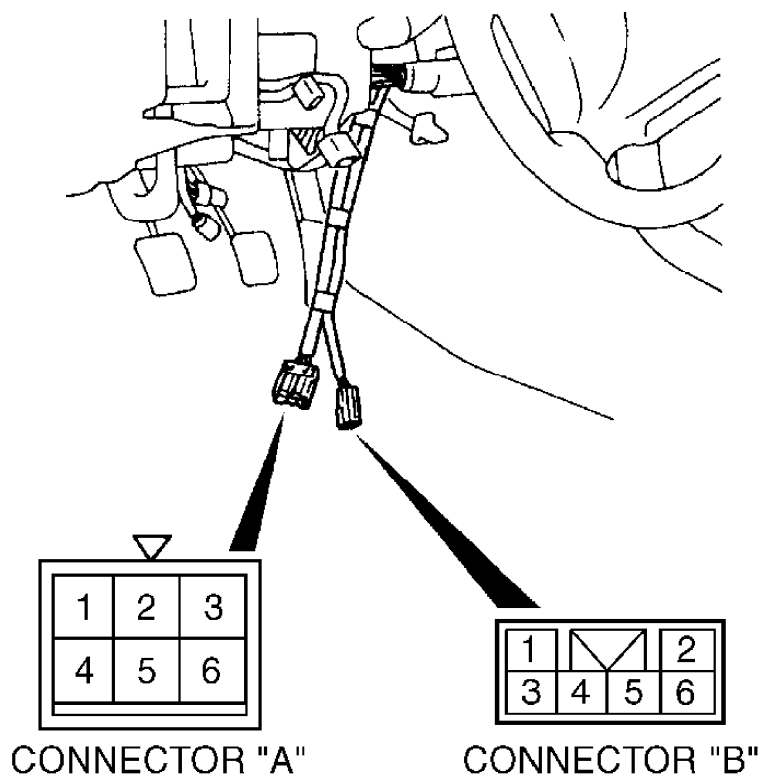
Terminal No.		3	4	5	6	7	8	9	10
Wiper switch	OFF				○				○
	INT	○			○			○	○
	LO			○	○				
	HI			○		○			
Variable intermittent wiper control switch			○					○	
Washer switch				○			○		

**NOTE**

○—○ denotes that there is continuity between the terminals.

**96H06656**

Fig. 33: Testing Front Wiper/Washer Switch (3000GT)  
 Courtesy of Mitsubishi Motor Sales of America



Position	Key	Connector A						Connector B				Connector B	
		Ignition switch terminal No.						Key reminder switch terminal No.				Ignition key illumination light terminal No.	
		1	2	3	4	5	6	1	2	3	6	4	5
LOCK	Removed									○	○		
	Installed			○	—	○							
ON			○	○	○	○	○	○					
START		○	—		○	○	○						

97A11858

Fig. 34: Testing Ignition Switch & Key Reminder Switch (3000GT)  
 Courtesy of Mitsubishi Motor Sales of America

Wiper/Washer Switch Test (Front)  
 Disconnect steering column combination switch connector.

Check continuity between specified terminals. See Figs. 31 and 33. If continuity is not as specified, replace steering column combination switch.

## REMOVAL & INSTALLATION

### \* PLEASE READ THIS FIRST \*

**WARNING:** Deactivate air bag system before performing any service operation. See AIR BAG RESTRAINT SYSTEMS article. DO NOT apply electrical power to any component on steering column without first deactivating air bag system. Air bag may deploy.

## IGNITION SWITCH

### Removal & Installation (Diamante)

Remove instrument panel lower cover. Remove upper and lower steering column covers. See Fig. 1. Remove ignition switch. To install, reverse removal procedure.

### Removal & Installation (Eclipse)

1) Remove knee protector mount screw plugs. Remove knee protector. Remove hood lock release handle. Remove upper and lower steering column covers. See Fig. 6. Remove ignition key illumination light.

2) Remove steering lock cylinder. Remove A/C-heater system lap cooler and shower ducts. On A/T models, remove key interlock cable and slide lever. On all models, remove ignition switch. To install, reverse removal procedure.

### Removal & Installation (Galant)

Remove knee protector. Remove upper and lower column covers. See Fig. 11. Remove ignition switch. To install, reverse removal procedure.

### Removal & Installation (Mirage)

Remove knee protector. Remove steering column cover. See Fig. 15. Remove clip and cover. On A/T models, remove key interlock cable, spring and slide lever. On all models, remove ignition switch. To install, reverse removal procedure.

### Removal & Installation (Montero & Montero Sport)

Remove lower instrument panel cover. Remove upper and lower column covers. See Fig. 19 or 25. Remove ignition switch. To install, reverse removal procedure.

### Removal & Installation (3000GT)

Remove knee protector. Remove upper and lower steering column covers. See Fig. 31. Remove A/C-heater system lap cooler duct and foot duct. Remove key reminder switch. Remove ignition switch. To install, reverse removal procedure.

## STEERING COLUMN SWITCH

**CAUTION:** DO NOT hammer on steering shaft. Collapsible steering column mechanism may be damaged.

### Removal & Installation (Diamante)

Remove air bag module. See AIR BAG RESTRAINT SYSTEMS article. Remove steering wheel. Remove instrument panel lower cover. Remove upper and lower steering column covers. See Fig. 1. Remove steering

column switch. To install, reverse removal procedure.

#### Removal & Installation (Eclipse)

Remove air bag module. See AIR BAG RESTRAINT SYSTEMS article.  
Remove horn pad and steering wheel. Remove hood lock release handle.  
Remove column pad and upper and lower column covers. See Fig. 6.  
Remove A/C-heater system lap cooler duct and foot shower duct. Remove steering column switch. To install, reverse removal procedure.

#### Removal & Installation (Galant)

Remove air bag module. See AIR BAG RESTRAINT SYSTEMS article.  
Remove steering wheel. Remove column pad. Remove foot duct. Remove upper and lower steering column covers. See Fig. 11. Remove steering column switch. To install, reverse removal procedure.

#### Removal & Installation (Mirage)

Remove air bag module. See AIR BAG RESTRAINT SYSTEMS article.  
Remove steering wheel. Remove hood release handle. Remove knee protector. Remove upper and lower steering column covers. See Fig. 15.  
Remove steering column switch. To install, reverse removal procedure.

#### Removal & Installation (Montero)

Remove air bag module. See AIR BAG RESTRAINT SYSTEMS article.  
Remove steering wheel. Remove foot duct. Remove lower instrument panel cover. Remove upper and lower steering column covers. See Fig. 19.  
Remove steering column switch. To install, reverse removal procedure.

#### Removal & Installation (Montero Sport)

Remove air bag module. See AIR BAG RESTRAINT SYSTEMS article.  
Remove steering wheel. Remove instrument panel lower cover. Remove upper and lower steering column covers. See Fig. 25. Remove steering column switch. To install, reverse removal procedure.

#### Removal & Installation (3000GT)

Remove air bag module. See AIR BAG RESTRAINT SYSTEMS article.  
Remove steering wheel. Remove knee protector. Remove upper and lower steering column covers. Remove A/C-heater system lap cooler duct and foot duct. Remove left or right steering column switch. See Fig. 31.  
To install, reverse removal procedure.

## TORQUE SPECIFICATIONS

### TORQUE SPECIFICATIONS TABLE

Application	Ft. Lbs. (N.m)
Steering Wheel Nut	
Diamante, Montero, Montero Sport & 3000GT .....	29 (39)
Eclipse, Galant & Mirage .....	30 (41)
	INCH Lbs. (N.m)
Air Bag Module Bolts/Nuts	
Diamante, Eclipse & Mirage .....	53 (6.0)
Galant & Montero .....	80 (9.0)
Montero Sport .....	78 (8.8)
3000GT .....	39 (4.4)

## WIRING DIAGRAMS

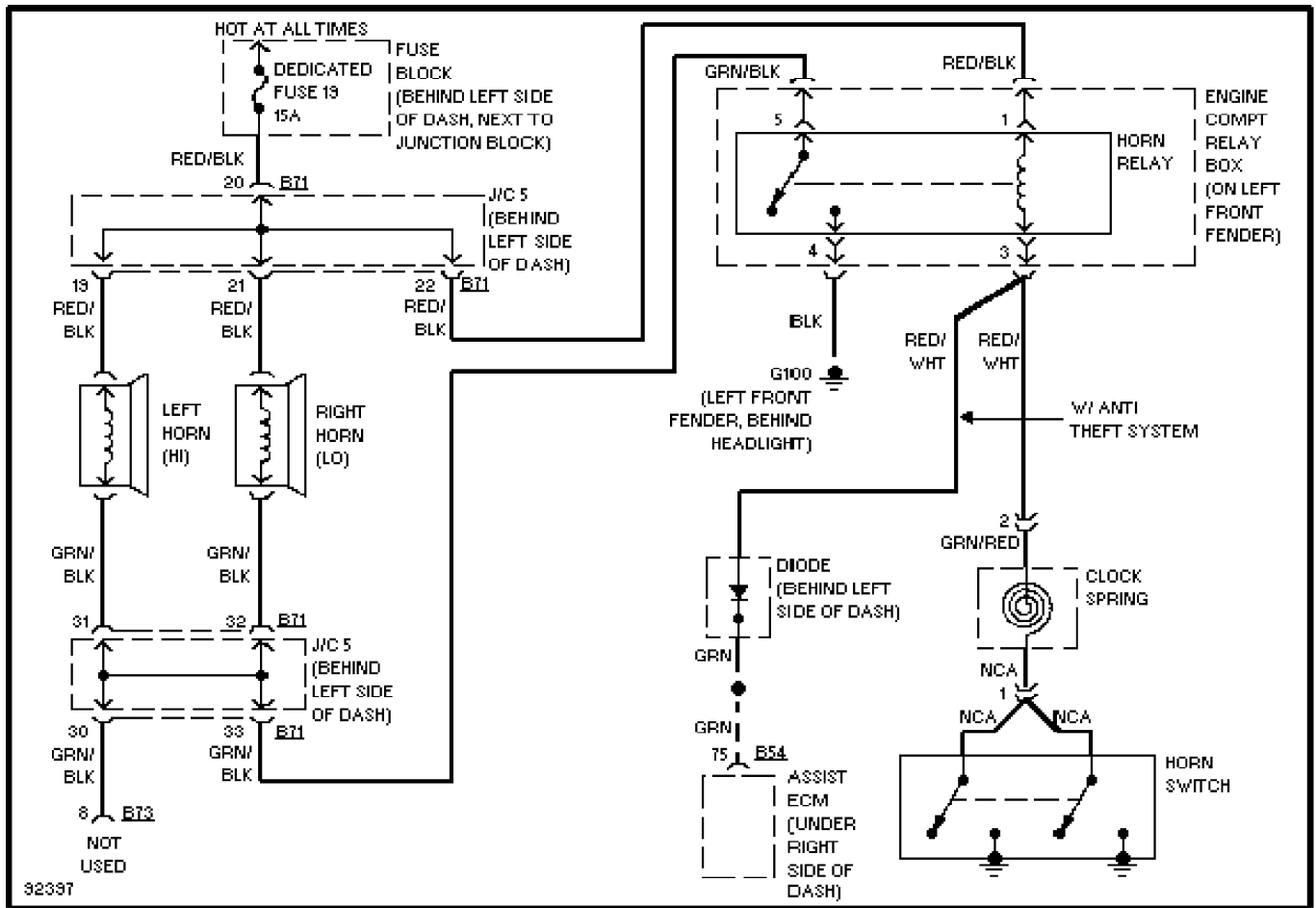


Fig. 35: Horn Circuit Wiring Diagram (Diamante)

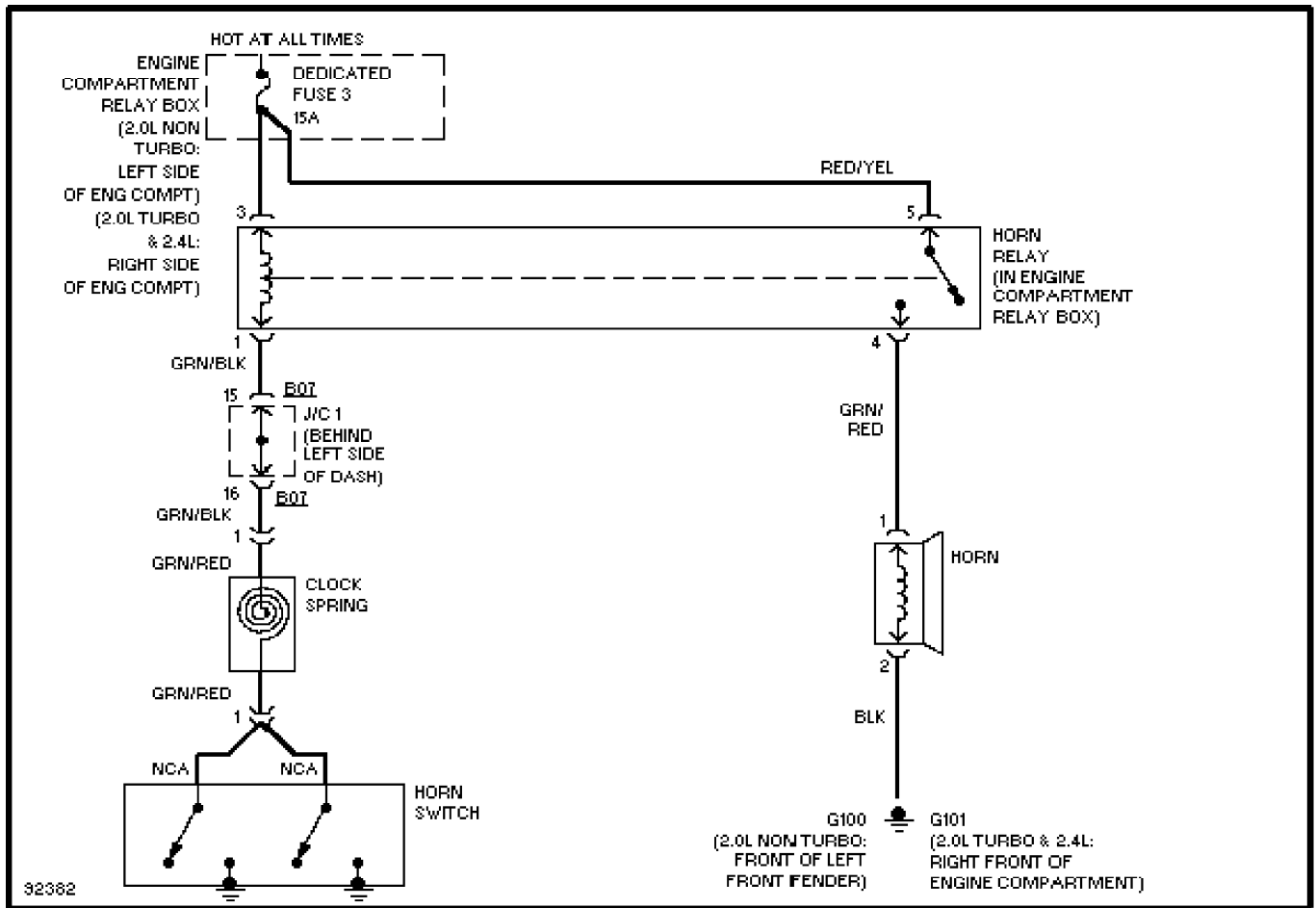


Fig. 36: Horn Circuit Wiring Diagram (Eclipse)

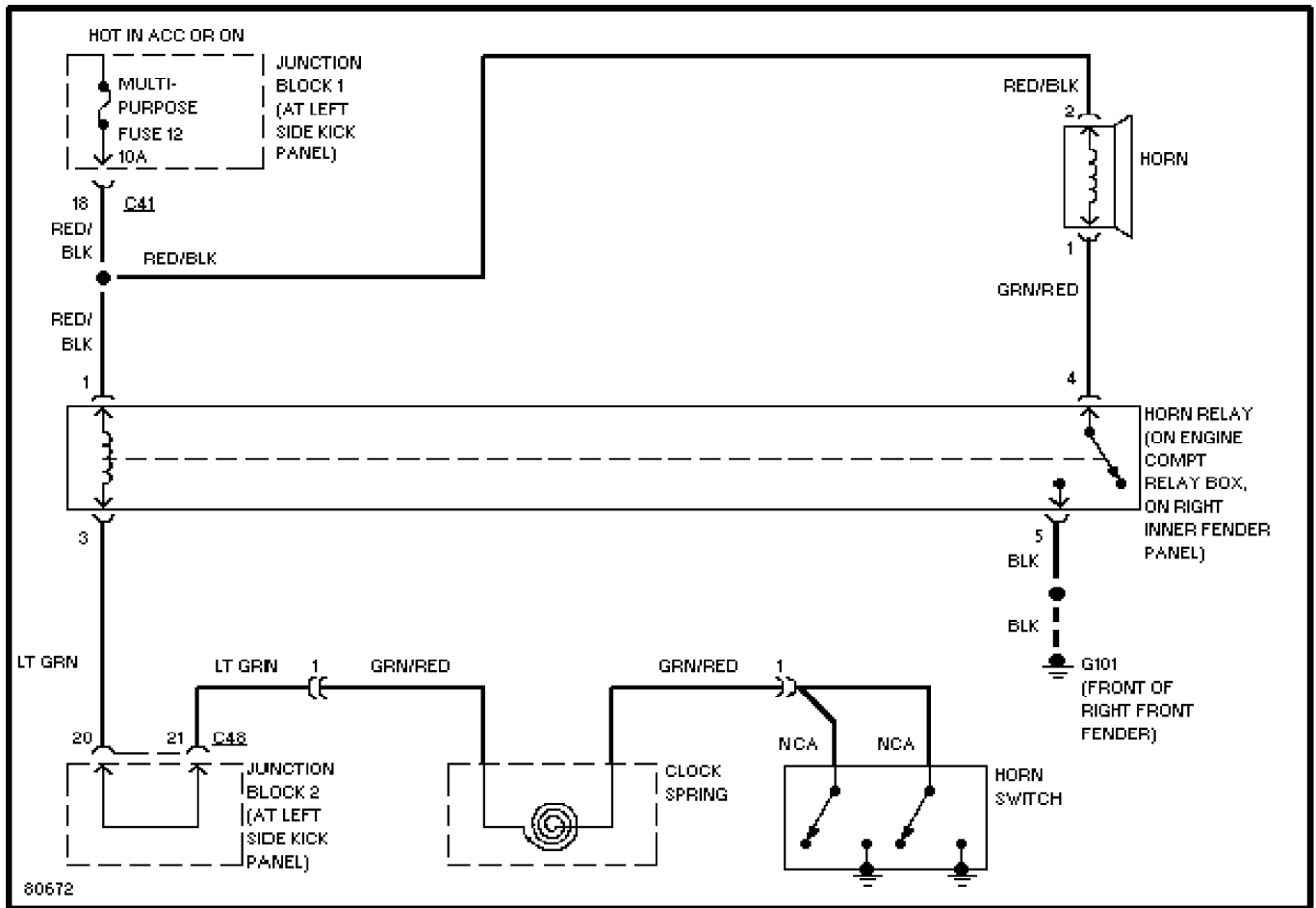


Fig. 37: Horn Circuit Wiring Diagram (Galant)



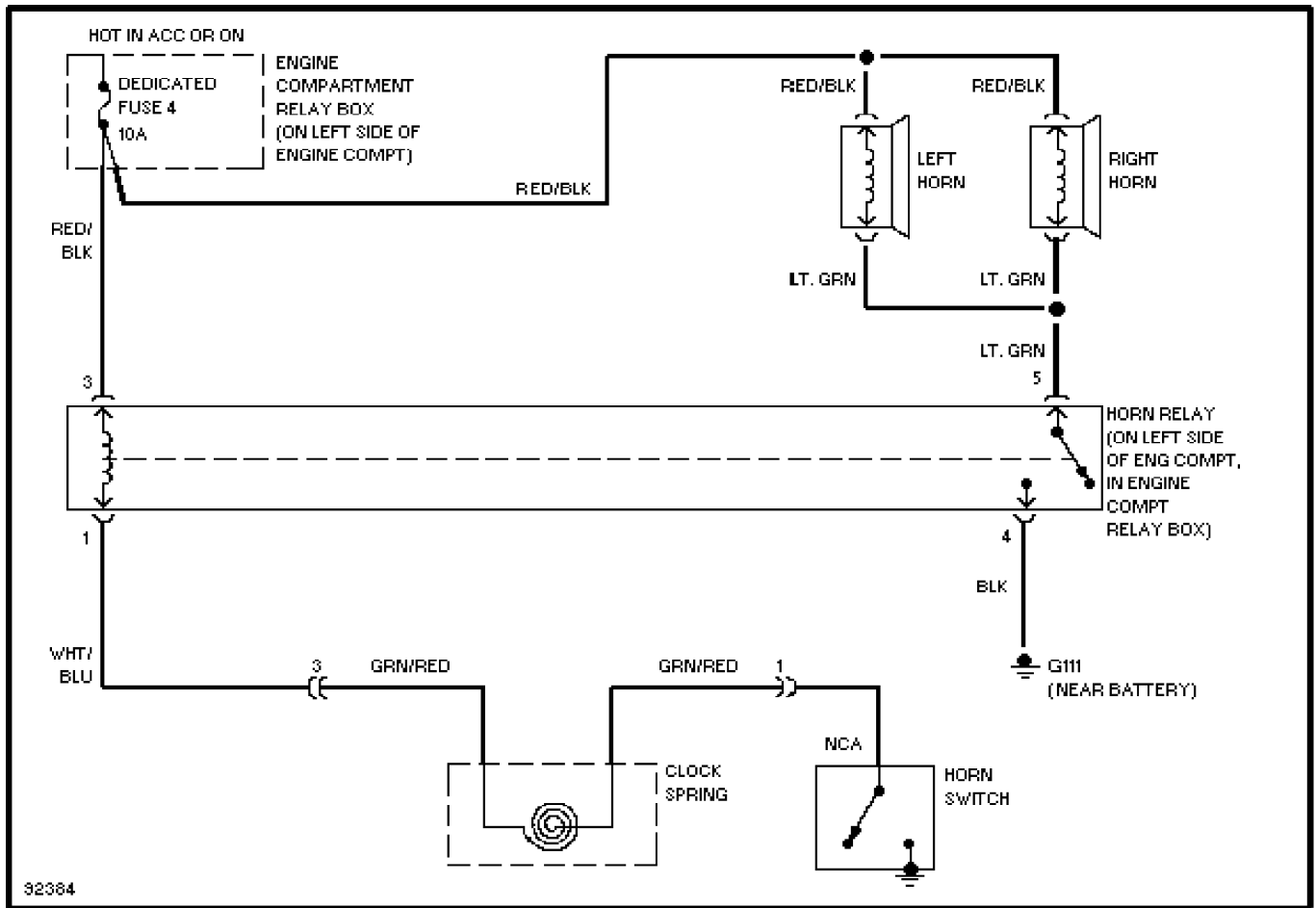


Fig. 38: Horn Circuit Wiring Diagram (Mirage)

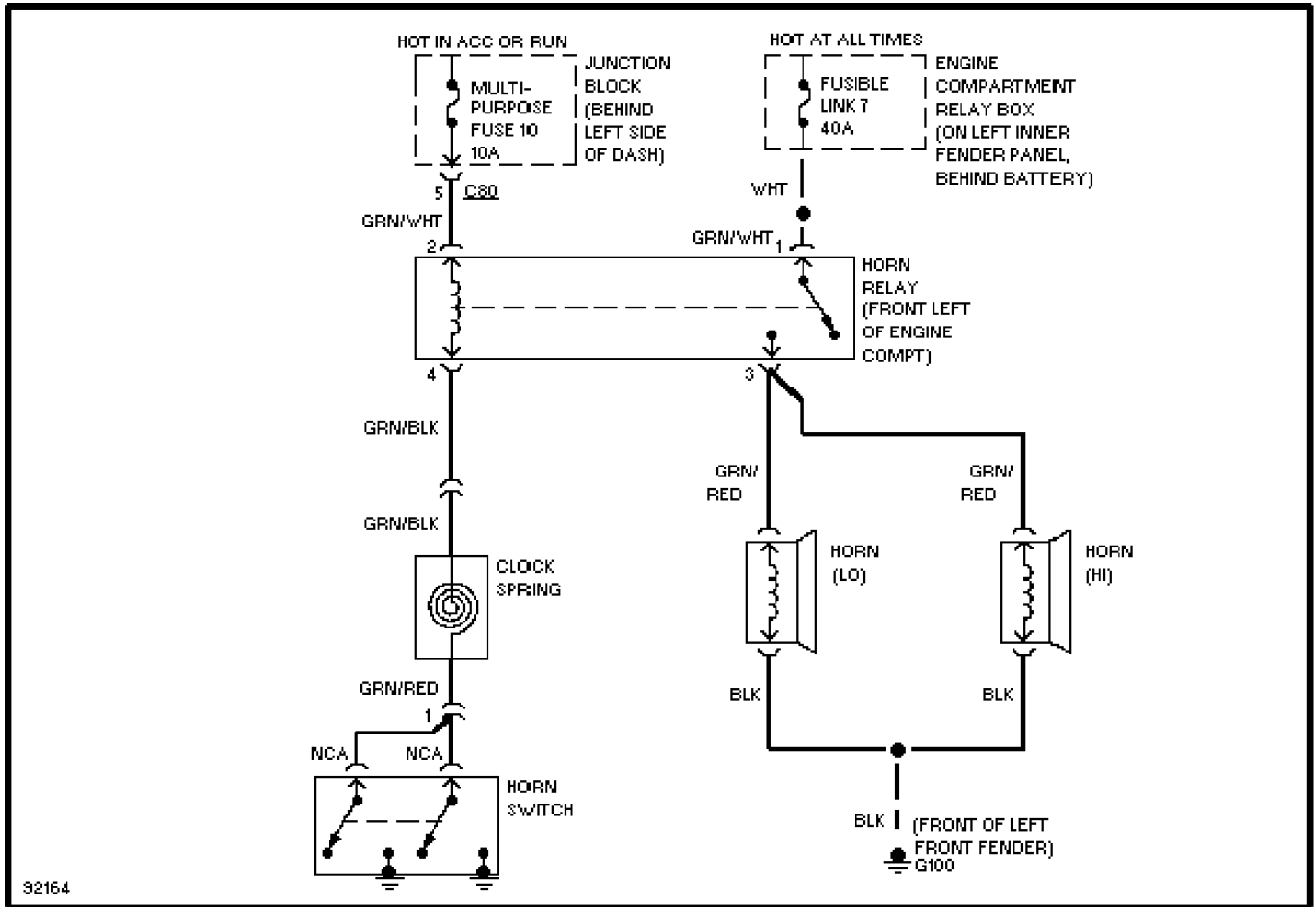


Fig. 39: Horn Circuit Wiring Diagram (Montero)

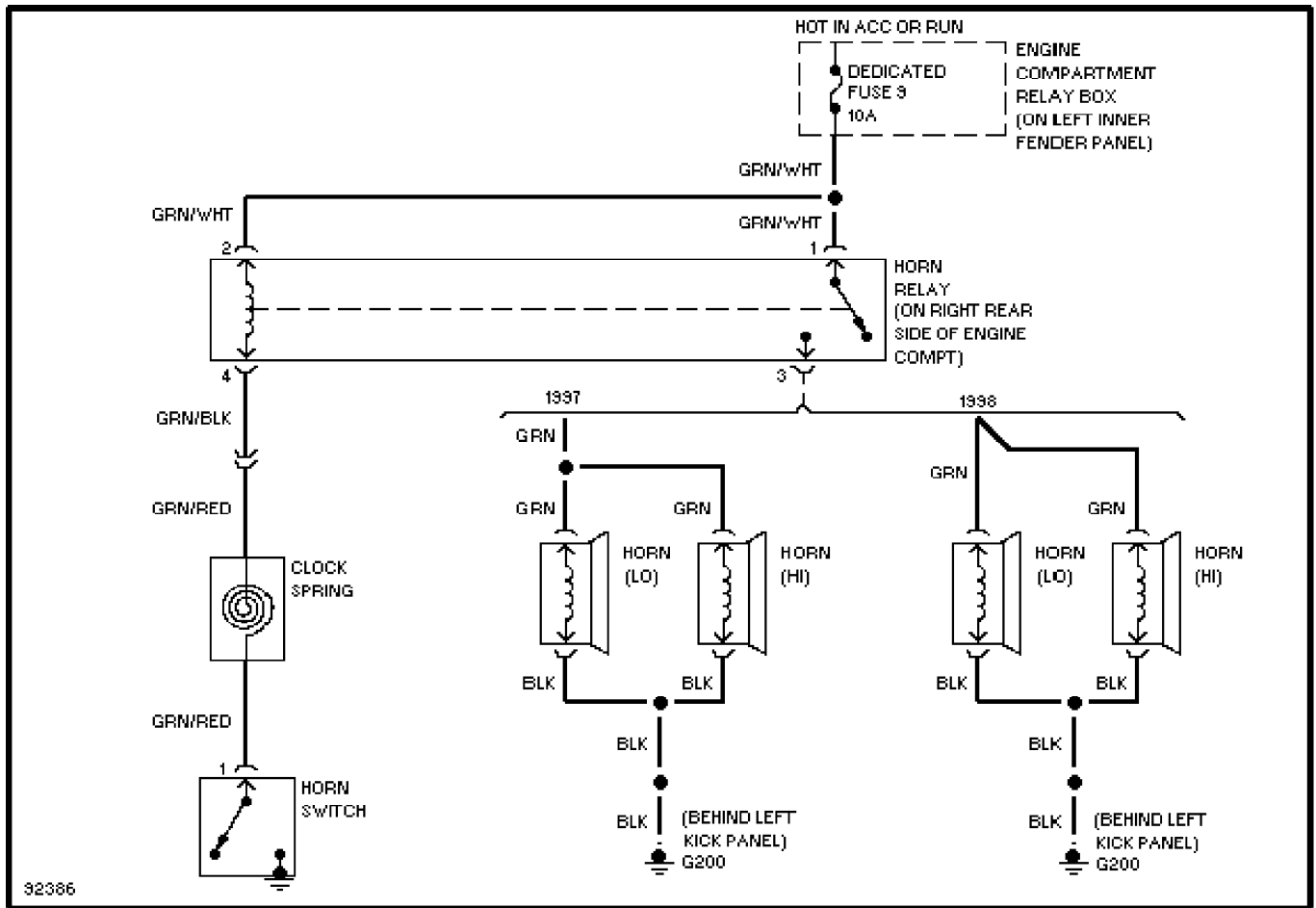


Fig. 40: Horn Circuit Wiring Diagram (Montero Sport)

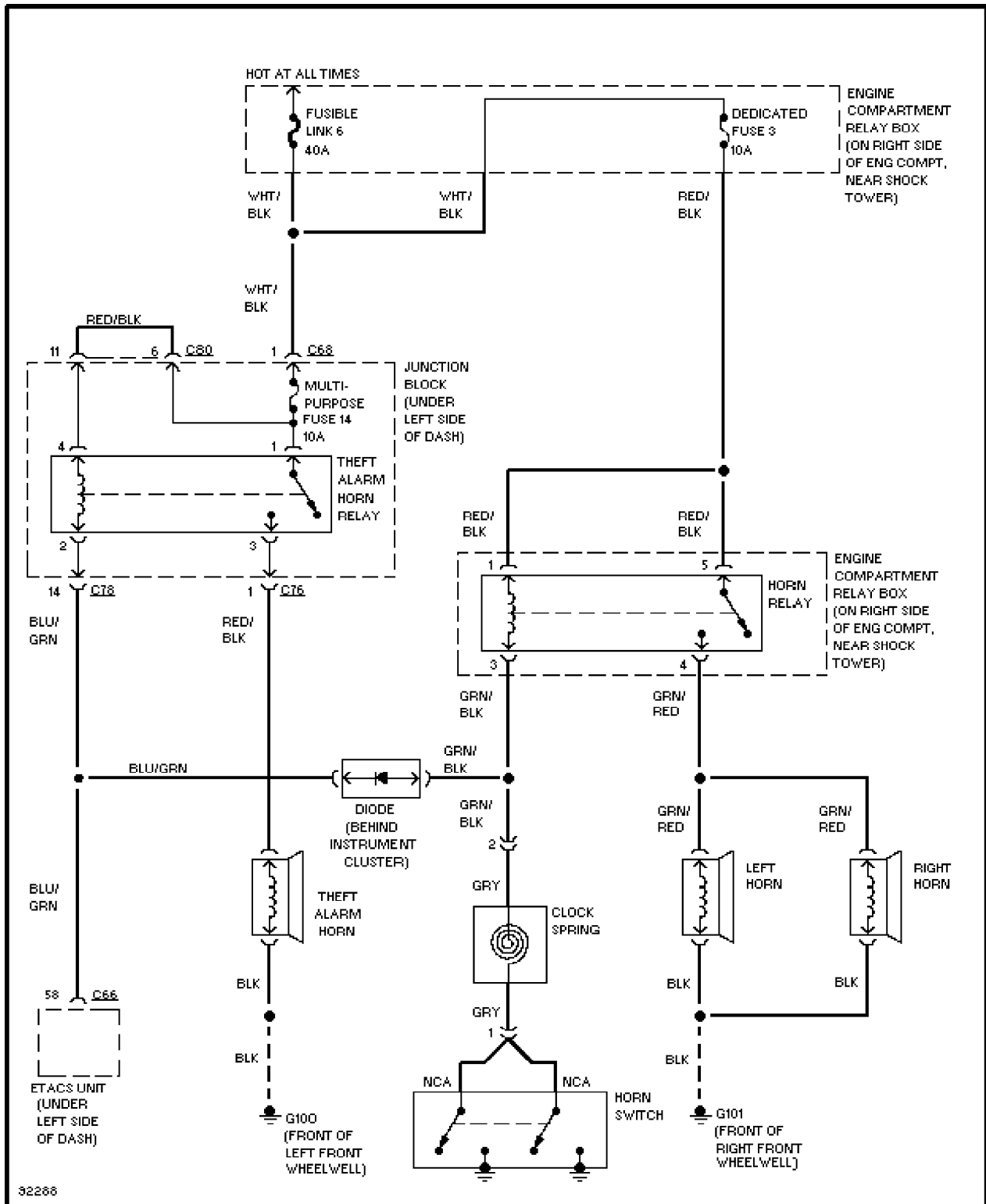


Fig. 41: Horn Circuit Wiring Diagram (3000GT - W/Anti-Theft System)

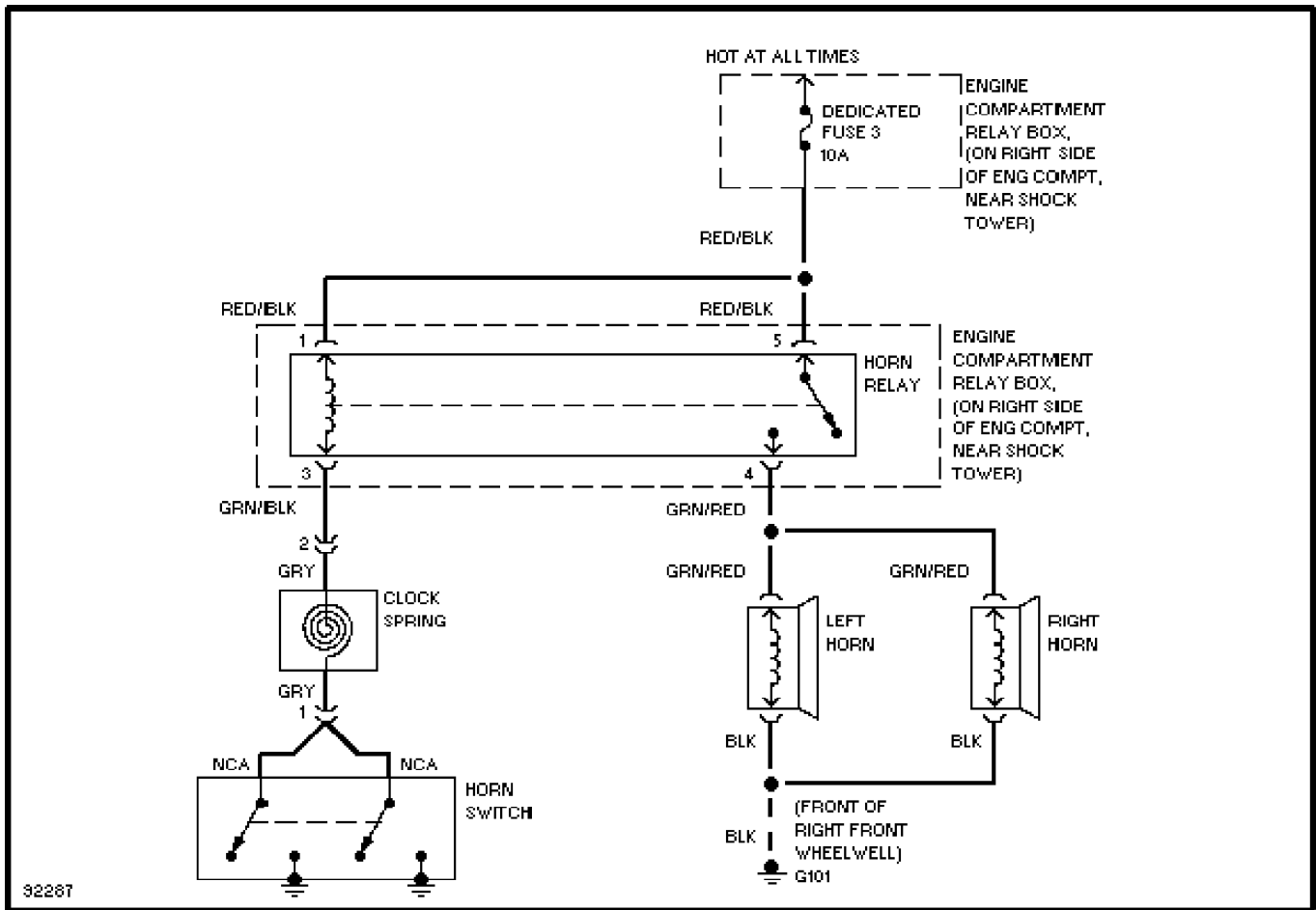


Fig. 42: Horn Circuit Wiring Diagram (3000GT - W/out Anti-Theft System)