

GROUP 52A

INTERIOR

CONTENTS

GENERAL DESCRIPTION	52A-2	INSIDE REAR VIEW MIRROR	52A-19
SEAT BELT DIAGNOSIS	52A-2	FRONT SEAT ASSEMBLY*	52A-20
SPECIAL TOOLS	52A-2	REMOVAL AND INSTALLATION	52A-20
INSTRUMENT PANEL ASSEMBLY*	52A-3	INSPECTION	52A-22
REMOVAL AND INSTALLATION	52A-3	DISASSEMBLY AND ASSEMBLY	52A-25
DISASSEMBLY AND ASSEMBLY	52A-8	REAR SEAT ASSEMBLY	52A-29
FLOOR CONSOLE ASSEMBLY	52A-9	REMOVAL AND INSTALLATION	52A-29
REMOVAL AND INSTALLATION	52A-9	DISASSEMBLY AND REASSEMBLY	52A-31
TRIMS	52A-10	FRONT SEAT BELT*	52A-32
REMOVAL AND INSTALLATION	52A-10	REMOVAL AND INSTALLATION	52A-32
DOOR TRIM	52A-13	INSPECTION	52A-33
REMOVAL AND INSTALLATION	52A-13	REAR SEAT BELT	52A-33
DISASSEMBLY AND ASSEMBLY	52A-16	REMOVAL AND INSTALLATION	52A-33
HEADLINING	52A-18	SPECIFICATIONS	52A-34
REMOVAL AND INSTALLATION	52A-18	FASTENER TIGHTENING	
		SPECIFICATIONS	52A-34

WARNING

Battery posts, terminals and related accessories contain lead and lead compounds. WASH HANDS AFTER HANDLING.

WARNINGS REGARDING SERVICING OF SUPPLEMENTAL RESTRAINT SYSTEM (SRS) EQUIPPED VEHICLES

WARNING

- *Improper service or maintenance of any component of the SRS, or any SRS-related component, can lead to personal injury or death to service personnel (from inadvertent firing of the air bag) or to the driver and passenger (from rendering the SRS inoperative).*
- *Service or maintenance of any SRS component or SRS-related component must be performed only at an authorized MITSUBISHI dealer.*
- *MITSUBISHI dealer personnel must thoroughly review this manual, and especially its GROUP 52B - Supplemental Restraint System (SRS) before beginning any service or maintenance of any component of the SRS or any SRS-related component.*

NOTE

The SRS includes the following components: SRS air bag control unit, SRS warning light, front impact sensors, air bag module, clock spring, and interconnecting wiring. Other SRS-related components (that may have to be removed/installed in connection with SRS service or maintenance) are indicated in the table of contents by an asterisk (*).

GENERAL DESCRIPTION

M1521000100184

OPERATION**Seat belt warning system**

If the driver turn the ignition switch to the "ON" position without fastening the seat belt, the seat belt warning light illuminates.

SEAT BELT DIAGNOSIS

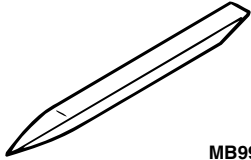
M1523000700182

The seat belt warning system is controlled by the Simplified Wiring System (SWS). For troubleshooting, refer to GROUP 54B, SWS diagnosis

[P.54B-115.](#)

SPECIAL TOOLS

M1521000600327

TOOL	TOOL NUMBER AND NAME	SUPERSESION	APPLICATION
 <p data-bbox="347 1129 440 1150">MB990784</p>	<p data-bbox="594 970 837 1031">MB990784 Ornament remover</p>	<p data-bbox="909 970 1122 1031">General service tool</p>	<p data-bbox="1179 970 1487 1031">Removal of switch, trim, etc.</p>

INSTRUMENT PANEL ASSEMBLY

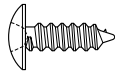

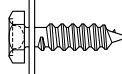
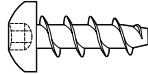

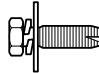
REMOVAL AND INSTALLATION

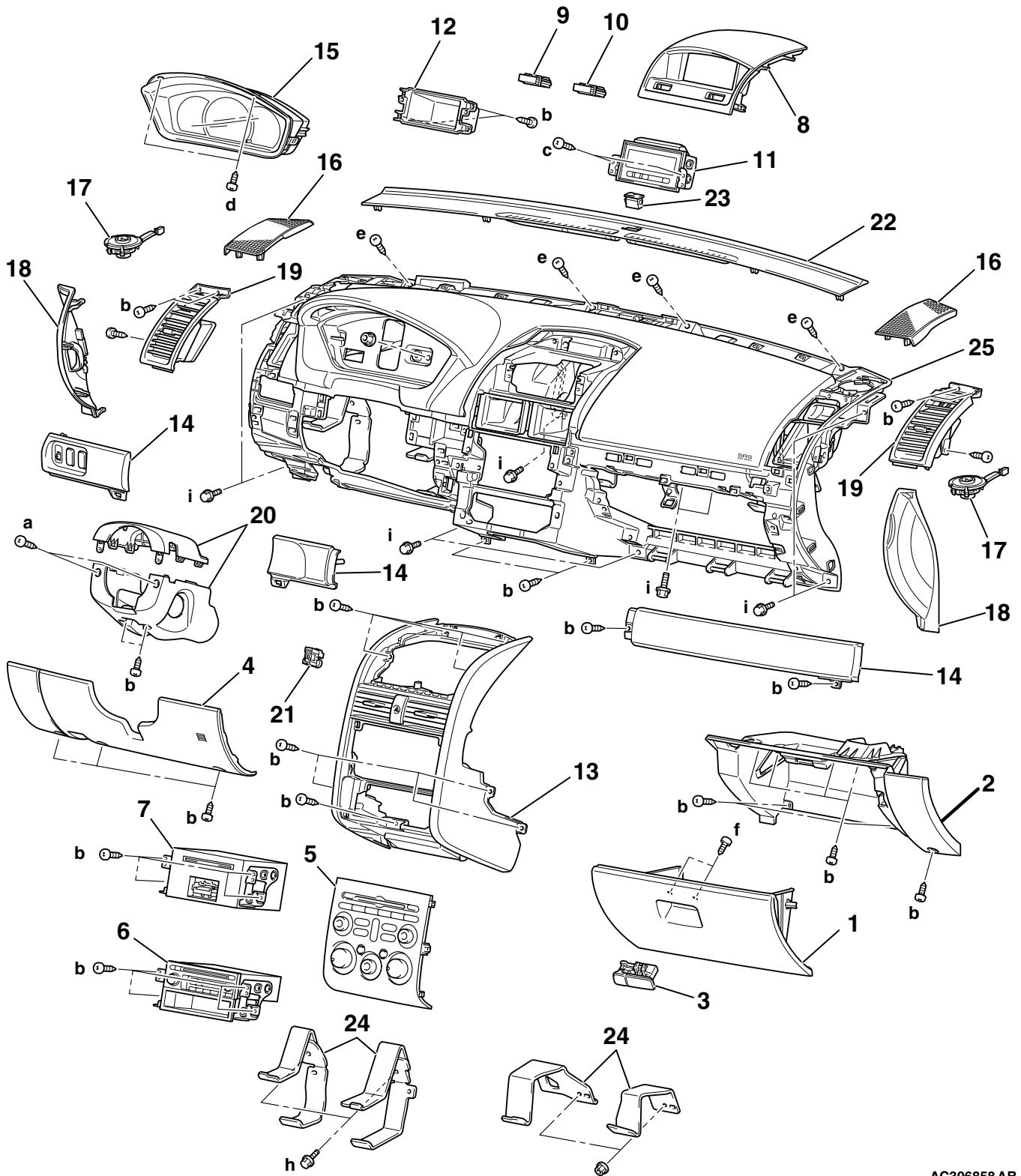
M1521001700684

⚠ CAUTION

- Refer to GROUP 52B, SRS Service Precautions **P.52B-26** and Air bag Module and Clock Spring **P.52B-369** before removing the passenger side air bag module.
- Do not subject the SRS-ECU to any shocks when removing or installing the instrument panel.

The following bolts and screws are used for installing the instrument panel. Bolts and screws are indicated as marks shown in the illustration in the sections of "Removal and Installation" and "Disassembly and Assembly."

NAME	SYMBOL	SIZE (D × L) mm	COLOR	SHAPE
TAPPING SCREW	a	5 × 12	BLACK	 AC104450
	b	5 × 16	-	
	c	5 × 20	-	
	d	5 × 20	BLACK	 AC104448
	e	6 × 16	GREEN	 AC104426
	f	8 × 15	-	 AC307531
WASHER ASSEMBLY BOLT	g	6 × 16	-	 AC104416
	h	6 × 25	-	
	i	6 × 16	-	 AC104417



AC306858 AB

REMOVAL STEPS

1. GLOVEBOX ASSEMBLY
2. INSTRUMENT PANEL PARCEL BOX
3. GLOVEBOX LOCK

REMOVAL STEPS (Continued)

- HOOD LOCK RELEASE HANDLE (REFER TO GROUP 42, HOOD P.42-8.)
- 4. INSTRUMENT LOWER PANEL
- 5. INSTRUMENT CENTER PANEL ASSEMBLY

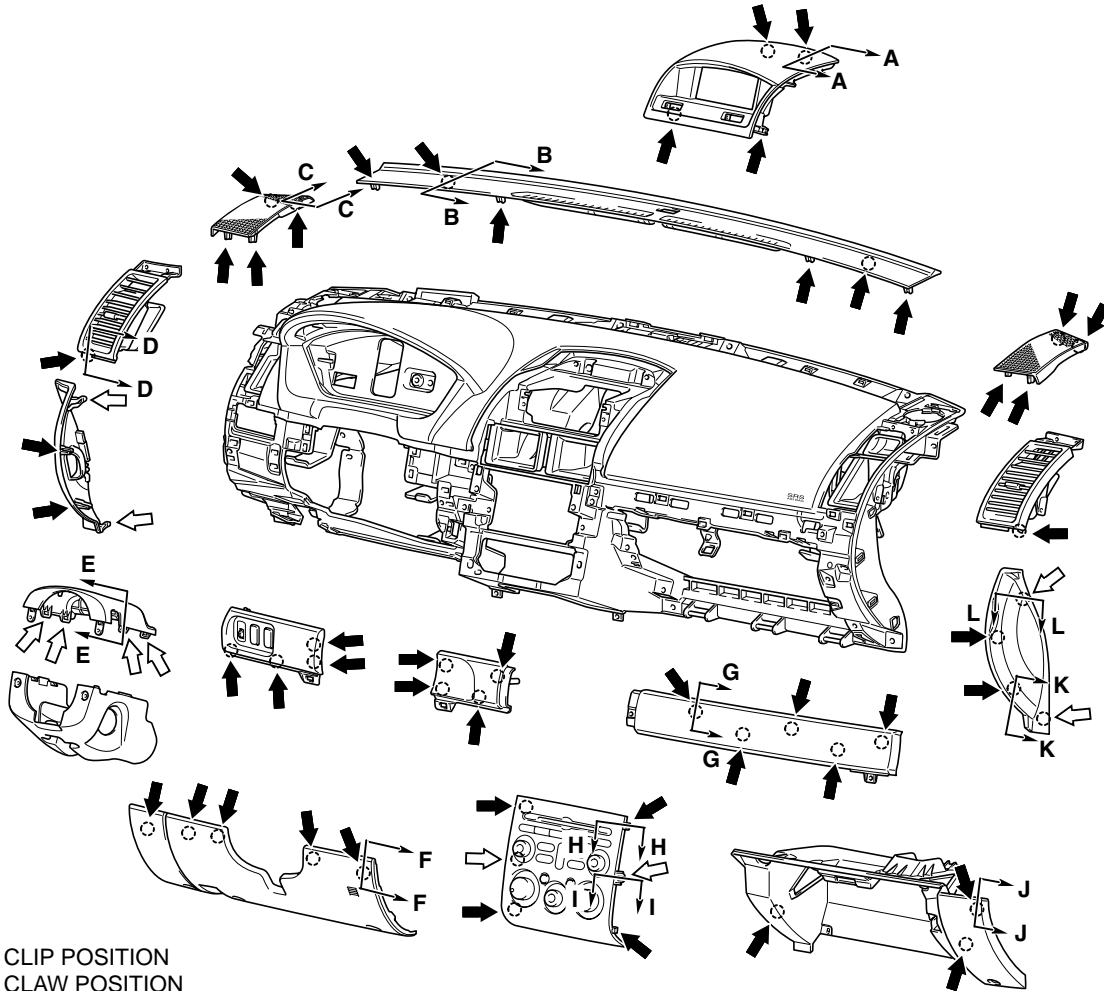
REMOVAL STEPS (Continued)

6. RADIO AND CD PLAYER, ACCESSORY BOX ASSEMBLY <<A>>
7. RADIO, CD PLAYER AND CD CHANGER ASSEMBLY <<A>>
8. CONSOLE METER HOOD
9. PASSENGER'S AIR BAG OFF INDICATOR LIGHT
10. PASSENGER'S SEAT BELT WARNING LIGHT
11. MULTI-CENTER DISPLAY ASSEMBLY
12. INSTRUMENT PANEL CLOCK HOLE BOX <DE>
13. CENTER CONSOLE ASSEMBLY
14. INSTRUMENT PANEL GARNISH
15. COMBINATION METER ASSEMBLY
- FRONT PILLAR TRIM (REFER TO P.52A-10.)
16. FRONT SPEAKER GARNISH
17. TWEETER
18. INSTRUMENT PANEL SIDE COVER <<A>>
19. INSTRUMENT PANEL SIDE AIR OUTLET
- AIR BAG MODULE ASSEMBLY (DRIVER'S SIDE) (REFER TO GROUP 52B, AIR BAG MODULE AND CLOCK SPRING P.52B-369.)
- STEERING WHEEL ASSEMBLY (REFER TO GROUP 37, STEERING WHEEL P.37-26.)
20. STEERING COLUMN COVER

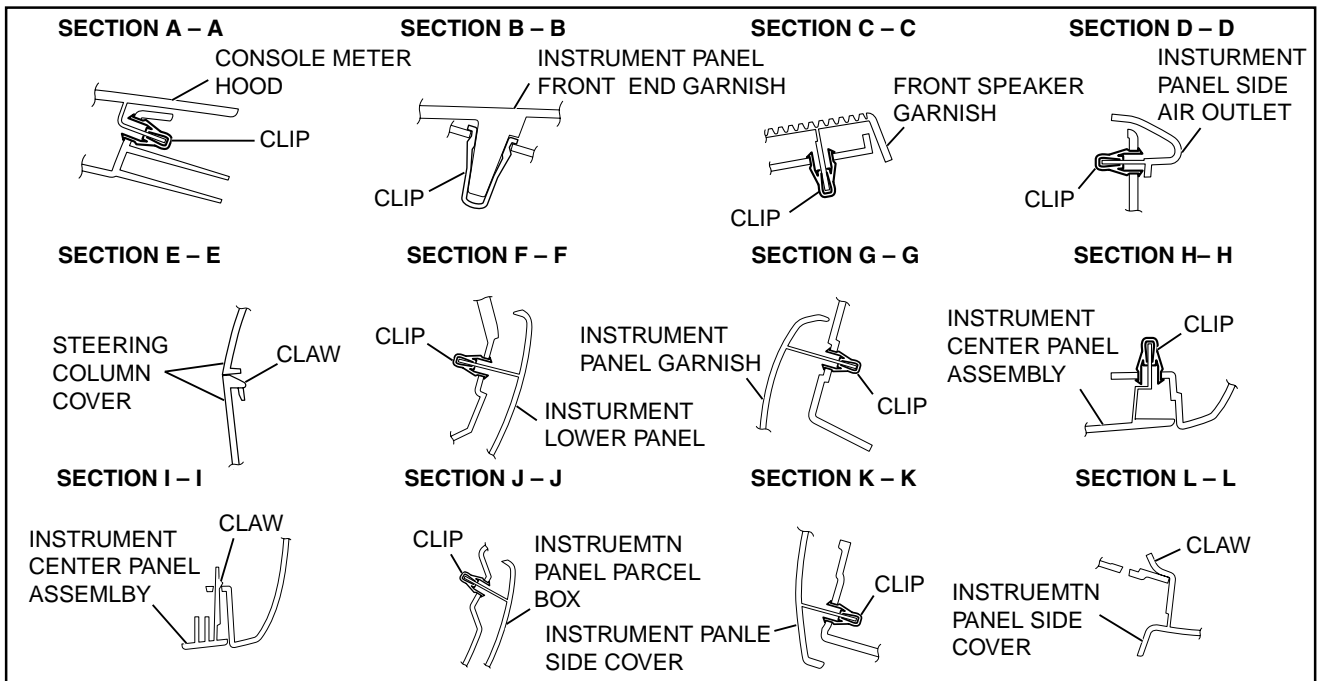
REMOVAL STEPS (Continued)

- CLOCK SPRING CONNECTOR
- COLUMN SWITCH CONNECTOR
- CLOCK SPRING AND COLUMN SWITCH ASSEMBLY (REFER TO GROUP 37, STEERING SHAFT P.37-28.)
- 21. INTERIOR TEMPERATURE SENSOR <VEHICLES WITH AUTOMATIC AIR CONDITIONING> (GROUP 55B, SENSORS P.55B-25.)
- 22. INSTRUMENT PANEL FRONT END GARNISH
- 23. PHOTO SENSOR <VEHICLES WITH AUTOMATIC AIR CONDITIONING> (GROUP 55B, SENSORS P.55B-25.)
- 24. STAY
- FLOOR CONSOLE ASSEMBLY (REFER TO P.52A-9.)
- COWL SIDE TRIM (REFER TO P.52A-10.)
- AIR BAG MODULE CONNECTOR (PASSENGER'S SIDE) (REFER TO GROUP 52B, AIR BAG MODULE AND CLOCK SPRING P.52B-369.)
- 25. INSTRUMENT PANEL ASSEMBLY

CLIP AND CLAW POSITIONS



NOTE
 (1) : CLIP POSITION
 (2) : CLAW POSITION



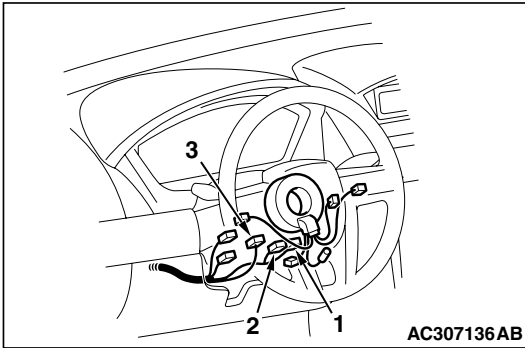
AC307556 AB

REMOVAL SERVICE POINT

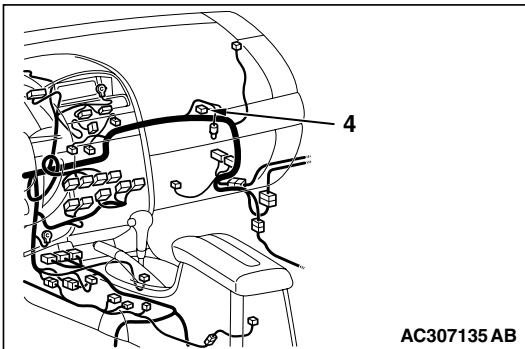
<<A>> CONNECTOR DISCONNECTION

Disconnect the connectors shown in the illustration.

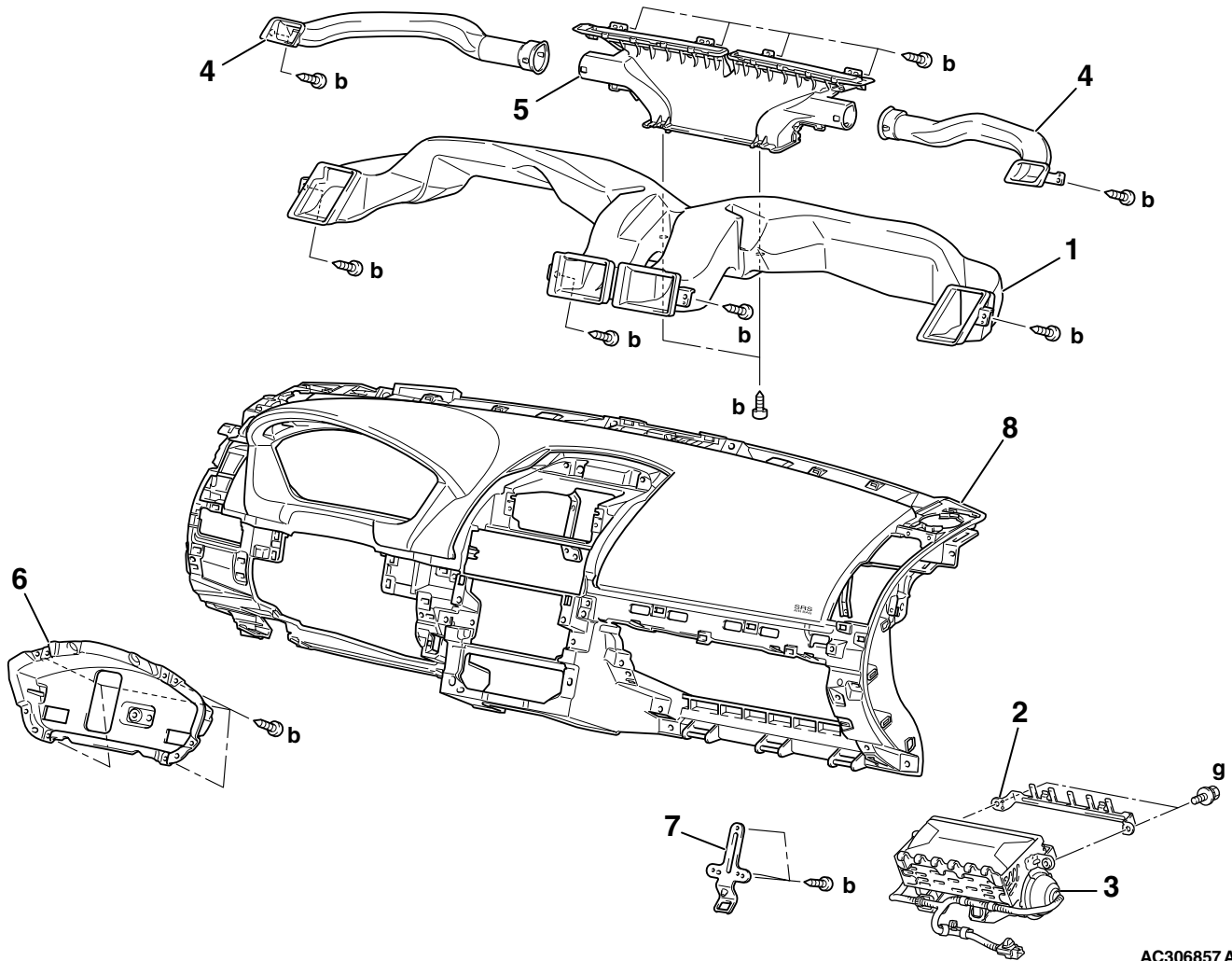
1. CLOCK SPRING CONNECTOR (6)
2. CLOCK SPRING CONNECTOR (4-Y)
3. COLUMN SWITCH CONNECTOR (10)



4. AIR BAG MODULE (FRONT PASSENGER'S SIDE) CONNECTOR (4-Y)



DISASSEMBLY AND ASSEMBLY



AC306857 AB

DISASSEMBLY STEPS

1. DISTRIBUTION DUCT
2. BACKBONE BRACKET
3. AIR BAG MODULE ASSEMBLY
(FRONT PASSENGER'S SIDE)
(REFER TO GROUP 52B, AIR
BAG MODULE(S) AND CLOCK
SPRING P.52B-369.)
4. SIDE DEFROSTER DUCT

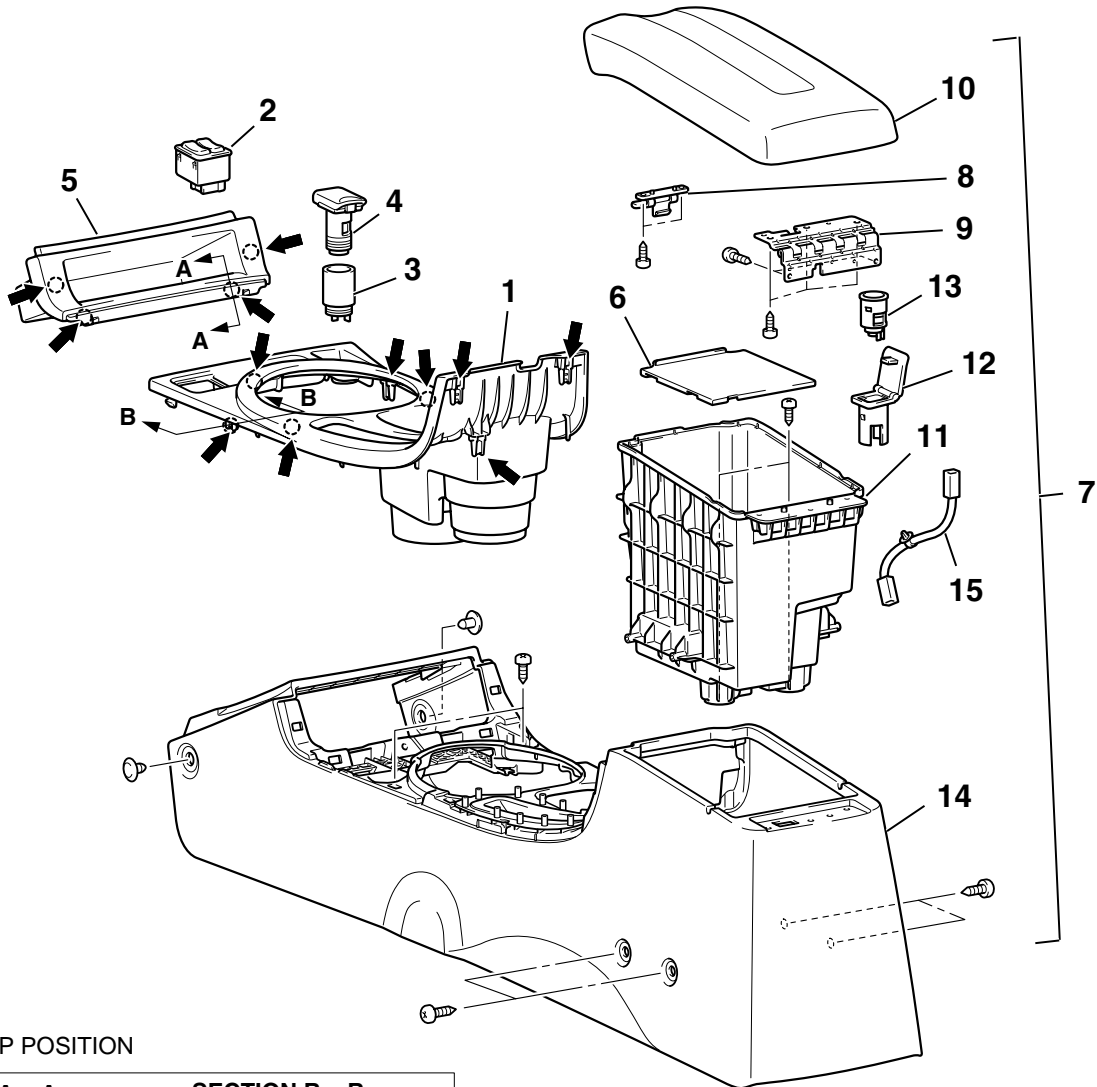
DISASSEMBLY STEPS

5. DEFROSTER NOZZLE
6. COMBINATION METER BRACKET
7. GLOVEBOX STRIKER
8. INSTRUMENT PANEL

FLOOR CONSOLE ASSEMBLY

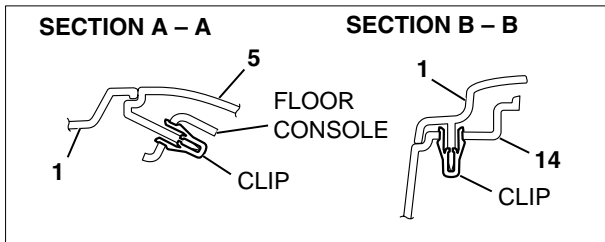
REMOVAL AND INSTALLATION

M1521002200314



NOTE

← : CLIP POSITION



REMOVAL STEPS

1. GEARSHIFT LEVER PANEL
2. HEATED SEAT SWITCH
<VEHICLES WITH HEATED SEAT SWITCH>
3. ACCESSORY SOCKET (ACC)
(REFERTO GROUP 54A,
ACCESSORY SOCKET
[P.54A-131.](#))
4. ACCESSORY SOCKET COVER
5. FRONT BOX
6. PLATE
7. FLOOR CONSOLE ASSEMBLY

REMOVAL STEPS (Continued)

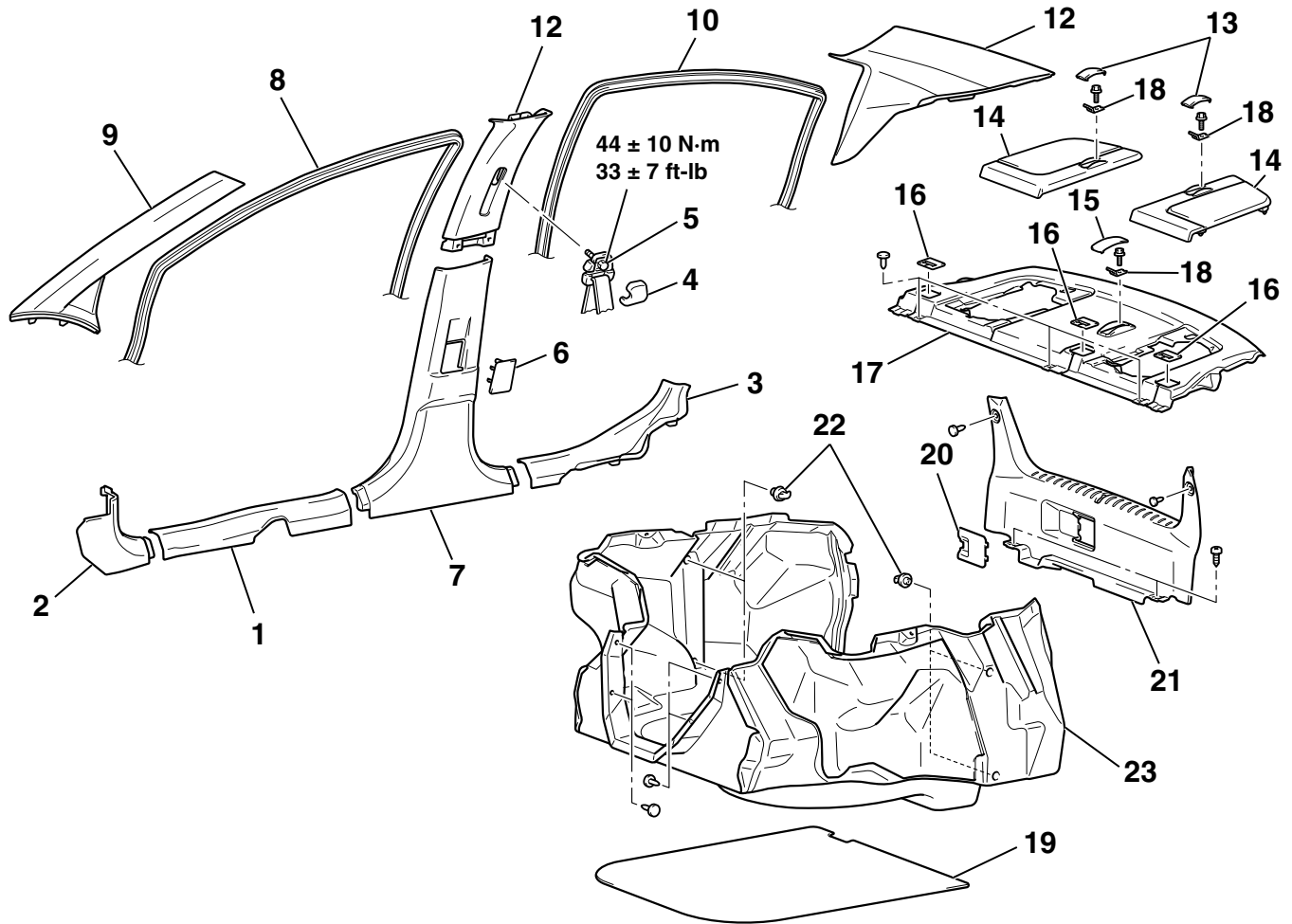
8. LID LOCK LEVER
9. HINGE
10. LID
11. INNER BOX
12. ACCESSORY SOCKET (+B)
(REFERTO GROUP 54A,
ACCESSORY SOCKET
[P.54A-131.](#))
13. ACCESSORY SOCKET COVER
14. FLOOR CONSOLE
15. ACCESSORY SOCKET HARNESS
16. REAR BRACKET

AC307567 AB

TRIMS

REMOVAL AND INSTALLATION

M1521001100455

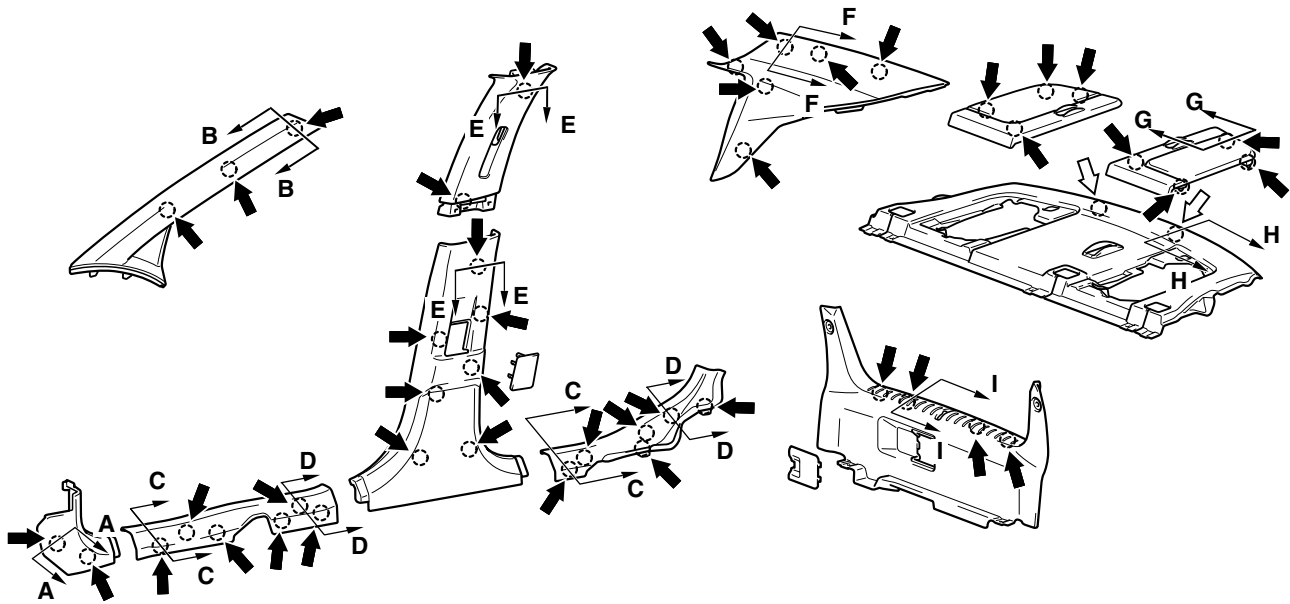


AC306579AB

- | | | | |
|-----|--|----------------------|----------------------------|
| 1. | FRONT SCUFF PLATE | 11. | CENTER PILLAR TRIM UPPER |
| 2. | COWL SIDE TRIM | • | REAR SEATBACK ASSEMBLY |
| • | REAR SEAT CUSHION (REFER TO P.52A-29.) | (REFER TO P.52A-29.) | |
| 3. | REAR SCUFF PLATE | 12. | REAR PILLAR TRIM |
| • | FRONT SEAT BELT LOWER ANCHOR BOLT | 13. | CHILD RESTRAINT LID |
| 4. | FRONT SEAT BELT SASH GUIDE COVER | 14. | REAR SHELF SPEAKER GARNISH |
| 5. | FRONT SEAT BELT SHOLDER ANCHOR BOLT | 15. | CHILD RESTRAINT LID |
| 6. | CENTER PILLAR COVER | 16. | SEAT BELT GARNISH |
| 7. | CENTER PILLAR TRIM LOWER | 17. | REAR SHELF TRIM |
| 8. | FRONT DOOR OPENING TRIM | 18. | CHILD RESTRAINT FITTING |
| 9. | FRONT PILLAR TRIM | 19. | TRUNK ROOM FLOOR BOARD |
| 10. | REAR DOOR OPENING TRIM | 20. | REAR END TRIM COVER |
| | | 21. | REAR END TRIM |
| | | 22. | PARCEL NET ANCHOR |
| | | 23. | TRUNK ROOM TRIM |

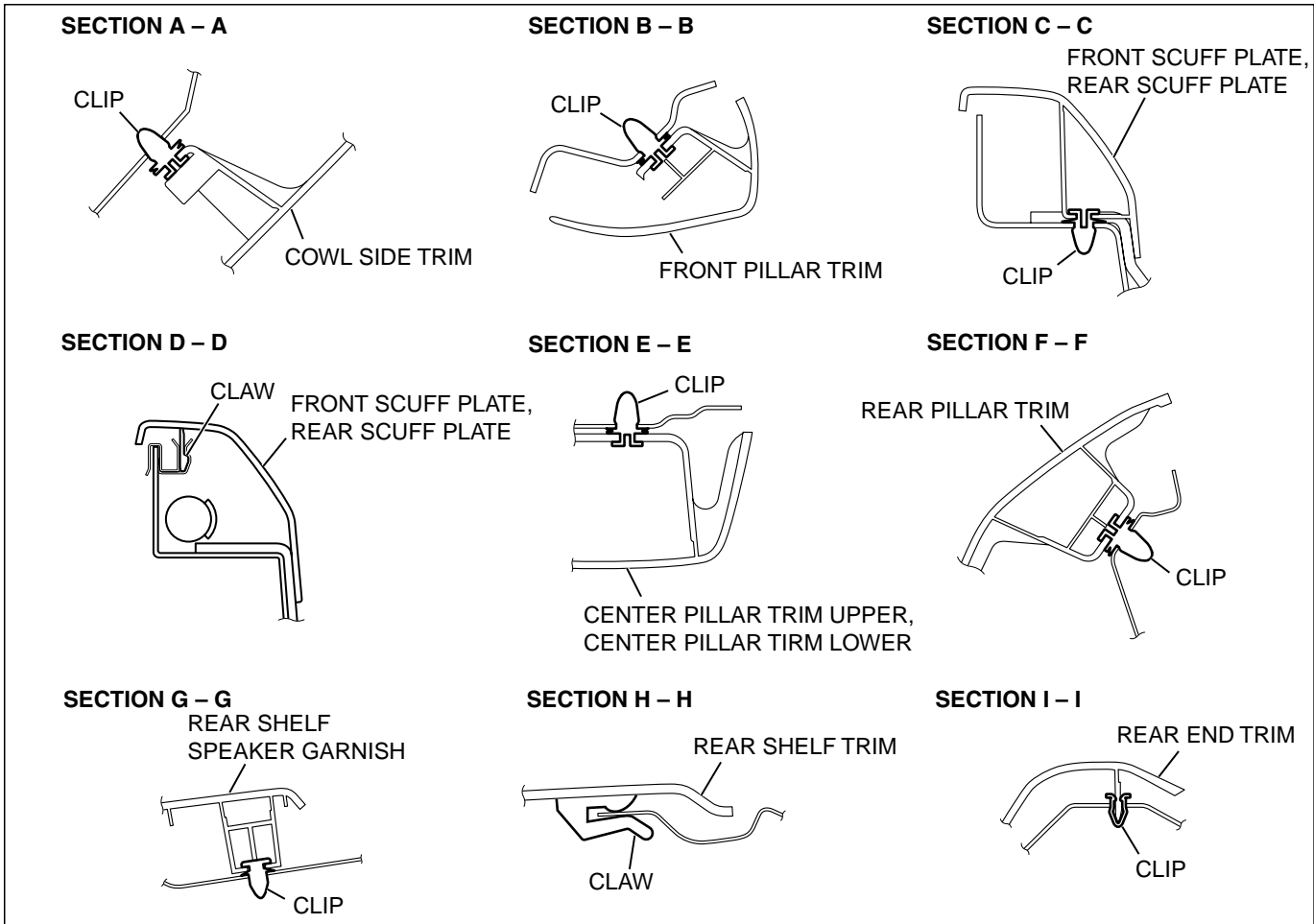
<<A>>

CLIP AND CLAW POSITION



NOTE

- (1) : CLIP POSITION
- (2) : CLAW POSITION

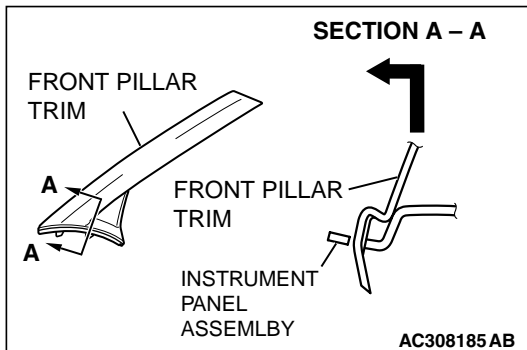


AC307304 AB

REMOVAL SERVICE POINT

<<A>> FRONT PILLAR TRIM REMOVAL

Release the clip and remove the front pillar trim by pulling it to the direction shown.

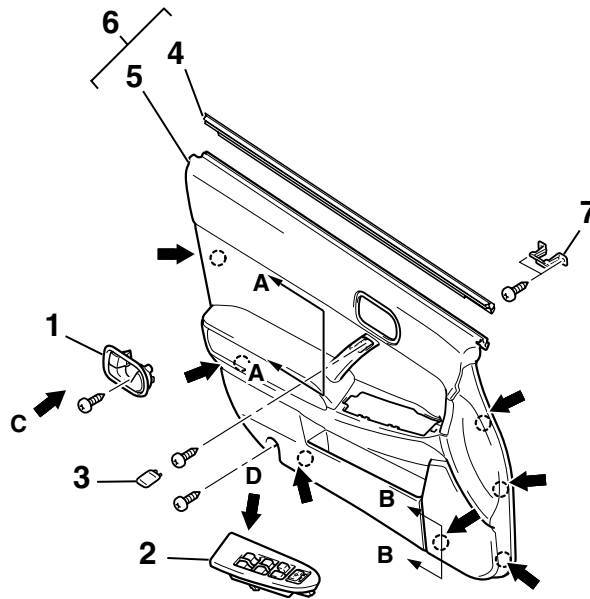


DOOR TRIM

REMOVAL AND INSTALLATION

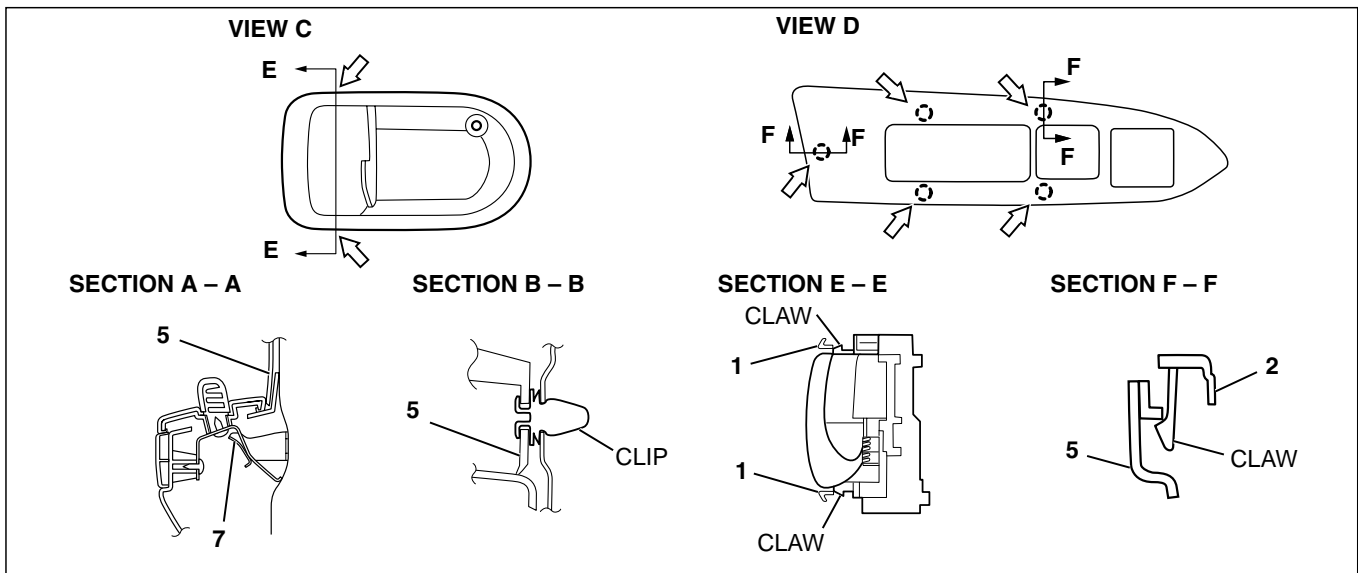
M1521006400332

<FRONT DOOR TRIM>



NOTE

- (1) : CLIP POSITION
 (2) : CLAW POSITION



AC313850AD

<<A>>
<>

REMOVAL STEPS

1. INSIDE HANDLE COVER
2. POWER WINDOW SWITCH
PANEL ASSEMBLY
3. ASSIST GRIP CAP
4. BELT LINE INNER
WEATHERSTRIP
5. FRONT DOOR TRIM ASSEMBLY
7. ARMREST BRACKET

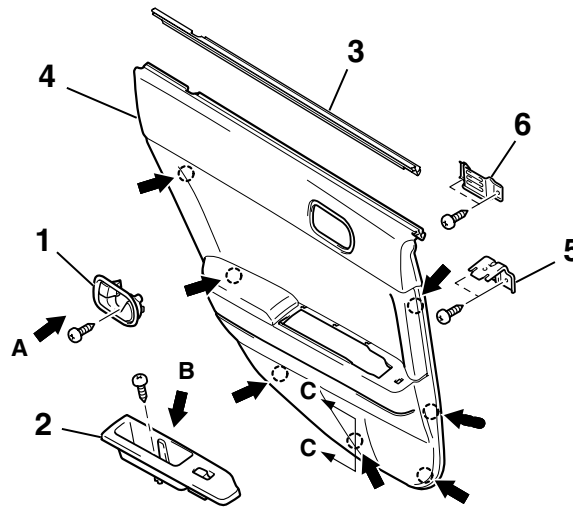
INSTALLATION STEPS

7. ARMREST BRACKET
6. BELT LINE INNER
WEATHERSTRIP AND FRONT
DOOR TRIM ASSEMBLY
3. ASSIST GRIP CAP
2. POWER WINDOW SWITCH
PANEL ASSEMBLY
1. INSIDE HANDLE COVER

Required Special Tool:

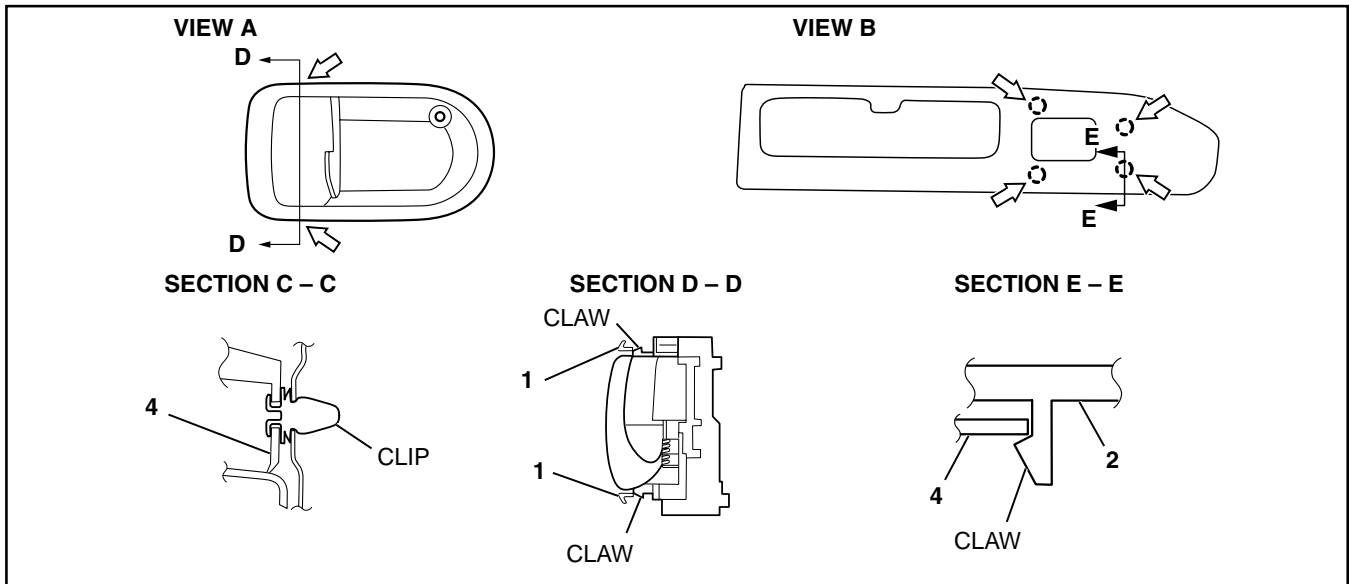
- MB990784: Ornamet Remover

<REAR DOOR TRIM>



NOTE

- (1) : CLIP POSITION
- (2) : CLAW POSITION



AC307435 AB

- <<A>>
- <>
- REMOVAL STEPS**
1. INSIDE HANDLE COVER
 2. POWER WINDOW SWITCH PANEL ASSEMBLY
 3. BELT LINE INNER WEATHERSTRIP
 4. REAR DOOR TRIM ASSEMBLY

- REMOVAL STEPS (Continued)**
5. ARMREST BRACKET
 6. REAR DOOR PANEL BRACKET

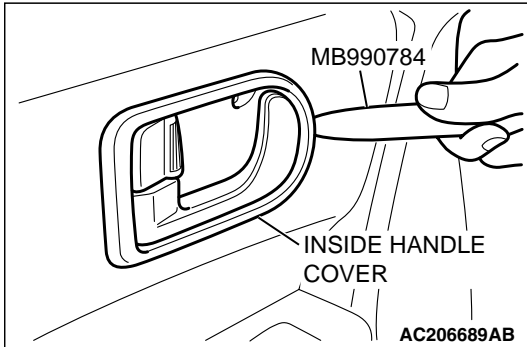
Required Special Tool:

- MB990784: Ornament Remover

REMOVAL SERVICE POINTS

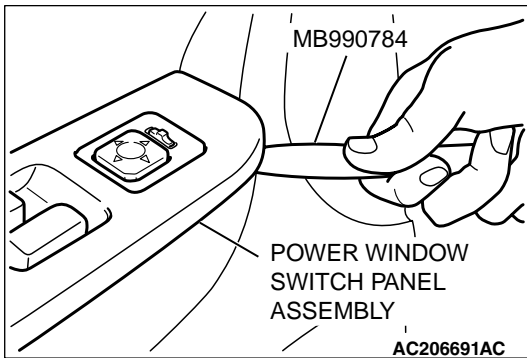
<<A>> INSIDE HANDLE COVER REMOVAL

Insert special tool MB990784 as shown to remove the inside handle cover.



<> POWER WINDOW SWITCH PANEL ASSEMBLY REMOVAL

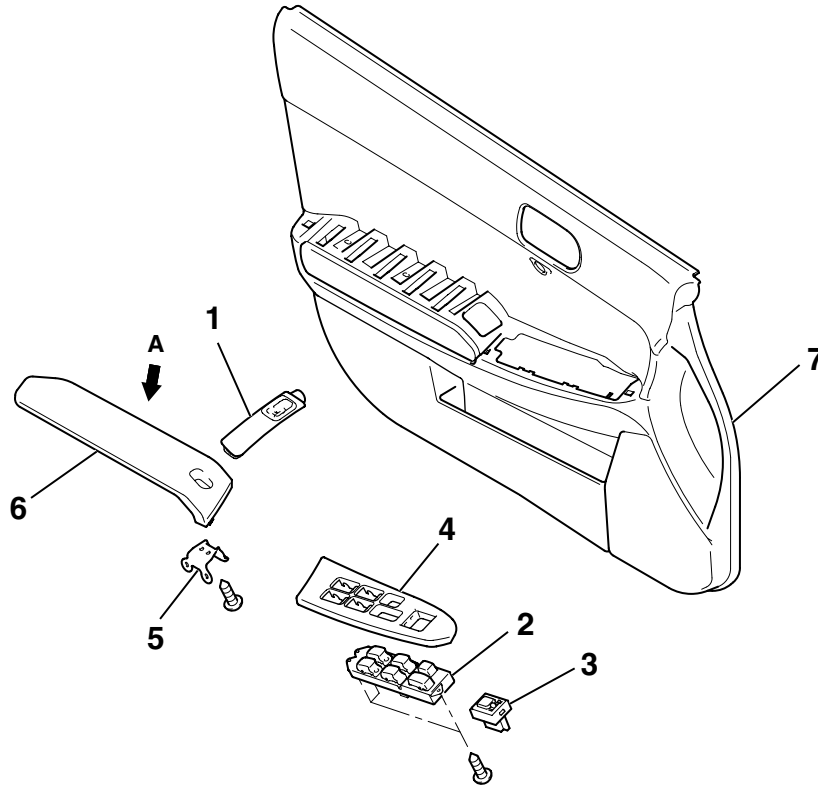
Insert special tool MB990784 as shown to remove the power window switch panel assembly.



DISASSEMBLY AND ASSEMBLY

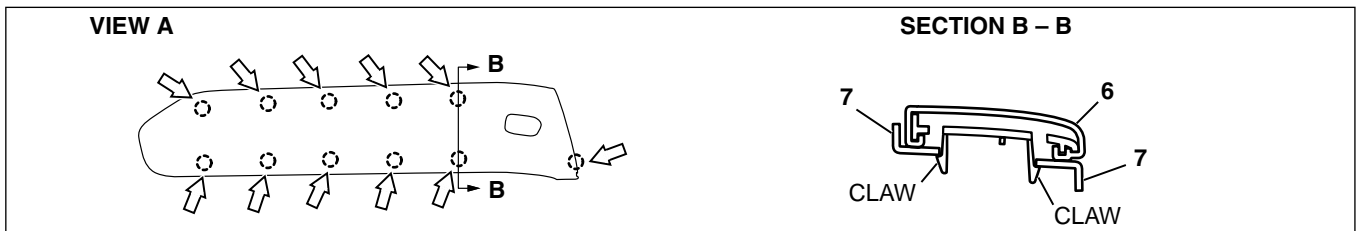
M1521006900100

<FRONT DOOR TRIM>



NOTE

↔ : CLAW POSITION



AC307436 AB

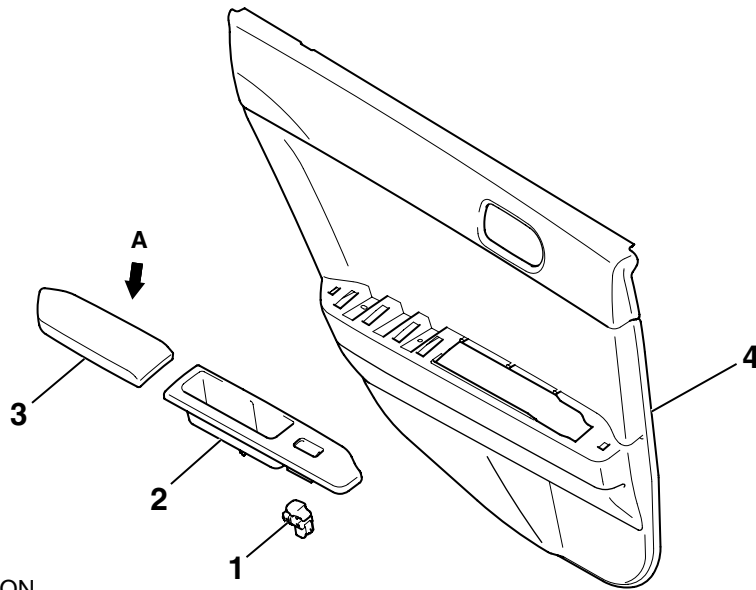
DISASSEMBLY STEPS

1. ASSIST GRIP
2. POWER WINDOW MAIN SWITCH
3. REMOTE CONTROLLED MIRROR SWITCH

DISASSEMBLY STEPS

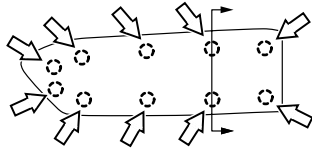
4. POWER WINDOW MAIN SWITCH PANEL
5. ARMREST BRACKET
6. ARMREST
7. FRONT DOOR TRIM

<REAR DOOR TRIM>

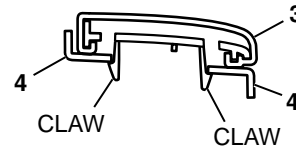


NOTE
 : CLAW POSITION

VIEW A



SECTION B - B



AC307442AB

DISASSEMBLY STEPS

1. POWER WINDOW SUB SWITCH
2. POWER WINDOW SUB SWITCH PANEL

DISASSEMBLY STEPS

3. ARMREST
4. REAR DOOR TRIM

HEADLINING

REMOVAL AND INSTALLATION

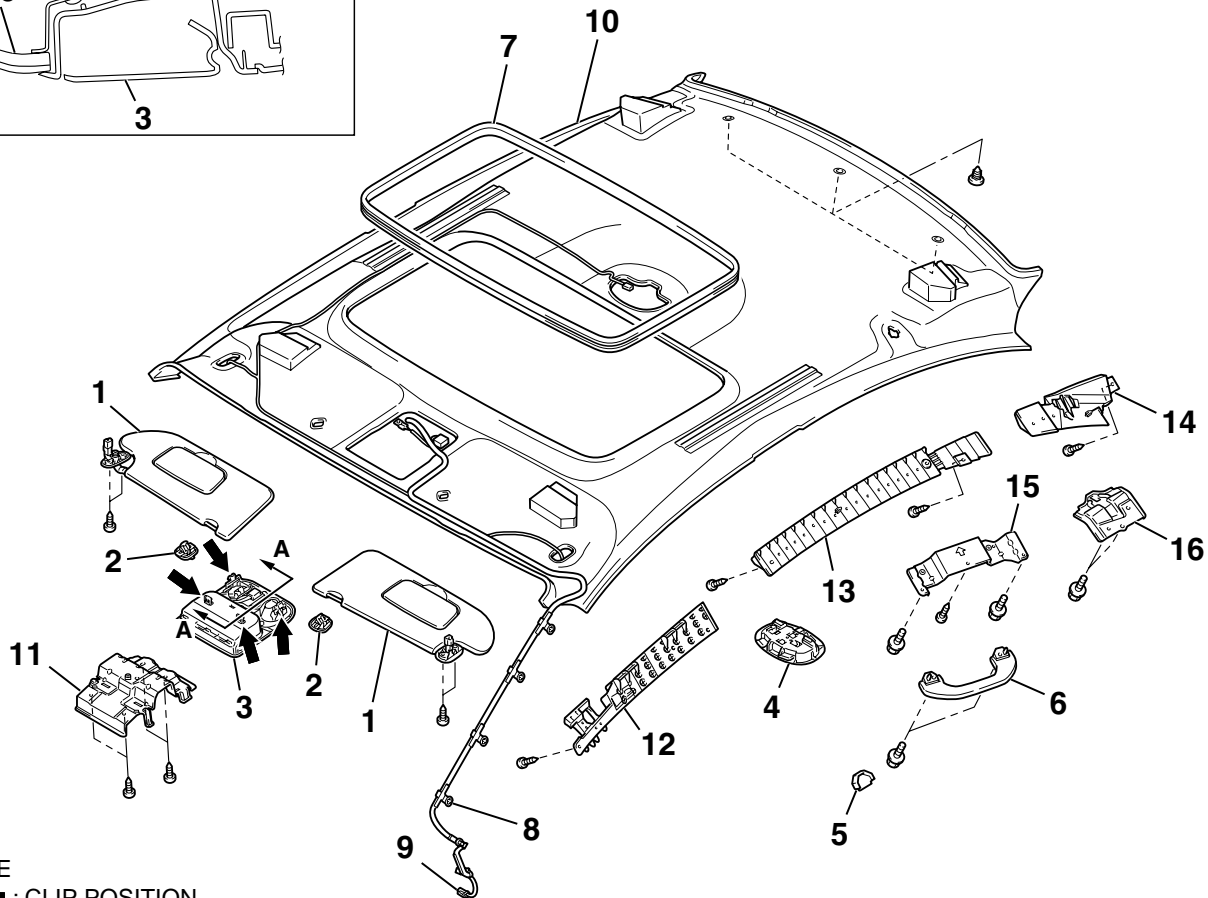
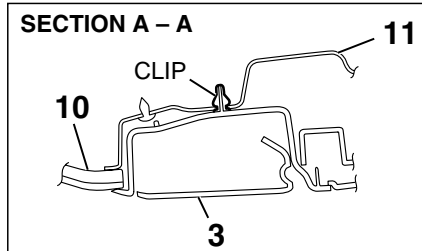
M1521001400360

⚠ WARNING

When removing and installing the front passenger seat, be sure to carry out accuracy check occupant classification sensor after the seat has been installed in the vehicle. (Refer to GROUP 52B, On-Vehicle Service P.52B-355.)

Pre-removal and Post-installation Operation

- Front Seat Assembly (Refer to P.52A-20.)
- Removal and Installation of Rear Seat Cushion Assembly and Rear Seatback Assembly (Refer to P.52A-29.)
- Removal and Installation of Front Pillar Trim, Center Pillar Trim Upper and Rear Pillar Trim (Refer to P.52A-10.)



NOTE
← : CLIP POSITION

AC307811AB

REMOVAL STEPS

1. SUN VISOR
2. SUN VISOR HOLDER
3. OVERHEAD CONSOLE ASSEMBLY
4. DOME LIGHT ASSEMBLY (REFER TO GROUP 54A, DOME LIGHT P.54A-120.)
5. ASSIST GRIP PLUG

REMOVAL STEPS (Continued)

6. ROOF INSIDE ASSIST GRIP <VEHICLES WITH ROOF INSIDE ASSIST GRIP>
7. SUNROOF OPENING TRIM <VEHICLES WITH SUNROOF>
8. ROOF HARNESS CLAMP
 - INSTRUMENT PANEL SIDE COVER (REFER TO P.52A-3.)
9. ROOF HARNESS CONNECTOR

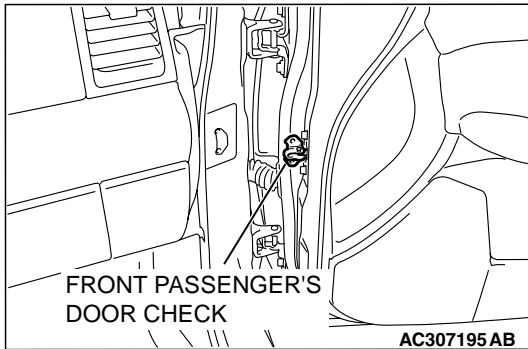
REMOVAL STEPS (Continued)

- FLOOR CONSOLE ASSEMBLY
(REFER TO [P.52A-9.](#))
 - PARKING BRAKE LEVER
ASSEMBLY MOUNTING BOLT
(REFER TO GROUP 36, PARKING
BRAKE LEVER [P.36-6.](#))
- <<A>>
10. HEADLINING ASSEMBLY
 11. OVERHEAD CONSOLE BRACKET
 12. FRONT HEADLINING PAD
 13. CENTER HEADLINING PAD
 14. REAR HEADLINING PAD
 15. ROOF INSIDE ASSIST GRIP
BRACKET <VEHICLES WITH
ROOF INSIDE ASSIST GRIP>
 16. ASSIST GRIP BRACKET

REMOVAL SERVICE POINT

<<A>> HEADLINING ASSEMBLY REMOVAL

Remove the front passenger's door check (body side mounting bolt), open the front passenger's door and remove the headlining assembly. (Refer to GROUP 42, Door Assembly [P.42-37.](#))



INSIDE REAR VIEW MIRROR

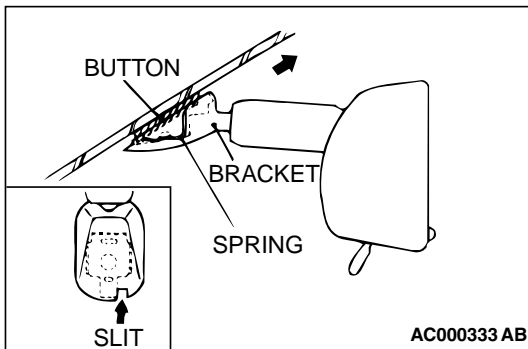
M1521002600248

REMOVAL SERVICE POINT

INSIDE REAR VIEW MIRROR REMOVAL

Insert a narrow flat-tip screwdriver into the slit in the inside rear view mirror bracket, keep the spring pushed in and remove the inside rear view mirror in the direction of the arrow in the illustration.

NOTE: While the spring is pushed in, the connection between the spring and the pawl of the button is released.



FRONT SEAT ASSEMBLY

REMOVAL AND INSTALLATION

M1522001300560

⚠ WARNING

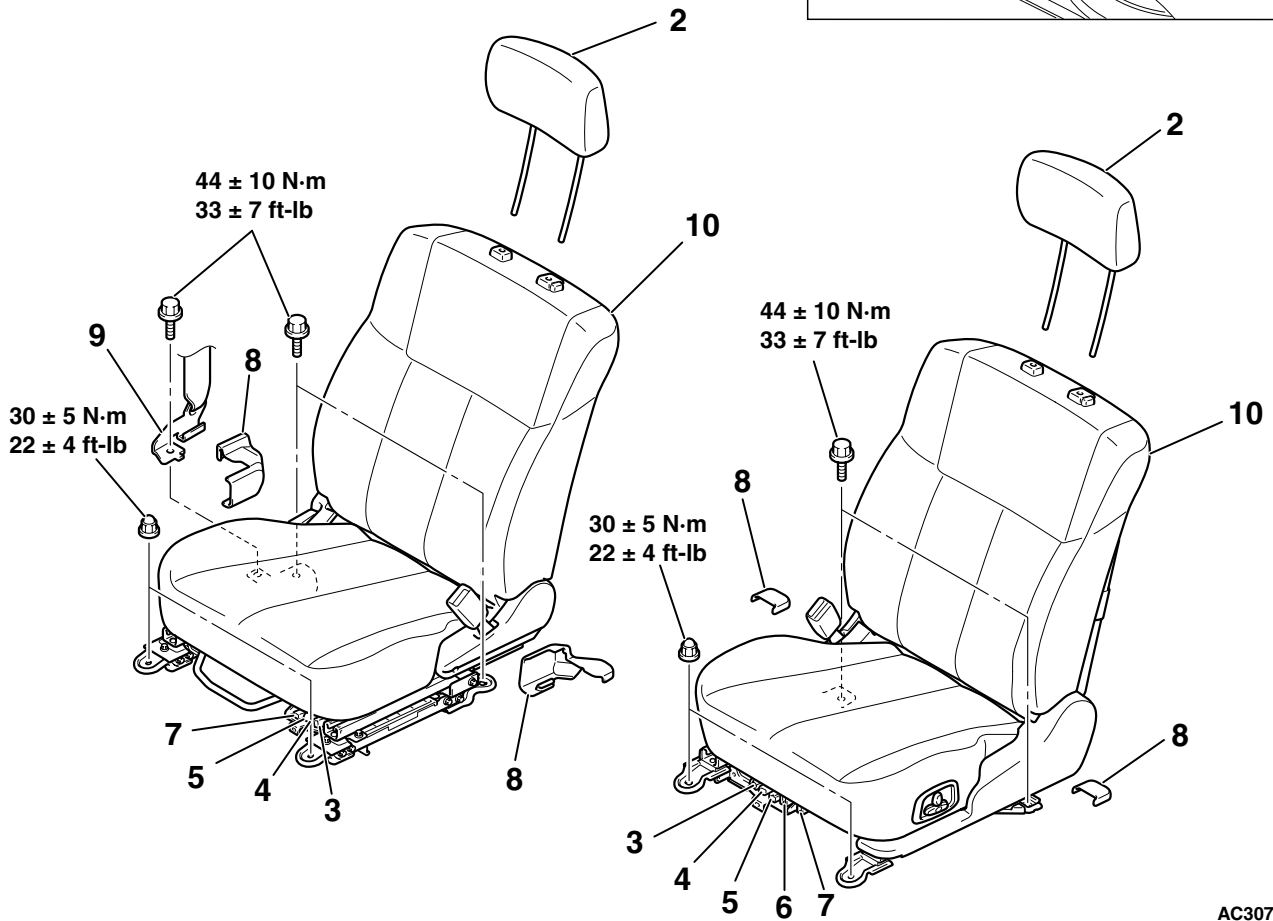
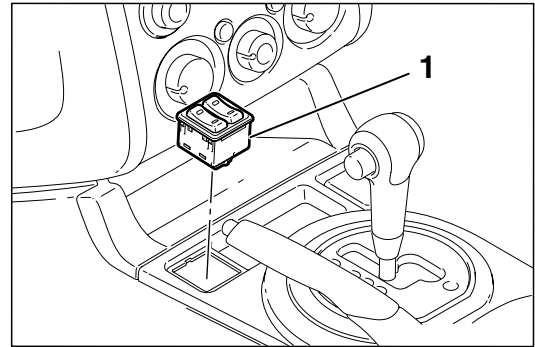
- *Before removing the front seat assembly, refer to GROUP 52B, Service Precautions P.52B-26 and Air Bag Module and Clock Spring P.52B-369.*
- *When removing and installing the front passenger seat, be sure to carry out accuracy check occupant classification sensor after the seat has been installed in the vehicle. (Refer to GROUP 52B, On-Vehicle Service P.52B-355.)*

⚠ CAUTION

Do not impact the seat. If the impact (falling etc.) is applied on the seat with occupant classification sensor, the occupant classification sensor transmitting error may be occurred.)

Post-installation Operation

Adjustment Procedures of Special Function (refer to GROUP 52B, On-Vehicle Service P.52B-355.)



AC307257AB

1. HEATED SEAT SWITCH
<VEHICLES WITH HEATED SEAT>
2. HEADREST
- FRONT SEAT ASSEMBLY
REMOVAL STEPS**
3. SEAT BELT SWITCH
CONNECTOR
4. SEAT SLIDE SENSOR (DRIVER'S
SIDE), OCCUPANT
CLASSIFICATION SENSOR
(PASSENGER'S SIDE)
5. HEATED SEAT CONNECTOR
<VEHICLES WITH HEATED
SEAT>

**FRONT SEAT ASSEMBLY
REMOVAL STEPS (Continued)**

6. POWER SEAT CONNECTOR
<VEHICLES WITH POWER SEAT>
7. SIDE-AIR BAG MODULE
CONNECTOR <VEHICLES WITH
SIDE-AIR BAG>
8. FRONT SEAT REAR ANCHOR
COVER
9. OUTER SEAT BELT
(PASSENGER'S SIDE)
- >>A<< 10. FRONT SEAT ASSEMBLY

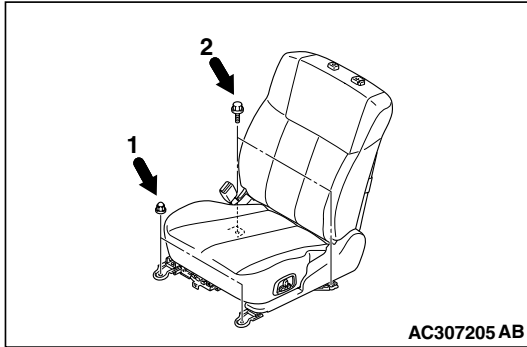
INSTALLATION SERCIVE POINT

>>A<< FRONT SEAT ASSEMBLY INSTALLATION

⚠ CAUTION

Install the front passenger's seat assembly before installing the outer seat belt.

1. Temporarily tighten the nuts in mounting locations shown in the illustration with no weight on the front seat cushion and check the operation of the seat slide.
2. Temporarily tighten the bolts in mounting locations shown in the illustration with no weight on the front seat cushion.
3. Tighten the nuts and bolts in all mounting locations to the specified torque.



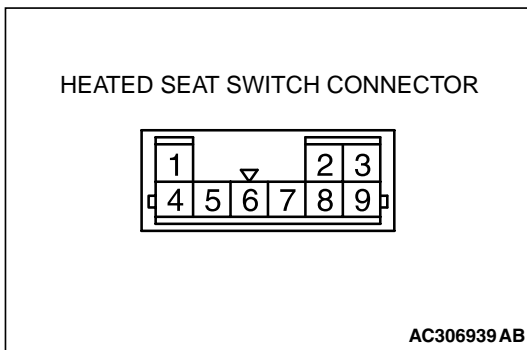
INSPECTION

M1522005500113

HEATED SEAT SWITCH CHECK

CONTINUITY TEST OF HEATED SEAT SWITCH

1. Check for continuity between terminals.



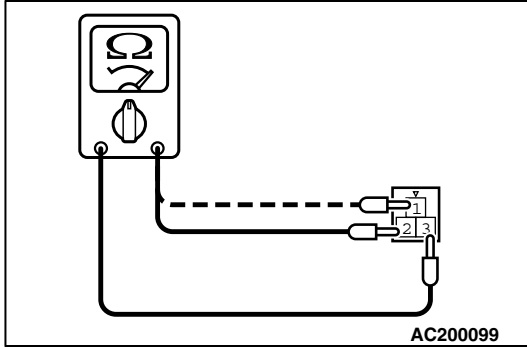
ITEM	SWITCH POSITION	TESTER CONNECTION	SPECIFIED CONDITION
Driver's seat side	HI	1 - 3, 1 - 5, 1 - 8, 3 - 5, 3 - 8, 5 - 8	Less than 2 ohms
	OFF	1 - 3, 1 - 5, 1 - 8, 3 - 5, 3 - 8, 5 - 8	Open circuit
	LO	3 - 5, 3 - 8, 5 - 8	Less than 2 ohms
Front passenger's seat side	HI	4 - 5, 4 - 8, 4 - 9, 5 - 8, 5 - 9, 8 - 9	Less than 2 ohms
	OFF	4 - 5, 4 - 8, 4 - 9, 5 - 8, 5 - 9, 8 - 9	Open circuit
	LO	5 - 8, 5 - 9, 8 - 9	Less than 2 ohms

2. Check that the indicator is lighted at HI or LO when battery voltage is supplied to terminal 5 and terminal 8 is grounded.
3. Check that indicator is lighted when battery voltage is supplied to terminals 2 and terminal 6.

SEAT CUSHION HEATER CHECK

Measure the resistance between terminals.

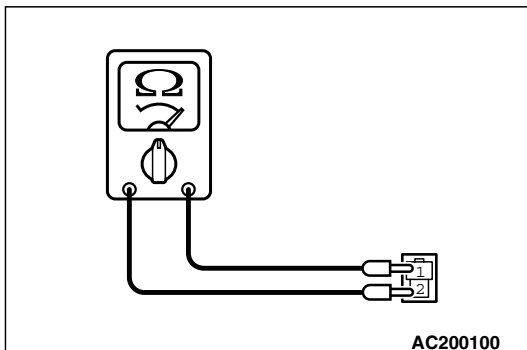
- Standard value: At room temperature 20 °C (68 °F)**
- Between terminals 2 and terminal 3: Approximately 4.0 ohms ± 9%**
- Between terminals 1 and terminal 3: 4.1 ohms ± 9%**



SEATBACK HEATER CHECK

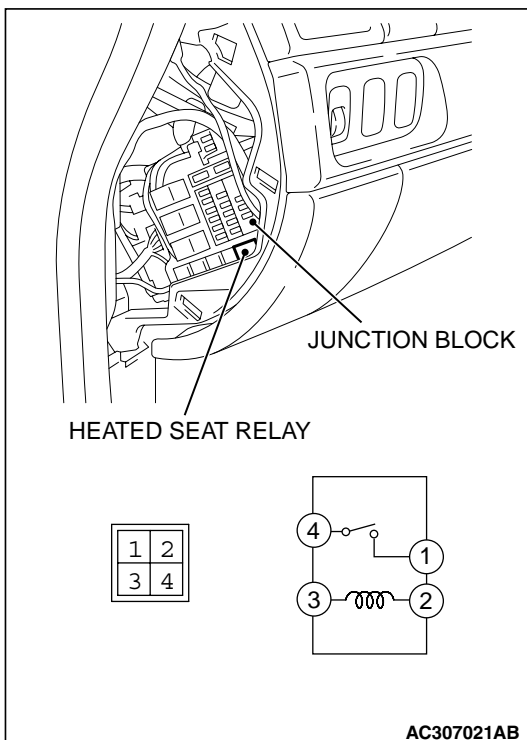
Measure the resistance between terminals.

- Standard value: At room temperature 20 °C (68 °F)**
- Approximately 3.6 ohms ± 9%**



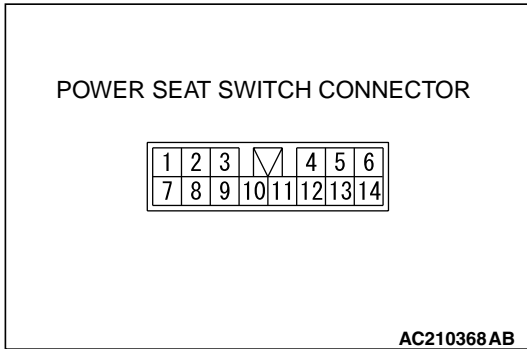
HEATED SEAT RELAY CONTINUITY CHECK

1. Remove the instrument lower cover.
2. Remove the junction block mounting and slide the junction block to check the heated seat.



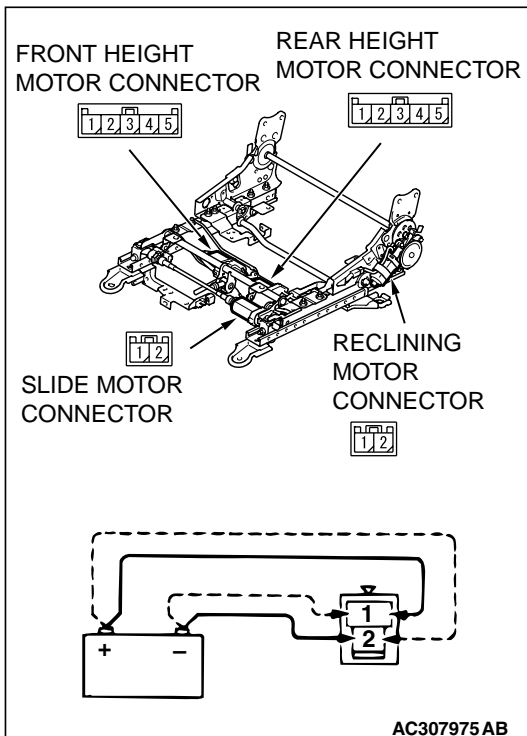
BATTERY VOLTAGE	TESTER CONNECTION	SPECIFIED CONDITION
Not applied	1-4	Open circuit
<ul style="list-style-type: none"> • Connect terminal 2 to the positive battery terminal • Connect terminal 3 to the negative battery terminal 	1-4	Less than 2 ohms

POWER SEAT MANUAL SWITCH CONTINUITY CHECK



SWITCH POSITION		TESTER CONNECTION	SPECIFIED CONDITION
Reclining switch	FRONT	2 - 9, 1 - 12	Less than 2 ohms
	REAR	1 - 9, 2 - 12	Less than 2 ohms
Slide switch	FRONT	1 - 5, 2 - 6	Less than 2 ohms
	REAR	2 - 5, 1 - 6	Less than 2 ohms
Front height switch	UP	1 - 7, 2 - 8	Less than 2 ohms
	DOWN	2 - 7, 1 - 8	Less than 2 ohms
Rear height switch	UP	2 - 13, 1 - 14	Less than 2 ohms
	DOWN	1 - 13, 2 - 14	Less than 2 ohms

OPERATION CHECK OF POWER SEAT MOTOR



1. Disconnect the connector of each motor.
2. Check that when the battery is directly connected to the motor terminal, the motor turns smoothly and each adjusting mechanism operates as stated below for each motor:
 - (1) Connect the battery power supply to the terminal 1 and ground the terminal 2 for the rear reclining side, front slide side.
 - (2) Connect the battery power supply to the terminal 2 and ground the terminal 1 for the front reclining side, rear slide side.
 - (3) Connect the battery power supply to the terminal 2 and ground the terminal 3 for the front height down side and connect the battery power supply to the terminal 3 and ground the terminal 2 for the front height up side.
 - (4) Connect the battery power supply to the terminal 3 and ground the terminal 4 for the rear height up side and connect the battery power supply to the terminal 4 and ground the terminal 3 for the rear height down side.
3. If abnormality was found, check the power seat adjuster assembly.

DISASSEMBLY STEPS

1. HINGE COVER
2. INNER SEAT BELT
3. SNAP RING <VEHICLES WITHOUT POWER SEAT>
4. HIGHT ADJUSTER KNOB <VEHICLES WITHOUT POWER SEAT>
5. RECLINING ADJUSTER LEVER <VEHICLES WITHOUT POWER SEAT> <<A>>
6. RECLINING KNOB <VEHICLES WITH POWER SEAT>
7. SLIDE ADJUSTER KNOB <VEHICLES WITH POWER SEAT>
8. POWER SEAT SWITCH GARNISH <VEHICLES WITH POWER SEAT>
9. POWER SEAT SWICH <VEHICLES WITH POWER SEAT>
10. SEAT CUHION ASSEMBLY
11. SIDE SHIELD COVER
12. SEAT CUSHION COVER
13. SEAT CUSHION HEATER <VEHICLES WITH HEATED SEAT>
14. SEAT CUSHION PAD

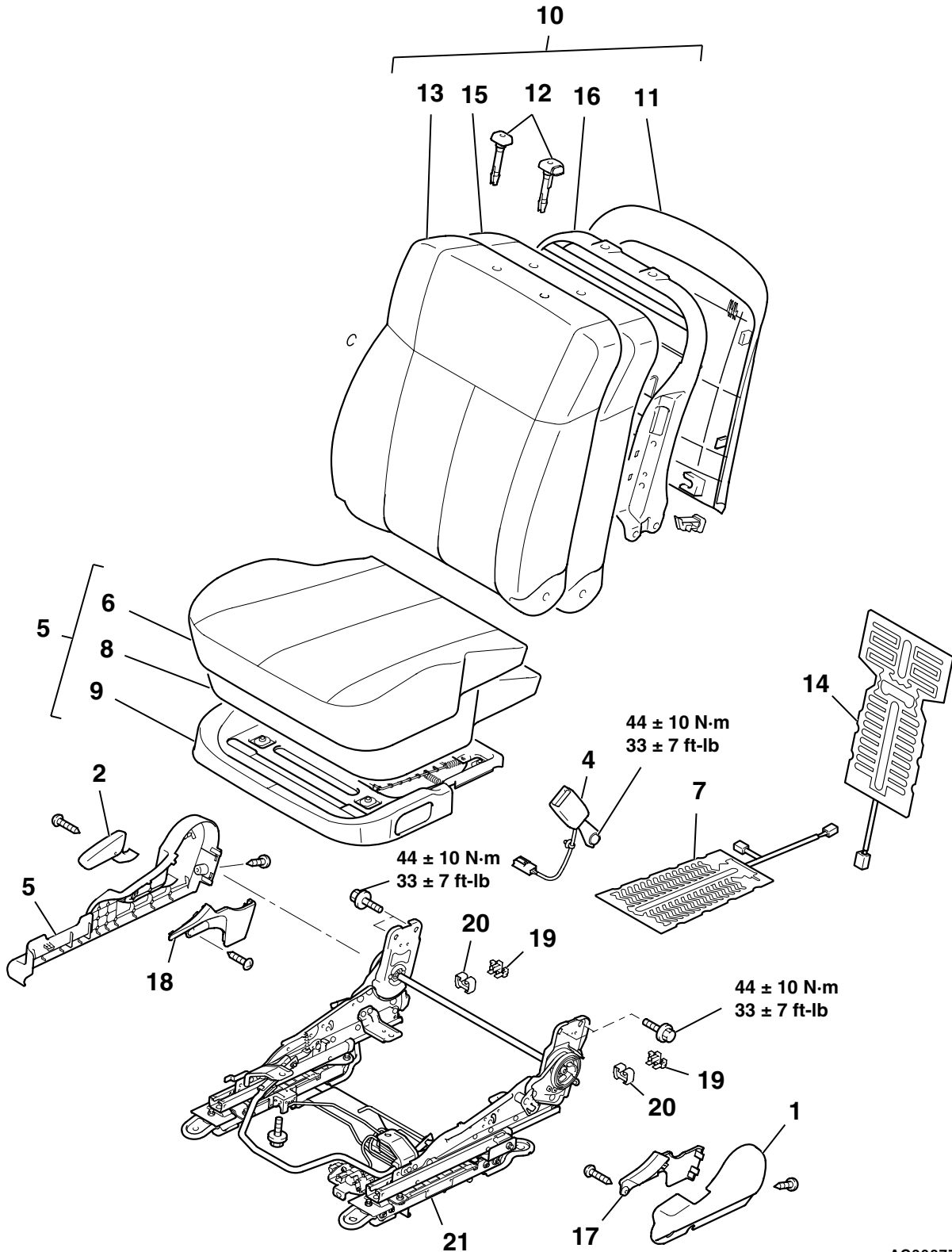
DISASSEMBLY STEPS

15. SEAT CUSHION FRAME
16. SEATBACK ASSEMBLY
17. LUMBAR SUPPORT LEVER CAP <VEHICLES WITH POWER SEAT>
18. LUMBAR SUPPORT LEVER <VEHICLES WITH POWER SEAT>
19. SEATBACK PANEL
20. HEADREST GUIDE
21. SEATBACK COVER
22. SEATBACK HEATER <VEHICELES WITH HEATED SEAT>
23. SEATBACK PAD
24. SEATBACK FRAME
25. SIDE SHIELD COVER INNER (RH)
26. SIDE SHIELD COVER INNER (LH)
27. SLIDE SENSOR HARNESS
28. SLIDE SENSOR
29. POWER SEAT HARNESS <VEHICLES WITH POWER SEAT>
30. SLIDE ADJUSTER CAP A
31. SLIDE ADJUSTER CAP B
32. SLIDE ADJUSTER

<RH SIDE>

⚠ WARNING

- Never attempt to disassemble or repair the occupant classification-ECU or the occupant classification sensor. If faulty, replace it.
- Do not drop or subject the occupant classification-ECU and occupant classification sensor to impact or vibration. If denting, cracking, deformation, or rust are discovered in the occupant classification-ECU or the occupant classification sensor, replace it with a new occupant classification-ECU or the occupant classification sensor.

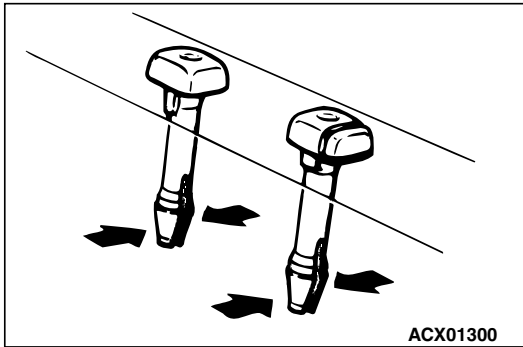


REMOVAL STEPS

1. HINGE COVER
2. RECLINING ADJUSTER LEVER <<A>>
3. SIDE SHIELD COVER
4. INNER SEAT BELT
5. SEAT CUSHION ASSEMBLY
6. SEAT CUSHION COVER
7. SEAT CUSHION HEATER
<VEHICLES WITH HEATED SEAT>
8. SEAT CUSHION PAD
9. SEAT CUSHION FRAME
10. SEATBACK ASSEMBLY <>

REMOVAL STEPS (Continued)

11. SEATBACK PANEL
12. HEADREST GUIDE
13. SEATBACK COVER
14. SEATBACK HEATER <VEHICLES WITH HEATED SEAT>
15. SEATBACK PAD
16. SEATBACK FRAME
17. SIDE SHIELD COVER INNER (RH)
18. SIDE SHIELD COVER INNER (LH)
19. SLIDE ADJUSTER CAP A
20. SLIDE ADJUSTER CAP B
21. SLIDE ADJUSTER

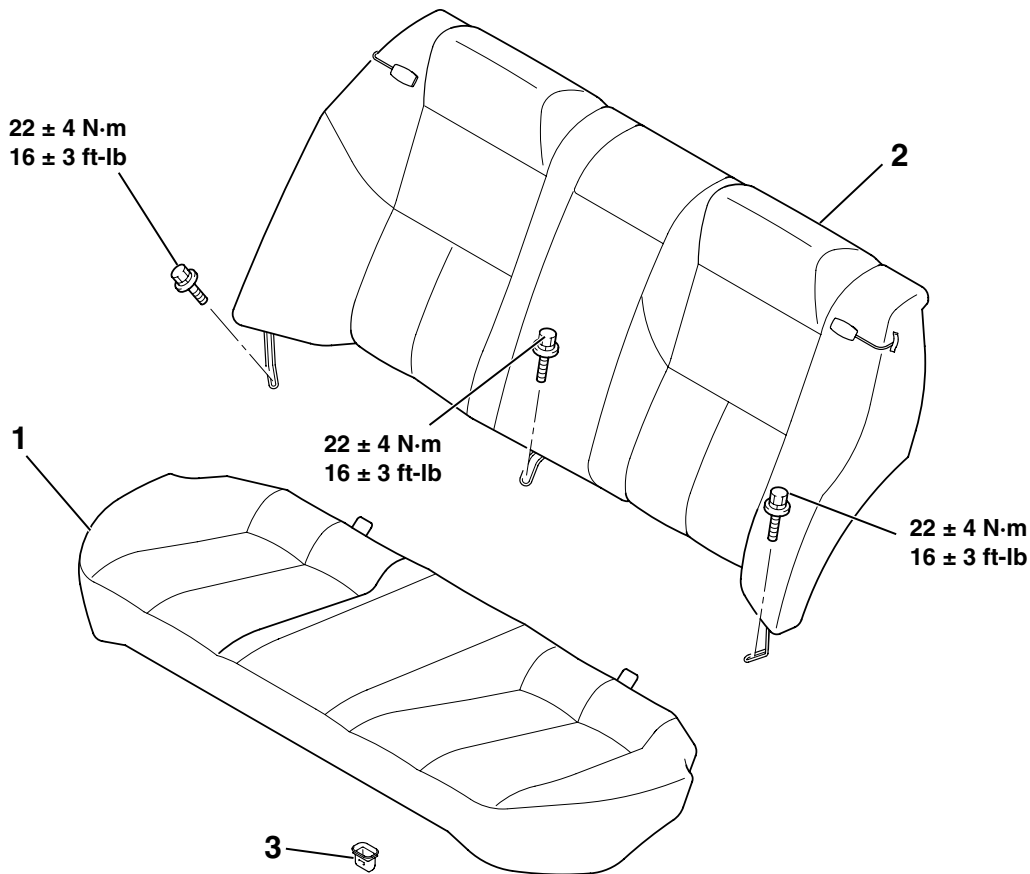
REMOVAL SERVICE POINT**<<A>> HEADREST GUIDE REMOVAL****<> SLIDE ADJUSTER REMOVAL****⚠ WARNING**

Do not remove the occupant classification-ECU and the occupant classification sensor from the slide adjuster.

REAR SEAT ASSEMBLY

REMOVAL AND INSTALLATION

M1522001800297



AC306948AB

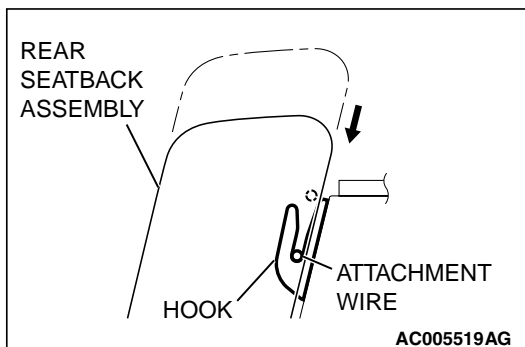
- >>B<<** 1. **REMOVAL STEPS**
REAR SEAT CUSHION
ASSEMBLY

- >>A<<** 2. **REMOVAL STEPS (Continued)**
REAR SEATBACK ASSEMBLY
3. REAR SEAT HOOK

INSTALLATION SERVICE POINTS

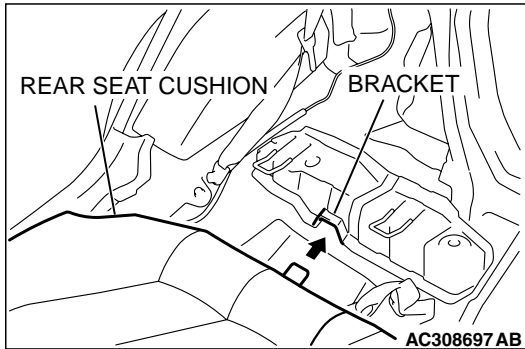
>>A<< INSTALLATION OF REAR SEATBACK ASSEMBLY

Press the rear seatback assembly in the direction shown in the illustration and fit the attachment wire into the hook securely to install the rear seatback assembly.

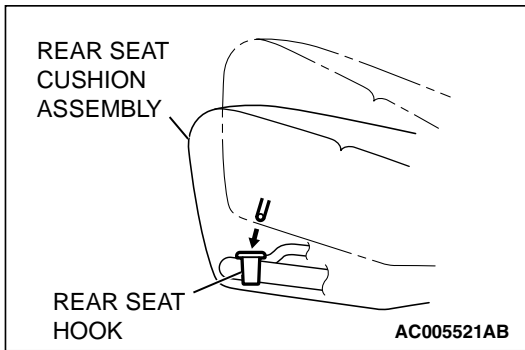


**>>B<< INSTALLATION OF REAR SEAT CUSHION
ASSEMBLY**

1. Fit the rear seat cushion into the bracket securely.

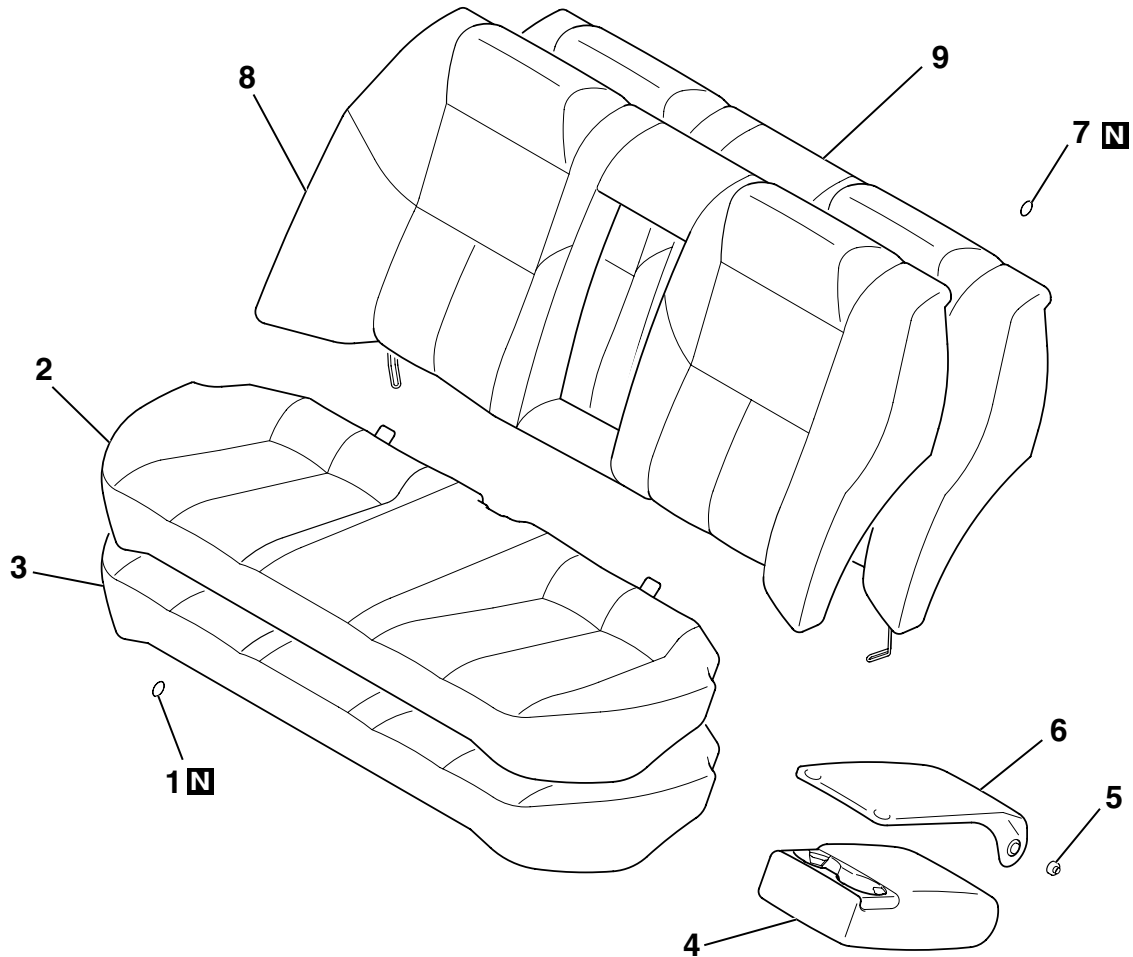


2. Fit the rear seat cushion into the rear seat hook securely.



DISASSEMBLY AND REASSEMBLY

M1522002000357



AC306949AB

DISASSEMBLY STEPS

1. HOG RING
2. SEAT CUSHION COVER
3. SEAT CUSHION PAD
4. ARMREST
5. BUSH

DISASSEMBLY STEPS

6. ARMREST PAD
7. HOG RING
8. SEATBACK COVER
9. SEATBACK PAD

FRONT SEAT BELT

REMOVAL AND INSTALLATION

M1523001300370

CAUTION

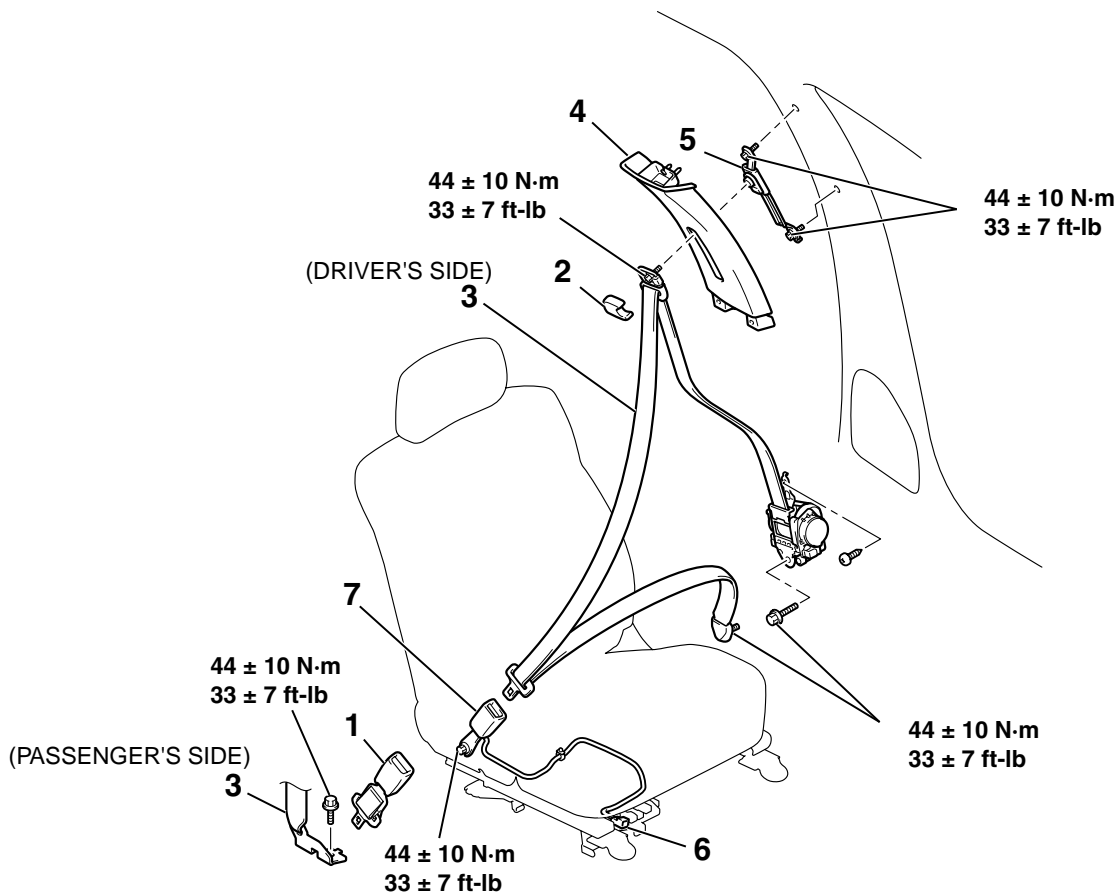
- When removing and installing the inner seat belt, be sure to carry out accuracy check occupant classification sensor after the seat has been installed in the vehicle. (Refer to GROUP 52B, On-Vehicle Service P.52B-355.)
- SRS: Before removing and installing the seat belts with pre-tensioner, refer to GROUP 52B, Seat Belt with Pre-tensioner P.52B-380.

Pre-removal and Post-installation Operation

- Turn the ignition key to the LOCK (OFF) position.
- Disconnect the negative battery terminal.

Post-installation Operation

Adjustment Procedures of Special Function (refer to GROUP 52B, On-Vehicle Service P.52B-380.)



AC306996 AB

1. EXTENDER SEAT BELT ASSEMBLY*
- OUTER SEAT BELT REMOVAL STEPS**
2. SASH GUIDE COVER
 - CENTER PILLAR TRIM LOWER (REFER TO P.52A-10.)
 3. OUTER SEAT BELT (REFER TO GROUP 52B, SEAT BELTS WITH PRE-TENSIONER P.52B-380.)

OUTER SEAT BELT REMOVAL STEPS (Continued)

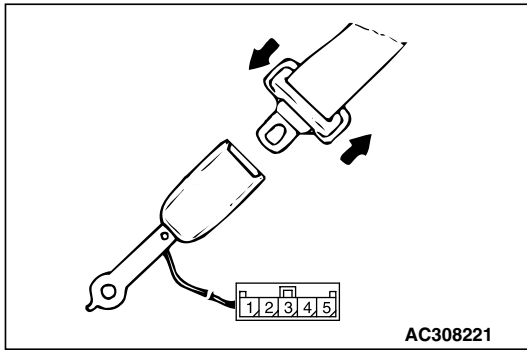
4. CENTER PILLAR TRIM UPPER (REFER TO P.52A-10.)
 5. ADJUSTABLE SEAT BELT ANCOR
- INNER SEAT BELT**
6. SEAT BELT SWITCH CONNECTOR
 - SHIELD COVER (REFER TO P.52A-25.)
 7. INNER SEAT BELT

NOTE: *If so equipped

INSPECTION

M1523004400116

SEAT BELT SWITCH CONTINUITY CHECK

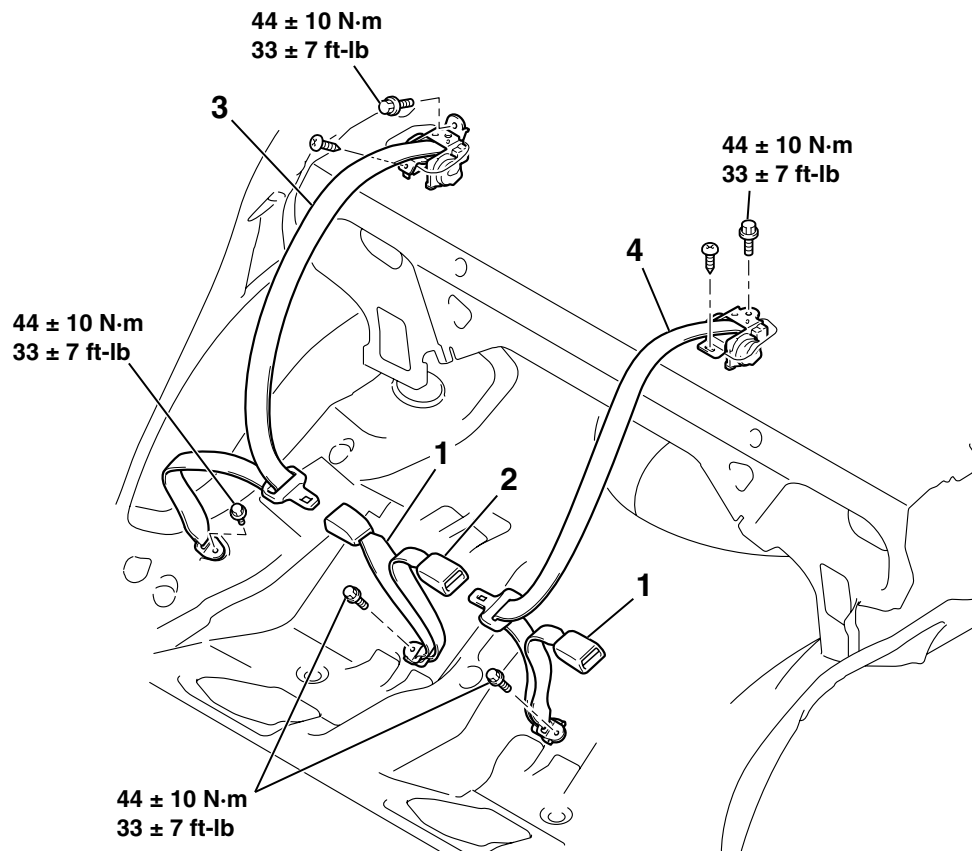


ITEM	TESTER CONNECTION	SPECIFIED CONDITION
Fastened seat belt	1 – 2	Open circuit
Unfastened seat belt	1 – 2	Less than 2 ohms

REAR SEAT BELT

REMOVAL AND INSTALLATION

M1523001600371



AC307024 AB

REMOVAL STEPS

- REAR SEAT CUSHION ASSEMBLY (REFER TO [P.52A-29.](#))
- 1. INNER SEAT BELT
- 2. CENTER SEAT BELT INNER

REMOVAL STEPS (Continued)

- REAR SHELF TRIM (REFER TO [P.52A-10.](#))
- 3. OUTER SEAT BELT
- 4. CENTER SEAT BELT OUTER

SPECIFICATIONS**FASTENER TIGHTENING SPECIFICATIONS**

M1521004100227

ITEM	SPECIFICATION
FRONT SEAT	
Front seatback assembly bolt	44 ± 10 N·m (33 ± 7 ft-lb)
Front seat cushion assembly bolt	12 ± 2 N·m (102 ± 22 in-lb)
Front seat bolt	44 ± 10 N·m (33 ± 7 ft-lb)
Front seat nut	30 ± 5 N·m (22 ± 4 ft-lb)
REAR SEAT	
Seatback assembly bolt	22 ± 4 N·m (16 ± 3 ft-lb)
FRONT SEAT BELT	
Adjustable seat belt anchor bolt	44 ± 10 N·m (33 ± 7 ft-lb)
Inner seat belt bolt	44 ± 10 N·m (33 ± 7 ft-lb)
Outer seat belt bolt	44 ± 10 N·m (33 ± 7 ft-lb)
REAR SEAT BELT	
Center seat belt outer and inner seat belt bolt	44 ± 10 N·m (33 ± 7 ft-lb)
Inner seat belt bolt	44 ± 10 N·m (33 ± 7 ft-lb)
Seat belt shoulder anchor bolt	44 ± 10 N·m (33 ± 7 ft-lb)
Seat belt lower anchor bolt	44 ± 10 N·m (33 ± 7 ft-lb)