

## GROUP 80B

# SPLICE LOCATIONS

## CONTENTS

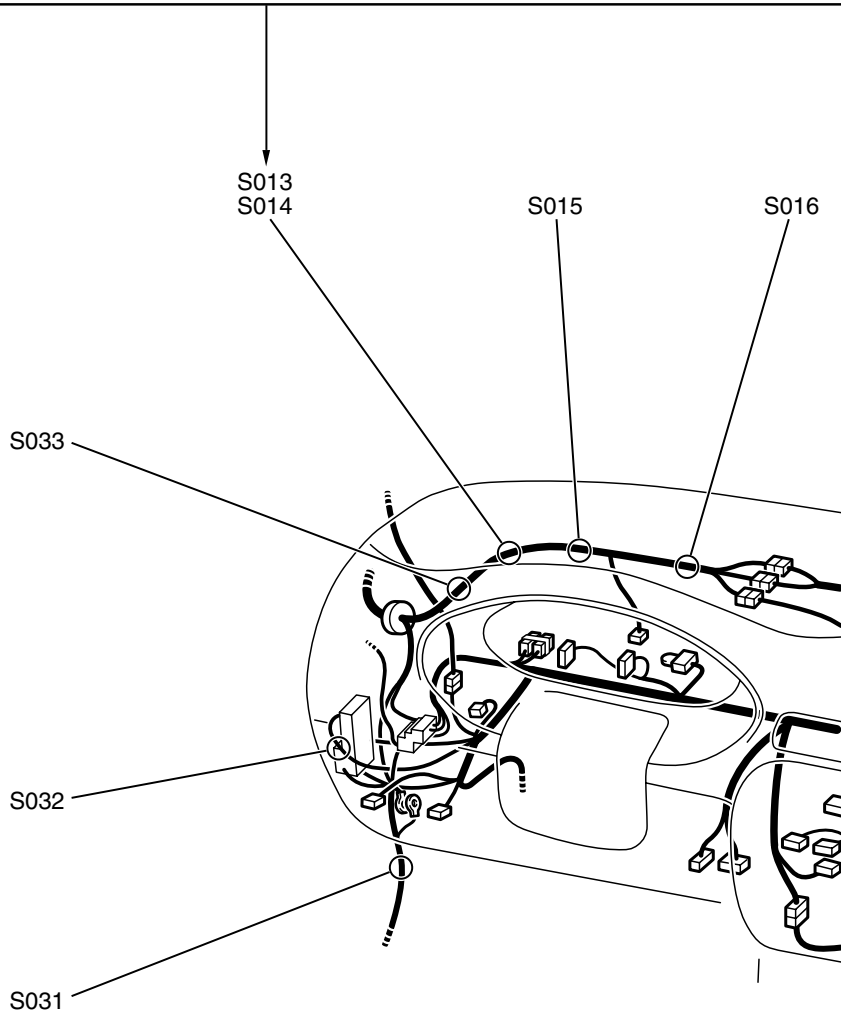
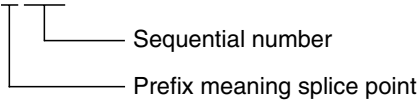
HOW TO READ SPLICE LOCATIONS	80B-2	DASH PANEL.....	80B-8
INDEX.....	80B-3	FLOOR AND ROOF .....	80B-10
ENGINE COMPARTMENT.....	80B-5	DOOR .....	80B-11
ENGINE AND TRANSAXLE <2.4L ENGINE>.....	80B-6	LUGGAGE COMPARTMENT.....	80B-12
ENGINE AND TRANSAXLE <3.8L ENGINE>.....	80B-7		

# HOW TO READ SPLICE LOCATIONS

"Splice locations" describes splice points of each wiring harness on an actual vehicle. Some variations are included in one splice location. Accordingly, some locations may not be applicable for individual vehicles.

Indicates a splice point number.  
The splice point numbers are identical to those in "CIRCUIT DIAGRAMS," making them easy to use.  
In addition, the splice point numbers are usually numbered clockwise.

Example: S 013



# INDEX

M180200900955

This index shows the page numbers where the splice locations are.

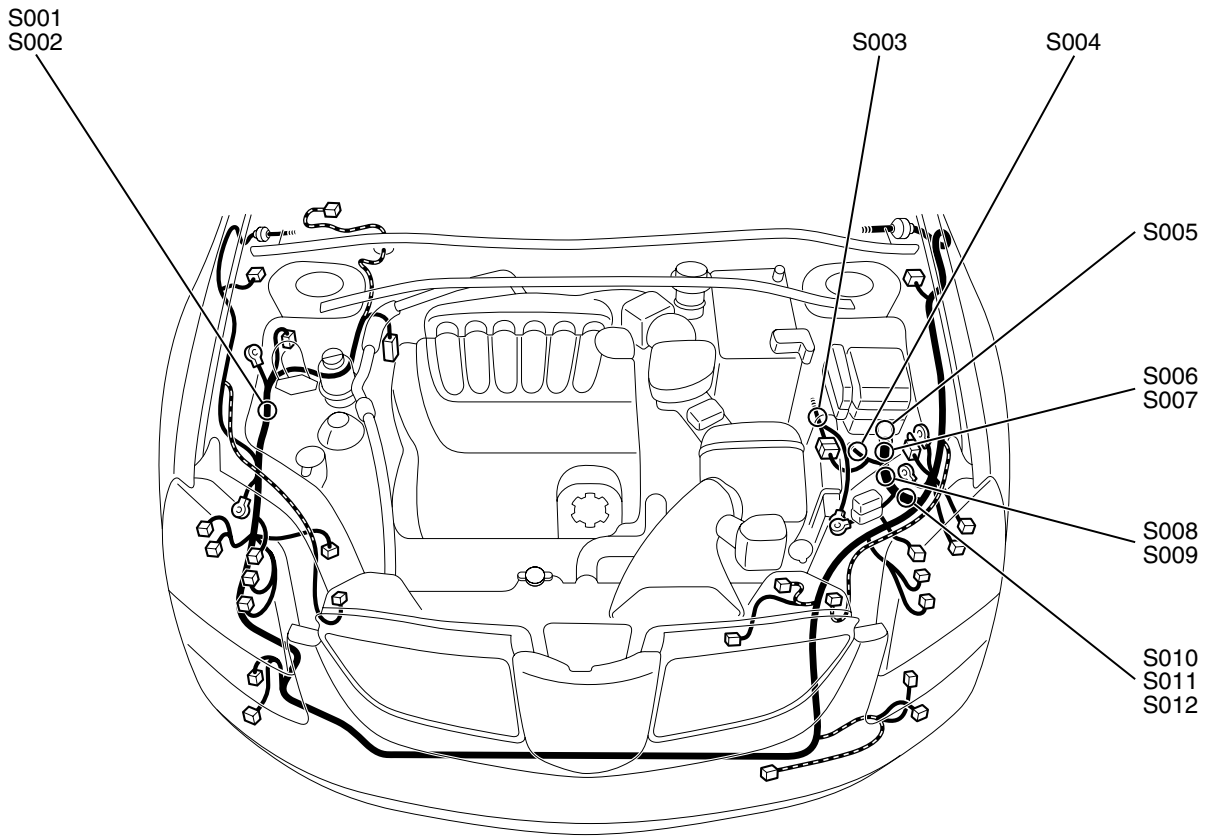
<b>SPLICE LOCATION NO.</b>	<b>PAGE</b>	<b>SPLICE LOCATION NO.</b>	<b>PAGE</b>	<b>SPLICE LOCATION NO.</b>	<b>PAGE</b>	<b>SPLICE LOCATION NO.</b>	<b>PAGE</b>
S001	P.80B-5	S030	P.80B-6	S059	P.80B-9	S088	P.80B-10
S002	P.80B-5	S031	P.80B-6	S060	P.80B-9	S089	P.80B-10
S003	P.80B-5	S032	P.80B-7	S061	P.80B-9	S090	P.80B-10
S004	P.80B-5	S033	P.80B-7	S062	P.80B-9	S091	P.80B-10
S005	P.80B-5	S034	P.80B-7	S063	P.80B-9	S092	P.80B-10
S006	P.80B-5	S035	P.80B-7	S064	P.80B-9	S093	P.80B-10
S007	P.80B-5	S036	P.80B-7	S065	P.80B-9	S094	P.80B-10
S008	P.80B-5	S037	P.80B-7	S066	P.80B-9	S095	P.80B-10
S009	P.80B-5	S038	P.80B-7	S067	P.80B-9	S096	P.80B-10
S010	P.80B-5	S039	P.80B-7	S068	P.80B-9	S097	P.80B-10
S011	P.80B-5	S040	P.80B-7	S069	P.80B-9	S098	P.80B-10
S012	P.80B-5	S041	P.80B-7	S070	P.80B-9	S099	P.80B-10
S013	P.80B-6	S042	P.80B-7	S071	P.80B-9	S100	P.80B-10
S014	P.80B-6	S043	P.80B-7	S072	P.80B-8	S101	P.80B-10
S015	P.80B-6	S044	P.80B-7	S073	P.80B-8	S102	P.80B-10
S016	P.80B-6	S045	P.80B-7	S074	P.80B-8	S103	P.80B-10
S017	P.80B-6	S046	P.80B-7	S075	P.80B-8	S104	P.80B-11
S018	P.80B-6	S047	P.80B-7	S076	P.80B-8	S105	P.80B-11
S019	P.80B-6	S048	P.80B-7	S077	P.80B-8	S106	P.80B-11
S020	P.80B-6	S049	P.80B-7	S078	P.80B-8	S107	P.80B-11
S021	P.80B-6	S050	P.80B-7	S079	P.80B-8	S108	P.80B-12
S022	P.80B-6	S051	P.80B-7	S080	P.80B-8	S109	P.80B-12
S023	P.80B-6	S052	P.80B-7	S081	P.80B-8	S110	P.80B-9
S024	P.80B-6	S053	P.80B-8	S082	P.80B-8	S111	P.80B-9
S025	P.80B-6	S054	P.80B-8	S083	P.80B-8	S112	P.80B-9
S026	P.80B-6	S055	P.80B-8	S084	P.80B-8	S113	P.80B-9
S027	P.80B-6	S056	P.80B-8	S085	P.80B-8	S114	P.80B-9
S028	P.80B-6	S057	P.80B-8	S086	P.80B-8		
S029	P.80B-6	S058	P.80B-9	S087	P.80B-8		

---

## NOTES

**ENGINE COMPARTMENT**

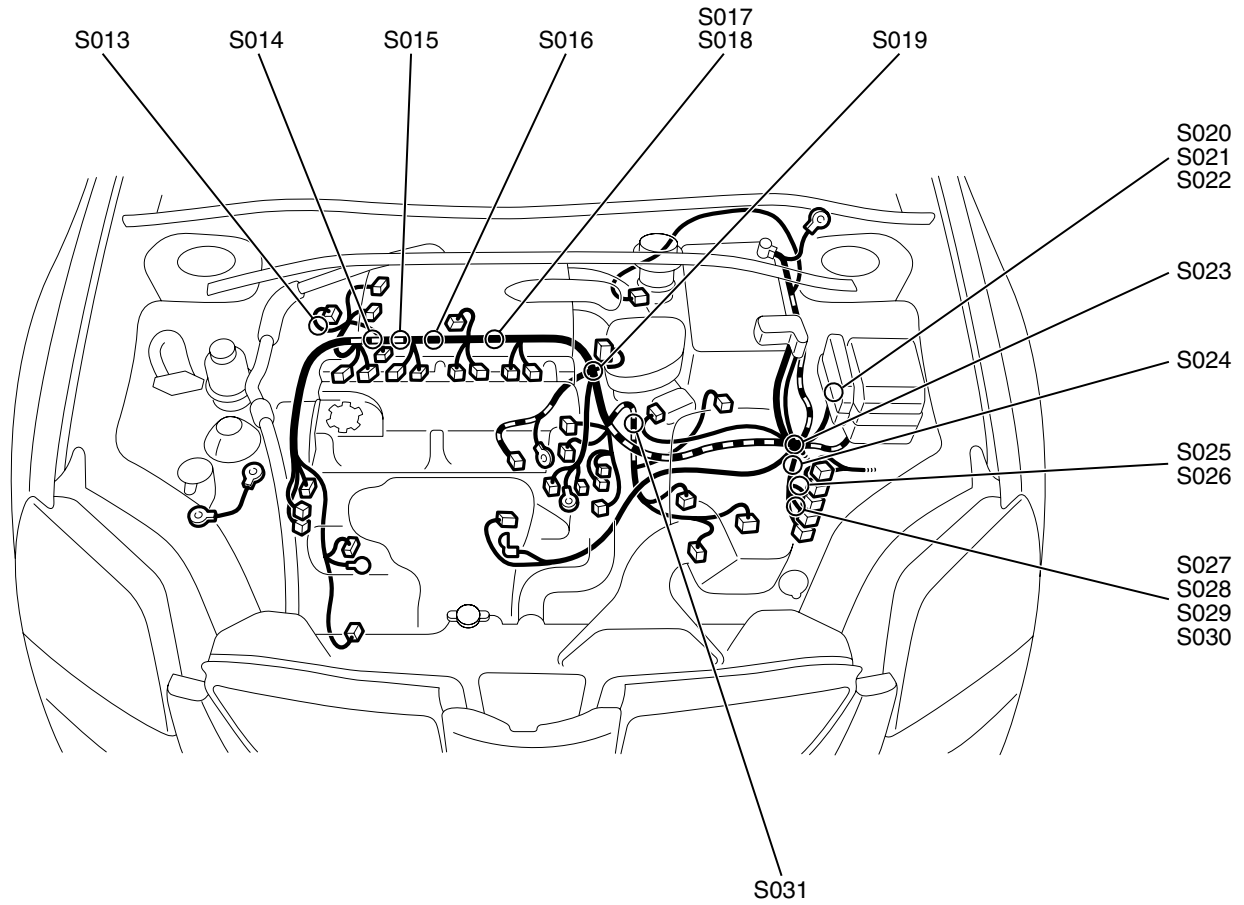
M1802000200729



AC400679AB

**ENGINE AND TRANSAXLE <2.4L ENGINE>**

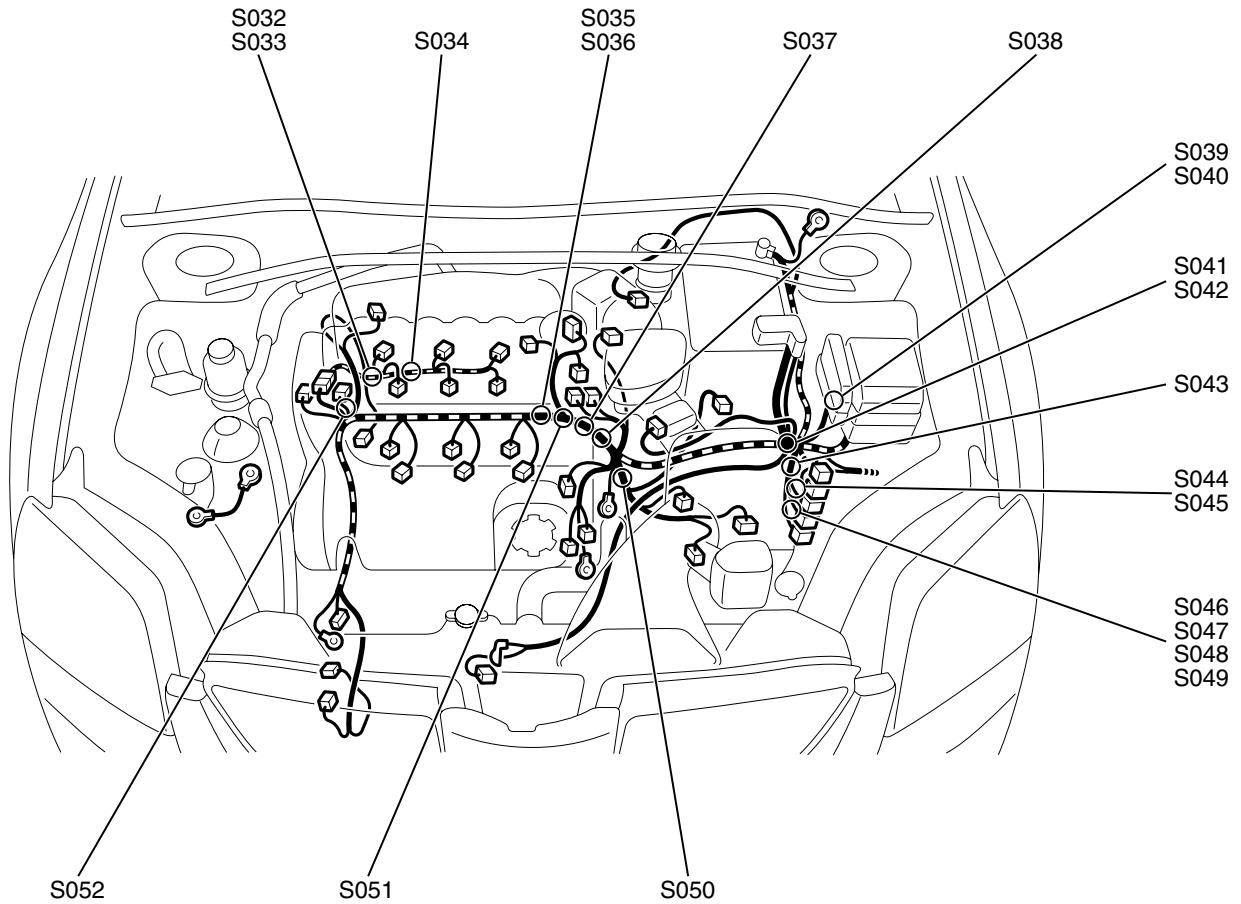
M1802001400566



AC400680AB

**ENGINE AND TRANSAXLE <3.8L ENGINE>**

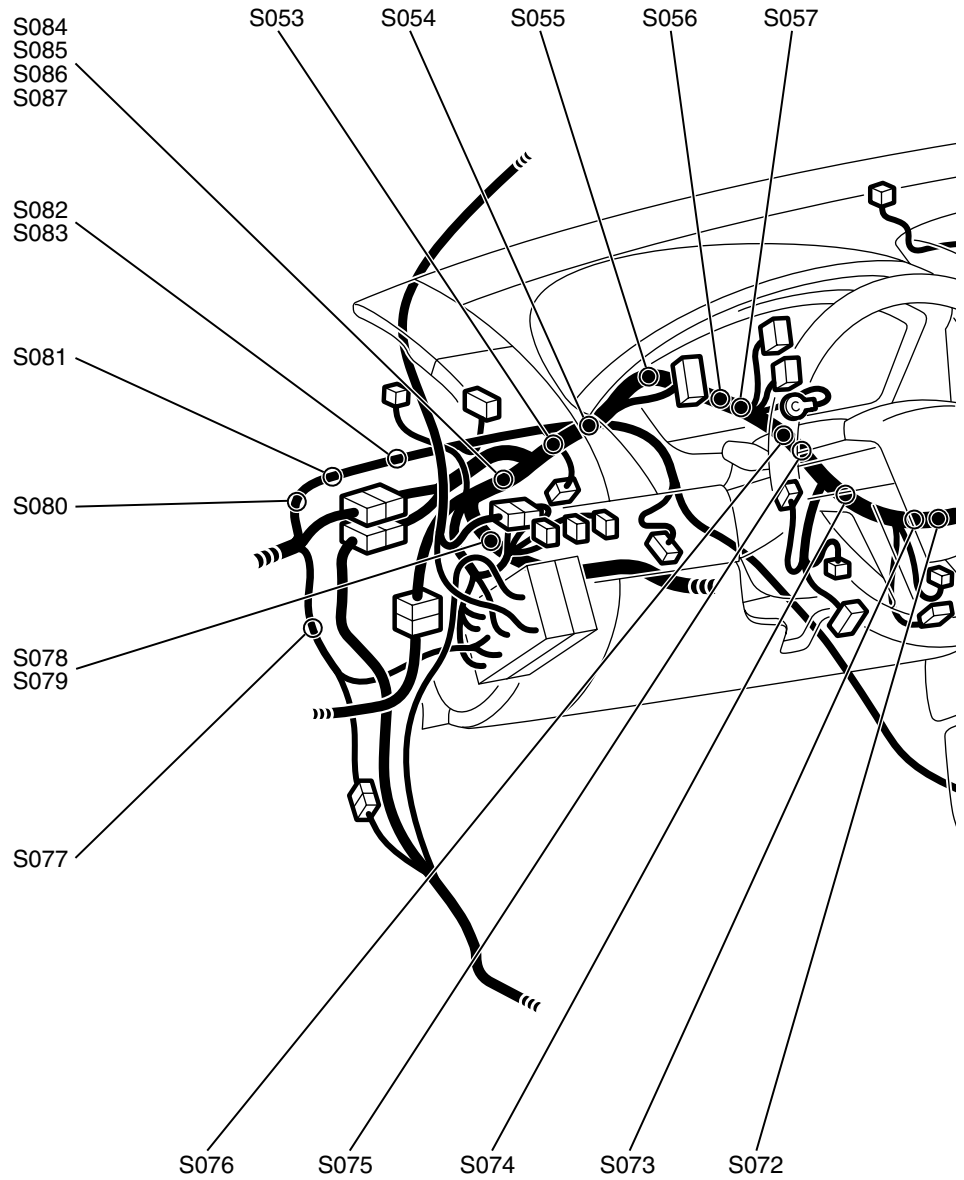
M1802001400577



AC400681AB

DASH PANEL

M1802000300845

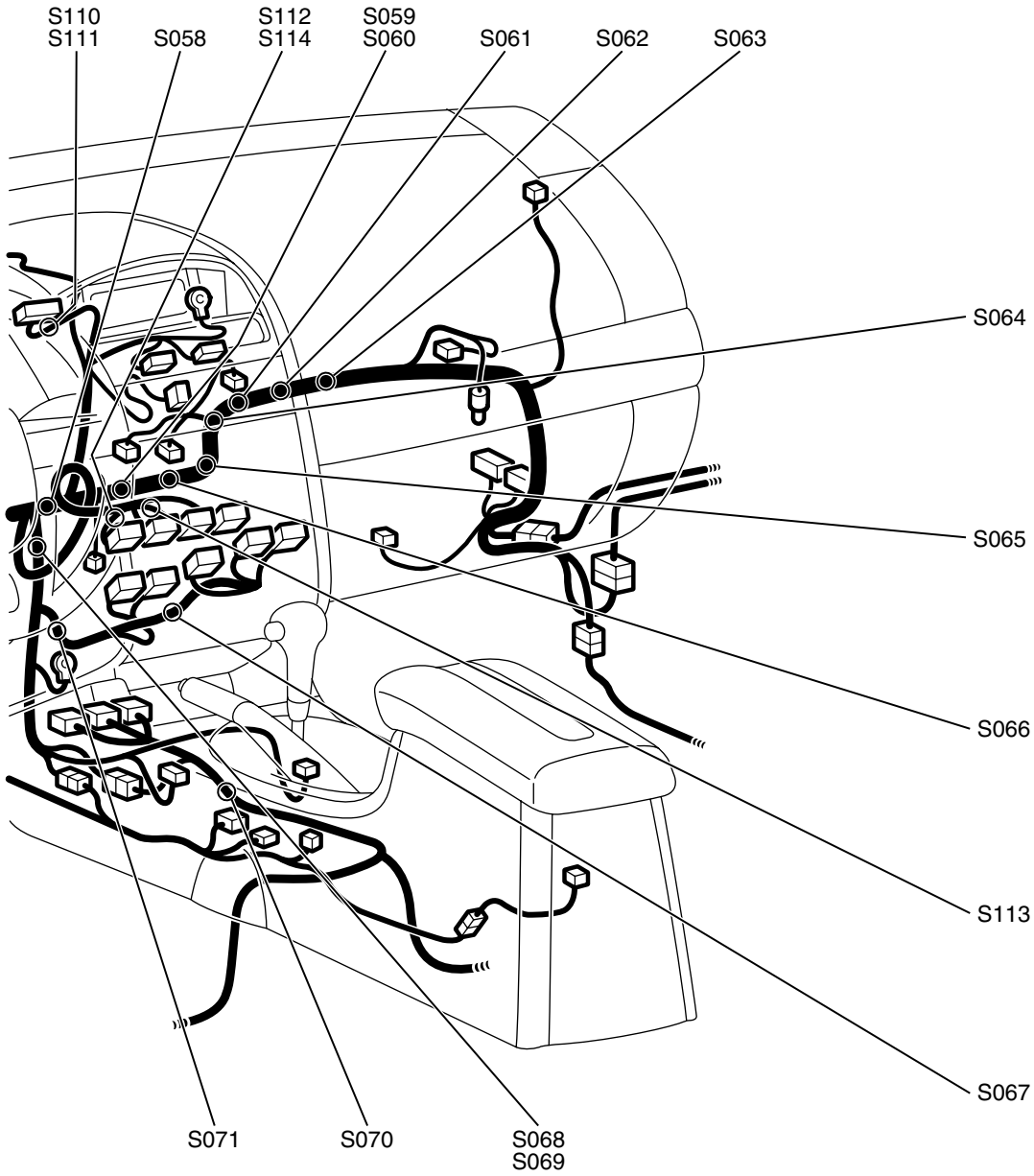


AC305120AC



SPLICE LOCATIONS  
DASH PANEL

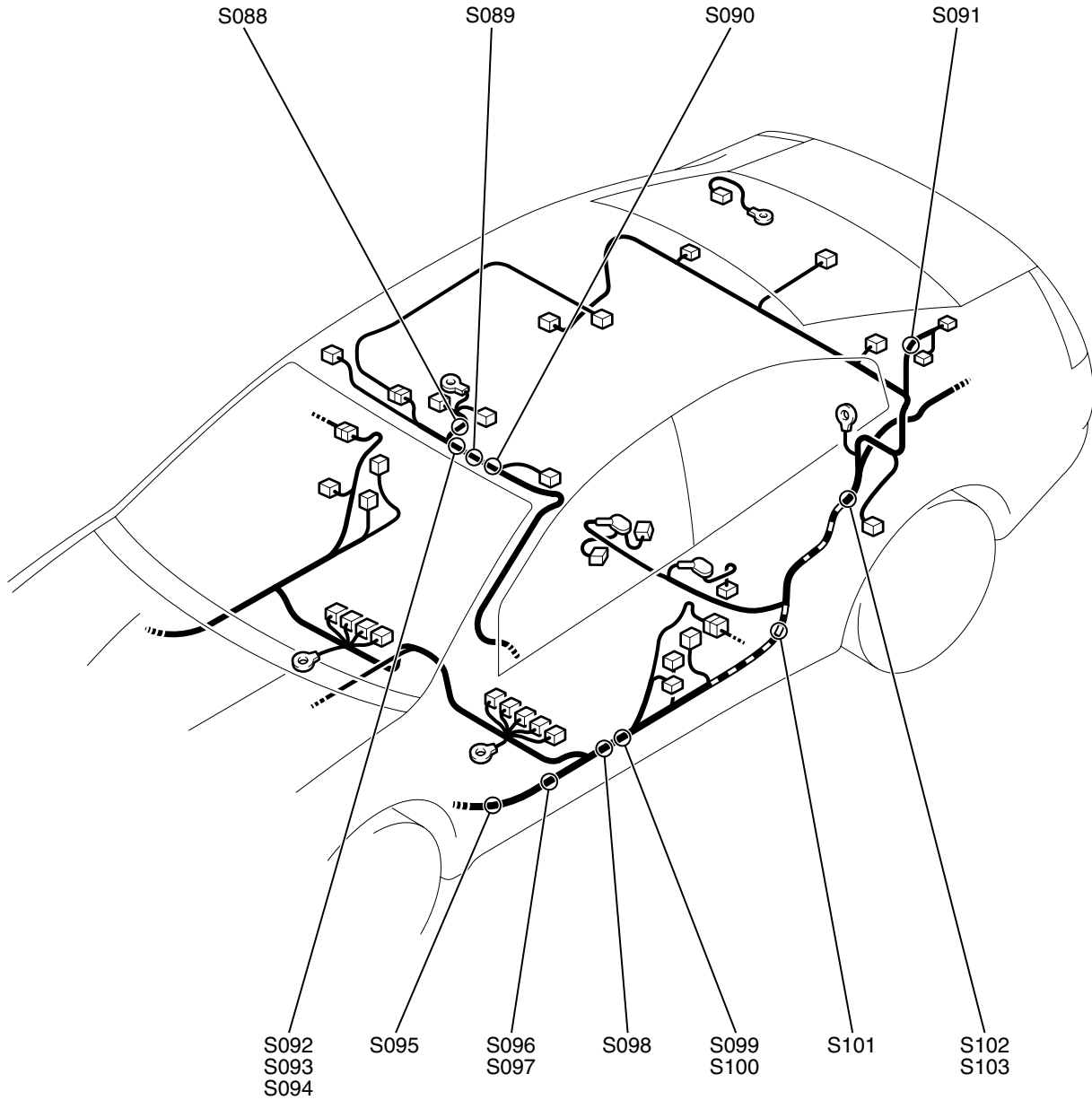
80B-9



AC401202AB

FLOOR AND ROOF

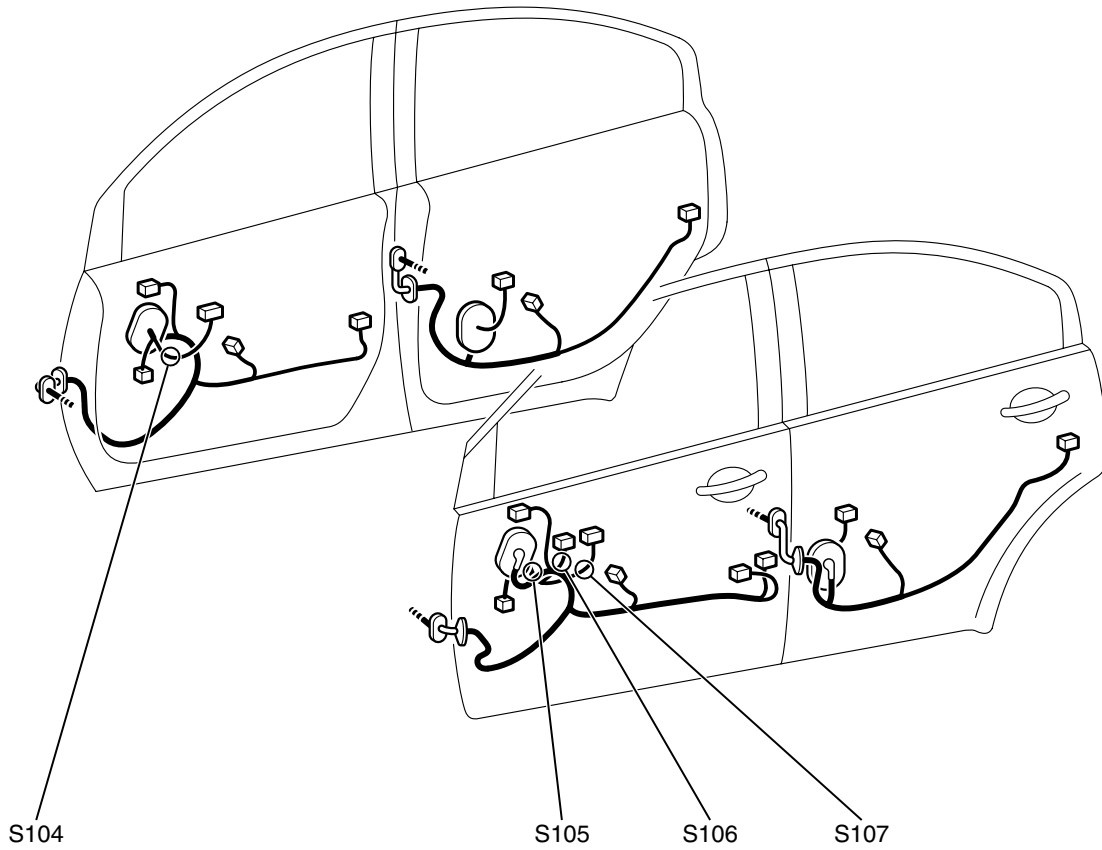
M1802001200681



AC400683AB

DOOR

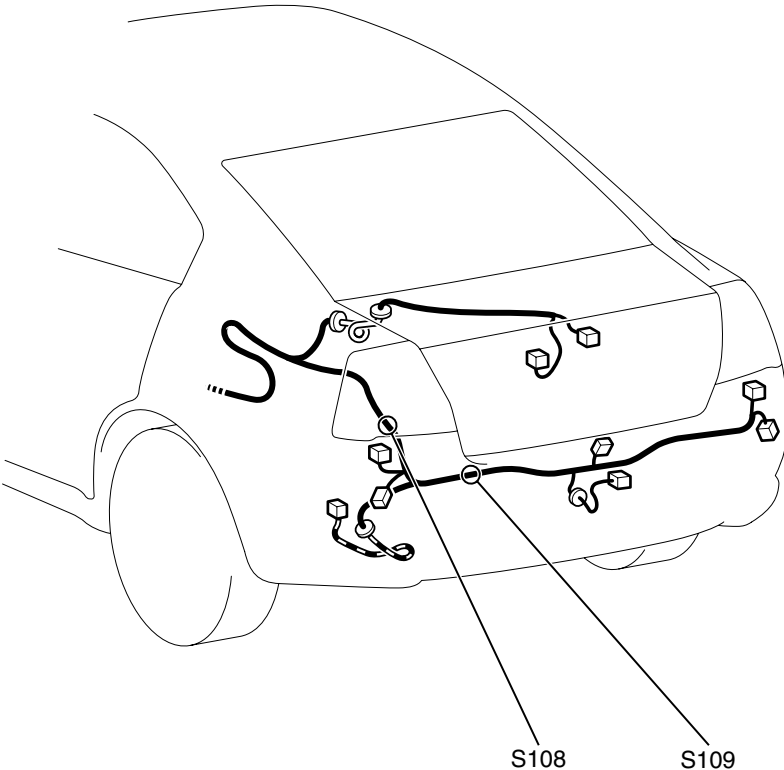
M180200800613



AC305123AC

LUGGAGE COMPARTMENT

M1802000700177



AC305124AC