
POWER PLANT MOUNT

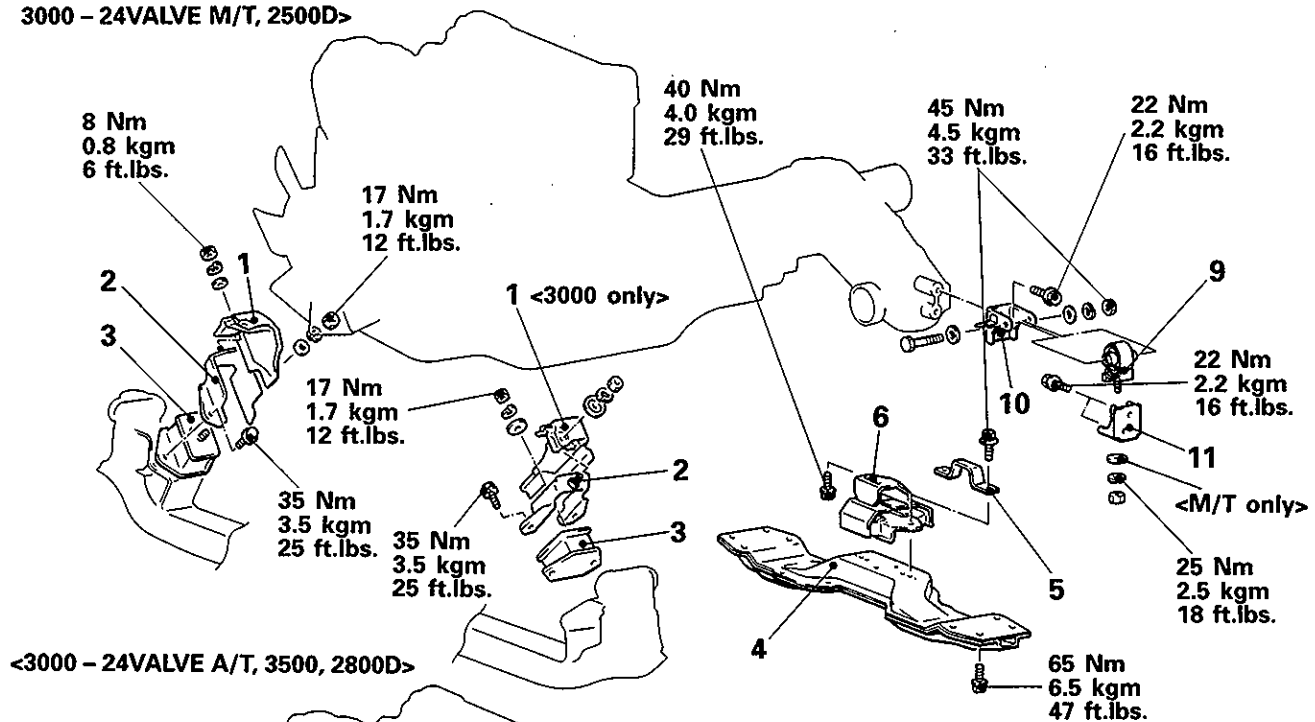
CONTENTS

E32AA--

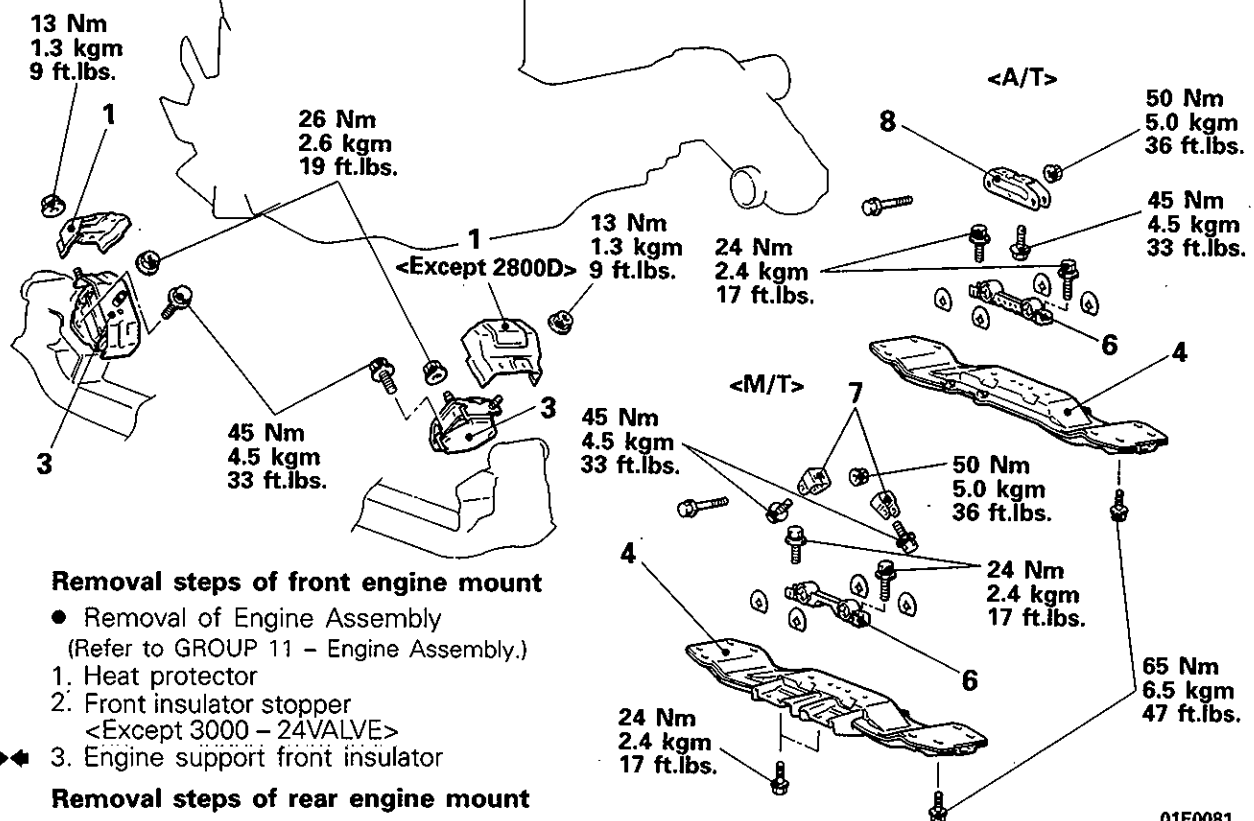
ENGINE MOUNTING	2
FRONT DIFFERENTIAL MOUNTING	4

REMOVAL AND INSTALLATION

**<2400, 3000 – 12VALVE,
3000 – 24VALVE M/T, 2500D>**



<3000 - 24VALVE A/T, 3500, 2800D>



Removal steps of front engine mount

- Removal of Engine Assembly
(Refer to GROUP 11 – Engine Assembly.)

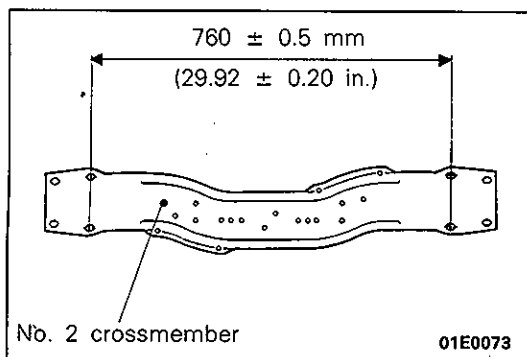
1. Heat protector
2. Front insulator stopper
<Except 3000 - 24VALVE>
3. Engine support front insulator

Removal steps of rear engine mount

4. No. 2 crossmember
5. Stopper
6. Engine support rear insulator
7. Rear engine mount bracket <M/T>
8. Rear engine mount bracket <A/T>

Removal steps of transfer role stopper

9. Transfer support insulator
10. Transfer mounting bracket
11. Transfer support bracket



INSPECTION

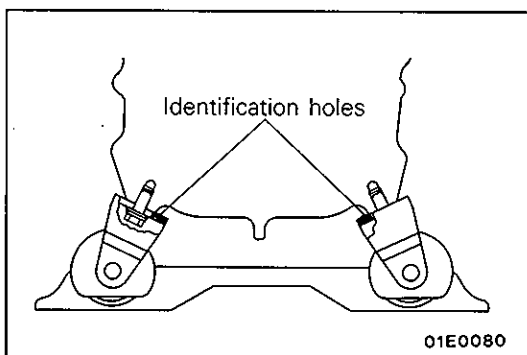
E32TCBC

- Check insulators for cracks, separation or deformation.
- Check the front insulator stoppers for deformations.
- Check insulators for cracks, separation or deformation.
- Check transfer mounting bracket for deformation or corrosion.
- Check transfer support bracket for deformation or corrosion.
- Check No. 2 crossmember for deformation or corrosion.
- Check No. 2 crossmember as illustrated for dimension.

SERVICE POINTS OF INSTALLATION

7. INSTALLATION OF ENGINE REAR MOUNT BRACKET

Install the engine mount bracket so that the identification holes are facing towards the inside of the vehicle.

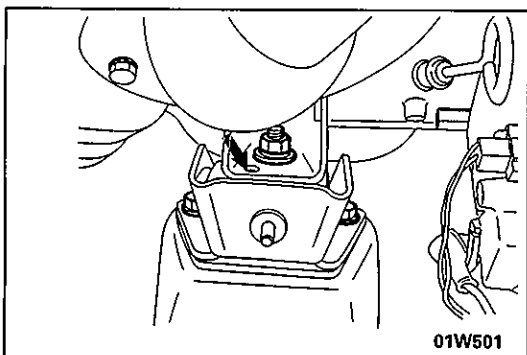


3. INSTALLATION OF ENGINE SUPPORT FRONT INSULATOR

make sure that the locating boss and hole are in alignment.

Caution

Do not distort rubber portions, and never stain rubber portions with fuel or oil.



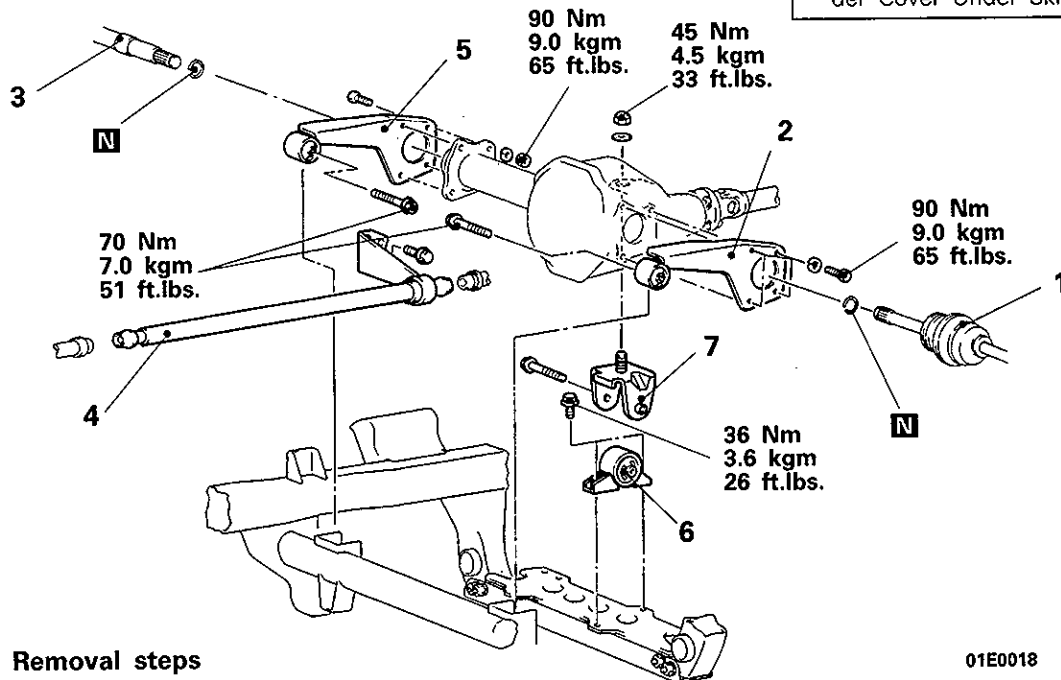
FRONT DIFFERENTIAL MOUNTING

E32LA--

REMOVAL AND INSTALLATION

Pre-removal and Post-installation Operation

- Removal and Installation of the Air Guide Plate <3000, 3500>
- Removal and Installation of the Under Cover Under Skid Plate.



Removal steps

1. Knuckle and drive shaft assembly (Refer to GROUP 26 – Knuckle, Drive Shaft.)
2. Differential mounting bracket (L.H.)
3. Inner shaft (Refer to GROUP 26 – Inner Shaft.)

4. Winch drive shaft (front) <Vehicles with mechanical winch>
5. Differential mounting bracket (R.H.)
6. Differential mounting bracket
7. Differential support bracket

01E0018

SERVICE POINTS OF REMOVAL

E32LBAC

2. REMOVAL OF DIFFERENTIAL MOUNTING BRACKET (L.H.)/5. DIFFERENTIAL MOUNTING BRACKET (R.H.)/6. DIFFERENTIAL MOUNTING BRACKET

While supporting the differential carrier with a jack, remove the differential mounting bracket.

NOTE

Support the differential carrier with a jack until installing the differential mounting bracket.

INSPECTION

E32LCAC

- Check the differential mounting brackets for deformation and damage.
- Check the differential support bracket for deformation and damage.
- Check insulators for cracks, separation or deformation.