
SERVICE BRAKES

CONTENTS

GENERAL	2	WHEEL SPEED SENSOR <ABS> (REAR) ...	3
Outline of Changes	2		
SPECIFICATIONS	2		
General Specifications	2		
Service Specifications	2		

GENERAL

OUTLINE OF CHANGES

- The mounting position of the rear ABS wheel-speed sensor has been changed.
- The ABS wheel-speed sensor has been changed. With this, the resistance value between the sensor terminals has been changed. (The inspection procedure is the same as before.)

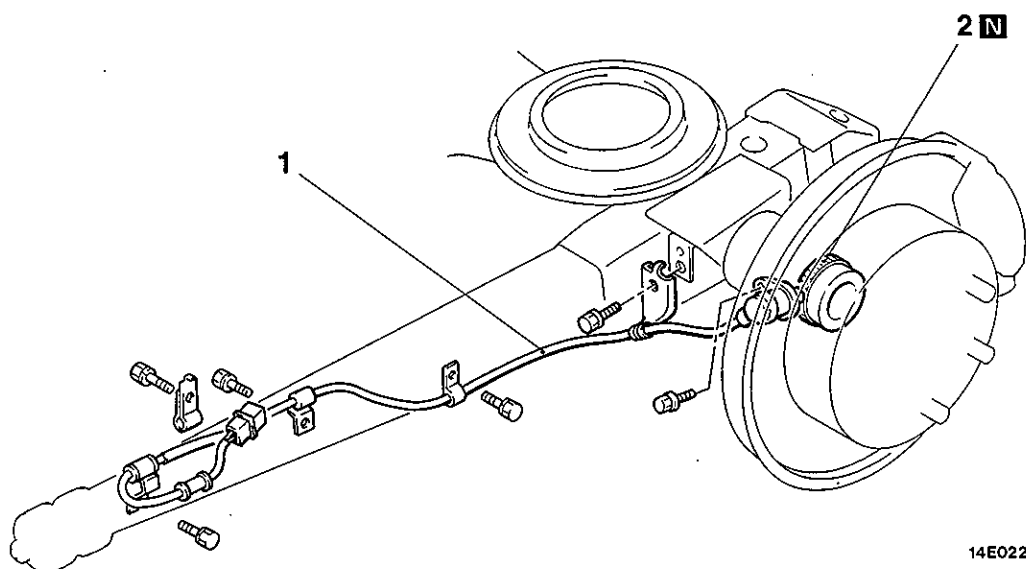
SPECIFICATIONS

GENERAL SPECIFICATIONS

Items	Specifications
ABS	
Rotor teeth	
Front	47
Rear	47
Speed sensor type	Magnet coil type

SERVICE SPECIFICATIONS

Items	Specifications
ABS	
Speed sensor's internal resistance k Ω	
Front	1.4 – 1.8
Rear	1.3 – 1.5

WHEEL SPEED SENSOR <ABS> (REAR)**REMOVAL AND INSTALLATION**

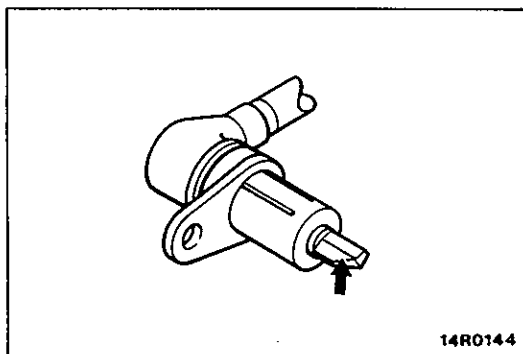
14E0226

Rear speed sensor removal steps

1. Rear speed sensor
2. Rear rotor (Refer to GROUP 27 – Axle shaft.)

NOTE

The clearance between the rotor and wheel-speed sensor can not be adjusted.



14R0144

REMOVAL SERVICE POINT**◀A▶ REAR SPEED SENSOR REMOVAL****Caution**

Be careful when handling the pole piece at the tip of the speed sensor and the toothed edge of the rotor so as not to damage them by striking against other parts.

NOTES