

GROUP 15 INTAKE AND EXHAUST

GENERAL

OUTLINE OF CHANGES

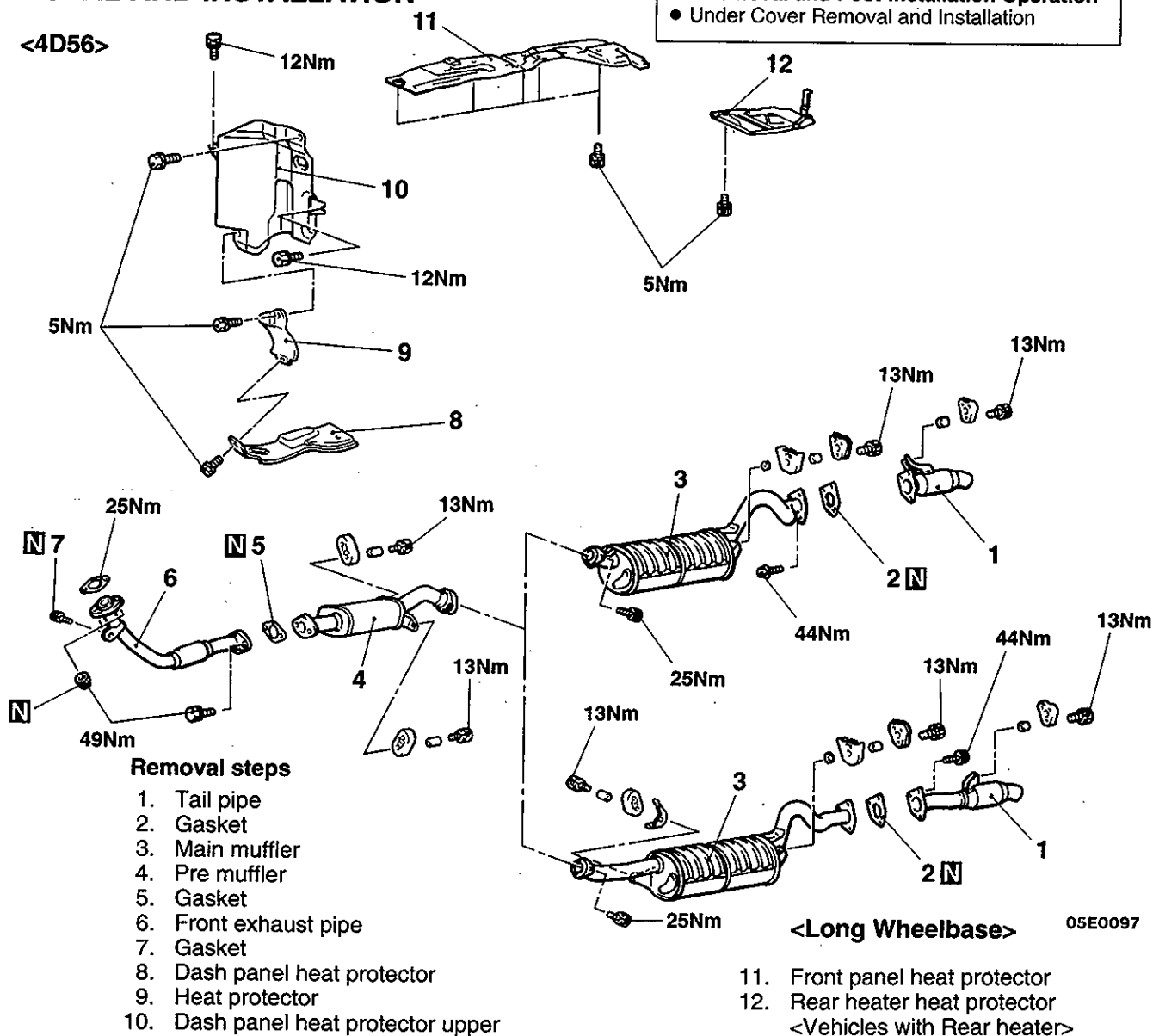
Maintenance service points have been established to correspond to the following changes to the exhaust system.

- The front exhaust pipe has been changed from a spring-type ball joint to a flat joint, and a flexible pipe section has been added in vehicles with 4D56 engine.
- A pre-muffler has been added to the tailpipe in all vehicle models.

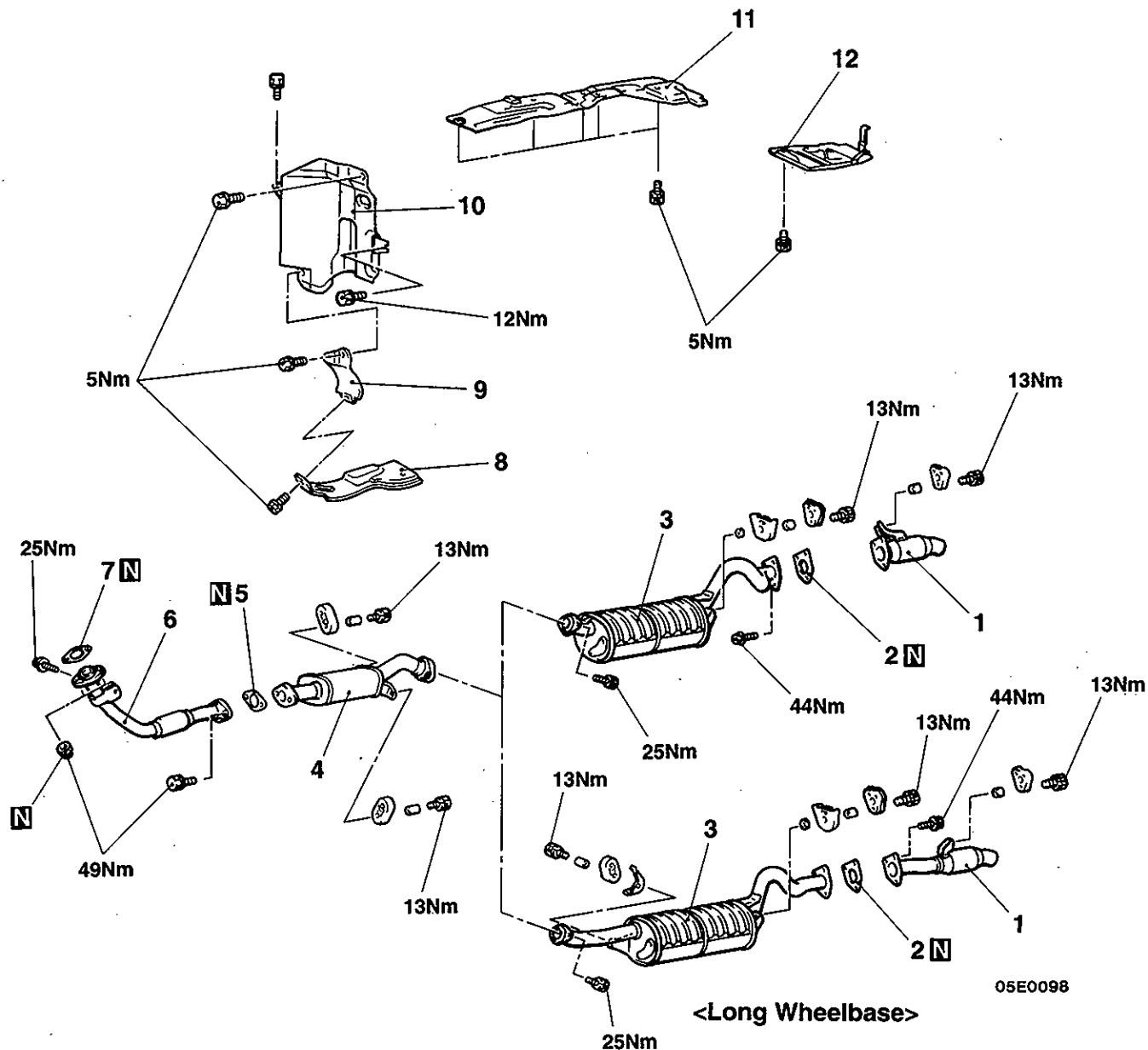
EXHAUST PIPE AND MUFFLER <4D56, 4M40>

REMOVAL AND INSTALLATION

Pre-removal and Post-installation Operation
• Under Cover Removal and Installation



<4M40>



Removal steps

1. Tail pipe
2. Gasket
3. Main muffler
4. Pre muffler
5. Gasket
6. Front exhaust pipe

7. Gasket
8. Dash panel heat protector
9. Heat protector
10. Dash panel heat protector upper
11. Front panel heat protector
12. Rear heater heat protector
<Vehicles with rear heater>

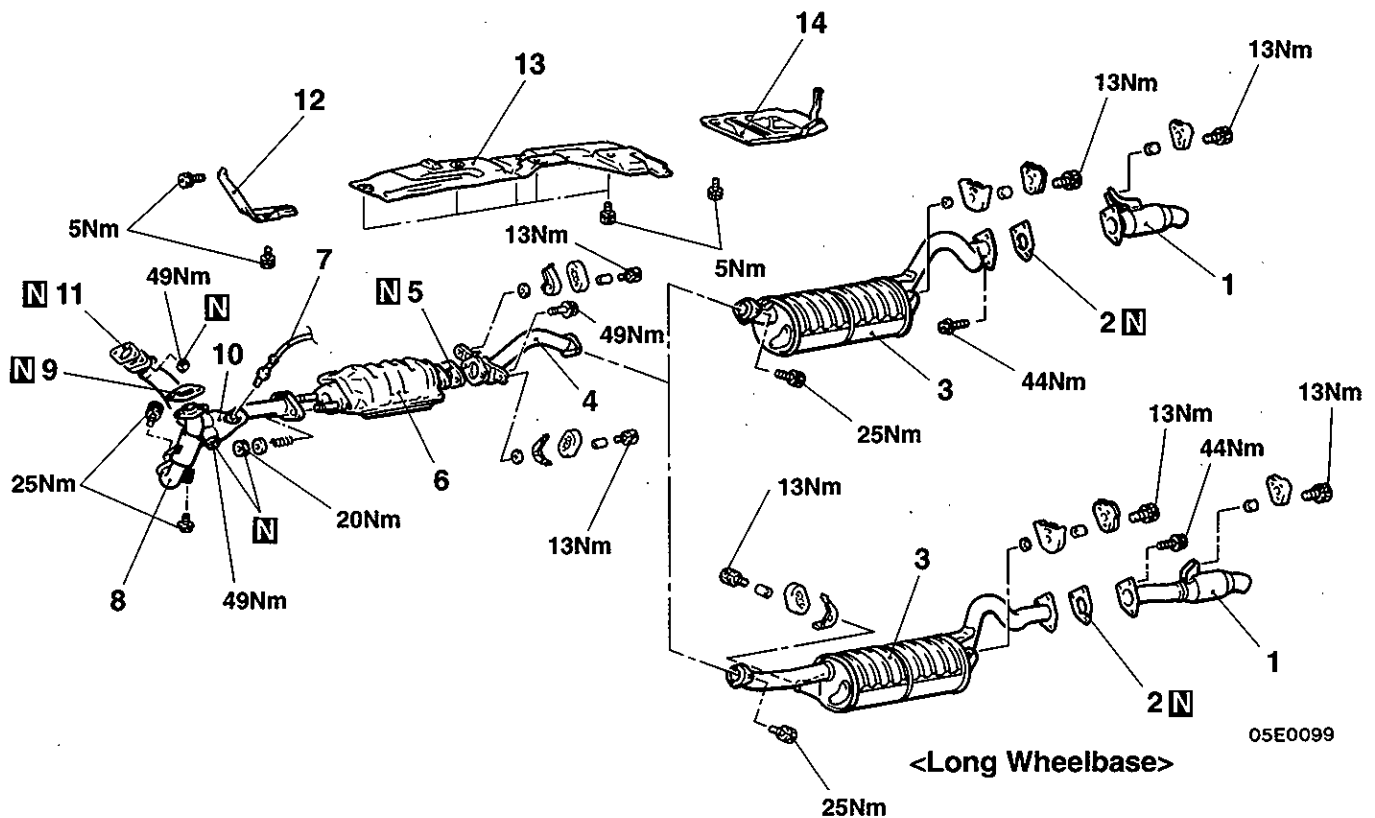
INSPECTION

- Check the mufflers and pipes for corrosion or damage.
- Check the rubber hangers and rubber suspenders for deterioration or damage.
- Check for gas leakage from mufflers and pipes.

EXHAUST PIPE, MUFFLER AND CATALYTIC CONVERTER <6G72 – 24 VALVE, 6G74>

REMOVAL AND INSTALLATION

**Pre-removal and Post-installation
Operation**
• Under Cover Removal and Installation



Removal steps

- | | |
|------------------------|---|
| 1. Tail pipe | 8. Front exhaust pipe (L.H.) |
| 2. Gasket | 9. Gasket |
| 3. Main muffler | 10. Front exhaust pipe (R.H.) |
| 4. Center exhaust pipe | 11. Gasket |
| 5. Gasket | 12. Heat protector |
| 6. Catalytic converter | 13. Front panel heat protector |
| 7. Oxygen sensor | 14. Rear heater heat protector
<Vehicles with rear heater> |

INSPECTION

- Check the mufflers and pipes for corrosion or damage.
- Check the rubber hangers and rubber suspenders for deterioration or damage.
- Check for gas leakage from mufflers and pipes.