
INTAKE AND EXHAUST

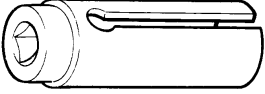
CONTENTS

SERVICE SPECIFICATION	2	EXHAUST MANIFOLD	6
SPECIAL TOOL	2	EXHAUST PIPE AND MAIN MUFFLER	7
AIR CLEANER	3	CATALYTIC CONVERTER	Refer to GROUP 35A
INTAKE MANIFOLD	4		

SERVICE SPECIFICATION

Items	Standard value	Limit
Distortion of the intake manifold installation surface mm	0.15 or less	0.20

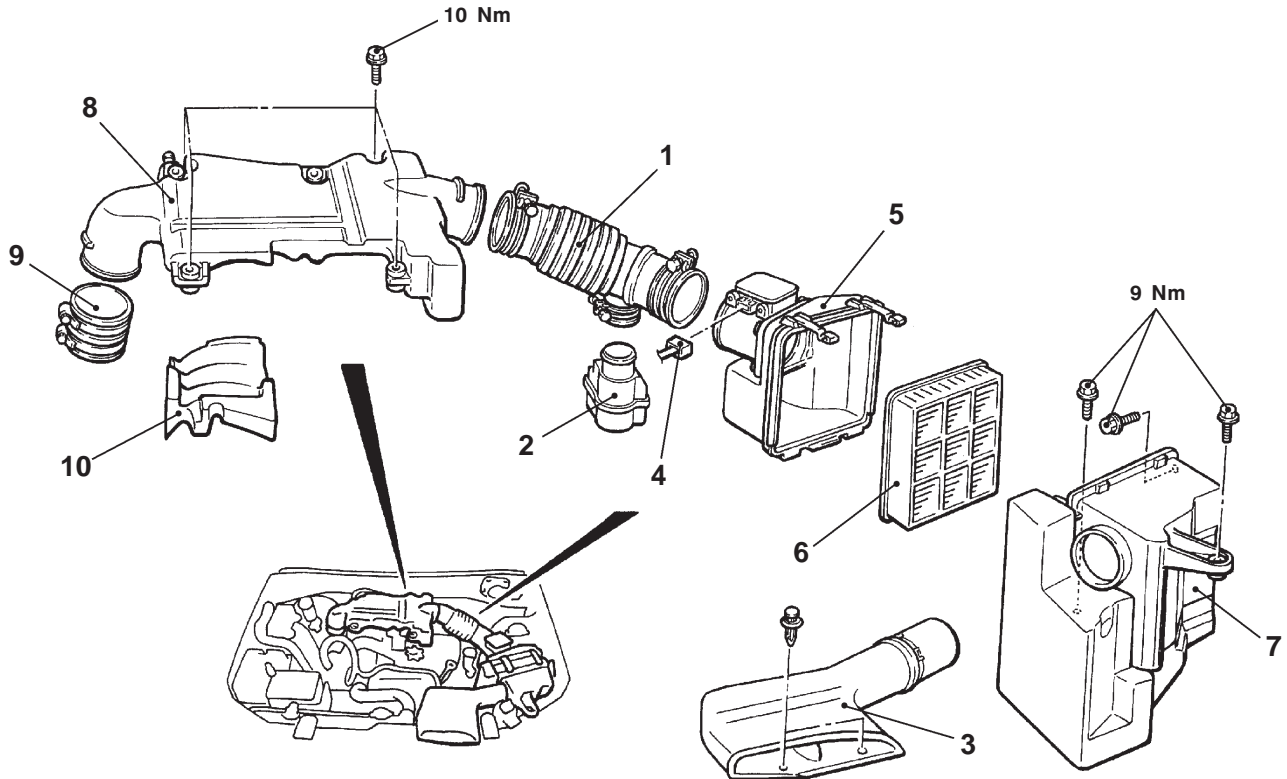
SPECIAL TOOL

Tool	Number	Name	Use
	MD998770	Oxygen sensor wrench	Removal and installation of oxygen sensor

AIR CLEANER

REMOVAL AND INSTALLATION

Pre-removal and Post-installation Operation
Engine Cover Removal and Installation



AW0546AL

Air cleaner removal steps

1. Air intake hose
2. Resonator
3. Air duct
4. Air flow sensor connector connection
5. Air cleaner cover
6. Air cleaner element
7. Air cleaner

Resonance tank removal steps

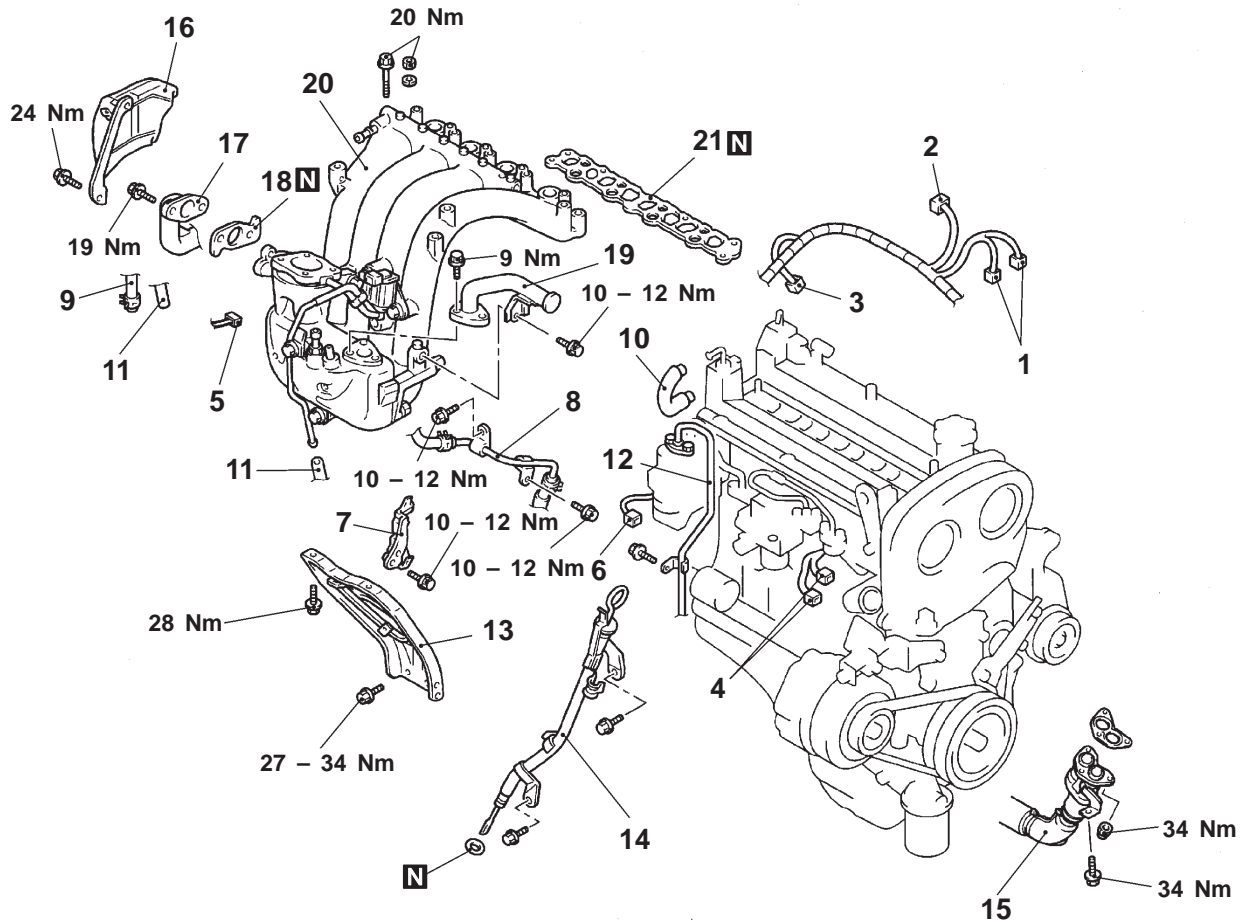
8. Resonance tank
9. Air hose
10. Insulator

INTAKE MANIFOLD

REMOVAL AND INSTALLATION

Pre-removal and Post-installation Operation

- Engine Coolant Draining and Supplying (Refer to GROUP 14 – On-vehicle Service.)
- Engine Cover and Under Cover Removal and Installation
- Resonance Tank Removal and Installation (Refer to P.15-3.)
- Ignition Coil Removal and Installation (Refer to GROUP 16.)
- Throttle Body Removal and Installation (Refer to GROUP 13A.)



AX0083AL

Removal steps

1. Engine coolant temperature sensor connector connection
2. Condenser connector connection
3. Camshaft position sensor connector connection
4. Injector harness connector connection
5. Purge control solenoid connector connection
6. EGR valve connector connection
7. Harness connector bracket
8. Water hose and pipe
9. Brake booster vacuum hose
10. PCV hose connection
11. Vacuum hose connection
12. Fuel hose clamp
13. Intake manifold stay
14. A/T fluid level gauge guide
15. Front exhaust pipe connection
16. Fuel pump protector
17. EGR valve support connection
18. Gasket
19. Branch tube
20. Intake manifold assembly
21. Intake manifold gasket



REMOVAL SERVICE POINT**◀A▶ FUEL PUMP PROTECTOR REMOVAL**

Lift up the transmission with a jack to create clearance between the engine and the front deck, and remove the fuel pump protector.

INSPECTION

Check the following points; replace the part if a problem is found.

INTAKE MANIFOLD CHECK

1. Check for damage or cracking of any part.
2. Using a straight edge and thickness gauge, check for distortion of the cylinder head installation surface.

Standard value: 0.15 mm or less

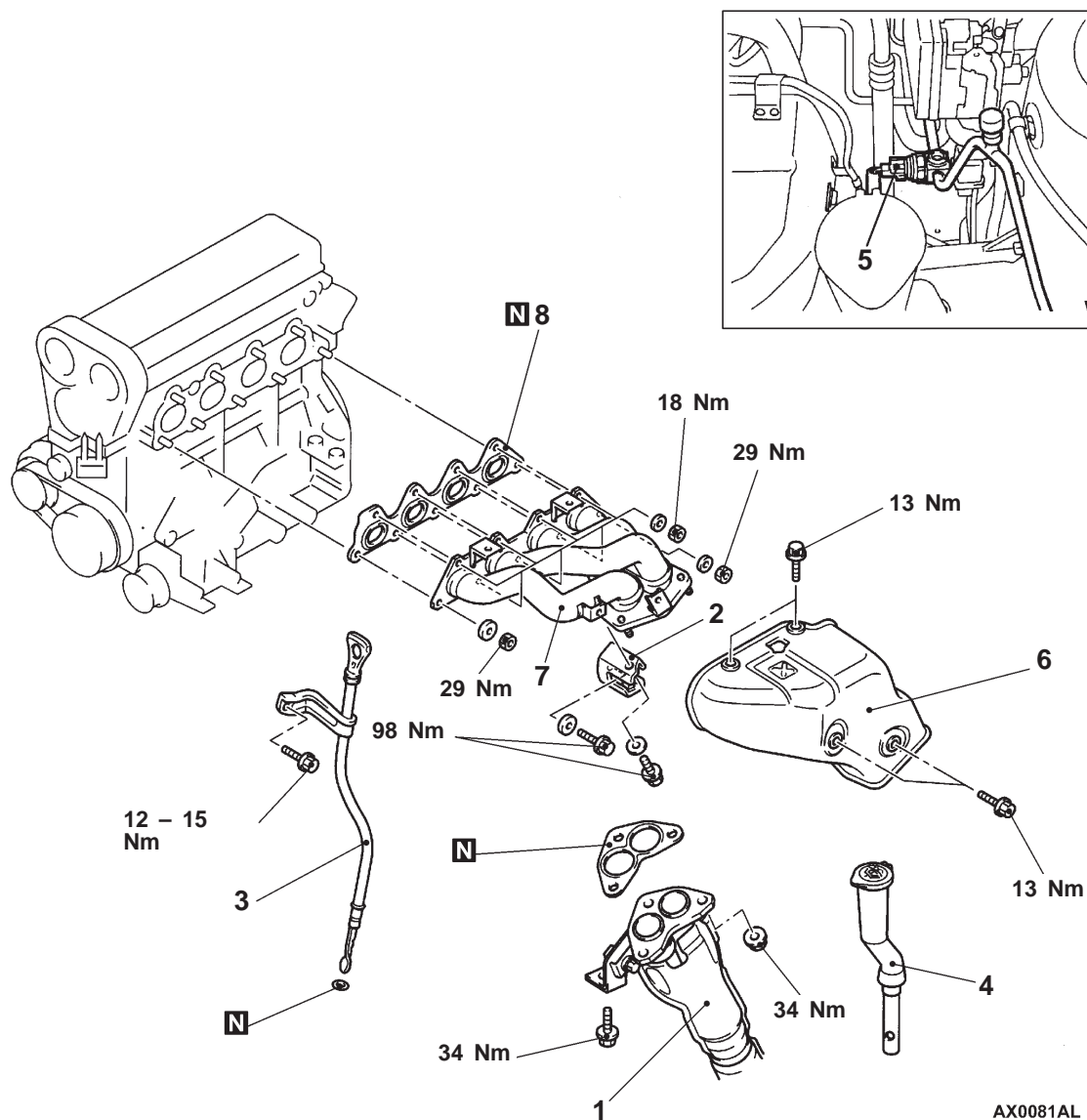
Limit: 0.20 mm

EXHAUST MANIFOLD

REMOVAL AND INSTALLATION

Pre-removal and Post-installation Operation

- Engine Cover and Under Cover Removal and Installation
- Air Cleaner Removal and Installation (Refer to P.15-3.)

**Removal steps**

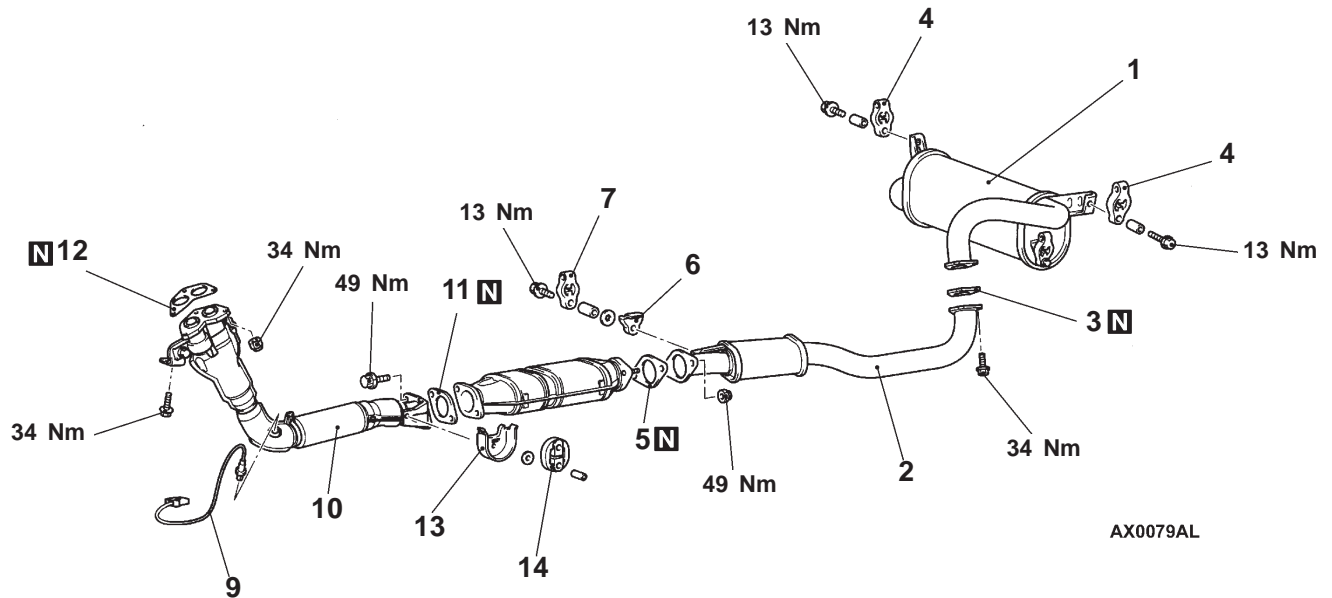
1. Front exhaust pipe connection
2. Exhaust manifold bracket
3. Engine oil level gauge guide
4. Washer tank filler tube
5. A/C pressure switch connector connection

6. Exhaust manifold cover
7. Exhaust manifold
8. Exhaust manifold gasket

EXHAUST PIPE AND MAIN MUFFLER

REMOVAL AND INSTALLATION

Pre-removal and Post-installation Operation
Engine Cover and Under Cover Removal and Installation



Main muffler removal steps

1. Main muffler
3. Gasket
4. Hanger

Center exhaust pipe removal steps

2. Center exhaust pipe
3. Gasket
5. Gasket
6. Protector
7. Hanger

Pre-muffler removal steps

8. Pre-muffler
11. Gasket

Center exhaust pipe removal steps

9. Oxygen sensor
10. Front exhaust pipe
11. Gasket
12. Gasket
13. Heat protector
14. Hanger

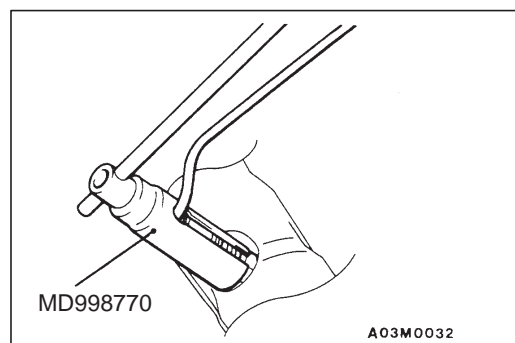


REMOVAL SERVICE POINT

◀A▶ OXYGEN SENSOR REMOVAL

INSTALLATION SERVICE POINT

▶A◀ OXYGEN SENSOR INSTALLATION



NOTES