

## GENERAL

### OUTLINE OF CHANGE

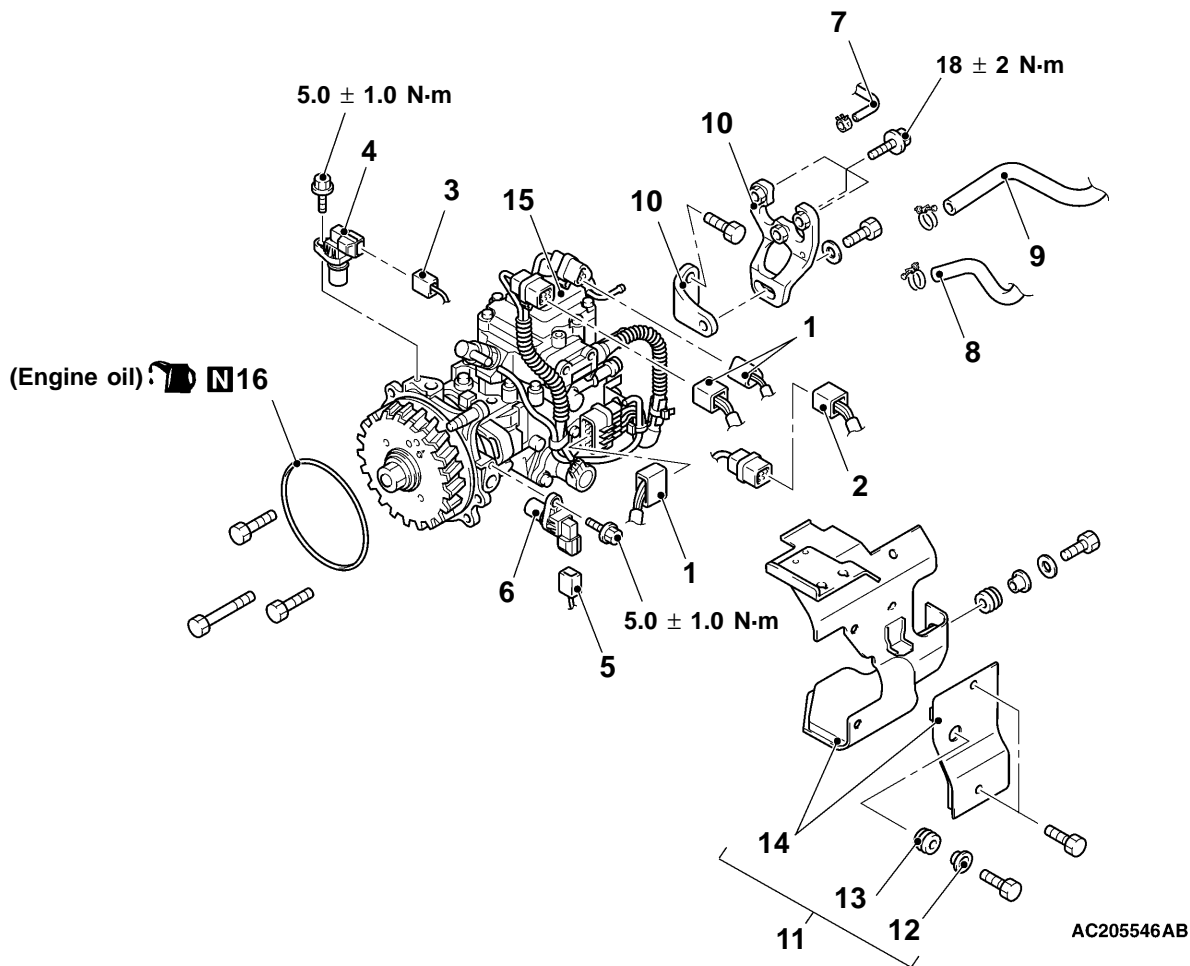
Due to the changes on the injection pump cover, the service procedure of the injection pump has been established.

## INJECTION PUMP

### REMOVAL AND INSTALLATION

#### Pre-removal and Post-installation Operations

- Engine Cover Removal and Installation
- Battery and Battery Tray Removal and Installation
- Injection Pipe Removal and Installation
- Air Cleaner Removal and Installation
- Intercooler Air Hose Removal and Installation
- Glow Plug Relay and Bracket Assembly Removal and Installation
- Power Steering Oil Pump Removal and Installation
- Fuel Filter Removal and Installation
- Intake Manifold Cover Removal and Installation (Refer to GROUP 15.)

**Removal steps**

1. Injection pump connectors
2. Engine speed sensor connector
3. Engine speed sensor 1 connector
4. Engine speed sensor 1
5. Engine speed sensor 2 connector
6. Engine speed sensor 2
7. Fuel return hose
8. Fuel return hose



9. Fuel main hose
10. Injection pump stays
11. Injection pump cover assembly
12. Insulator collars
13. Insulators
14. Injection pump covers
15. Injection pump assembly
16. O-ring

**NOTE**

The removal and installation service points are the same as before.