

## GENERAL

### OUTLINE OF CHANGE

Service procedures have been established due to the changes on the splash shield.

## FENDER

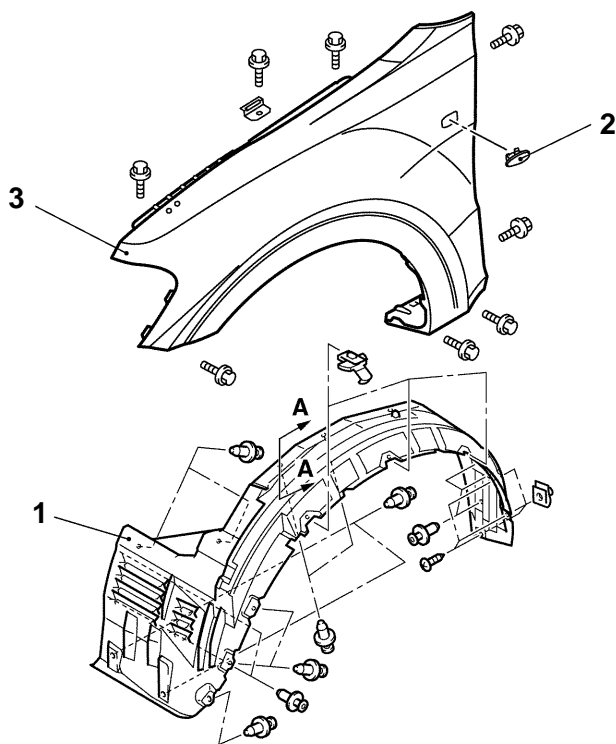
### REMOVAL AND INSTALLATION

#### Caution: SRS

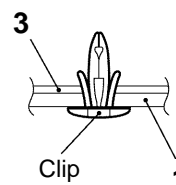
Do not strike the front impact sensor when removing or installing the fender.

#### Pre-removal and Post-installation Operation

- Front Bumper Removal and Installation  
(Refer to GROUP 51.)
- Front Wheel Cut Moulding Removal and Installation  
(Refer to GROUP 51.)
- Front Mudguard Removal and Installation  
(Refer to GROUP 51.)



Section A – A



AC204917

#### Removal steps



1. Splash shield
2. Side turn signal lamp
3. Fender

#### NOTE

For service points, refer to '01 PAJERO Workshop Manual, GROUP 42 – Fender.