

FRONT AXLE

CONTENTS

GENERAL	2	DRIVE SHAFT	2
Outline of Change	2		



GENERAL

OUTLINE OF CHANGE

- The following service procedures have been established in line with the addition of 2000 models and 2400 models.
 - DRIVE SHAFT REMOVAL AND INSTALLATION
 - DRIVE SHAFT DISASSEMBLY AND REASSEMBLY

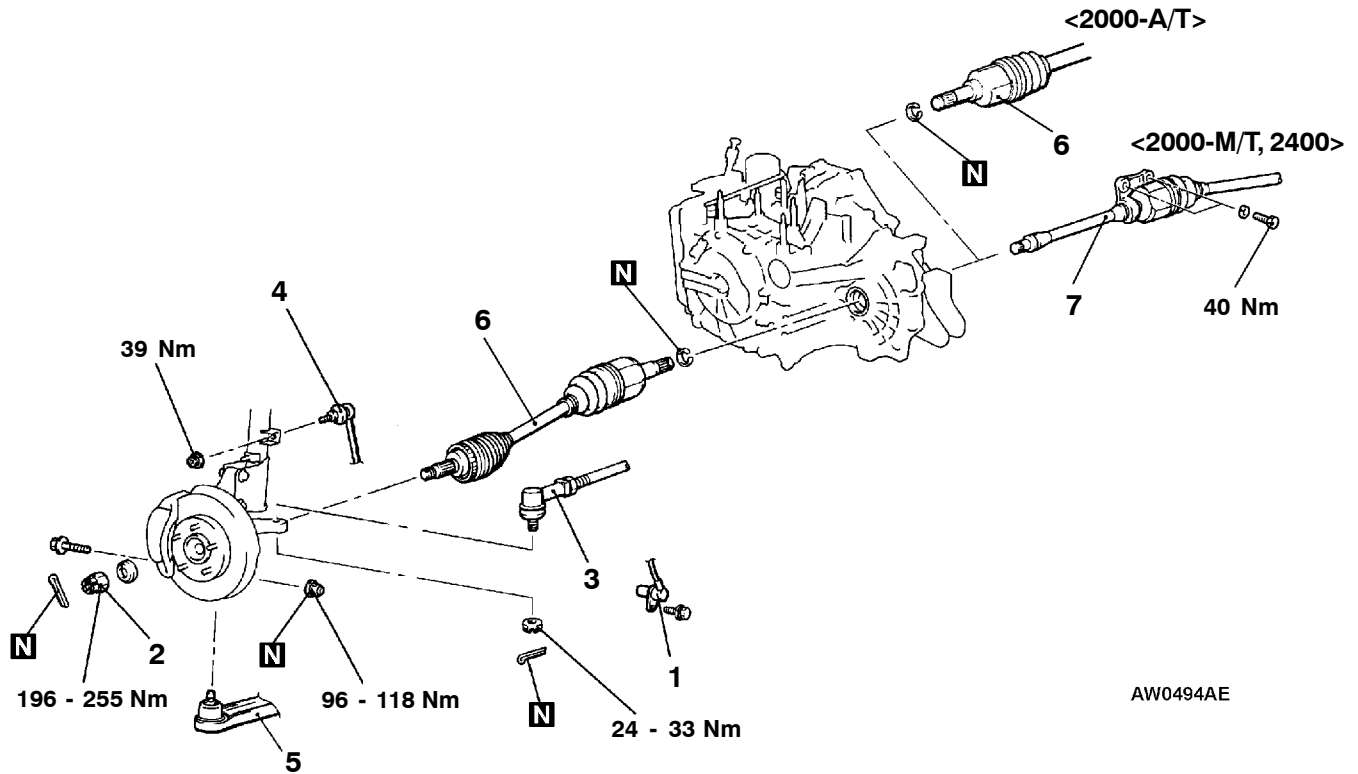
DRIVE SHAFT

REMOVAL AND INSTALLATION

Caution

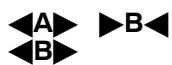
On the vehicles with ABS, when the drive shaft is removed or installed, be careful not to interfere with the ABS rotor installed to the B.J. outer race to prevent the ABS rotor from damage.

Post-installation Operation
 Check the Dust Cover for Cracks or Damage by Pushing it with Finger.

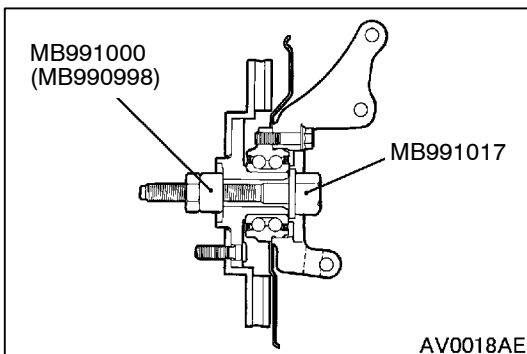
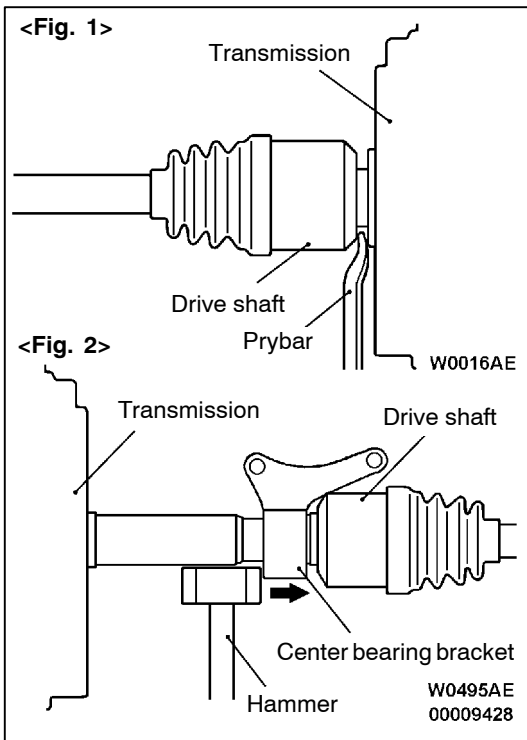
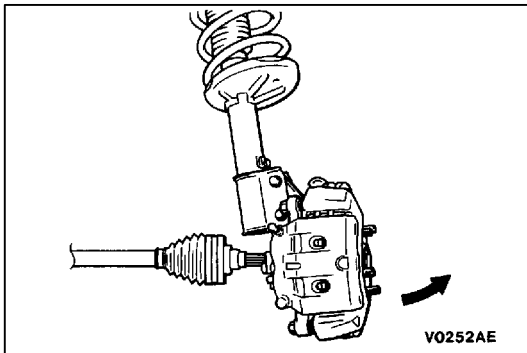
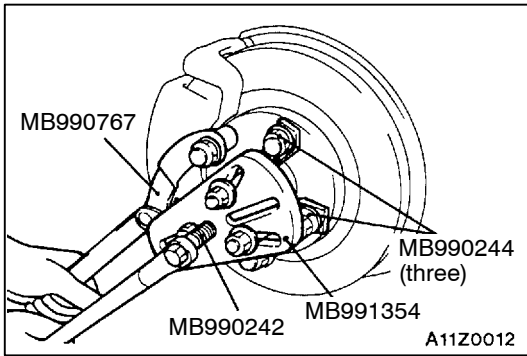


Removal steps

- Front wheel speed sensor
 <Vehicles with ABS>
- Drive shaft nut
- Tie rod end connection
- Stabilizer link connection



- Lower arm assembly connection
- Drive shaft
- Drive shaft and inner shaft assembly



REMOVAL SERVICE POINTS

Items other than those given below are the same as before.

◀C▶ DRIVE SHAFT/DRIVE SHAFT AND INNER SHAFT ASSEMBLY REMOVAL

1. Use the special tool to push out the drive shafts from the hub.
2. Withdraw the drive shaft from the hub by pulling the bottom of the brake disc towards you.
3. Remove the drive shaft or the drive shaft and inner shaft assembly from the transmission by the following procedure:

2000-A/T, 2000-M/T (LH), 2400 (LH)	Fig. 1
2000-M/T (RH), 2400 (RH)	Fig. 2

<Fig. 1>

Insert a pry bar between the drive shaft and the transmission case, and then pry off the drive shaft.

<Fig. 2>

Tap the center bearing bracket with a hammer to remove the drive shaft.

Caution

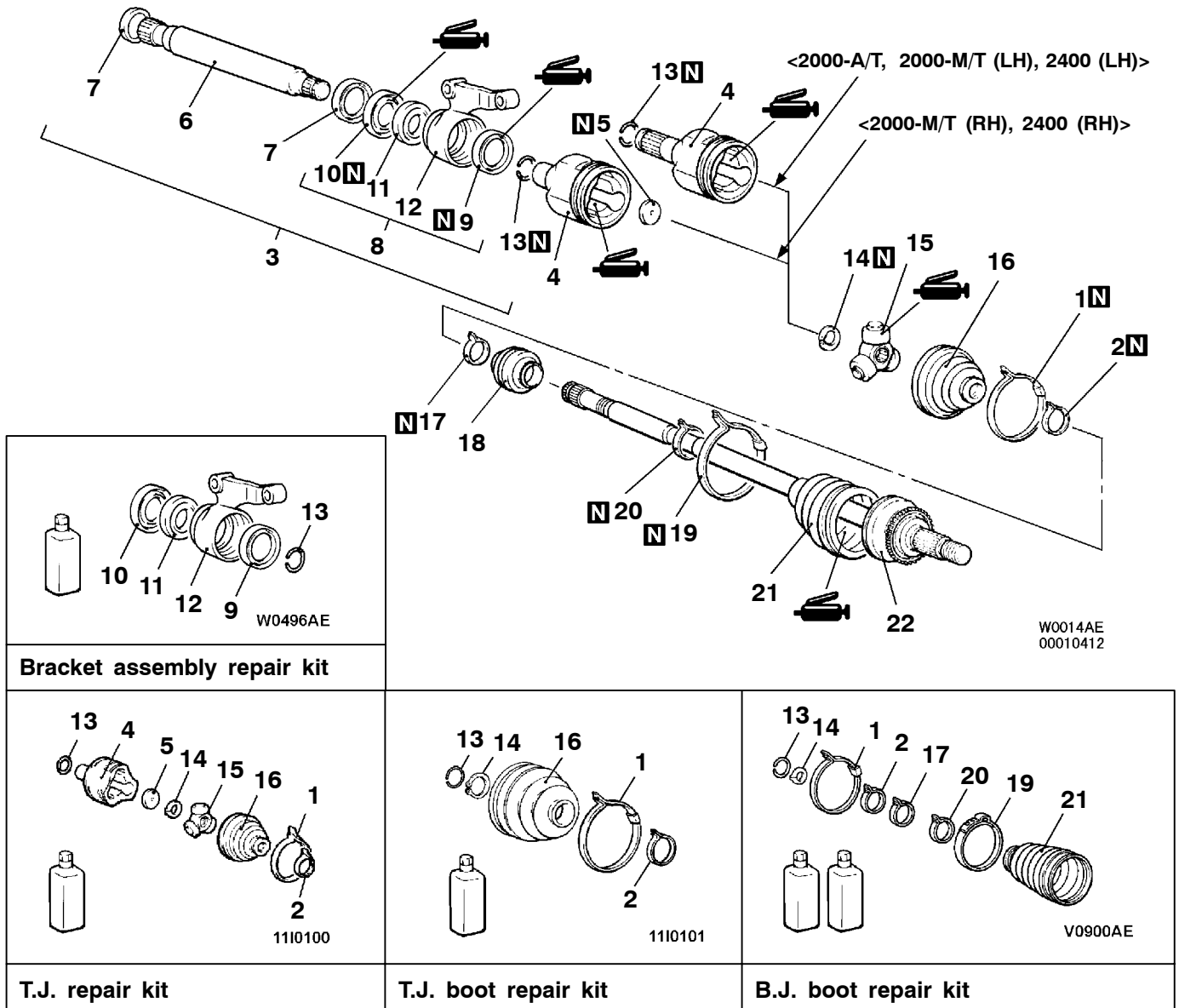
- (1) Above-mentioned procedure must be observed. Pulling the B.J. assembly to remove the drive shaft or drive shaft and inner shaft assembly will damage the T.J. assembly.
- (2) Take care that the transmission oil seal will not be damaged by the drive shaft spline.

- (3) Do not apply the vehicle weight to the wheel bearing while loosening the drive shaft nut, as the wheel bearing will be damaged. If, however, the vehicle weight must be applied to the bearing (because of moving the vehicle), temporarily secure the wheel bearing by using the special tools.

DISASSEMBLY AND REASSEMBLY

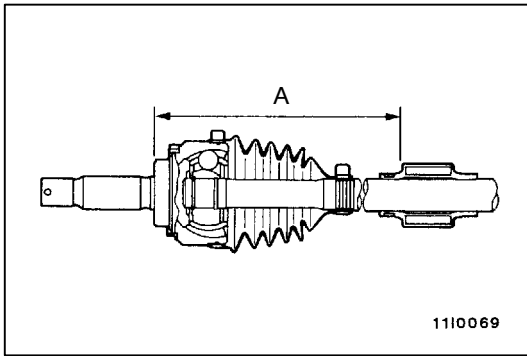
Caution

On the vehicles with ABS, when the drive shaft is disassembled or reassembled, be careful not to interfere with the ABS rotor installed to the B.J. outer race to prevent the rotor from damage.



Disassembly steps

- | | |
|--|--|
| <p> ▲G▲ 1. T.J. boot band (large)
 ▲G▲ 2. T.J. boot band (small)
 ▲F▲ 3. T.J. case and inner shaft assembly
 ▲A▲ ▲B▲ 4. T.J. case
 5. Seal plate
 ▲B▲ ▲E▲ 6. Inner shaft
 7. Dust cover
 8. Bracket assembly
 ▲D▲ 9. Dust seal outer
 ▲D▲ 10. Dust seal inner
 ▲C▲ ▲C▲ 11. Center bearing
 12. Center bearing bracket </p> | <p> ▲A▲ ▲B▲ 13. Circlip
 ▲D▲ 14. Snap ring
 ▲A▲ 15. Spider assembly
 ▲A▲ 16. T.J. boot
 17. Damper band <some models>
 18. Dynamic damper <some models>
 19. B.J. boot band (large)
 (Refer to P.26-6.)
 20. B.J. boot band (small)
 (Refer to P.26-6.)
 21. B.J. boot (Refer to P.26-6.)
 22. B.J. assembly (Refer to P.26-6.) </p> |
|--|--|



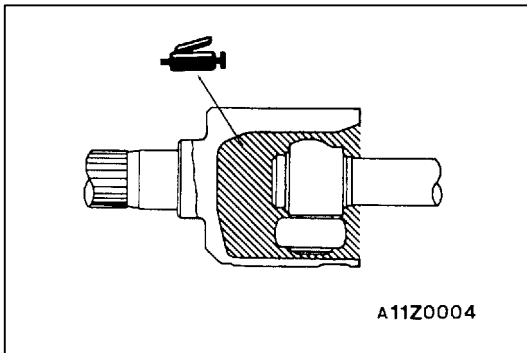
REASSEMBLY SERVICE POINTS

The following drive shaft reassembly procedures have been established. Items other than those given below are the same as before.

►A◄ DYNAMIC DAMPER/DAMPER BAND/T.J. BOOT INSTALLATION

Install the dynamic damper in the position shown in the illustration.

Items		A	
		L.H.	R.H.
2000	M/T	215 mm	-
	A/T	215 mm	395 mm
2400		215 mm	-



►B◄ SPIDER ASSEMBLY/T.J. CASE INSTALLATION

After applying the specified grease to the T.J. case, insert the drive shaft and apply grease one more time.

Specified grease: Repair kit grease

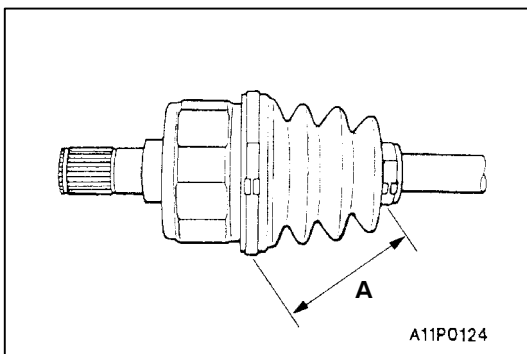
Amount to use:
 <2000> 110 g
 <2400> 140 g

NOTE

The grease in the repair kit should be divided in half for use, respectively, at the joint and inside the boot.

Caution

The drive shaft joint uses special grease. Do not mix old and new or different types of grease.



►G◄ T.J. BOOT BAND (SMALL)/T.J. BOOT BAND (LARGE) INSTALLATION

Set the T.J. boot bands at the specified distance in order to adjust the amount of air inside the T.J. boot, and then tighten the T.J. boot bands securely.

Standard value (A):
 <2000> 82 ± 3 mm
 <2400> 81 ± 3 mm

B.J. BOOT (RESIN BOOT) REPLACEMENT

The following B.J. boot (resin boot) replacement procedures have been established. Items other than those given below are the same as before.

Fill the inside of the B.J. boot with the specified amount of the specified grease.

Specified grease: Repair kit grease

Amount to use:

<2000, 2400-A/T> 125 g

<2400-M/T> 145 g

Caution

The drive shaft joint uses special grease. Do not mix old and new or different types of grease.