
STEERING

CONTENTS

GENERAL	2	POWER STEERING OIL PUMP	3
Outline of Changes	2	POWER STEERING HOSES	6
ON-VEHICLE SERVICE	2		
Oil Pump Pressure Test	2		
Power Steering Oil Pressure Switch Check	2		



GENERAL

OUTLINE OF CHANGES

- The following procedures have been changed to correspond to the modified oil pump.
 - (1) Oil pump pressure test
 - (2) Power steering oil pressure switch check
 - (3) Power steering oil pump removal and installation
 - (4) Power steering oil pump disassembly and reassembly
 - (5) Power steering hose removal and installation

ON-VEHICLE SERVICE

OIL PUMP PRESSURE TEST

The standard value has been changed as follows. The other inspection procedures are the same as before.

Standard value:

Oil pump relief pressure: 9.3 – 10.0 MPa

Pressure under no load: 0.2 – 0.7 MPa

**Steering gear retaining fluid pressure:
9.3 – 10.0 MPa**

POWER STEERING OIL PRESSURE SWITCH CHECK

The following standard value ranges have been established. Service procedures are the same as before.

Standard value:

OFF → ON: 1.5 - 2.0 MPa

ON → OFF: 0.7 - 2.0 MPa

POWER STEERING OIL PUMP

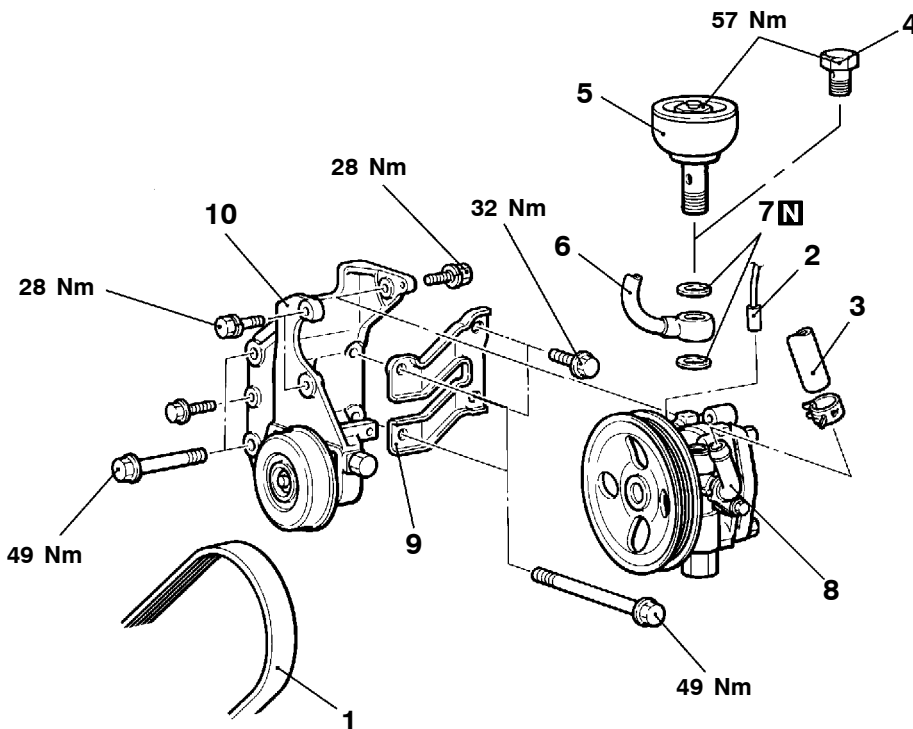
REMOVAL AND INSTALLATION

Pre-removal Operation

Power Steering Fluid Draining

Post-installation Operation

- Power Steering Fluid Supplying
- Drive Belt Tension Adjusting
- Power Steering Fluid Line Bleeding
- Oil Pump Pressure Check (Refer to P.37A-2.)



BV0201AE

Removal steps

- | | |
|-------------------------------------------------------------------------------------------------------------------------------------------------------------------------------------------------------------------------------------------------------------|---------------------------------------------------------------------------------------------------------------------------------------------------|
| <ol style="list-style-type: none"> 1. Drive belt 2. Pressure switch connector 3. Suction hose 4. Eye bolt <2000> 5. Accumulator <2400> 6. Pressure hose assembly 7. Gasket | <ol style="list-style-type: none"> 8. Oil pump assembly 9. Power steering pump bracket stay 10. Oil pump bracket |
|-------------------------------------------------------------------------------------------------------------------------------------------------------------------------------------------------------------------------------------------------------------|---------------------------------------------------------------------------------------------------------------------------------------------------|

NOTE

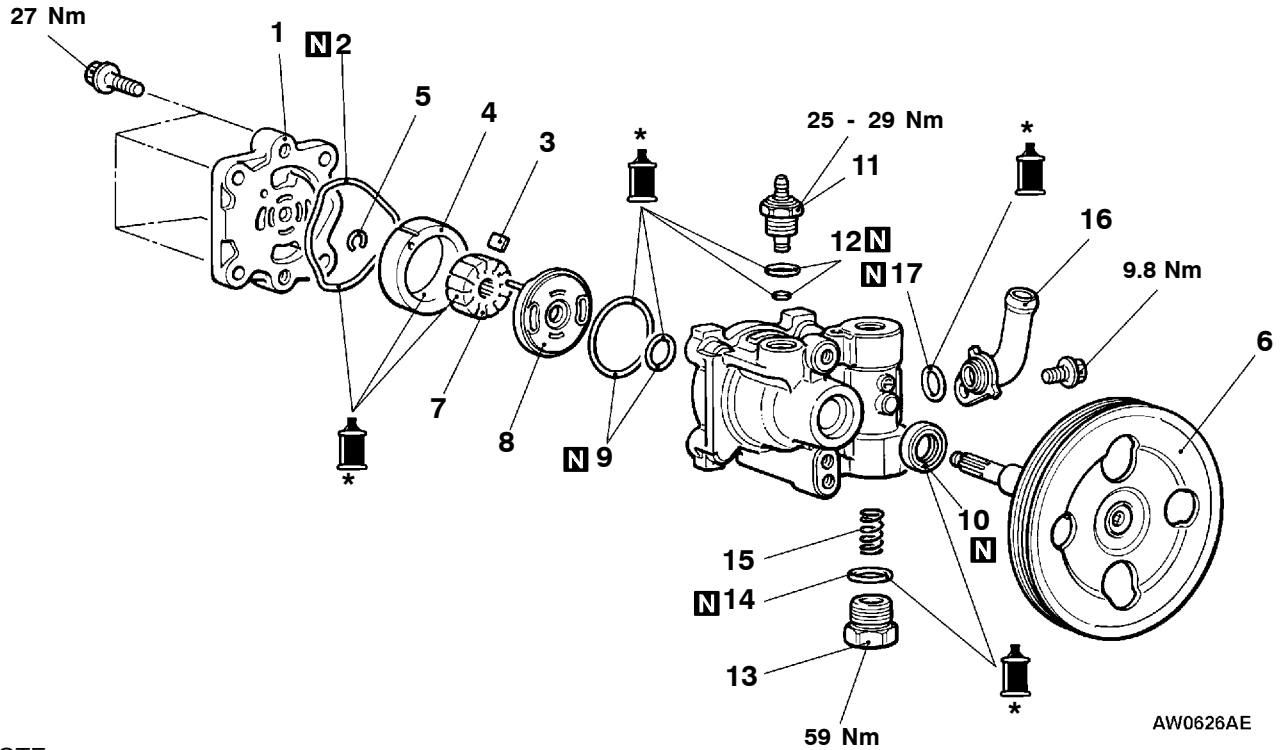
For service point, refer to Basic Manual.



DISASSEMBLY AND REASSEMBLY

Caution

Never disassemble the terminal assembly.



NOTE

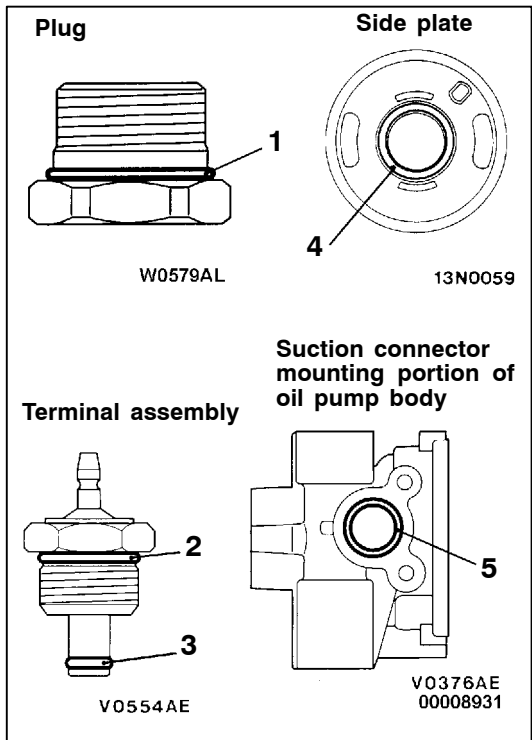
*: Automatic transmission fluid DEXRON or DEXRON II

<p>AV0558AE</p>	<p>V0557AE</p>	<p>V0556AE</p>
<p>Oil pump seal kit</p>	<p>Oil pump cartridge kit</p>	<p>Oil pump pulley and shaft kit</p>

Disassembly steps

- 1. Pump cover
- ▶E◀ 2. O-ring
- ▶D◀ 3. Vanes
- ▶C◀ 4. Cam ring
- ▶A◀ 5. Snap ring
- ▶C◀ 6. Oil pump pulley and shaft
- ▶A◀ 7. Rotor
- ▶A◀ 8. Side plate
- ▶A◀ 9. O-ring

- ▶B◀ 10. Oil seal
- ▶A◀ 11. Terminal assembly
- ▶A◀ 12. O-ring
- ▶A◀ 13. Plug
- ▶A◀ 14. O-ring
- ▶A◀ 15. Flow control spring
- ▶A◀ 16. Suction connector
- ▶A◀ 17. O-ring
- ▶A◀ 18. Oil pump body



REASSEMBLY SERVICE POINTS

Items other than those given below are the same as before.

►A◄ O-RINGS INSTALLATION

No.	I.D. × Width mm
1	19.8 × 2.4
2	14.8 × 1.9
3	3.8 × 1.9
4	14.8 × 2.4
5	15.8 × 2.4

POWER STEERING HOSES

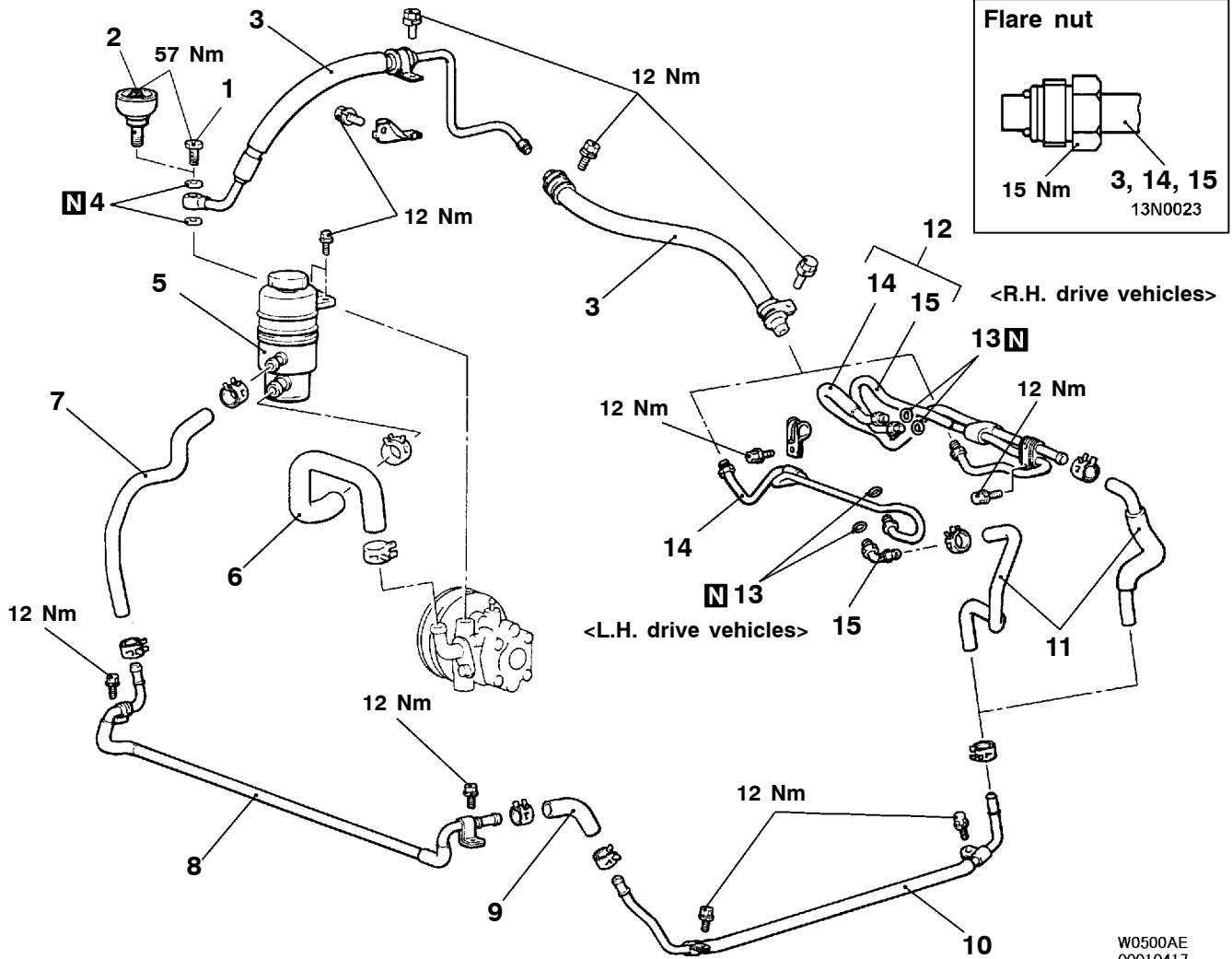
REMOVAL AND INSTALLATION

Pre-removal Operation

- Power Steering Fluid Draining
- Under Cover Removal

Post-installation Operation

- Under Cover Installation
- Power Steering Fluid Supplying
- Power Steering Fluid Line Bleeding



W0500AE
00010417

Removal steps

1. Eye bolt <2000>
2. Accumulator <2400>
3. Pressure hose
4. Gasket
5. Oil reservoir
6. Suction hose
7. Return hose
8. Cooler pipe
9. Return hose

10. Return pipe
11. Return hose
12. Pipe assembly
13. O ring
14. Pressure pipe assembly
15. Return pipe assembly

NOTE

For service points, refer to Basic Manual.