

---

# REAR AXLE

## <4WD>



### CONTENTS

<b>GENERAL</b> .....	<b>2</b>	<b>DRIVE SHAFT</b> .....	<b>4</b>
Outline of Change .....	2	<b>DIFFERENTIAL MOUNT</b> .....	<b>7</b>
<b>ON-VEHICLE SERVICE</b> .....	<b>2</b>	<b>DIFFERENTIAL CARRIER</b> .....	<b>8</b>
Differential Carrier Oil Seal Replacement .....	2		

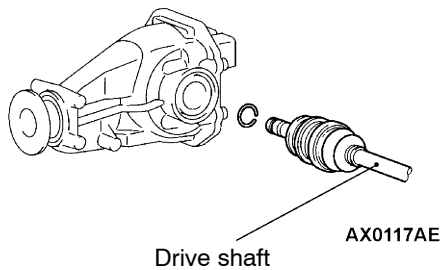
---

## GENERAL

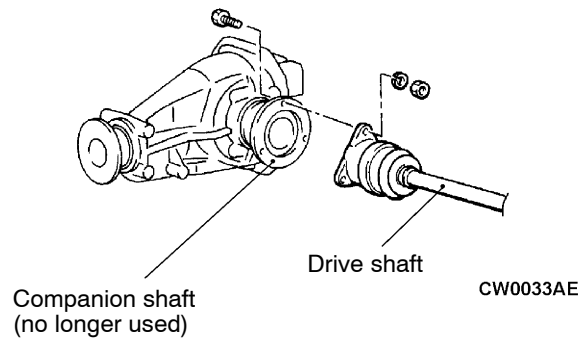
### OUTLINE OF CHANGE

- The following service procedures have been added as the drive shaft has been modified and the companion shaft has been no longer used.
- (1) DIFFERENTIAL CARRIER OIL SEAL REPLACEMENT
- (2) DRIVE SHAFT REMOVAL AND INSTALLATION
- (3) DIFFERENTIAL MOUNT REMOVAL AND INSTALLATION
- (4) DIFFERENTIAL CARRIER REMOVAL AND INSTALLATION

&lt;New&gt;



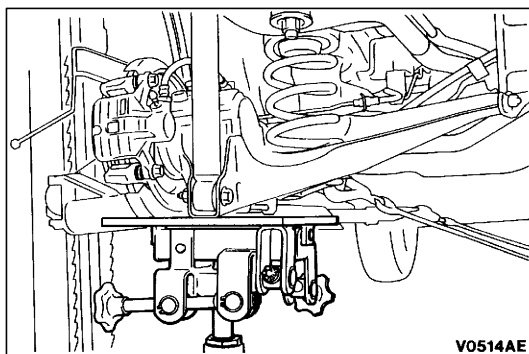
&lt;Old&gt;

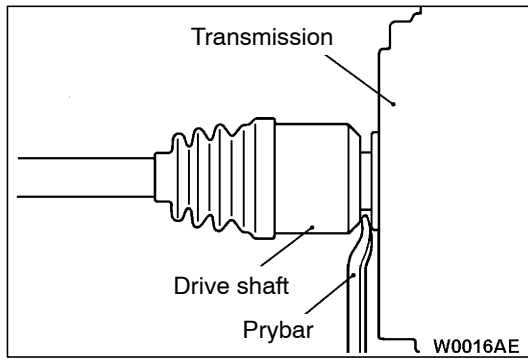


## ON-VEHICLE SERVICE

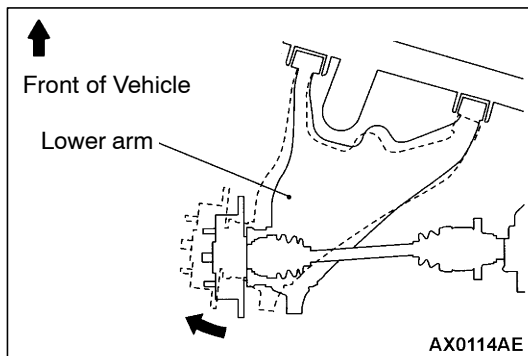
### DIFFERENTIAL CARRIER OIL SEAL REPLACEMENT

1. Remove the rear wheel speed sensor and the clamp of the parking brake cable.
2. Support the lower arm assembly with a transmission jack. After compressing the coil spring, remove the shock absorber mounting bolt (inner side) and the lower arm mounting bolt. Loosen the lower arm mounting bolt (outer side).





3. Use a tyre lever to disengage the rear differential case and the drive shaft.



4. Slide out the lower arm.
5. Lowering the jack, remove the drive shaft and the coil spring.

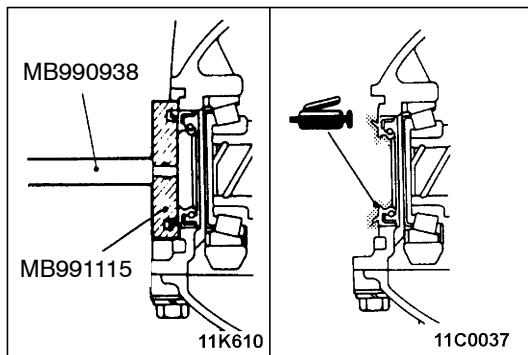
#### Caution

**Be careful not to damage the differential carrier oil seal by the drive shaft spline.**

6. Remove the oil seal of the differential carrier.
7. Use the special tool to set a new oil seal in position.
8. Apply multipurpose grease to the lip section of the oil seal and to the oil seal contact surface of the drive shaft.
9. Replace the circlip on the companion shaft with a new one, and then install the companion shaft onto the differential carrier.

#### Caution

**Be careful not to damage the differential carrier oil seal by the drive shaft spline.**



## DRIVE SHAFT

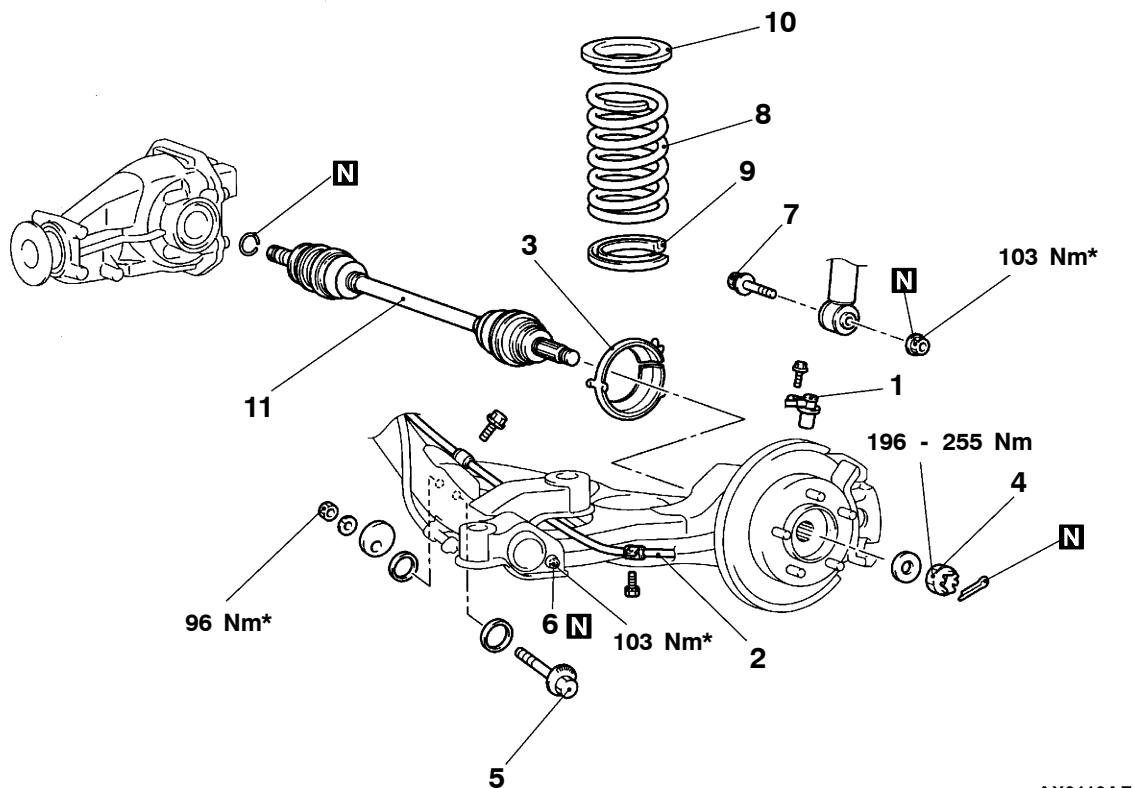
### REMOVAL AND INSTALLATION

#### Caution

\*: To prevent bushings from breakage, the parts indicated by \* should be temporarily tightened and then fully tightened with the vehicle on the ground in the unladen condition.

#### Pre-removal and Post-installation Operation

- Main Muffler Assembly Removal and Installation <Right drive shaft only>
- Wheel Alignment Check and Adjustment



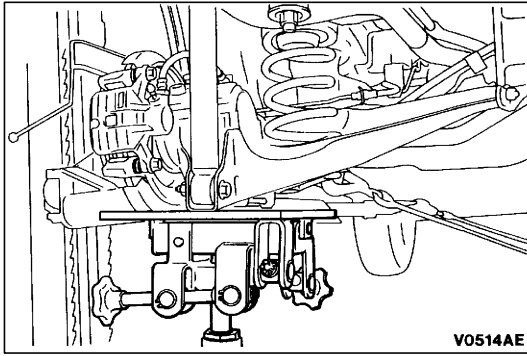
AX0118AE

#### Removal steps

1. Rear wheel speed sensor <vehicles with ABS>
2. Parking brake cable connection
3. Cover
4. Drive shaft nut
5. Bolt assembly



6. Nut
7. Shock absorber mounting bolt
8. Coil spring
9. Tube pad
10. Spring pad
11. Drive shaft

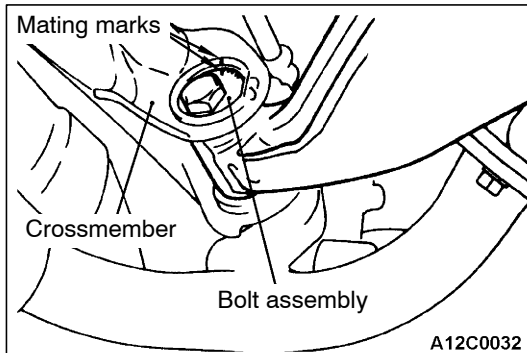


## REMOVAL SERVICE POINTS

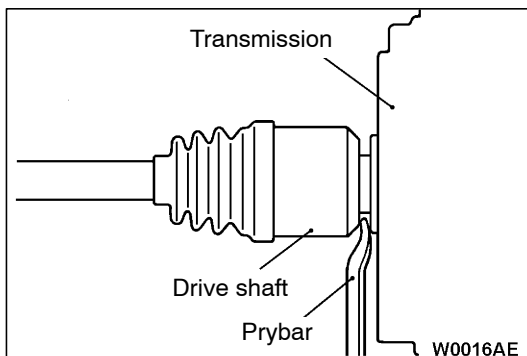
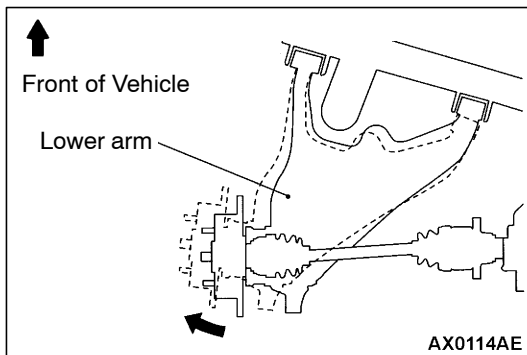
Items other than those given below are the same as before.

### ◀B▶ BOLT ASSEMBLY/NUT REMOVAL

1. Jack up the rear shock absorber.
2. Matchmark the lower arm bolt assembly and the crossmember and remove the bolt assembly.



3. Loosen the nut and slide out the lower arm.



### ◀C▶ DRIVE SHAFT REMOVAL

Use a tyre lever to disengage the rear differential and the drive shaft. Lowering the jack, remove the drive shaft.

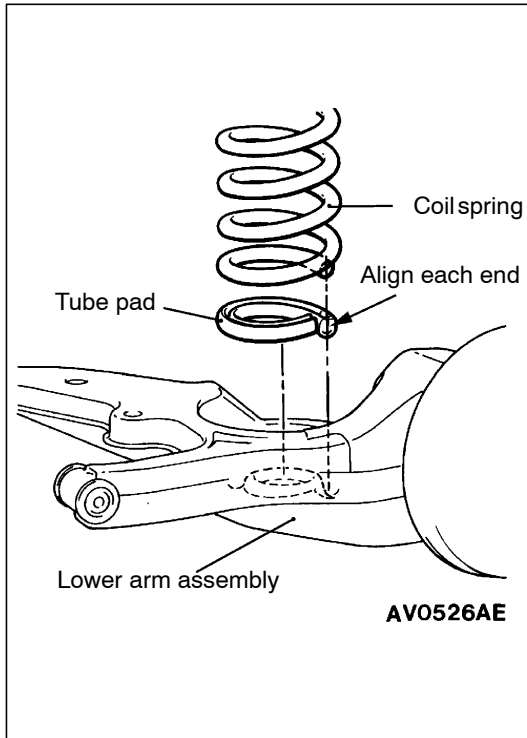
## INSTALLATION SERVICE POINTS

Items other than those given below are the same as before.

### ▶A◀ DRIVE SHAFT INSTALLATION

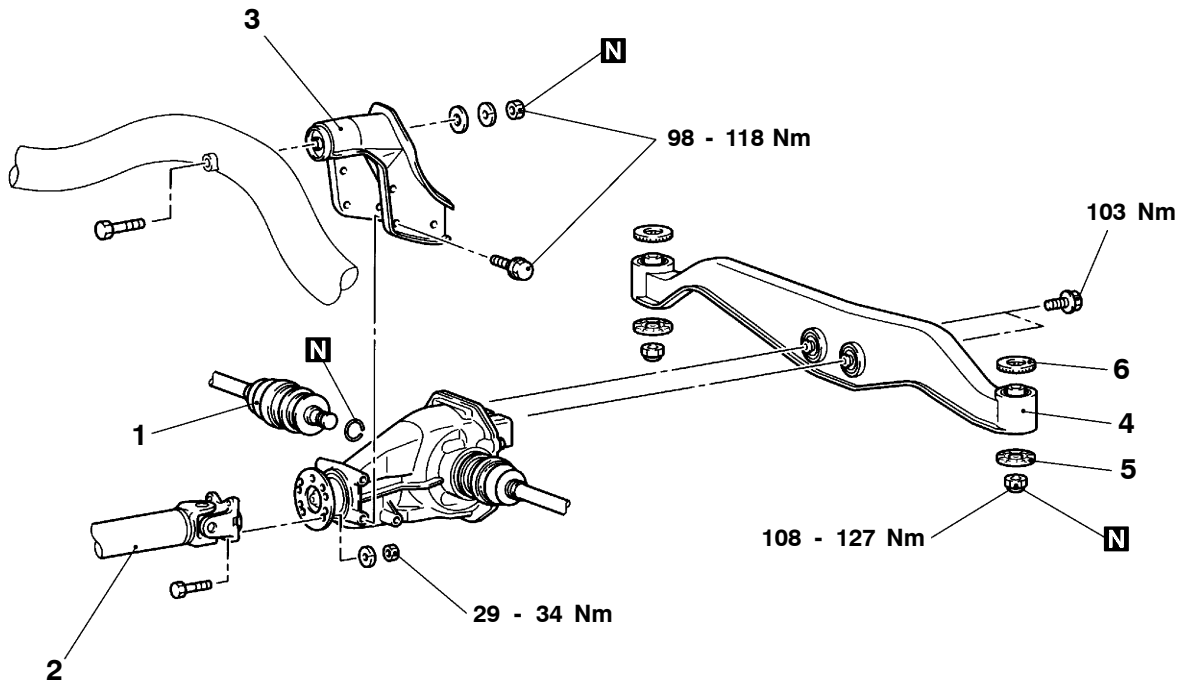
#### Caution

Be careful not to damage the oil seal of the transmission by the spline of the shaft.

**►B◄ TUBE PAD/COIL SPRING INSTALLATION**

Install the tube pad to the coil spring while aligning the end of the pad with that of the spring. Then engage the bottom of the coil spring in the spring seat groove of the lower arm assembly properly.

# DIFFERENTIAL MOUNT REMOVAL AND INSTALLATION



AX0119AE

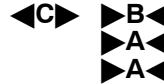
## Bracket assembly removal steps

1. Disconnection of right drive shaft  
(Refer to P.27B-3.)
2. Propeller shaft connection
3. Bracket assembly



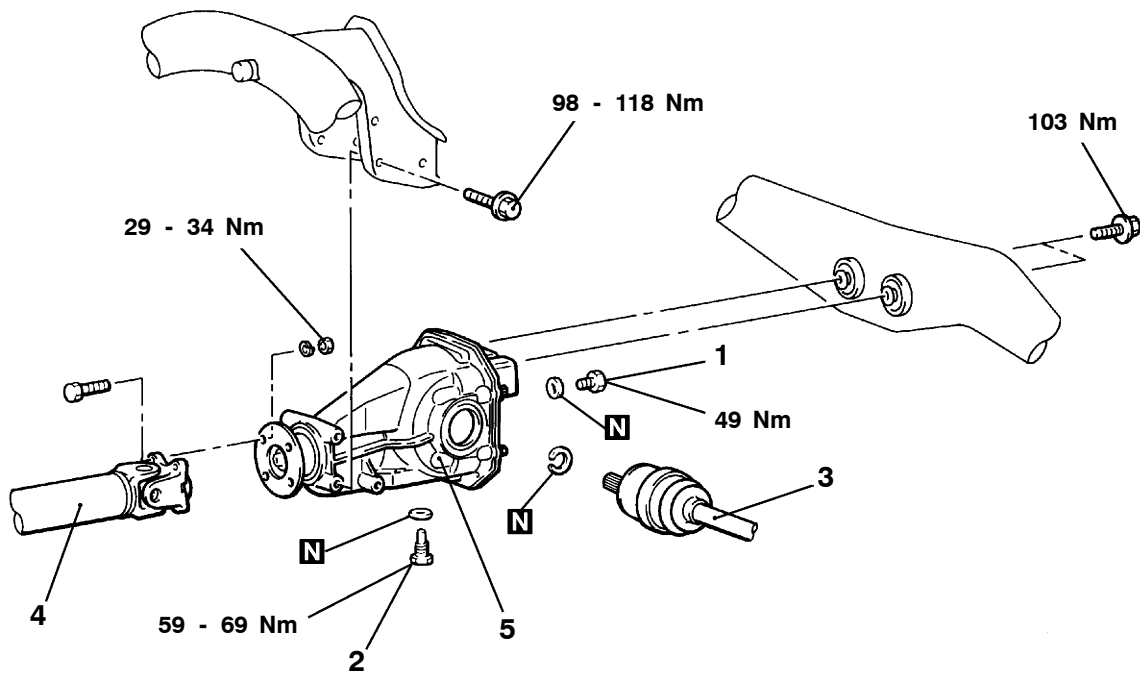
## Differential support member removal steps

- Main muffler assembly
- 4. Differential support member
- 5. Lower stopper
- 6. Upper stopper



### NOTE

For service point, refer to Basic Manual.

**DIFFERENTIAL CARRIER****REMOVAL AND INSTALLATION**

BW0135AE

**Removal steps**

- C◄ 1. Filler plug  
 2. Drain plug  
 3. Drive shaft connection (Refer to P.27B-3)  
 ◄A► ►B◄ 4. Propeller shaft connection

- ◄B► 5. Differential carrier assembly

**NOTE**

For service point, refer to Basic Manual.