

ACCELERATOR CONTROL, FUEL & EXHAUST SYSTEMS

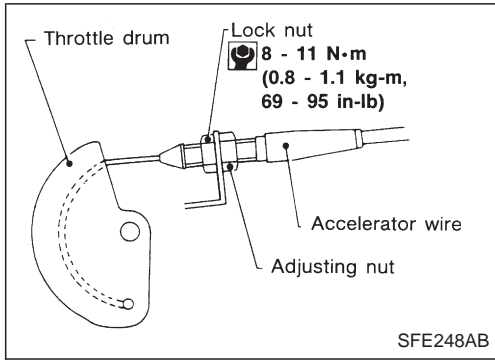
SECTION **FE**

FE

CONTENTS

PREPARATION/ACCELERATOR CONTROL SYSTEM	1	Adjusting Accelerator Wire	2
Special Service Tool	1	FUEL SYSTEM	3
Accelerator Control System	1	EXHAUST SYSTEM	5

PREPARATION/ACCELERATOR CONTROL SYSTEM




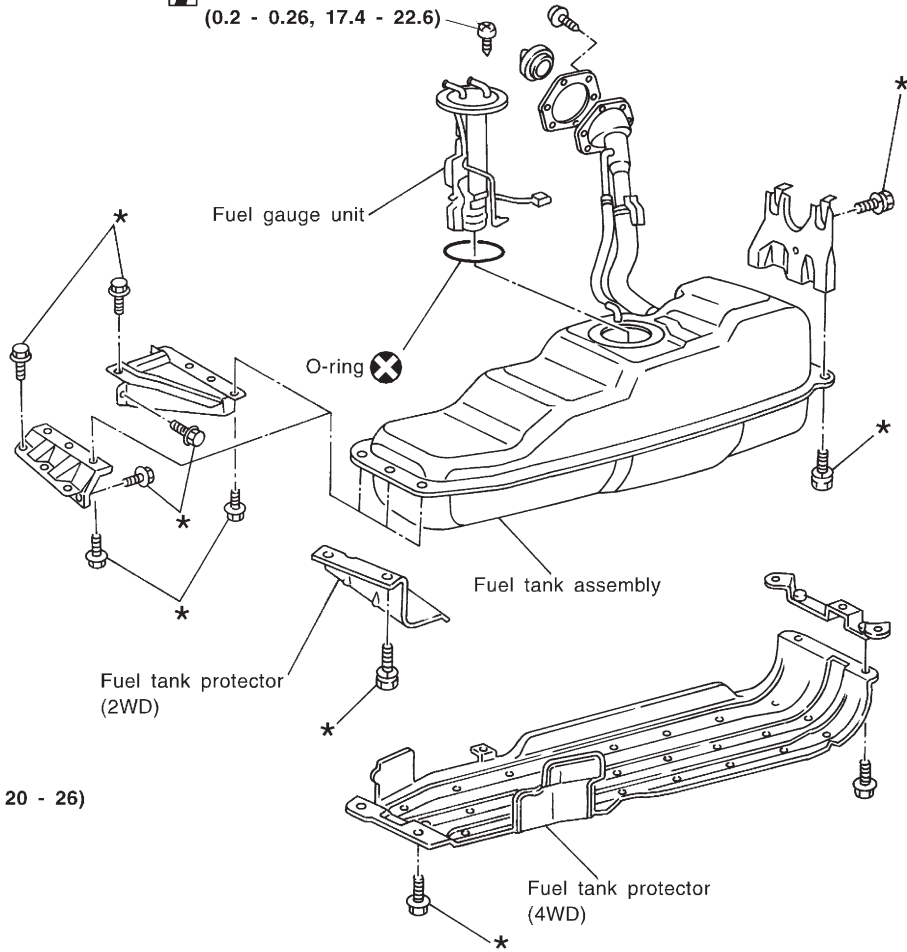
Adjusting Accelerator Wire


1. Loosen lock nut, and tighten adjusting nut until throttle drum starts to move.
2. From that position turn back adjusting nut 1.5 to 2 turns, and fasten it with lock nut.


FUEL SYSTEM


Diesel engine model
SEC. 172

 2.0 - 2.5
(0.2 - 0.26, 17.4 - 22.6)



* :  27 - 35 (2.8 - 3.6, 20 - 26)

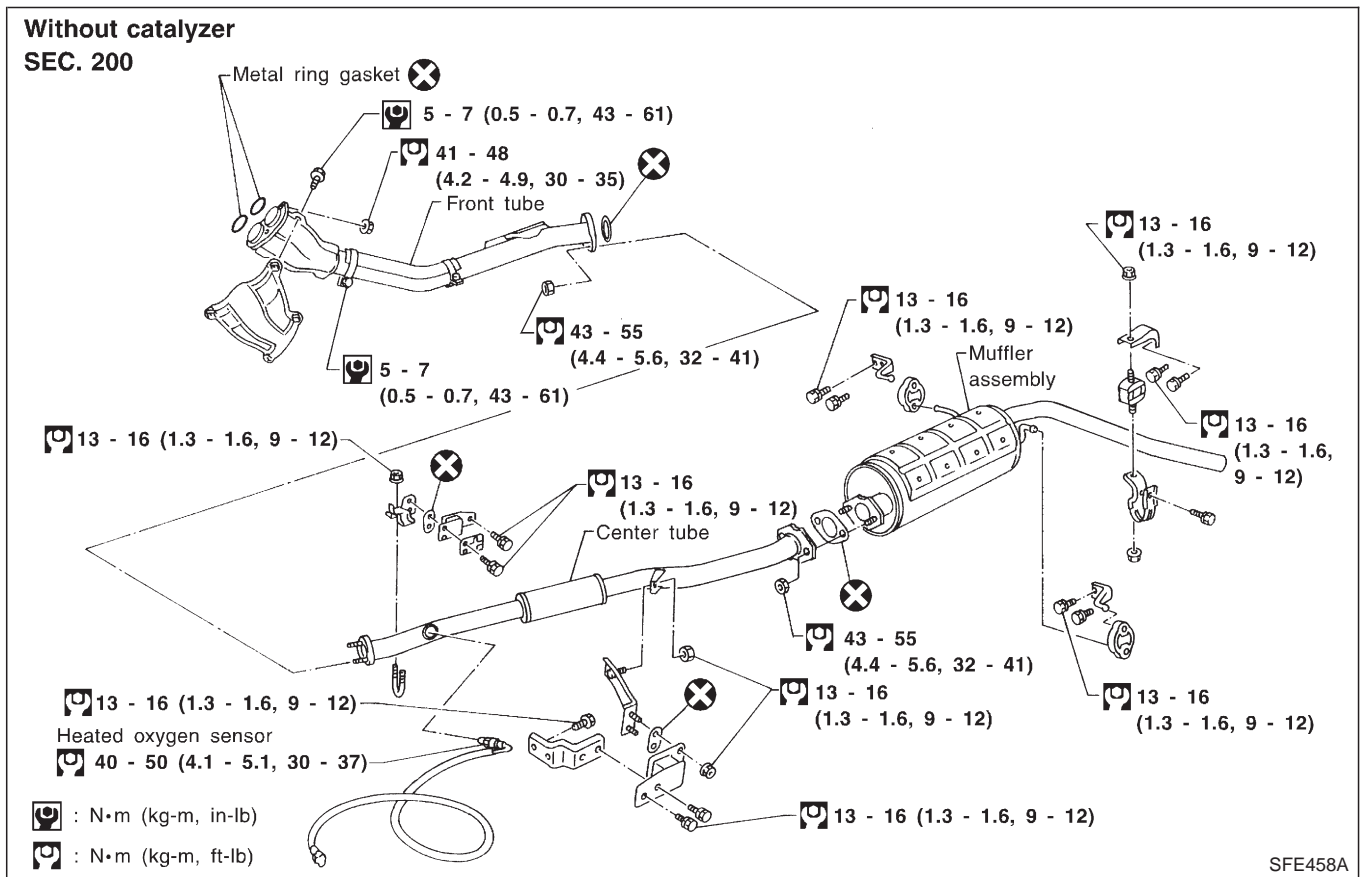
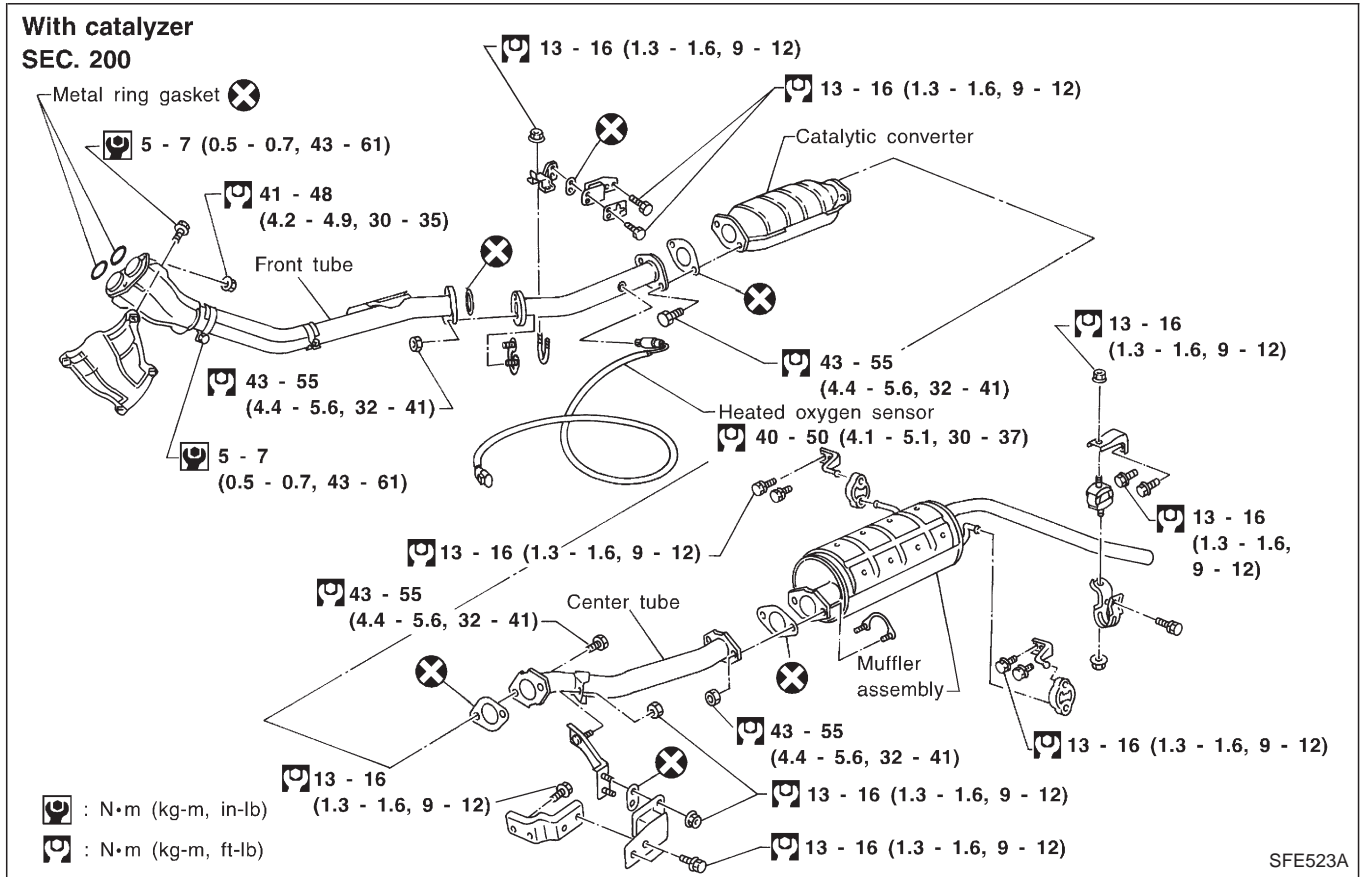
 : N·m (kg-m, in-lb)

 : N·m (kg-m, ft-lb)

SFE524A

EXHAUST SYSTEM

KA24E ENGINE (4WD) MODEL

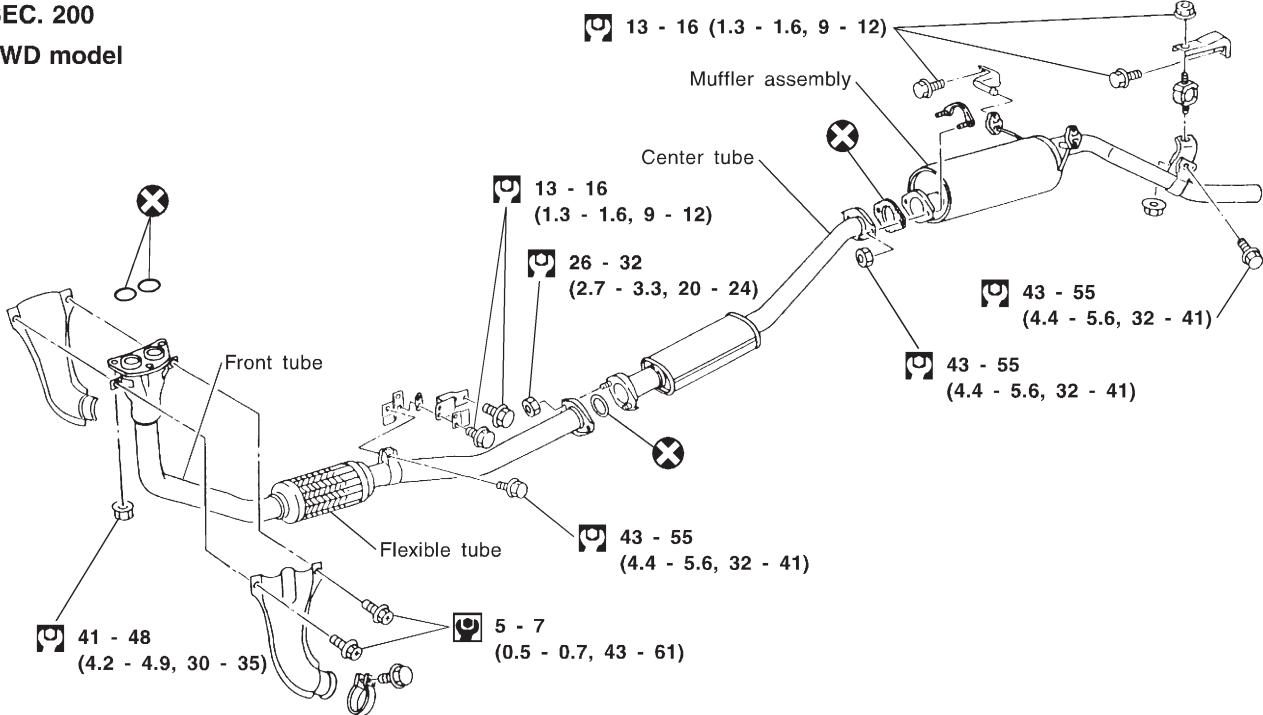


EXHAUST SYSTEM

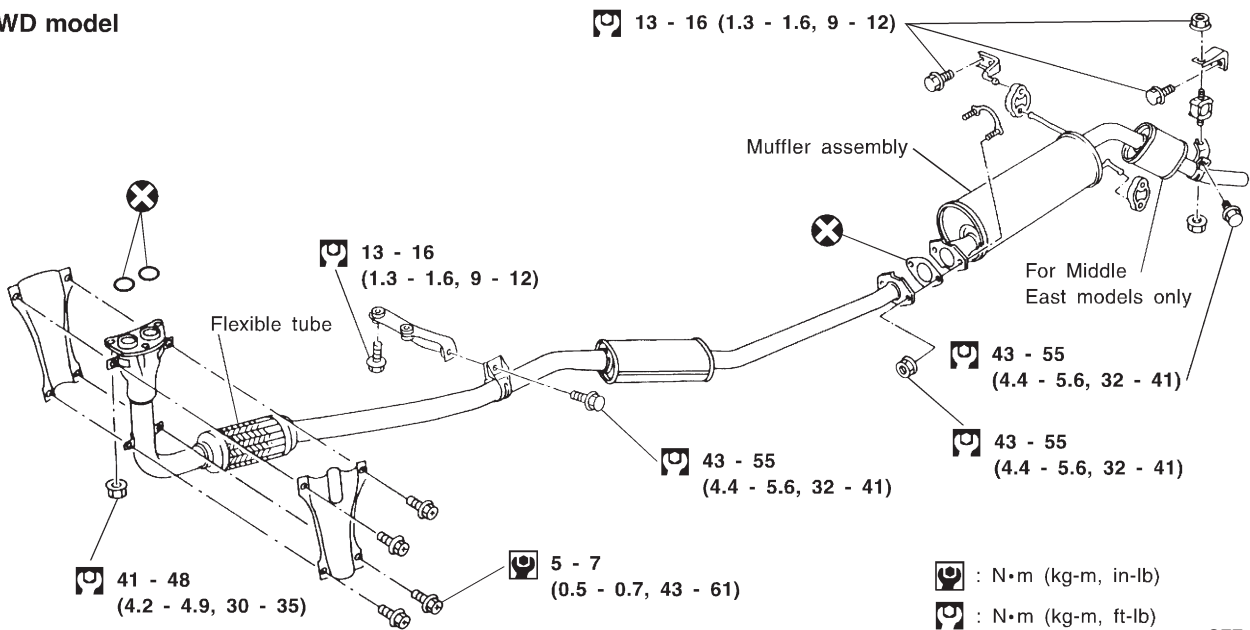
DIESEL ENGINE MODEL

SEC. 200

4WD model



2WD model



SFE455AA