

SECTION **MT**

**CONTENTS**

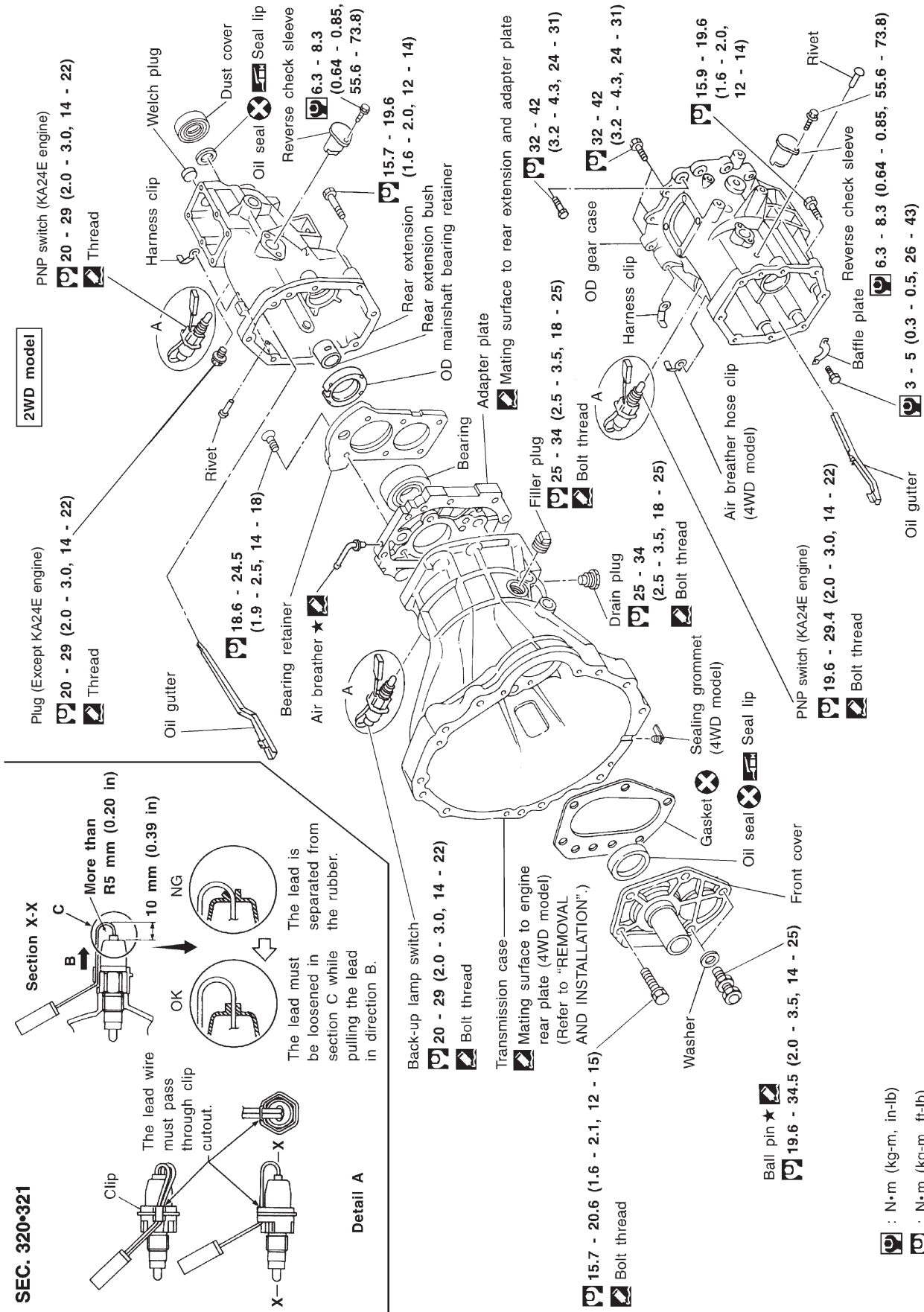
<input type="text"/>	<b>FS5W71C</b>	<input type="text"/>
<b>MAJOR OVERHAUL</b> .....		2002
Case Components .....		2002
Gear Components - 2WD Model .....		2003
Gear Components - 4WD Model .....		2004

<input type="text"/>	<b>FS5R30A</b>	<input type="text"/>
<b>MAJOR OVERHAUL</b> .....		2005

Case Components .....	2005
Shift Control Components .....	2006

<input type="text"/>	<b>FS5W71C &amp; FS5R30A</b>	<input type="text"/>
<b>SERVICE DATA AND SPECIFICATIONS (SDS)</b> .....		2007
General Specifications .....		2007

Case Components



- : N·m (kg-m, in-lb)
- : N·m (kg-m, ft-lb)
- : Apply recommended sealant, Nissan genuine part: KP610-00250, Three Bond 1215 or equivalent.
- : Apply genuine Three Bond TB1324, Loctite 271 or equivalent (locking sealant).

Gear Components — 2WD Model

SEC. 322



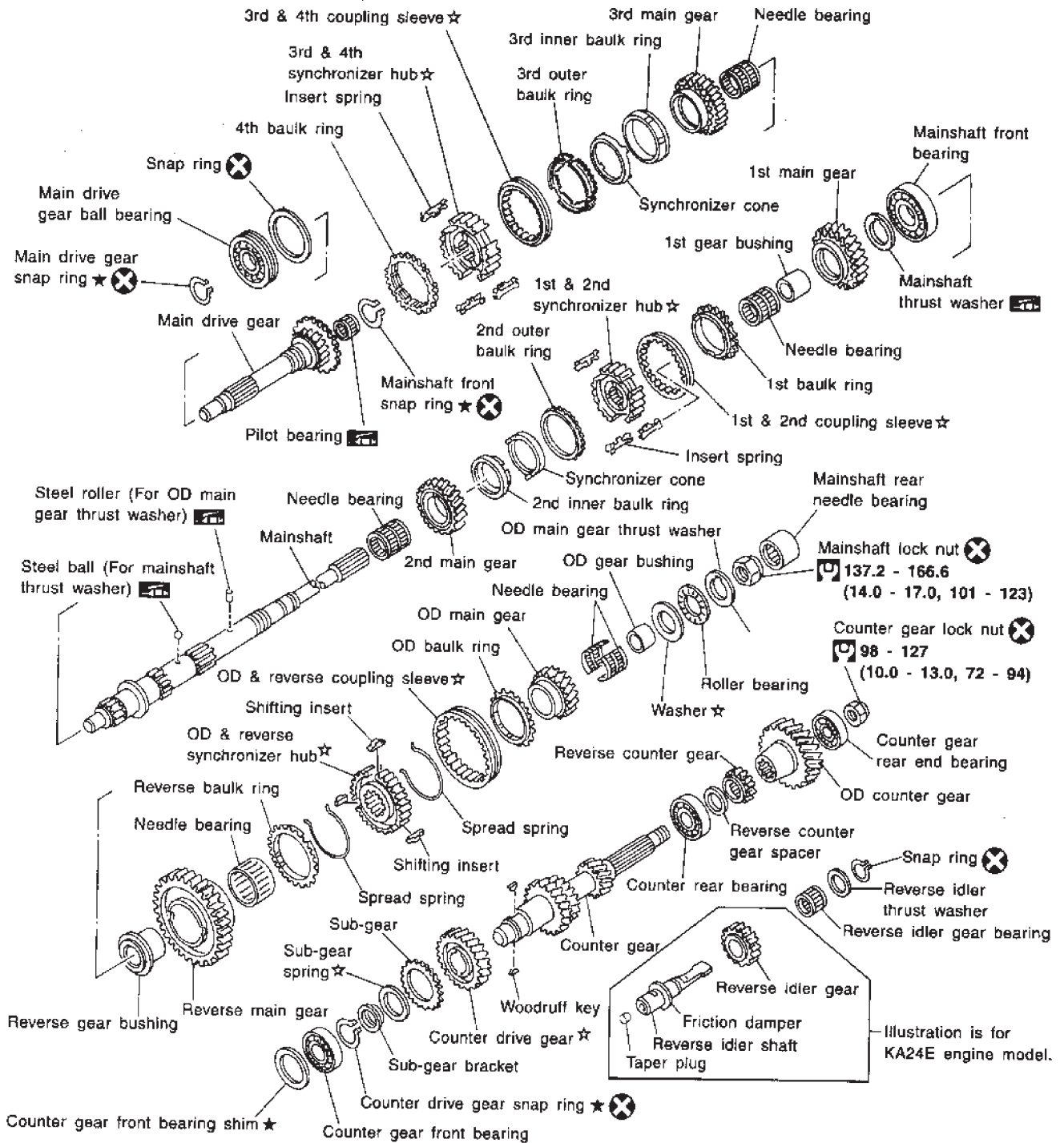
Apply gear oil to gears, shafts, synchronizers and bearings when assembling.

- ★ : Select with proper thickness.
- ☆ : Pay attention to its direction.
- ☒ : N·m (kg-m, ft-lb)
- ☒ : Should be lubricated with grease.

Reverse idler gear components	
KA24E engine	TD25 engine

Gear Components — 4WD Model

SEC. 322

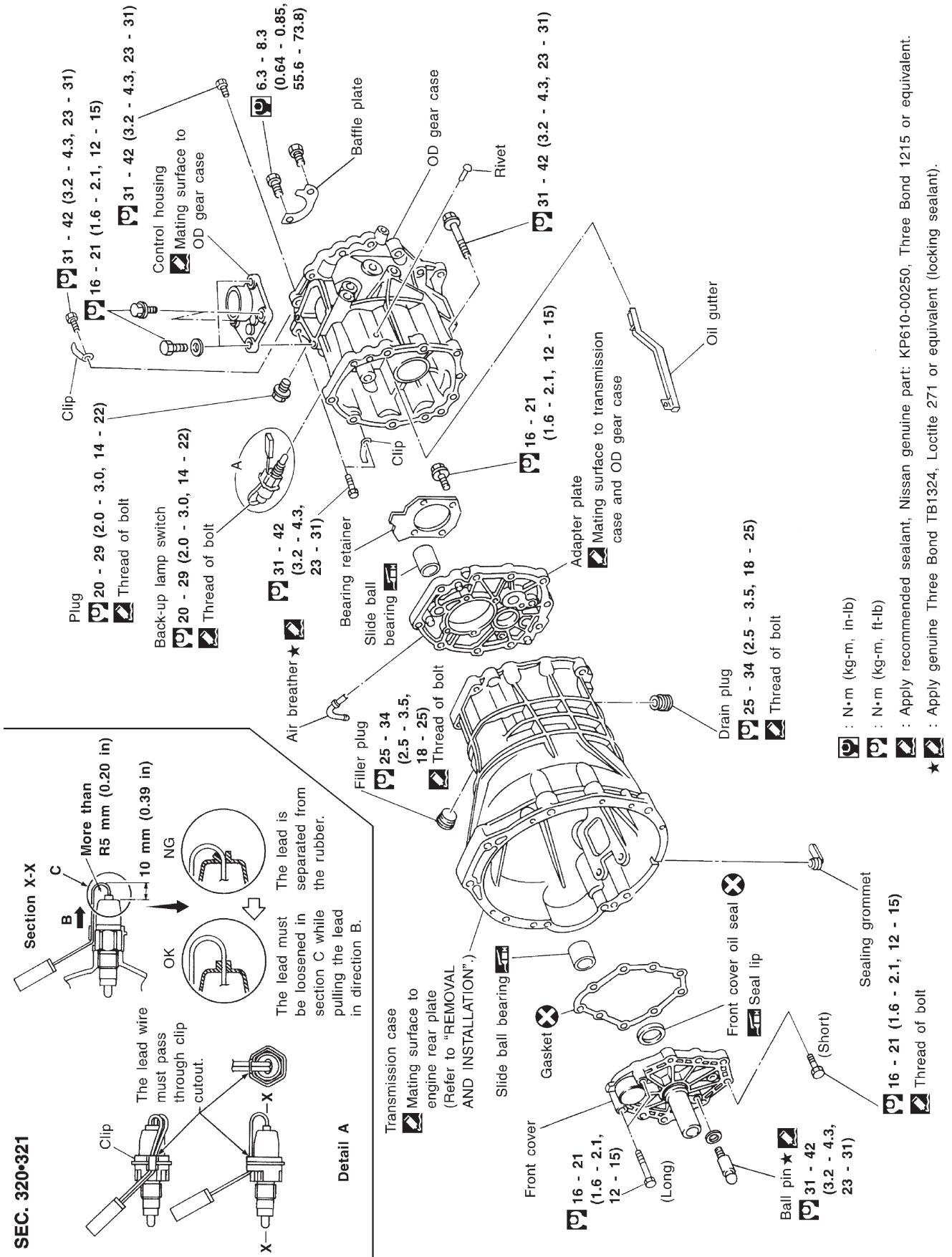


Apply gear oil to gears, shafts, synchronizers and bearings when assembling.

- ★ : Select with proper thickness.
- ☆ : Pay attention to its direction.
- ◻ : N·m (kg-m, ft-lb)
- ⊠ : Should be lubricated with grease.

Illustration is for KA24E engine model.

Case Components



SEC. 320•321

MT-2005

SMT897D

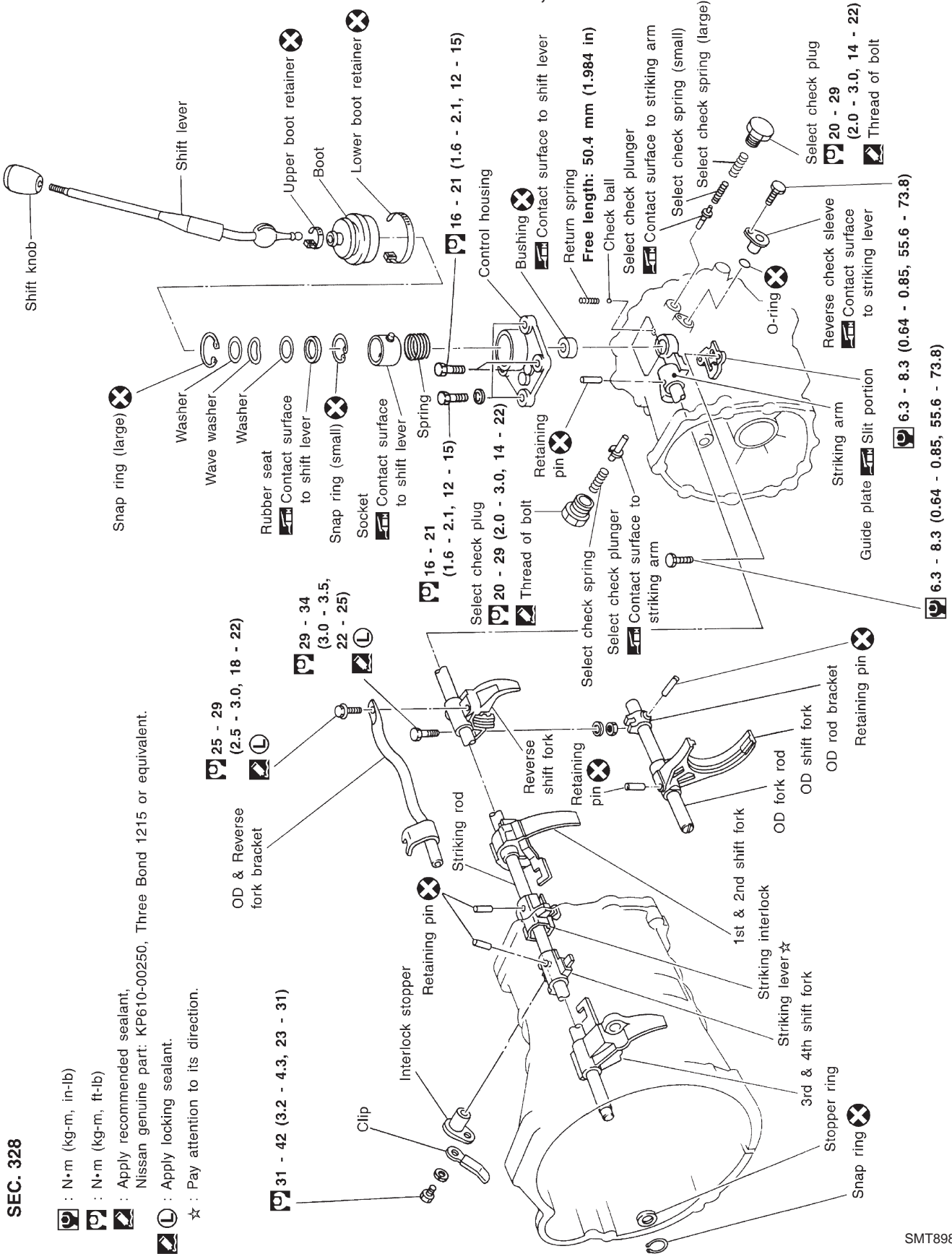
- ☐ : N·m (kg-m, in-lb)
- ☐ : N·m (kg-m, ft-lb)
- ☐ : Apply recommended sealant, Nissan genuine part: KP610-00250, Three Bond 1215 or equivalent.
- ☐ : Apply genuine Three Bond TB1324, Loctite 271 or equivalent (locking sealant).

★

Shift Control Components

CAUTION:

To avoid damage when replacing shift knob, remove shift lever with knob, as assembled.



SEC. 328

: N•m (kg-m, in-lb)

: N•m (kg-m, ft-lb)

: Apply recommended sealant,  
Nissan genuine part: KP610-00250, Three Bond 1215 or equivalent.

: Apply locking sealant.


☆ : Pay attention to its direction.



# SERVICE DATA AND SPECIFICATIONS (SDS)

FS5W71C & FS5R30A

## General Specifications

Applied model	2WD		4WD		
	KA24E	TD25	KA24E	TD25T	
Transmission	FS5W71C			FS5R30A	
Number of speed	5				
Shift pattern					
Synchromesh type	Warner				
Gear ratio					
1st	3.592	3.985	3.592	3.580	
2nd	2.246	2.246	2.246	2.077	
3rd	1.415	1.415	1.415	1.360	
4th	1.000	1.000	1.000	1.000	
OD	0.821	0.821	0.821	0.811	
Reverse	3.657	3.657	3.657	3.636	
Number of teeth					
Mainshaft					
Drive	21	21	21	22	
1st	33	34	33	32	
2nd	28	28	28	30	
3rd	26	26	26	29	
OD	21	21	21	24	
Reverse	36	36	36	30	
Countershaft					
Drive	32	32	32	32	
1st	14	13	14	13	
2nd	19	19	19	21	
3rd	28	28	28	31	
OD	39	39	39	43	
Reverse	15	15	15	12	
Reverse idler gear	21			22	
Oil capacity ℓ (Imp pt)	2.0 (3-1/2)		4.9 (8-5/8)	5.1 (9)	
Remarks	Sub-gear	Counter drive gear	Installed		2nd & 3rd double baulk ring type synchronizer
		Reverse idler gear	Not installed		
	Double baulk ring type synchronizer	2nd and 3rd gears			
	Reverse synchronizer	Installed			