

<SUPPLEMENT-II>

STEERING SYSTEM

SECTION **ST**

MODIFICATION NOTICE:

Steering column has been changed.

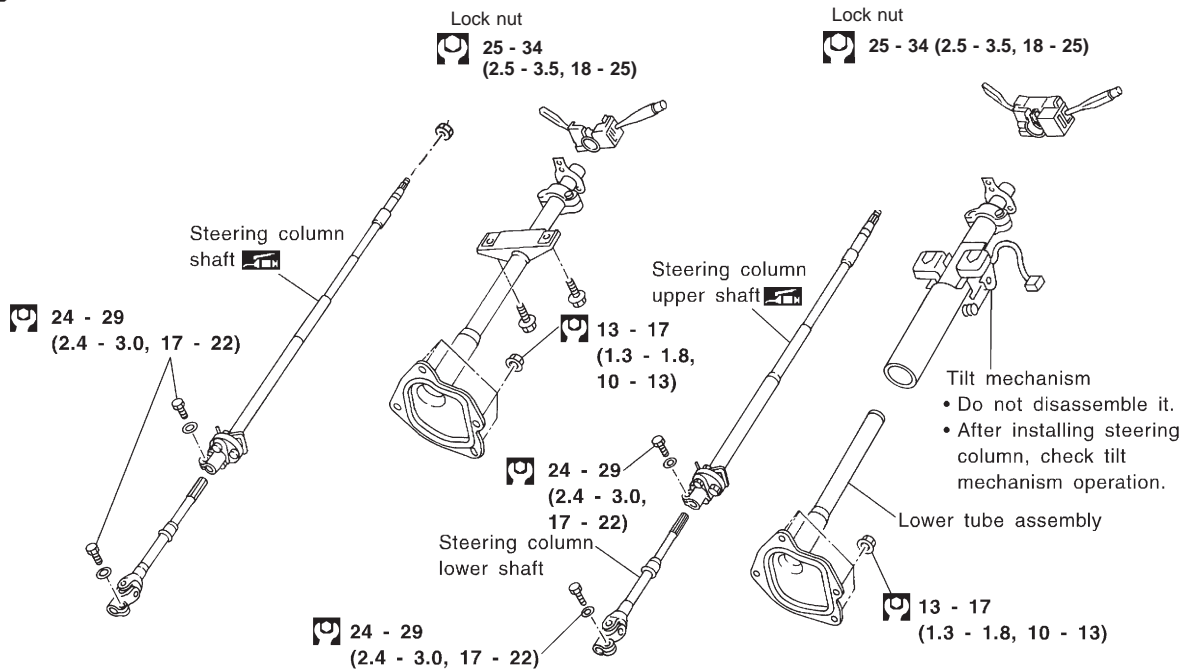
CONTENTS

STEERING WHEEL AND STEERING COLUMN	2002	SERVICE DATA AND SPECIFICATIONS (SDS)	2004
Disassembly and Assembly.....	2002	Inspection and Adjustment	2004

STEERING WHEEL AND STEERING COLUMN

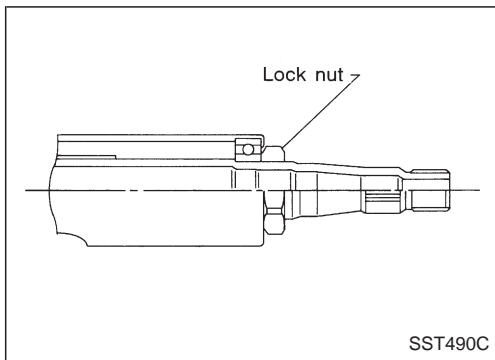
Disassembly and Assembly

SEC. 488

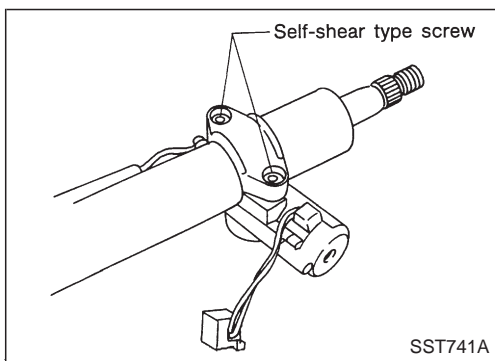


: N•m (kg-m, ft-lb)

NST046



- When disassembling and assembling, unlock steering lock with key.
- Remove combination switch.
- Install lock nut on steering column shaft and tighten the nut.



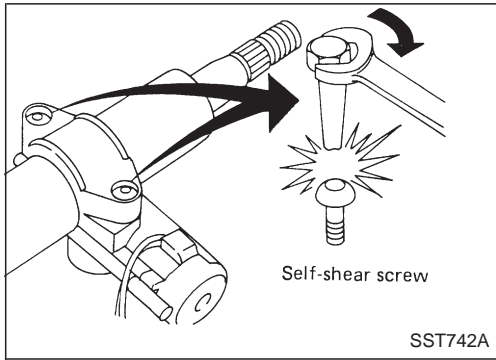
- Steering lock
 - a. Break self-shear type screws using a drill or other appropriate tool.

ST-2002

STEERING WHEEL AND STEERING COLUMN

Disassembly and Assembly (Cont'd)

- b. Install self-shear type screws, then tighten until heads break off.



SERVICE DATA AND SPECIFICATIONS (SDS)

Inspection and Adjustment

STEERING COLUMN

Unit: mm (in)

Applied model	RHD models with ABS	Except RHD models with ABS
Dimension "L"	851.0 - 852.6 (33.50 - 33.57)	822.5 - 824.1 (32.38 - 32.44)

