

ACCELERATOR CONTROL, FUEL & EXHAUST SYSTEMS

SECTION FE

MODIFICATION NOTICE:

- KA24DE engine model information has been added for Europe. For information not included here, refer to the KA24E engine model.
- YD25DDTi engine model has been added.

FE

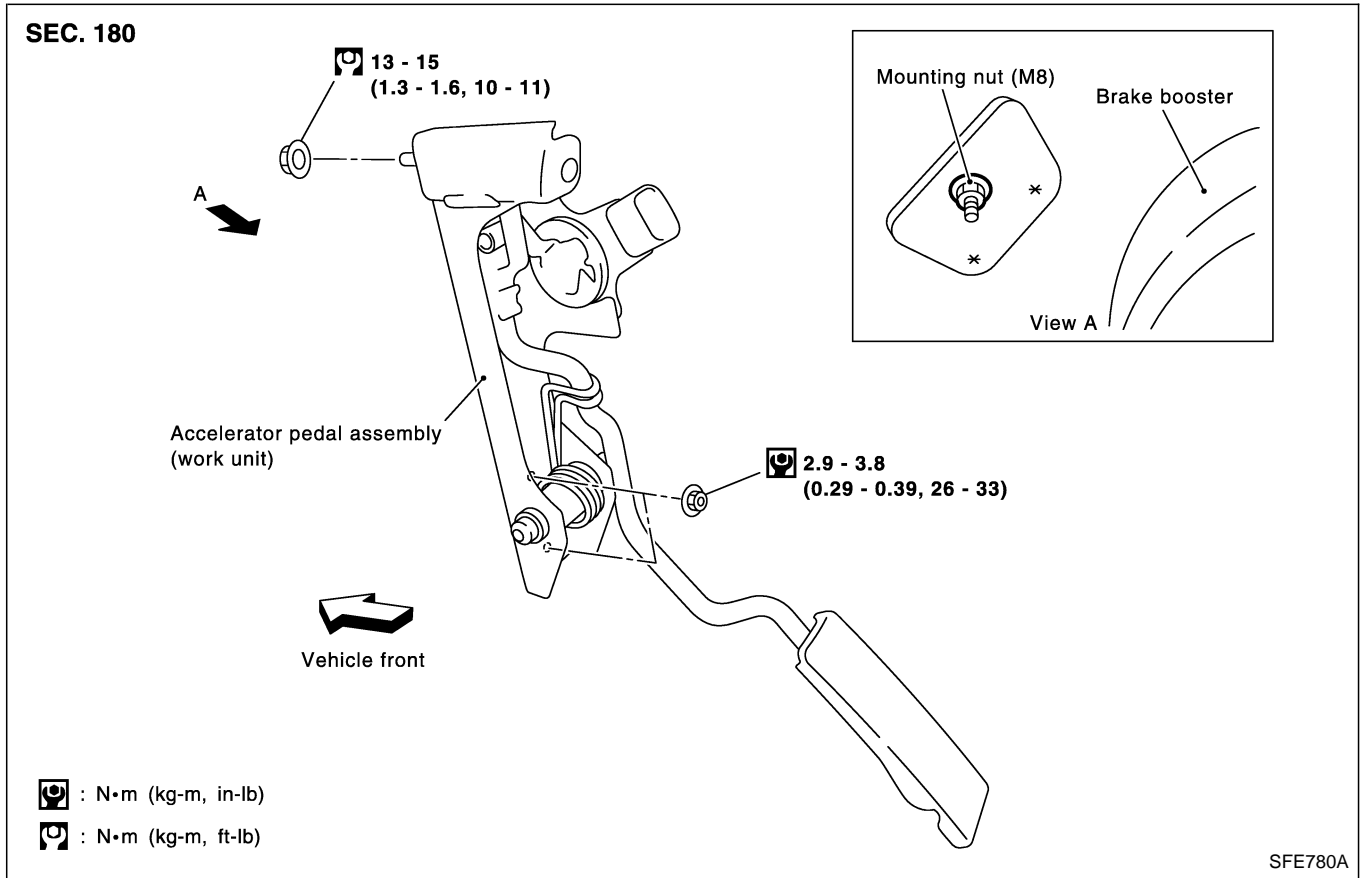
CONTENTS

ACCELERATOR CONTROL SYSTEM	3002	FUEL SYSTEM	3003
Removal and Installation	3002	EXHAUST SYSTEM	3005

ACCELERATOR CONTROL SYSTEM

Removal and Installation

YD25DDTi ENGINE MODEL



REMOVAL

1. Remove harness connector.
2. Loosen nuts, and remove accelerator pedal assembly.

CAUTION:

- Do not disassemble the accelerator pedal assembly. Do not remove the sensors and the switches from the assembly.
- Avoid impact from dropping etc. during handling.
- Be careful to keep the assembly away from water.
- Do not adjust the adjusting screw (painted white) of the accelerator work unit.
- When the harness connector of the accelerator sensor is disconnected, perform "Accelerator Pedal Released Position Learning". Refer to "Basic Service Procedure" in EC section.

INSTALLATION

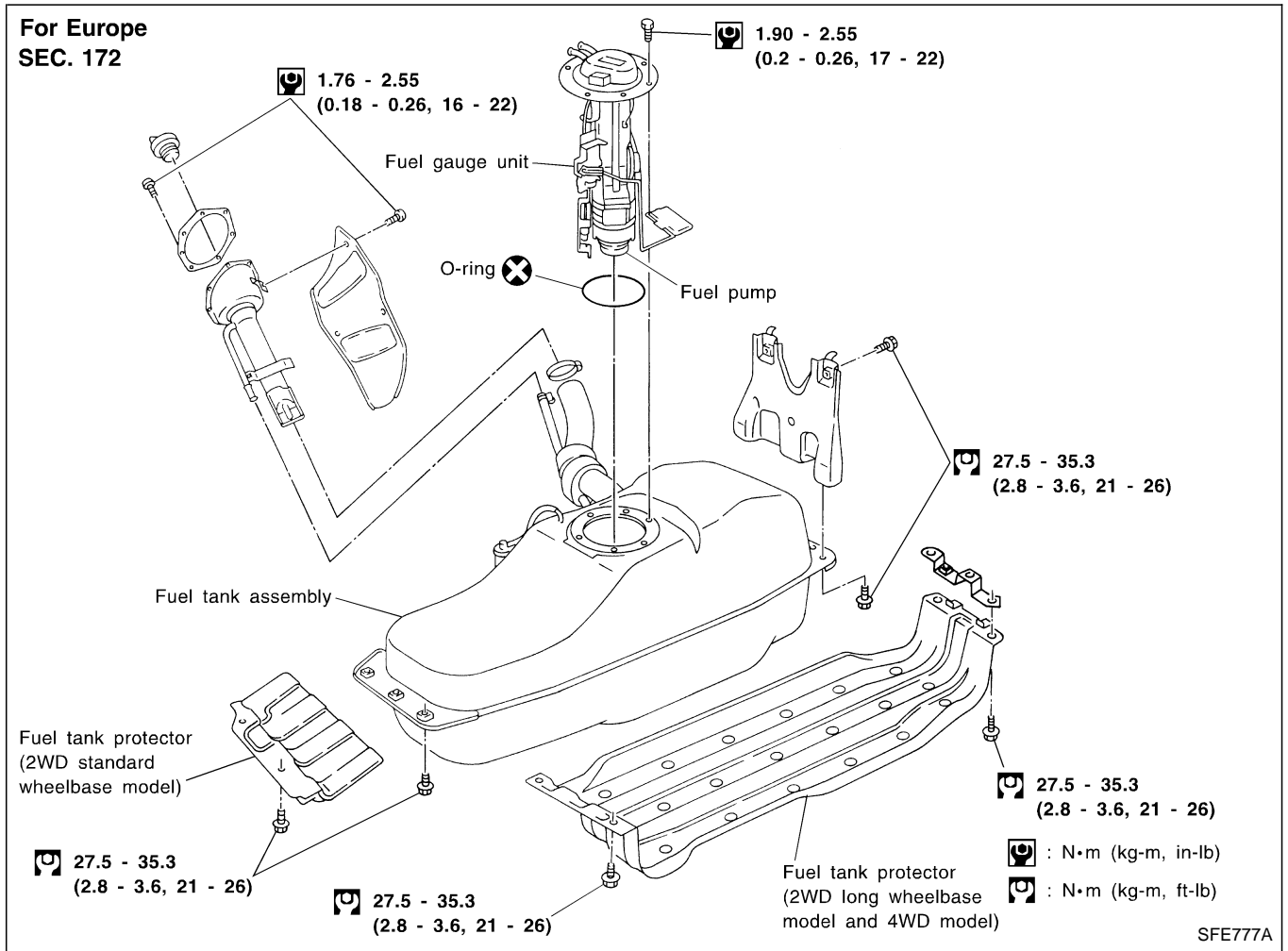
Install in the reverse order of removal.

INSPECTION AFTER INSTALLATION

- Check that the accelerator pedal moves smoothly within the whole operation range.
- Check that the accelerator pedal securely returns to the original position.
- For the electrical inspection of the accelerator work unit, refer to EC section, "DTC 0403 ACCELERATOR PEDAL POSITION SENSOR".
- Check that the drum of the accelerator work unit can be fully opened.

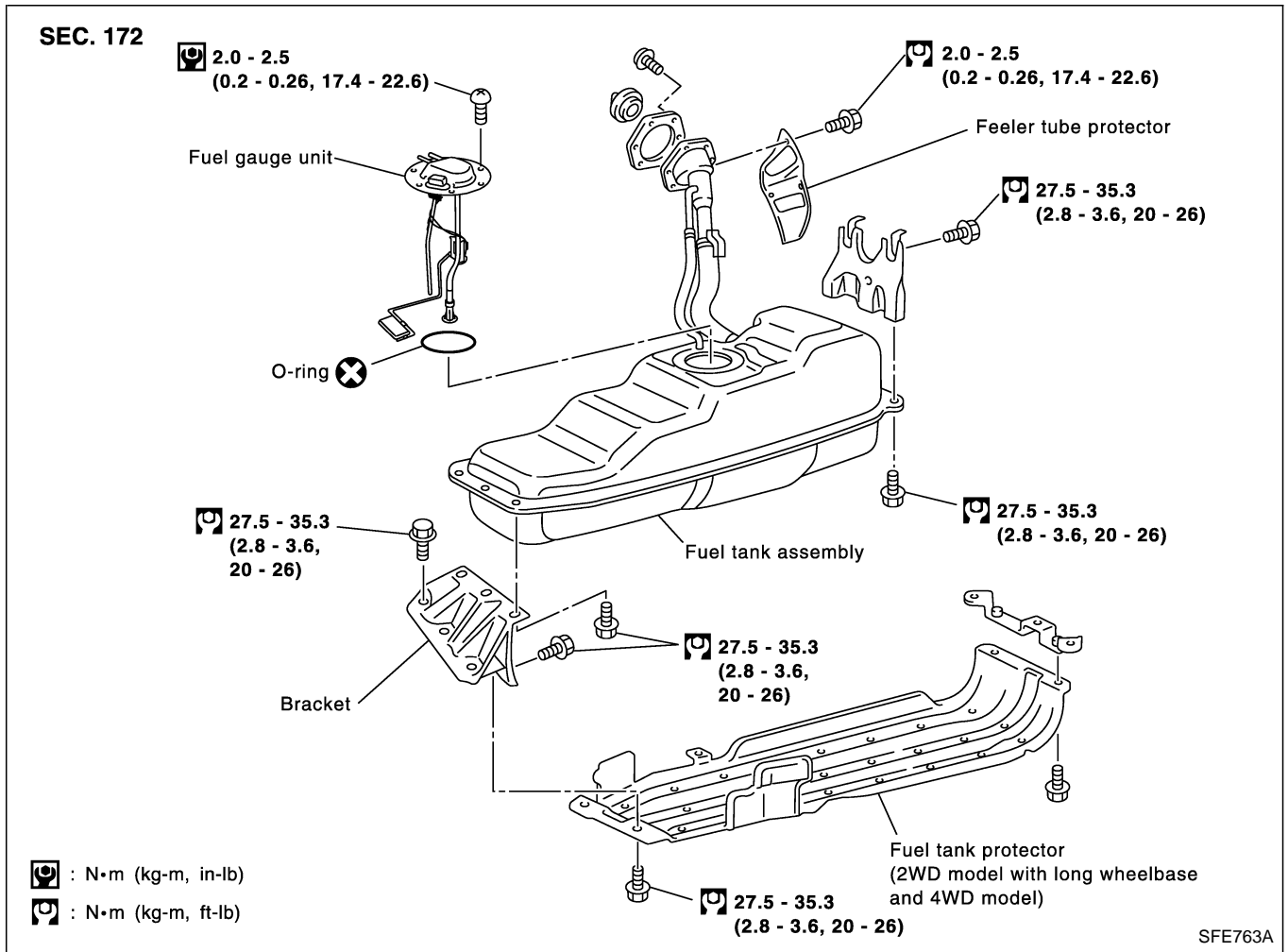
FUEL SYSTEM

KA24DE ENGINE MODEL



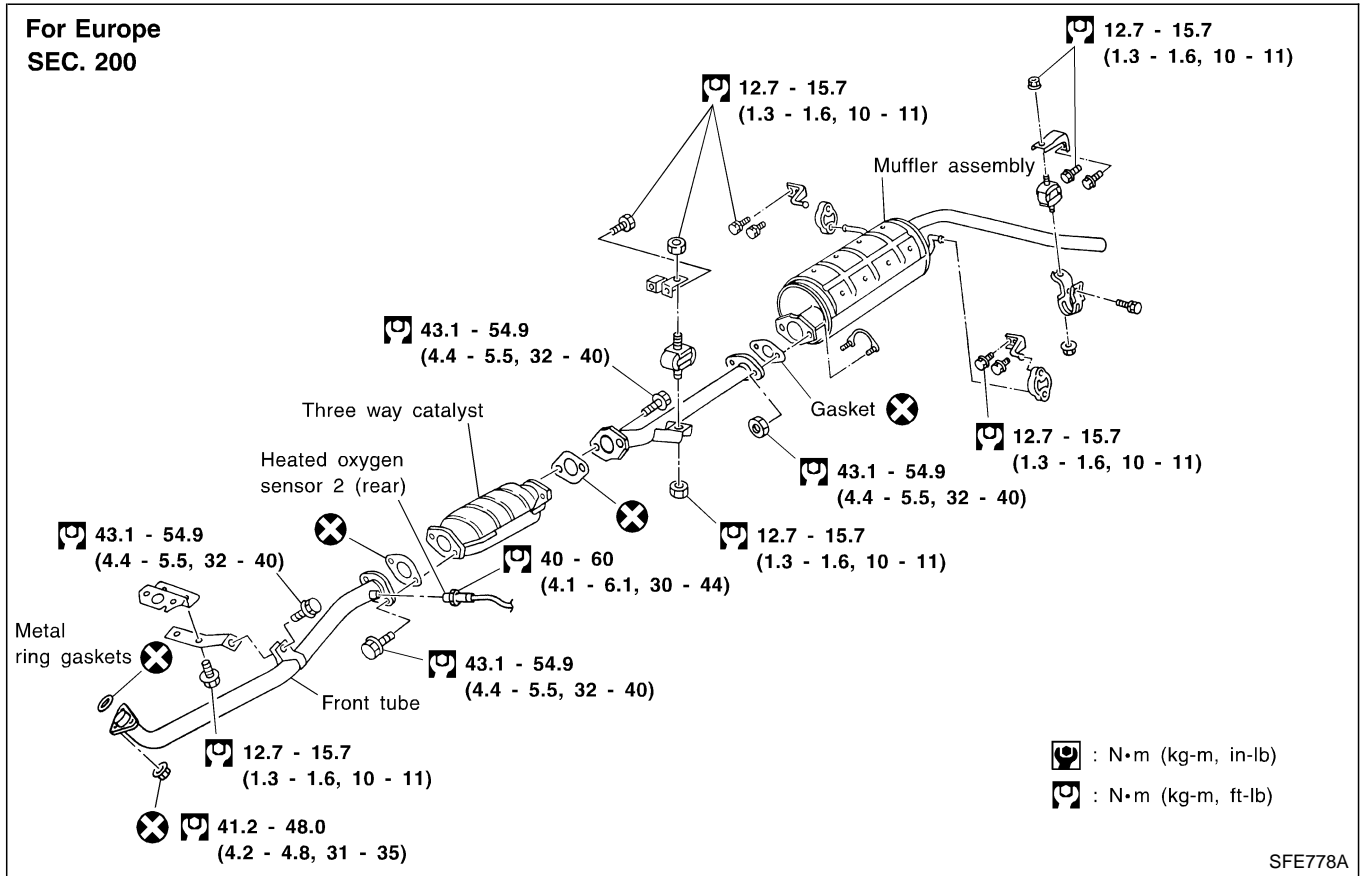
FUEL SYSTEM

YD25DDTi ENGINE MODEL

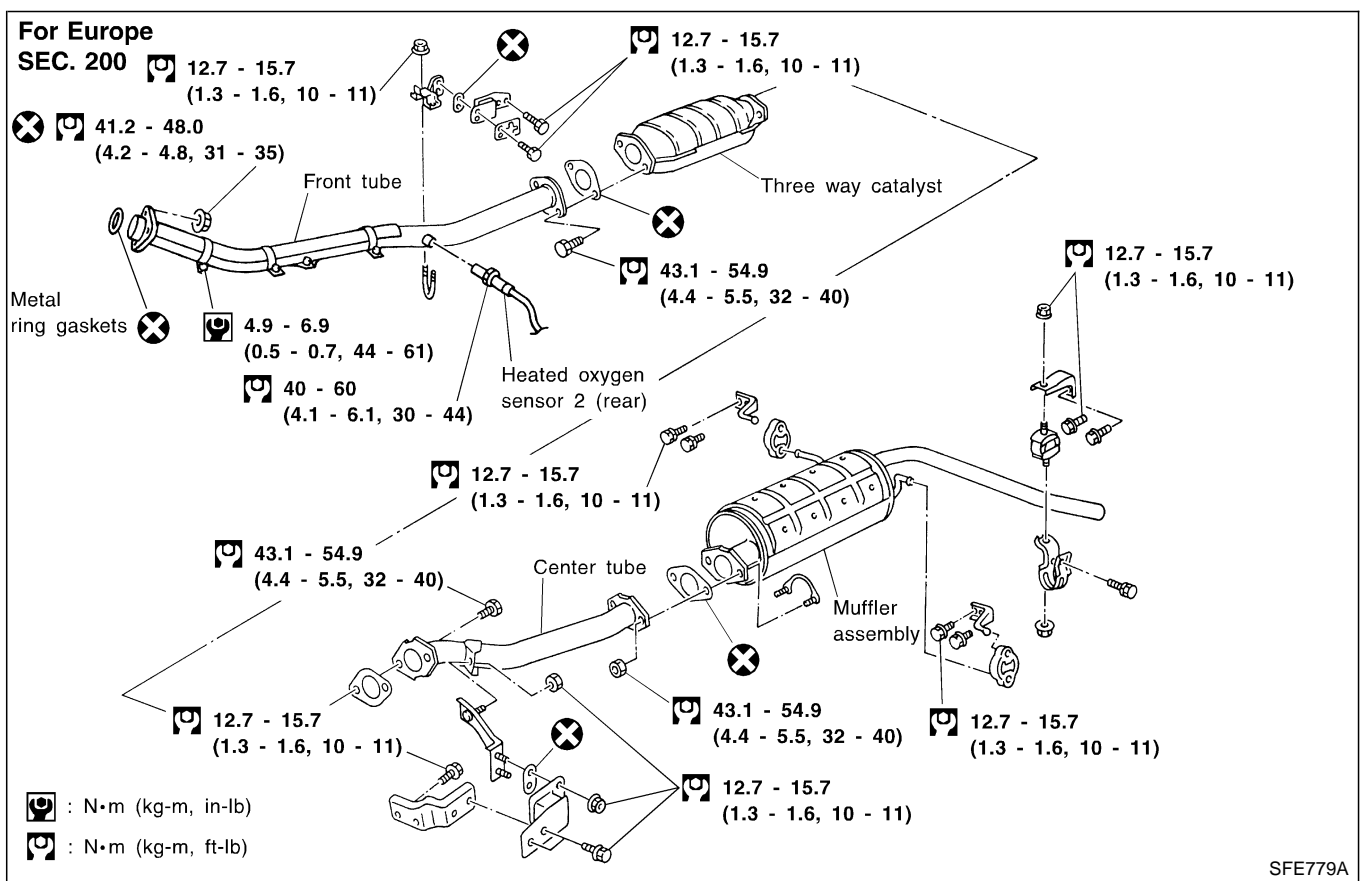


EXHAUST SYSTEM

KA24DE ENGINE (2WD) MODEL

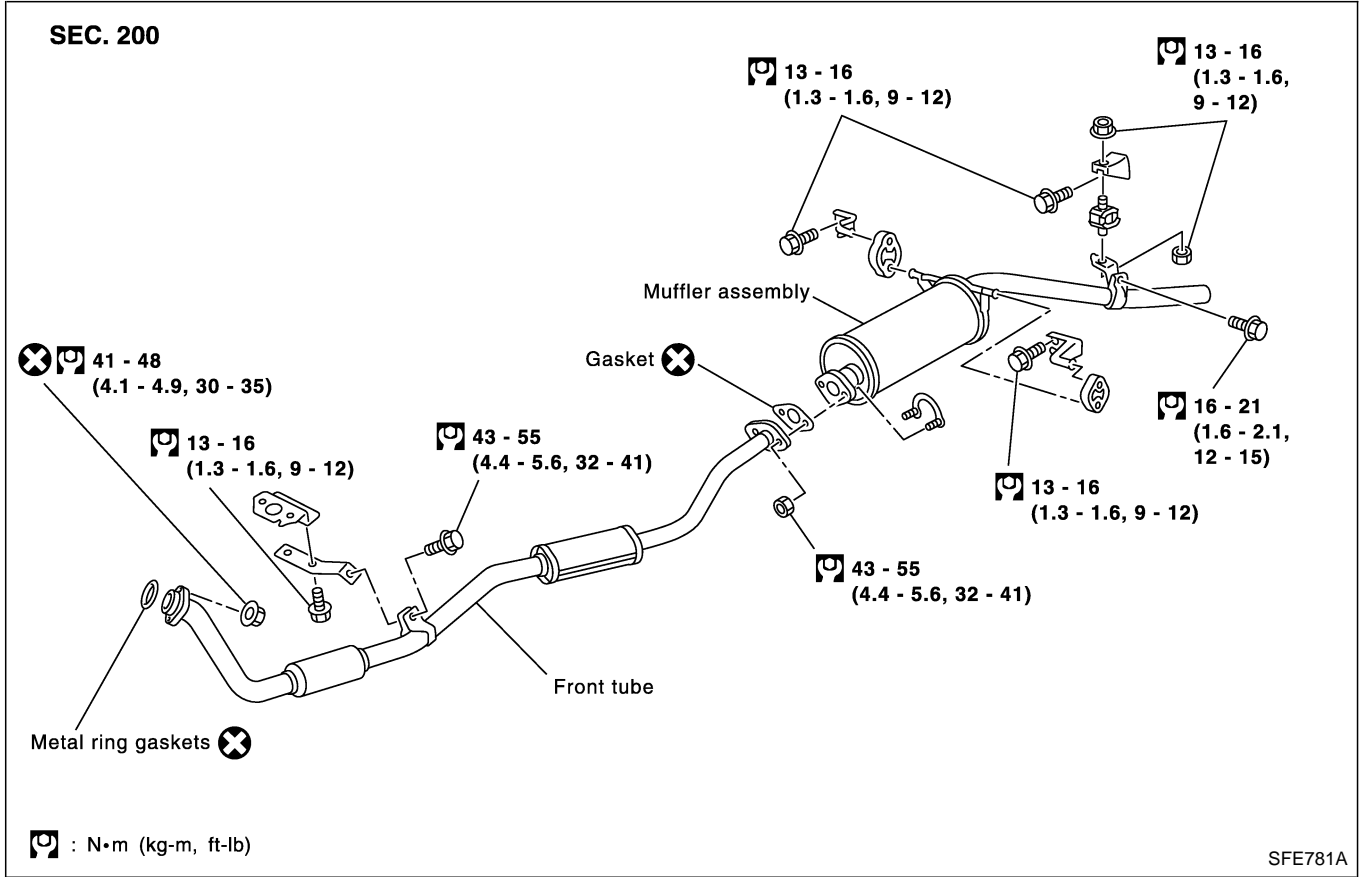


KA24DE ENGINE (4WD) MODEL

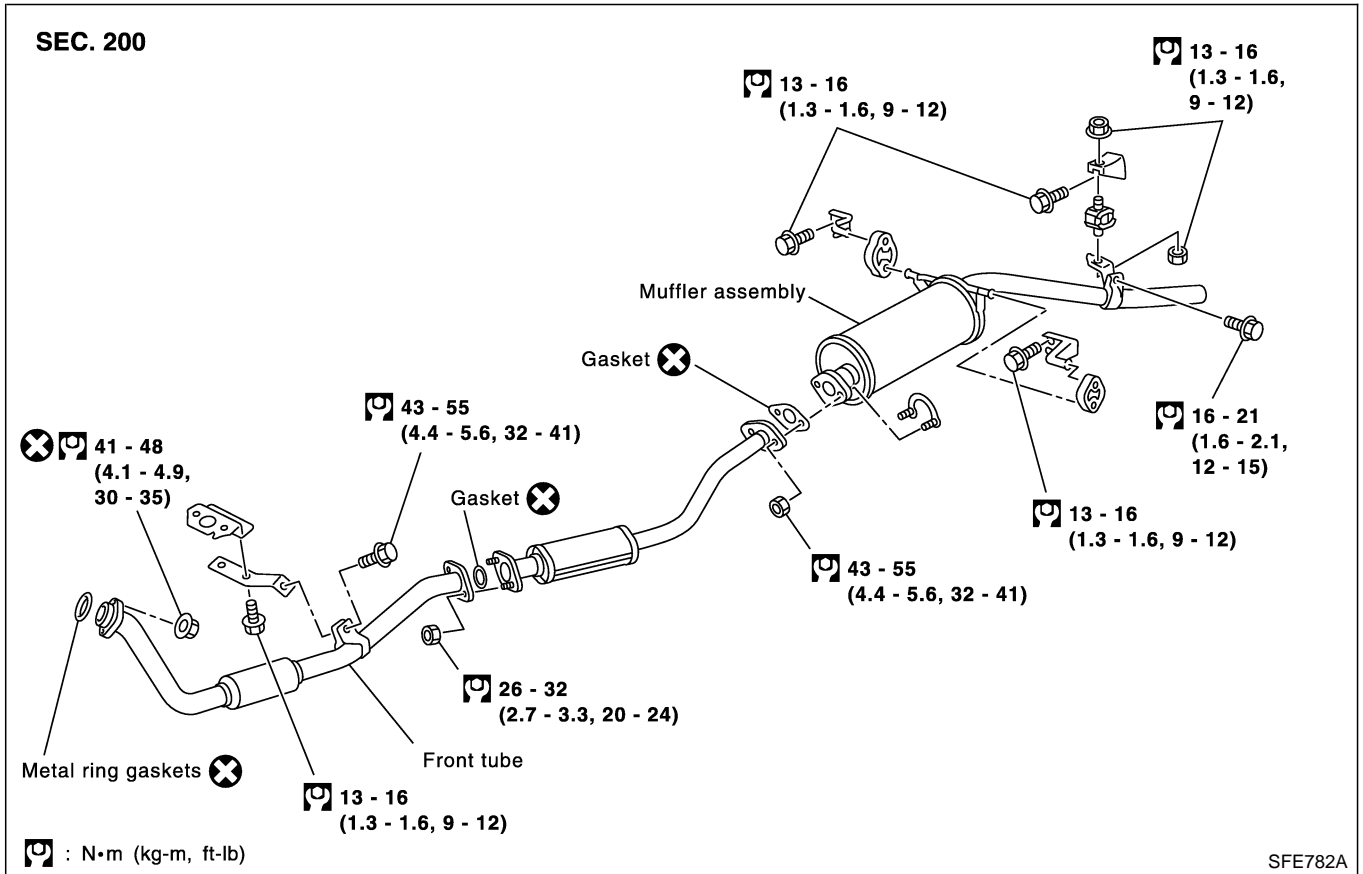


EXHAUST SYSTEM

YD25DDTi ENGINE (2WD) MODEL



YD25DDTi ENGINE (4WD APPEARANCE 2WD) MODEL



EXHAUST SYSTEM

YD25DDTi (4WD) ENGINE MODEL

