

# ACCELERATOR CONTROL, FUEL & EXHAUST SYSTEMS

GI

MA

EM

LC

EC

**FE**

CL

MT

AT

TF

PD

FA

RA

BR

ST

RS

BT

HA

EL

IDX

## SECTION FE

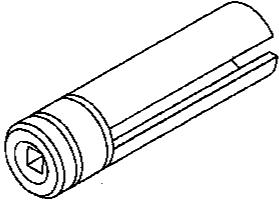
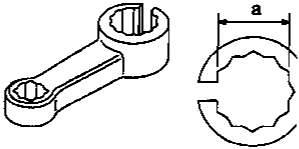
### CONTENTS

<b>PREPARATION</b> .....2	Fuel Tank .....5
Special Service Tools .....2	Removal .....5
<b>ACCELERATOR CONTROL SYSTEM</b> .....3	Installation .....6
Accelerator Control System.....3	Fuel Pump and Gauge .....7
Adjusting Accelerator Wire .....3	Removal And Installation .....7
<b>FUEL SYSTEM</b> .....4	<b>EXHAUST SYSTEM</b> .....8

# PREPARATION

## Special Service Tools

The actual shapes of Kent-Moore tools may differ from those of special service tools illustrated here.

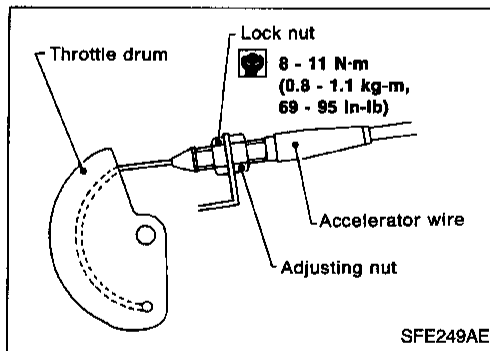
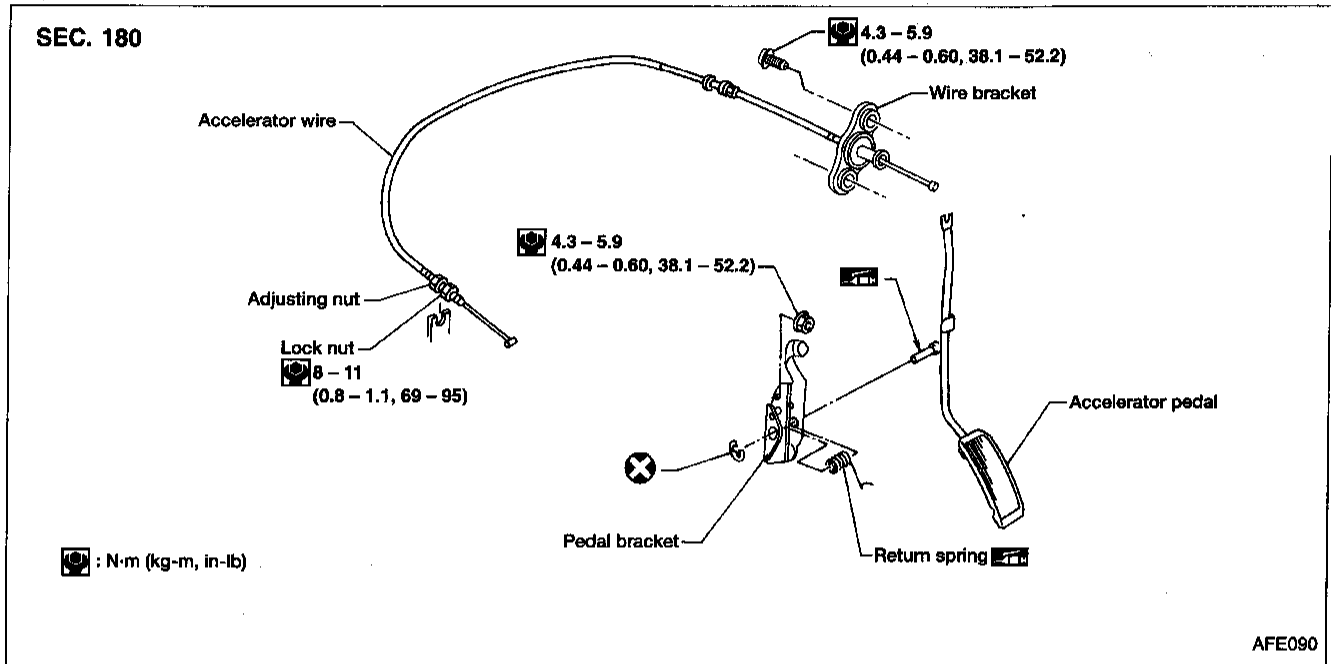
Tool number (Kent-Moore No.) Tool name	Description
KV10117100 (J3647-A) Heated oxygen sensor wrench	<div style="text-align: center;">  </div> <p style="text-align: center;">NT379</p> <p style="text-align: right;">For 22 mm (0.87 in) hexagon nut</p>
KV10114400 (J38365) Heated oxygen sensor wrench	<div style="text-align: center;">  </div> <p style="text-align: center;">NT636</p> <p style="text-align: right;">a: 22 mm (0.87 in)</p>

# ACCELERATOR CONTROL SYSTEM

## Accelerator Control System

### CAUTION:

- When removing accelerator wire, make a mark to indicate lock nut's initial position.
- Check that throttle valve opens fully when accelerator pedal is fully depressed. Also check that it returns to idle position when pedal is released.
- Check accelerator control parts for improper contact with any adjacent parts.
- When connecting accelerator wire, be careful not to twist or scratch its inner wire.
- Refer to EL section ("AUTOMATIC SPEED CONTROL DEVICE") for ASCD wire adjustment.



### Adjusting Accelerator Wire

1. Loosen lock nut, and tighten adjusting nut until throttle drum starts to move.
2. From that position, turn back adjusting nut 1.5 to 2 turns, and secure lock nut.



# FUEL SYSTEM

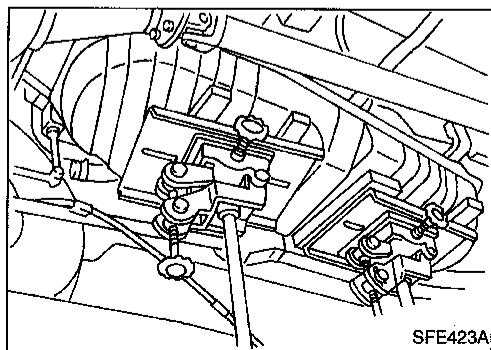
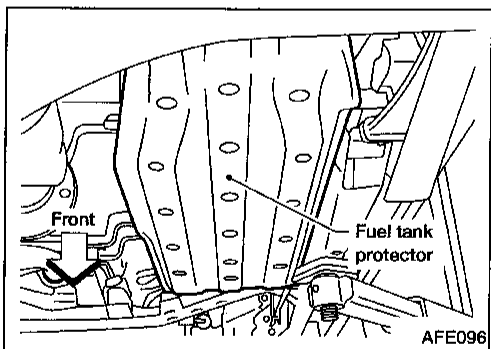
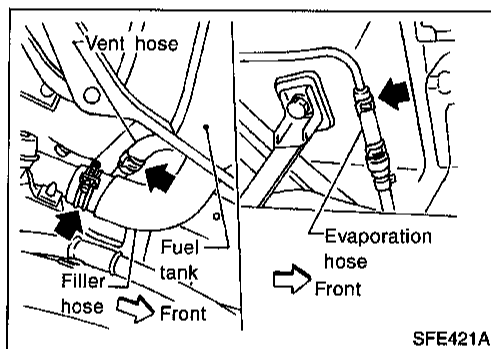
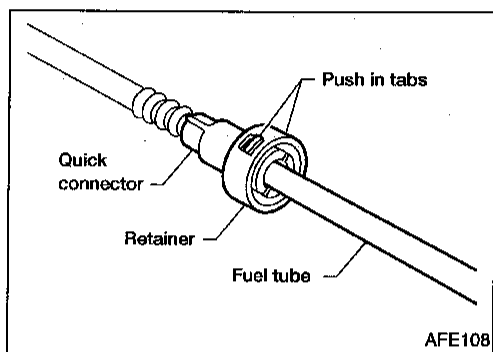
## Fuel Tank

### REMOVAL

1. Release fuel pressure from fuel line.  
Refer to MA section ("Changing Fuel Filter").
2. Disconnect battery ground cable.
3. Drain fuel from fuel tank.
4. Disconnect electrical connector.
5. Remove filler protector.
6. Remove the quick connector as follows.
  - a. Put mating marks on tubes and connectors for correct installation.
  - b. Hold the sides of the connector, push in tabs, and pull out the tube inserted in the retainer.

#### CAUTION:

- The tube can be removed when the push in tabs are completely depressed. Do not twist it more than necessary.
- Do not use any tools to remove the quick connector.



7. Disconnect filler hose, vent hose and evaporation hose at fuel tank side.
8. Remove fuel tank protector.
9. Remove fuel tank mounting bolts while supporting fuel tank.
10. Remove fuel tank.

GI

MA

EM

LC

EC

FE

CL

MT

AT

TF

PD

FA

RA

BR

ST

RS

BT

HA

EL

IDX

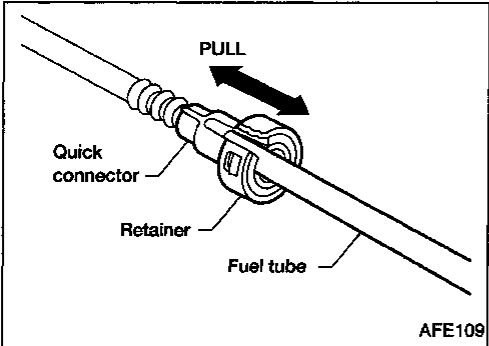
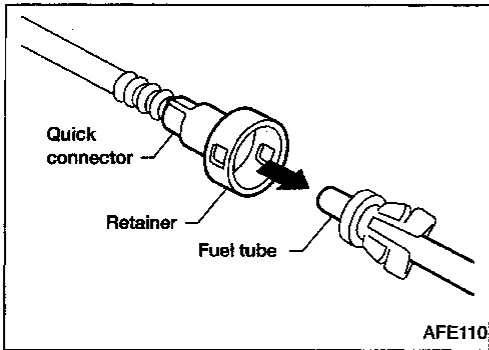
## FUEL SYSTEM

### Fuel Tank (Cont'd)

#### INSTALLATION

To install, reverse the removal procedure. Connect the quick connector as follows:

- Align push in tabs with retainer openings.
- Insert the tube into the center of the connector until you hear a click.



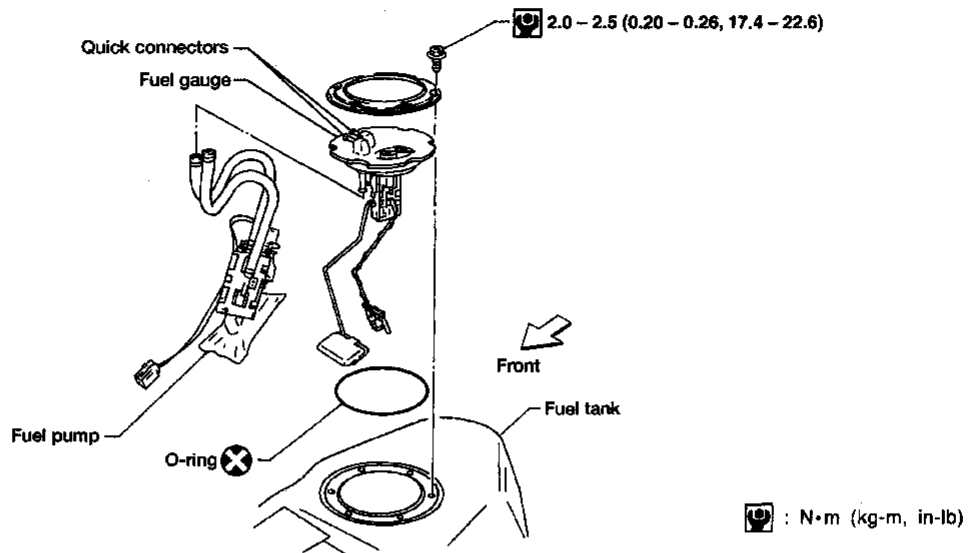
After connecting quick connector, make sure the connection is firmly made using the following method.

- Pull on the fuel tube and connector to make sure they are firmly connected.
- Start the engine, increase engine speed and verify that there are no leaks.

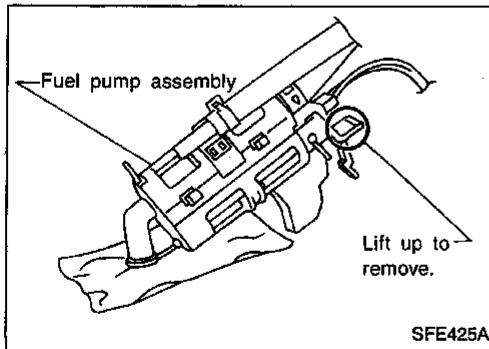
# FUEL SYSTEM

## Fuel Pump and Gauge

SEC. 172

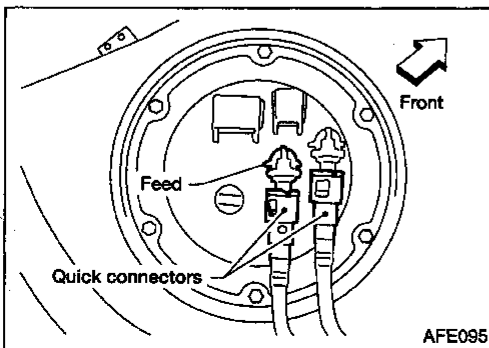


AFE091



### REMOVAL AND INSTALLATION

1. Remove fuel tank. Refer to "Fuel Tank" "REMOVAL," FE-5.
- For removal of quick connectors, refer to step 6 of "Fuel Tank" "Removal," FE-5.
2. Remove the six screws.
3. Remove fuel gauge retainer and fuel gauge.
4. Remove fuel pump with bracket while lifting the pawl of the fuel pump bracket upward.



5. Installation procedure is the reverse order of removal.
- Install fuel gauge as shown.

#### CAUTION:

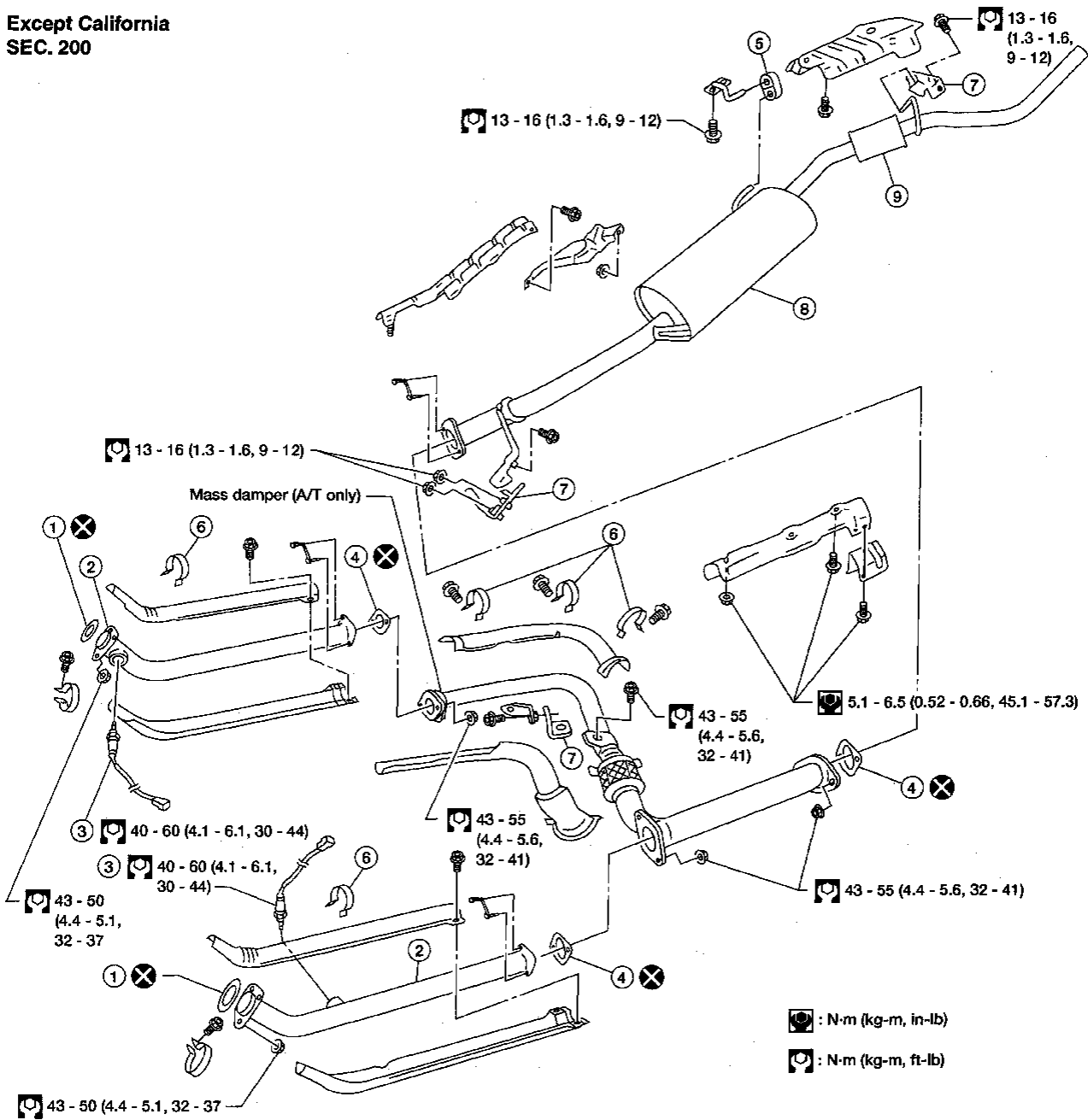
- **Tighten bolts to specified torque.**
- $\square$  : 2.0 - 2.5 N·m (0.20 - 0.26 kg - m, 17.4 - 22.6 in - lb)
- Always replace O-ring with a new one.
- After installation, run engine and check for leaks at connections.

# EXHAUST SYSTEM

## CAUTION:

- Always replace exhaust gaskets with new ones when reassembling.
- With engine running, check all tube connections for exhaust gas leaks, and entire system for unusual noises.
- Check to ensure that mounting brackets and mounting insulators are installed properly and free from undue stress. Improper installation could result in excessive noise or vibration.
- Discard any heated oxygen sensor which has been dropped from a height of more than 0.5 m (19.7 in) onto a hard surface such as a concrete floor; use a new one.
- Do not overtorque the oxygen sensor. Doing so may cause damage to the oxygen sensor, resulting in the MIL coming on.

Except California  
SEC. 200



AFE098

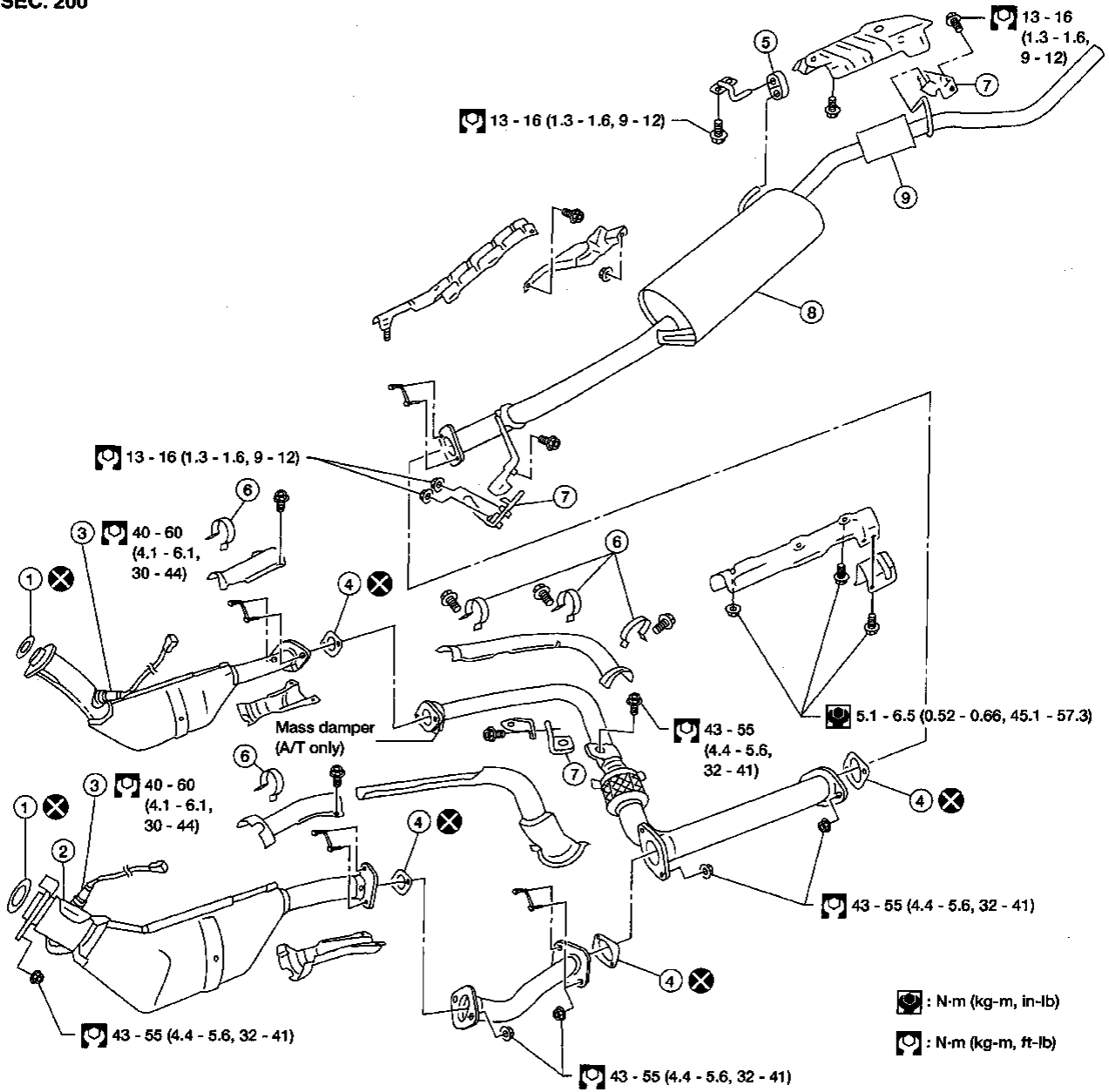
- |                             |                   |                    |
|-----------------------------|-------------------|--------------------|
| ① Gasket                    | ④ Gasket          | ⑦ Mounting bracket |
| ② Front tube                | ⑤ Mounting rubber | ⑧ Center muffler   |
| ③ Rear heated oxygen sensor | ⑥ Clamp           | ⑨ Rear muffler     |

FE-8



# EXHAUST SYSTEM

California exhaust  
SEC. 200



- ① Gasket
- ② Front tube
- ③ Rear heated oxygen sensor

- ④ Gasket
- ⑤ Mounting rubber
- ⑥ Clamp

- ⑦ Mounting bracket
- ⑧ Center muffler
- ⑨ Rear muffler

AFE099

GI  
MA  
EM  
LC  
EC  
FE  
CL  
MT  
AT  
TF  
PD  
FA  
RA  
BR  
ST  
RS  
BT  
HA  
EL  
IDX